

WHA-5500CPE-NT

108Mbps 802.11a/b/g Outdoor AP

WHA-5500CPE is an all-in-one outdoor device designed to let users build outdoor wireless connections quickly and easily. Running at the quiet 5GHz spectrum, it delivers high performance at distance of more than 5 kilometers.



108Mbps Atheros 11a/b/g CPE

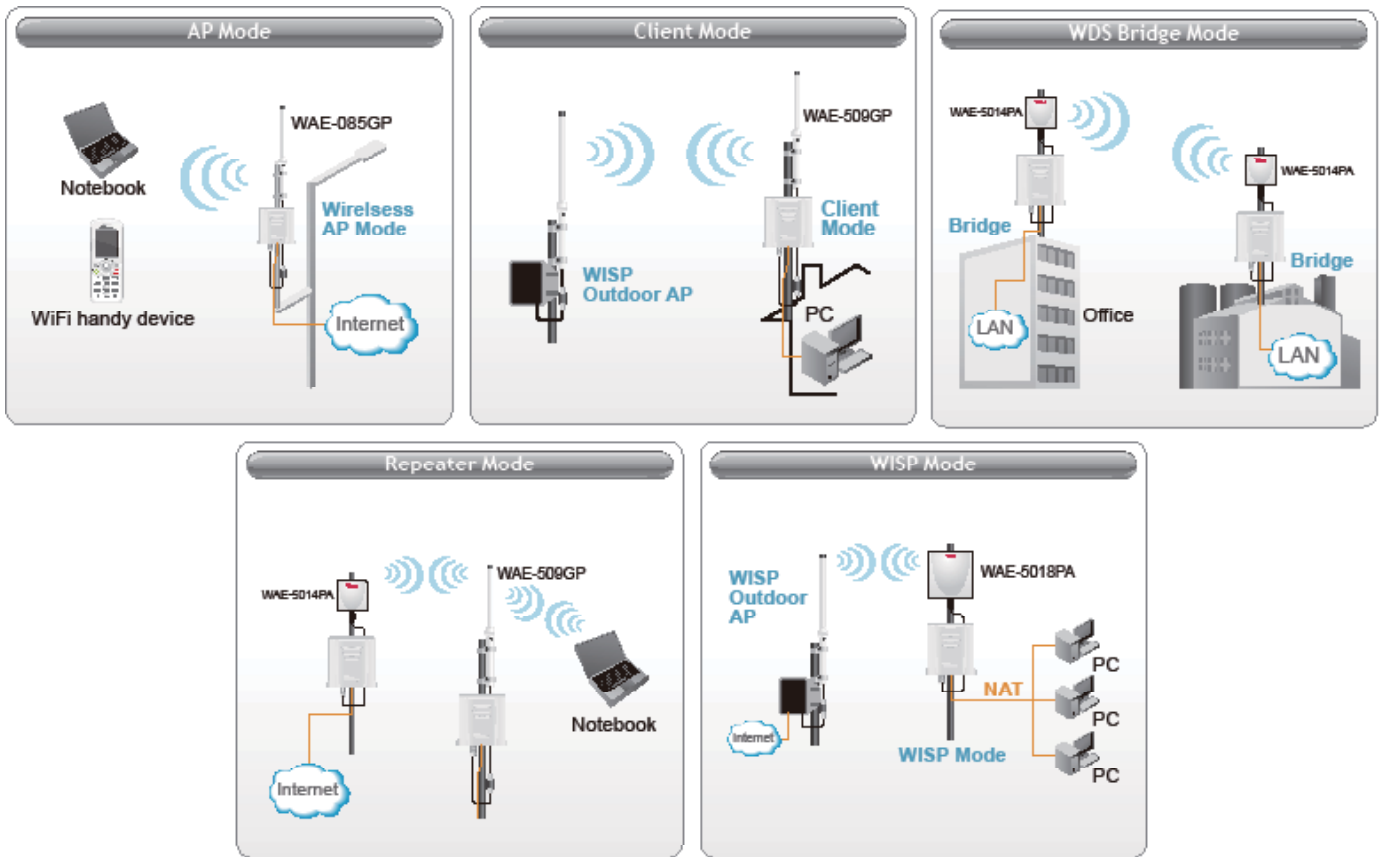
The WHA-5500CPE-NT is all-in-one of the Outdoor AP device that is designed to run at the 5GHz and 2.4GHz frequency spectrum. Therefore, you can setup up your outdoor wireless network quickly. It can be use to build point-to-point connections between buildings or used as wireless clients for WISP subscribers. With its Atheros 108Mbps Super A / Turbo A*/ Super G / Turbo G capability, it is also suitable for WISP backbone applications.

5 Kilometers Distance or More

With high performance Atheros 11a/b/g radio, the CPE can reach the distance of 5 kilometer or more in good weather condition. The included 802.3af Power over Ethernet adapter is capable of up to 100 meter in distance between the AP unit to the power outlet. This makes installation very versatile and simple.

Multiple Operation Mode

The WHA-5500CPE-NT is equipped with multiple wireless operation modes. The Bridge Mode function is for building wireless connection between 2 buildings. The AP mode is for hotspot service or WISP service to subscribers. The CPE can be used on the subscriber sight to receive WISP Internet service in client/WISP mode. The CPE has every wireless mode function for your equipments.



VLAN & QoS

WHA-5500CPE-NT provides Multi-SSID to create different wireless networks using one AP. The TAG VLAN feature allow service provider to control service content of each SSID network all the way back to core router. The QoS feature allows to prioritized the different package according the 802.11e WMM protocol and triple play(Voice, Video and Data).

If you want to setup your wireless network in high performance 5GHz/2.4GHz spectrum in quickest and most cost effective way. Looking no further, the WHA-5500CPE-NT is your choice.

1. The use of Super A or Turbo A mode in some countries is not permitted.
2. POE cable is optional
3. The AP should be installed in upright position for rain and splash proof. Please do not install it upside down or put it into the water.
4. Antenna is not included



Specifications

Standard

- 802.11a/Super A /11g /Super G mode support
- RoHS compliant
- Supports One 10/100 Mbps LAN
- Auto MDI/MDI-X support
- 4MB Flash, 32MB SDRAM
- IEEE 802.3af (PoE) compliance up to 100 meters of CAT 5 cable length
- 802.11h compatible

Antenna Connector

- N-Type Female Connector

Frequency Band

- ETSI: 802.11a: 5.470 to 5.725 GHz
- USA: 802.11a: 5.725 to 5.825 GHz
- ETSI: 802.11b/g: 2.412 to 2.472 GHz
- USA: 802.11b/g: 2.412 to 2.462 GHz

Power Supply

- External Power Adapter : input 100~240Vac/50~60Hz output 5.5V/2.5A
- Power over Ethernet (802.3af), up to 100 meters of CAT 5 cable
- POE Adapter, DC Injector provided
- POE port built-in on the PCB

Transmission Rates

- IEEE802.11a: 6/9/12/18/24/36/48/54Mbps
- IEEE802.11g: 6/9/12/18/24/36/48/54Mbps
- IEEE802.11b: 1/2/5.5/11Mbps

Modulation Technology

- 802.11a Orthogonal Frequency Division Multiplexing (OFDM)
- 802.11g Orthogonal Frequency Division Multiplexing (OFDM)
- 802.11b Direct Sequence Spread Spectrum (DSSS)

Output Power

- 802.11a
 - 54 Mbps @ 17dBm
 - 48 Mbps @ 18dBm
 - 36 Mbps @ 19dBm
- 6, 9, 12, 18, 24 Mbps @ 20dBm

- 802.11g
 - 54 Mbps @ 17dBm
 - 48 Mbps @ 18dBm
 - 36 Mbps @ 20dBm
- 6, 9, 12, 18, 24 Mbps @ 20dBm
- 802.11b
 - 1, 2, 5.5, 11 Mbps @ 20dBm

Software

- Support Client Mode, AP Mode, WDS Bridge Mode, Repeater Mode, WISP Mode
- Multiple SSID
- QoS (802.11e WMM)
- Wi-Fi, WPA compatible interoperability
- WPA with PSK/TKIP/AES support ,WPA2 support
- Privacy Separator support
- SNMP v1/v2 support
- Support adjustable output power
- Comply with DFS II
- 152-bit WEP support (Atheros Proprietary)
- Super A/G mode support (Atheros Proprietary)
- ACK Timeout Adjustment
- WPA over WDS support
- Bootloader Protection and Emergency Firmware Upload Code

Dimension

- Polarization : Linear, vertical

Software/Firmware

- Site Survey
- DHCP Client
- Wireless access control by MAC address (deny or accept)
- WPA Support (WPA personal and enterprise)
- Web-based configuration via popular browser (MS IE, Netscape)
- Firmware upgrade and configuration backup via Web

Product Weight (g)

- 1105 g

Product Size (L x W x H (mm))

- 225 x 122 x 225 mm

Ordering Information:

WHA-5500CPE-NT	802.11a/b/g Outdoor AP, ETSI 802.11a/b/g Outdoor AP, USA
AirLive OD-25M	Optional 25 meter POE Cable