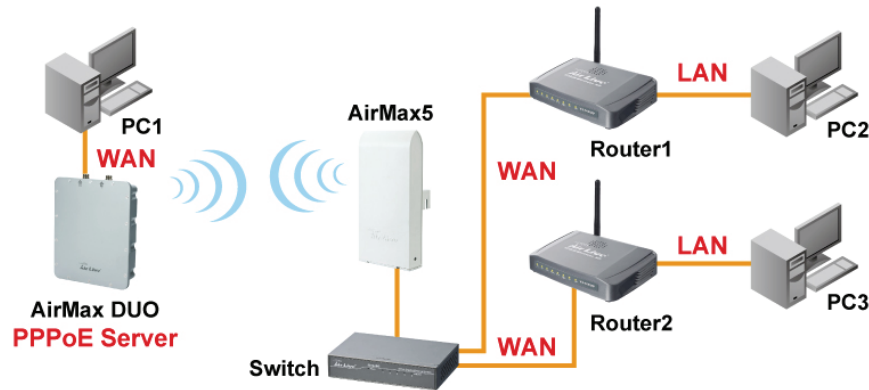


## AirMax DUO PPPoE Server Configuration Example

In this exercise, we will setup 2 PPPoE Server Accounts in AirMax DUO according to the Topology Diagram below.



- PC1**
  - **IP address:** 192.168.20
  - **Subnet mask:** 255.255.255.0
  - **Default gateway:** 192.168.20.1
  - **DNS server:** 192.168.20.1
- AirMax DUO**
  - **SSID:** pppoe
  - **WAN IP address:** 192.168.20.1
  - **LAN IP address:** 192.168.1.20
  - **PPPoE Server Local IP Address:** 192.168.1.20
  - **PPPoE Server Remote Starting IP:** 192.168.1.100
  - **PPPoE Server Remote End IP:** 192.168.1.200
  - **PPPoE Server One User Per Account:** Disable
  - **PPPoE Account1**
    - ◆ **Username:** user1
    - ◆ **Password:** user1
    - ◆ **Assign IP:** 0.0.0.0
  - **PPPoE Account2**
    - ◆ **Username:** user2
    - ◆ **Password:** user2
    - ◆ **Assign IP:** 192.168.1.30
- AirMax5**
  - **Bridge Infrastructure Mode**
  - **IP:** 192.168.1.50
- Router1**

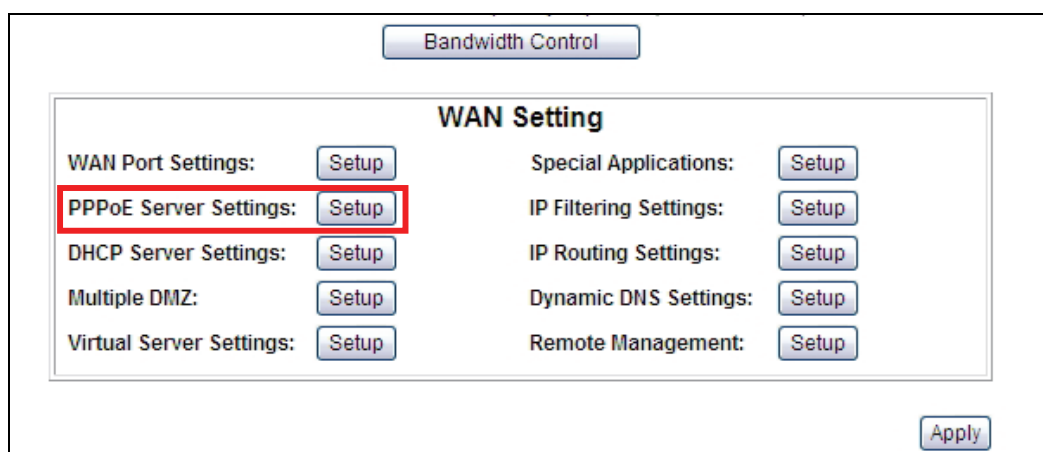
- Gateway Mode
- WAN: PPPoE, Account: user1, Password: user1
- LAN IP: 192.168.100.252
- Router2
  - Gateway Mode
  - WAN: PPPoE, Account: user2, Password: user2
  - LAN IP: 192.168.100.252
- PC1 IP: DHCP
- PC2 IP: DHCP

### **Important Characteristic about PPPoE server**

- If you do not specify the IP address(0.0.0.0), each account can get up to 3 IP addresses from the Remote IP Pool.
- If you specify IP address, only one IP is provided per account
- The routers will get a IP with subnet mask of 255.255.255.255. As a result, PPPoE clients(PC1 and PC2) can not see any device between the router and the PPPoE server's WAN port, even if they are in the same subnet. This provide security and privacy for the network environment.

### **Exercise:**

1. Connect all devices according to the IP address and topology on the Topology Diagram
2. Go to AirMax DUO and set the operation mode to "Dual Band Router"
3. From the wireless settings, please choose the "PPPoE" Server"



4. setup the PPPoE server according to the information:

**PPPoE Server Settings:**

Enable       Disable  
**Authentication:**       Local Account       Radius  
**One User Per Account:**       Enable       Disable  
**Local IP Address:**      192 . 168 . 1 . 20  
**Remote Start IP:**      192 . 168 . 1 . 100  
**Remote End IP:**      192 . 168 . 1 . 200  
**Authentication Type:**      PAP  
 **MPPE Encryption:**      128-bit  
**Compression:**       BSD     Deflate

---

**Local Account Management:**

User Name:   
 Password:   
 Assigned IP:  .  .  .

Select	User Name	Password	Assigned IP	Enable
<input type="radio"/>	user1	user1	0.0.0.0	<input checked="" type="checkbox"/>
<input type="radio"/>	user2	user2	192.168.1.30	<input checked="" type="checkbox"/>

5. Configure the WAN PPPoE client account on Router 1 and Router2.
6. Check the IP addresses obtain from PPPoE server for Router1 and Router2 are correct.
7. Do a PING command from PC2 to PC1 and from PC3 to PC1. The PING should response.