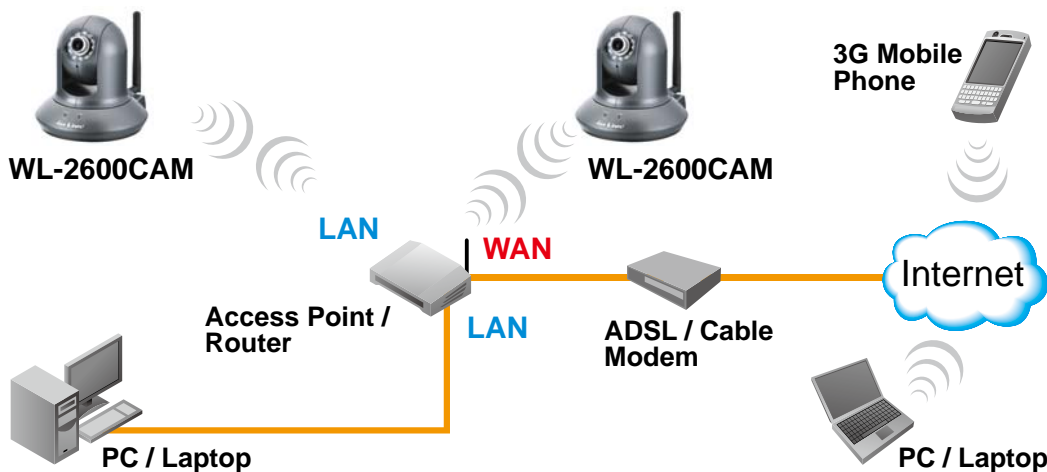


WL-2600CAM

Wireless Pan-Tilt Night Vision IP Camera

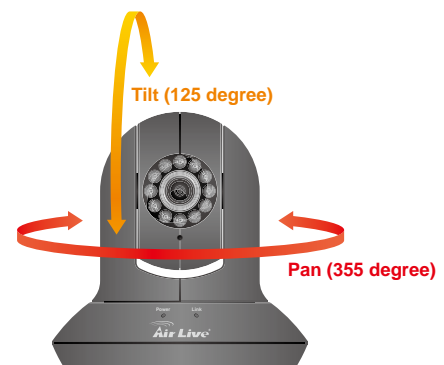
The AirLive WL-2600CAM is an advanced wireless IP camera with incredible Pan (355°), Tilt (125°) and high vision functions. There are possibilities to remotely set a particular patrol area, so it will move its lens in both horizontal and vertical direction continuously to scan the area. Or it can be remotely controlled to direct the camera to a requested direction. The AirLive WL-2600CAM is the world's 1st Pan/Tilt CMOS IP Camera equipped with an automatic removable mechanical IR-cut filter and 12 high power Infrared LEDs enabling it to record video footage not only from any angle, but also under any lighting condition.



Mechanical IR-cut filter enhances your video quality

The AirLive WL-2600CAM is the world's 1st Pan/Tilt CMOS IP Camera equipped with an automatic removable mechanical IR-cut filter and 12 high power Infrared LEDs enabling it to record video footage not only from any angle, but also under any lighting condition.

The AirLive WL-2600CAM supports simultaneous dual-streaming of MPEG-4 and Motion JPEG (MJPEG) to provide both high quality and bandwidth efficient compression formats. MJPEG delivers greater file integrity to make it ideal for detailed monitoring situations. MPEG-4 video has smaller file sizes making it more useful for extended recording periods or use in lower bandwidth networks. There are three motion detection functions that allow user to set different detecting zones. AirLive WL-2600CAM also supports set up of several Alarm possibilities and many different useful settings.



Manufacturer

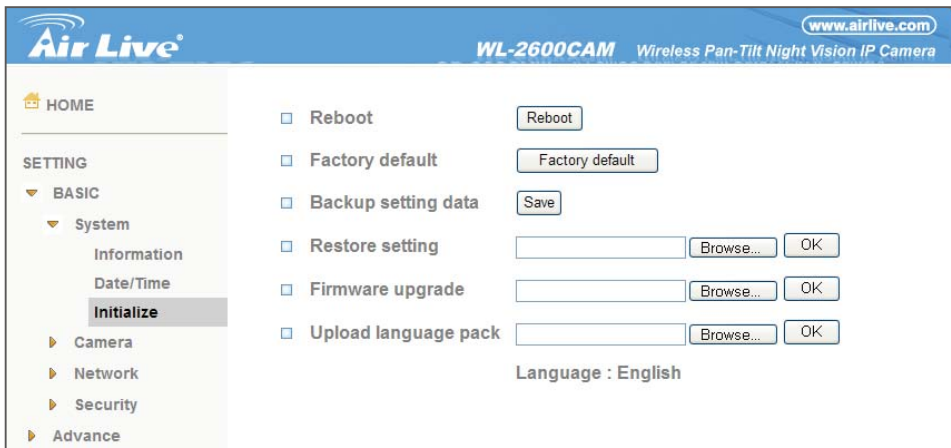
OvisLink Corp.

5F, No.96, Min-ChuanRd, Hsin-tien City, Taipei, Taiwan

www.airlive.com

Language Pack Feature

This camera also comes with upgradeable device language pack offering fourteen different languages for user-friendly operation. The language pack supports 14 languages now and still updating. These languages include Chinese, German, Spanish, Russian, Czech, Portuguese, and more.



View from Mobile Phone

The RSTP protocol feature allows 3G and 2.5G mobile phones to display captured images from the camera for live video surveillance from a remote location. With automatic light adjustment that eliminates bit rate problems caused by poor night time performance, WL-2600CAM is the perfect answer to remotely monitoring your house while out traveling.

- * The mobile device must be Internet-ready. Support Real Time Streaming Protocol (RTSP) and be equipped with a 3G video player such as PacketVideo™, Quicktime™, or RealPlayer™, and have Internet access.
- * Use of video equipment for recording the image of a person without their knowledge and consent are prohibited in certain states or jurisdictions. The end-user assumes all liability for compliance with applicable state, local, and federal laws.

AirLive CamProExpress

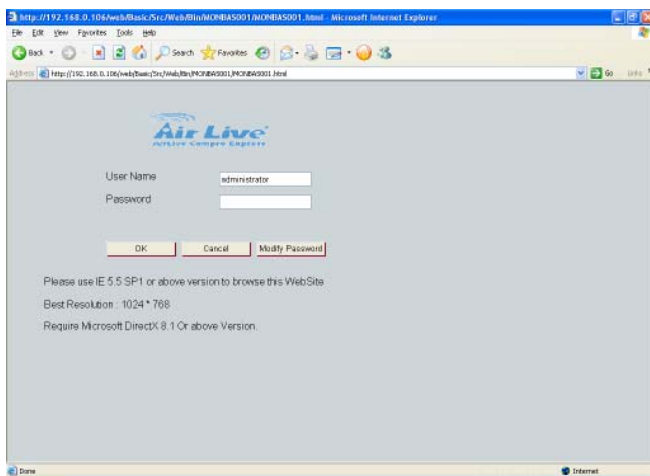
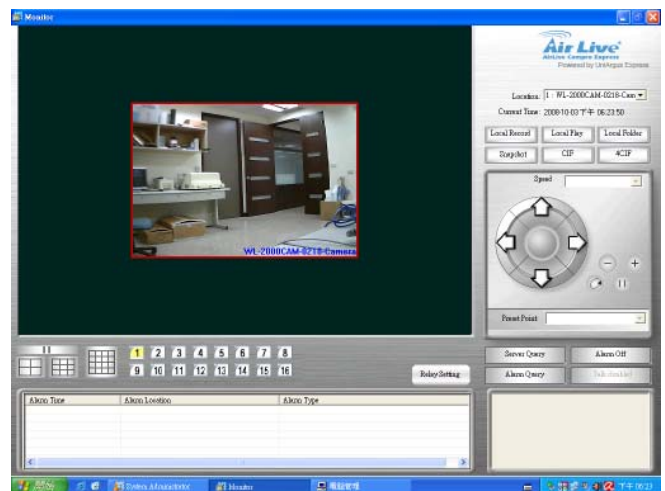
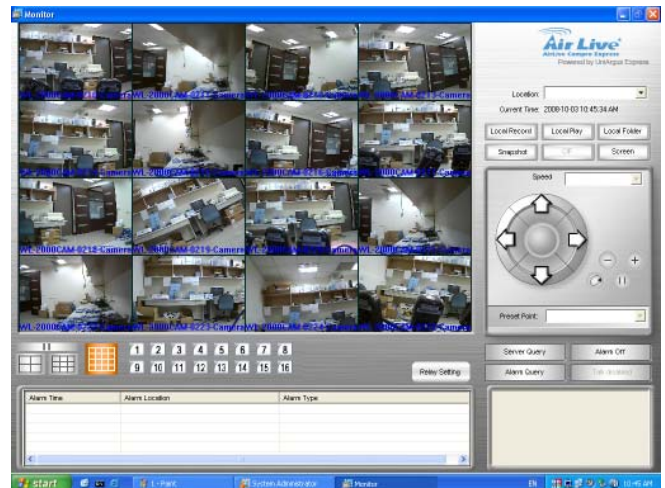
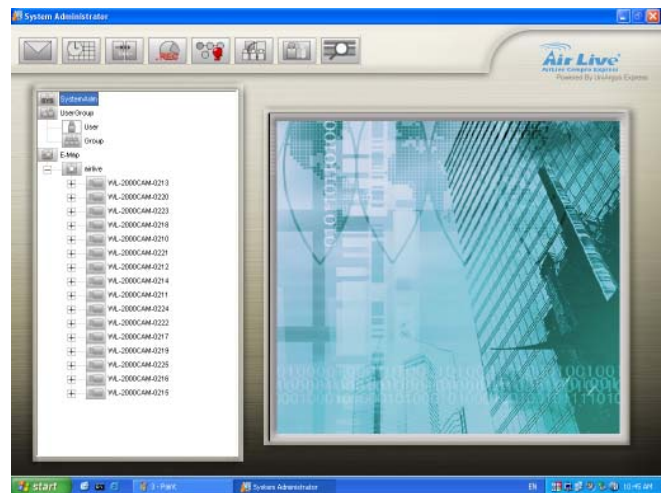
The AirLive CamPro Express supports 16 cameras, providing a fully integrated surveillance and alarm management solution. The AirLive CamPro Express is a complete freeware for you to do the central monitor. You can find this software in the CD or you can download from the support page. The CamPro Express support WL-2000CAM, POE-100CAM, POE-200CAM, OD-300CAM, WL-2600CAM.

- The E-map user interface and intelligent privilege management solves management problems.
- Multiple rotation screens (1/4/9/16) provide the most flexible method to monitor your surveillance installation.

The CamPro Express supports you to view from the remote site of computer. By simple step that you install the IIS Server into your computer you can view your home or office when you are in oversea.

Web Monitor

The CamPro Express allows you to monitor 16 channels via the computer and WEB UI. You can choose how would you like to view the camera, the Cam Pro Express support 1/4/9/16 different view. You can also choose to view the different camera in single view or 1/4/9/16 view.



CamPro Express system provides a solution for local stores, supermarkets, warehouses, petrol stations, government offices, buildings, schools, car parks, holiday villas, luxury homes and many other applications.

Hardware Specification

Image Sensor

- 1/4" Progressive scan CMOS sensor

Lens

- 4.0mm, F2.0

Zoom

- 10x Digital

Minimum Illumination

- 0 Lux with IR LED on

Infrared Filter

- Automatic removable Infrared-cut filter

Infrared LED

- 12 pcs (850nm)

Infrared Working Distance

- 10m (33 feet)

Video Compression

- Motion JPEG
- MPEG-4

Max Resolution

- 640 x 480 (VGA)

Frame Rate

- Motion JPEG: Up to 30 fps in all resolutions
- MPEG-4: Up to 30 fps in all resolutions

Video Streaming

- Simultaneous MPEG-4 and Motion JPEG
- Controllable frame rate and bandwidth
- Supports 3GPP/ISMA RTSP
- Supports Unicast & Multicast

Audio

- Two-way (full duplex)
- Built-in microphone
- 3.5mm jack for Mic/Line in
- 3.5mm jack for Line out

Wireless

- IEEE 802.11b/g

Alarm and Event Management

- Built-in multi-window motion detection
- External input x 1 / output x 1 for alarm or sensor
- Triggered and scheduled events
- Pre- and post-alarm buffer
- Image upload over FTP, e-mail and HTTP
- Notification over TCP and e-mail

Security

- ID and password authentication
- HTTPS encryption (SSL V3.0)

Connectors

- RJ-45 for Ethernet 10BaseT/100BaseTX
- DC 12V power jack
- 3.5mm jack for Mic/Line in
- 3.5mm jack for Line out
- Terminal blocks for 1 alarm input, 1 output

Ordering Information:

AirLive WL-2600CAM Wireless Pan-Tilt Night Vision IP Camera