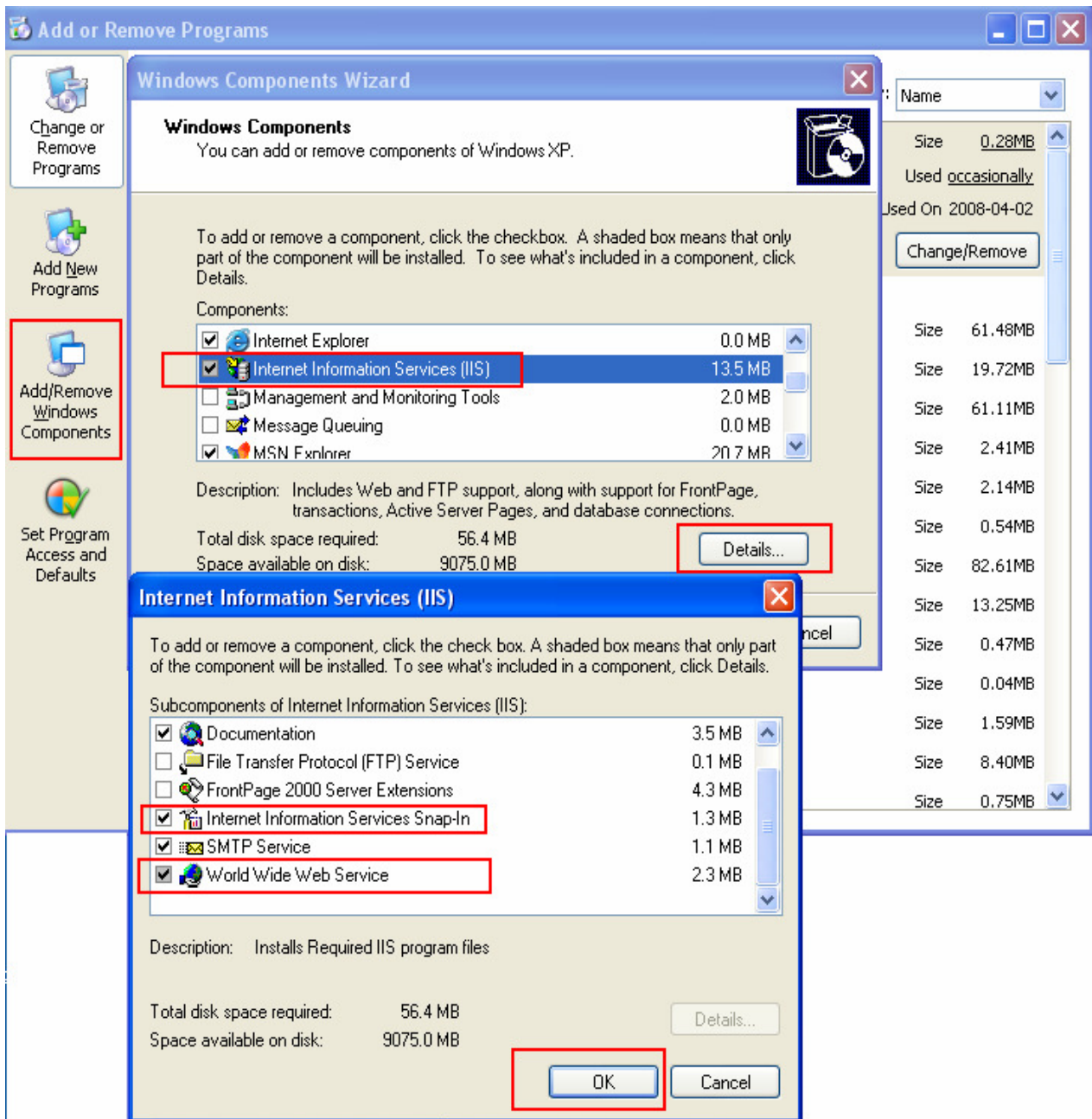



How can i login to Airlive CamPro Express to see the WEB UI from internet.

1. Please Go to the control panel--add or remove programs--add/remove windows components install the IIS on the Airlive CamPro Express server



- If the server under the NAT, please open the TCP port 80 and 8000 and 8001 to allow WEB and video through.


AirLive WT-2000ARM Turbo-G ADSL Router

Advanced
Quick Start
Interface Setup
Advanced Setup
Access Management
Maintenance
Status
Help

Routing
NAT
ADSL
Firewall

Virtual Server

Virtual Server for : Single IP Account

Rule Index :

Application : -

Protocol :

Start Port Number :

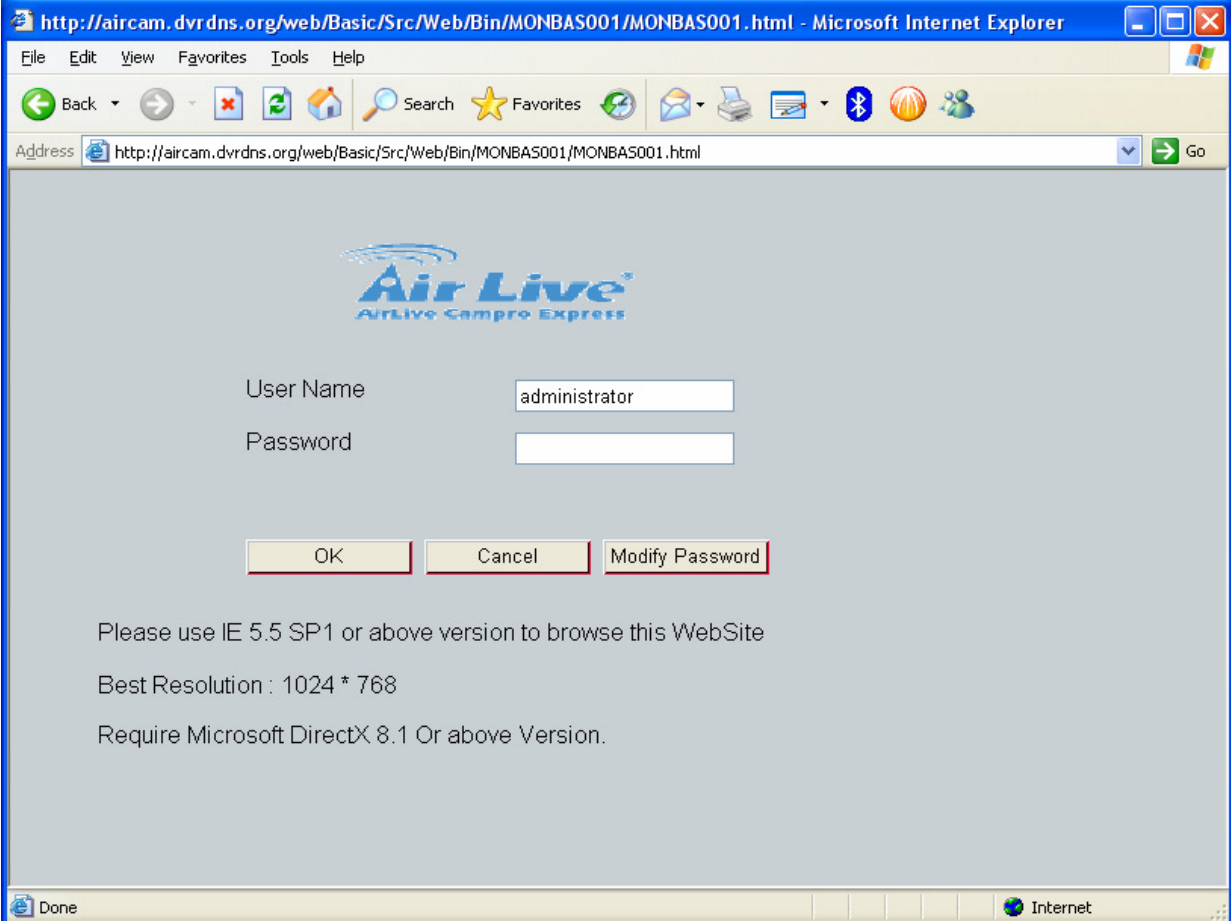
End Port Number :

Local IP Address :

Virtual Server Listing

Rule	Application	Protocol	Start Port	End Port	Local IP Address
1	HTTP_Server	ALL	80	80	192.168.2.100
2	-IPCAM	ALL	8000	8000	192.168.2.100
3	-	-	0	0	0.0.0.0
4	-	-	0	0	0.0.0.0
5	-	-	0	0	0.0.0.0


- Enter the <http://server-ip/web> in the IE browser will see the web page.



http://aircam.dvr dns.org/web/Basic/Src/Web/Bin/MONBAS001/MONBAS001.html - Microsoft Internet Explorer

File Edit View Favorites Tools Help

Address <http://aircam.dvr dns.org/web/Basic/Src/Web/Bin/MONBAS001/MONBAS001.html> Go



User Name

Password

Please use IE 5.5 SP1 or above version to browse this WebSite

Best Resolution : 1024 * 768

Require Microsoft DirectX 8.1 Or above Version.

Done Internet