

How to remote login when IPCAM under the NAT

(IPCAM list : WL-2000CAM, POE-100CAM, POE-200CAM, OD-300CAM, WL-2600CAM)

1. In the default setting, the IPCAM just need to open the TCP port 80.
2. Setting your router to open TCP port 80 by virtual server or port forwarding function.

Virtual Server ?

You can configure the Broadband router as a Virtual Server so that remote users accessing services such as the Web or FTP at your local site via Public IP Addresses can be automatically redirected to local servers configured with Private IP Addresses. In other words, depending on the requested service (TCP/UDP) port number, the Broadband router redirects the external service request to the appropriate internal server (located at one of your LAN's Private IP Address).

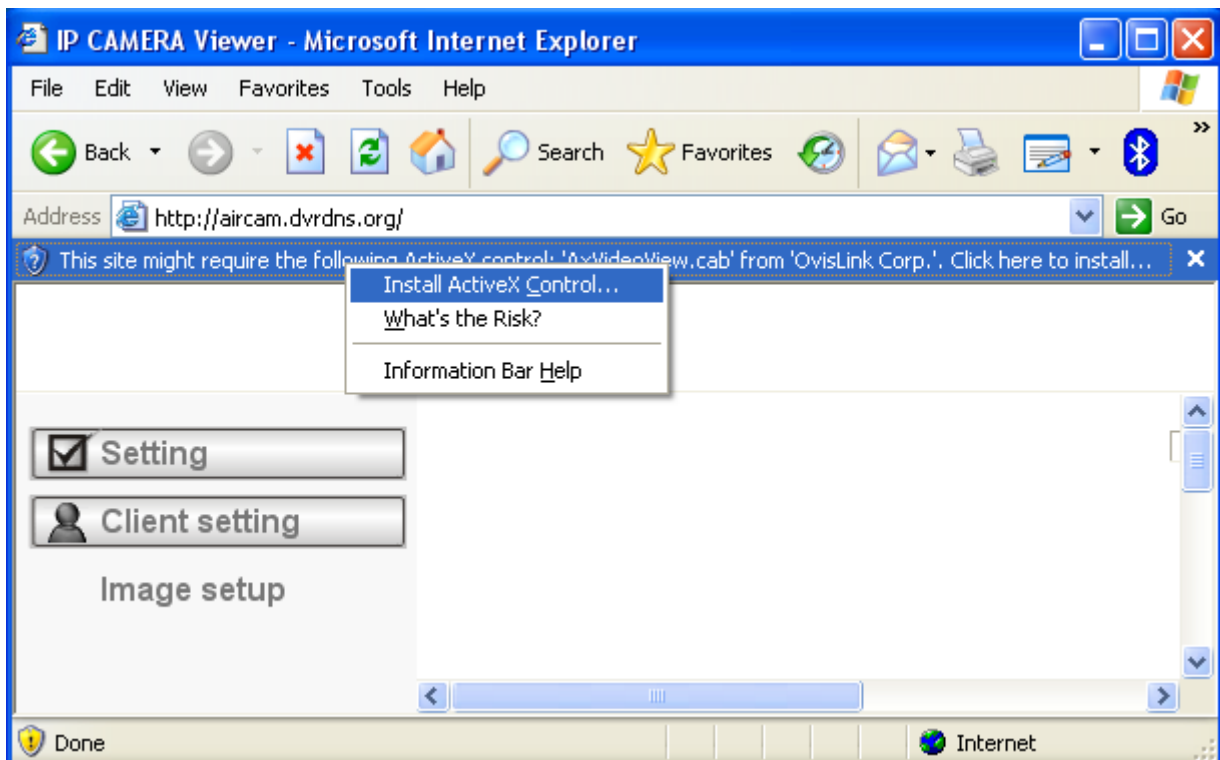
Enable Virtual Server

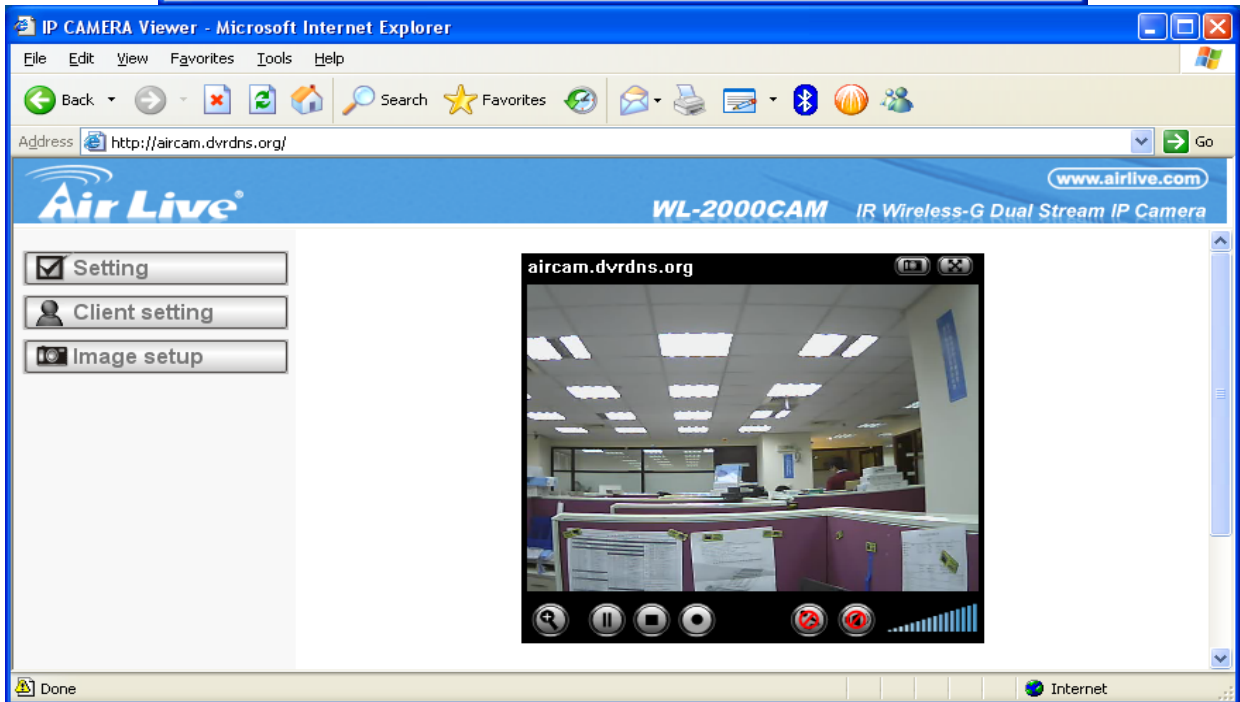
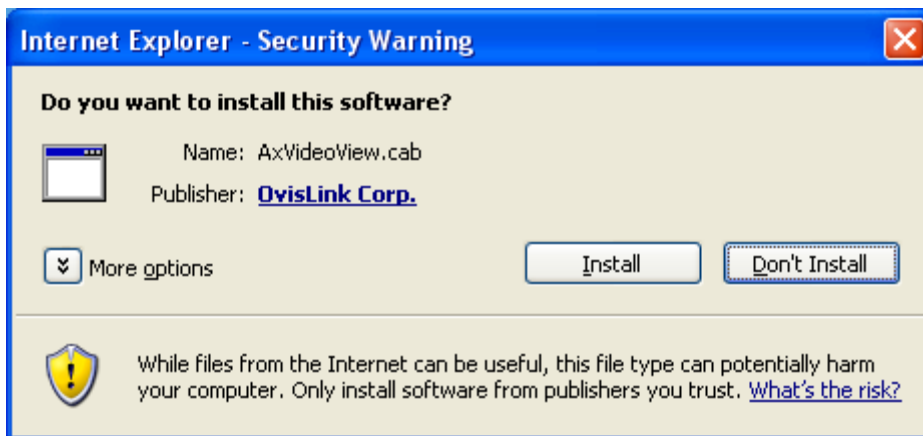
Private IP	Private Port	Type	Public Port	Comment
<input type="text"/>	<input type="text"/>	Both <input type="button" value="v"/>	<input type="text"/>	<input type="text"/>

Current Virtual Server Table

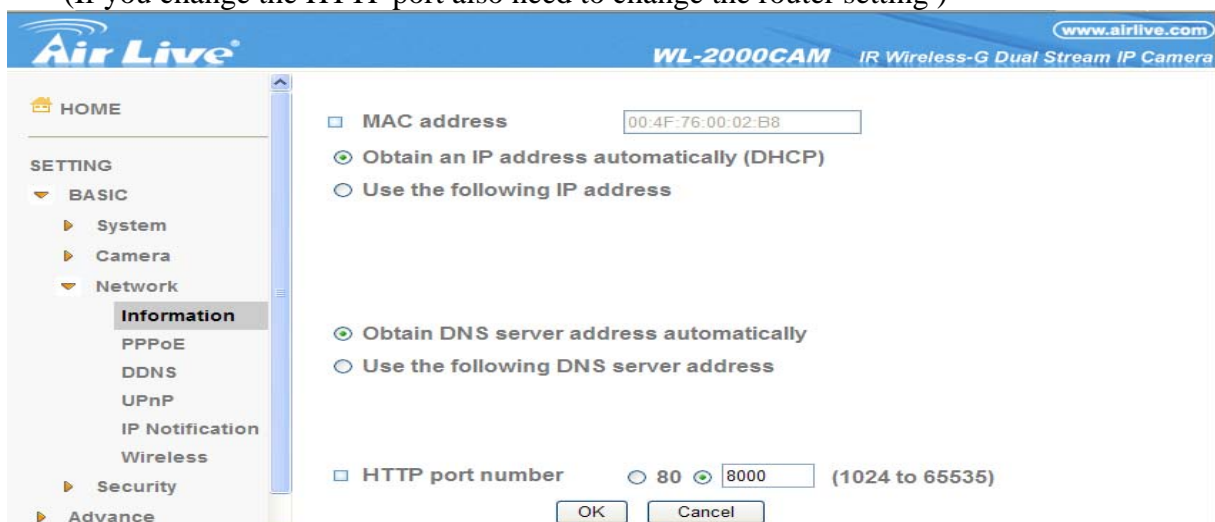
NO.	Private IP	Private Port	Type	Public Port	Comment	Select
1	192.168.2.101	80	TCP	80	IPCAM	<input type="checkbox"/>

3. When remote login the IPCAM. Please remember install ActiveX control.





4. If your TCP port 80 have use by another service. Please change the port to none use port. (If you change the HTTP port also need to change the router setting)



SETTING—BASIC--NETWORK--Information page