

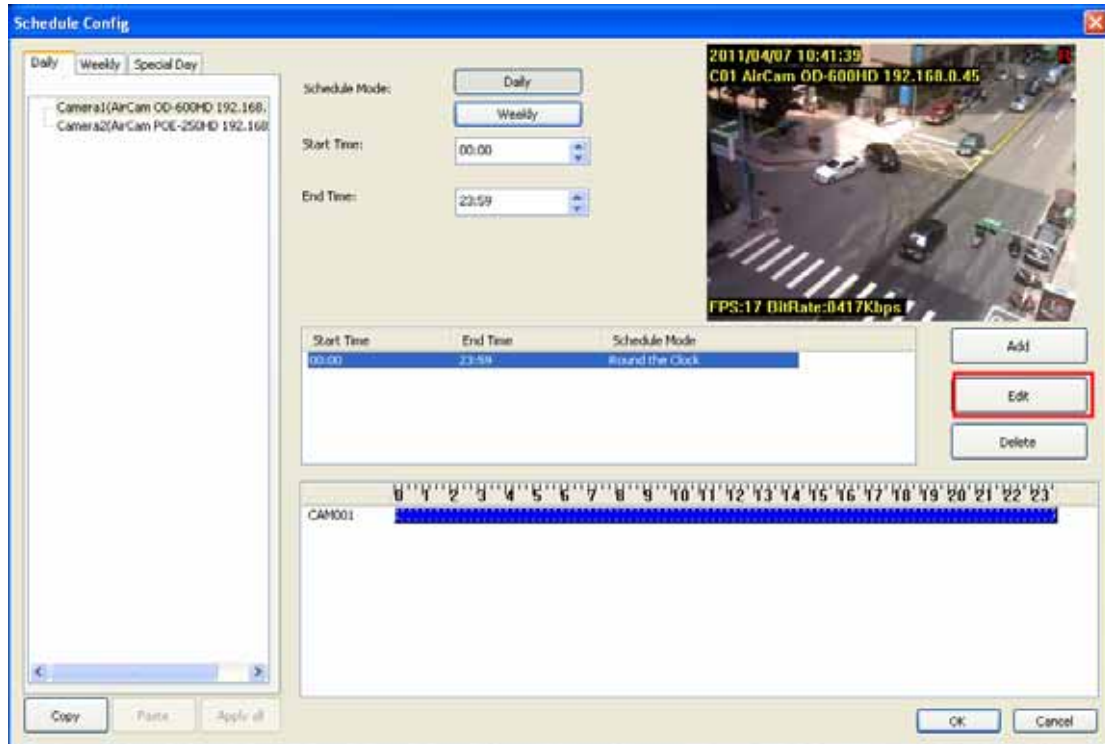
Q: I want to recording by DI detection on Campro HD, How do set it?

A:

1.) Please click on Schedule Config button.



2.) Please click on Edit button.



3.) Please click on DI detection button and Press the OK button.



PS.(About detail setting information, please refer to User's Manual
P.65,thanks.)

User's Manual download link:

http://69.64.87.53/airlive_fileserver/uploads/English/support/CamProHD_manual_Web.pdf