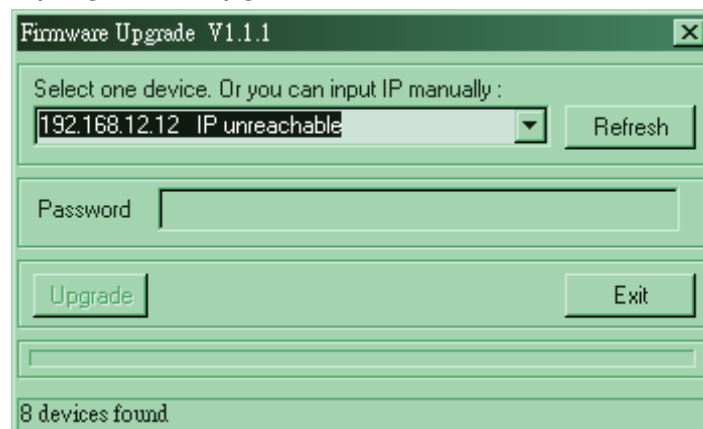


HOW to use TFTP to make the IP-1000R rework normally

1. **Purpose:** Some bugs might cause IP-1000R Status Led flashing irregularly, and disallow user to configure its Web managed page. If so, user can use “TFTP mode” to solve the issue.
2. **Symptom:** Status Led flashes abnormally.
 - a. Status Led flashes very fast
 - b. Status Led flashed irregularly.

P.S. User can check the router’s working status based on Status Led. If Status Led flashes the light per second, it means router works normally.

3. **Solution:**
 - a. If IP-1000R DHCP server function is still working, then please go to step c, otherwise please go to Step b.
 - b. Unplug power of router. Press and hold Reset button and then power on the router till Status Led start flashing. When Status Led is flashing very fast, it indicates the router is at TFTP mode. If router’s led does not flash quickly, please try again.
 - c. Run the firmware upgraded file and click “Refresh” button, it should show you the information about router you connected. You can download the latest version firmware from our website, and it also contains a program to upgrade firmware.



- d. If utility finds a device and displays “unreachable”, then you should configure PC with fixed IP of same subnet address.
- e. When everything is fine, then you can click “Upgrade” button to upgrade the firmware.

The image shows a software window titled "Firmware Upgrade V1.1.1". Inside the window, there is a text prompt "Select one device. Or you can input IP manually :". Below this prompt is a text input field containing the IP address "192.168.123.217" and a small downward arrow icon to its right. To the right of the input field is a button labeled "Refresh". Below the IP input section is a "Password" label followed by an empty text input field. At the bottom of the main content area are two buttons: "Upgrade" on the left and "Exit" on the right. Below these buttons is a horizontal progress bar. At the very bottom of the window is a status bar with the text "Please input the password".

- f. When you upgrade firmware successfully, please press and hold the reset button for 10 or more seconds to reset router as default setting. If the upgrade process is failed, please try again the process from step b.