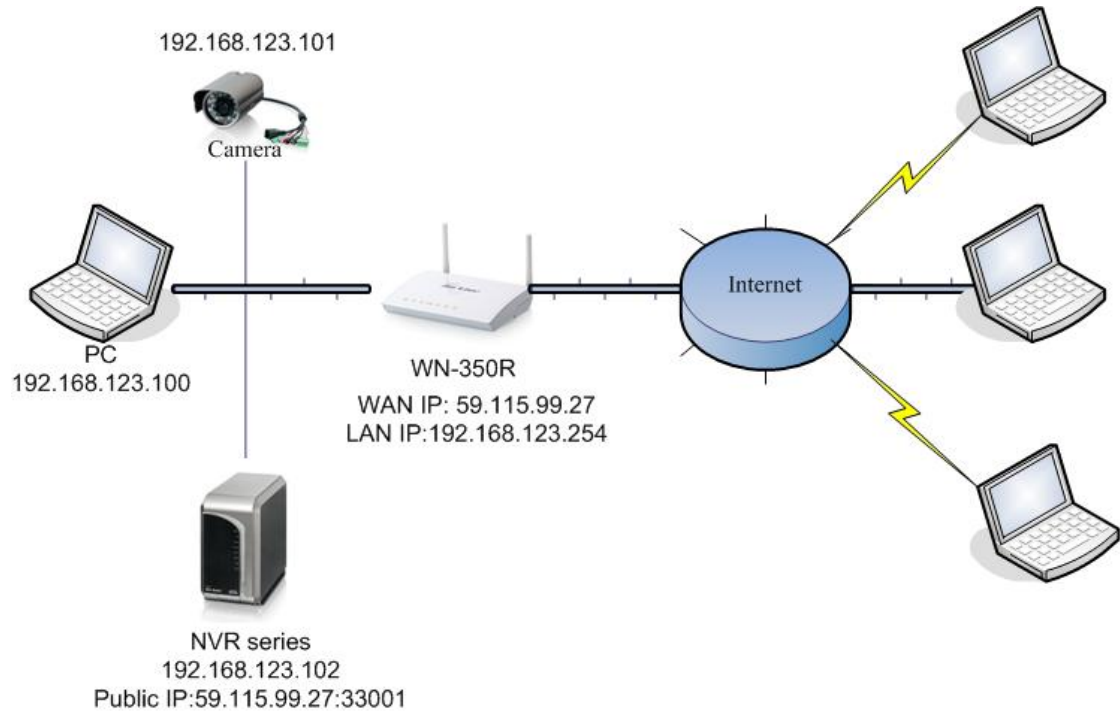


How to views Camera with NVR Series on Internet?

Ans:



1. Setting RTSP port on Camera

Setting RTSP port is 554.

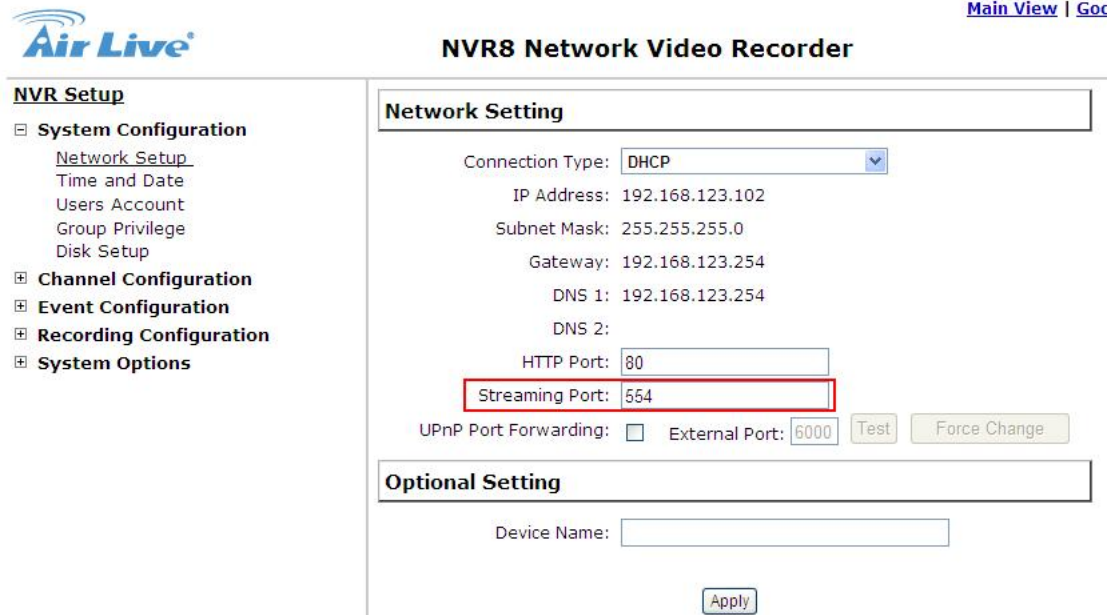
Network	DDNS	PPPoE	Streaming	UPnP	IP Filter	IP Notification
---------	------	-------	------------------	------	-----------	-----------------

RTSP Port	<input type="text" value="554"/>	(554 ~ 65535)
RTP Port	<input type="text" value="50000"/> ~ <input type="text" value="50999"/>	(1024 ~ 65535)

OK Cancel

2. Setting Streaming Port on NVR.

Setting Streaming Port is 554.



Air Live [Main View](#) | [Go](#)

NVR8 Network Video Recorder

NVR Setup

- System Configuration
 - Network Setup
 - Time and Date
 - Users Account
 - Group Privilege
 - Disk Setup
- Channel Configuration
- Event Configuration
- Recording Configuration
- System Options

Network Setting

Connection Type:

IP Address: 192.168.123.102

Subnet Mask: 255.255.255.0

Gateway: 192.168.123.254

DNS 1: 192.168.123.254

DNS 2:

HTTP Port:

Streaming Port:

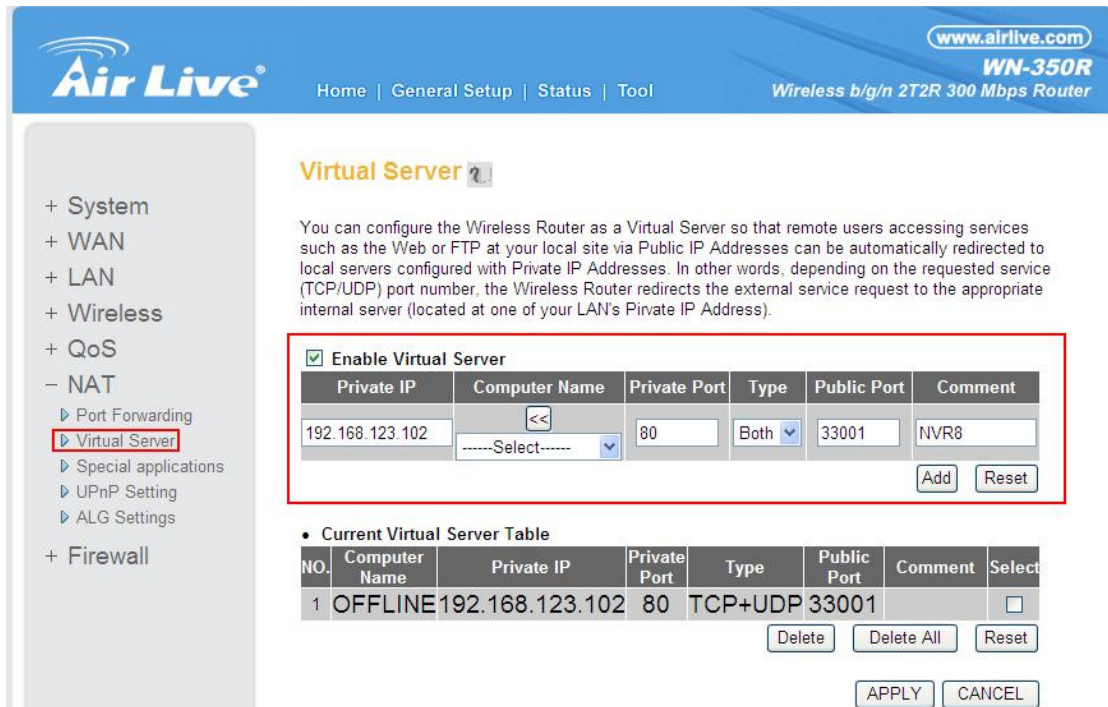
UPnP Port Forwarding: External Port:

Optional Setting

Device Name:

3. Setting NVR on Internet.

- Select Virtual Server function on WN-350R.
- Setting NVR private port:80 to Public port:33001.



Air Live www.airlive.com

Home | General Setup | Status | Tool **WN-350R**
Wireless b/g/n 2T2R 300 Mbps Router

Virtual Server ?

You can configure the Wireless Router as a Virtual Server so that remote users accessing services such as the Web or FTP at your local site via Public IP Addresses can be automatically redirected to local servers configured with Private IP Addresses. In other words, depending on the requested service (TCP/UDP) port number, the Wireless Router redirects the external service request to the appropriate internal server (located at one of your LAN's Private IP Address).

Enable Virtual Server

Private IP	Computer Name	Private Port	Type	Public Port	Comment
192.168.123.102	<< -----Select-----	<input type="text" value="80"/>	Both	<input type="text" value="33001"/>	NVR8

Current Virtual Server Table

NO.	Computer Name	Private IP	Private Port	Type	Public Port	Comment	Select
1	OFFLINE	192.168.123.102	80	TCP+UDP	33001		<input type="checkbox"/>

4. Open video port on WN-350R

- a. Select Special application function on WN-350R.
- b. Open NVR video port(554) on WN-350R

Special Applications

Some applications require multiple connections, such as Internet gaming, video conferencing, Internet telephony and others. These applications cannot work when Network Address Translation (NAT) is enabled. If you need to run applications that require multiple connections, specify the port normally associated with an application in the "Trigger Port" field, select the protocol type as TCP or UDP, then enter the public ports associated with the trigger port to open them for inbound traffic. Note: The range of the Trigger Port is 1 to 65535.

Enable Special Applications				
IP Address	Computer Name	TCP Port to Open	UDP Port to Open	Comment
192.168.123.102	<< Select >>	554	554	Video port

Popular Applications : Select Game Add Add Reset

Current Trigger-Port Table

NO.	Computer Name	IP Address	TCP Port to Open	UDP Port to Open	Comment	Select
1	OFFLINE	192.168.123.102	554	554	Video port	<input type="checkbox"/>

Delete Delete All Reset APPLY CANCEL

5. Test Results

NVR URL: <http://59.115.99.27:33001/>

AirLive NVR8 - Windows Internet Explorer

http://59.115.99.27:33001/

File Edit View Favorites Tools Help

AirLive NVR8

Main View | Google Map Monitor | Local MAP Monitor | NVR Setup | Channel Status

System Time: January 10, 2011 16:34:42 User: admin

Air Live NVR8 Network Video Recorder

Live Sequence Playback 1 AirCam OD-325HD 1 FPS

ALL Group1 1. AirCam OD-325HD W/A W/A W/A Group2 W/A W/A W/A W/A

PTZ Preset

1 2 3 4 5 6 7 8 9 10

Far Near Auto Close Open Auto

Done Internet 100%