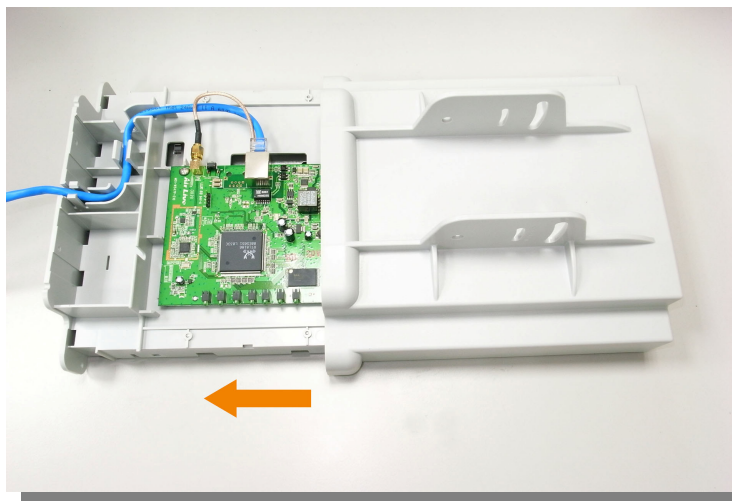


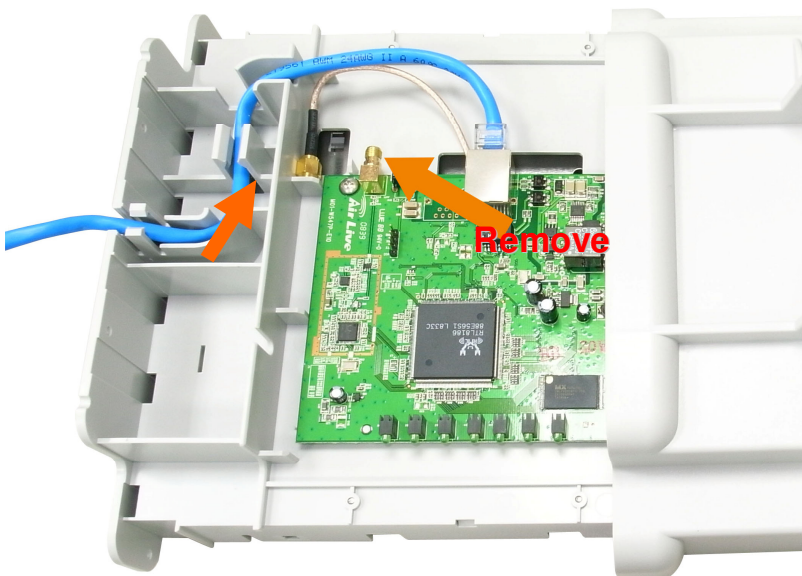
How to Connect WH-5420CPE to outdoor Antenna

To connect the WHA-5420CPE with an external antenna, you would need a male MMCX to female N-Type cable. You can purchase the RG-316-SNF-30 converter cable from AirLive for this purpose.

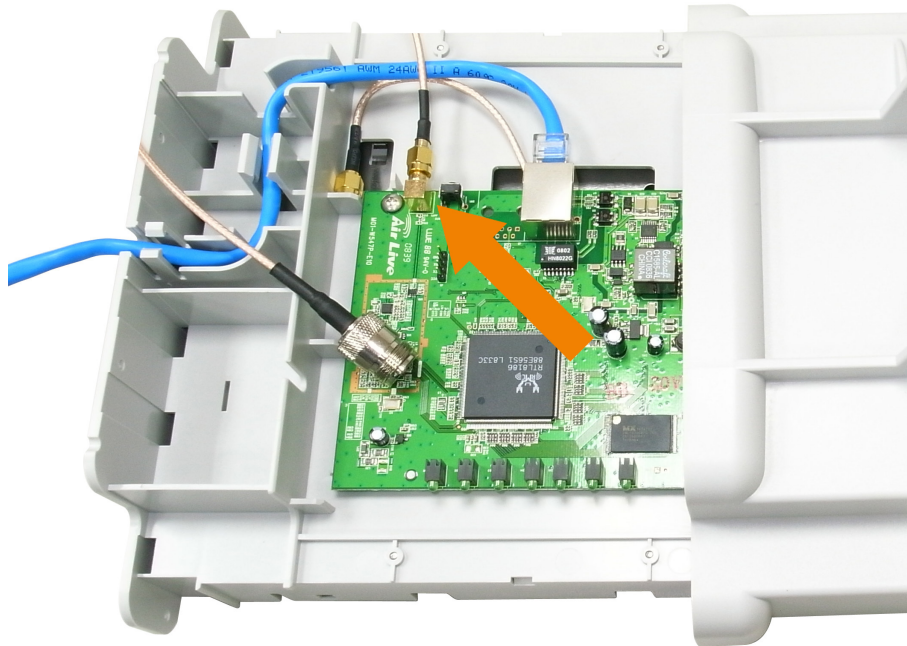
1. Slide out the WH-5420CPE internal housing.



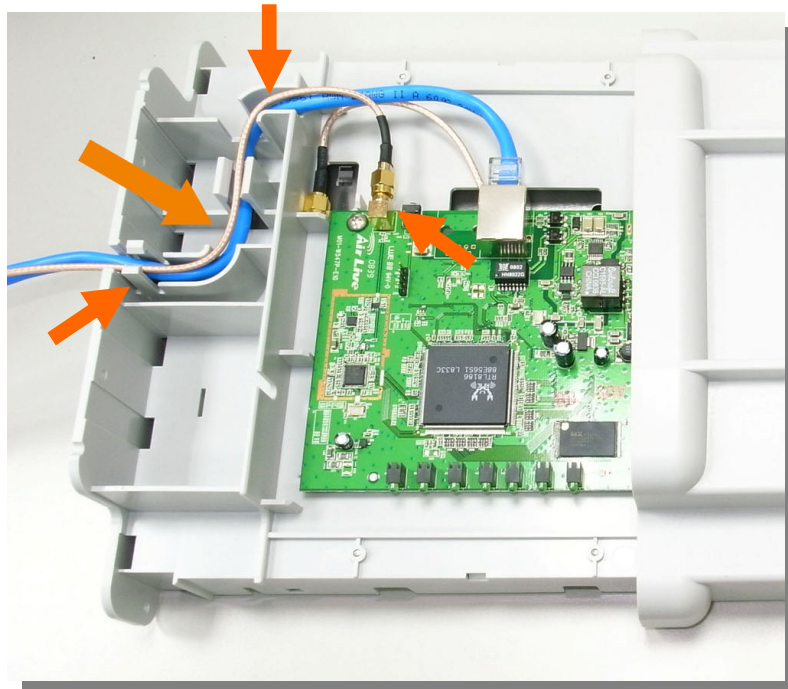
2. Remove the onboard antenna cable from the antenna connector as indicated below.



3. Now, connect one end of the converter cable(RG-316-SNF-30) to the R-SMA antenna connector



4. Route the antenna cable along the same path as the PoE cable.



5. Now, please close the housing cover. You can now connect outdoor antenna cable to the N-Type antenna connector.

