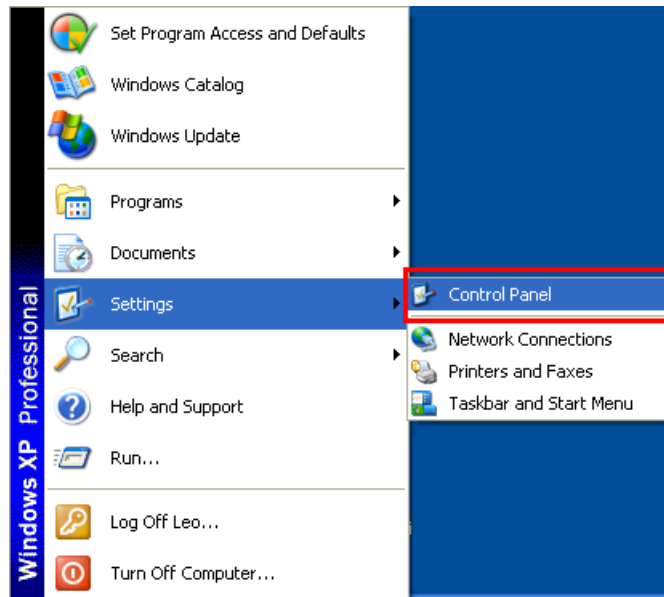


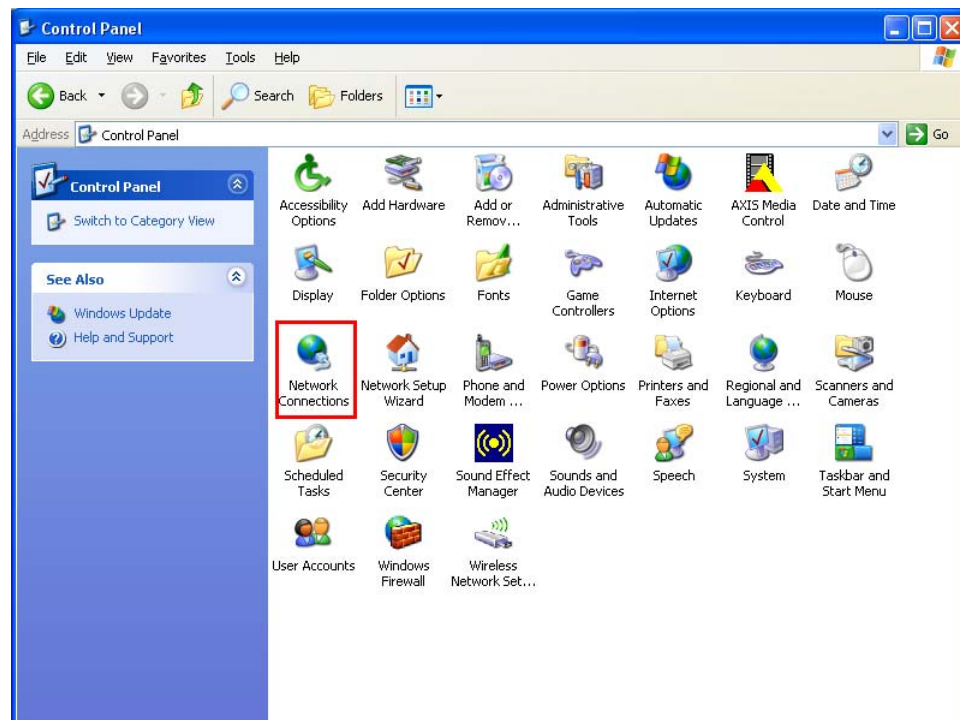
Step 1

Enter “Control Panel”



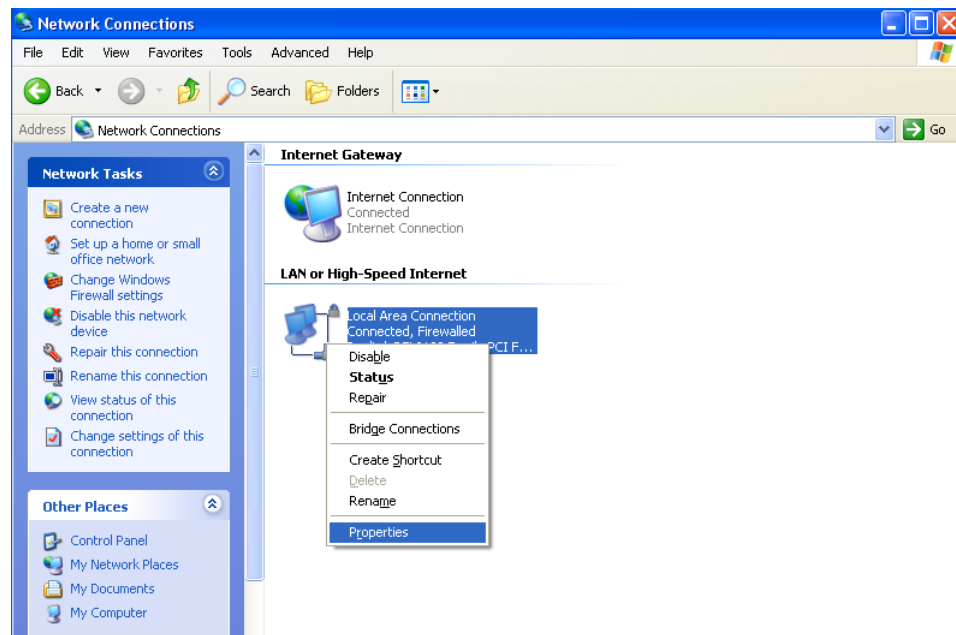
Step 2

Click “Network Connections” to set up the network



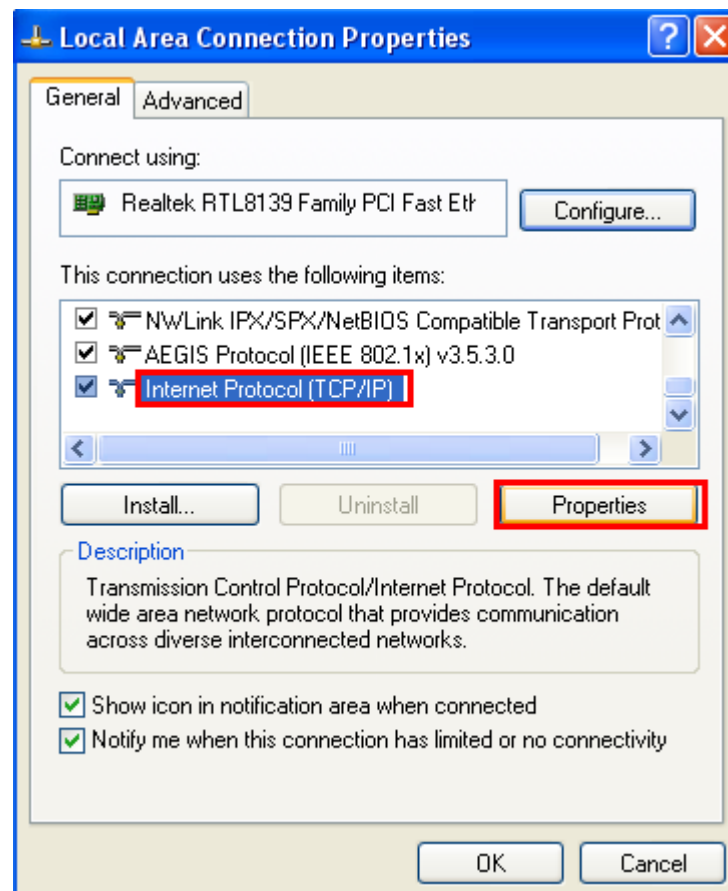
Step 3

Right click to “Local Area Connection” to choose “Properties”



Step 4

Choose “Internet Protocol (TCP/IP)”, and then click its “Properties”



Step 5

Type IP address in "IP address". Do not use IP same with default IP of WL-5460AP

