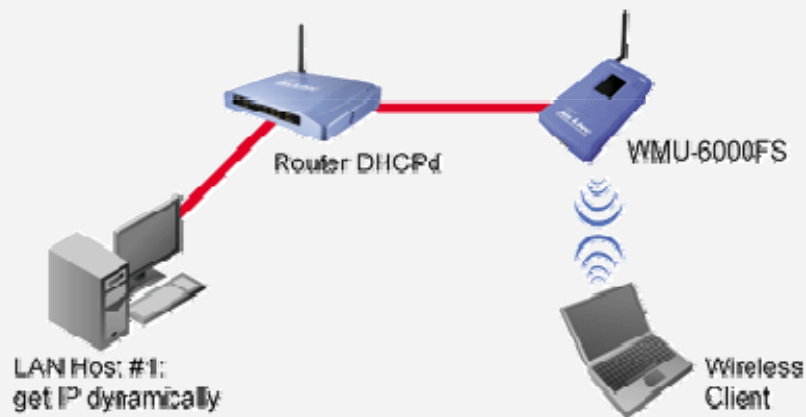


Q: How can I use the wireless function?

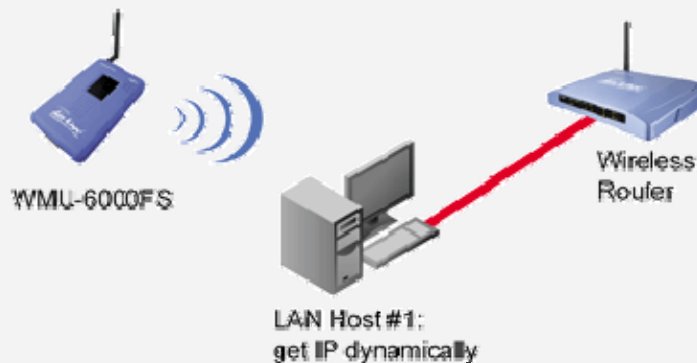
A: Generally speaking, there are four modes to setup in this device. The common function is "AP mode". The user can make this device as Wireless AP device as follows:

First, the wireless client sets up the same SSID with **WMU-6000FS** and get IP from Router. Then Wireless client can associate the network or roam Internet via Router.



Wireless Client Mode:

First, please configure the wireless setting of WMU-6000FS via wire. Then use Scan AP of AP-List and join it. Plug up the cable form WMU-6000FS. The client from LAN can use "Configure" utility to Query.



WDS only mode:

WDS->ireless Distribution system. This device also supports this function. How to configure this in your circumstance? The below Figure1 is for the reference. First, check which channel you want to use. For example, channel 10. Scan other AP which channel is 10 and supports WDS function. Second, add the wireless MAC address of **WMU-6000FS** in this Wireless Router # 2. (Figure2). And use Scan AP to find the wireless which SSID is "WR-2" and join it in the list. Third, if it is normal, LAN-Host#1 can find the devices, like

Wireless Router #2 and LAN-Host#2.

Figure 1:

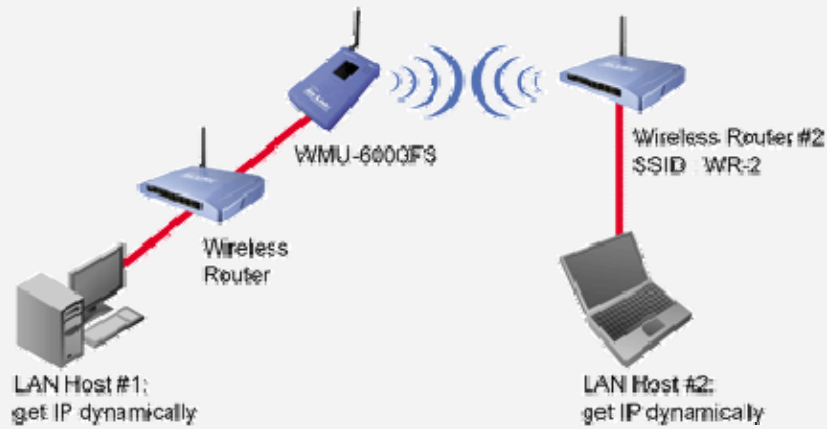
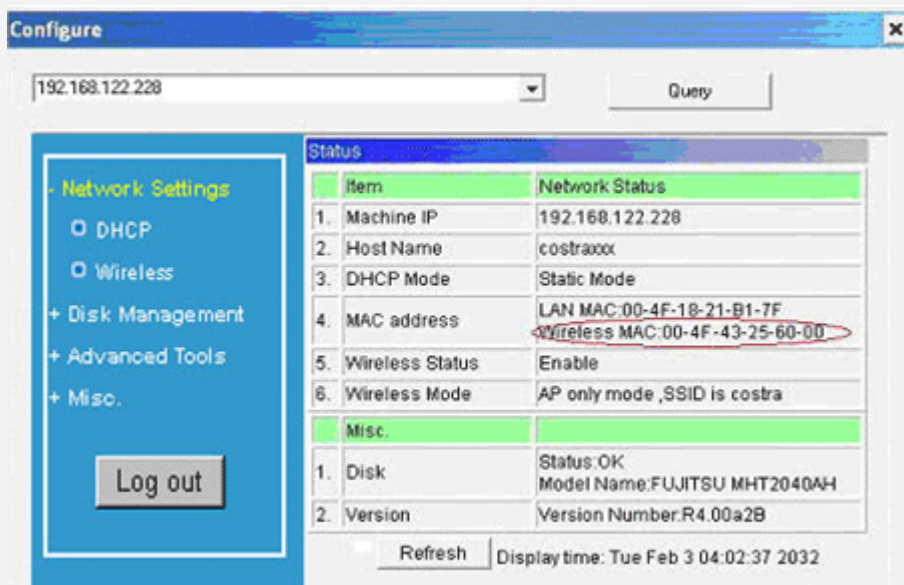


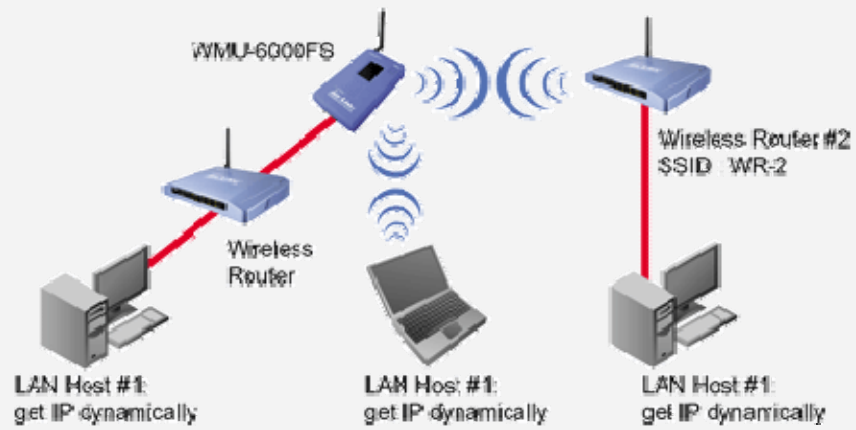
Figure2:



WDS Hybrid mode:

This device also supports WDS and AP mode at the same time. How to configure this in your circumstance?

The below figure is for the reference.



For the setting of WDS, please refer to the above WDS only mode.

For AP setting, please refer to the AP mode.