

How do I configure User Access to my WMU6000FS

1. Use default password "airlive"

The screenshot shows the web console interface for the AirLive WMU-6000FS. The browser window title is "AirLive WMU-6000FS Portable AP Storage Web-Console - Microsoft Internet Explorer". The address bar shows the URL "http://192.168.123.254:2005/index2.htm". The page features the AirLive logo and navigation buttons for "Quick Setup" and "Status".

On the left side, there is a "System Password" section with a password input field containing ten dots and the text "(default: airtlive)". Below it is a "Log in" button.

The main content area displays a "Status" table with the following data:

Item	Status
Machine IP	192.168.123.254
Host Name	WMU-6000FS
DHCP Mode	Auto Mode
MAC address	LAN MAC:00-4F-67-00-7F-6E Wireless MAC:00-4F-67-00-7F-6D
Wireless Status	Enable
Wireless Mode	AP only mode ,SSID is airtlive.
Devices	DISK:OK;USB1:Not Ready;USB2:OK;
Version	Version Number:R4.00b6

Below the table are two buttons: "Refresh" and "Devices information". At the bottom of the page, it says "Display time: Fri May 19 09:50:05 2006".

The Windows taskbar at the bottom shows the "完成" (Done) button, the "開始" (Start) button, and the system tray with the time "上午 09:52" (9:52 AM).

2. Follow the step

AirLive WMU-6000FS Portable AP Storage Web-Console - Microsoft Internet Explorer

檔案(F) 編輯(E) 檢視(V) 我的最愛(A) 工具(T) 說明(H)

← 上一頁 → 搜尋 我的最愛

網址(D) http://192.168.123.254:2005/index2.htm 移至 連結 Norton AntiVirus

Air Live Quick Setup Status

OvisLink Corp. www.ovislink.com.tw

File Sharing
Shared Storage Configuration:

Host Name: WMU-6000FS

WorkGroup: Mshome

Server Comment: samba server

Language: United States, Canada(cp437)

Save Undo **Advanced samba setting**

1: Network Settings
2: Disk Management
3: File Sharing

開始 AirLive WMU-6000F... 1 - 小畫家 網際網路 上午 09:55



- + Network Settings
- Disk Management
 - Disk Utility
 - File Sharing
- + Advanced Tools
- + Misc.

User Access Configuration

▶ Security Level Guest Only Authorization User 1 2

"Guest Only" will share all the storage for everyone!!

▶ FTP Disable Enable ▶ FTP MAX Clients 5



- + Network Settings
- Disk Management
 - Disk Utility
 - File Sharing
- + Advanced Tools
- + Misc.

User Access Configuration

▶ Security Level Guest Only Authorization User

▶ Configure the username and user password:(MAX:5 user.)

User Name	Password	Option
<input type="text" value="123"/> 1	<input type="text" value="12345"/> 2	<input type="button" value="Add"/> 3
		<input type="button" value="delete"/>

▶ FTP Disable Enable ▶ FTP MAX Clients



- + Network Settings
- Disk Management
 - Disk Utility
 - File Sharing
- + Advanced Tools
- + Misc.

User Access Configuration

▶ Security Level Guest Only Authorization User

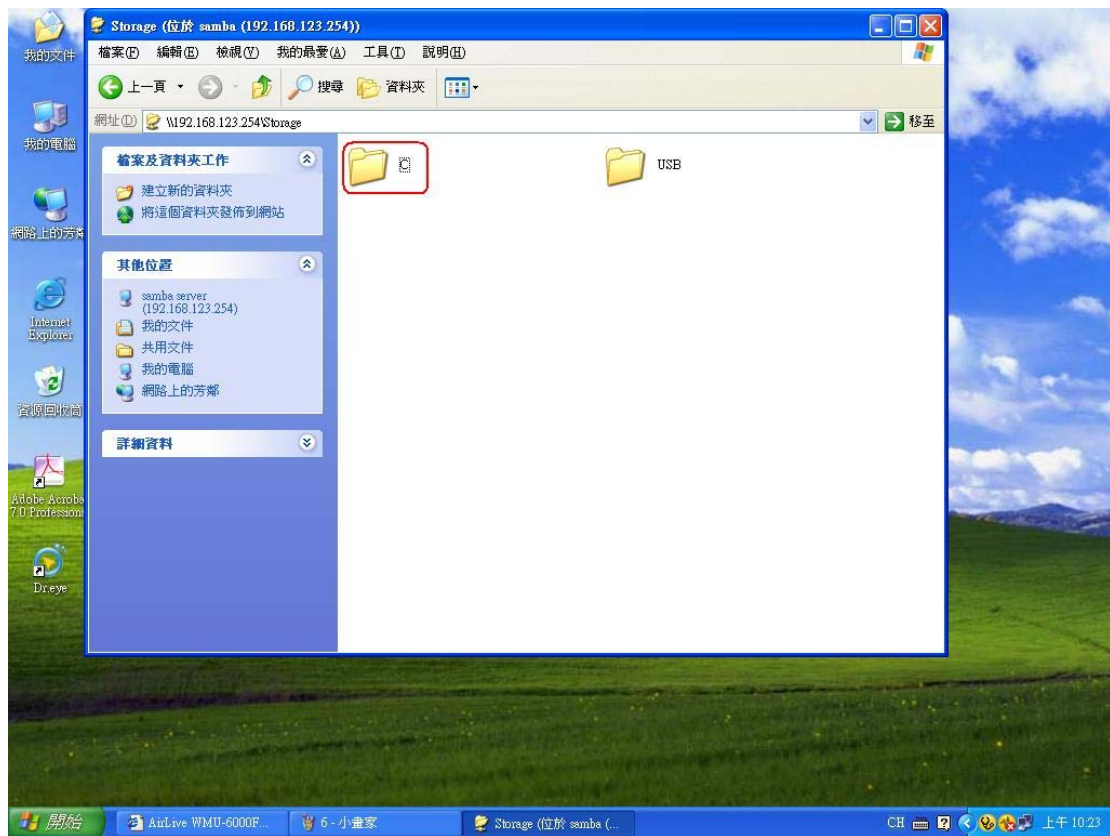
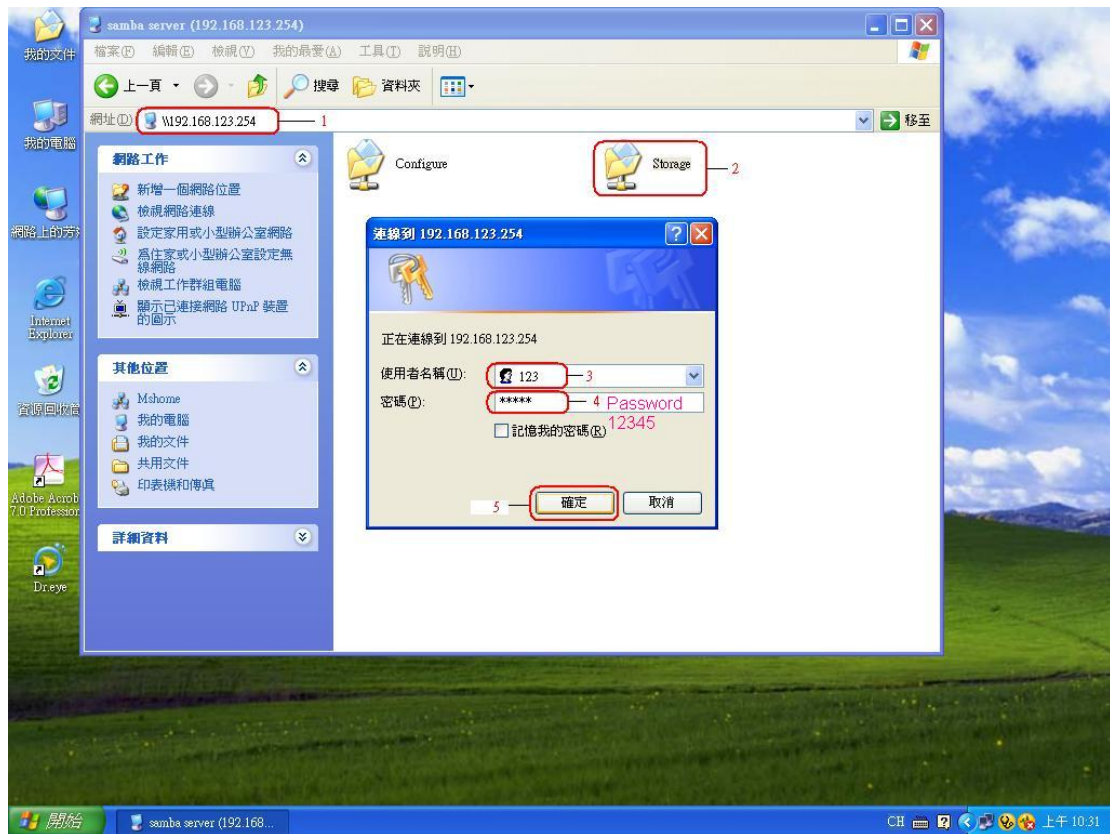
▶ Configure the username and user password:(MAX:5 user.)

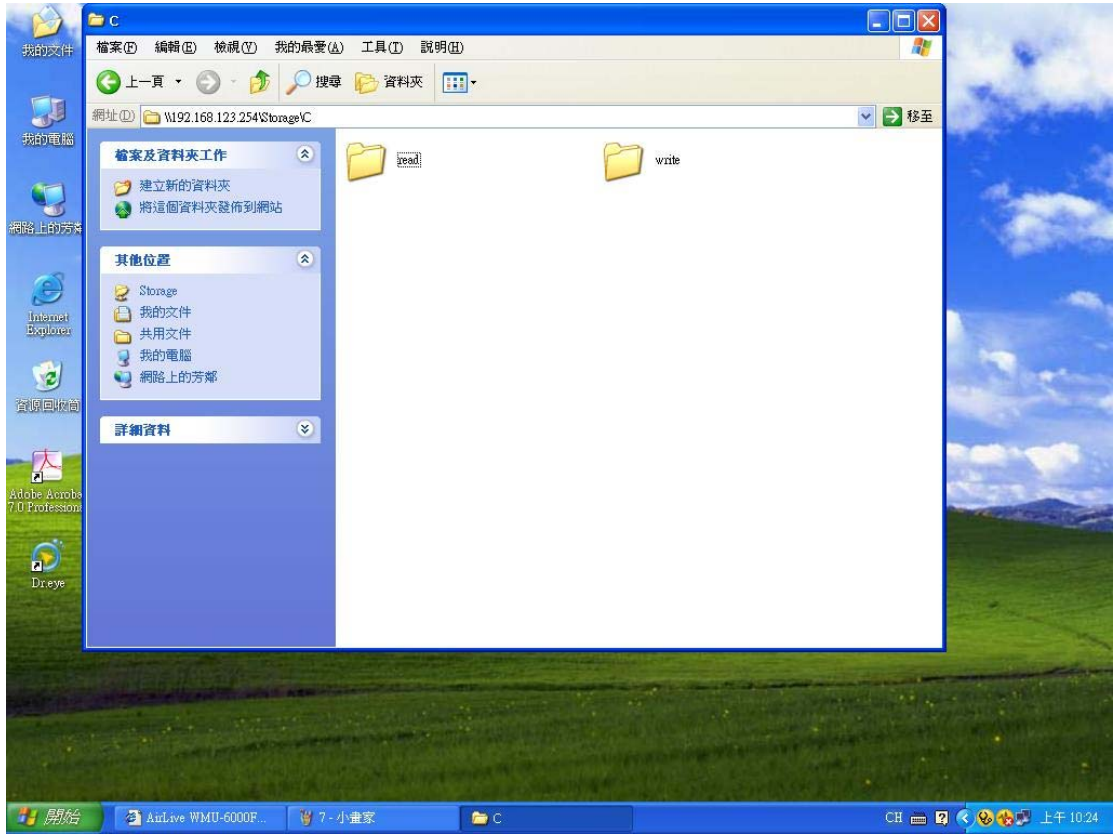
User Name	Password	Option
<input type="text"/>	<input type="text"/>	<input type="button" value="Add"/>
123	12345	<input type="button" value="delete"/>

▶ FTP Disable Enable ▶ FTP MAX Clients 5

Authorization user list changed right now!

3 Test. It will ask for user name and password first time you log in.





PS: When you access the 6000fs or 5000fs first time ,it will ask password,if you didn't logout the 6000fs or 5000fs, the same computer will not be inquired the password again. In other words, if you did not shut down the computer or deleted the user name and password information,it will not be inquired the user name and password again.

