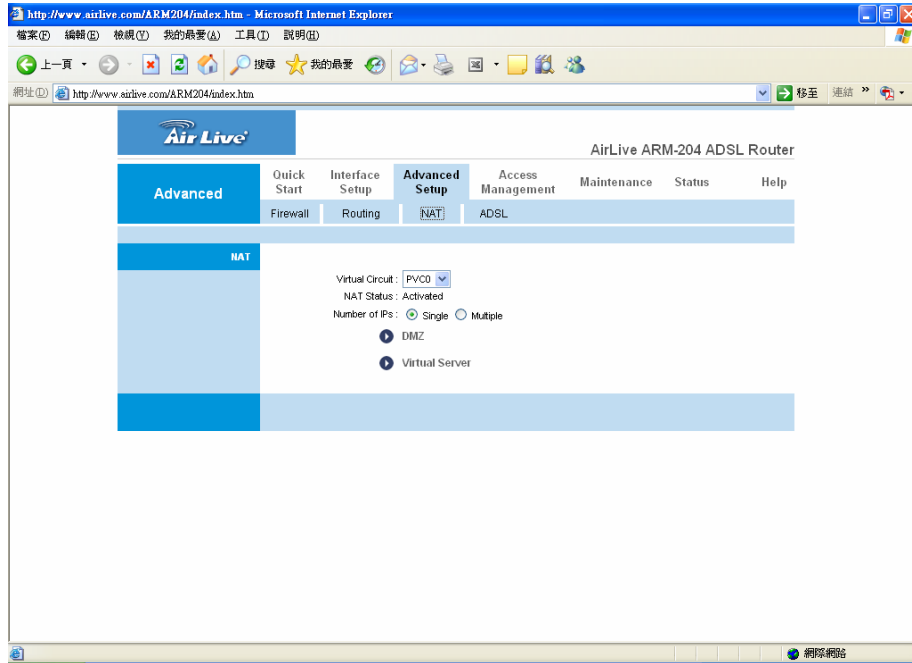
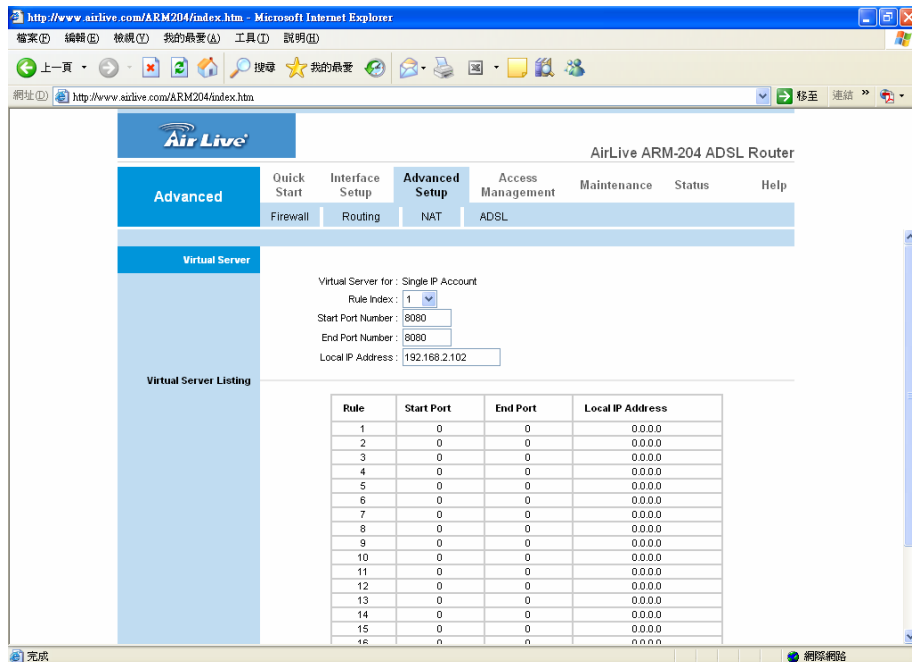


How to configure virtual server to IP Camera

Please login to your device and click advanced setup- Virtual Server.

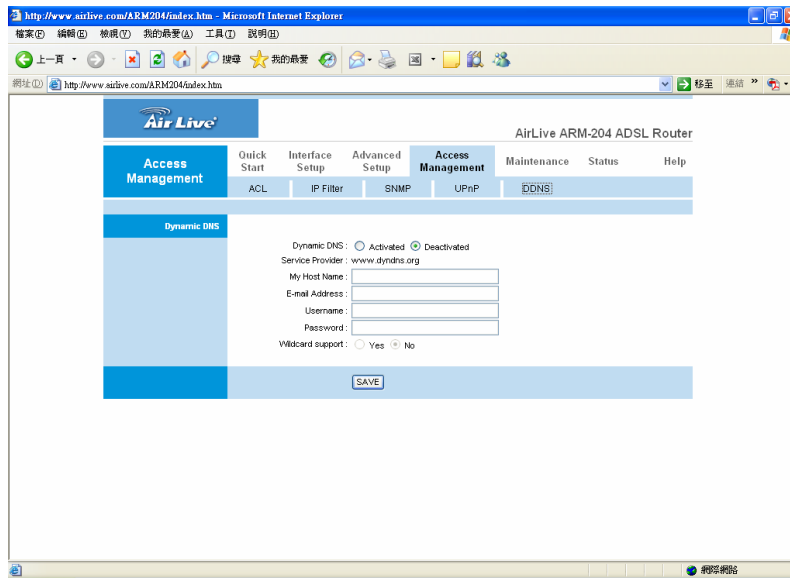


Then insert your ip camera information example your ip camera address:
192.168.2.102 PORT 8080



Click Ok to save

Then insert your DDNS information here.



CONFIGURE YOUR CAMERA

Then login to your ip camera click Advanced-Port

And setup your PORT than you want to link to internet.

SET AS 8080

