

## Declaration of Conformity

We, Manufacturer/Importer

**OvisLink Corp.**

5F., NO.6, Lane 130, Min-Chuan Rd., Hsin-Tien City, Taipei County, Taiwan

Declare that the product

**802.11G Wireless Outdoor CPE**

**AirLive AirMax2**

**is in conformity with**

In accordance with 2004/108/EC Directive, 1999/5 EC-R & TTE Directive and 2009/125/EC Directive

### Clause

- EN 300 328 v1.7.1

### Description

Electromagnetic compatibility and Radio spectrum Matters (ERM); Wideband transmission equipment operating in the 2.4GHz ISM band And using spread spectrum modulation techniques; Part 1 : technical Characteristics and test conditions Part2 : Harmonized EN covering Essential requirements under article 3.2 of the R&TTE Directive.

- EN 301 489-01 v 1.8.1
- EN 301 489-17 v 1.3.2

Electromagnetic compatibility and Radio spectrum Matters (ERM); Electromagnetic compatibility(EMC) standard for radio equipment and Services; Part 17 : Specific conditions for wideband data and HIPERLAN equipment

- EN 50385:2002

Product standard to demonstrate the Compliance of radio base stations and Fixed terminal stations for wireless Telecommunication System with the Basic restrictions or the reference levels related to human exposure to radio Frequency electromagnetic fields ( 110 MHz– 40 GHz ) - General public

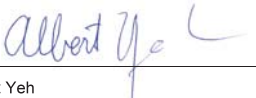
- EN 60950-1 2006+A11:2009

Safety for information technology equipment including electrical Business equipment

- CE marking



### Manufacturer/Importer

Signature :   
Name : Albert Yeh

Position/ Title : Vice President Date : 2009/11/26

## Regulatory Approvals

### FCC Statement

This equipment has been tested and found to comply with the limits for a Class B digital device pursuant to Part 15 of the FCC Rules. These limits are designed to provide reasonable protection against harmful interferences when the equipment is operating in a commercial area. This equipment generates, uses and may radiate radio frequency energy, and if not installed in accordance with the user guide, may cause interference in the transmission of radio communications. If operating in a residential area, it is probable this equipment will cause harmful interference, in which case the user will be required to try to correct this interference using his own means.

### FCC Radiation Exposure Statement

This equipment complies with FCC radiation exposure limits set forth for an uncontrolled environment. This equipment should be installed and operated with minimum distance 20cm between the radiator & your body.  
This transmitter must not be co-located or operating in conjunction with any other antenna or transmitter

### CE Marking Warning

This is a Class B product. In a domestic environment this product may cause radio interference in which case the user may be required to take adequate measures.

### CE Statement

This product complies with the 99/5/EEC directives, including the following safety and EMC standards:

- EN 300 328 v1.7.1

Electromagnetic compatibility and Radio spectrum Matters (ERM); Wideband transmission equipment operating in the 2.4GHz ISM band And using spread spectrum modulation techniques; Part 1 : technical Characteristics and test conditions Part2 : Harmonized EN covering Essential requirements under article 3.2 of the R&TTE Directive

- EN 301 489-01 V1.8.1
- EN 301 489-17 V1.3.2

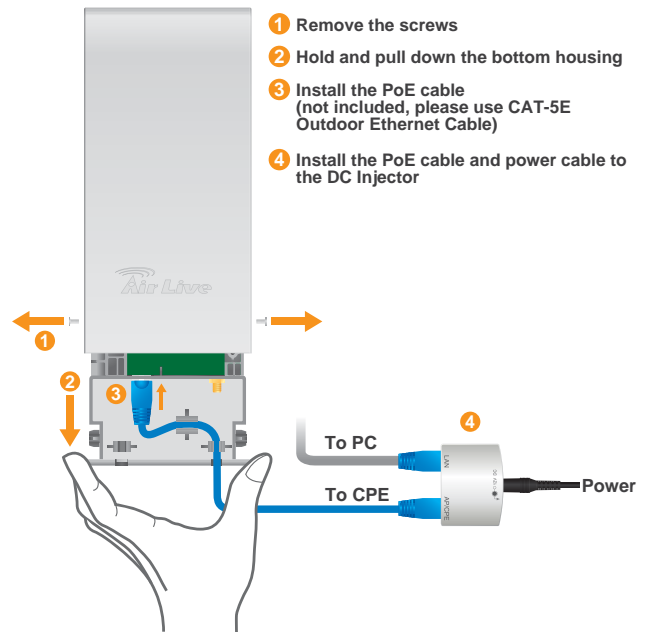
Electromagnetic compatibility and Radio spectrum Matters (ERM); Electromagnetic compatibility(EMC) standard for radio equipment and Services; Part 17 : Specific conditions for wideband data and HIPERLAN equipment

- EN 50385:2002

Product standard to demonstrate the Compliance of radio base stations and Fixed terminal stations for wireless Telecommunication System with the Basic restrictions or the reference levels related to human exposure to radio Frequency electromagnetic fields ( 110 MHz– 40 GHz ) - General public

- EN 60950-1 2006+A11:2009

Safety for information technology equipment including electrical Business equipment



### • Ecodesign Directive

- (EC) No 1275/2008

Implementing Directive 2009/125/EC of the European Parliament and of the Council with regard to eco-design requirements for standby and off mode electric power consumption of electrical and electronic household and office equipment.

- (EC) No 278/2009

Implementing Directive 2009/125/EC of the European Parliament and of the Council with regard to eco-design requirements for no-load condition electric power consumption and average active efficiency of external power supplies.

### • Directive 1999 / 5 / EC

#### EN

OvisLink Corporation declares that this device is in compliance with the essential requirements and other relevant provisions of directive 1999/5/EC.

#### DE

OvisLink Corporation erklärt hiermit, dass dieses Gerät den grundlegenden Vorschriften und anderen relevanten Bestimmungen der EG-Richtlinie 1995/5/EC entspricht.

#### FR

OvisLink Corporation déclare, par le biais de ce document, que ce dispositif est conforme aux conditions essentielles de la directive 99/05/CE et, par conséquent, assume la responsabilité de la véracité des informations suivantes.

#### HU

Az OvisLink Corporation kijelenti, hogy ez a berendezés megfelel az 1999/05/CE irányelv alapvető követelményeinek és egyéb vonatkozó rendelkezéseinek.

#### JP

この装置が指導的な1999/5/ECの必要な条件として他の関連した準備に従ってあるとOvisLink Corporationは宣言する。

#### PT

A OvisLink Corporation declara que este dispositivo está em conformidade com os requisitos essenciais e outras solicitações relevantes da Directiva 1999/5/EC.

#### SK

OvisLink Corporation potvrdzuje, že toto zariadenie vyhovuje požiadavkám a ďalším predpisom smernice 1999/5/EC.

#### CZ

OvisLink Corporation deklaruje, že toto zařízení vyhovuje základním požadavkům a dalším závazným ustanovením z nařízení 1999/5/EC.

#### ES

OvisLink Corporation declara que el dispositivo cumple con los requerimientos básicos y otras facilidades relevantes de la directriz 1999/5/EC.

#### GR

Η εταιρία OvisLink δηλώνει ότι η συσκευή αυτή είναι σύμφωνη με τις ουσιαστικές απαιτήσεις και τις υπολοίπες σχετικές διατάξεις της οδηγίας 1999/5/EC.

#### IT

Ovislink Corporation dichiara che questa periferica è realizzata in conformità alle prescrizioni e alle altre rilevanti misure della direttiva 1999/5/EC.

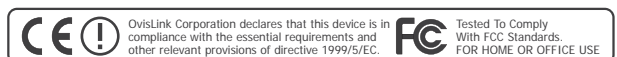
#### PL

OvisLink deklaruje zgodność swoich urządzeń z istotnymi wymaganiami oraz innymi istotnymi przepisami dyrektywy 1999/5/EC.

#### RU

Компания OvisLink Corporation заявляет, что это устройство отвечает основным требованиям и прочим родственным условиям, изложенным в директиве 1999/5/EC.

This equipment may be used in AT, BE, CY, CZ, DK, EE, FI, FR, DE, GR, HU, IE, IT, LV, LT, LU, MT, NL, PL, PT, SK, SI, ES, SE, GB, IS, LI, NO, CH, BG, RO, TR



## EN English

### Important Information

- The default IP address is **192.168.1.1**
- The default user name is: **admin**
- The default password is: **airlive**
- The default operation mode is: **Client mode**
- By default, the ClearSignal Technology is disabled. If your environment has a lot of performance, please enable it on the "Wireless Settings" menu.
- For more information, please read the user's guide on the CD

### Installation Steps

- Please install a PoE Ethernet cable according to the diagram
- The PoE Ethernet cable is not included. We recommend using a CAT-5E outdoor graded STP Ethernet cable

## DE Deutsch

### Wichtige Informationen

- Die voreingestellte IP lautet **192.168.1.1**
- Der voreingestellte Benutzername lautet **admin**
- Das voreingestellte Passwort lautet **airlive**
- Die voreingestellte Betriebsart ist **Client mode**
- In der Grundeinstellung ist die ClearSignal Technologie ausgeschaltet. Sollten in Ihrer Umgebung hohe Interferenzen auftreten, aktivieren Sie es bitte im Menü "WLAN Einstellungen".
- Für mehr Informationen sehen Sie bitte im Benutzerhandbuch auf der CD nach.

### Installationsschritte

- Bitte nutzen Sie ein PoE Kabel wie Sie es in der Abbildung ersehen können
- Das PoE Kabel wird nicht mitgeliefert. Wir empfehlen die Nutzung eines CAT-5E STP Ethernet-Kabels für den Außenbereich

## HR Hrvatska

### Βασικές Πληροφορίες

- Početna IP adresa je **192.168.1.1**
- Početno korisničko ime je: **admin**
- Početna lozinka je: **airlive**
- Početni način rada je: **Client**
- Po početnim postavkama, ClearSignal tehnologija je onemogućena. Ukoliko u vašem okruženju ima puno interferencije, omogućite ClearSignal u izborniku "Wireless Settings"
- Za više informacija, molimo pogledajte vodič za korisnike na priloženom CD-u

### Βήματα Παραμετροποίησης

- Παρακαλούμε να εγκαταστήσετε ένα καλώδιο PoE σύμφωνα με το διάγραμμα
- Το καλώδιο PoE δεν περιλαμβάνεται στην συσκευασία. Προτείνουμε να χρησιμοποιήσετε ένα καλώδιο STP CAT-5E

## PL Polski

### Ważne informacje

- Standardowe ustawione IP : **192.168.1.1**
- Standardowa nazwa użytkownika : **admin**
- Standardowe hasło : **airlive**
- Ustawiony tryb pracy w nowym urządzeniu: **AP Client**
- Domyślnie funkcja ClearSignal Technology jest wyłączona, jeżeli pracujesz w środowisku o podwyższonym poziomie zakłóceń pasma, uaktywij tę funkcję w menu „Wireless Settings”.
- Więcej szczegółowych informacji znajdziesz na dołączonej płycie CD

### Procedura Instalacji

- Proszę zainstaluj kabel PoE Ethernet zgodnie z schematem
- Kabel PoE Ethernet nie jest dostarczony w komplecie. Zalecamy użyć kabla zewnętrznego STP CAT-5E

## RU Русский

### Важная информация

- IP адрес по умолчанию: **192.168.1.1**
- Имя пользователя по умолчанию: **admin**
- Пароль по умолчанию: **airlive**
- Операционный режим по умолчанию: **Клиент**
- Помехоустойчивая технология «Чистый сигнал» по умолчанию отключена. Если в вашем окружении много помех вещания, пожалуйста, включите ее в меню «беспроводные настройки».
- Для дополнительной информации, обратитесь к руководству пользователя доступно на компакт-диске.

### Подключение

- Пожалуйста подключите PoE Ethernet кабель согласно схеме
- PoE Ethernet кабель не входит в комплект поставки. Мы рекомендуем использовать экранированный Ethernet кабель CAT-5E для наружного использования

## CZ Český

### Důležité informace

- Tovární IP adresa je **192.168.1.1**
- Tovární jméno je: **admin**
- Tovární heslo je: **airlive**
- Tovární provozní mód je: **Client mode**
- Defaultně, ClearSignal technologie je vypnutá. Pokud je ve Vašem prostředí hodně rušení, prosím zapněte tuto technologii v "Wireless Settings" menu (bezdrátové nastavení).
- Pro více informací se prosím podívejte na manuál na přiloženém CD.

### Instalační kroky

- Prosím, nainstalujte PoE Ethernet kabel podle diagramu
- PoE Ethernet kabel není přiložen. Doporučujeme použití kabelu CAT-5E (STP Ethernet kabel).

## ES Español

### Información Importante

- Dirección IP por default es **192.168.1.1**
- Nombre de usuario por default es: **admin**
- Contraseña por default es: **airlive**
- Modo de operación por default es: **Client mode**
- Por default, la tecnología ClearSignal está inactiva. Si encuentra muchas interferencias, favor de activarla en el menú "Configuraciones inalámbricas".
- Para mayor información, favor de leer la guía de usuario en el CD

### Pasos para la Instalación

- Instale por favor un cable Ethernet PoE de acuerdo con el diagrama
- El cable Ethernet PoE no se incluye. Recomendamos usar un cable STP de categoría CAT-5E para exteriores

## HU Magyar

### Fontos információk

- The default IP address is **192.168.1.1**
- The default user name is: **admin**
- The default password is: **airlive**
- The default operation mode is: **Client mode**
- By default, the ClearSignal Technology is disabled. If your environment has a lot of interference, please enable it on the "Wireless Settings" menu.
- For more information, please read the user's guide on the CD

### Telepítési útmutató

- A PoE hálózati kábel az ábrán látható módon kösse be
- A csomagolás nem tartalmazza a PoE hálózati kábelt. Javasoljuk, hogy CAT-5E kültéri STP Ethernet kábelt használjon

## PT Português

### Informação importante

- O endereço IP padrão é **192.168.1.1**
- O nome utilizador padrão é: **admin**
- A palavra-chave padrão é: **airlive**
- O modo operação padrão é: **Modo Cliente**
- Por defeito, a Tecnologia ClearSignal está desactivada. Se no seu ambiente existir muita interferência, active-o por favor no menu "Wireless Settings".
- Para mais informações, leia por favor o guia de utilizador no CD

### Passos de Instalação

- Instale por favor um cabo Ethernet PoE de acordo com o diagrama
- O cabo Ethernet PoE não está incluído. Recomendamos a utilização de um cabo Ethernet STP CAT-5E classificado de exterior.

## SK Slovensky

### Dôležité informácie

- Predvolená IP adresa je **192.168.1.1**
- Predvolené používateľské meno je: **admin**
- Predvolené heslo je: **airlive**
- Predvolený pracovný režim je: **Client**
- Podľa predvolených nastavení je technológia ClearSignal vypnutá. Ak má vaše bezdrôtové prostredie veľa rušenia, zapnite ju v menu „Wireless Settings”.
- Viac informácií nájdete v manuáli na priloženom CD.

### Pokyny na inštaláciu

- PoE sieťový kábel nainštalujte podľa diagramu
- PoE sieťový kábel nie je súčasťou balenia. Doporučujeme použitie sieťového káblu triedy CAT-5E určeného na vonkajšie použitie