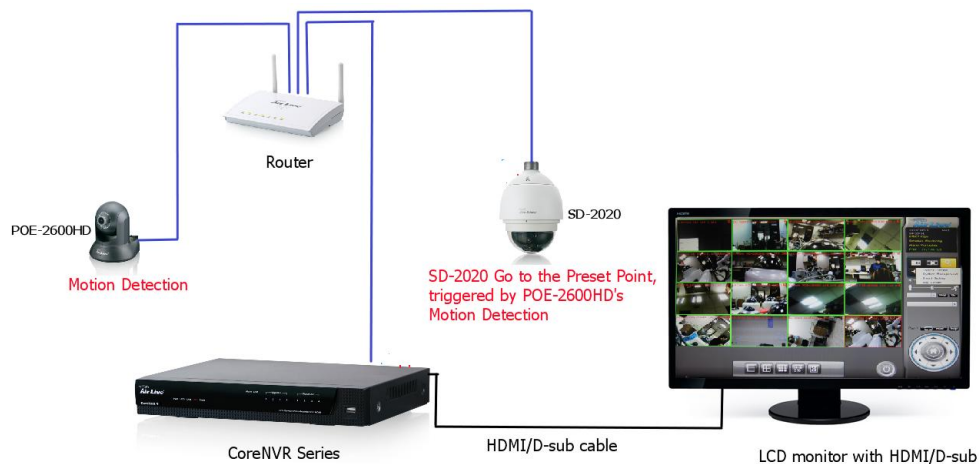


## How to trigger SD-2020 to 3 different Preset Point/AutoPan Automatically When 3 different Motion Detected by another IPCamera in CoreNVR Series?

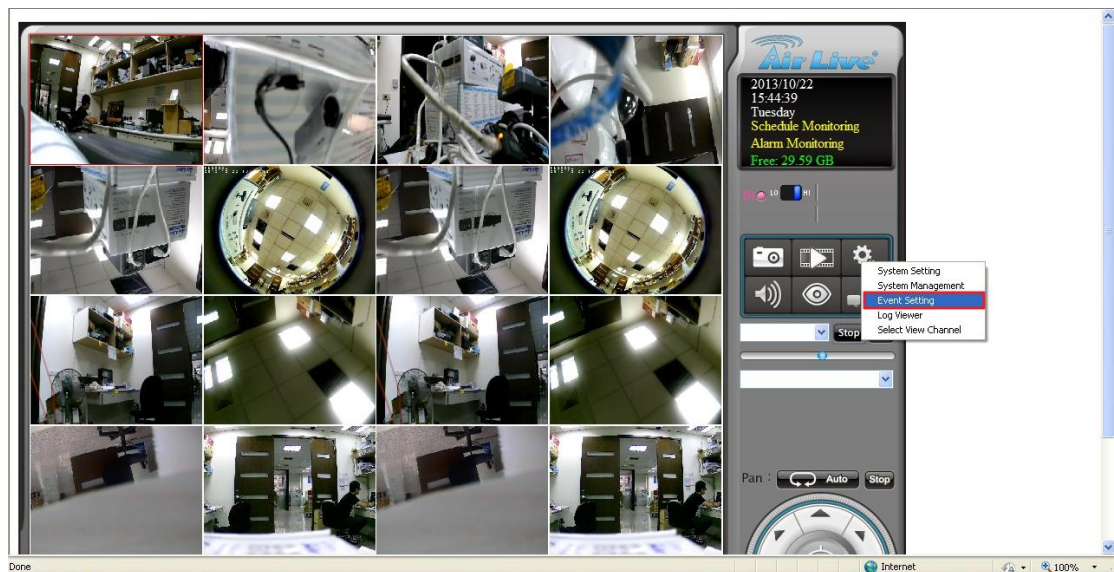
This example shows that when WN-2600HD (as for example) detected the motion in pre-defined area, then SD-2020 will receive the signal from CoreNVR Series and turn the camera to preset point.

Example of Topology:



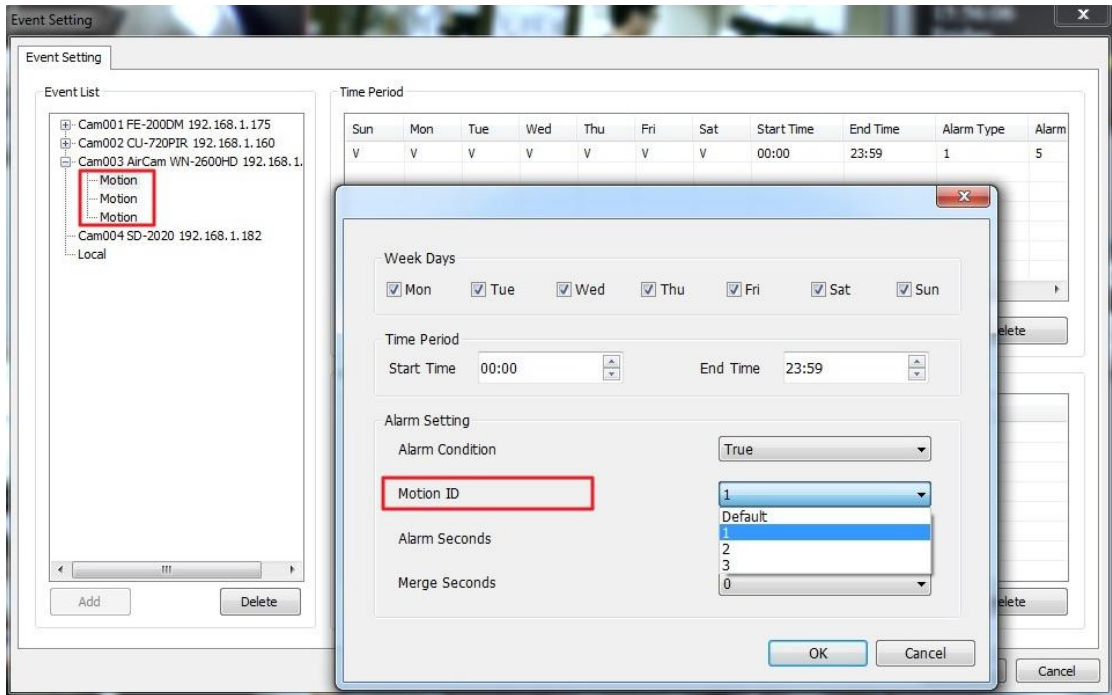
### Steps for trigger SD-2020 to Preset Point:

1. Setup the Motion Detection of WN-2600HD.
2. Go "Event Setting" in CoreNVR series.

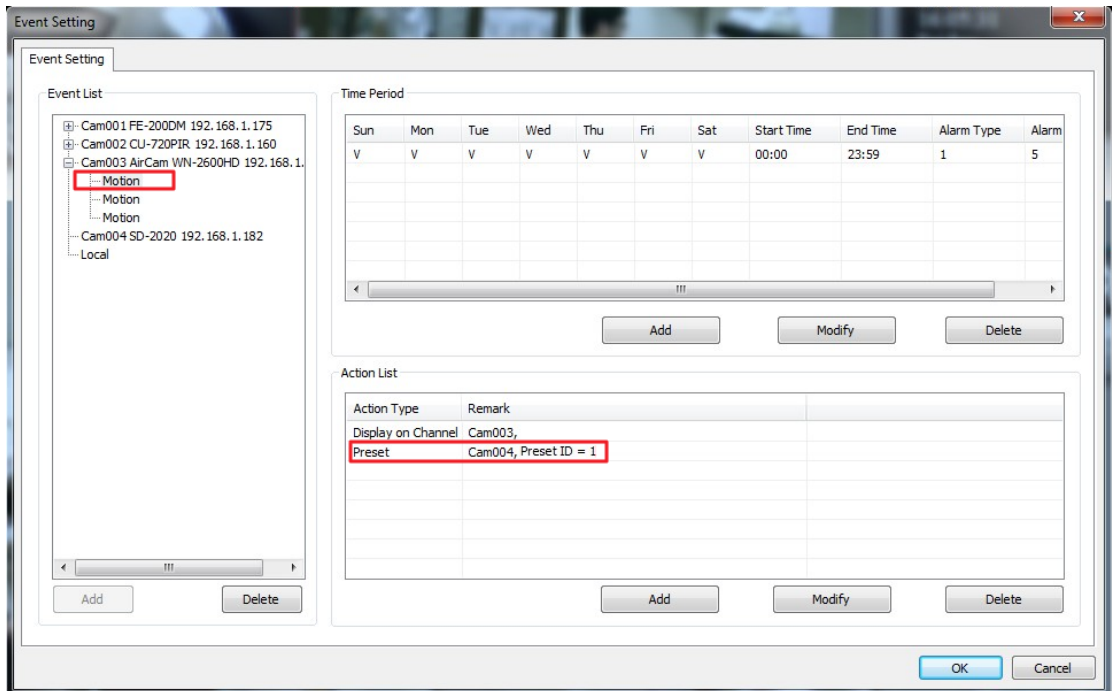


3. Add "Motion Alarm" x3 into WN-2600HD Event List, and select the 3 different

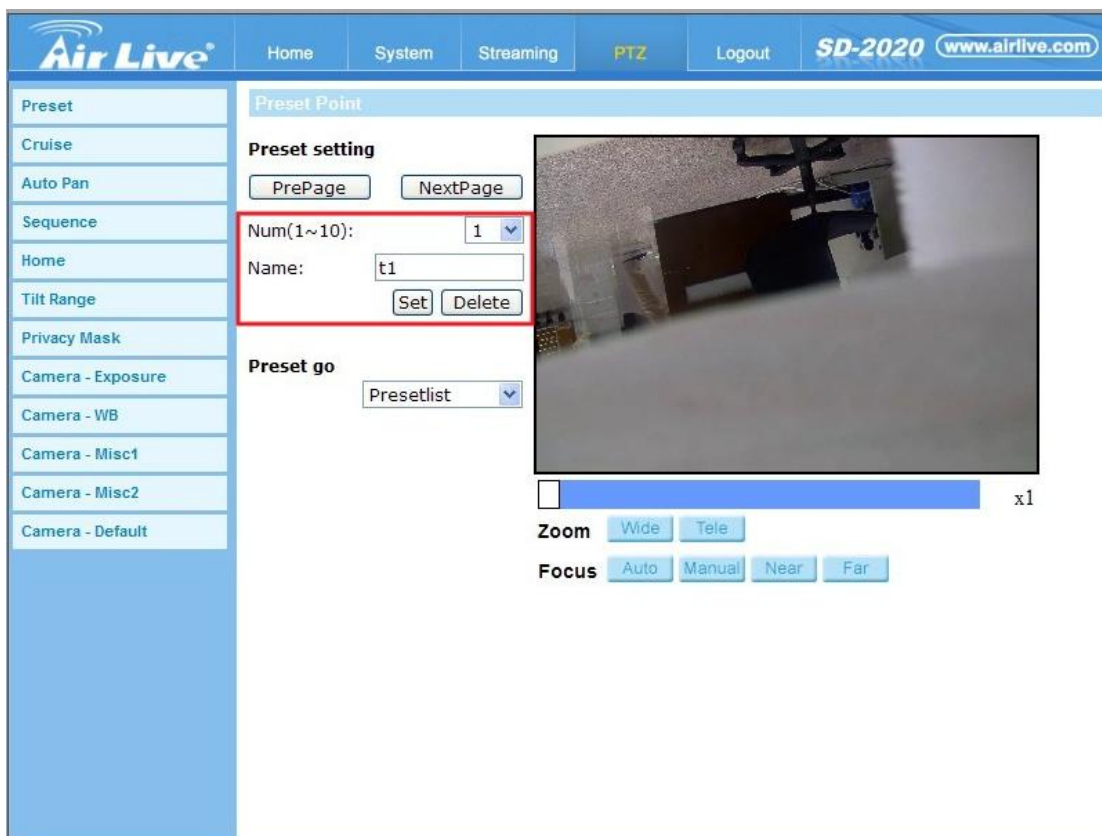
Motion ID in 3 different Motion Event list.



- In the WN-2600HD Action List, please select the different SD-2020's Preset point in each Motion list as picture below, it means when there is a motion detected in Area1 by WN-2600HD, CoreNVR Series will send the signal to let SD-2020 go to the Preset point ID1, when motion is detect in Area2 by WN-2600HD, SD-2020 will go to the Preset point ID2.

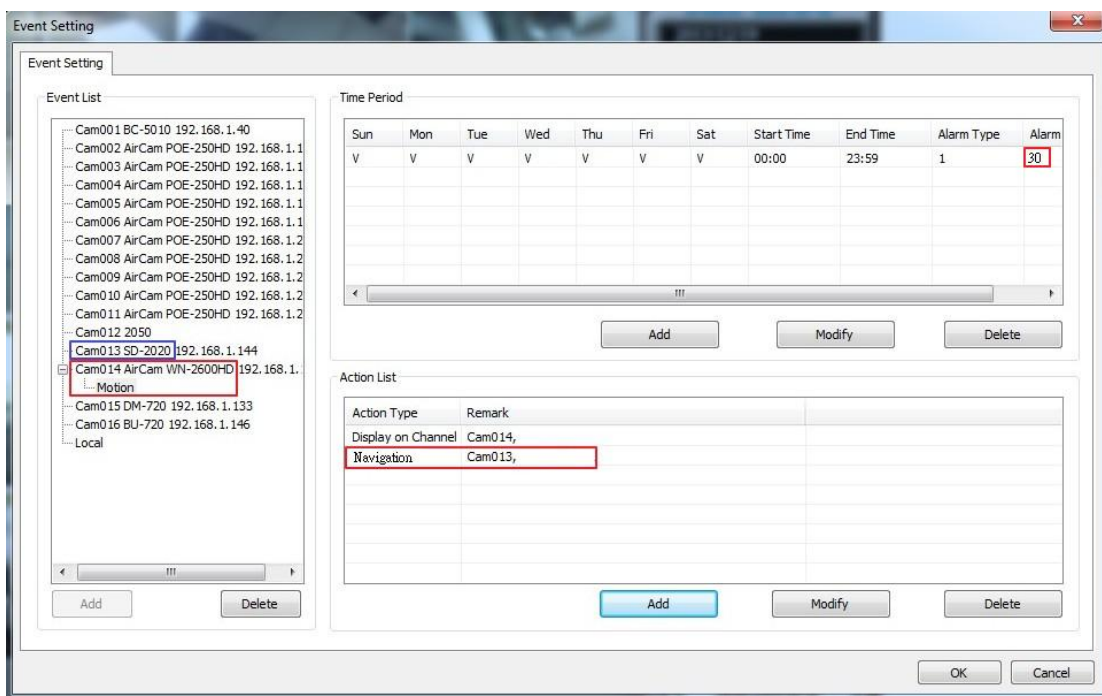


- Set the preset point on SD-2020 web UI.



**Steps for trigger SD-2020 to AutoPan(Navigation):**

7. Set the WN-2600HD's alarm time as 30 seconds to let the motion alarm longer enough to keep SD-2020's AutoPan(Navigation) in this 30 seconds.



8. When everything was set properly, then you will see SD-2020 turn to Preset Point/AutoPan(Navigation) automatically when there is motion detected by another IP camera.