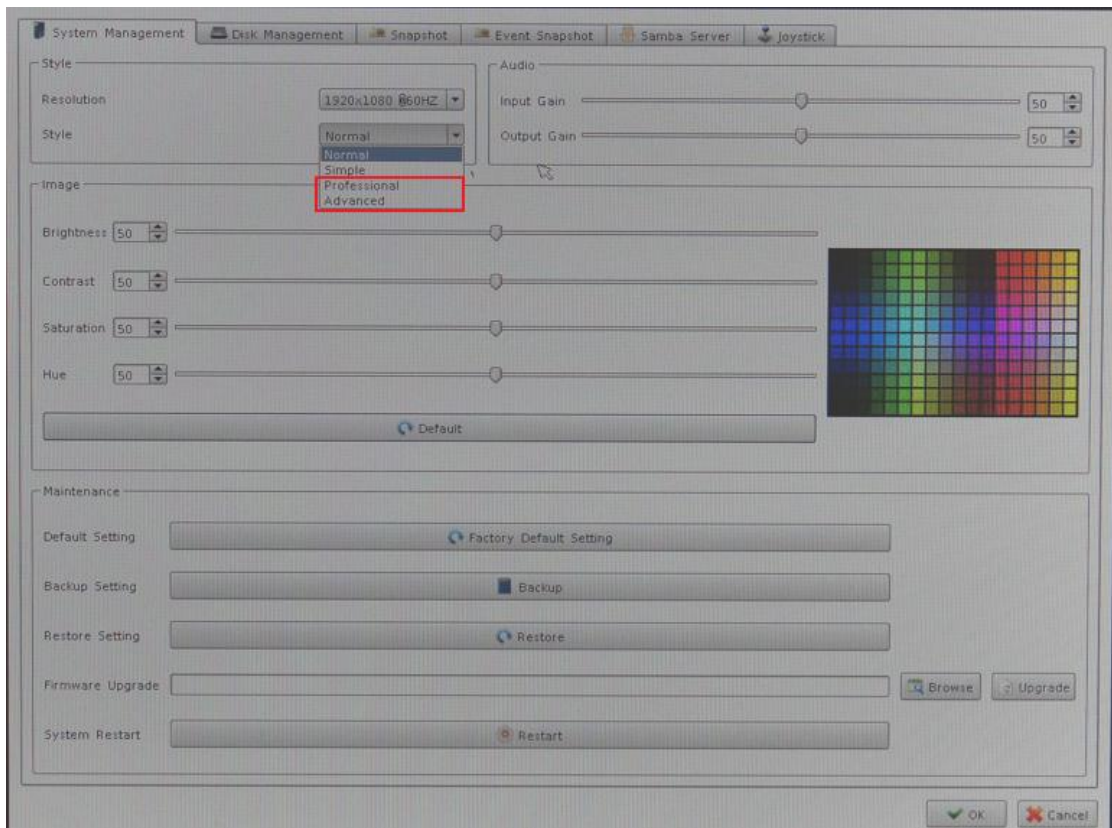


CoreNVR 9/16 New Function - E-map

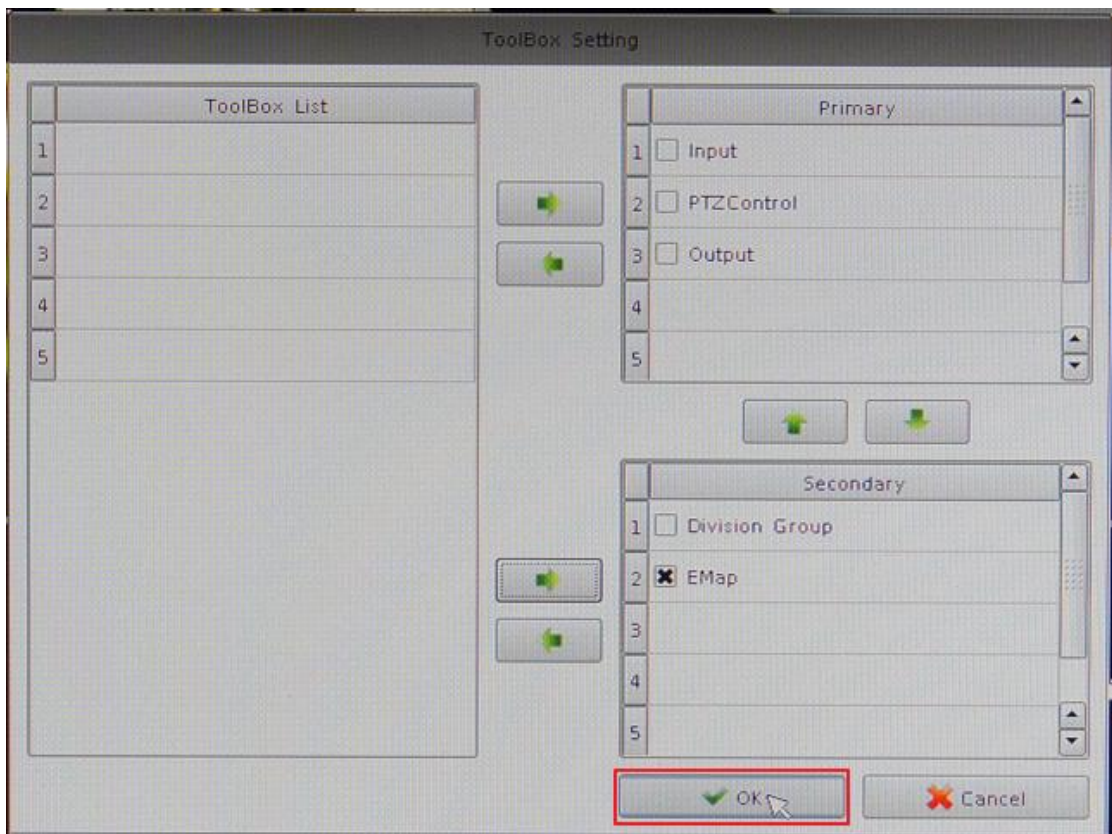
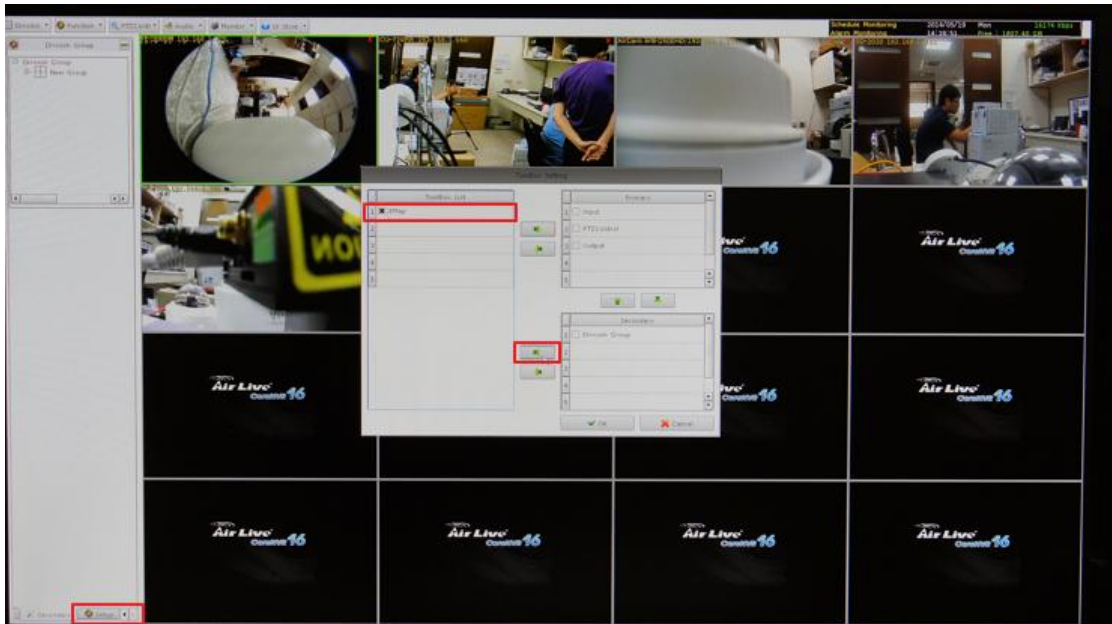
1. Go "System Management" in CoreNVR 9/16.



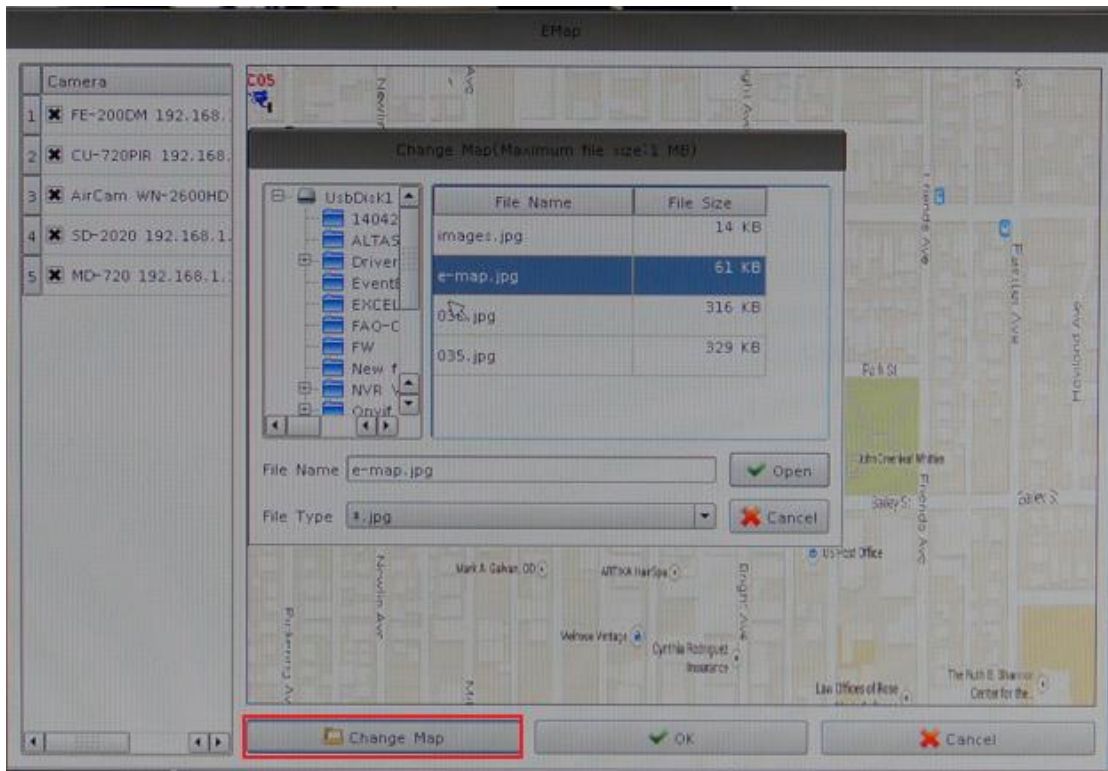
2. Select "Professional" or "Advanced" in "Style".



3. Get into the "Setting", that is in the Main Console's left corner, Switch the "E-Map" from the "Toolbox list" to "Secondary", then press ok.



4. After that you can find the E-map in **"Secondary"**, and you can also change the map that is **".jpg"** or **".png"** format in your USB stick.



5. It is allowed to drag the Camera in the E-map.

