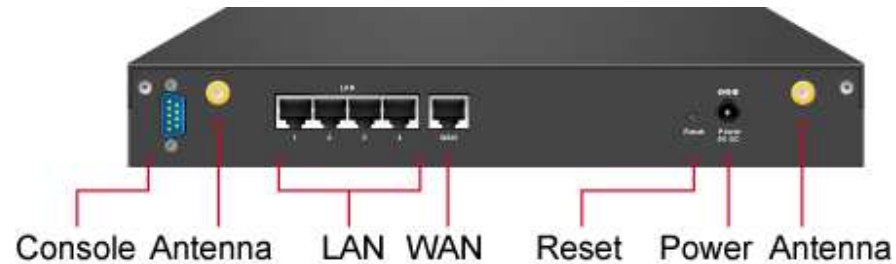


# How to reset to factory default through console interface?

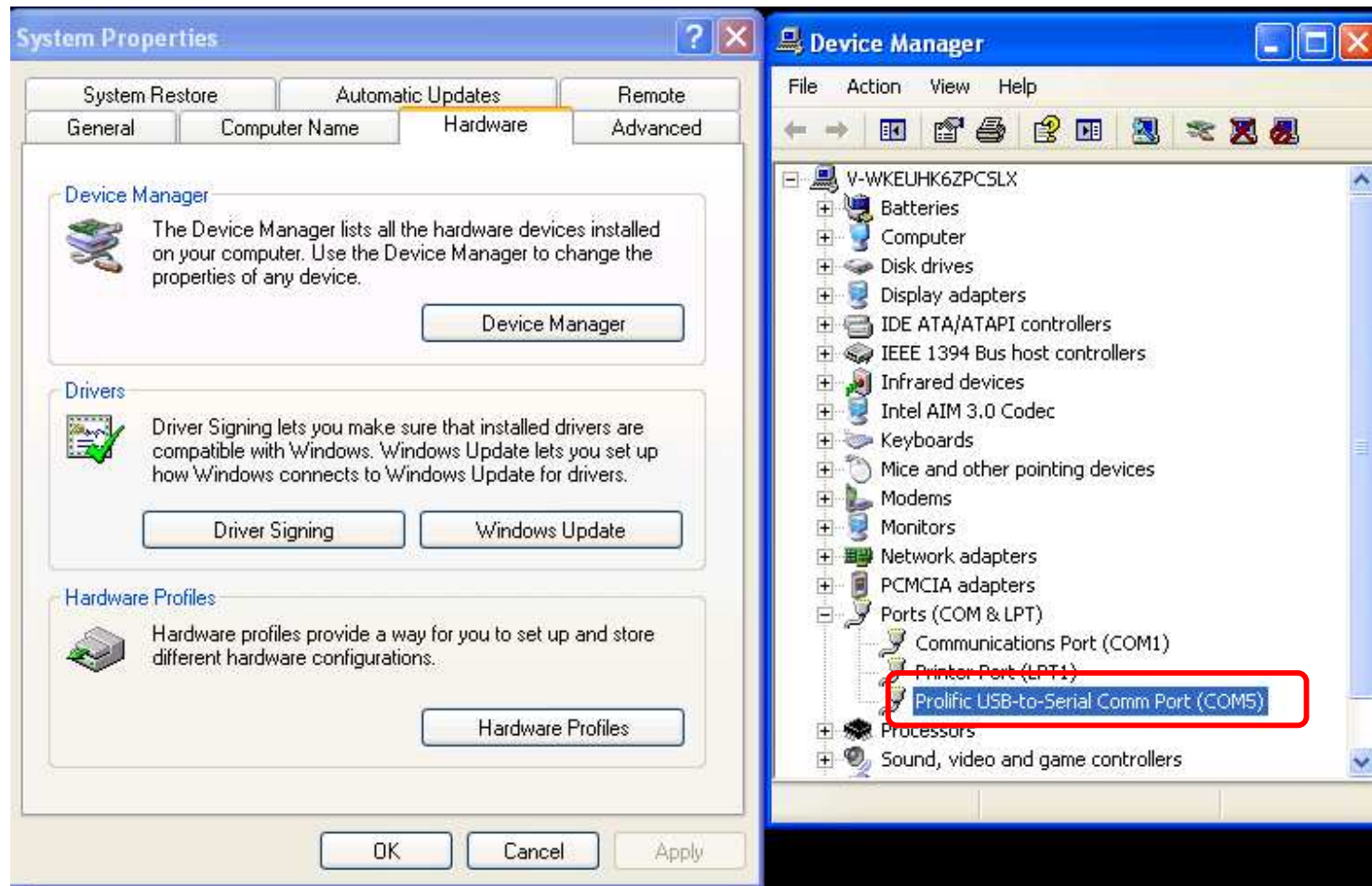
WIAS-1200G provides function to reset password or default setting via "**Console Port**", the following steps to guide you the process.

WIAS-1200G console port is 9-pin serial port, and there is a console cable including in the packing.



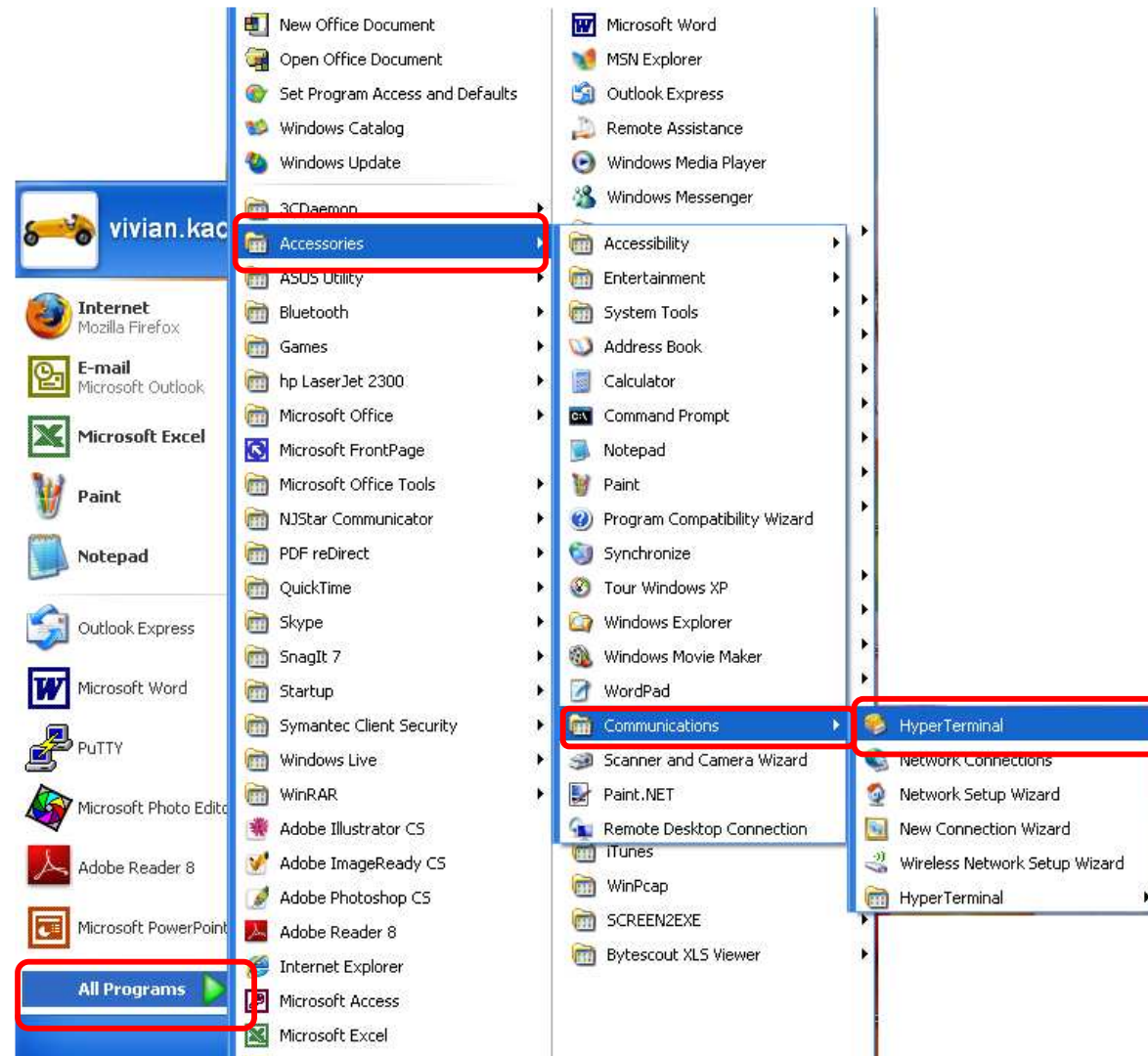
- Before to run **Windows Hyper terminal** program, you should connect WIAS-1200G and your PC with cable.
  - Just plug the console cable to WIAS-1200G and your PC serial port, then to follow the steps to configure Hyper Terminal and enter WIAS-1200G to access the command via console port.
  - Via this port to enter the console interface for the administrator to handle the problems and situations occurred during operation.
- i. Use the console cable (included in your original package) to connect the Gateway to the PC (at the right COM port); you will need console cable and a desk top with "**COM**" port to get started.
  - ii. Please make sure the **COM** port is configured to map to the right physical connector that will be used through Windows **Device Manager > Ports** and select **Prolific USB-to-Serial Comm Port**, in this example, it is COM5.

## How to reset to factory default through console interface?



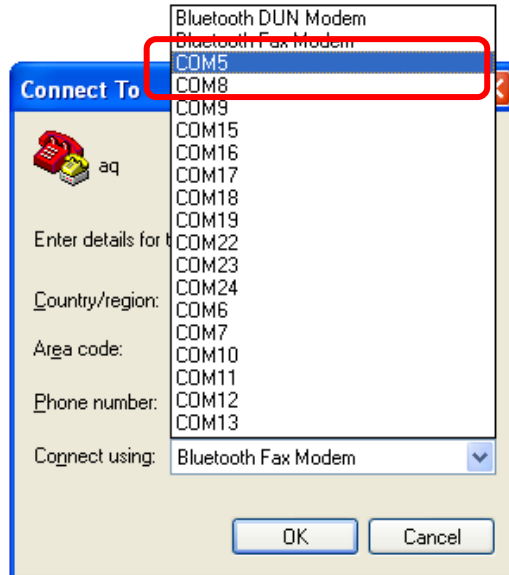
- iii. Open a **HyperTerminal** or **Putty**.

# How to reset to factory default through console interface?



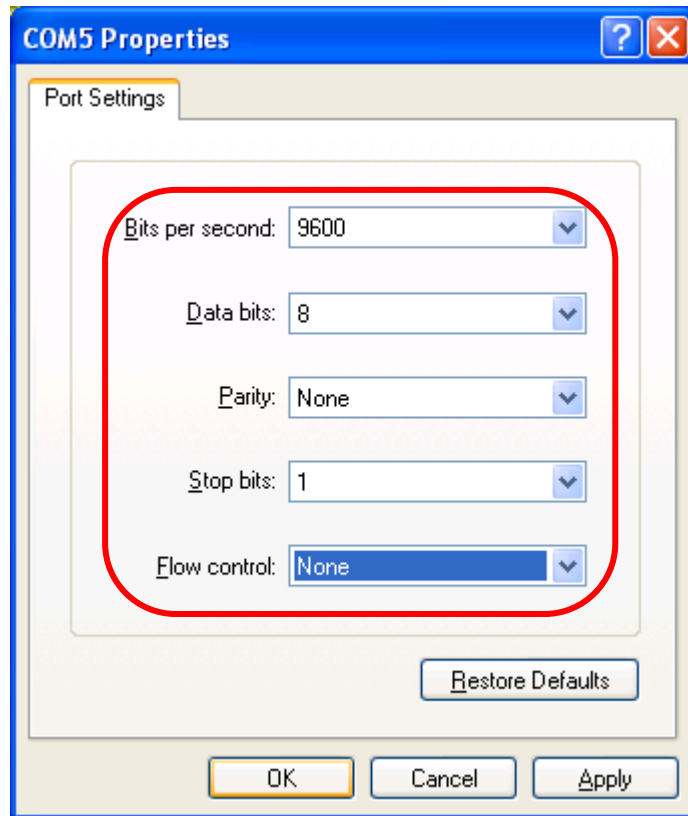
## How to deploy console cable to connect WIAS-1200G and PC, to reset setting or check status via console

- iv. Select the correct COM port. (Please refer to # 1 for how to know your COM port number)



- v. Enter the following COM port settings:
- vi. In order to connect to the console port of AirLive WIAS-1200G, a console, modem cable and a terminal simulation program, such as the Hyper Terminal are needed.
- vii. If a Hyper Terminal is used, please set the parameters as **9600, 8, n, 1**.

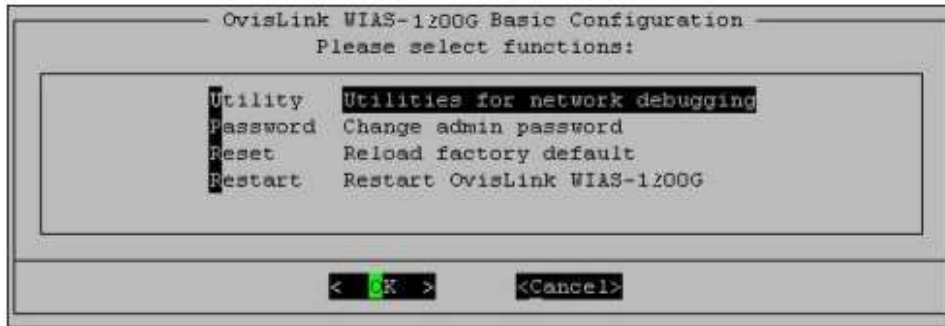
## How to deploy console cable to connect WIAS-1200G and PC, to reset setting or check status via console



<b>※Note</b>	The main console is a menu-driven test interface with dialog boxes. Please use arrow keys on the keyboard to browse the menu and press the Enter key to make selection or confirm what you enter.
--------------	---

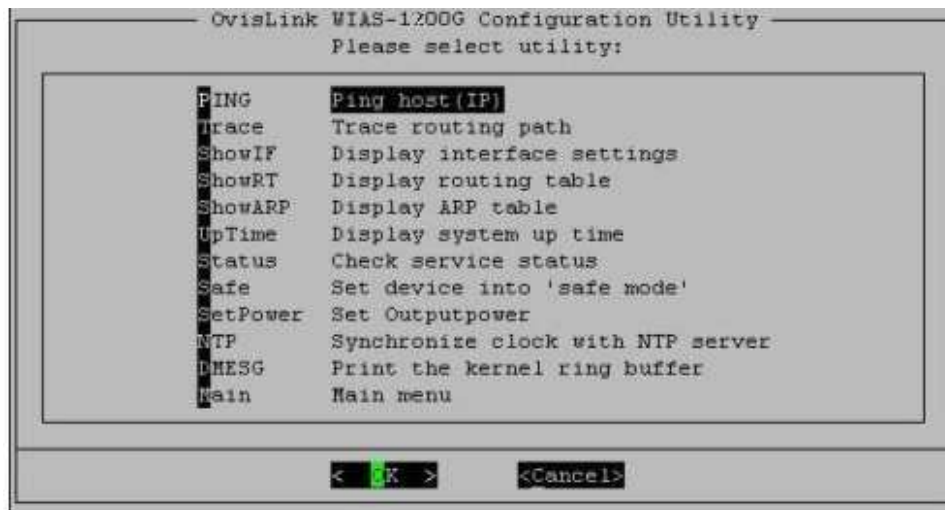
1. Once the console port of AirLive WIAS-1200G is connected properly, the console main screen will appear automatically. If the screen does not appear in the terminal simulation program automatically, please try to press the arrow keys, so that the terminal simulation program will send some messages to the system and the welcome screen or the main menu should appear. If you are still unable to see the welcome screen or the main menu of the console, please check the connection of the cables and the settings of the terminal simulation program.

# How to deploy console cable to connect WIAS-1200G and PC, to reset setting or check status via console



- **Utilities for network debugging**

The console interface provides several utilities to assist the Administrator to check the system conditions and to debug any problems. The utilities are described as follow:



- Ping host (IP): By sending ICMP echo request to a specified host and wait for the response to test the network status.
- Trace routing path: Trace and inquire the routing path to a specific target.
- Display interface settings: It displays the information of each network interface setting including the MAC address, IP address, and netmask.
- Display the routing table: The internal routing table of the system is displayed, which may help to confirm the Static Route settings.

## **How to deploy console cable to connect WIAS-1200G and PC, to reset setting or check status via console**

- Display ARP table: The internal ARP table of the system is displayed.
- Display system up time: The system live time (time for system being turn on) is displayed.
- Check service status: Check and display the status of the system.
- Set device into "safe mode": If administrator is unable to use Web Management Interface via the browser for the system failed inexplicitly. Administrator can choose this utility and set IT into safe mode, then administrator can management this device with browser again.
- Synchronize clock with NTP server: Immediately synchronize the clock through the NTP protocol and the specified network time server. Since this interface does not support manual setup for its internal clock, therefore we must reset the internal clock through the NTP.
- Print the kernel ring buffer: It is used to examine or control the kernel ring buffer. The program helps users to print out their boot-up messages instead of copying the messages by hand.
- Main menu: Go back to the main menu.

# How to deploy console cable to connect WIAS-1200G and PC, to reset setting or check status via console

- **Change admin password**

Besides supporting the use of console management interface through the connection of null modem, the system also supports the SSH online connection for the setup. When using a null modem to connect to the system console, we do not need to enter administrator's password to enter the console management interface. But connecting the system by SSH, we have to enter the username and password.

The username is "admin" and the default password is "airlive", which is the same as for the web management interface. You can use this option to change the administrator's password. Even if you forgot the password and are unable to log in the management interface from the web or the remote end of the SSH, you can still use the null modem to connect the console management interface and set the administrator's password again.

<b>※Note</b>	Although it does not require a username and password for the connection via serial port, the same management interface can be accessed via SSH. Therefore, we recommend you to immediately change the AirLive WIAS-1200G Admin username and password after logging in the system for the first time.
--------------	--

- **Reload factory default**

Choosing this option will reset the system configuration to the factory defaults.

- **Restart AirLive WIAS-1200G**

Choosing this option will restart AirLive WIAS-1200G.