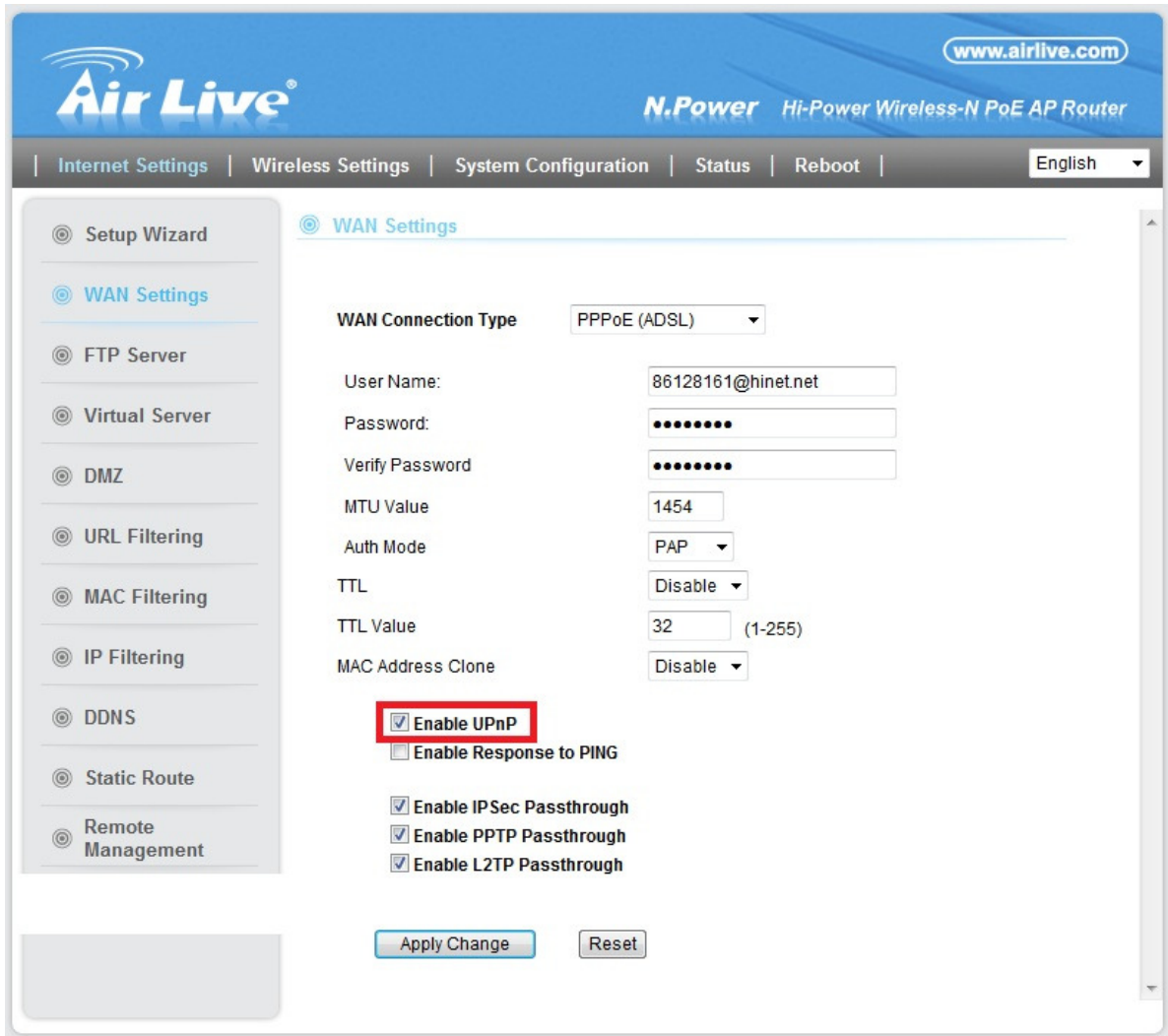


How to use DIPS function

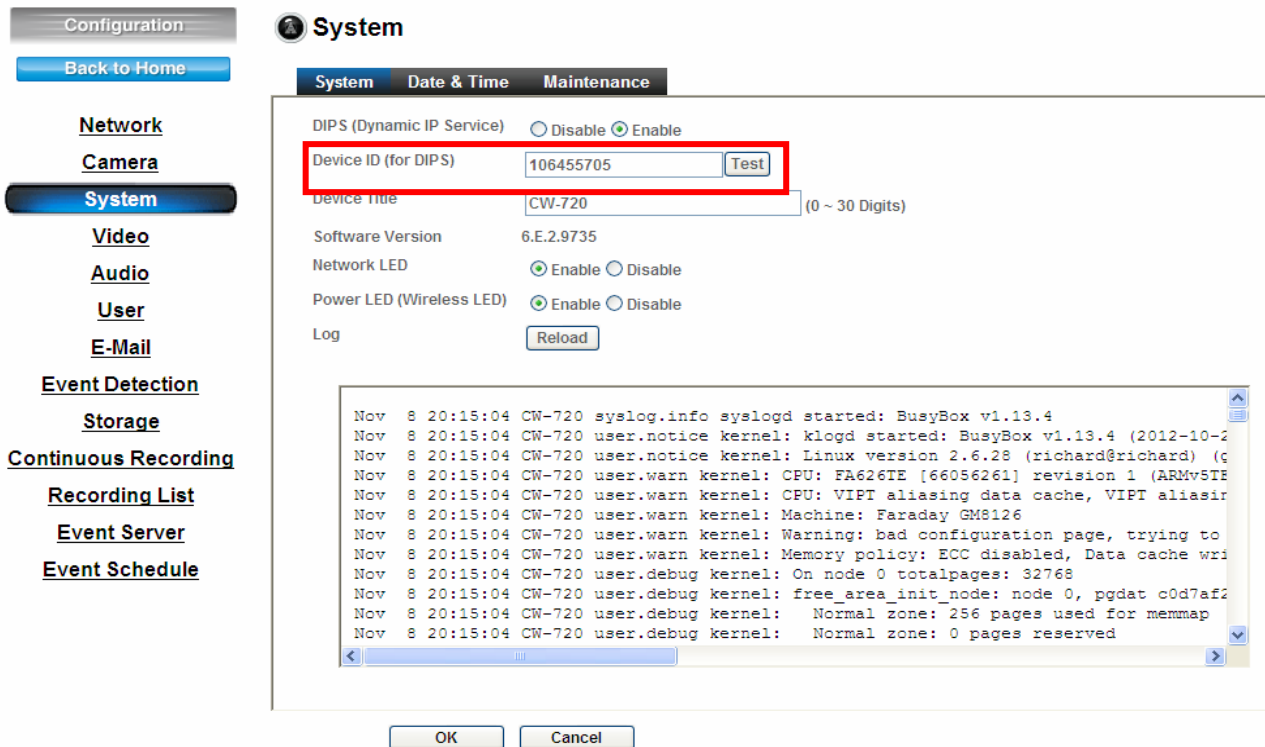
1. Please make sure that the router already enables the UPnP function, and it can connect to the internet.



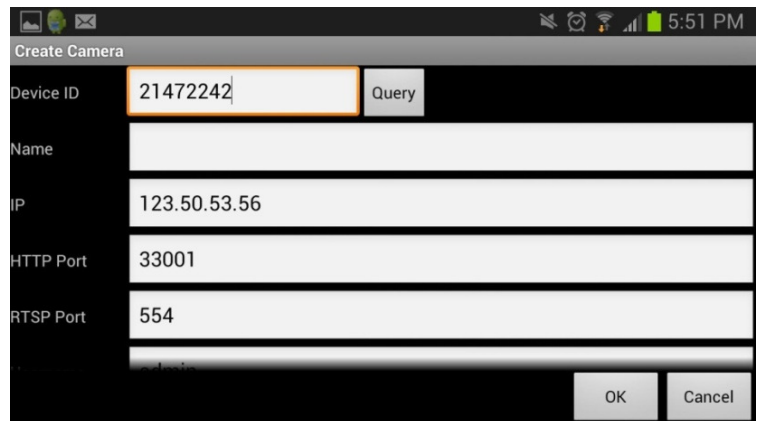
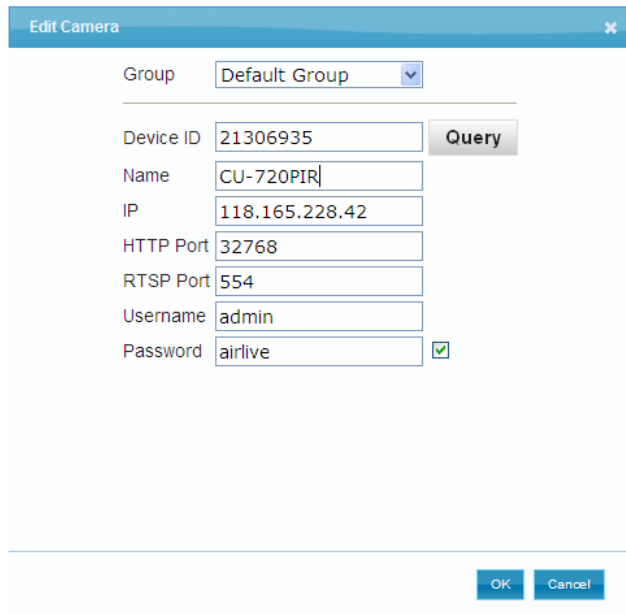
2. Connect camera to the router, then plug the power to the camera.



3. Log in to the camera, you will see the system page then check device ID (for DIPS)



4. You can use device ID on our P2P website and AirLive CamPro Mobile Home, just fill in the device ID and press “Query”, it will fill in the IP address and HTTP port automatically.



P2P website : <http://www.airliveview.com>

You can download and install AirLive CamPro Mobile Home in the **APP Store** or **Google Play**.