

How to create App for Dropbox

1 Enable Dropbox then click 'Create App' button.

FTP Server
 Enable

Mail Server
 Enable SMTP

Samba Server
 Enable

TCP Server
 Enable

HTTP Server
 Enable

Dropbox
 Enable **Create App**
App Key :
App Secret : Get AuthString
Authorization String : Apply
Access Token : Get Infomation

Apply Cancel

2 It will pop up "Dropbox Sign in page, please input ID and password then click "Sign in" button.

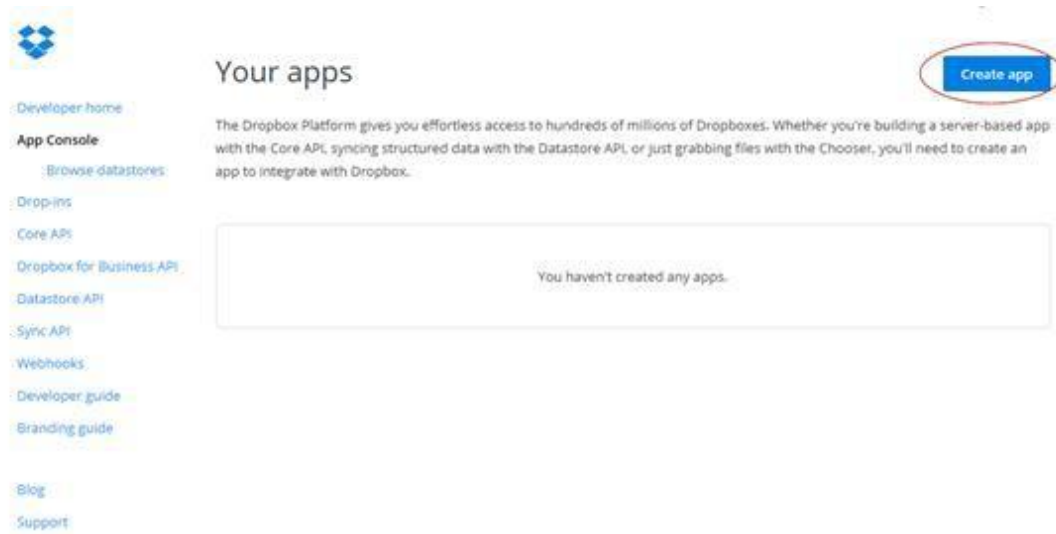


Sign in [or create an account](#)

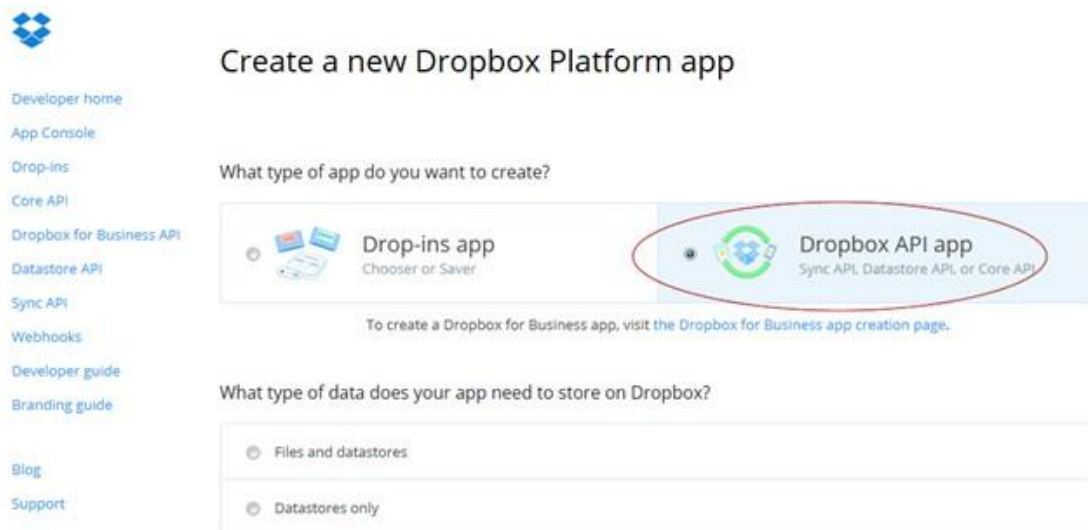
Remember me

[Forgot your password?](#)

3 Click 'Create app' button in "Your apps" page.



4 Select 'Dropbox API app' item in "Create a new Dropbox Platform app" page



5 Select “**Files and datastores**” for ‘What type of data does your app need to store on Dropbox?’

Choose “**No**” for “Can your app be limited to its own folder?”

Choose “**All file types**” for “What type of files does your app need access to?”

What type of data does your app need to store on Dropbox?

Files and datastores

Datastores only

Can your app be limited to its own folder?

Yes — My app only needs access to files it creates.

No — My app needs access to files already on Dropbox.

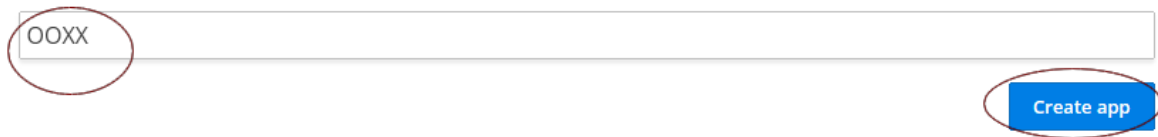
What type of files does your app need access to?

Specific file types — My app only needs access to certain file types, like text or photos.

All file types — My app needs access to a user's full Dropbox. Only supported via the [Core API](#).

6 Input the app name then click “Create app” button.

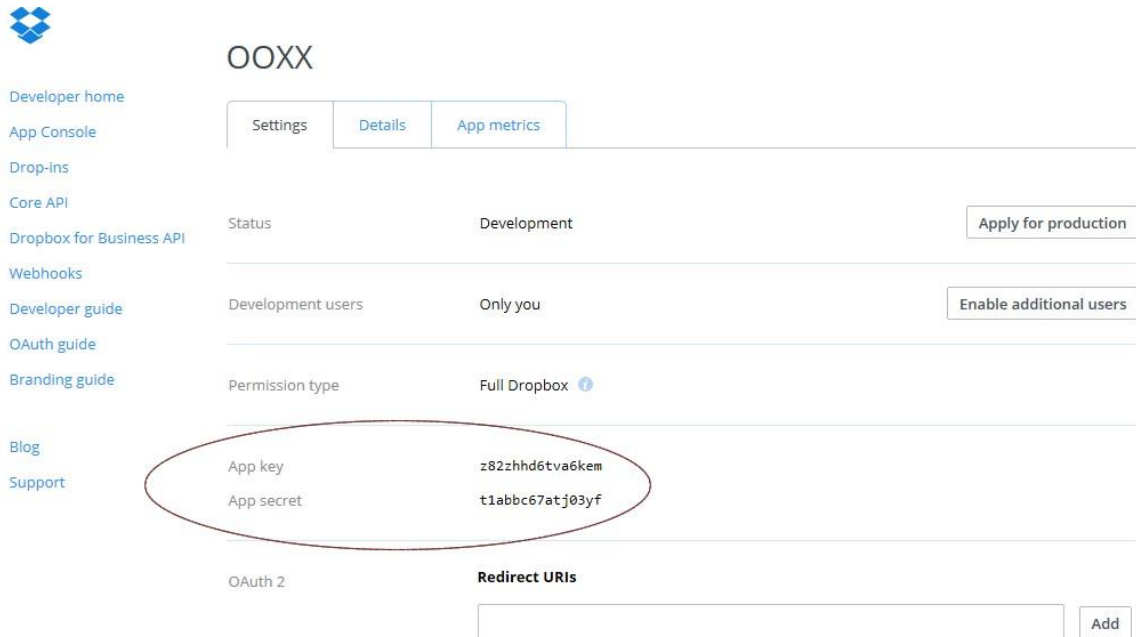
Provide an app name, and you're on your way.



OOXX

Create app

7 Copy “App key” and “APP secret” from App page.



OOXX

Settings Details App metrics

Status Development Apply for production

Development users Only you Enable additional users

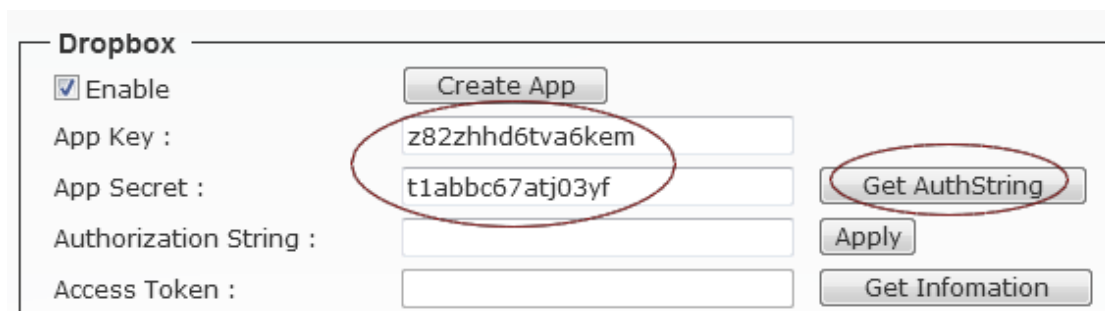
Permission type Full Dropbox ⓘ

App key z82zhhd6tva6kem

App secret t1abbc67atj03yf

OAuth 2 Redirect URIs Add

8 Paste the “App key” and “APP Secret” to SmartCube-300W Dropbox settings, then click ‘Get AuthString’ button.



Dropbox

Enable Create App

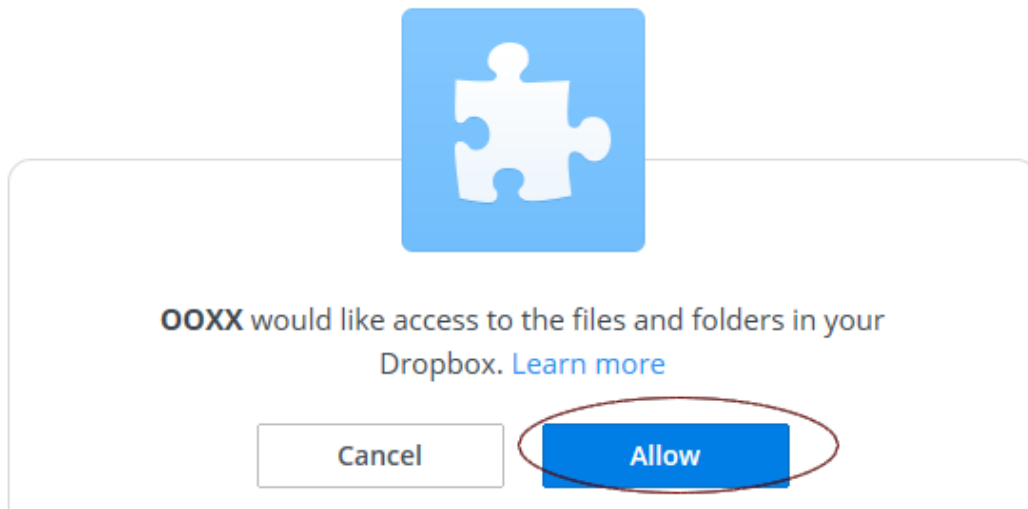
App Key : z82zhhd6tva6kem

App Secret : t1abbc67atj03yf Get AuthString

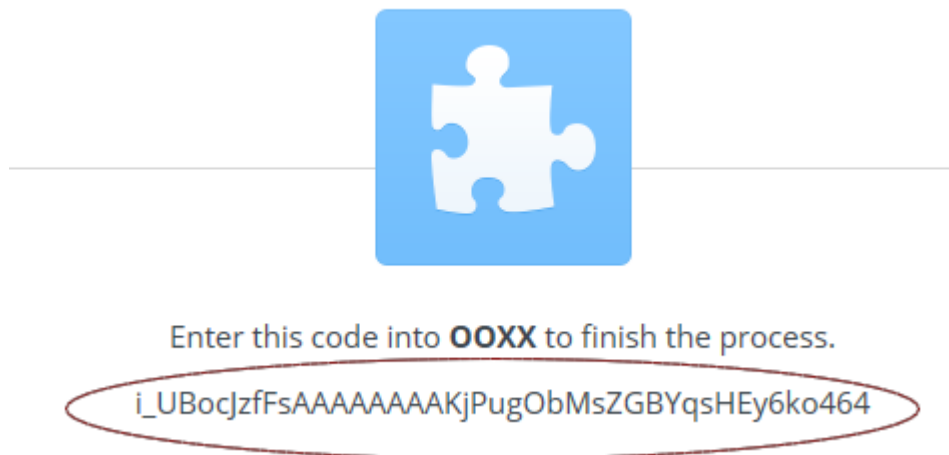
Authorization String : Apply

Access Token : Get Information

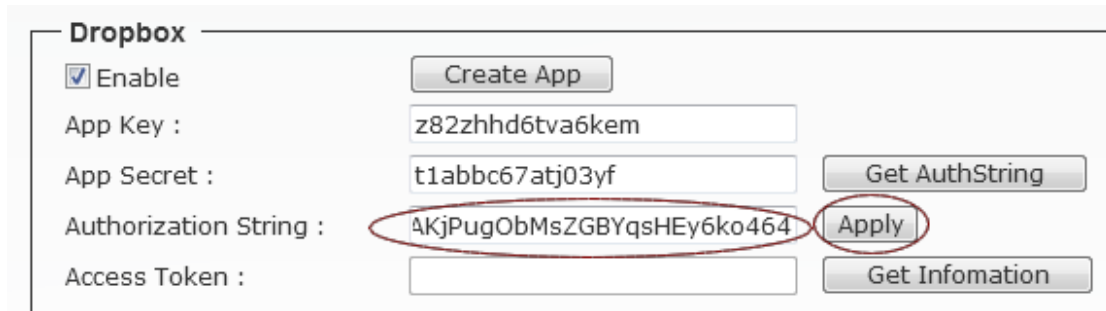
9 Click **“Allow”** button for “access to the files and folders in your Dropbox.”.



10 Copy the **code**



11 Paste the **code** to SmartCube-300W **Authorization String**, then click



“Apply” button

12 Wait for a moment, it will create “**Access Token**” key automatically.

Dropbox

Enable Create App

App Key :

App Secret : Get AuthString

Authorization String : Apply

Access Token : Get Infomation

13 Click “**Get Information**” button will pop up “Account, Country, Email” information. Then click “Apply” button to finish Dropbox settings.

TCP Server

Enable

HTTP Server

Enable

Dropbox

Enable Create App

App Key :

App Secret : Get AuthString

Authorization String : Apply

Access Token : Get Infomation

Apply Cancel

Message from webpage

Display Name : Monica Huang
Country : TW
Email : shupen.monica@gmail.com

OK