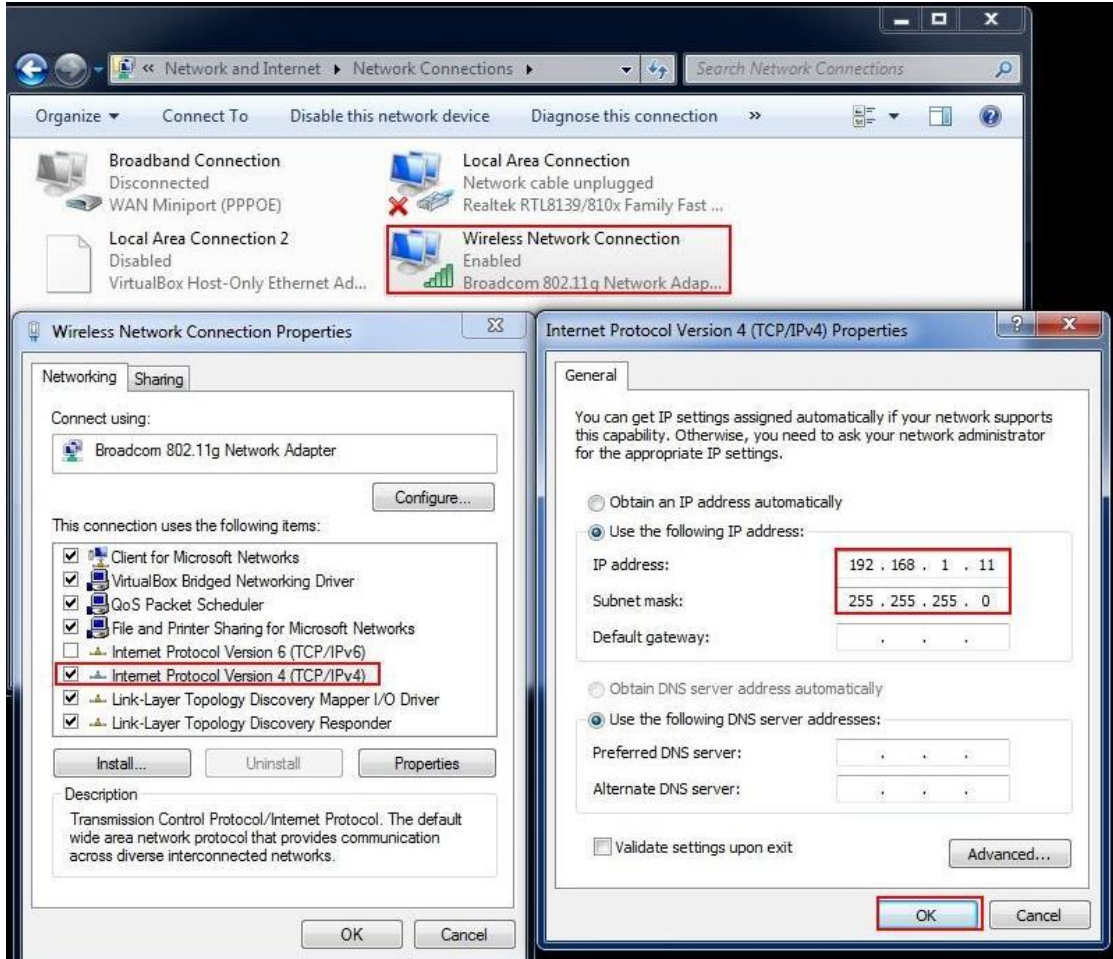
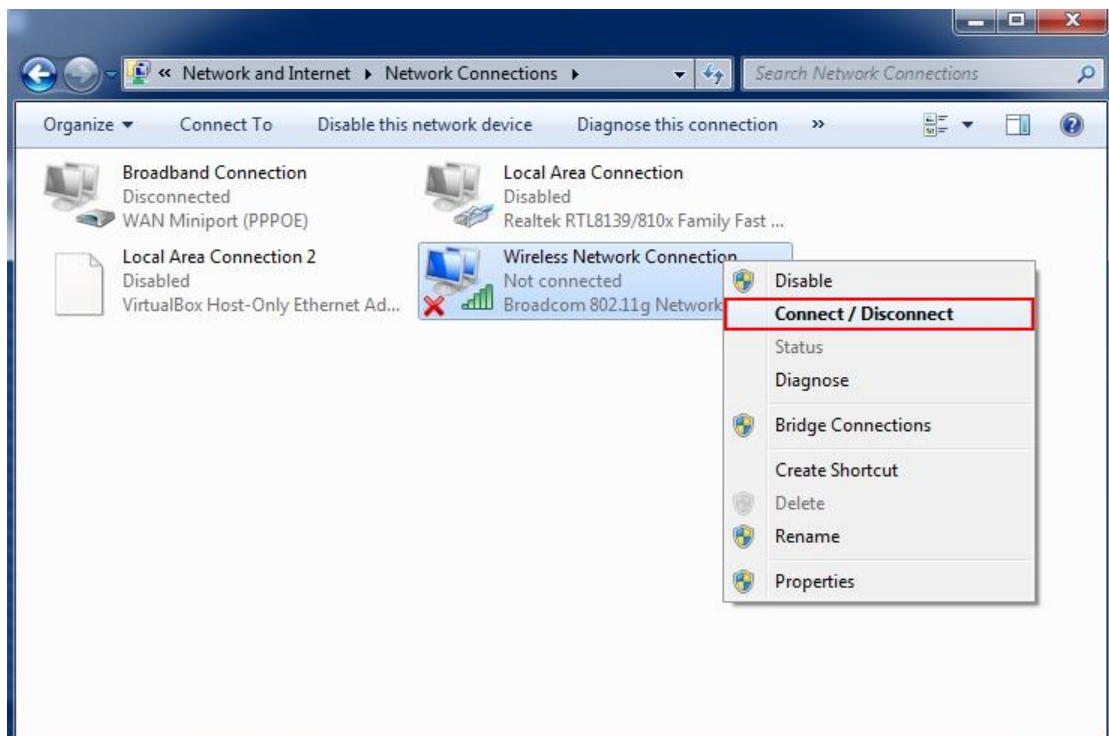


## How to set up the AP at first time by WPS Pin code on Win7.

1. Set your Wireless network card IP address as 192.168.1.xx, submask as 255.255.255.0.



2. Select Connect/ Disconnect.



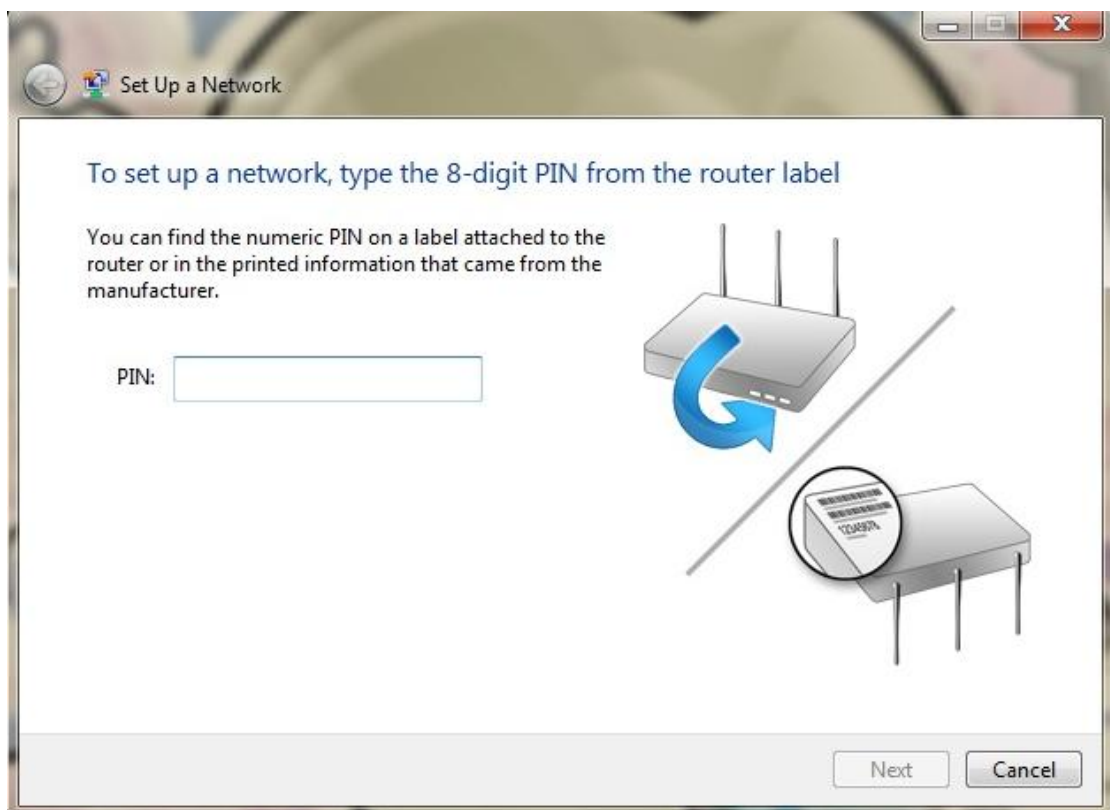
3. Select Airlive, and then connect.



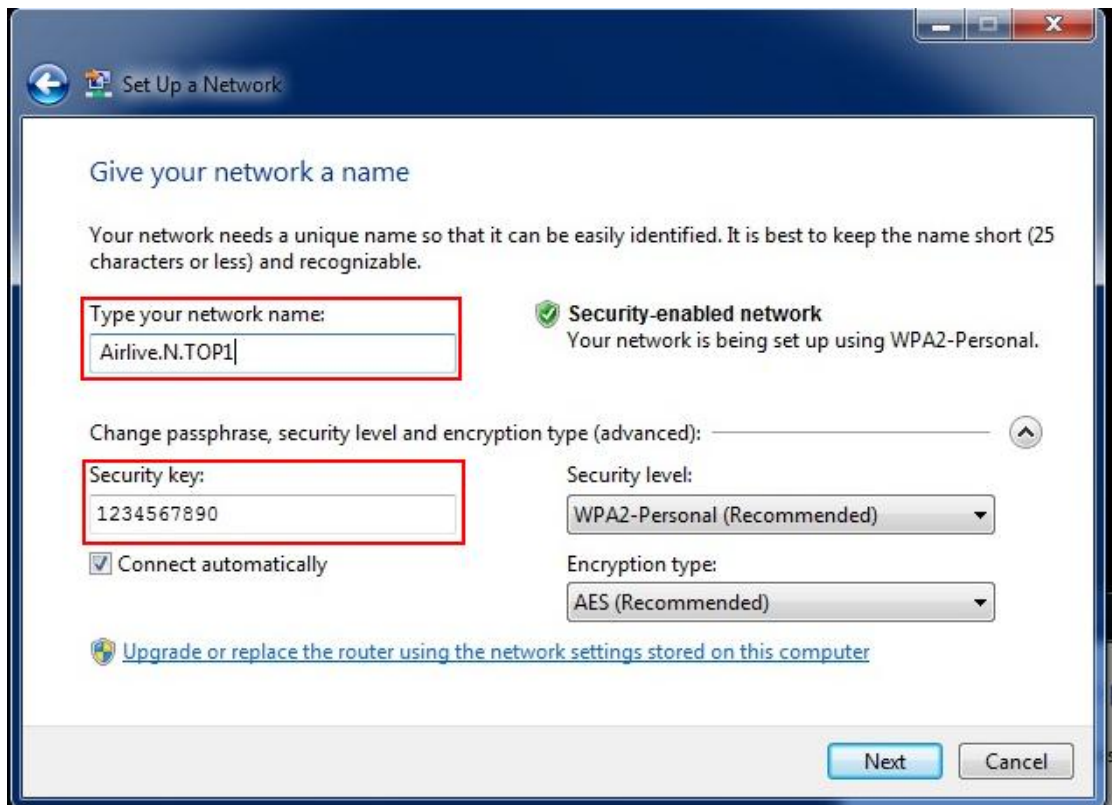
4. Do you want to set up your network? Ok.



5. Enter Your Pin code at the bottom of your AP.



6. Enter Your Own SSID & Security key.



7. Finished, Your AP had been set successfully.

