

Q: How to do continuous patrol with NVR?

Please refer to the below information:

1. Enter NVR web UI
2. Please choose “NVR Setup” -> “PTZ Preset”

NVR4 Network Video Recorder
System Time: February 24, 2010 16:46:27
User: admin

PTZ Preset

Channel: 1.POE-260CAM

Set as Home	Move Here When Event Trigger	Position No	Position Name	Description
<input type="radio"/>	<input type="radio"/>	1	Pre-Set-01	
<input type="radio"/>	<input type="radio"/>	2	Pre-Set-02	
<input type="radio"/>	<input type="radio"/>	3	Pre-Set-03	

Buttons: Add, Edit, Remove, Sync with Camera

Position No: 4
Position Name: Pre-Set-04

PTZ Speed: [Dropdown]
Zoom: Zoom In, Zoom Out
Focus: Near, Auto, Far
Description: [Text Area]

Apply

If you have already set up pre-position on IP camera, you can click “Sync with Camera” or follow the below steps to add preset positions.

- a. To set up PTZ preset points, select a camera from the “Camera” drop-down menu and click “Add”.

PTZ Preset

Channel: 1.POE-260CAM

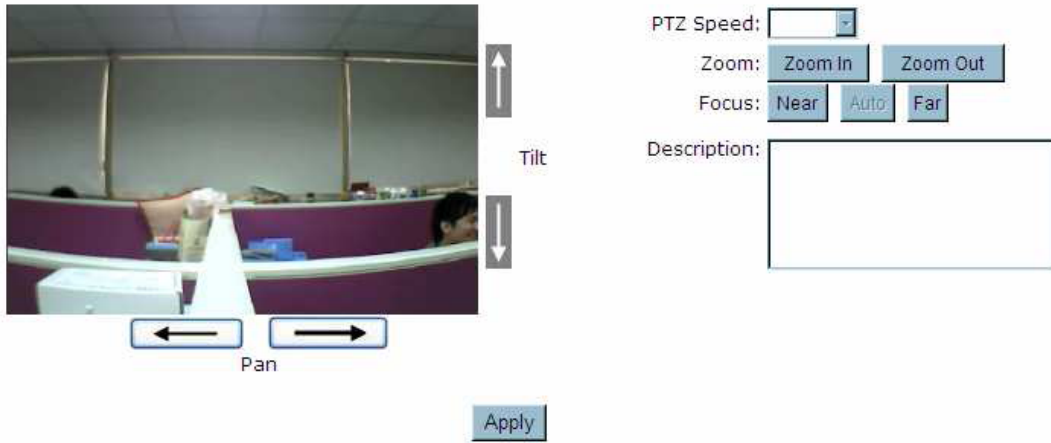
Set as Home	Move Here When Event Trigger	Position No	Position Name	Description
-------------	------------------------------	-------------	---------------	-------------

Buttons: Add, Edit, Remove, Sync with Camera

- b. Select a position number for the preset point from the “Position Number” drop-down menu and fill in a name in the “Position Name” field for easier identification.

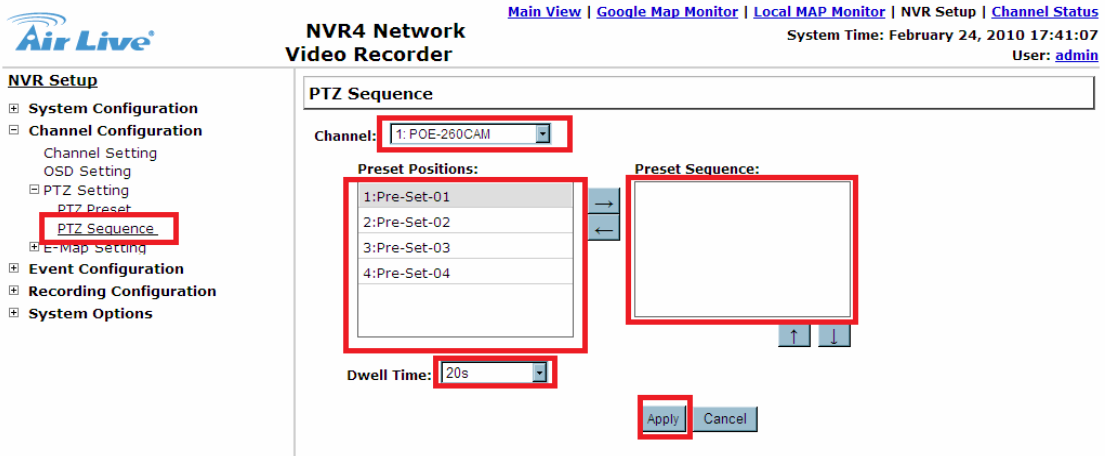
Position No: 4
Position Name: Pre-Set-04

- c. Use the PTZ control provided in the configuration page to set the preset point. Use the “PTZ Speed”, “Zoom”, and “Focus” for further configuring the preset point. And you can also fill some comment in the “Description” as reminder.

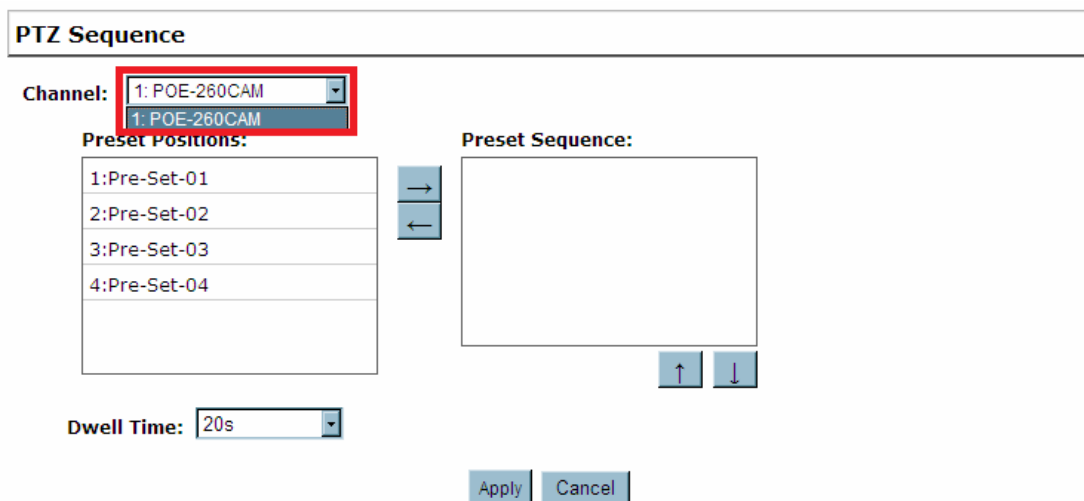


d. Click “Apply” to save the configuration.

3. Once you have multiple preset points, we can set up “PTZ Sequence” to let IP camera automatically do the patrol.



a. Select a channel from the “Channel” drop-down menu.



b. The available preset points should be listed in “Preset Position” area.

PTZ Sequence

Channel: 1: POE-260CAM

Preset Positions:

1:Pre-Set-01
2:Pre-Set-02
3:Pre-Set-03
4:Pre-Set-04

Preset Sequence:

--

Dwell Time: 20s

Apply Cancel

c. Pick the ones you like for sequence viewing and press the “->” button to move them to the “Preset Sequence” section, then use the up and down buttons to adjust their sequencing positions.

PTZ Sequence

Channel: 1: POE-260CAM

Preset Positions:

1:Pre-Set-01
4:Pre-Set-04

Preset Sequence:

2:Pre-Set-02
3:Pre-Set-03

Dwell Time: 20s

Apply Cancel

d. Finally, select a “dwell time” from the drop-down menu and click “Apply” to save the configuration.

PTZ Sequence

Channel: 1: POE-260CAM

Preset Positions:

1:Pre-Set-01
4:Pre-Set-04

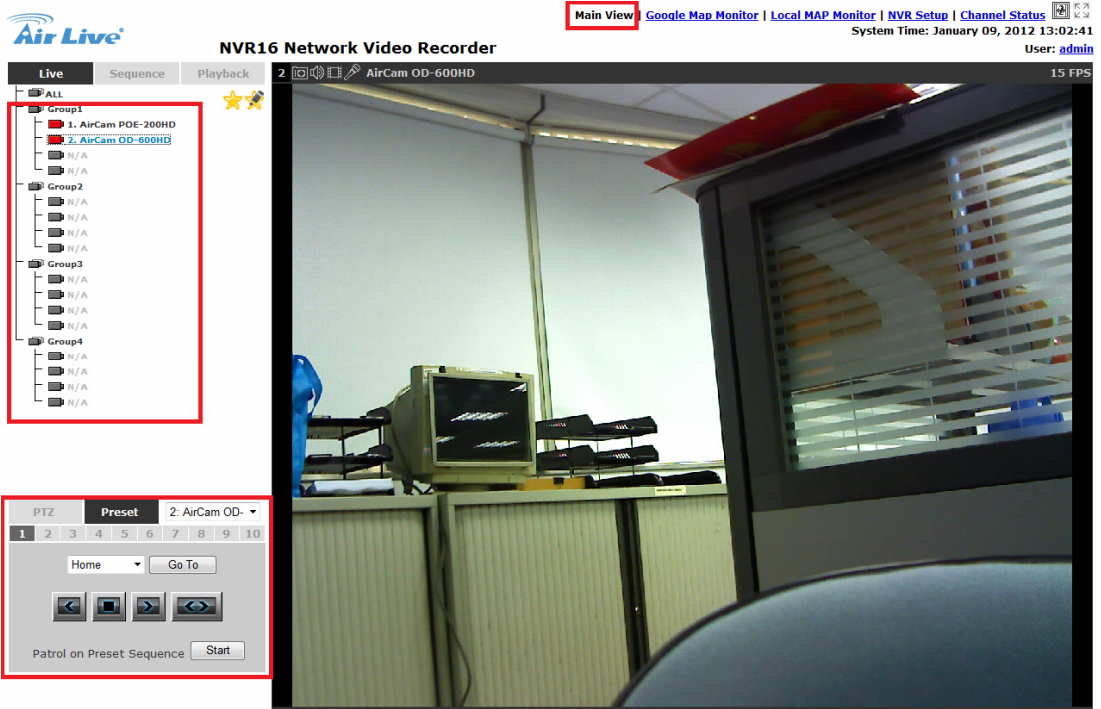
Preset Sequence:

2:Pre-Set-02
3:Pre-Set-03

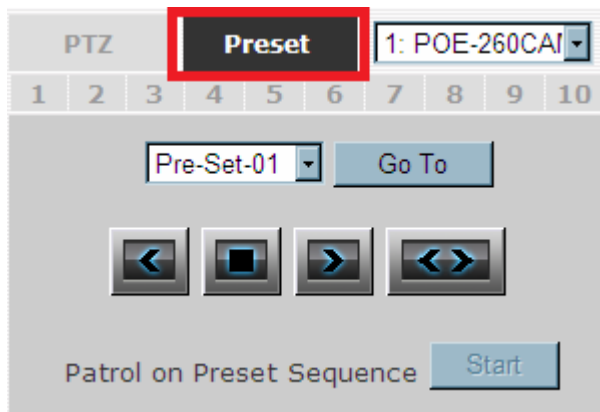
Dwell Time: 20s

Apply Cancel

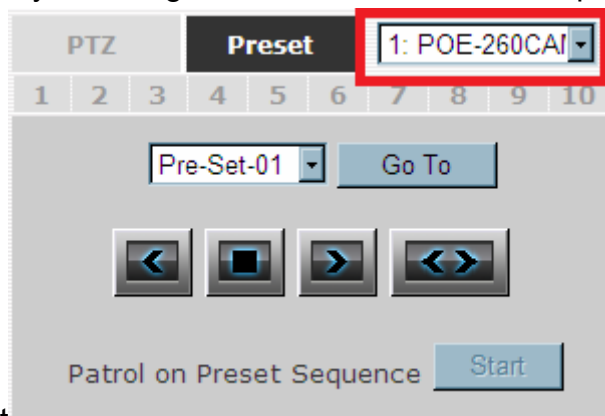
4. Go back to “Main View” and choose PTZ IP camera



a. Please click on the “Preset” tab

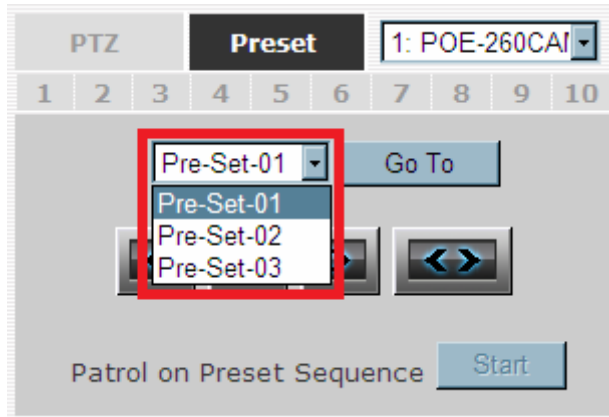


b. Start by selecting a PTZ camera from the drop-down



list

c. Available PTZ preset points of the selected camera will be listed in the drop- down list



d. Click "Start" button to do patrol

