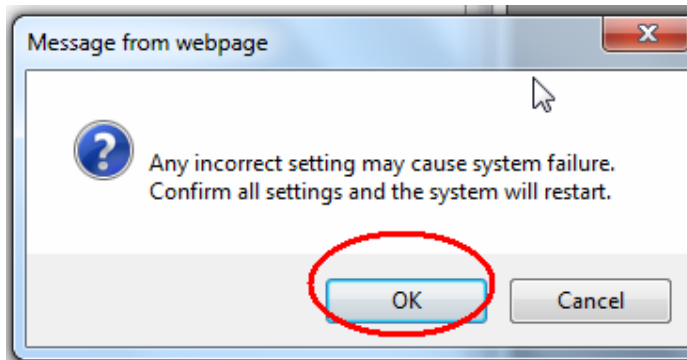


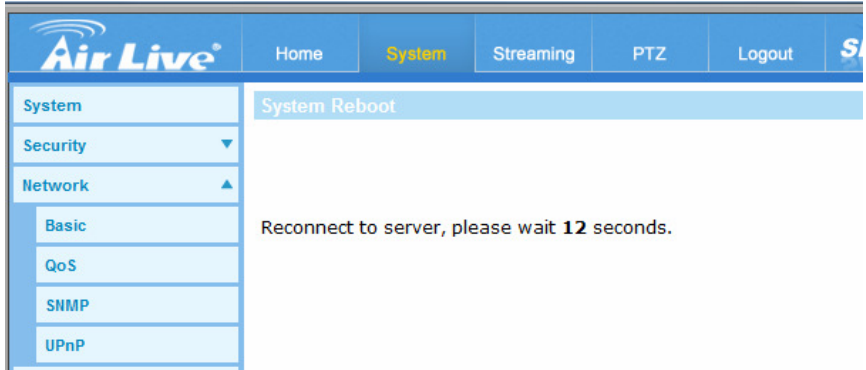
How to get the PPPoE IP address of SD-2020 ?

1) System > Network > Basic , please input the PPPoE Username and Password into the fields and click on the <Save> button to complete the setting.

The screenshot shows the 'Basic' configuration page for the SD-2020 device. The 'Network' menu is expanded to 'Basic'. Under the 'General' section, the 'Use PPPoE' radio button is selected. The following fields are filled: IP address (192.168.0.195), Subnet mask (255.255.255.0), Default gateway (192.168.0.254), Primary DNS (0.0.0.0), and Secondary DNS (0.0.0.0). Under the 'Advanced' section, the 'Web Server port' is 80, 'RTSP port' is 554, 'MJPEG over HTTP port' is 8008, and 'HTTPS port' is 443. A 'Save' button is located below the 'Advanced' section. Under the 'IPv6 Address Configuration' section, the 'Enable IPv6' checkbox is unchecked. Under the 'Device ID' section, the 'Device ID (for DIPS)' is 102027795E and a 'Test' button is present.

2) Click OK button for restart confirm message, the system will restart.





3) After reconnecting, please input below link to get the PPPoE IP address of SD-2020.
<http://<IP>/cgi-bin/admin/param.cgi?action=list&group=Network.PPPoE.IPAddress>

