

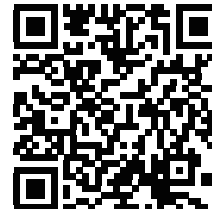


AC-1200UR

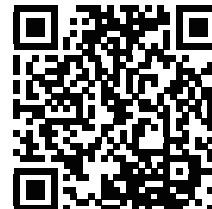
**Wireless Access Point
Quick Installation Guide**

Support

You can download the complete guides and supporting programs from <http://www.airlive.com/product/ac-1200ur/download>, or scan the QR code here.



Please consult with the FAQs <http://www.airlive.com/product/ac-1200ur/faq> before writing to OvisLink Tech Support Team for further assistance



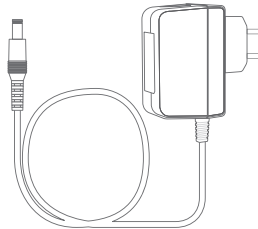
For any other question, please read the user manual in the CD or mail to tech@airlive.com for technical support.

AC-1200UR Package Contents

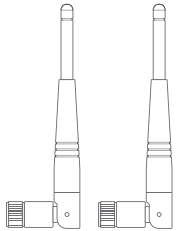
Please check the package contents and contact your distributor if any part is missing.



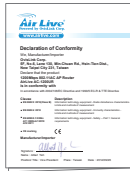
One AC-1200UR
main unit



One 12V 1A DC
power adapter



Indoor Detachable
Dual Band
Omni Antenna x 2

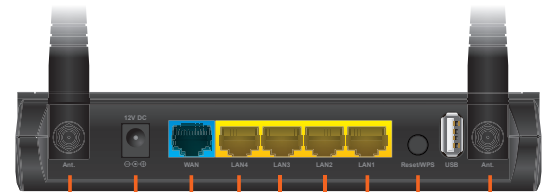


Quick
Start
Guide



User's
Guide
CD

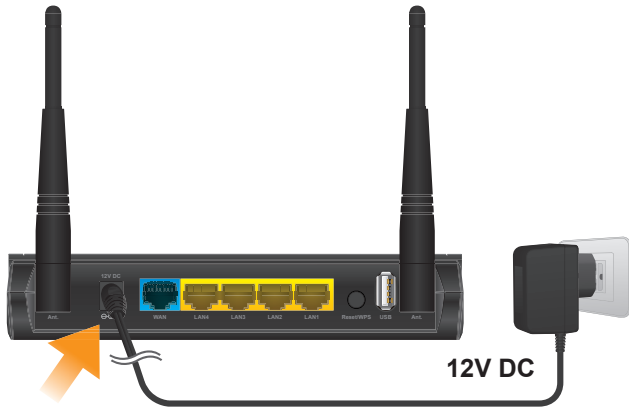
I/O Interface



Antenna Power WAN LAN Reset/
WPS Antenna

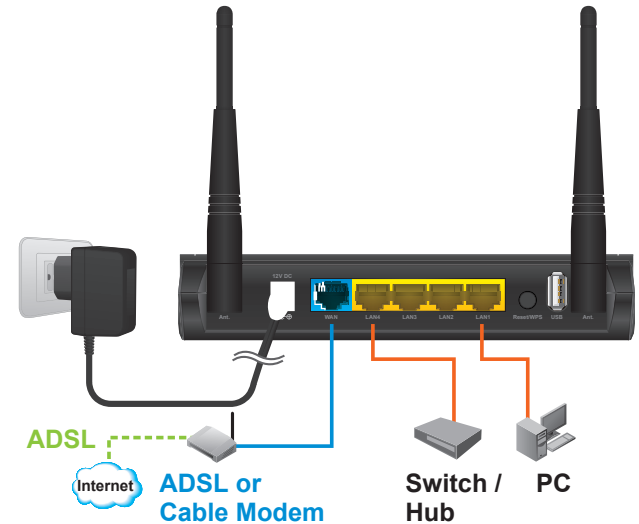
01 Power up the AC-1200UR

Connect the 12V adapter to power up the AC-1200UR



02 Connect AC-1200UR to Network

- Connect your xDSL/ cable modem to the WAN port of router by Ethernet cable
- Connect all your computers , network devices to the LAN port of the router



03 Access AC-1200UR via Browser

The default IP address of AC-1200UR is 192.168.1.254. Please set your PC/NB to the same subnet

Enter the AC-1200UR's IP address into browser to visit the AC-1200UR web UI.

The default username/password is admin/airlive

The default SSID for 2.4G is Airlive

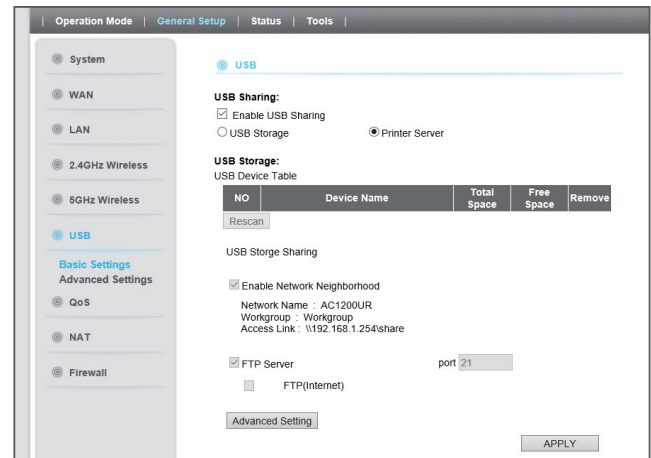
The default SSID for 5G is Airlive-5G



Note: AC-1200UR has 2 radio 2.4G/5G and each radio can work in difference mode. The default mode is AP router. You can change operation mode in webpage.

04 Share USB Storage or USB Printer

Connect the USB dongle or USB Printer into AC-1200UR's USB Port Then go to AC-1200UR's webpage and select to Media Server in General Setup → USB → Basic Settings → Printer Server

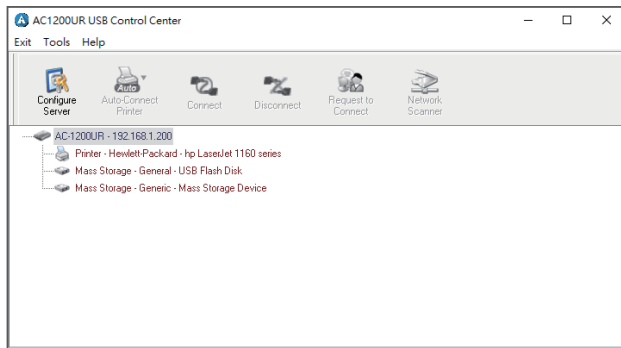


05 Install the AC-1200UR USB Controller

Installs the AC1200UR USB control center in PC and double click the shortcut icon



The software will detect the printer/USB storage automatically if the Media Server feature is enabled.



06 Connect the printer or the USB storage

Select the printer you want to connect and click the Auto-connect. Then the printer/USB storage can be used.

