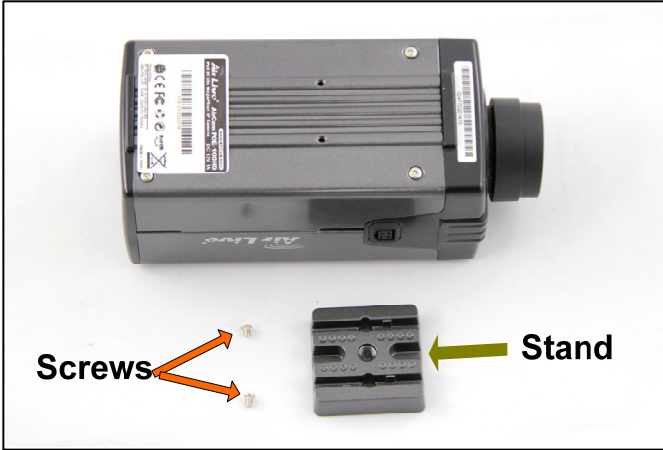


1. Take out the box-type IPCAM body and it's accessories from the package.



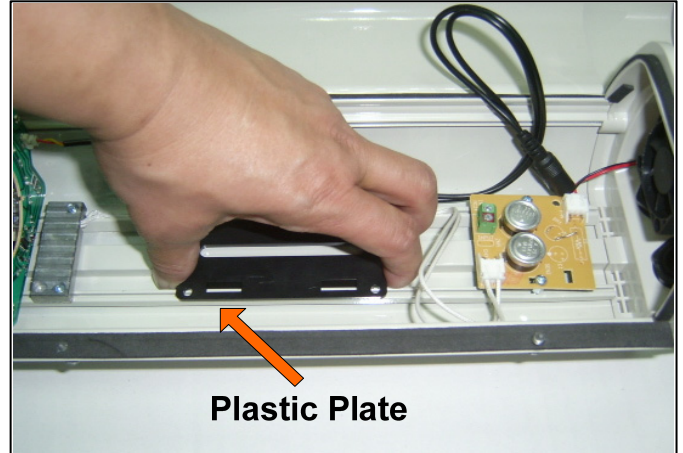
2. Fasten the screws with stand onto the IPCAM.



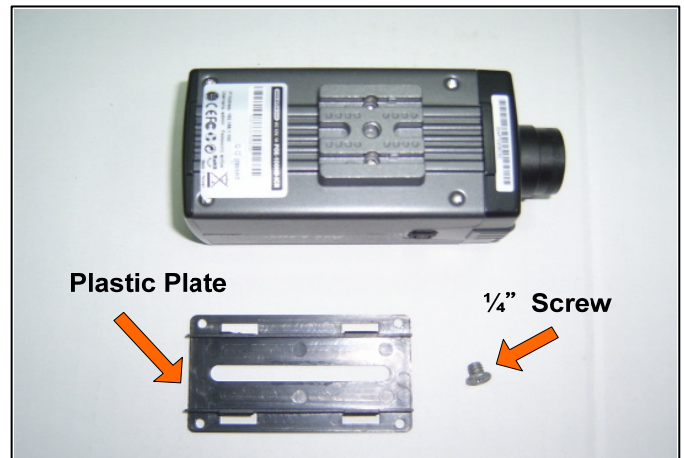
3. Loosen the screws of the ACC-BOXCAM-IR30 casing.



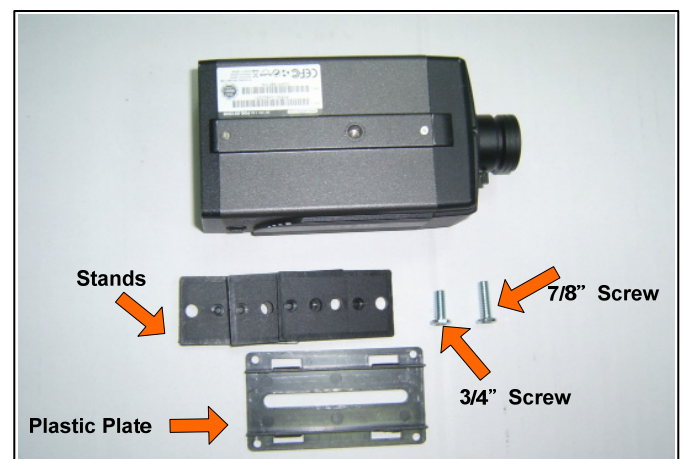
4. Open the cover and plug out the plastic plate inside the ACC-BOXCAM-IR30.



5. (1) For AirLive POE-100HD: Take out the 1/4" screws from ACC-BOXCAM-IR30 accessory bag for the POE-100HD and plastic plate as the photo.



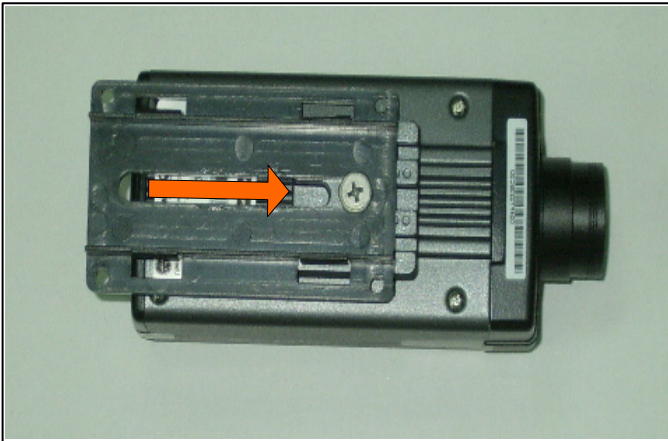
- (2) For AirLive POE-5010HD: Take out the 3/4" screw (for 2 stands) or 7/8" screw (for 3 stands) from ACC-BOXCAM-IR30 accessory bag for POE-5010HD as the photo.



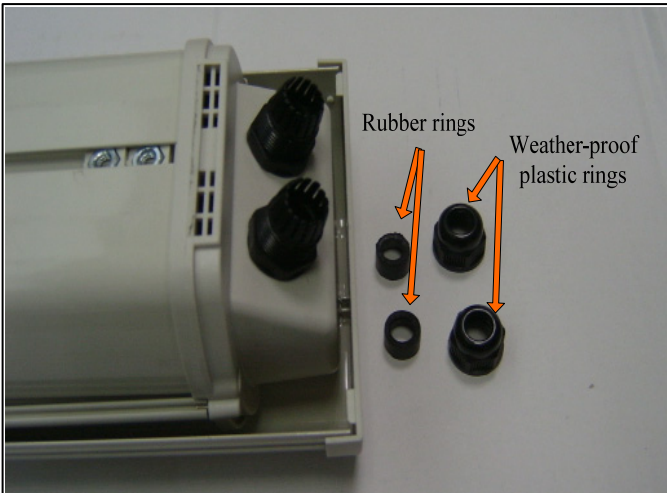
6. Fasten the 1/2" screw with plastic plate onto the IPCAM slightly



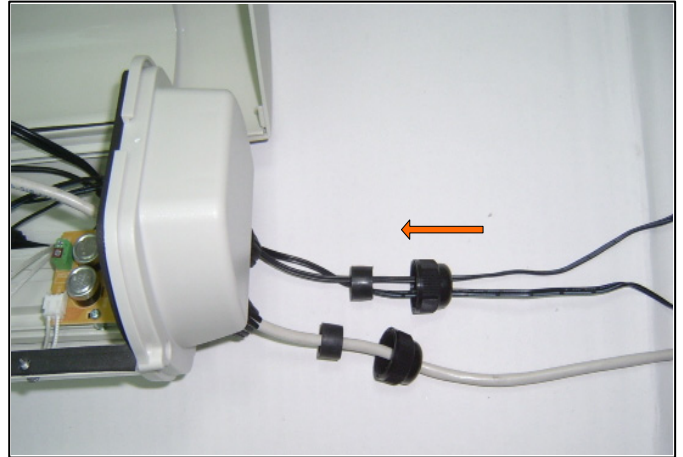
7. Move the IPCAM to the front-end of the plastic plate and fasten the screw tight.



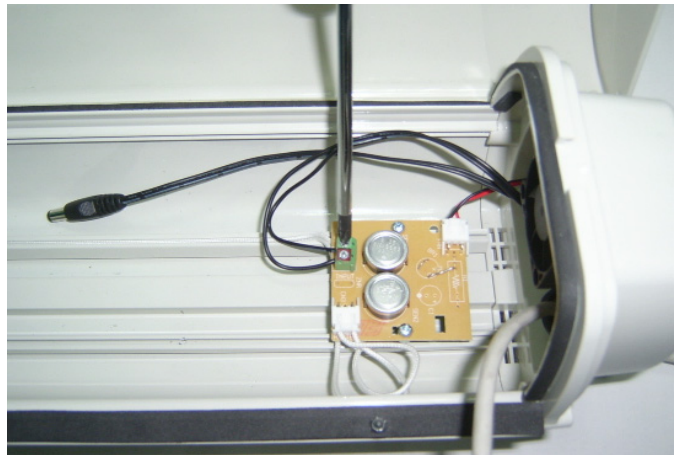
8. Loosen the weather-proof plastic rings and take out the rubber rings



9. Insert the LAN cable(without RJ-45) and DC power cables through the weather-proof plastic ring and rubber rings.



10. Install the 12V DC power for the Heater and Fan. Loosen the screws of the power socket, insert the wires into the (+/-) socket separately, then fasten the screws tight.



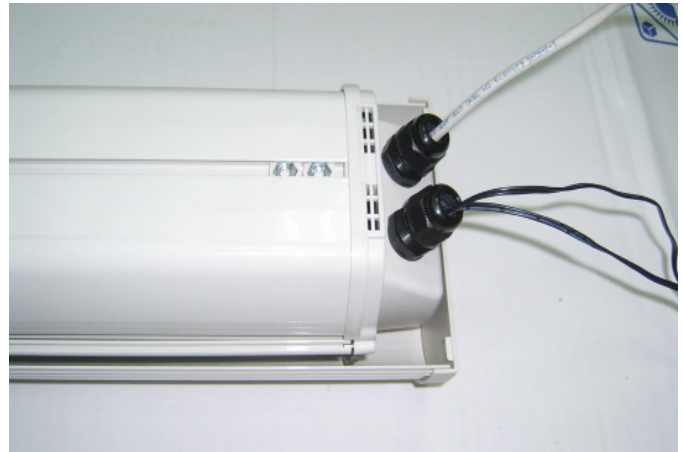
When the Heater and Fan was powered on by plugging the adaptor into the wall outlet, then they will operate as below conditions.

- (1.) The heater will be turned on automatically while the surrounding temperature is $\leq 15^{\circ}\text{C}$ and it will be turned off at $\geq 25^{\circ}\text{C}$.
- (2.) The fan will be turned on automatically while the surrounding temperature is $\geq 35^{\circ}\text{C}$ and it will be turned off at $\leq 25^{\circ}\text{C}$.

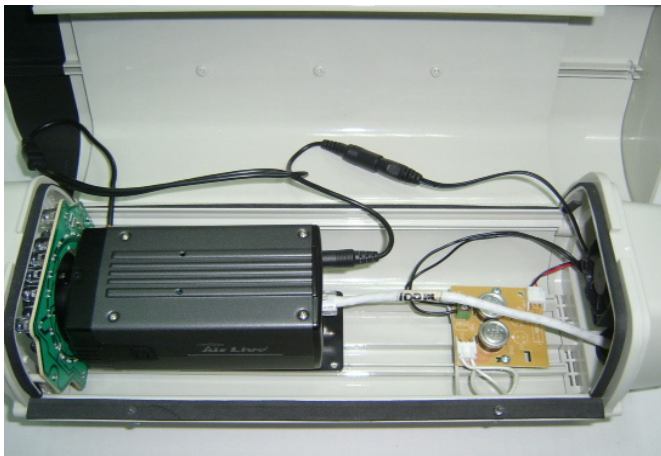
11. Install the 12V DC power for the IPCAM and front panel. Plug the cable of DC adaptor into the power jack of front-panel, then another end of the power jack and LAN cable plug into the IPCAM.



14. Pull out all the cables to the proper position and fasten the weather proof rings tight.



12. Plug the IPCAM with plastic plate into the track of ACC-BOXCAM-IR30 and move it to the front panel .



15. Fasten the screws with the wall mount kit onto the ACC-BOXCAM-IR30 firmly.



13. Fasten the screws into the casing tight.



16. Finally, ACC-BOXCAM-IR30 assembly with wall mount kit is completed.



