

AP60

Wireless-b/g/n Long Range PoE Access Point

Ever since AirLive introduced the world's first multi-function AP in 2002, the AirLive access points have been renowned for their reliability, performance, and rich features. The AP60 is the latest entry following this heritage with breakthrough performance, features, and coverage.

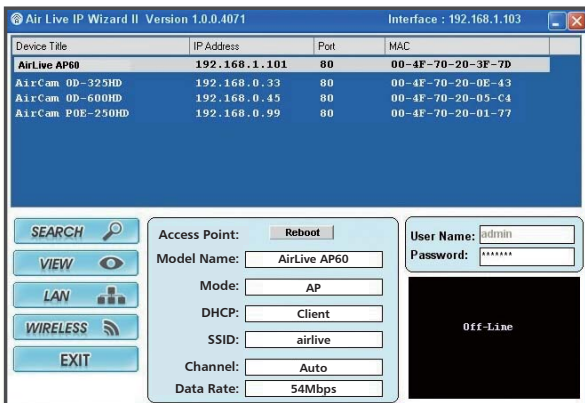
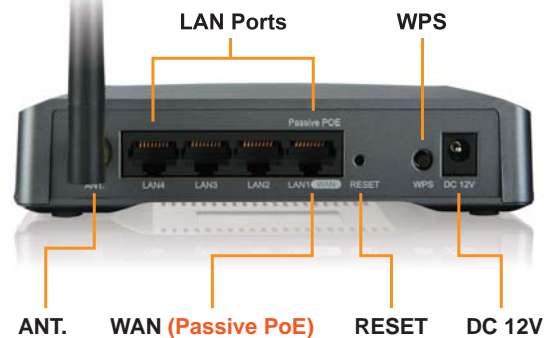


Wireless-b/g/n Long Range Radio

The AP60 features a long range 11b/g/n radio that can deliver up to 29dBm of output power (limited to 20dBm in EU and 23dBm in the U.S.), which means it can have up to 5 times the coverage comparing to normal wireless AP. In addition, it has maximum throughput of 150Mbps and is completely backward compatible with 11g/b devices.

Passive PoE and 4-LAN Ports

Despite of its small housing, AirLive managed to put 4-LAN ports into the AP60. One of the ports also function as passive PoE port and WAN port. The passive PoE port can accept passive PoE input from 12 to 24Volts so you can use AirLive's POE-FSH8PW switch or POE-1P passive PoE kits to install the AP60 away from power source



IP Finder Management

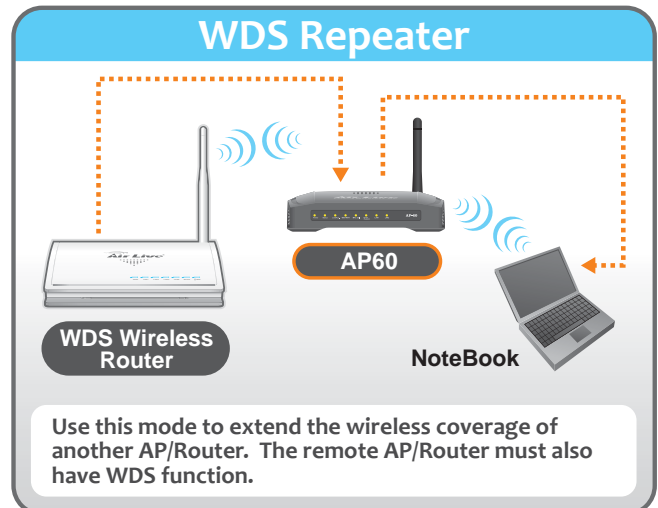
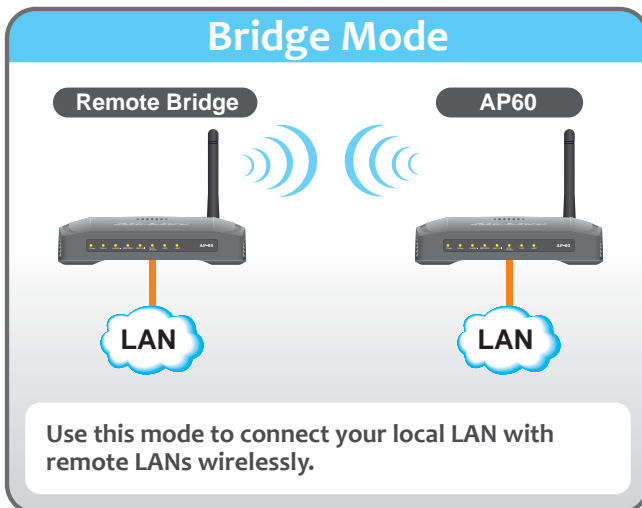
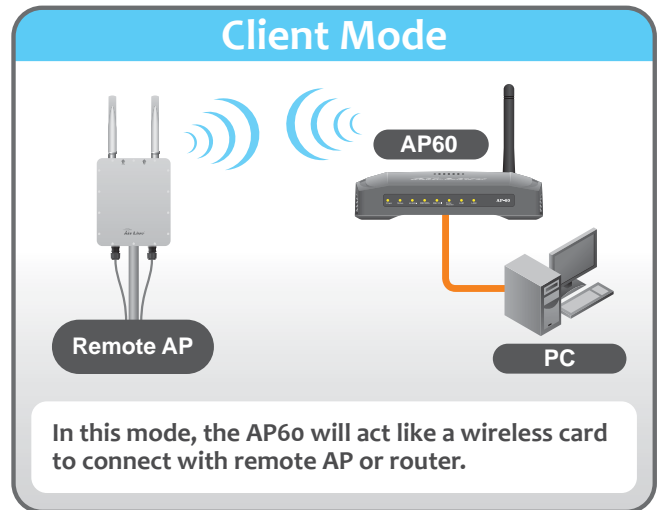
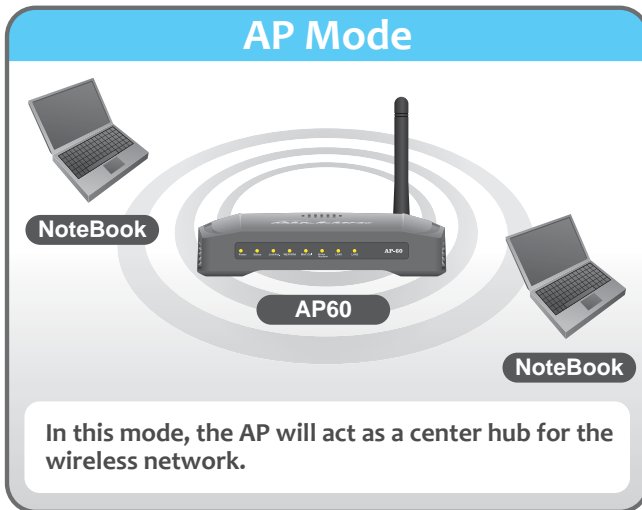
The AirLive AP60 works with AirLive IP Finder Utility. Therefore, you can manage AirLive IP Cameras and AP60 together in the simple to use utility. You can discover the AP and IP Cameras, then change IP, password, SSID, and encryption.

Multiple SSID, Tag VLAN and LAN/WAN Access Control

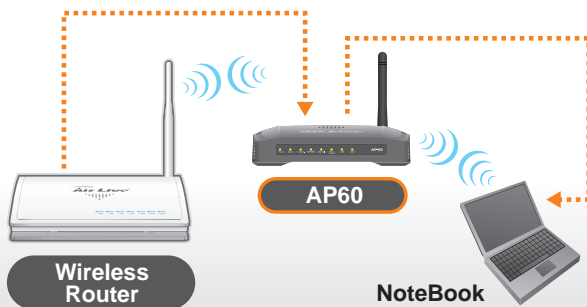
You can create up to 5 virtual APs using AP60's Multiple SSID feature. In addition, each SSID and LAN port can set up different Tag VLAN ID and priority. Best yet, each SSID can be set to have different access right to LAN and WAN port. For example, you can set the "Guest" wireless network to only have Internet Access and no access to your local LAN network. Then set your wireless IPCAM network to have higher priority. This is a very powerful and useful feature not found in ordinary AP

AirLogic Interface 9 Wireless Modes

The AP60 features the easy to use AirLogic interface that is standard on all AirLive AP, so you can get started easily. In addition, 9 wireless modes are featured so you AP can work in different application environments.



Universal Repeater



Universal Repeater can extend the signal of any remote AP/Router.

WISP Router



This mode can share the wireless Internet signal of remote AP Router or WISP network.

WISP+Repeater



This mode can share remote wireless Internet connection to your PC wirelessly. You can also use this mode to share the Internet signal in the hotel room.

AP Router



In this mode, the AP behaves like a normal wireless router. You can connect the Internet line from ADSL Modem or Cable Modem to the WAN Port.

WDS Station



The WDS Station mode is similar to Bridge mode with the exception that the link has added "SSID" as basis for the bridge link.

Wireless Scheduling and Green AP

With the wireless scheduling feature, you can pre-configure the AP-60 before you leave your office or home, so when the time is up, the AP60 will start to execute the routine jobs automatically, it will reduce the power loading and save your bill. The AP60 is also a green AP which only use about half the power consumption comparing to other APs in the same class.

Manufacturer

OvisLink Corp.

5F, No.96, Min-Chuan Rd., Hsin-Tien Dist., New Taipei City 231, TAIWAN

www.airlive.com

Specifications

Feature

- 802.11n Multi-Function Wireless PoE Access Point
- 4 x 10/100Mbps LAN Ports
- Setup Wizard + Multi-Language UI
- Up to 5X More Distance
- 9 Wireless Operation Mode
- Bandwidth Control and Antenna Alignment Signal Survey
- Multiple SSID, Tag VLAN, Watch Dog, Bandwidth Control
- Wireless to LAN or WAN Access Control
- Support Security 802.1x, WPA, WPA2
- ACK Timeout Adjustment
- Up to 29dBm Output Power, Limited to 23dBm in U.S. and 20dBm in EU

Hardware

- 4 x 10/100 Mbps Ethernet Port with Auto MDI/MDI-X Support
- 12V Passive PoE Port (LAN1)
- Reversed SMA Female Antenna Port
- Power, WPS, WLAN, LAN LED Indicators
- 150N 1T1R 11b/g/n Radio
- Up to 29dBm Output Power (20dBm in EU, 23dBm in the U.S.)
- 4MB Flash, 32MB SDRAM
- Wall Mount Screw Holes
- Reset Button
- WPS Push Button

Antenna

- 2 dBi detachable Dipole Antenna
- Reversed SMA Male Connector

Frequency Range

- USA (FCC) 11 Channels: 2.412GHz~2.462GHz
- Europe (ETSI) 13 Channels : 2.412GHz~2.472GHz
- South America: 14 Channels : 2.412GHz~2.472GHz

Receiver Sensitivity

- 802.11b 11Mbps \leq -88dBm
- 802.11g 54Mbps \leq -74dBm
- 802.11n HT20 MCS7 \leq -71dBm
- 802.11n HT40 MCS7 \leq -68dBm

Data Rate

- 802.11n
 - 20 MHz BW(LGI): 65, 58.5, 52, 39, 26, 19.5, 13, 6.5
 - 40 MHz BW(LGI): 135, 121.5, 108, 81, 54, 40.5, 27, 13.5
 - 20 MHz BW(SGI): 72.2, 65, 57.8, 43.3, 28.9, 21.7, 14.4, 7.2
 - 40 MHz BW(SGI): 150, 135, 120, 90, 60, 45, 30, 15
- 802.11g: 54, 48, 36, 24, 18, 12, 9 and 6 Mbps
- 802.11b: 11, 5.5, 2 and 1 Mbps

Modulation

- 802.11n: BPSK, QPSK, 16-QAM, 64-QAM
- 802.11g: OFDM
- 802.11b: CCK, QPSK, BPSK

Output Power

- ETSI(Europe) - About 20dBm max
- FCC(The United States) - About 23dBm max
- South America - About 29dBm max

Security

- 64/128-bit WEP
- WPA/WPA2-PSK support
- 802.1x Radius Support
- WPA Enterprise support in AP/WDS mode

Configuration

- Web Management
- Hide ESSID
- 802.1x
- MAC Access Control
- MAC Access Table
- Wireless Client Isolation, Channel, RTS Threshold, Frag Threshold

Environmental

- Operating temperature: -5~50 Degree C
- Operating humidity (non-condensing): 10~90%
- Storage temperature: -30~70 Degree C
- Storage humidity: 95% Max

Power Supply

- Power Adapter Voltage : input 100~240Vac/
50~60Hz , output 12V/1A
- Advance Passive PoE (Accept up to 24 volts).
Passive PoE DC Injector not included

EMI

- FCC, CE

Product Weight

- 151 g

Product Size (L x W x H)

- 137 x 88 x 30 mm

Ordering Information:

- AirLive AP60** Wireless-b/g/n Long Range PoE Access Point, ETSI
Wireless-b/g/n Long Range PoE Access Point, FCC
Wireless-b/g/n Long Range PoE Access Point, South America