

## AirLive ARM-204

### ADSL2/2+ Router

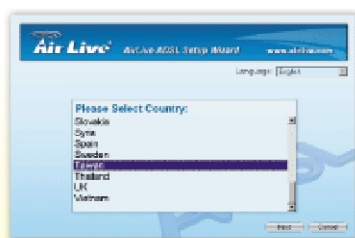
The AirLive ARM-204 is a powerful router with integrated ADSL modem. For users whose ISP offers USB ADSL modems that make IP sharing difficult or for those who prefer all-in-one design, the ARM-204 provides the complete IP sharing solution with the renowned OvisLink user friendly interface and elegant housing. Just plug in the ADSL line into the router, the entire wired and IP sharing network is instantly established.

#### Automatic Installation Program

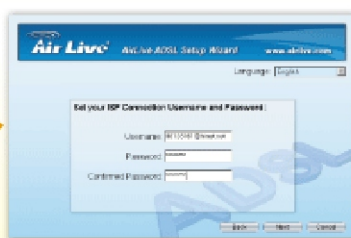
Traditionally, setting up an ADSL modem router will require user to input parameters such as Encapsulation, VPI, VCI, Handshake protocols and more.... This procedure intimidates average users who might find the parameter values difficult to obtain. With the CD setup Wizard, you no longer have to deal with the complex ADSL parameters. Just follow the setup about the country and ISP you are using and enter the ISP's login and password. Then the router is ready to work. If your country or ISP is not on the list, just tell us, we can add them in the future release.



#### Simple Installation



Select your country and ISP



Enter your ISP account information

**Finished!**

#### Global ADSL Compatibility

G.DMT and G.Lite are supported for connections up to 8Mbps downstream and 1Mbps upstream. Annex A and Annex B/UR2 are available for ADSL over conventional telephone or ISDN lines. In addition, the router features PPPoA and PPTP client to ensure compatibility with Alcatel DSLAM and PPTP users.

#### ADSL 2/ ADSL 2+

In addition to current ADSL 8Mbps ADSL spec. The ARM-204 is also compatible with the 12Mbps ADSL2 and 24Mbps ADSL2+ spec. Therefore, the ARM-204 is not only ready for today, but also for tomorrow's ADSL standards.

#### ESD and Power Surge Protection

The ARM-204 is designed to perform reliably in adverse power and weather condition. The built-in Electrostatic Discharge Protection circuit minimizes the effect of static electricity in the stormy weather environment. Each ARM-204 comes with full range switching power supply to protect the equipment from uneven voltage. Although these extra protection increase costs, the extra protection they bring will reduce the long term service and maintenance cost.



## FEATURES & SPECIFICATION

### Specification

#### FEATURES

- CD based Auto Installation for Argentina, Austria, Australia, Belgium, Czech, Denmark, Egypt, France, Germany, Israel, Italy, Netherlands, Norway, Poland, Portugal, Saudi Arabia, Slovakia, Spain, Sweden, UK, and more...
- ADSL Router with built-in Modem
- Up to 24Mbps downstream(ADSL2+) and 3.5Mbps upstream bandwidth(ADSL2+M)
- Support ANSI T1.413 Issue 2, ITU-T G.992.1 (G.DMT) and ITU-T G.992.2 (G.LITE) Annex A/B ADSL standards
- Support G.992.4 ADSL 2(12Mbps) and G.992.5 ADSL2+(24Mbps)
- 4 x 10/100Mbps switching ports with Auto MDI/MDIX functions
- Web-based management
- UPnP support
- Annex A, B, I, M, L Support
- WPA-PSK, WPA2-PSK support

#### Hardware Interface

- 1 x RJ-11 ADSL Port
- 4 x 10/100Mbps switching ports
- 12Vdc power adapter

#### ADSL Data Mode

- G.992.2 (G.LITE) : Downstream and Upstream data rates up to 1.5Mbps and 512Kbps
- G.992.1 (G.DMT): Downstream and Upstream data rates up to 8Mbps and 1Mbps
- G.992.4 splitterless ADSL 2: 12Mbps
- G.992.5 ADSL 2+: 24Mbps
- ATM Protocol
- Annex A for ADSL over analogue phone line
- Annex B/UR2 for ADSL over ISDN line
- Annex I, Annex M, Annex L Support

#### WAN Mode Support

- PPP Over ATM (RFC2364) and PPP Over Ethernet (RFC 2516)
- DYNDNS.org support

#### LAN Mode Support

- Auto Encapsulation Detection
- Bridge/Routed Ethernet Over ATM (RFC1483)
- Classical Internet Protocol Over ATM (RFC 1577)
- Multi-VCS support up to 8 PVCs

#### Bridge Mode

- IEEE 802.1D
- Supports MAC Bridge control

#### Router Mode

- IP routing-RIPv2, Static routing, DHCP Server and Client
- NAT, ICMP

#### Firewall

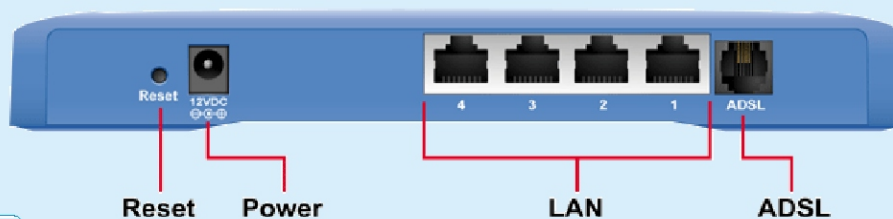
- DMZ, Virtual Server
- SPI Firewall
- ACL Access management

#### Security

- User authentication for PPP
- PAP (Password Authentication Protocol), CHAP (Challenge Authentication Protocol)

#### Certifications

- FCC Part 15/FCC Part 68
- CE/ EN60950 3rd Ed.



### Ordering Information

**AirLive ARM-204-A**  
**AirLive ARM-204-B**

4-port ADSL Modem Router, Annex A  
4-port ADSL Modem Router, Annex B/U-R2