

## BC-5010-IVS

### 5-Mega Pixel Box Type PoE IP Camera with Video Analytics

- 5 MegaPixel High Resolution Sensor
- 15 FPS at 5MP, 25 FPS at 3MP, 30FPS at 1080P
- Optional Wireless-N Function
- WDR Support
- Clear Motion Technology
- DC Iris Support and IR-CUT Removable (ICR)
- SD/SDHC Memory Card Slot for Local Storage
- Compatible with ONVIF Standard
- 802.3af/at Power over Ethernet Port
- Support both C and CS Mount Lens
- Built-in Intelligent Video Analytics Including Face Detection, iMotion Detection, Trip Zone, Object Counting, Face Recognition, e-Fence



**A**irLive BC-5010-IVS is the new generation of 5 MegaPixel box type IP Camera with video analytics from AirLive, it improves the frame rate up to 15 FPS at 5 MegaPixel resolution and it also provides SD slot and USB port for local storage. Moreover, with optional wireless dongle, AirLive BC-5010-IVS can support wireless connection.



### 5 MegaPixel Video Resolution with Higher Frame Rate and Lower Lux Illumination

AirLive BC-5010-IVS can offer you smoother video. At 5 MegaPixel resolution, new processor can process 15 frames per second. In addition, it can also operate at 3 Mega-Pixel at 25 frames per second or 1080P at 30 frames per second. The enhanced sensor can work in light condition as low as 0.2 lux. Therefore, AirLive BC-5010-IVS can offer better quality video in low light environment.

### Clear Motion Technology

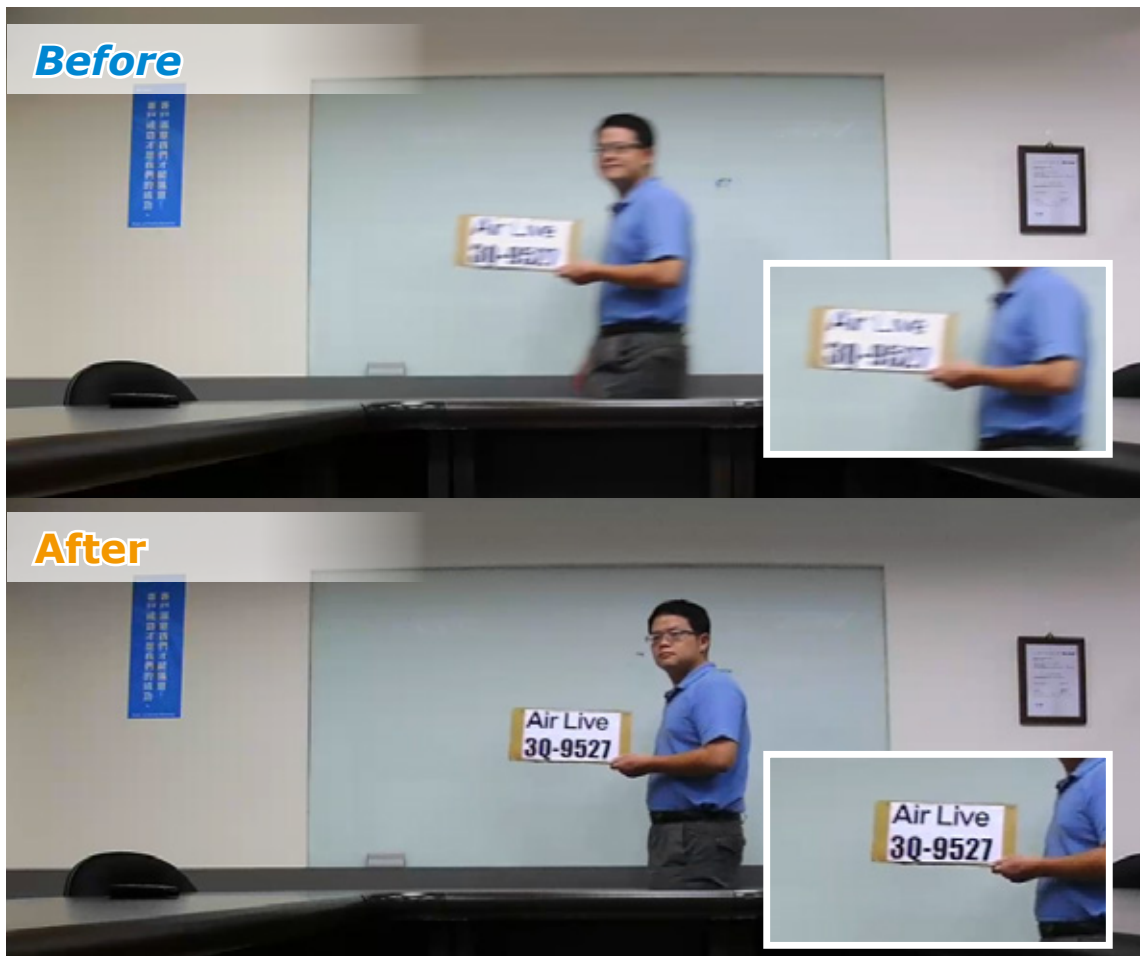
AirLive BC-5010-IVS provides bright and colorful image due to its high quality low lux sensor. However, the most beautiful image will be useless if it is not able to catch the details of moving objects. AirLive has developed the Clear Motion Technology to minimize the motion blur caused by moving objects. So you can have the details where you need it.

Manufacturer

**OvisLink Corp.**

5F, No.96, Min- Chuan Rd., Hsin- Tien Dist., New Taipei City 231, TAIWAN

[www.airlive.com](http://www.airlive.com)



### New SecurSense User's Interface

The BC-5010-IVS features the new SecurSense interface from AirLive. Not only it is very easy to use and work correctly for different browser environments, it also has the most completed set of functions. Functions, such as "Push-to-Talk" and "Audio File Playback", allow your IPCAM to say a pre-recorded phrase or audio songs when alarms are triggered.

### Changeable Lens and Auto-Iris Support

AirLive BC-5010-IVS can support both C mount and CS mount lens without needs for adapters. In addition, the support for Auto-Iris lens allows automatic aperture adjustment to improve image quality to avoid over exposure.



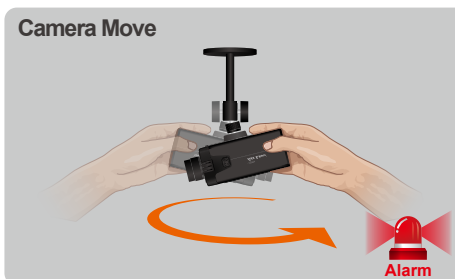
## WDR Support

When strong back light is surrounding a subject, camera with wide dynamic range technology can adjust the intense backlight and dark area to balance the whole screen. Therefore, user can recognize the details in the bright and dark area.



## Tampering Detection

The tampering detection function will provide alarm when AirLive BC-5010-IVS is under attack. For example, if the intruder tries to move it to the other side, AirLive BC-5010-IVS will recognize the attack and send out the alarm or trigger the digital output devices.



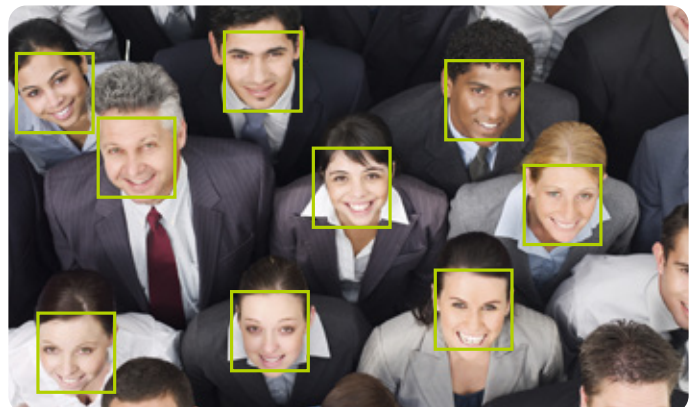
## Intelligent Video Analytics

AirLive BC-5010-IVS provides multiple intelligent video analytics that helps you to save your human resources and reaches the goal of automatic surveillance.

- \* When IVS enabled, the resolution is limited to 2 Megapixel maximum. It is recommended to set the resolution to 1 Megapixel for best performance.
- \* Please check our step-by-step guide for installations and limitations before making a purchase.

## Face Detection

Face detection is a precise feature which needs highly accurate rate of recognition on human faces only. The software is able to count many faces in the image and also highlights those faces simultaneously so the administrator will be easier to look in detail on each face at a specific environment.







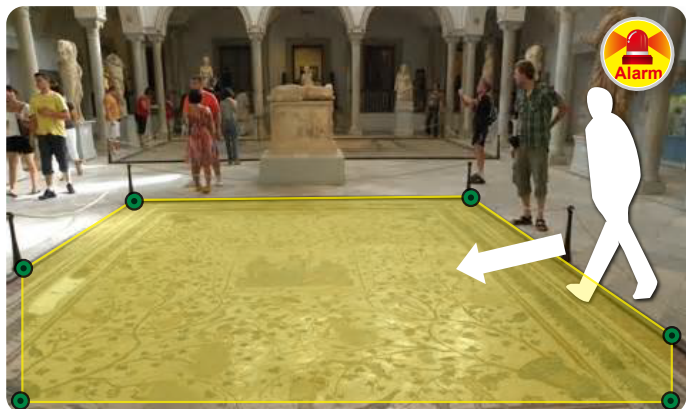
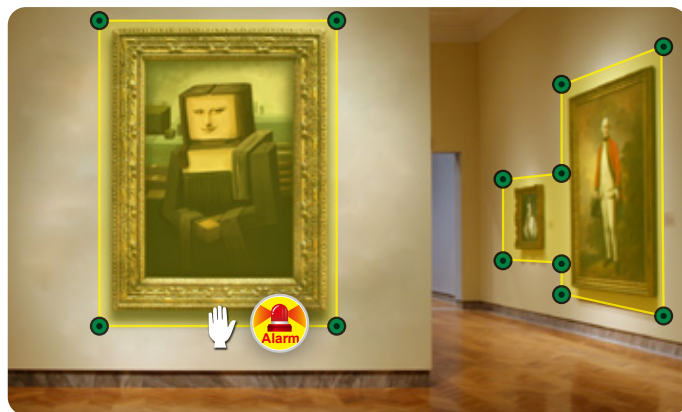
## Face Recognition

The key feature of Face Recognition is to recognize faces for access control or any suspicious persons in camera which is matched to the database. You can save up to 10 face images to AirLive BC-5010-IVS for recognition, so when the camera catches the face which is matched the database, the camera will trigger the related output devices for necessary reaction.

\* The face Recognition is limited to 10 faces maximum when used in standalone recognition mode. This limit can be increased when used as secondary guard with access control system.

## iMotion Detection

Intelligent Motion Detection is able to increase accuracy of detection and also provides more flexible settings with polygon for the detection area.

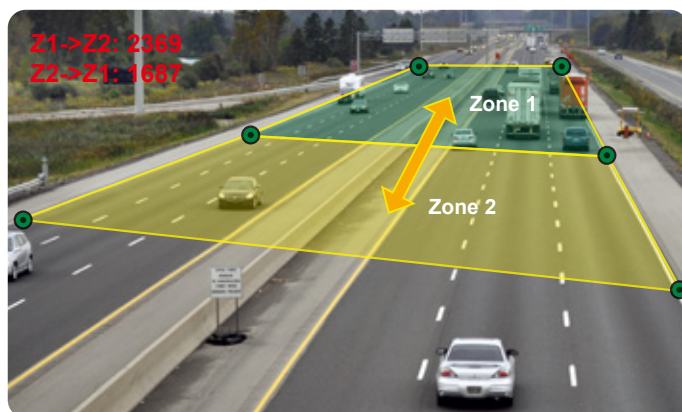


## e-Fence

The e-Fence is an electronic fence protection system which is able to detect and send output alert if any object is crossing the boundaries you set in the camera. e-Fence can be used in many applications, such as a standalone protection area, or other protection systems, like airports, power plants, radio towers or even military camps.

## Object Counting

The Object Counting makes store owners easier to calculate the number of people in and out of the store. You may choose one way or two way directions for counting. The numbers can be displayed on screen and saved to the database. It is also useful to calculate the amount of traffic flow on the highway.



Manufacturer

**OvisLink Corp.**

5F, No.96, Min- Chuan Rd., Hsin- Tien Dist., New Taipei City 231, TAIWAN

[www.airlive.com](http://www.airlive.com)

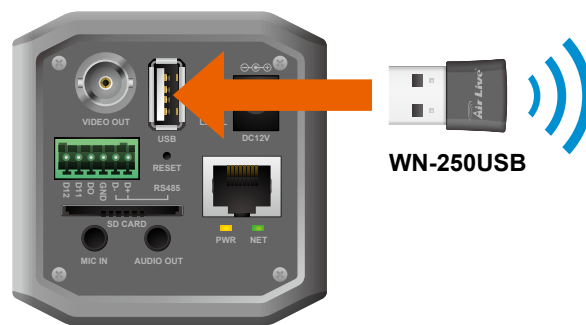


## Trip Zone

The Trip Zone is an area protection based on two virtual areas with a line in center drawn in the software. When any object moves across the line, it will trigger BC-5010-IVS and trigger alarm. It can detect one way direction or two way directions. It is useful to protect walls, railroad platform, or parking lot entrance.

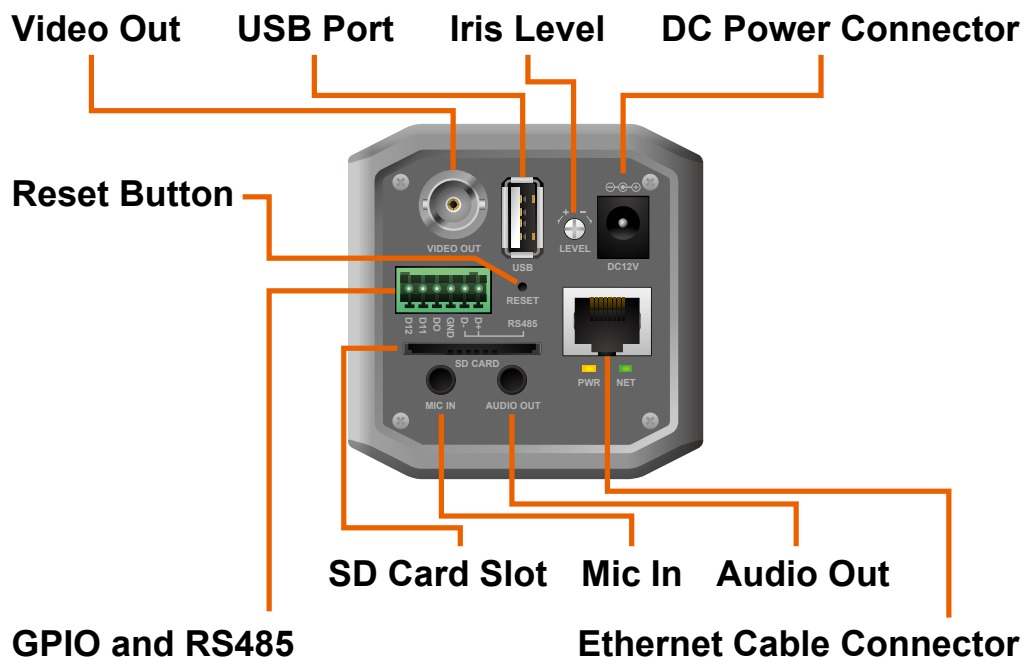
## Wireless function with wireless dongle (Optional)

The BC-5010-IVS can support AirLive WN-250USB wireless USB Adapter. The WN-250USB supports 2.4GHz frequency band at 150Mbps speed. Simply purchase the optional WN-250USB and plug into AirLive BC-5010-IVS's USB port.



## Diverse of Interface for Integrating

AirLive BC-5010-IVS supports SD/SDHC card and USB flash drive for local storage. It also supports DI/DO for further integrating with additional sensor and alarm. By connecting AirLive BC-5010-IVS with the external microphone and speaker, it can perform the two-way audio function.



## Optional High Mega-Pixel Lens

AirLive, the leading IP camera manufacturer, has launched high quality Mega-Pixel lenses. ACC-MPL-4mm V2 is a Mega-Pixel CS mount lens, and suites for general daily usage. ACC-MPL-2812VF V2 and ACCMPL- 850VF are vari-focal lenses with Auto Iris. The advantage of a vari-focal lens is that its focal length and field of view (FOV) can be changed manually and hence can be used more flexibly. The focal length of ACC-MPL-2812VF V2 is from 2.8 to 12mm (4X). You can apply its wide end FOV in locations where an overlook is needed, such as entrance, hall way, or parking lot. And you can use its tele end for some critical areas like paying-counter. The focal length of ACC-MPL-850VF is from 8 to 50mm and it can be used in most of projects.

With BC-5010-IVS and POE-5010HD, AirLive's Mega-Pixel lens can provide you a high quality video no matter in day time or night time. The Auto-Iris function can automatically adjust the aperture of the lens and give you a stable image in an outdoor environment with changing light source.



## CamPro Professional, CamPro Express 64 and ONVIF Support

The CamPro Professional is AirLive's intelligent video surveillance recording software which is designed to meet most demands for professional installations. The Professional version greatly enhances the video analysis functions that can be applied to diverse surveillance scenarios. What's more, the BC-5010-IVS also supports ONVIF standard for ensure the cooperation between AirLive BC-5010-IVS and other well-known CMS in the main market.



## CamPro Mobile



Available on the  
**App Store**



ANDROID APP ON  
**Google play**

## APPS for Mobile Device

AirLive provides CamPro Mobile APP for iOS/Android device, so you can view multiple AirLive IP cameras by your mobile device. For more information, please visit the APP store or Android market.

### Specifications

#### Camera

##### Camera Type

- Indoor Box Type

##### Max Resolution

- 2592 X 1920

##### Image Sensor

- 1/2.5" 5 Mega Pixel Color CMOS Sensor

##### Sensor Resolution

- 2592 X 1920

##### Lens Type

- C/CS Mount Lens Support
- Removable Lens

##### Night Vision

- Built-In Removable IR Cut Filter

##### Minimum Illumination

- 0.2 LUX

##### Mechanical IR-Cut Filter

- Yes

##### Auto Iris

- DC-Iris Support

#### Viewing Angle

- Depend on lens

#### Analog Video Out

- Yes

#### Video

##### Video Compression

- H.264 High/Main/Baseline Profile, MPEG4 Simple Profile and MJPEG

##### Video Profile

- 38

##### Resolution and Frame Rate

- 15 fps @ 2592 X 1920
- 25 fps @ 2048 x 1536
- 30 fps @ 1920 x1080
- 30 fps @ 1280 x 1024
- 30 fps @ 1280 x960
- 30 fps @ 1280 x 720
- 30 fps @ 720 x 480
- 30 fps @ 640 x 480
- 30 fps @ 320 x 240
- 30 fps @ 176 x 144

##### Streaming

- Multi-profile streaming
- Streaming over UDP, TCP, or HTTP



- M-JPEG streaming over HTTP (for non IE browser)
- 3GPP mobile view
- Configurable frame rate and bandwidth
- Support both CBR and VBR

#### **ROI**

- Yes

#### **Image Processing**

- AE, AWB
- Noise reduction
- Saturation, brightness, sharpness, contrast, Hue
- AirLive Clear Motion Technology for Moving Objects
- Mirror/Flip
- Text, time and date OSD

#### **Digital Zoom**

- 10X

#### **Audio**

##### **Audio Encoder**

- G711 u-law
- AMR

##### **Audio Streaming**

- Two-way

##### **Audio Input/Output**

- speaker port and microphone port

#### **Network**

##### **Ethernet**

- One RJ45 Port; IEEE 802.3u Compliant 10/100 Mbps Fast Ethernet with Auto-MDIX

##### **PoE**

- IEEE802.3af/at

##### **Wireless**

- Optional

##### **Supported Protocols**

- TCP/IP, IPV6, UDP, ICMP, DHCP, NTP, DNS, DDNS, SMTP, FTP, HTTP, HTTPS, Samba, PPPoE, UPnP, Bonjour, RTP, RTSP, RTCP, DLNA, ONVIF 2.2, ISCSI

#### **Security**

- Password protection
- IP filter
- HTTPS

#### **Users**

- Up to 20 simultaneous users

#### **LED and Button**

##### **Power LED**

- Yellow Color

##### **Link/Act. LED**

- Orange Color/Flash Orange

##### **Reset Button**

- Reboot and Factory Default (Push and Hold Over 5 Sec)

#### **General**

##### **Network Processor**

- DSP Base

##### **System ROM**

- 128MByte NAND Flash

##### **System RAM**

- 128Mbyte DDR SDRAM

##### **Power Supply**

- DC12V

##### **Power Consumption**

- 4 Watts Max.

##### **Connector**

- RJ-45 10BaseT/100BaseTX
- 12V DC power jack
- Microphone/Speaker jack
- DIDO
- Reset button

##### **Environment**

- Operation: Temp: -5°C ~ 55°C Humidity: 20% ~ 85% non-condensing
- Storage: Temp: -15°C ~ 60°C Humidity: 0% ~ 90% non-condensing



**SD card slot**

- SD/SDHC

**Dimension**

- 135 \* 65 \* 65 mm

**System Integration****Software**

- AirLive CamPro Mobile
- CamPro Express 64, CamPro Professional
- Search & Installation- IP Wizard II

**Event Triggers**

- Motion detection, External input via DI interface, Tamper detection, Face detection, iMotion detection, Trip zone, Object counting, Face recognition, e-Fence

**Motion Detection**

- 3

**Event handler**

- FTP or NAS file upload
- E-mail alert
- HTTP, and TCP notification
- DO (digital output) alarm
- SD/USB file upload

**UPNP**

- Yes

**Application Programming Interface**

- ONVIF 2.2
- Open API for software integration
- SDK

**Video Buffer**

- Pre- and post- alarm buffering

**Alarm Events**

- Motion detection, External input via DI interface, Tamper detection, Face detection, iMotion detection, Trip zone, Object counting, Face recognition, e-Fence

**Continuous recording**

- Yes

**Intelligent Video Analytics(IVS)****Build in IVS function**

- Face detection
- iMotion detection
- Trip zone
- Object counting
- Face recognition
- e-Fence

**Viewing System****OS**

- Windows® XP, Vista, 7, 8

**Browser**

- IE 7.0 or later, Firefox 2.0 or later, Safari, Google Chrome

**Cell Phone**

- With 3GPP player, CamPro Mobile for iOS/Android device

**Video Player**

- VLC, Quick Time, Real Player, Core Player

**Ordering Information:**

**AirLive BC-5010-IVS**     5-Mega Pixel Box Type PoE IP Camera with Video Analytics