

AirLive CamPro Express 64

Why We Need CamPro Express

The CamPro Express 64 is the ideal video management software for home to enterprise application. It's capable of managing up to 64 AirCam IP cameras. Deliver and store high quality live video on the network.

Depending on the built-in graphic analyzes function; CamPro Express 64 can detect the motion area to pixel accuracy. Remote monitoring and playback is possible through the web browser.

CamPro Express 64 is compatible with most major brand cameras and its ability to automatically search and find the available cameras on the network can greatly reduce the user's effort when configuring the system.



Live Video

System Info

Camera Status

P/T Control Panel

System Log

System Buttons

Drag and drop video placements

The CamPro Express 64 Support Drag and drop video placements. You can click any video live stream and place any block of live monitor.



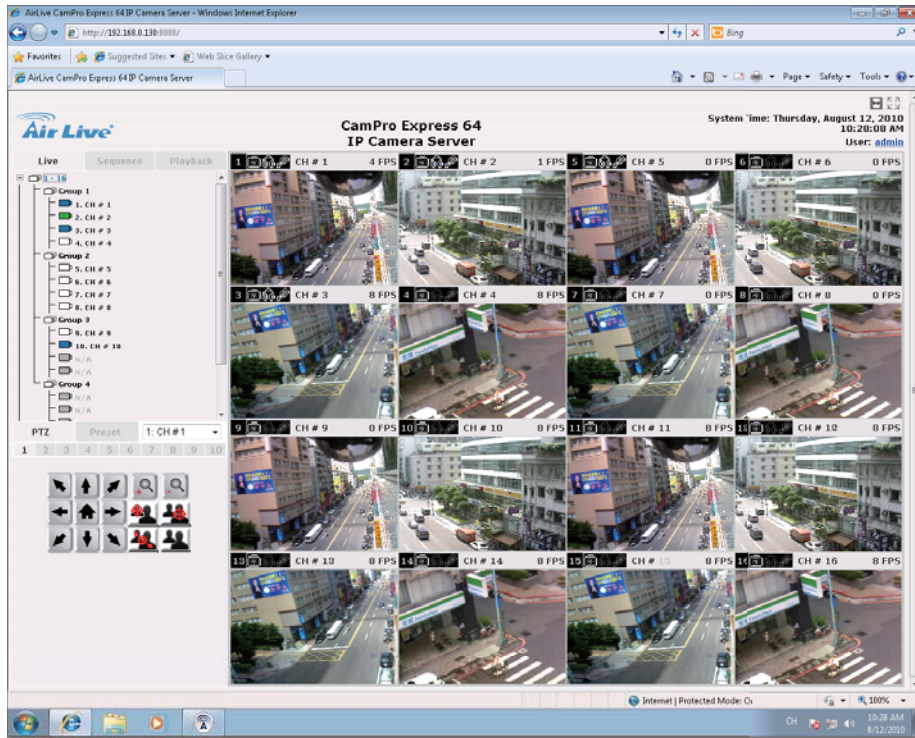
Live View E-Map

The CamPro Express 64 support live view E-Map, when motion detection function was enabled. The live video of the camera will pop up on the map when some event is triggered.



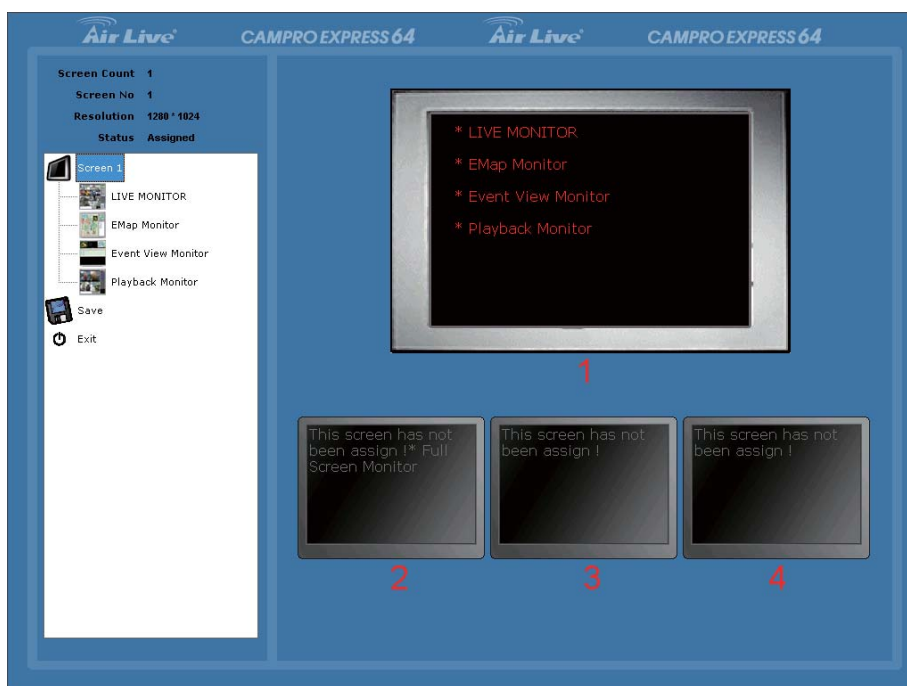
Remote Live View

The CamPro Express allows you to monitor 64 channels via the computer and WEB UI. You can also choose to view the different camera in single view or 1/4/9/16/32/64 view over internet.

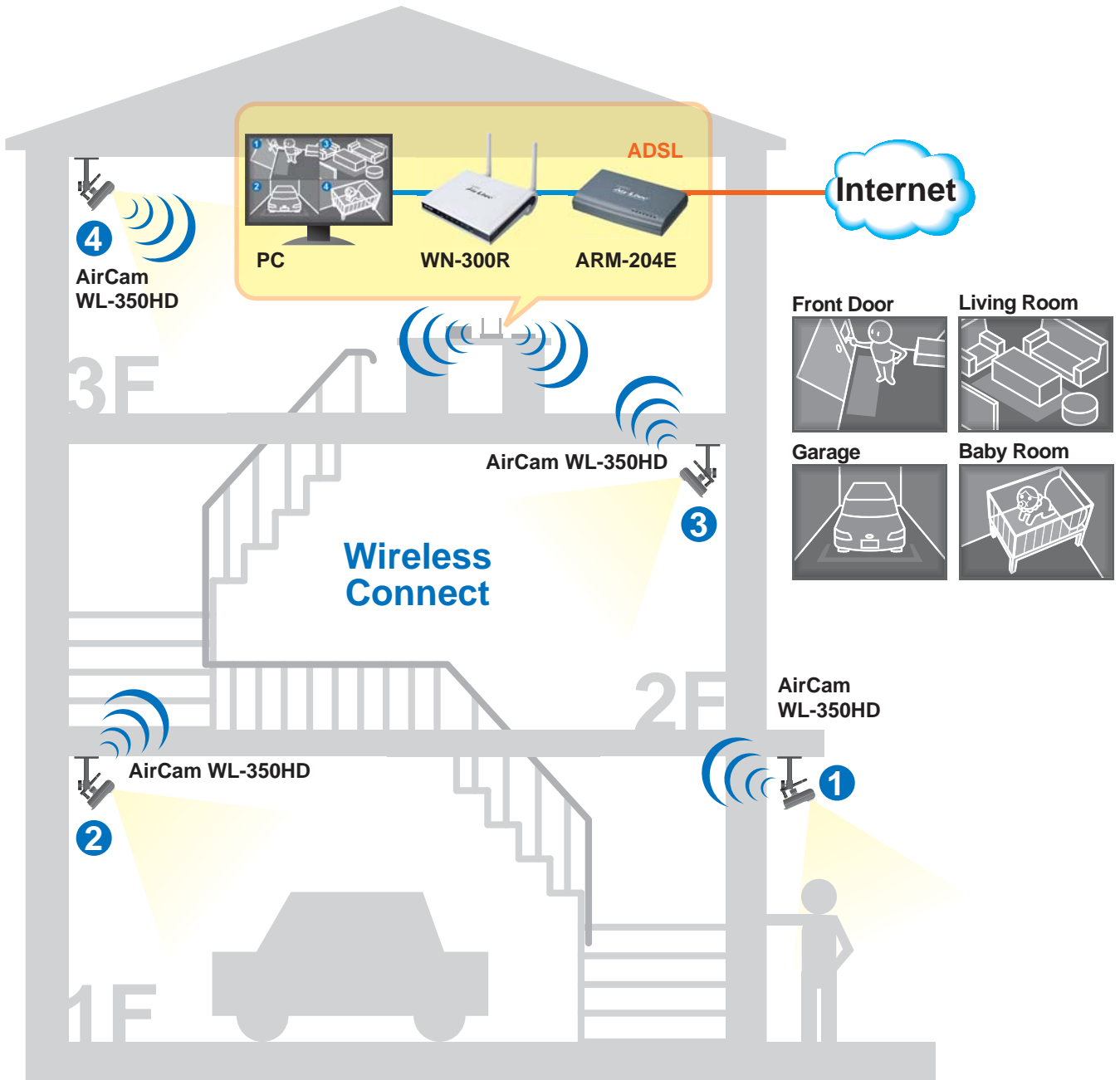


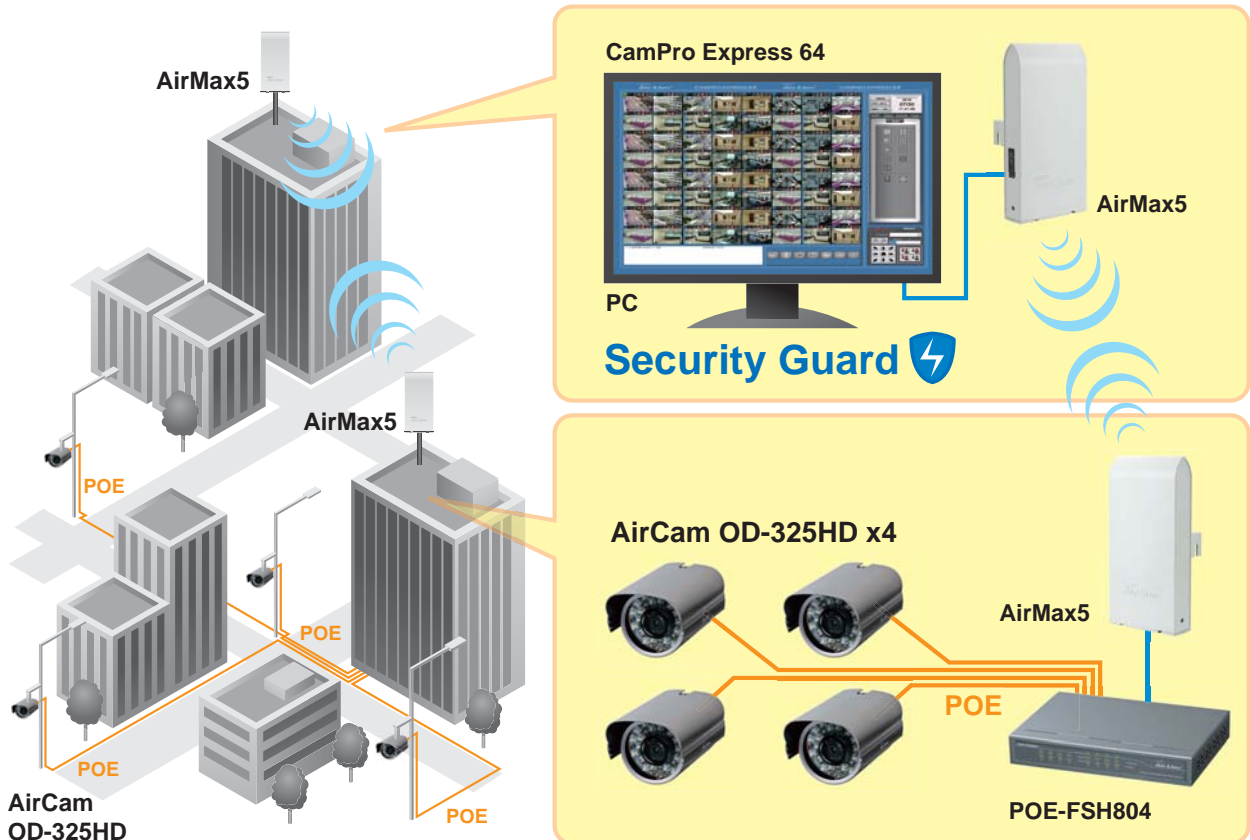
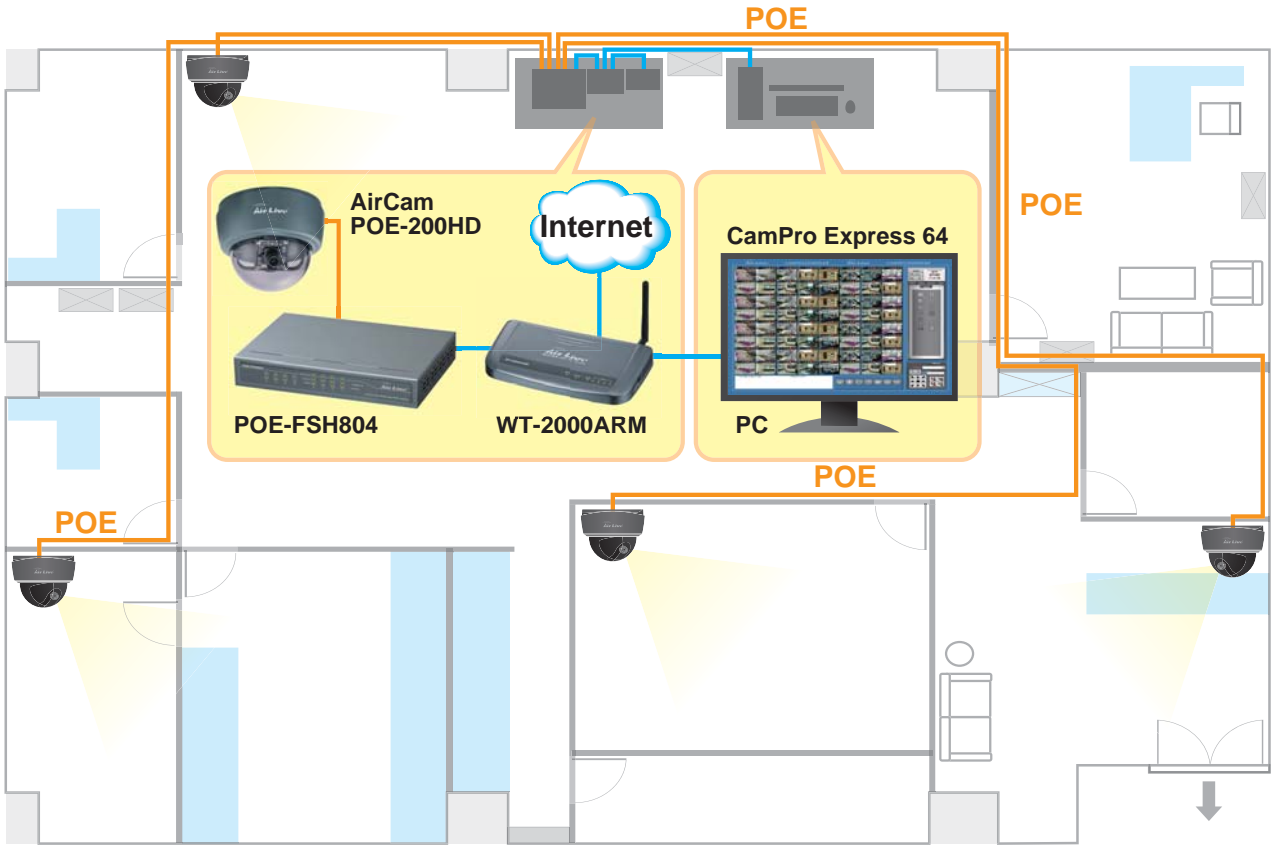
Support Multiple Monitor

CamPro Express 64 support up to 4 monitors. User could take one monitor for Live View, other monitor for the E-Map, Event View, Playback Monitor.



The CamPro Express 64 can be using in different environment. That can be using Airport, Shop, Office, Hallway, Basement, Elevator Environments.





Specifications

Camera

- Camera Install
Manual / Smart Camera Search
- Supported Channels
64
- Supported Brands
Axis/Sony/Panasonic/AirLive

Video

- Compression
MJPEG/MPEG-4 Part 2/H.264
- Resolution
1.3 MegaPixel/VGA/CIF/QCIF
- Max. Frame Rate
UP to 30 fps per Channel (total frame rate depends on CPU)

Audio

- Compression
G.711/G.726
- Two way audio

Live View

- Display mode
Live View/E-Map View/Event View/Playback/Full Screen
- Multi-Monitors
Up to four monitors can be automatically detected for viewing different function windows simultaneously
- Split Screen
1/4/6/9/13/16/25/36/64
- Full Screen
Up to 8x8, 1 screen
- Sequence Mode
Sequence All/1/4/6/9/13/16 split view/Group withConfigurable timer
- Snapshot
Video snapshot in JPEG format
- E-Map
Dual Layer E-Map Display (main map and its sub-maps). Live video display on map
- Motion Detection
- PTZ Function
Virtual PTZ Panel/Mouse-over-video PTZ/ AutoPan/Preset Point

Web Live View

- Display mode
Live View/Playback/Full Screen
- Split Screen
1/4/16
- Sequence Mode
1/4/16 split view with configurable timer
- Snapshot
Video snapshot in JPEG format
- PTZ Function
Virtual PTZ Panel/Auto Pan/Preset Point

Remote Playback

- Split Screen
1/4
- Search Method
Start Time/Interval/Event/Recent Event
- Playback control
Play/Pause/Stop/Forward/Reverse/

System Configuration

- Recording path
Max. 8
- Audio/video Backup
AVI
- Configuration
Backup/Restore

Recording

- Recording Mode
Manual/Continuous/Scheduling/Event
- Scheduling Types
Full customized on 15 min.

Triggers & Events

- Motion Detection
Smart Motion Detection
- Camera Tempering Detection
- Digital Input
Receive trigger from camera's input
- Event Recording
Pre/Post Event Settings
- Event Notifications
On-Screen Alert/On-screen Motion Display/Mail/ FTP/Configurable Alert Sound/Record

Network

- Protocols
HTTP/SMTP/DHCP/DNS/UPnP/FTP
- Streaming Protocols
Depend on the supported cameras

User Management

- Management
User/Group
- User/Group
Up to 7 Group (Administrator/User Define * 6)
- Privileges
Live View/Playback/System Configurations/PTZ

Log Type

- Alert/Event/User Access

Language

- English/German/Polish/ Trad. Chinese/ Simp. Chinese/ Japanese/Spain/Português/Česky/ Slovensky/

System Requirement

- Min. Hardware Requirement
CPU: Intel Core 2 Duo or above
RAM: Minimum 1GB or above is recommended
HDD: 200GB or above
Graphic Card: Independant graphic card with DirectX9.0c or higher
Network: 100 Megabit Network Interface or above
- Min. Software Requirement
Windows XP SP2, Windows Vista, Windows 2003, Windows 7 (32 bit),IE7 or above

Ordering Information:

AirLive CamPro Express 64 64CH IP Camera Management Software