



CMS

**Central Monitoring System
for CoreNVR 9/16**

User's Manual



www.airlive.com

Table of Contents

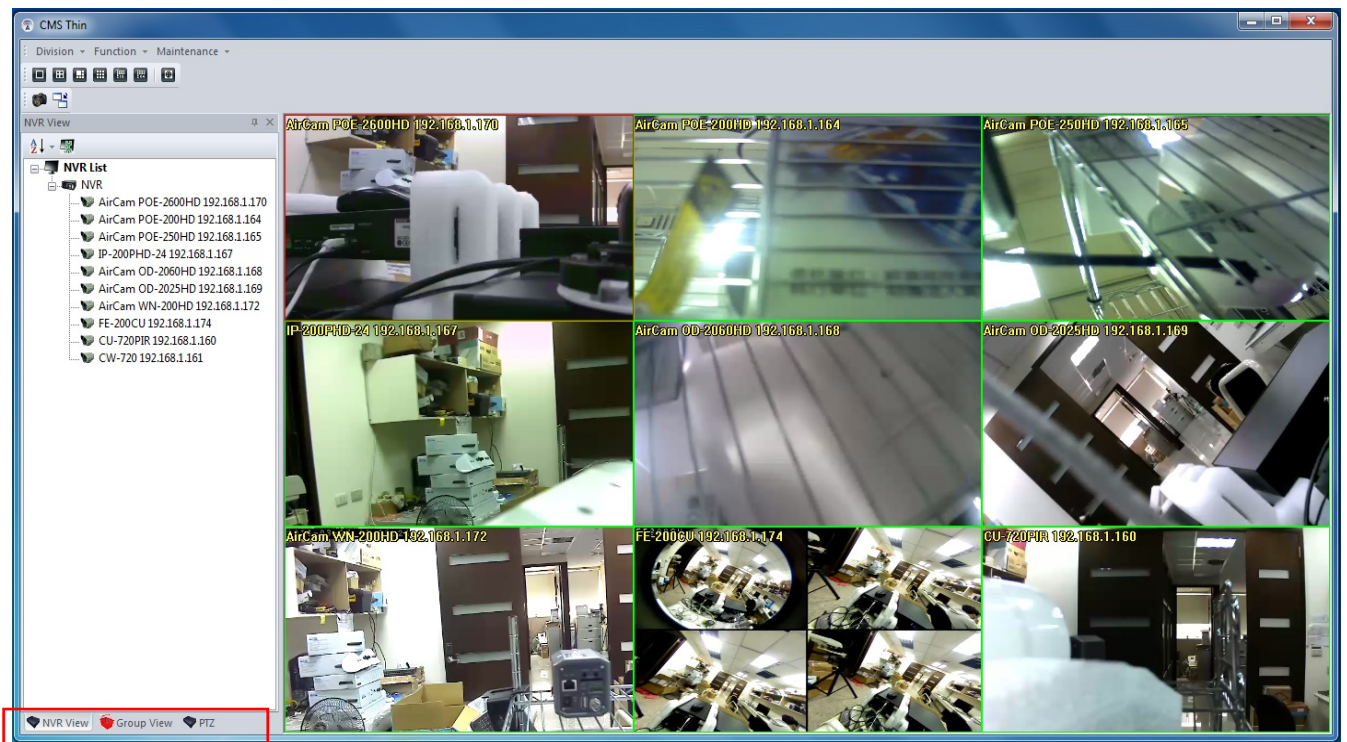
1. Main Console	1
1.1 Screen Division	2
1.2 NVR List	3
1.3 Group List	5
1.4 PTZ panel	6
1.5 Operation with sub-screen	7
1.5.1 Switch display channel position in division sub screen	7
1.5.2 Snapshot all	8
1.5.3 Change display channel	8
1.5.4 Switch divisions	9
1.5.5 Digital Zoom	9
1.5.6 Snapshot one	9
1.5.7 Full Screen	10
1.5.8 Restore Division Default	10
1.6 Function menu	10
1.7 Maintenance menu	11
1.8 NVR Management Dialog	13
1.9 NVR Channel Management Dialog	15
1.10 Group Management Dialog	17
1.11 Group Channel Management Dialog	18
1.12 NVR Remote UI control Dialog	19
2. Playback	21
2.1 Screen Division	22
2.2 Playback Functions	23
2.2.1 Search	23
2.2.2 Backup	24
2.2.3 Convert To AVI	25
2.2.4 Audio	26
2.2.5 Snapshot (Snapshot all)	27
2.2.6 Information Setting	27
2.3 Maintenance	28
2.4 Playback control button(s)	28
2.5 Operation with sub-screen	29
2.6 Motion Search	31
2.7 Sequential Search	32

2.7.1 Define search time period:	33
2.7.2 Start search and rollback:	34
2.7.3 Detail window for snapshots:	34
2.7.4 Preview mode of search result:.....	34

1

Main Console

This is the main control panel of CMS, to provide live stream preview, system setup, playback, snapshot, and PTZ controls.



Please Switch control panel at here.

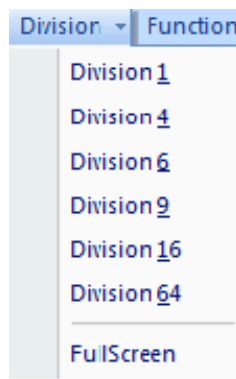
1.1 Screen Division

You could switch screen division by these ways as below.



- **Division Menu:**

Click on “Division” on the menu bar, and select the new division that you need.



- **Division Buttons:**

Click on the division button to switch new division.

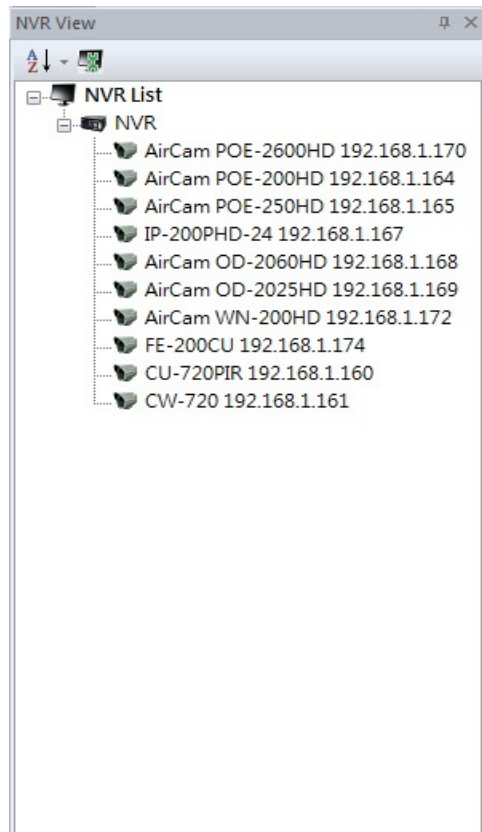


- **Popup Menu of sub-screen:**

Click mouse right button on the sub-screen, and select a new division form the “Division” sub-menu.

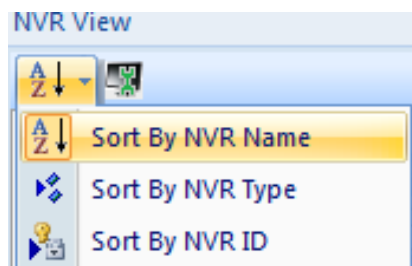
1.2 NVR List

List NVR and their cameras, you could connect them or go to NVR setting page from here.



- **Sort NVR List:**

Click on the sort button, and select a sort rule form then menu.

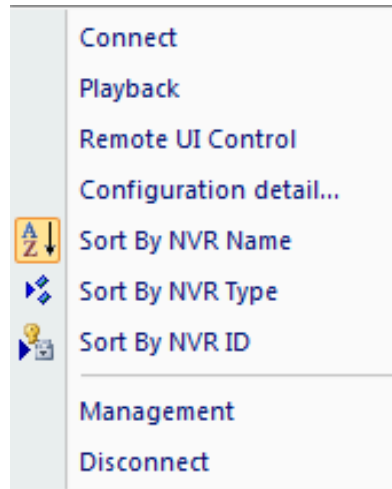


- **NVR Management:**



Go to the "NVR Management" Setting page.

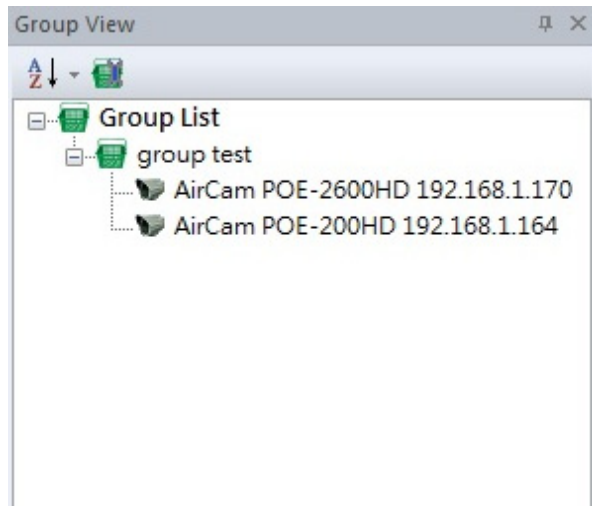
- **Sub Menu of NVR List:**



- **Connect:**
Connect to the selected NVR to preview live streaming.
- **Playback:**
Bring the playback application up.
- **Remote UI Control:**
Bring up the remote NVR's UI control dialog.
- **Configuration Detail:**
Bring up the IE browser to setting with NVR.
- **Sort NVR List:**
Sort the NVR List by name or type and ID.
- **Management:**
Go to the "NVR Management" Setting page.
- **Disconnect:**
Disconnect between NVR.

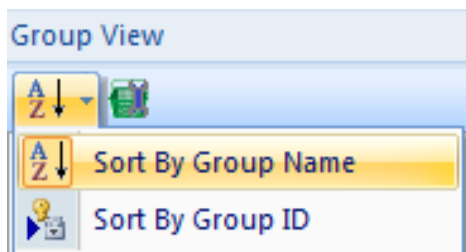
1.3 Group List

List Groups and their cameras, you could connect them or go to Group setting page from here.



- **Sort Group List:**

Click on the sort button, and select a sort rule from then menu.



- **Group Management:**



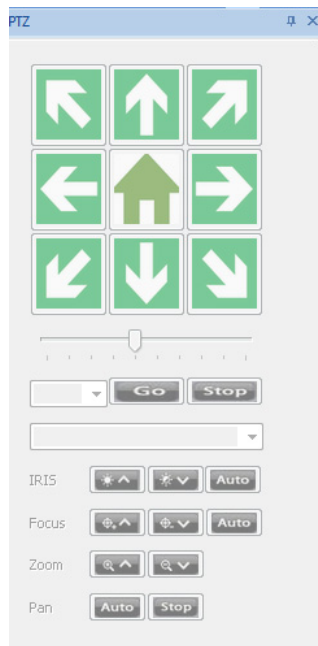
Go to the “Group Management” Setting page.


- **Sub Menu of Group List:**



- **Connect:**
Connect to the selected Group to preview live streaming
- **Playback:**
Bring the playback application up.
- **Sort Group List:**
Sort the Group List by name or type and ID.
- **Management:**
Go to the “Group Management” Setting page.
- **Disconnect:**
Disconnect with Group.

1.4 PTZ panel



- **Pan /Tilt:**
Move PTZ camera direction by click direction buttons.
Click  to make camera return home position.
Move the thumb to left to make slower, move to right to make move faster.



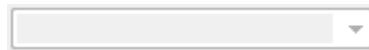
- **Tour:**

Select a tour setting from combo box, and click “go” button to start tour, click “Stop” button to stop tour.



- **Preset:**

Select a preset position from combo box; camera will move to preset position after click.



- **IRIS:**

Adjust camera’s IRIS setting, or set it to auto.



- **Focus:**

Adjust camera’s focus setting, or set it to auto.



- **Zoom:**

Zoom-in or zoom-out focus camera.



- **Pan:**

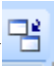
Begin camera auto pan or stop.




1.5 Operation with sub-screen

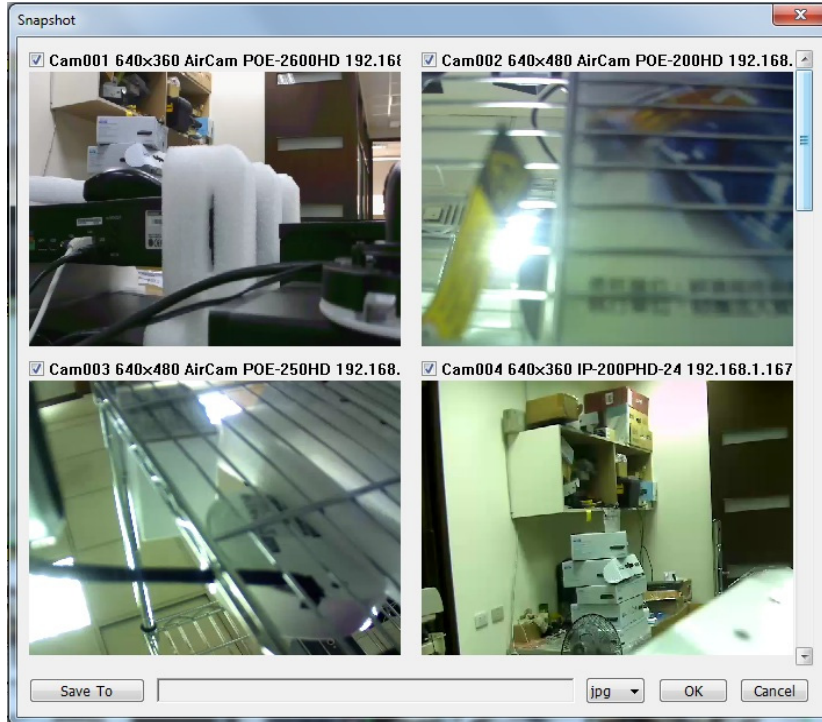
Click mouse right button and select the operation from popup menu, some functions have quick link button on main console, and you could call the functions from buttons too.

1.5.1 Switch display channel position in division sub screen

In “Switch Window” status () , you could hold mouse left button on a channel, and drag it to another channel, these two channels will switch position each other.

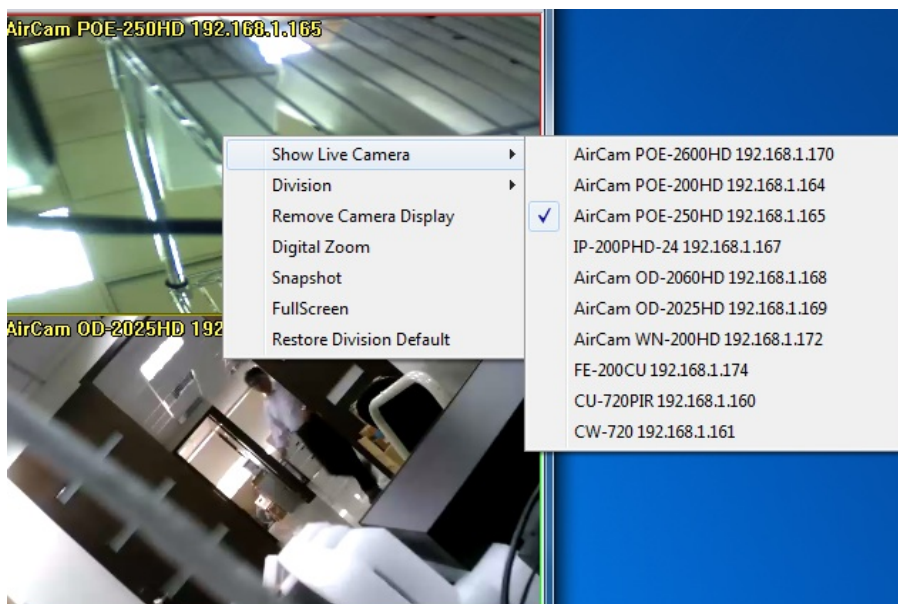
1.5.2 Snapshot all

Click snapshot button , system will approach snapshot all dialog, select the images that you need, and select save path.



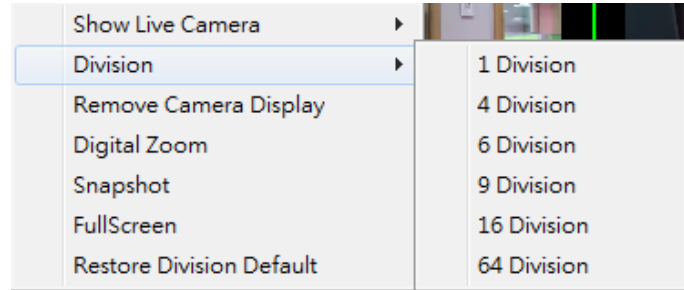
1.5.3 Change display channel

Click mouse right button, move cursor to "Show Live Camera", and select a new camera form list, the current channel will change to selected camera.



1.5.4 Switch divisions

Click mouse right button, move cursor to “Division” item, and select a new division type.



1.5.5 Digital Zoom

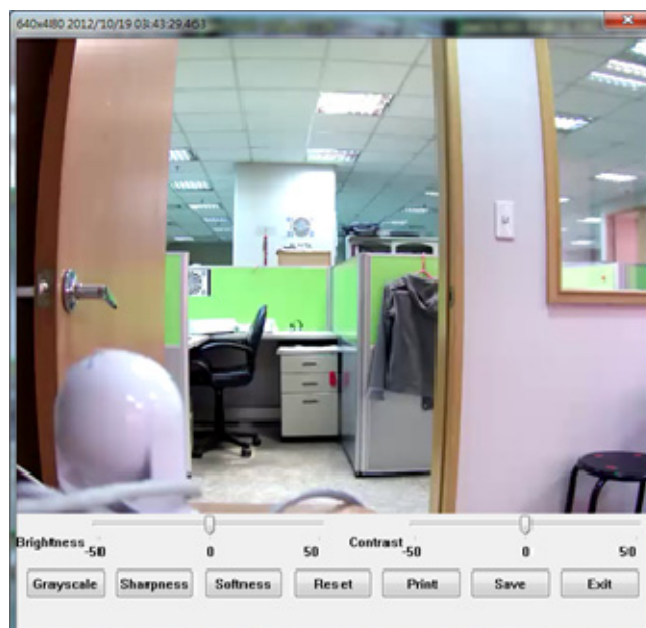
Switch to digital zoom enable status, and scroll mouse wheel in focus channel, scroll forward for zoom-in, scroll backward for zoom-out, you could hold mouse left button on the channel, and then move cursor to move the display area

Enable the digital zoom status, you could click on  button, it will switch to  button, that means in digital zoom enable now.

Or you could select the “Digital zoom” item on the popup menu, to enable or disable digital zoom.

1.5.6 Snapshot one

Click mouse right button on the focus channel, select the “Snapshot” item, system will snapshot current image and approach snapshot dialog, you could modify the snapshot then save to assigned path.



1.5.7 Full Screen

Switch full screen mode from popup menu's "Full Screen" item.

1.5.8 Restore Division Default

Select the "Restore Division Default" item on the popup menu, all sub screen channel will restore to default channels.

1.6 Function menu

Click on the "Function" item on the menu bar, and select a function.

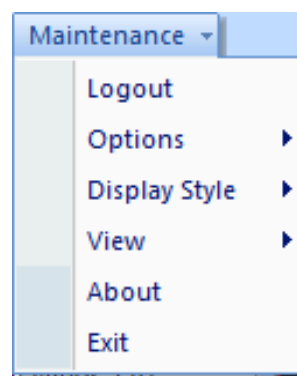


- **Disconnect:**
Disconnect current connection with NVR or Group.
- **NVR Management:**
Approach the NVR Management setting dialog.
- **NVR Channel Management:**
Approach the NVR's channels Management setting dialog.
- **NVR Connect:**
Connect to current selected NVR.
- **NVR Playback:**

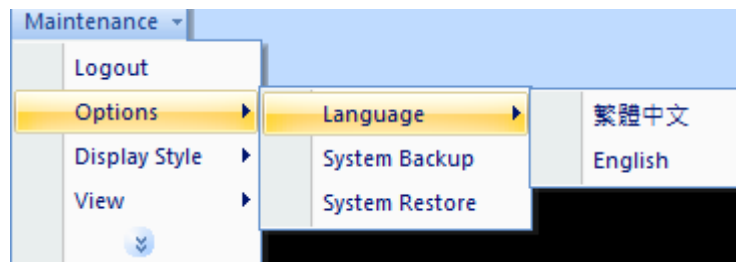
Approach current selected NVR's Playback.

- **NVR Remote UI Control:**
Approach the Remote UI Control dialog with current selected NVR.
- **NVR Configuration detail:**
Connect to NVR's web service via IE browser.
- **Group Management:**
Approach the Group Management setting dialog.
- **Group Channel Management:**
Approach the Group's channels Management setting dialog.
- **Group Connect:**
Connect to current selected Group.
- **Group Playback:**
Approach current selected Group's Playback.
- **User Management:**
Approach the User Management setting dialog.

1.7 Maintenance menu



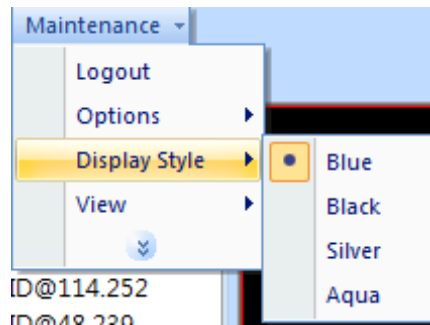
- **Login / Logout:**
Login the system or Logout with current login user.
- **Options:**
 - **Language:** Switch current displayed language from list.



- **System Backup:** Backup CMS setting files to assigned path.
- **System Restore:** Restore backup setting file from assigned path.

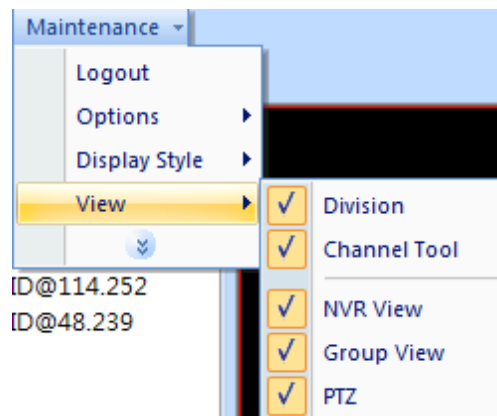
- **Display Style:**

Switch current display style from list.



- **View:**

Select which toolbar items will show or hide.



- **About:**

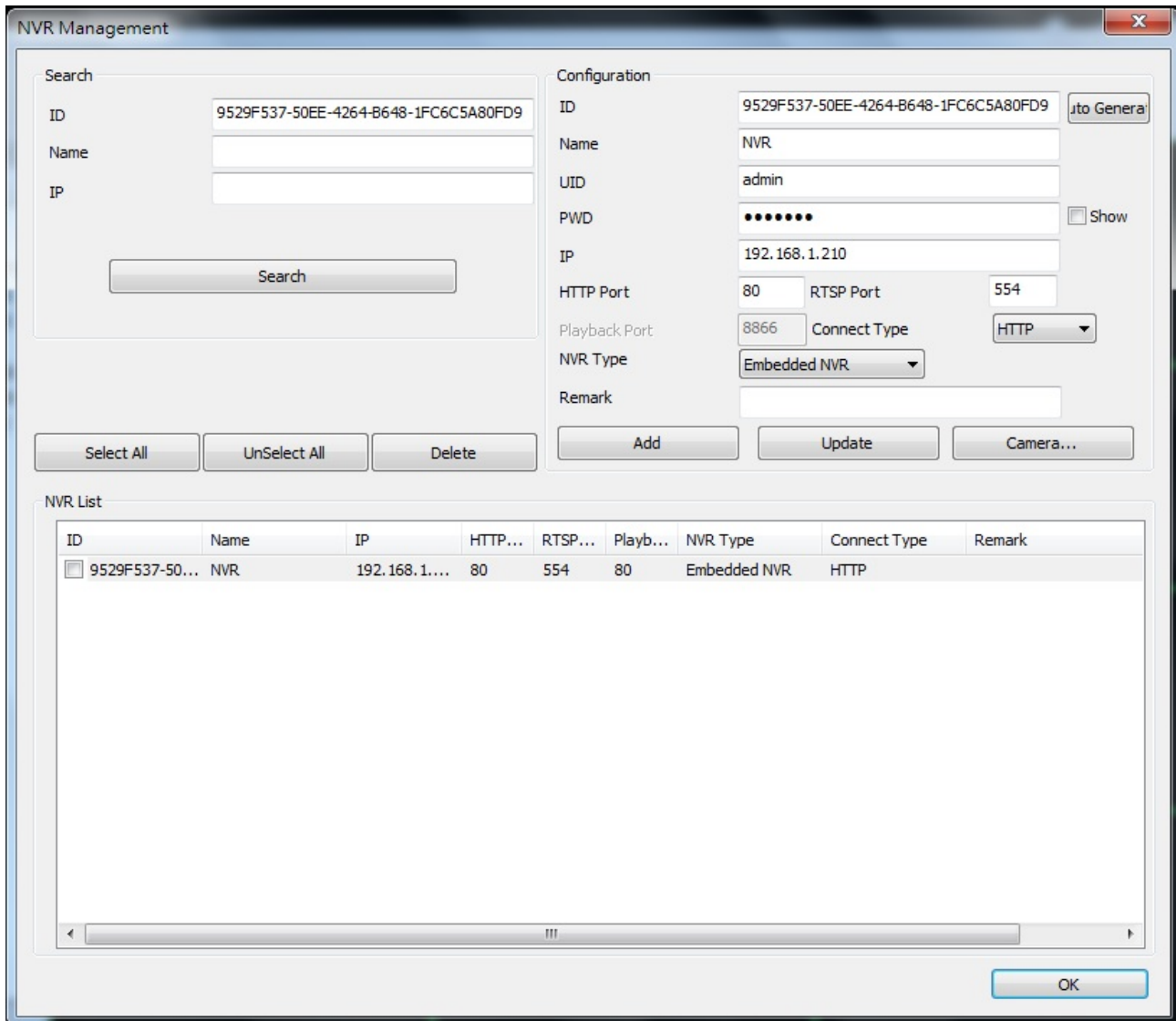
Show the CMS's "About" information.

- **Exit:**

Leave the CMS.

1.8 NVR Management Dialog

Management NVR's setting at here.



Search

ID: 9529F537-50EE-4264-B648-1FC6C5A80FD9
 Name:
 IP:

Configuration

ID: 9529F537-50EE-4264-B648-1FC6C5A80FD9
 Name: NVR
 UID: admin
 PWD: Show
 IP: 192.168.1.210
 HTTP Port: 80 RTSP Port: 554
 Playback Port: 8866 Connect Type: HTTP
 NVR Type: Embedded NVR
 Remark:

NVR List

ID	Name	IP	HTTP...	RTSP...	Playb...	NVR Type	Connect Type	Remark
<input type="checkbox"/> 9529F537-50...	NVR	192.168.1....	80	554	80	Embedded NVR	HTTP	

- **Search:**

Key in the search filters to “ID”, “Name”, and “IP” fields, then click the “Search” button, system will display the search result in “NVR List” table.

If you have many NVR, maybe you should set filter to find out the NVR that you need to management.

If you search without and filter rule, system will show all NVR from database.

- **NVR List:**

Display search result with filter, select a NVR from list to modify NVR's settings.

- **Select all:** Click "Select All" button will select all NVR in the list.
- **Unselect all:** Cancel all selected NVR in the list.
- **Delete:** Click "Delete" button will remove all selected NVR from database.

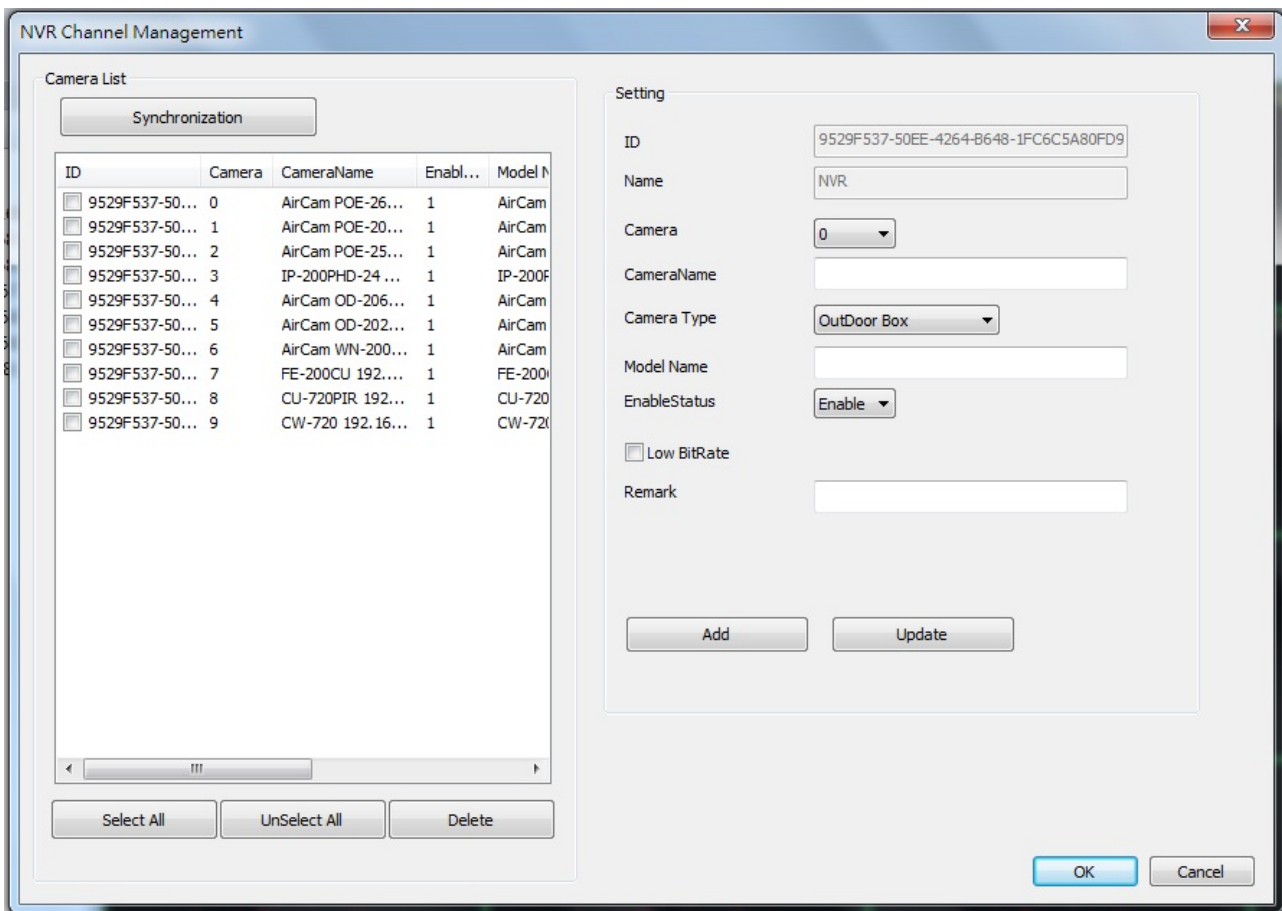
- **Configuration:**

- **ID:** Key in NVR's ID, or click on "Auto Generate" button to get a random ID.
- **Name:** Key-in the NVR's Name.
- **UID:** The User ID for login NVR.
- **PWD:** Key-in the password to login NVR, if you need confirm password by current string, you could check the "Show" check box.
- **IP:** Key-in the NVR's IP address.
- **HTTP Port:** Key-in the NVR's HTTP port number, default is 80.
- **RTSP Port:** Key-in the NVR's RTSP port number, default is 554.
- **Playback Port:** Key-in the NVR's Playback port number; only SecuGuard need set this port, default is 8866.
- **Connect Type:** Select a connection type form the combo box.
- **NVR Type:** Select the NVR type from the combo box.
- **Remark:** Key-in the remark about this NVR.
- **Add button:** After key-in all NVR's information, click "Add" button to add to database, the NVR ID must be exclusive.

- **Update Button:** After modify selected NVR's information, click "Update" button to save new setting to database.
- **Camera Button:** Approach NVR Channel Management Dialog.

1.9 NVR Channel Management Dialog

● Camera List:



Camera List

Synchronization

ID	Camera	CameraName	Enabl...	Model N
<input type="checkbox"/> 9529F537-50...	0	AirCam POE-26...	1	AirCam
<input type="checkbox"/> 9529F537-50...	1	AirCam POE-20...	1	AirCam
<input type="checkbox"/> 9529F537-50...	2	AirCam POE-25...	1	AirCam
<input type="checkbox"/> 9529F537-50...	3	IP-200PHD-24 ...	1	IP-200F
<input type="checkbox"/> 9529F537-50...	4	AirCam OD-206...	1	AirCam
<input type="checkbox"/> 9529F537-50...	5	AirCam OD-202...	1	AirCam
<input type="checkbox"/> 9529F537-50...	6	AirCam WN-200...	1	AirCam
<input type="checkbox"/> 9529F537-50...	7	FE-200CU 192...	1	FE-200
<input type="checkbox"/> 9529F537-50...	8	CU-720PIR 192...	1	CU-720
<input type="checkbox"/> 9529F537-50...	9	CW-720 192.16...	1	CW-720

Select All UnSelect All Delete

Setting

ID: 9529F537-50EE-4264-B648-1FC6C5A80FD9

Name: NVR

Camera: 0

CameraName:

Camera Type: OutDoor Box

Model Name:

EnableStatus: Enable

Low BitRate

Remark:

Add Update

OK Cancel

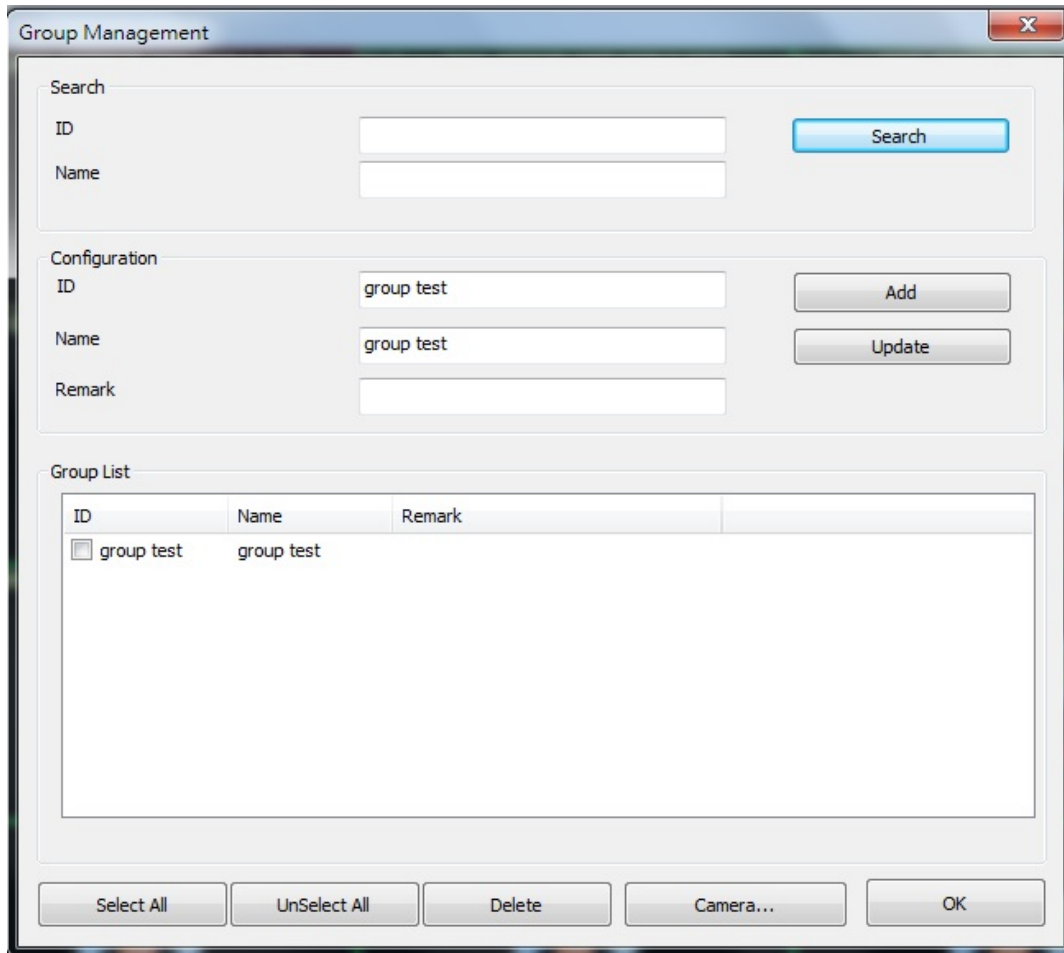
- **Synchronization Button:** Synchronize the camera setting between CMS and NVR.
- **Channel List table:** List all cameras of current NVR.
- **Select All Button:** Select all cameras in the list.
- **Unselect All Button:** Unselect all cameras in the list.
- **Delete Button:** Delete all selected camera in the list.

- **Setting:**

- **ID:** Display NVR's ID.
- **Name:** Display NVR's Name.
- **Camera:** Set the camera's number of NVR.
- **Camera Name:** Set the Camera's name.
- **Camera Type:** Select the camera's type from combo box, the different camera type will display different icon in main console.
- **Model Name:** Set the camera's model name.
- **Enable Status:** Enable or disable this camera, CMS will connect the camera if is enabled, otherwise not.
- **Low Bit-rate:** Enable "Low bit-rate" will get smaller streaming data, otherwise not. You should enable it for get better performance.
- **Remark:** Set the camera's description.
- **Add Button:** After key-in all cameras' setting, click the Add button to add it to database.
- **Update Button:** After modify the setting of current camera, click the "Update" button to save to database.

1.10 Group Management Dialog

Management Group's setting at here.



The screenshot shows a 'Group Management' dialog box with the following sections:

- Search:** Fields for 'ID' and 'Name', and a 'Search' button.
- Configuration:** Fields for 'ID' (containing 'group test'), 'Name' (containing 'group test'), and 'Remark'. Buttons for 'Add' and 'Update' are present.
- Group List:** A table with columns 'ID', 'Name', and 'Remark'. It contains one row: 'group test'.
- Bottom Buttons:** 'Select All', 'UnSelect All', 'Delete', 'Camera...', and 'OK'.

- **Search:**

Key in the search filters to "ID", "Name" fields, then click the "Search" button, system will display the search result in "Group List" table.

If you have many groups, maybe you should set filter to find out the Group that you need to management.

If you search without and filter rule, system will show all Group from database.

- **Group List:**

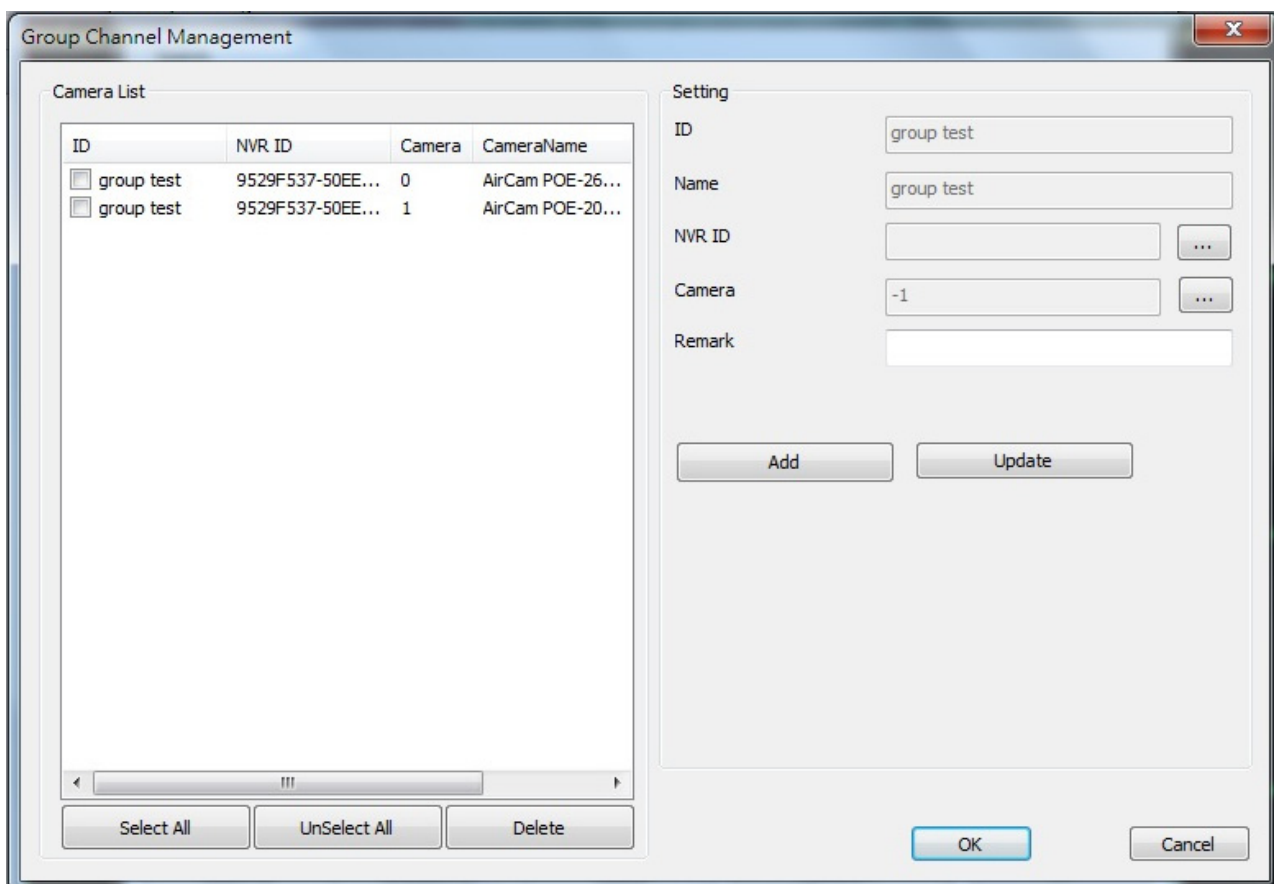
Display search result with filter, select a Group from list to modify Group's settings.

- **Select all:** Click "Select All" button will select all Groups in the list.
-
- **Unselect all:** Cancel all selected Groups in the list.
-
- **Delete:** Click "Delete" button will remove all selected Groups from database.

● **Configuration:**

- **ID:** Key in NVR's ID, or click on "Auto Generate" button to get a random ID.
- **Name:** Key-in the NVR's Name.
- **Remark:** Set the Group's description.

1.11 Group Channel Management Dialog



● **Camera List:**

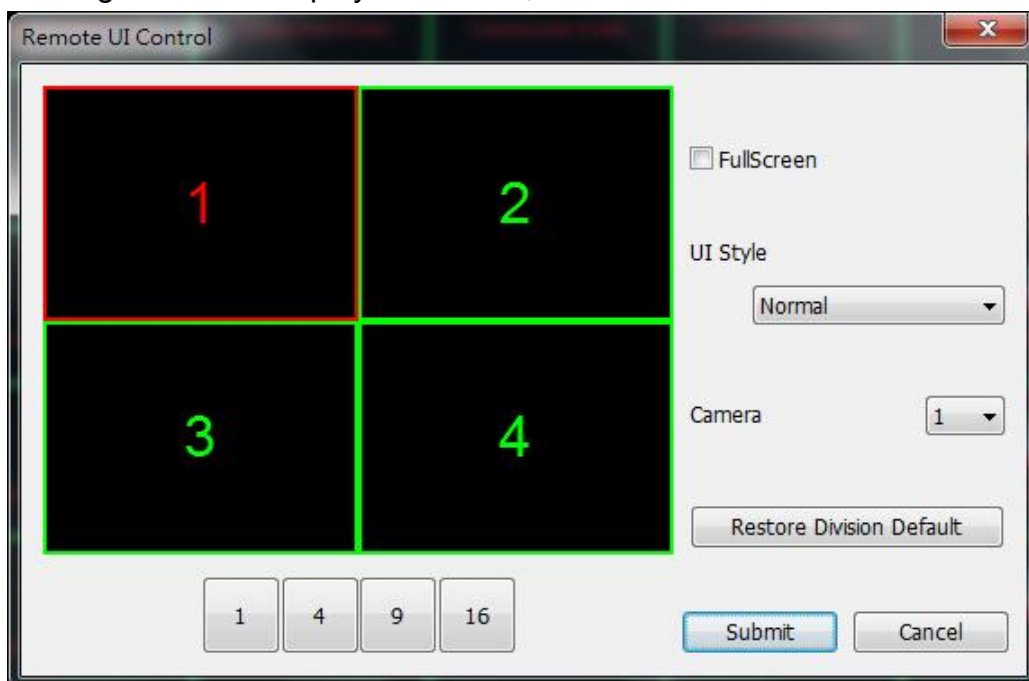
- **Channel List table:** List all cameras of current Group.
- **Select All Button:** Select all cameras in the list.
- **Unselect All**
- **I Button:** Unselect all cameras in the list.
- **Delete Button:** Delete all selected camera in the list.

● **Setting:**

- **ID:** Display Group's ID.
- **Name:** Display Group's Name.
- **NVR ID:** Click the “...” button to select a exist NVR, and the selected NVR ID will display in this filed.
- **Camera:** Click the “...” button to select an existed NVR's camera, and the selected camera number will display in this filed.
- **Remark:** Set the camera's description.
- **Add Button:** After key-in all settings, click the Add button to add it to database.
- **Update Button:** After modify the setting of current camera, click the “Update” button to save to database.

1.12 NVR Remote UI control Dialog

You could configure NVR's display UI at CMS, to be like a TV wall function.



● **Division:**

Switch NVR's division by click the “1”, “4”, “9”, “16” button.

- **Full Screen:**
Enable full screen by check the “Full Screen” check box.

- **UI Style:**
Select a UI style form the “UI Style” combo box.

- **Camera:**
 1. Click on the division widow to select a focus channel.
 2. Select a new camera number from “Camera” combo box.
 3. The focus channel’s camera number will become the selected number.

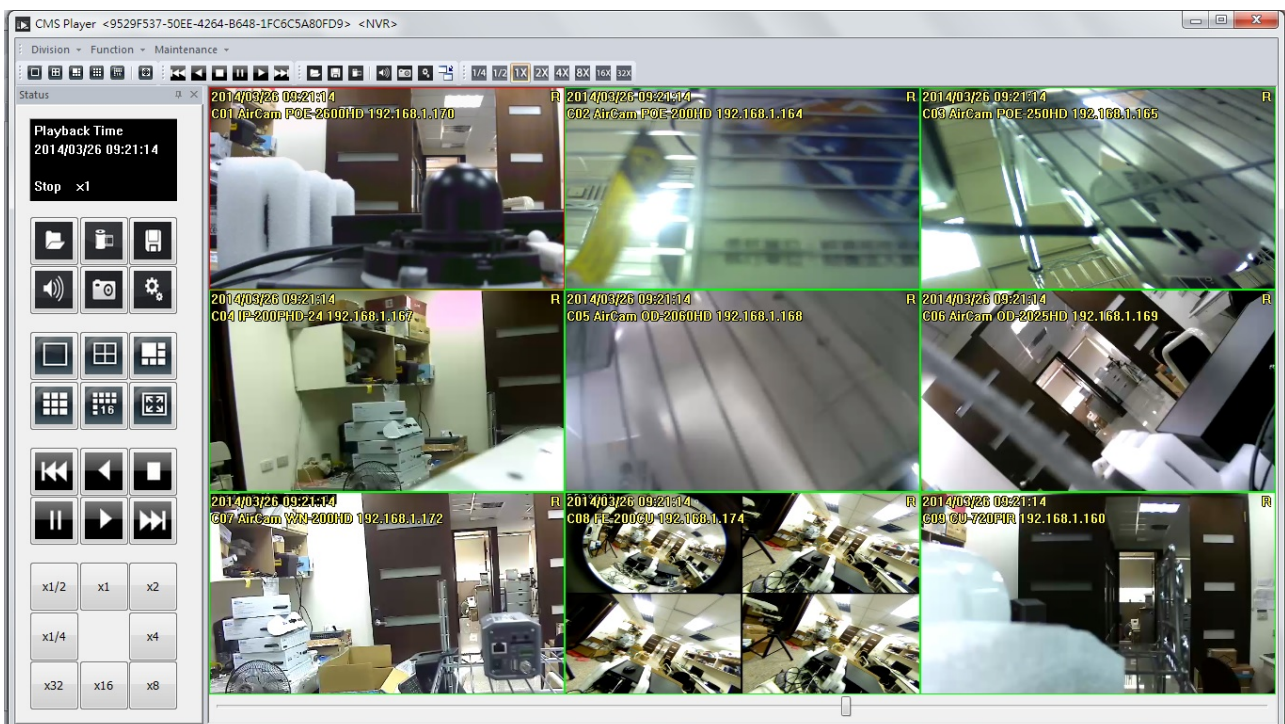
- **Restore Division Default button:**
Reset the division windows to default camera number.

- **Submit button:**
After you finish UI setting, click the “Submit” button to submit setting to the NVR, NVR will change style soon.

2

Playback

Playback is providing history record file(s)'s search, playback, and convert file format, backup period time functions.



- **NVR Playback:**

Select "NVR playback" from menu bar, or click right button on NVR and select "Playback" from popup menu.

If you are select NVR playback from menu bar, you should select a NVR to playback from search NVR dialog.

- **Group Playback:**

Select "Group playback" from menu bar, or click right button on Group and select "Playback" from popup menu.

If you are select Group playback from menu bar, you should select a Group to playback from search Group dialog.

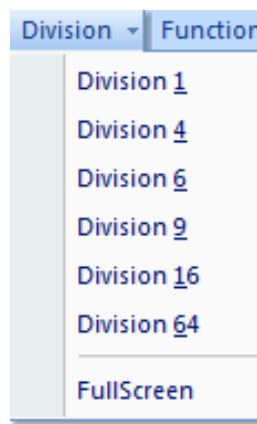
2.1 Screen Division

You could switch screen division by these ways as below.



- **Division Menu:**

Click on “Division” on the menu bar, and select the new division that you need.



- **Division Buttons:**

Click on the division button to switch new division.



Division 1 button.



Division 4 button.



Division 6 button.



Division 9 button.



Division 16 button.



Division 32 button.



Division 64 button.



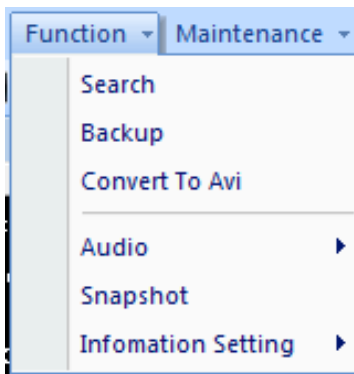
Full-Screen button.

- **Popup Menu of sub-screen:**


Click mouse right button on the sub-screen, and select a new division form the “Division” sub-menu.

2.2 Playback Functions

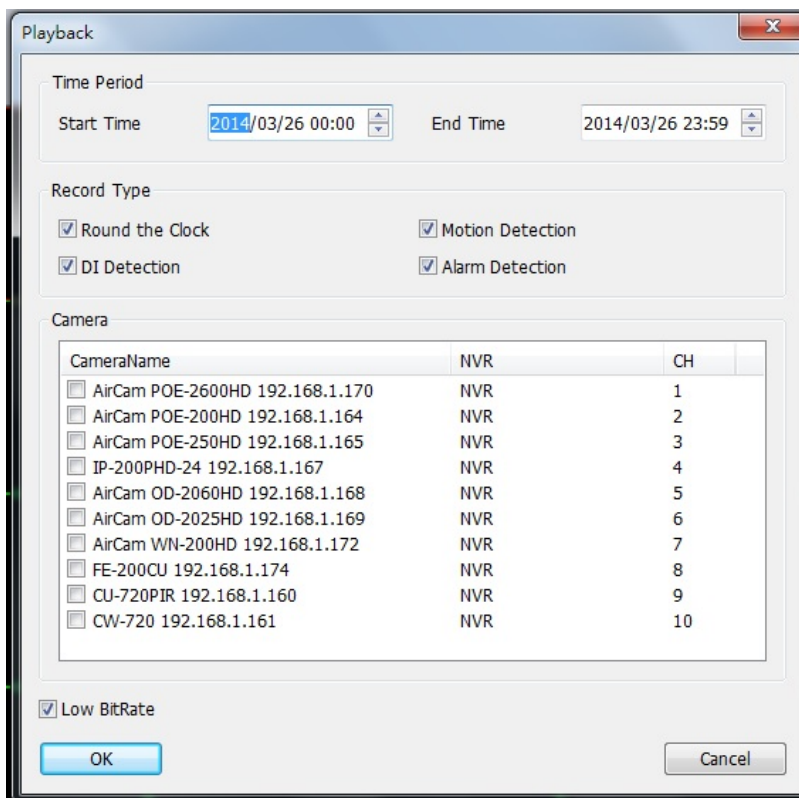
You could call the playback's functions from "Function" item of menu bar, or you could call the function by click on the button directly.



2.2.1 Search

Click the  button or select "Function" item from menu bar will approach search dialog to define playback time period.

Search Dialog



- **Time Period:**
 - **Start Time:** Select a start time for search.
 - **End Time:** Select an end time for search.


- **Record Type:**
Select which record types will be searched.

- **Camera:**
Select which cameras will be searched.

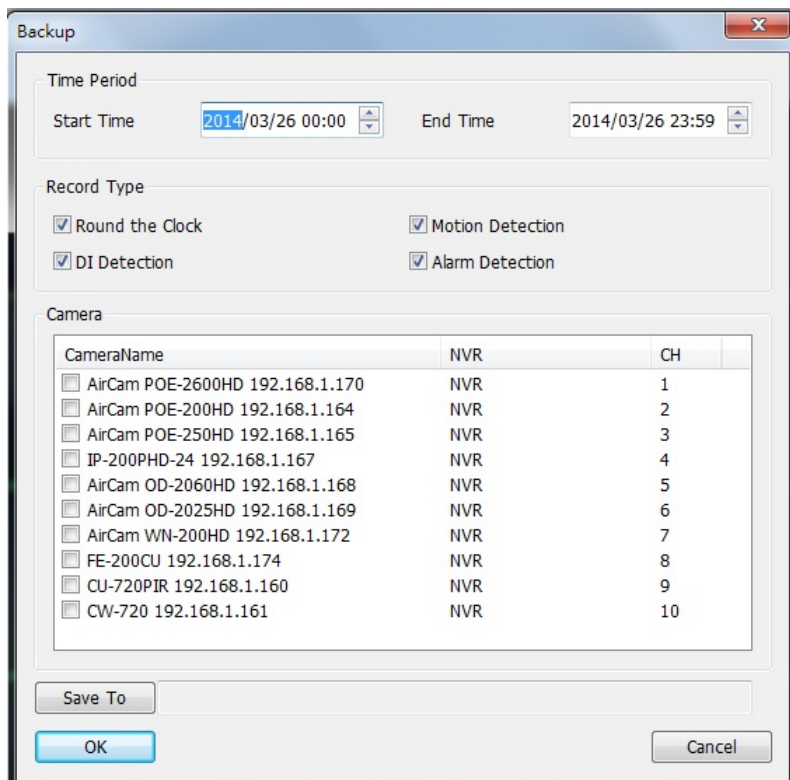
- **Low Bit rate:**
Enable “Low Bit Rate” if you need faster streaming, or PC can not decode too much channel.

2.2.2 Backup



Click the  button or select “Function” item from menu bar will approach search dialog to define playback time period.

Backup Dialog:



The Backup dialog box contains the following sections:

- Time Period:** Start Time: 2014/03/26 00:00, End Time: 2014/03/26 23:59
- Record Type:**
 - Round the Clock
 - Motion Detection
 - DI Detection
 - Alarm Detection
- Camera:**


CameraName	NVR	CH
<input type="checkbox"/> AirCam POE-2600HD 192.168.1.170	NVR	1
<input type="checkbox"/> AirCam POE-200HD 192.168.1.164	NVR	2
<input type="checkbox"/> AirCam POE-250HD 192.168.1.165	NVR	3
<input type="checkbox"/> IP-200PHD-24 192.168.1.167	NVR	4
<input type="checkbox"/> AirCam OD-2060HD 192.168.1.168	NVR	5
<input type="checkbox"/> AirCam OD-2025HD 192.168.1.169	NVR	6
<input type="checkbox"/> AirCam WN-200HD 192.168.1.172	NVR	7
<input type="checkbox"/> FE-200CU 192.168.1.174	NVR	8
<input type="checkbox"/> CU-720PIR 192.168.1.160	NVR	9
<input type="checkbox"/> CW-720 192.168.1.161	NVR	10

Buttons: Save To, OK, Cancel

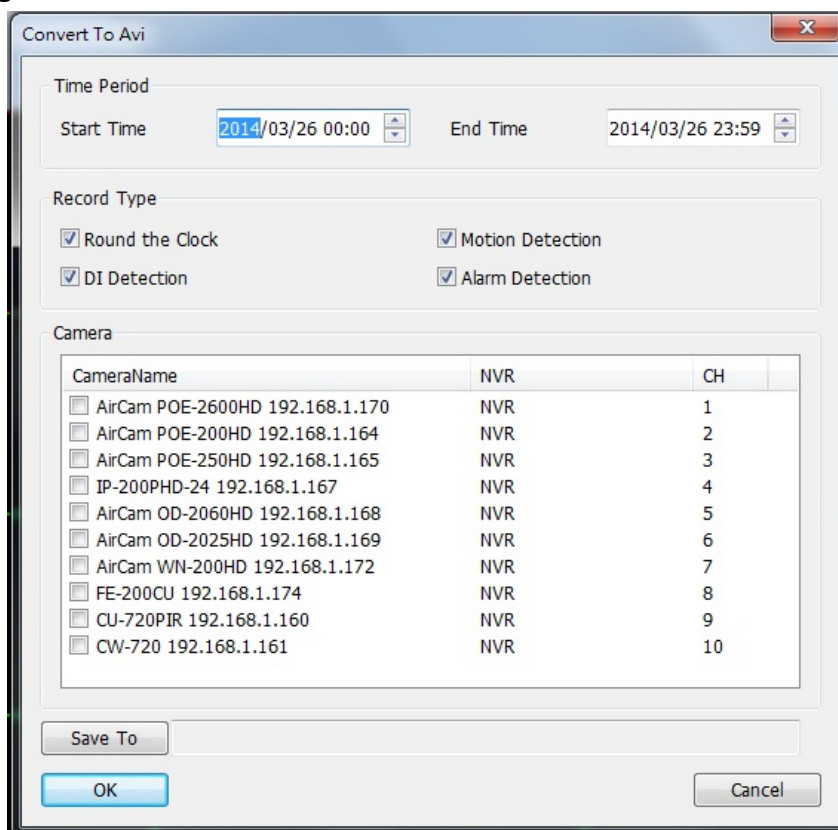
- **Time Period:**
 - **Start Time:** Select a start time for Backup.
 - **End Time:** Select an end time for Backup.
- **Record Type:**
Select which record types will be Backup.
- **Camera:**
Select which cameras will be Backup.
- **Save To:**
Select a path for output backup files.

2.2.3 Convert To AVI



Click the  button or select “Function” item from menu bar will approach search dialog to define playback time period.

Convert Dialog:



The screenshot shows the 'Convert To Avi' dialog box with the following settings:

- Time Period:** Start Time: 2014/03/26 00:00, End Time: 2014/03/26 23:59
- Record Type:** Round the Clock, Motion Detection, DI Detection, Alarm Detection
- Camera:** A list of cameras with checkboxes for selection:

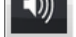
CameraName	NVR	CH
<input type="checkbox"/> AirCam POE-2600HD 192.168.1.170	NVR	1
<input type="checkbox"/> AirCam POE-200HD 192.168.1.164	NVR	2
<input type="checkbox"/> AirCam POE-250HD 192.168.1.165	NVR	3
<input type="checkbox"/> IP-200PHD-24 192.168.1.167	NVR	4
<input type="checkbox"/> AirCam OD-2060HD 192.168.1.168	NVR	5
<input type="checkbox"/> AirCam OD-2025HD 192.168.1.169	NVR	6
<input type="checkbox"/> AirCam WN-200HD 192.168.1.172	NVR	7
<input type="checkbox"/> FE-200CU 192.168.1.174	NVR	8
<input type="checkbox"/> CU-720PIR 192.168.1.160	NVR	9
<input type="checkbox"/> CW-720 192.168.1.161	NVR	10

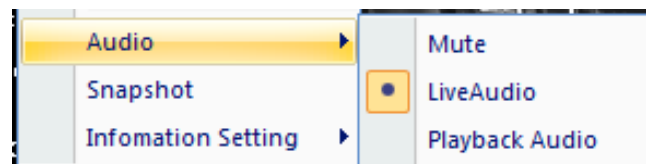
Buttons: Save To, OK, Cancel

- **Time Period:**
 - **Start Time:** Select a start time for Convert.
 - **End Time:** Select an end time for Convert.
- **Record Type:**
Select which record types will be Convert to AVI.
- **Camera:**
Select which cameras will be Convert to AVI.
- **Save To:**
Select a path for output Converted files.

2.2.4 Audio




Click  button, or select “Audio” item from menu bar, and select audio mode from the sub menu.



- **Mute:**
Mute the audio output.
- **Live Audio:**
Play the live audio, not the playback audio.
- **Playback Audio:**
Play the current playback audio.

2.2.5 Snapshot (Snapshot all)

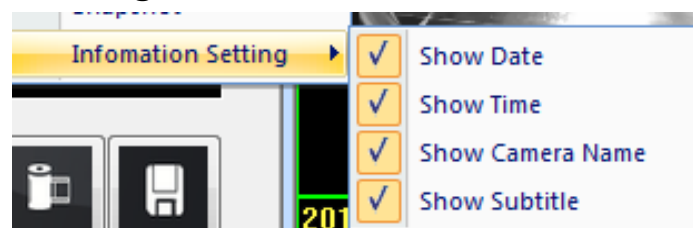
Click  button or select “Snapshot” item from menu bar, system will snapshot all channels, and show them on the snapshot dialog.

Check the picture’s check box that you need, and select a path to save these images.


You could save these pictures to Jpeg or bitmap format.



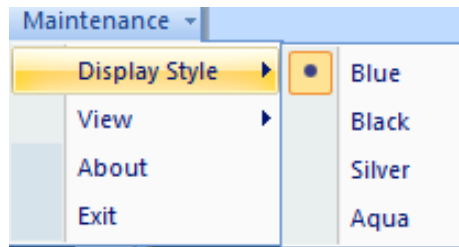
2.2.6 Information Setting



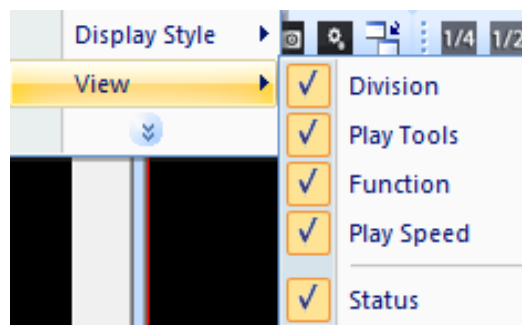
Setting for the information on the playback channel, enable the item means it will show on the channel when playback.

You could click  button to get “Information Setting” menu too.

2.3 Maintenance



- **Display Style:**
Select the display style for playback.
- **View:**
Enable which toolbars will be shown.



- **About:**
Show the playback version information.
- **Exit:**
Leave the playback.

2.4 Playback control button(s)



Play video forward.



Pause playing video.



Stop playing video.



Play video backward.



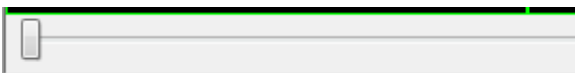
Seek to previous frame when on pause mode.



Seek to next frame when on pause mode.

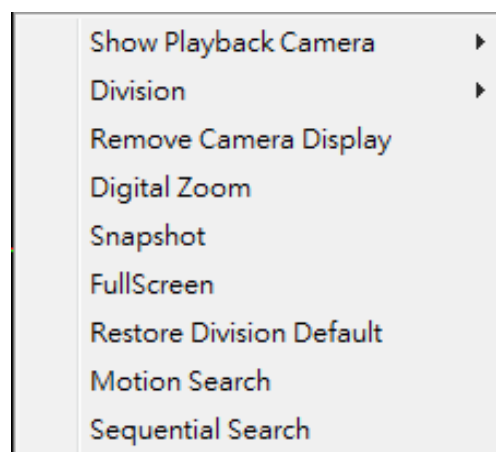


Change playback speed.



You could move the slider bar thumb at below to change current playback time.

2.5 Operation with sub-screen



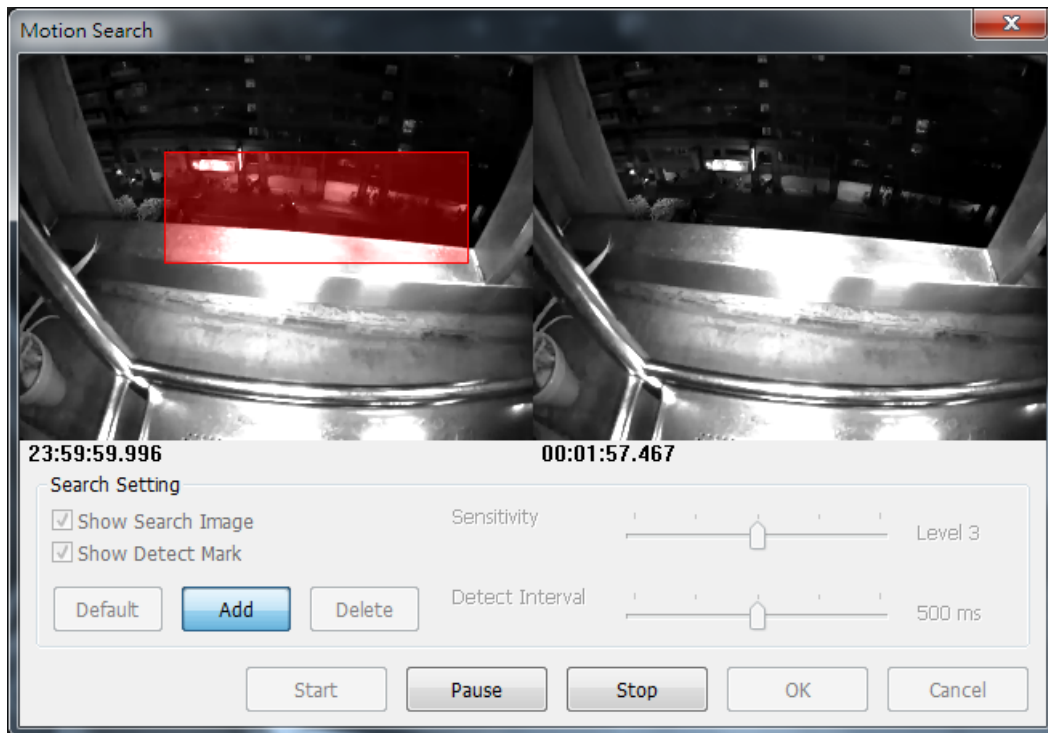
Click the mouse right button on the sub-screen, and then you could select these items to operate sub-screen.

- **Show Playback Camera:**
Change current channel to another camera.

- **Division:**
Switch sub-screen division mode.
- **Remove Camera Display:**
Remove current channel from playback list.
- **Digital zoom:**
Enable or disable digital zoom mode.
- **Snapshot:**
Snapshot current channel, and you could modify the snapshot picture from snapshot dialog.
- **Full Screen:**
Switch to Full screen or normal mode.
- **Restore Division Default:**
Reset all channel in division to default camera.
- **Motion Search:**
Approach the motion search dialog. Please refer to the “Motion Search” chapter
- **Sequential Search:**
Approach the Sequential search dialog. Please refer to the “Sequential Search” chapter

2.6 Motion Search

Click mouse right button on the channel which you want to do motion search, and then select the “Motion Search” from the popup menu.



- **Define motion search area:**

- **Add:** Click the “Add” button then drag a rectangle area where you want to check. The search area will overlay a transparent red mask.
- **Delete:** Define a rectangle area on the image first, then click “Delete” button to remove the region that was defined.
- **Default:** Click the “Default” button to select full image for motion detection.

Enable the “Show Search Image” to display the searching video sequence or un-check this box to only show the image once the event found.

Enable the “Show Detect Mark” to display the detect result on the image by pink rectangles.

Select the “Sensitivity” to define the sensitivity of detection. The higher value means the event will be triggered easier.

Select the “Detect Interval” to define the interval of motion detection. If set longer value, means system will use less CPU computing power to check motion detection.

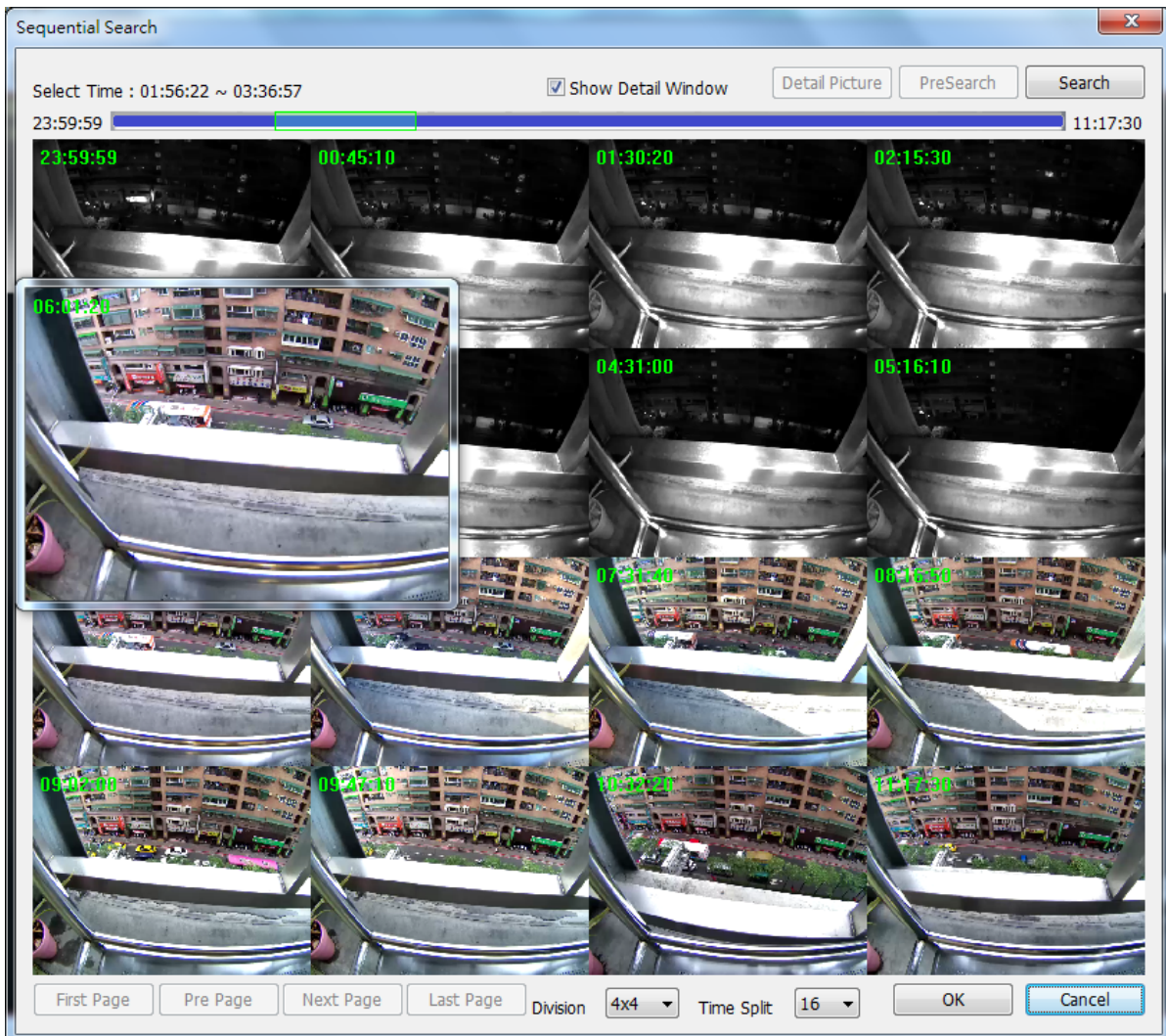
When the event has been triggered, the window on the right side will display the triggered image. If the event is not matched your expectation, click the “Continue” button to search next event.

If you found the matched event, click the “OK” button to return to the playback panel, and all playing channels will be synchronized to the same timestamp of the event.

Click Cancel button to abort this motion search job.

2.7 Sequential Search

Click mouse right button on the channel which you want to do sequential search, and then select the “Sequential Search” from the popup menu.



- **Quick start with sequential search:**

1. Choose sequential search channel and time period.
2. Select two images from these sequential pictures by clicking on the images, and then click the “Search” button.
3. Repeat this procedure until time period into one second resolution.
4. Click “Detail picture” button to approach snapshot images dialog.
5. Select these snapshot images, and save them to assigned folder.

2.7.1 Define search time period:

We need to define time period for the sequential search task. We could define time period by two ways and the selected time period will display on the upper left corner.

Select Time : 13:42:31 ~ 13:53:17

1. Select two images from these sequential pictures to define search time period. Click on the image to select it and click it again to un-select it.

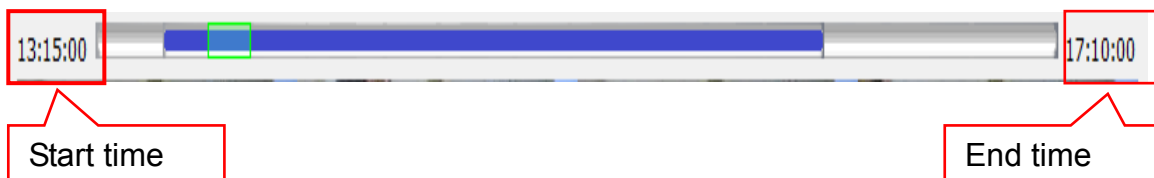


Selected



Un-Selected

2. Or drag on the time line to define search time period directly.



Start time

End time

- **Blue bar:**

The time period of selected images for sequential search.

- **Green transparent bar:**

New time period to be searched.

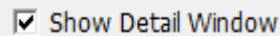
2.7.2 Start search and rollback:

After defined search time period, and then click the “Search” button to display next search result.

Click “Pre search” button for rollback to previous search result.

2.7.3 Detail window for snapshots:

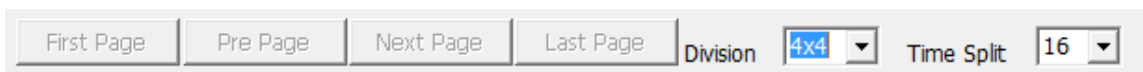
The dialog will display small snapshot images by search result. In case you need bigger image of snapshots, you could enable “Show Detail Window” to get a resizable window for display the detail snapshot.



Show Detail Window

You could move the detail window and resize it to get bigger preview image size.

2.7.4 Preview mode of search result:



You could define the preview mode of search result by these parameters below.

- **Time Split:**
Define the number to divide the search time period equally, and take a snapshot at beginning of each part.
- **Division:**
Select the display division mode of search result.
- **Switch page buttons:**
In case the search result couldn't display within one page, then these buttons will be enabled. Click these buttons to switch the pages of snapshot.