

ES-4000

Email Server Appliance

Since email has become the most important communicating tool in the world, the network administrator always looks for a stable, powerful, and easy installed email server system. Now AirLive presents you a hardware-based Email Server Appliance, ES-4000, it provides POP3, SMTP and Web mail server function that make the equipment suitable for most users; with 160GB hard disk ES-4000 owns the capacity to handle plenty of users; and advanced managed function to customize each account for better performance.



Anti-Virus

SMTP

POP3

160GB
HD

IPC

Web
Mail

Web
Disk

Embedded with mail system

No more software is needed to be installed, administrator only needs to login ES-4000, with configured wizard to set up mail server properly.

Anti-Virus

Built-in with Clam AV scan engine can filter malicious program in mail content, to prevent mail receiver from virus threat. The virus pattern can be updated regularly, and without any license fee.

Mail server transfer

It is very possible to lost mail during the period of a new mail server installation. ES-4000 provides a mechanism to check new mail from old mail server even in the process of DNS synchronized, and keep on receiving the mail.

Mail account transfer

ES-4000 provides a feature to transfer mail account from old mail server just in few configured steps. With learning systems, the administrator will not need to re-create all the account one by one.

DNS

Built-in with DNS server, administrator can setup the domain name resolution by himself, and will not need to spend money to deposit DNS service at ISP.

Web Mail

Sometimes users need to access email in public computer, such as cyber café, and it is not allowed or not properly to download private mail. Web mail function works to provide internet user to check mail via web browser, so users will be able to read or send email in anywhere.

Personal Web Disk

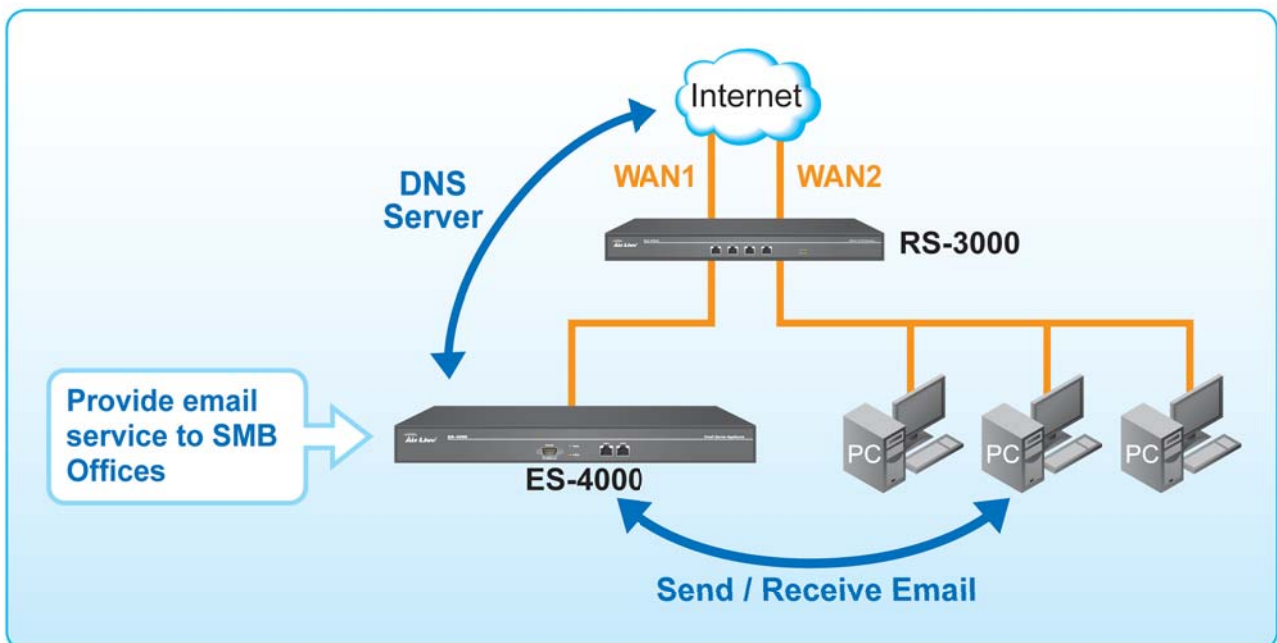
Instead of sending mail with attaching large file, user can store the file in Personal web disk and send out the address of hyperlink, and then Internet user will be able to download it without authentication.

Customize mail account

Each mail account can be customized based on company's policy, the contents include Mail size limitation, Mail box Quota, and Personal web disk quota.

HA

Built-in with HA (High Availability) function, the stored data can be synchronized with two ES-4000 devices, to prevent losing mail in case a mail server crashes.



Specifications

Hardware

- Processor: Celeron 1.2 GHz
- Memory: 256MB Flash, 512MB DRAM
- Hard Disk: 160GB, IDE, ext3 file system
- Power: 100 ~ 240 VAC
- Power consumption: 80 Watts
- Dimension: 430 x 272 x 42 mm

Interface

- Ethernet Port: 2 x 10/100 Base-T Ethernet RJ45 port
- RS-232: DB-9 port for checking system or reset the factory default

Mail System

- POP3

- SMTP
- Web mail
- Personal Web Disk
- DNS Server
- Unlimited maximum users
- Suggested maximum users under 500

Transfer Mechanism

- Account Transfer
- Mail Transfer

Mail Security

- Clam AV for Anti-Virus engine

Mail Account Managed

- Mail Size Limitation
- Mail Box Quota
- Personal Web Disk

Mail Backup

- HA
- Mail Copier

Management and Maintenance

- Web-based management
- Firmware upgrade
- Export or import the config file

Environment Specification

- Operating Temperature: 0 ~ 40 °C
- Operating Humidity: 5% ~ 95%

Certification:

- CE, FCC

Ordering Information:

ES-4000 Email Server Appliance