

Air Live
Smart Life  **IoT**
For Home



Smart Home Kit QIG



● Setup the IoT Package

- Start to use IoT Gateway 1
- Start to use IoT Device 5
- Start to use AirLive Smart Life App 9

● Appendix

- Exclude Sensors 12
- Include Sensors 18
- Include Smart Plug (Option) 23
- Include SmartCube 300W (Option) 25

Setup the IoT Package

Start to use IoT Gateway



Start to use IoT Gateway

01

Download the Smart Life APP

Please visit App Store or Google Play to download AirLive Smart Life APP. You can use QR code scanner software directly or simply search the "AirLive Smart Life".



AirLive Smart Life

App Store



Google Play



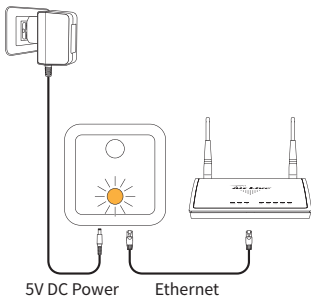
Setup the IoT Package

Start to use IoT Gateway

02 Install the Gateway

Connect the gateway to the Router by Ethernet cable

Note: When the internet connection is built, a white LED light will turn ON.



03 Add the Gateway

Click the “AirLive Smart Life” icon on your smart phone, and click “+ Gateway” to add gateway.

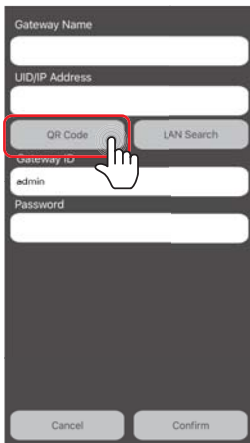


Setup the IoT Package

Start to use IoT Gateway

04 Select scan QR code

Please select "QR Code" to add gateway.



Gateway Name

UID/IP Address

QR Code LAN Search

Gateway ID

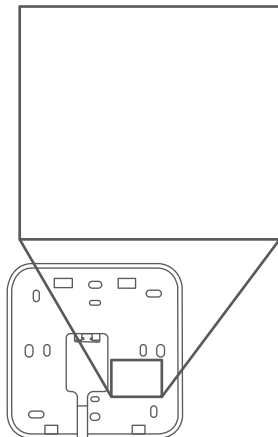
admin

Password

Cancel Confirm

05 Scan the QR code

Please scan the QR code to add the gateway.



Back of the gateway

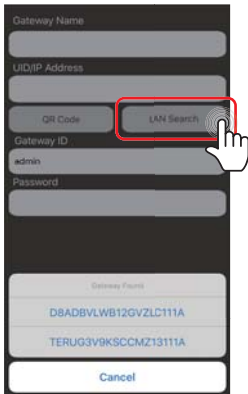
Setup the IoT Package

Start to use IoT Gateway

06 Select LAN Search

Or click "LAN search" to add the gateway if QR code not work.

Note: Make sure your phone and gateway are on the same network segment



The screenshot shows a mobile app interface for adding a gateway. It has several input fields: Gateway Name, UID/IP Address, QR Code, Gateway ID (with 'admin' entered), and Password. The 'LAN Search' button is highlighted with a red rectangle, and a hand icon is pointing at it. Below these fields is a 'Gateway Found' section with two entries: 'D8ADBVLWB12GVZLC111A' and 'TERUG3V9KSCCMZ13111A'. At the bottom is a 'Cancel' button.

07 Key in the password

Key in gateway ID and password to field. The default ID is "admin" and the password is "airlive"

Note: gateway name can be changed to your desired name.



The screenshot shows the same mobile app interface as in step 06, but now the 'Gateway Name' field contains 'SG-101' and the 'Password' field is filled with dots. The 'Gateway ID' field still contains 'admin'. The 'Cancel' and 'Confirm' buttons are at the bottom.

Setup the IoT Package

Start to use IoT Device

08 Sensor List

Click "Sensors" tab, all included sensors should be shown on screen.

Note: If the sensors is not list or you want to add new sensors, please go to "include sensor" chapter.



Air Live
Smart Life IOT
For Home



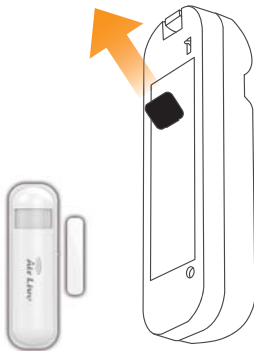
Start to use IoT Device

Setup the IoT Package

Start to use IoT Device

01 Start to use 3 in 1 sensor

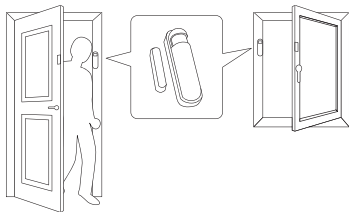
Remove the black mylar, the red light will flash about 10 seconds. And then you can paste the device on the door or window.



02 Install the 3 in 1 sensor

Use the double-sided adhesive attached to back of the device, and paste the device on the door or window.

Note: The sensor should be aligned with the center line when pasting (gap up and down within 1cm / width 2cm)



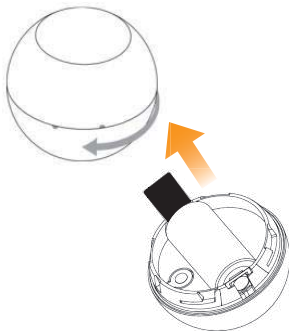
Setup the IoT Package

Start to use IoT Device

03 Start to use Motion(PIR) Sensor

Turn the cover counter-clockwise and open it. Remove the black mylar, the red light will flash 3 times. And then you can fix the bracket on the wall.

Note: Enclosure lock is marked with a dot.



04 Install the Motion sensor

Fix the bracket on the wall. There's a magnet on the backside of this device. it will stick to the bracket.

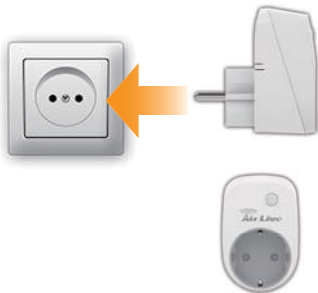


Setup the IoT Package

Start to use IoT Device

05 Start to use Smart Plug (Option)

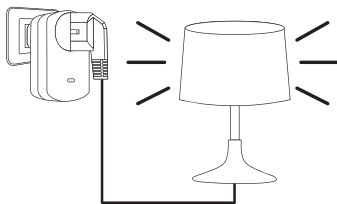
Plug the device into the outlet. And then you can plug the appliance's power into the plug.



06 Install the Plug

Plug the appliance's power into the plug.

Ex: table lamp, electric fan



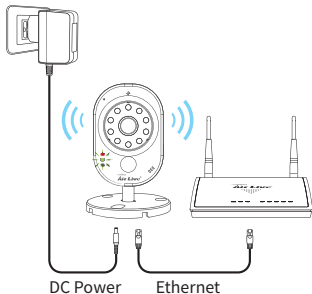
Setup the IoT Package

Start to use AirLive Smart Life App

07 Install the SmartCube 300W (Option)

For the package with SmartCube 300W version, please connect the camera to the Router by Ethernet cable and power on.

Note: When camera connects to the router successfully, the green led will be flashing.



Air Live
Smart Life IOT
For Home



Start to use
AirLive Smart Life App

Setup the IoT Package

Start to use AirLive Smart Life App

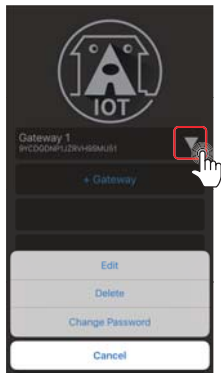
01 Execute the Smart Life APP

Click the “AirLive Smart Life” icon on your smart phone



02 Enter the APP Main Screen


- Click “**downward arrow**” icon to edit the Gateway name, delete the Gateway, or change default password
- Click the “**Gateway name**” to enter the main screen.

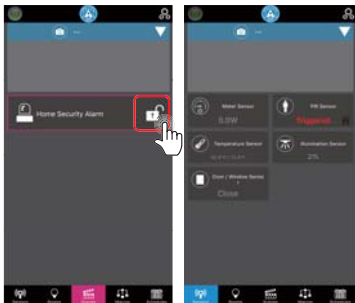


Setup the IoT Package

Start to use AirLive Smart Life App

03 Intruder Alarm and Sensor Screen

- Click the padlock to close, then security will be in armed mode.
Note: If door/window or Motion sensor is triggered, user will receive a notification.
- All included sensors will be shown on the Sensors Tab , you can turn on/off each sensor in this tab.



04 Smart Rule

Airlive Smart Life APP features “Smart Rules” which allows you to group sensors from different rooms, as well as to carry out Scenes, Macros and Schedule Management settings.

Room: Create different settings for rooms



Scene: Make multiple actions such as turning on multiple lightings at the same time.



Macro: Set “IF->Then” conditions. For example, if the interior illumination is below certain level, the light will turn on.



Schedule: Create activities at different time of the day. For example, turn on the stereo to play your favorite music when waking up.



For more information on setting up the Smart Rules, please reference our company webpage to download the full APP operation guide.

Appendix

Exclude Sensors

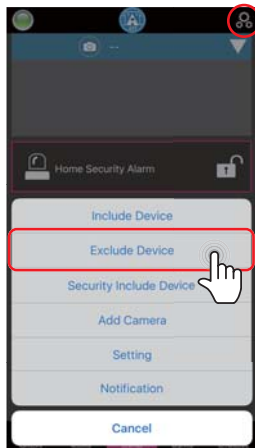


The sensor has been included to the gateway by default, but if you want to include device again you must exclude it.

Exclude Sensors

01 Exclude 3 in 1 sensor -1

If you want to exclude device, please click  and select "Exclude device"



Appendix

Exclude Sensors

02 Exclude 3 in 1 sensor -2

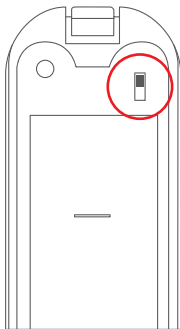
APP will show "Exclude device", and start count down.



03 Exclude 3 in 1 sensor -3

Press the tamper key quickly 3 times on the device and the red LED will flash

Note: when device excluded, it will automatically be in the inclusion mode, red light slowly flashing for 30 seconds.



Appendix

Exclude Sensors

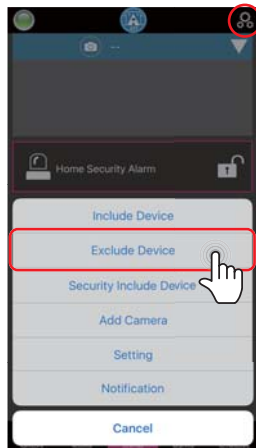
04 Exclude 3 in 1 sensor -4

When exclusion is successful the APP will display a message



05 Exclude Motion Sensor -1

If you want to exclude device, please click  and select "Exclude device"



Appendix

Exclude Sensors

06 Exclude Motion Sensor -2

APP will show "Exclude device", and start count down.



07 Exclude Motion Sensor -3

Quickly press the tamper key 3 times then the red light LED will flash.

Note: when device excluded, it will automatically be in the inclusion mode, red light slowly flashing for 30 seconds.



Appendix


Exclude Sensors

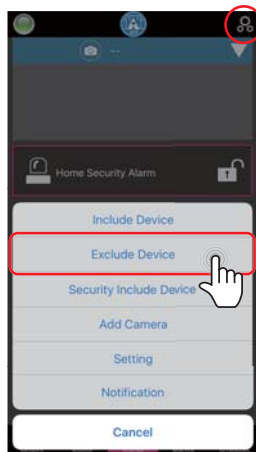
08 Exclude Motion Sensor -4

When exclusion is successful the APP will display a message



09 Exclude Smart Plug -1

If you want to exclude device, please click  icon and select "Exclude device"



Appendix

Exclude Sensors

10 Exclude Smart Plug -2

APP will show "Exclude device", and start count down.



11 Exclude Smart Plug -3

Press LED key on the plug to quickly press 3 times then the red light LED will flash.

Note: when device excluded, it will automatically be in the inclusion mode, red light slowly flashing for 30 seconds.



Appendix

Exclude Sensors / Include Sensors

12 Exclude Smart Plug -4

When exclusion is successful the APP will display a message



Air Live
Smart Life IOT For Home



Include Sensors

Appendix

Include Sensors

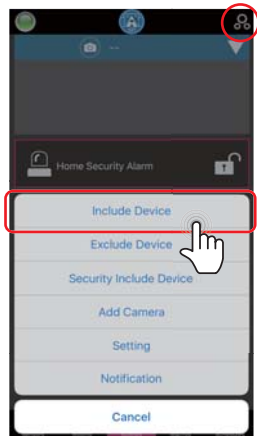
01 Include 3 in 1 sensor -1

3 in 1 sensor will automatically be in the inclusion mode if you excluded device, a red light slowly flashing for 30 seconds.



02 Include 3 in 1 sensor -2

While device is in inclusion mode, click  and select "Include Device"



Appendix

Include Sensors

03 Include 3 in 1 sensor -3

Start to include a device.



04 Include 3 in 1 sensor -4

When the device is being included, APP will configure the setting into gateway.



Appendix

Include Sensors

05 Include Motion Sensor -1

Motion Sensor will automatically be in the inclusion mode if you excluded device, a red light slowly flashing for 30 seconds.



06 Include Motion Sensor -2

While device is in inclusion mode, click  and select "Include Device"



Appendix

Include Sensors

07 Include Motion Sensor -3

Start to include a device.



08 Include Motion Sensor -4

When the device is being included, APP will configure the setting into gateway.



Appendix

Include Smart Plug (Option)

Air Live
Smart Life IOT
For Home



Include Smart Plug
(Option)

01 Include smart plug -1

Plug the device into the outlet.

Note: Plug will automatically be in inclusion mode if you excluded device, a red light slowly flashing for 30 seconds.

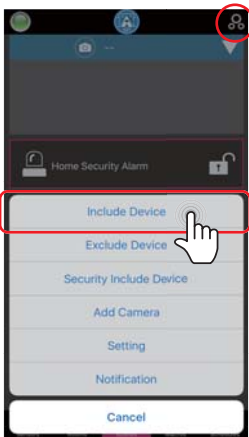


Appendix

Include Smart Plug (Option)

02 Include smart plug -2

While device is in inclusion mode, click  and select "Include Device"



03 Include smart plug -3

Start to include device.



Appendix

Include SmartCube 300W (Option)

04 Include smart plug -4

When the device is being included, APP will configure the setting into gateway.



Air Live
Smart Life IOT For Home



Include SmartCube 300W
(Option)

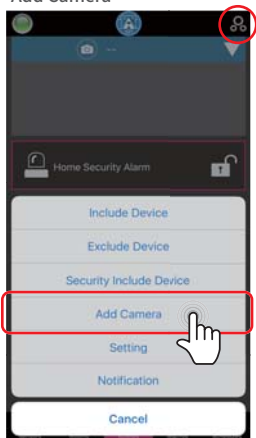
Appendix

Include SmartCube 300W (Option)

02 Add Camera

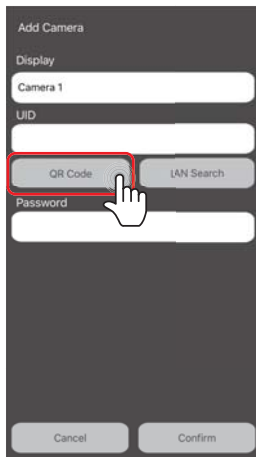
Connect the camera to the Router by Ethernet cable and power on.

Click  icon and click "Add Camera"



03 Select scan QR code or LAN search

Please select "QR Code" or "LAN Search" to add camera.

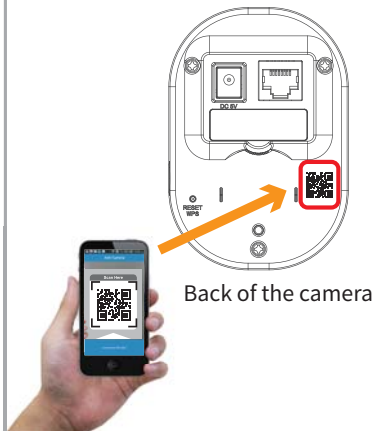


Appendix

Include SmartCube 300W (Option)

04 Scan the QR code

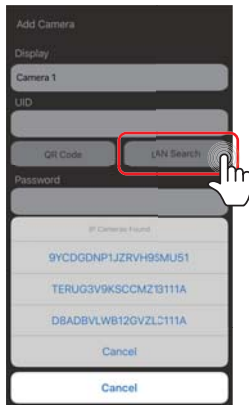
Please scan the QR code to add the camera. You can find the camera's QR code on the back of the camera.



05 LAN Search

Or click "LAN search" to add the camera if QR code not work.

Note: Make sure your phone and camera are on the same network segment



Appendix

Include SmartCube 300W (Option)

06 Key in the password

Key in camera's password and display name to field. The default password is "airlive"

Note: display name can input you desired name.

Add Camera

Display

Camera 1

UID

5M5EPVCS86BJ54N5111A

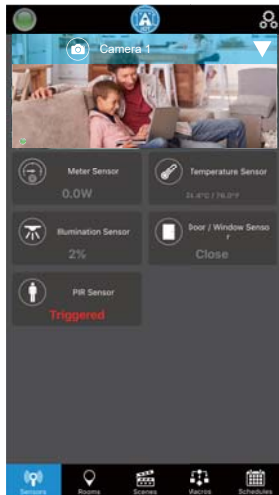
QR Code LAN Search

Password

q w e r t y u i o p
a s d f g h j k l
z x c v b n m
.123 space return

07 Live View

Live streaming should be displayed.





FCC Interference Statement

This equipment has been tested and found to comply with the limits for a Class B digital device, pursuant to Part 15 of the FCC Rules.

These limits are designed to provide reasonable protection against harmful interference in a residential installation.

This equipment generates, uses and can radiate radio frequency energy and, if not installed and used in accordance with the instructions, may cause harmful interference to radio communications.

However, there is no guarantee that interference will not occur in a particular installation.

If this equipment does cause harmful interference to radio or television reception, which can be determined by turning the equipment off and on, the user is encouraged to try to correct the interference by one of the following measures:

- **Reorient or relocate the receiving antenna.**
- **Increase the separation between the equipment and receiver.**
- **Connect the equipment into an outlet on a circuit different from that to which the receiver is connected.**
- **Consult the dealer or an experienced radio/TV technician for help.**

This device complies with Part 15 of the FCC Rules. Operation is subject to the following two conditions:

- (1) This device may not cause harmful interference, and
- (2) This device must accept any interference received, including interference that may cause undesired operation.

FCC Caution: Any changes or modifications not expressly approved by the party responsible for compliance could void the user's authority to operate this equipment.

This transmitter must not be co-located or operating in conjunction with any other antenna or transmitter.

Warning

Do not dispose of electrical appliances as unsorted municipal waste, use separate collection facilities.

Contact your local government for information regarding the collection systems available.

If electrical appliances are disposed of in landfills or dumps, hazardous substances can leak into the groundwater and get into the food chain, damaging your health and well-being.

When replacing old appliances with new ones, the retailer is legally obligated to take back your old appliance for disposal at least for free of charge.

RF Exposure Information (SAR)

This device meets the government's requirements for exposure to radio waves. This device is designed and manufactured not to exceed the emission limits for exposure to radio frequency (RF) energy set by the Federal Communications Commission of the U.S. Government.

The exposure standard employs a unit of measurement known as the Specific Absorption Rate, or SAR. The SAR limit set by the FCC is 1.6 W/kg. Tests for SAR are conducted using standard operating positions accepted by the FCC with the EUT transmitting at the specified power level in different channels.

The FCC has granted an Equipment Authorization for this device with all reported SAR levels evaluated as in compliance with the FCC RF exposure guidelines. SAR information on this device is on file with the FCC and can be found under the Display Grant section of www.fcc.gov/eet/ea/fccid after searching on **FCC ID: ODM5G101**

Smart Home Kit QIG



www.airlive.com

OvisLink Corp.

5F, No.6, Lane 130, Min-Chuan Rd., Hsin-Tien Dist., New Taipei City 231, Taiwan TEL: +886 2218 6888 FAX: +886 2218 6988