

**Air Live**  
Smart Life 



Smart Home Kit QIG for APP



## ● APP Operation Guide

● APP introduce	1
● Room Setting	4
● Scene Setting	13
● Marco Setting	17
● Schedule Setting	21

# APP Operation Guide

## APP introduce



## AirLive Smart Life APP Operation Guide

### About the Smart Life APP

AirLive Smart Life APP features  
“**Smart Rules**” to make your life easier.

**Sensors:** Turn on/off individual devices

**Room:** Create different settings for rooms

**Scene:** Make multiple actions such as  
turning on multiple lightings at the  
same time.

**Macro:** Set “**IF->Then**” conditions. For  
example, if the interior illumination  
is below certain level, the light will  
turn on.

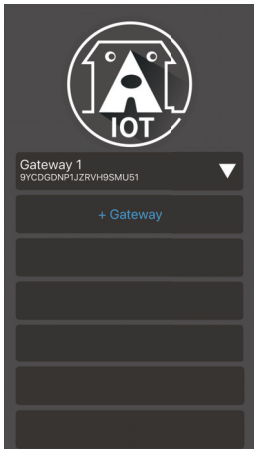
**Schedule:** Create activities at different time  
of the day. For example, turn on  
the stereo to play your favorite  
music when waking up.

# APP Operation Guide

## APP introduce

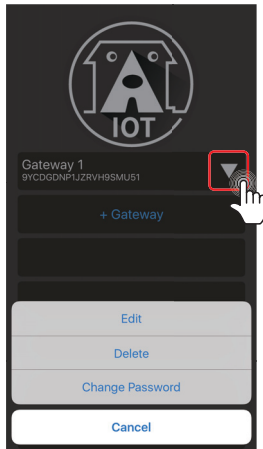
### 01 Execute the Smart Life APP

Click the “**AirLive Smart Life**” icon on your smart phone



### 02 APP Setting

Click “**downward arrow**” icon to edit the Gateway name, delete the Gateway, or change default password



# APP Operation Guide

## APP introduce

### 03 Enter the APP Main Screen

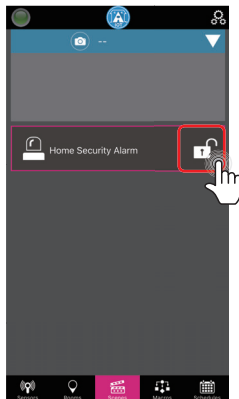
Click the “Gateway name” to enter the main screen.



### 04 Intruder Alarm

Click the padlock to close, then security will be in armed mode.

**Note:** If door/window or Motion is triggered, user will receive a notification.

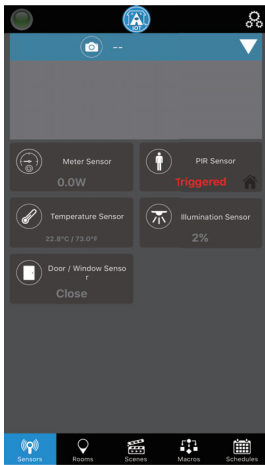


# APP Operation Guide

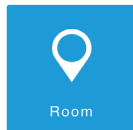
## APP introduce / Room Setting

### 05 Sensor Screen

All included sensors will be shown on the Sensors Tab.



**Air Live**  
Smart Life IOT  
For Home



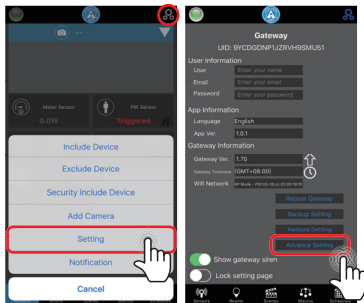
Room Setting

# APP Operation Guide

## Room Setting

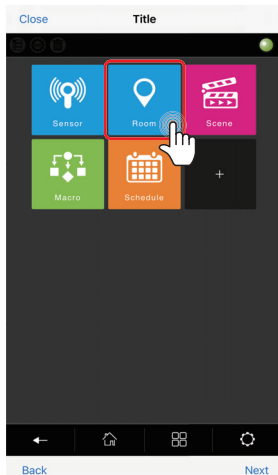
### 01 Add New Room -1

Click  icon --> Settings and enter the Advance settings page



### 02 Add New Room -2

Click "Room"

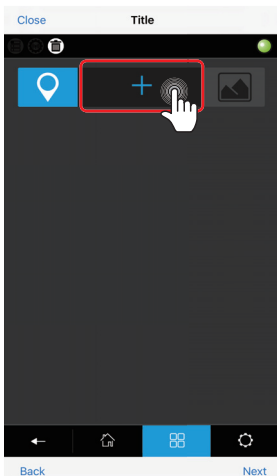


# APP Operation Guide

## Room Setting

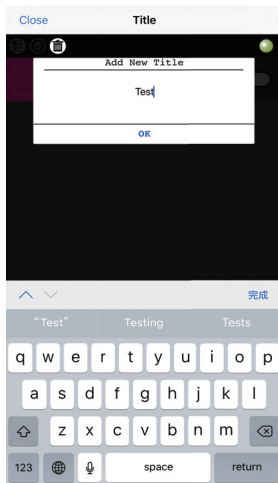
### 03 Add New Room -3

Click "+" to add new room.



### 04 Add New Room -4

Provide a name for the room.





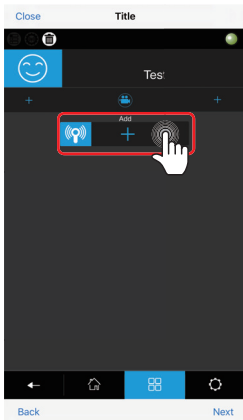
# APP Operation Guide

## Room Setting

### 05 Add New Room -5

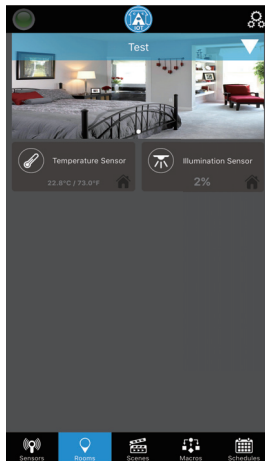
Click "+" to add sensors.

**Note:** Once a sensor has already been placed in a room, it cannot be added to another room.



### 06 Add New Room -6

After creating the room, this is how it looks like in room

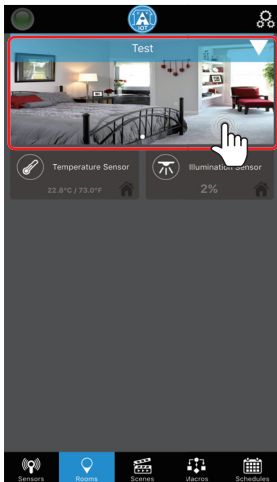


# APP Operation Guide

## Room Setting

### 07 Change the Room Image -1

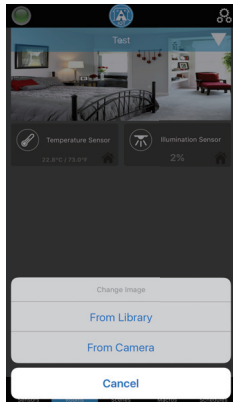
Click on the image



### 08 Change the Room Image -2

You can choose an image from the Library or from the Camera.

**Note:** Images are done locally, so any image change done in room will only remain on that device.

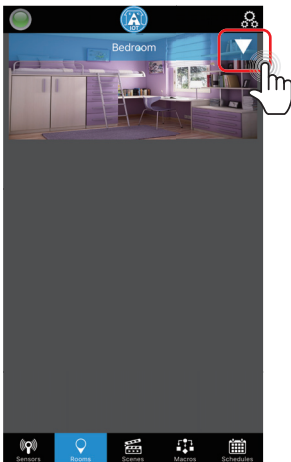


# APP Operation Guide

## Room Setting

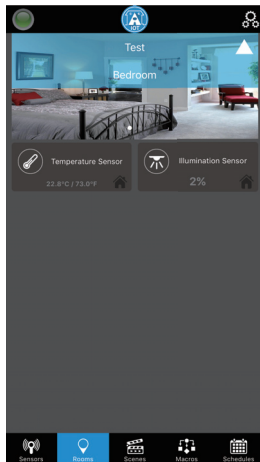
### 09 Move to a different room -1

Select the downward arrow on the upper right side.



### 10 Move to a different room -2

Select the room you want to view

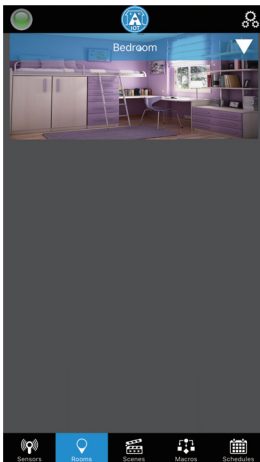


# APP Operation Guide


## Room Setting

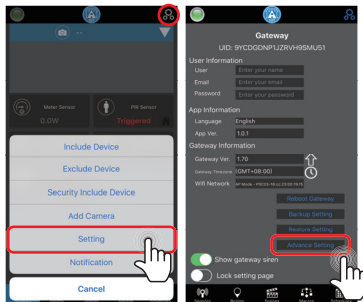
### 11 Move to a different room -3

Once you have selected a room, you will be moved to room



### 12 Delete the sensor from room -1

Click  icon --> Settings and enter the Advance settings page

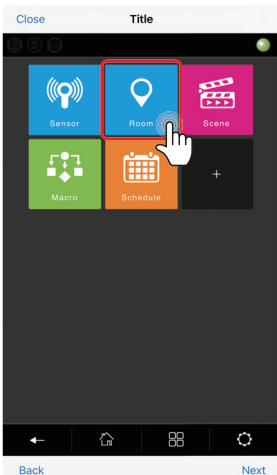


# APP Operation Guide

## Room Setting

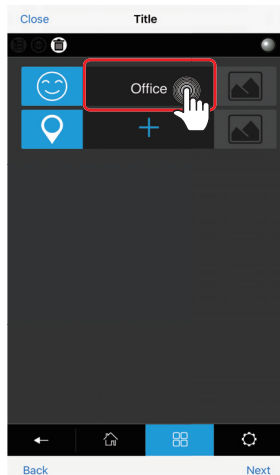
### 13 Delete the sensor from room -2

Click "Room"



### 14 Delete the sensor from room -3

Click the Room name

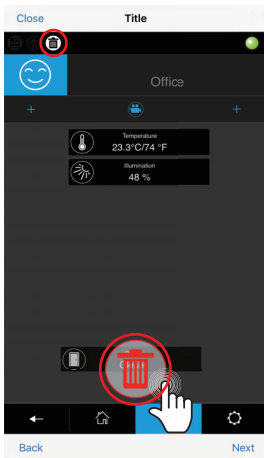


# APP Operation Guide

## Room Setting

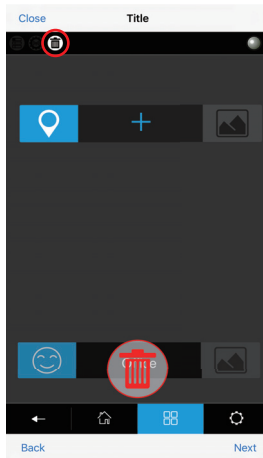
### 15 Delete the sensor from room -4

Click "**trash can**" icon and drag the sensor to the bottom trash can



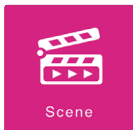
### 16 Delete the Room

Click the "**trash can**" icon and drag room to the trash can icon.




# APP Operation Guide

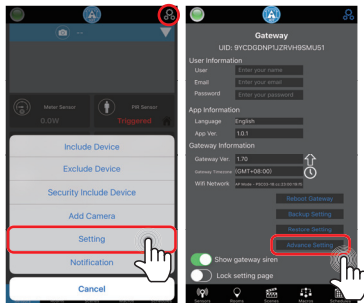
## Scene Setting



Scene Setting  
Create Multiple Actions

### 01 Add New Scene -1

Click  icon --> Settings and enter the Advance settings page

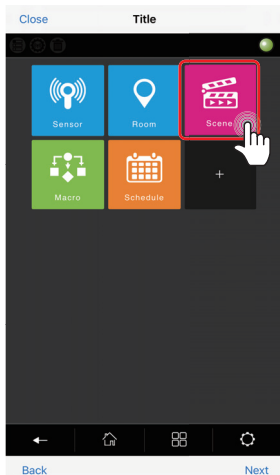


# APP Operation Guide

## Scene Setting

### 02 Add New Scene -2

Click "Scene"



### 03 Add New Scene -3

Click "+" to add new Scene.



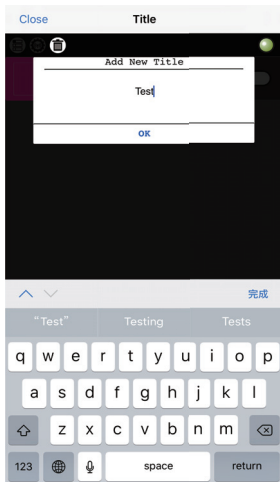


# APP Operation Guide

## Scene Setting

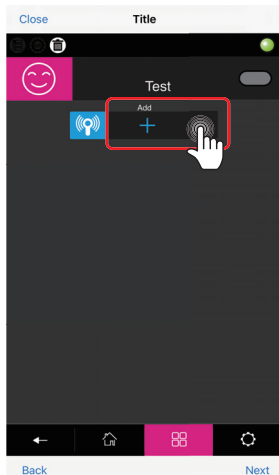
### 04 Add New Scene -4

Provide a name for the Scene.



### 05 Add New Scene -5

Click "+" to add sensors to a Scene.

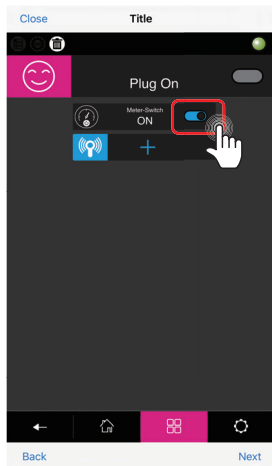


# APP Operation Guide

## Scene Setting

### 06 Add New Scene -6

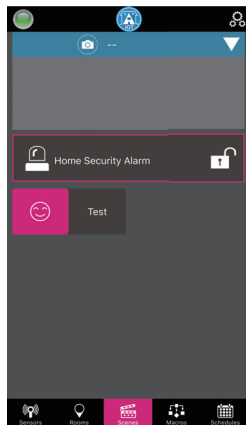
After adding the sensor, user can set the sensor action.



### 07 Add New Scene -7

After creating the scene, this is how it looks like in scene.

**Note:** Click on the scene and sensors will do what it was set to do.



# APP Operation Guide


## Marco Setting

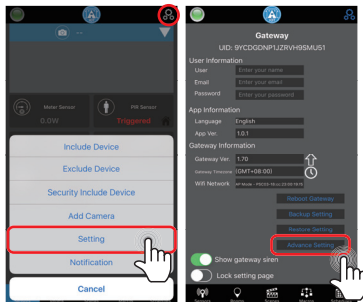


### Marco Setting

Create If-Then Conditions

#### 01 Add New Macro -1

Click  icon --> Settings and enter the Advance settings page

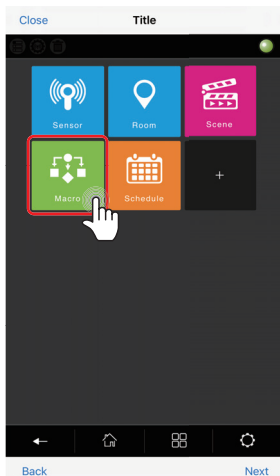


# APP Operation Guide

## Marco Setting

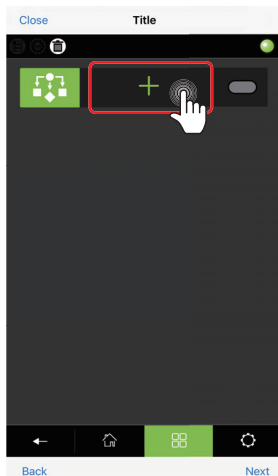
### 02 Add New Macro -2

Click "Macro"



### 03 Add New Macro -3

Click "+" to add new Macro.

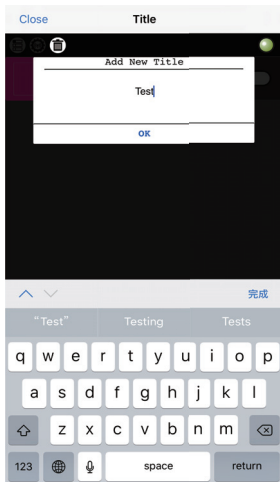


# APP Operation Guide

## Marco Setting

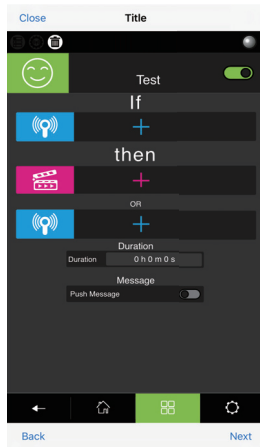
### 04 Add New Marco -4

Provide a name for the Macro.



### 05 Add New Marco -5

Setting up the IF This Then That (ITTT)  
Ex: If door is opened, then Plug will turn ON.



# APP Operation Guide

## Marco Setting

### 06 Add New Marco -6

To specify the duration, click the duration and set the time.



### 07 Add New Marco -7

To receive a alert when the macro is triggered, tap the switch beside the notification.



# APP Operation Guide

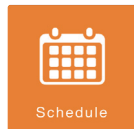
## Marco Setting / Schedule Setting

### 08 Add New Marco -8

After creating the marco, you can now turn the marco on/off on your phone.



**Air Live** Smart Life IOT For Home




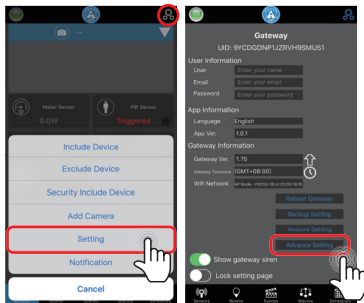
## Schedule Setting

# APP Operation Guide

## Schedule Setting

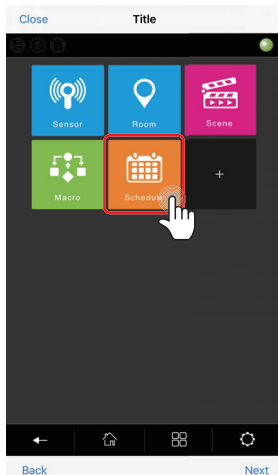
### 01 Add New Schedule -1

Click  icon --> Settings and enter the Advance settings page



### 02 Add New Schedule -2

Click "Schedule"



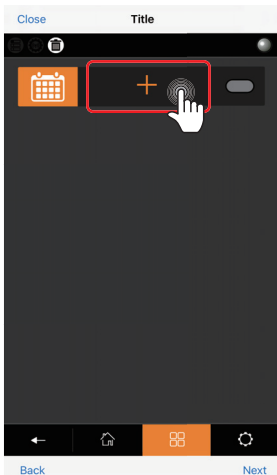


# APP Operation Guide

## Schedule Setting

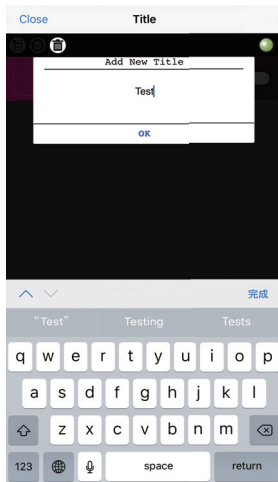
### 03 Add New Schedule -3

Click "+" to add new Schedule.



### 04 Add New Schedule -4

Provide a name for the schedule.



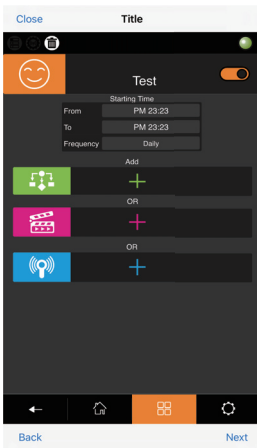
# APP Operation Guide

## Schedule Setting

### 05 Add New Schedule -5

Setting up the schedule.

**Note:** Once a Scene/Macro is used, other sensors cannot be added.



### 06 Add New Schedule -6

After creating the schedule, you can now turn it on/off on your phone.



