

IP-2000VPN

Internet VPN Router

Have you thought about connecting 2 offices' networks together over Internet, or to access the company's network from Internet? The IP-2000VPN is a cost effective solution to achieve such goal. Just follow the wizard to configure IPsec VPN, and it is no longer a difficult job to set up your own VPN environment.

Office-to-Office
IPSec VPN

PPTP
VPN

SPI & DoS
Firewall

Rule based
Firewall

Multi-DMZ

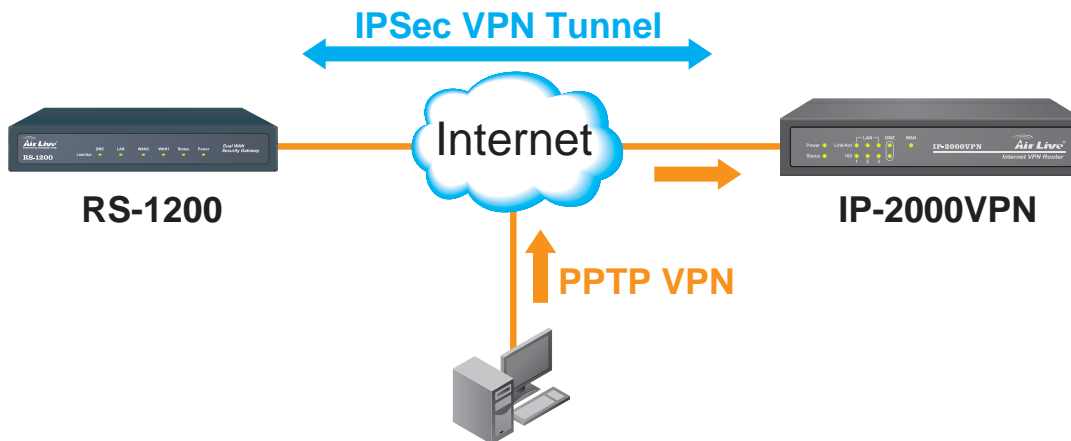
Schedule

Static route
& RIP v1 v2

URL
Filter

DDNS

UPnP



What is VPN?

The most cost effective solution to connect 2 remote offices' networks together is through Internet. But security is a major concern when your office's network traffic is traveling freely on the public network. VPN is the solution for such purpose. VPN encrypts all data before sending out to the public network, then decrypt the data when it reaches the destination, it makes the data completely unreadable to outsiders. The IP-2000VPN features IPsec VPN server and PPTP VPN server.

Manufacturer

OvisLink Corp.

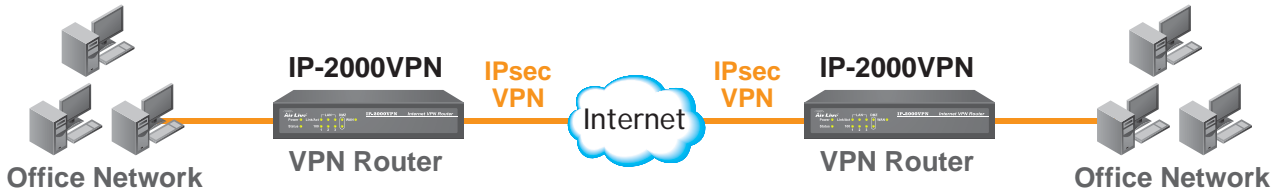
5F, No.96, Min-ChuanRd, Hsin-tien City, Taipei, Taiwan

www.airlive.com

Office-to-office VPN Connection

IPSec VPN offers more security but the configuration is also more complex, so it is mostly used in Office-to-Office connection. It is also known as Site-to-Site VPN.

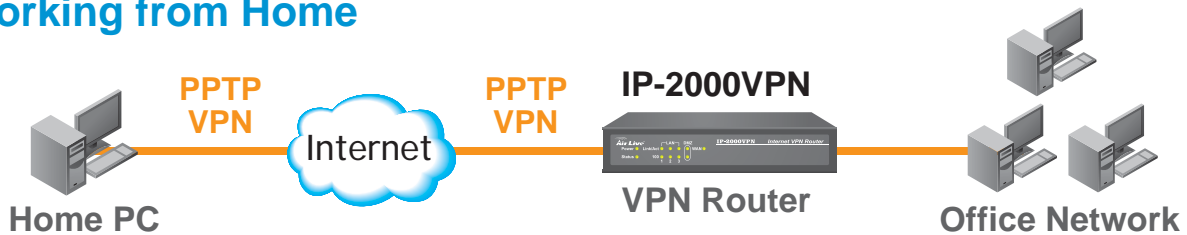
Connecting 2 Offices' Networks



Client-to-Server VPN Connection

PPTP VPN offers less security but simple configuration, they are mostly used to let users work from home. It is also known as Client-to-Server VPN or "Dial-up VPN".

Working from Home

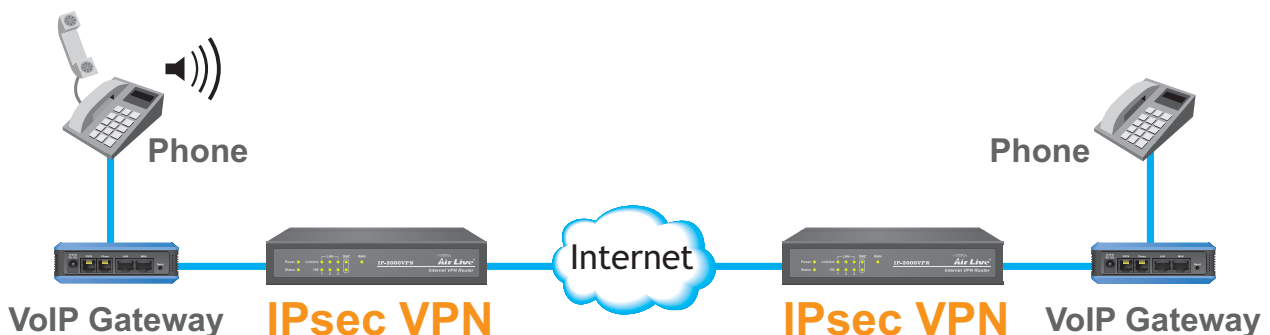


The AirLive IP-2000VPN features with IPSec and PPTP VPN server.

VoIP VPN Network

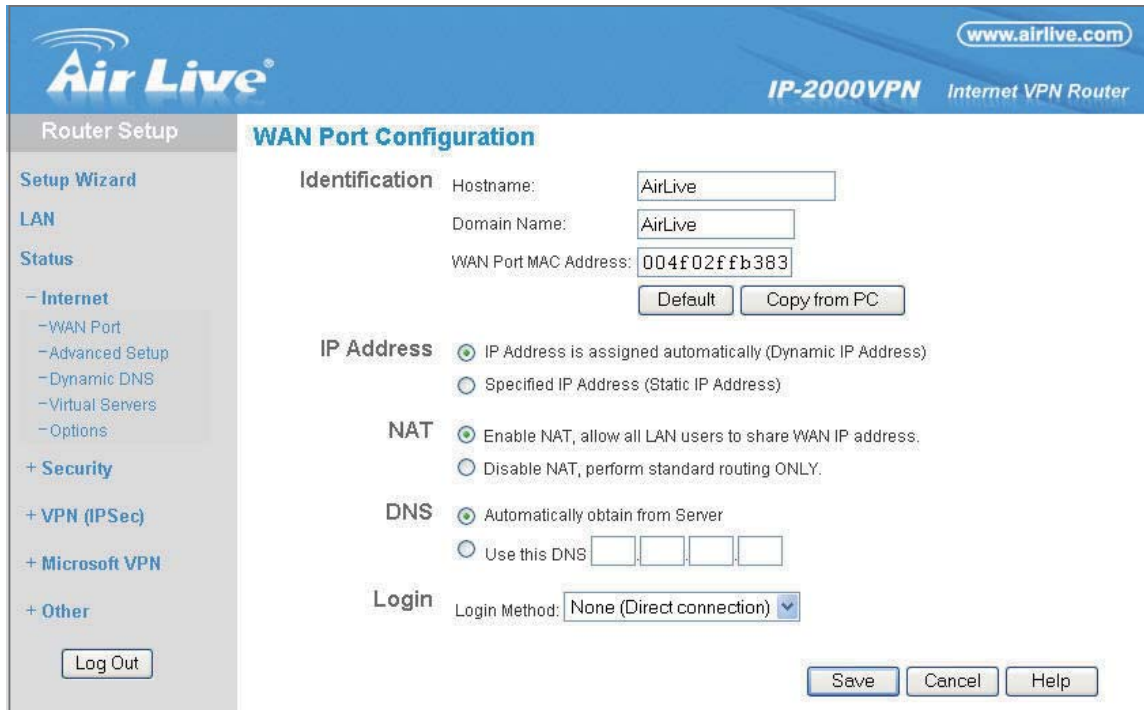
The use of VPN is very popular with enterprise VoIP service. It can prevent people accessing the VoIP network from outside networks

Create Secured VoIP Network



Internet Access Features

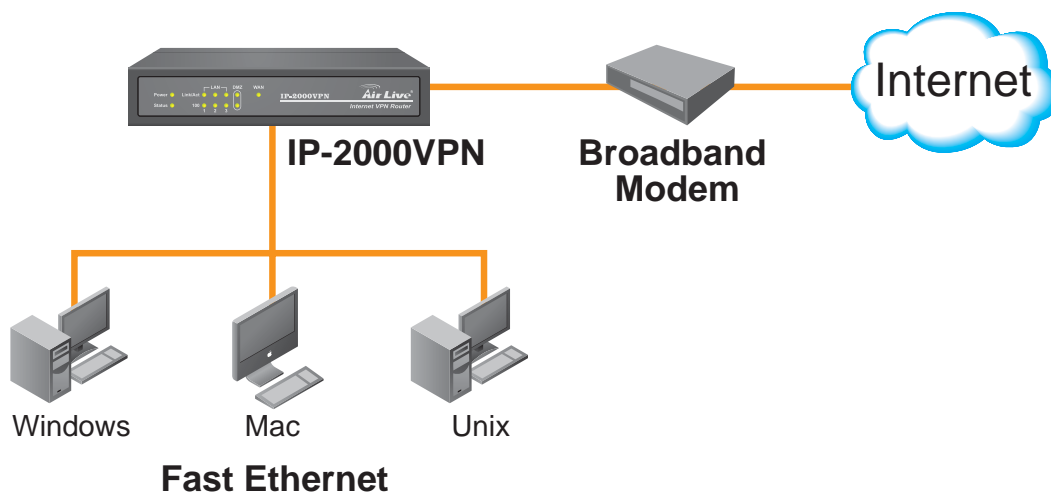
The AirLive IP-2000VPN WAN interface can be configured as Fixed IP, Dynamic IP, PPPoE, PPTP, L2TP, Telstra Big Pond, and SingTel RAS. The flexible configuration makes it suitable for all kinds of Internet connection.



The screenshot shows the 'WAN Port Configuration' page of the AirLive IP-2000VPN router. The page is divided into a left sidebar and a main configuration area. The sidebar includes 'Router Setup', 'Setup Wizard', 'LAN', 'Status', and various configuration options like 'Internet', 'Security', and 'VPN'. The main area is titled 'WAN Port Configuration' and contains several sections: 'Identification' with fields for Hostname (AirLive), Domain Name (AirLive), and WAN Port MAC Address (004f02ffb383); 'IP Address' with radio buttons for 'Dynamic IP Address' (selected) and 'Static IP Address'; 'NAT' with radio buttons for 'Enable NAT' (selected) and 'Disable NAT'; 'DNS' with radio buttons for 'Automatically obtain from Server' (selected) and 'Use this DNS'; and 'Login' with a dropdown menu for 'Login Method' set to 'None (Direct connection)'. Buttons for 'Save', 'Cancel', and 'Help' are at the bottom right.

Security Features

The IP-2000VPN's security function does not only offer VPN feature, it is also a router built-in with SPI and DoS firewall to protect internal device from the hacker's attack.



With VPN and router's feature, you can deploy AirLive IP-2000VPN in several environments such as SMB office, branch office, SOHO user and the home user.

Specifications

Hardware

- Processor: ADM5120P
- Memory: 2M Flash, 8M DRAM
- Reset Button
- Power: DC 12V, 1A
- Dimension: 141 x 100 x 27 mm
- Weight: 360g

Interface

- WAN: 1 x 10/100Mbps Ethernet RJ-45 port, Auto-sensing
- LAN: 3 x 10/100Mbps Ethernet RJ-45 port, Auto-sensing
- DMZ: 1 x 10/100Mbps Ethernet RJ-45 port, Auto-sensing

VPN Specification

- IPSec
 - Up to 10 IPSec VPN tunnel
 - 2Mbps Throughput
 - Encryption: DES, 3DES, AES-128, 192, 256 bits
 - Authentication: MD5, SHA-1
 - Certificate VPN support
- PPTP
 - Up to 10 PPTP VPN tunnel
 - MS-CHAPv2, MS-CHAP, CHAP, and PAP support

Performance:

- NAT Throughput: 60Mbps
- Maximum Concurrent Sessions:
 - TCP: 2000
 - UDP: 600

Security Specification

- SPI Firewall
- DoS
- NAT Protection
- Rule Based Policy Firewall

Advanced Internet Functions

- Multi-DMZ
- Virtual Server
- URL Filter
- Applications Layer Gateway
- IPSec, PPTP, L2TP VPN pass through

Internet Access Features

- Fixed IP
- Dynamic IP
- PPPoE
- PPTP
- L2TP
- Telstra Big pond
- SingTel RAS

Configuration and Management

- DDNS
- UPnP
- Static Route, RIPv1, v2
- Schedule
- Mail Alert and Syslog support

Environment

- Temperature: 0 ~ 40°C (Operating)
-10 ~ 70°C (Storage)
- Humidity: 10% ~ 95%

Certificates

- CE, FCC

Ordering Information

IP-2000VPN Internet VPN Router