

IP-200PHD-24

2.0 Mega Pixel Passive PoE IPCamera

Still couldn't find a way to watch your children or the elders when you are in busy or on duty? Or just need an easy solution for monitoring your office, store or garage? AirLive IP-200PHD-24, with the Tiny-Cube size and Passive POE function, it moves the "Surveillance" from a complex task to a Simply "Plug and Watch" job.

* The model, IP-200PHD-24B, sold to Argentina, does not included SD card function.



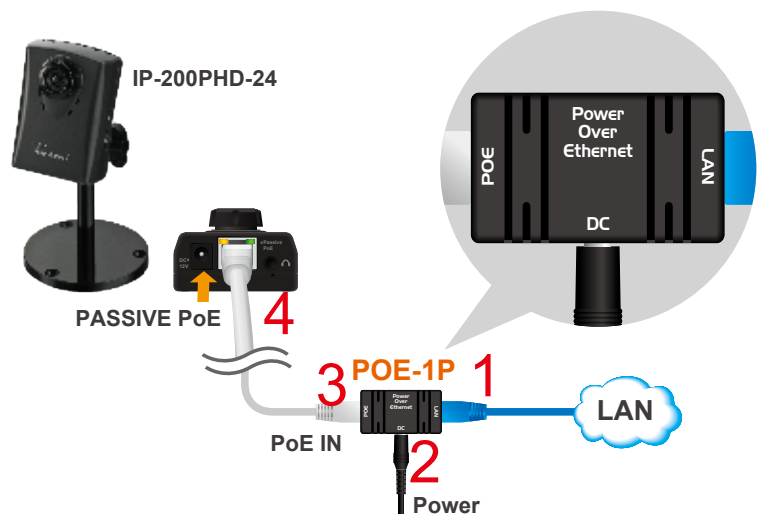
High Quality 2.0 MegaPixel Image

IP-200PHD-24 equips a 2.0 MegaPixel sensor for capturing high quality video stream. With this sensor, IP-200PHD-24 is capable to capture images up to 1600 x 1200 pixels resolution. One of the most compelling advantages of MegaPixel surveillance systems is the ability to capture more details in a frame and at the same time not missing any finer details that are useful for license plate identification and human recognition.



Easy to Install

IP-200PHD-24 is a tiny cube, light but full featured IP camera. It can be easily mounted on the wall or ceiling and decrease the burden of cabling with its network function. Moreover, by using its Passive POE function, it can greatly decrease the burden of cabling. Intelligent IP Installer, the assistant utility for searching IP-200PHD-24 in the network, can speed up the installation with only few clicks on the computer.

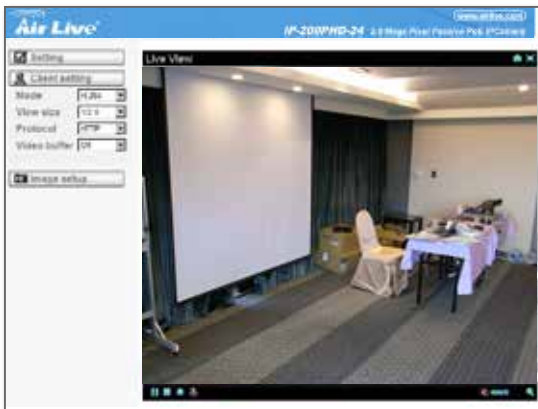
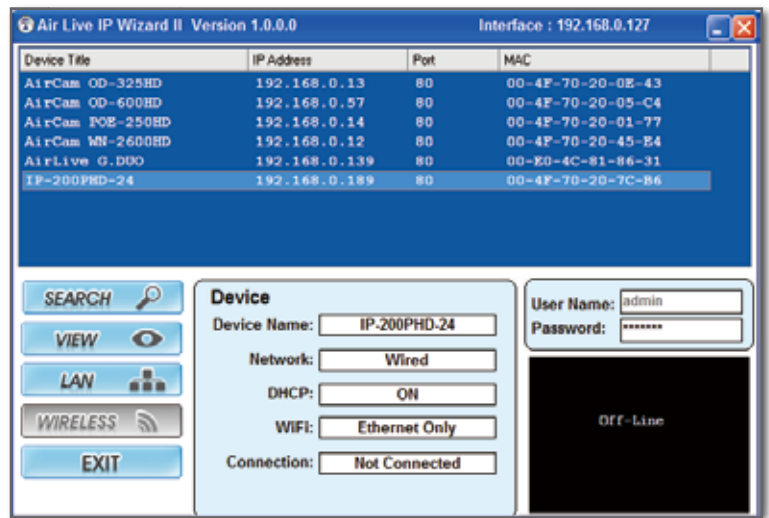


12-24V passive PoE DC injector included

Note: This device uses 12-24V passive PoE. It is not compatible with 802.3af or 802.3at PoE switch. Please do not connect this device to PoE switch, or the device might be damaged.

When you installed the Camera on a LAN environment, you have one easy ways to search your Cameras by IPWizard II. Here is the way to execute IPWizard II to discover Camera's IP address and set up related parameter in a Camera.

When launch the IPWizard II, a searching window will pop up. IPWizard II is starting to search IP Cameras on the LAN. The existed devices will be listed as below.



Easy to Watch

IP-200PHD-24 takes full advantage of the network technology nowadays. By its build-in Web interface, monitoring is as simple as surfing on the Internet in our daily life. IP-200PHD-24 supports most popular web browsers included the Internet Explorer, Firefox, or even the one came with your iPhone. Once connect IP-200PHD-24 to the Internet, user can receive its video anytime, anywhere as long as he can access to the Internet.

Windows-based and Web-based Monitoring Utility

The Web-Based configuration allows users to make the configuration including the image monitoring, recording images to a hard drive, snapshots and many others via Intranet/or Internet in real time!

Versatile Application

The camera supports FTP, TCP/IP, SMTP, HTTP and many other Internet related protocols for remote surveillance. Intelligent motion detection enables optimal performance of video detection by capturing images and sending those images for e-mail notification.

With high sensitivity CMOS sensor, the IP-200PHD-24 constantly delivers superior image detail in most environments.

H.264, MPEG4 and Motion JPEG Compression Formats

The IP-200PHD-24 is a Passive PoE IP camera with Motion JPEG and MPEG-4 capabilities. Multi-Output streams allows for good compression performance with low bit rates and bandwidth requirements.

H.264 Video Compression

H.264 is a high performing video compression standard that boasts a much higher compression ratio than MJPEG or MPEG-4, drastically reducing file sizes and conserving valuable network bandwidth and storage space. With up to 90% reduction in file size, a 1 MB image can be drastically reduced to as low as 10KB using H.264. IP-200PHD-24 adopts this technology, and provides a more economical way to utilize your storage space.

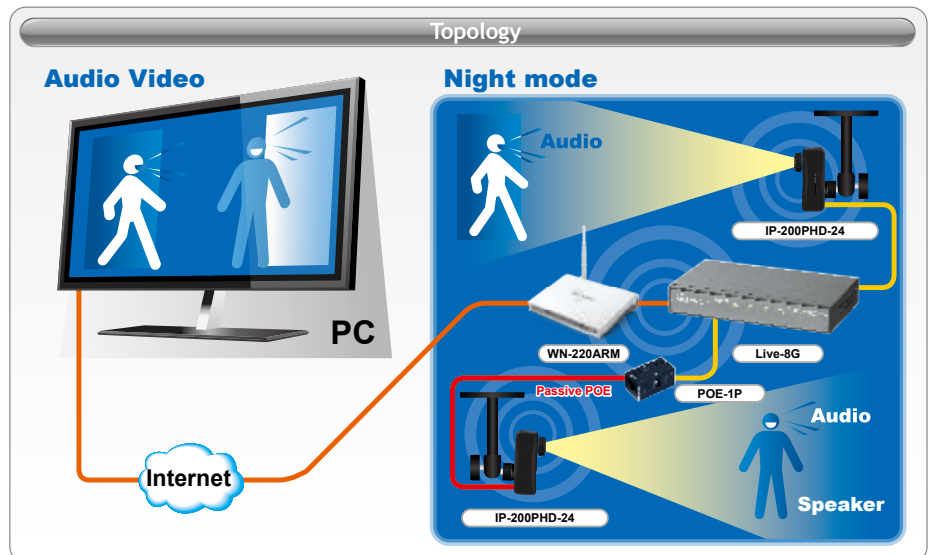
View from Mobile Phone

IP-200PHD-24 can deliver its video to the mobile phone via 3GPP function. Via this function, user can monitor his property through the 3G or 3.5G mobile network remotely. This is very useful when you are on your journey or business trip. What's more, user can also use the build-in browser of his smart phone, like the Safari of iPhone, for monitoring. By combining IP-200PHD-24 and your mobile phone can play the role as the Baby Monitor.

Support 2 Ways Audio

The IP-200PHD-24 Internet Camera takes video surveillance to another level by using 2-ways audio.

By connecting a powered speaker to the camera, you can now remotely talk to anyone at your camera site. And it also comes on the build-in microphone, so you can also hear the voice via the camera.



Web Monitor

The CamPro Express 64 allows you to monitor 64 channels via the computer and WEB UI. You can also choose to view the different camera in single view or 1/4/9/16/32/64 view.



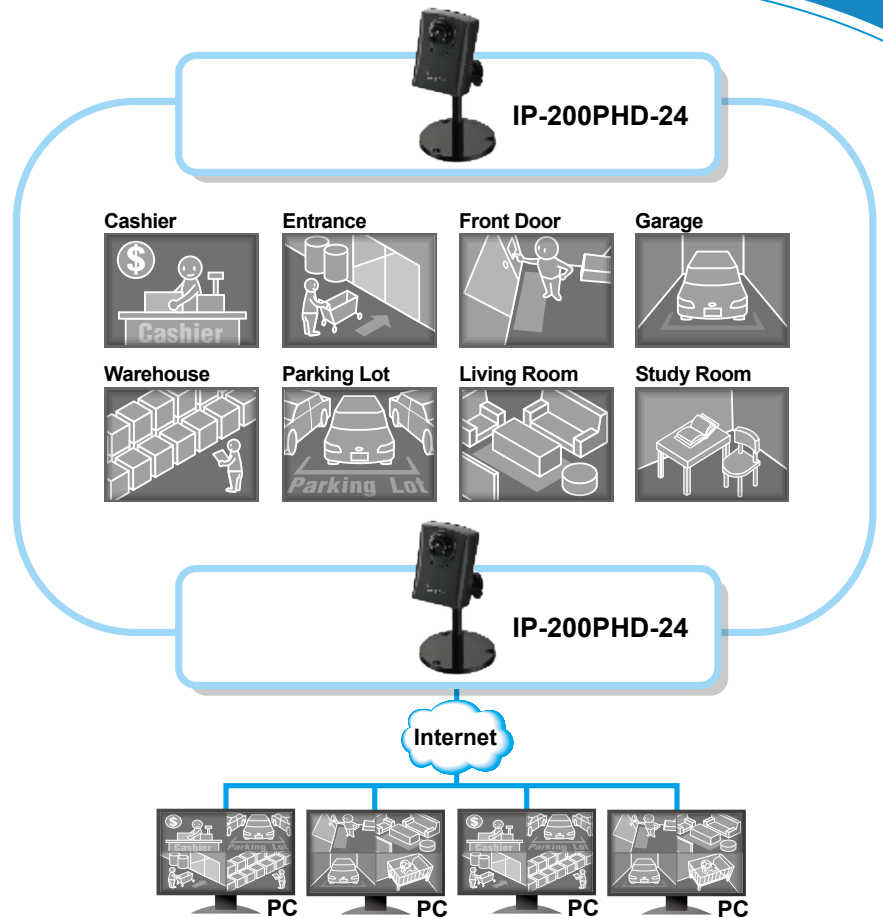
AirLive CamPro Mobile for iOS and Android

AirLive has released the CamPro Mobile apps for both iOS and Android system. It supports most of AirLive IP Cameras for live viewing and also supports two-way audio, snapshot and movement controls on PTZ cameras. You may download the software from App Store or Google Play. Please visit our FAQ page for more information.

*Two-way audio on AirLive CamPro Mobile currently is available on iOS devices only.

Professional Surveillance Software Supported

IP-200PHD-24 supports free 64 ch management software. With the bundle surveillance software, it lets user to view and record multiple live images at the same time. Using several IP-200PHD-24s with the software, user can easily build up a surveillance system at different environment. Moreover, IP-200PHD-24 also supports CamPro Professional, which is AirLive's intelligent video surveillance recording software. It is designed to meet most demands for professional installations. With its video analysis functions, such as tempering detection, user can build up a stable and efficient surveillance system.



Specifications

Model

- IP-200PHD-24

Description

- 2.0 Mega Pixel Passive PoE IPCamera

Image Device

- 2 Mega-Pixel image sensor

Effective Pixels

- 1600 x 1200 pixels

Sensitivity

- 1.0V/lux-sec

Signal to Noise

- 42.3dB

Lens

- 4.3mm

IP Module

Video

Video Encoder

- H.264, MPEG4 and Motion JPEG

Video Profile

- 9 Profiles Simultaneously

Frame Rate

- Up to 30fps @ 1280x720 mode (HD mode)
- Up to 15fps @ 1600x1200 mode (2 Mega-pixel mode)

Manufacturer

OvisLink Corp.

5F, No.96, Min-Chuan Rd., Hsin-Tien Dist., New Taipei City 231, TAIWAN

www.airlive.com

Image Setting

- AE, AWB
- Noise reduction
- Color, brightness, sharpness, contrast
- Mirror/Flip
- Privacy Masks
- Text, time and date overlay

Streaming

- Simultaneously Multi-Profile streaming
- Streaming over UDP, TCP, or HTTP
- M-JPEG streaming over HTTP (server push)
- Supports 3GPP mobile surveillance (MPEG4)
- Controllable frame rate and bandwidth
- Constant and variable bit rate (H.264)
- ROI

Audio

Audio Encoder

- RTSP: G.711 64kbps, G.726 32kbps
- 3GPP: AMR

Audio Streaming

- One-way or two-way

Microphone

- Built-in microphone

Audio Output

- Adjustable audio output gain

Network

Supported Protocols

- IPv4, TCP, UDP, HTTP, HTTPS, SMTP, FTP, NTP, DNS, DDNS, DHCP, DIPS, ARP, Bonjour, UPnP, RTSP, RTP, RTCP, IGMP, PPPoE, 3GPP, Samba, ICMP

Security

- Password protection, IP address filtering, HTTPS encrypted data transmission, user access log

Users

- 20 simultaneous unicast users

Ethernet

- 10/100M auto negotiation

System Integration

Application Programming Interface

- ONVIF
- Open API for software integration
- SDK

Alarm Triggers

- Intelligent video motion detection

Motion Detection

- 10-zone video motion detection with included or excluded options

Alarm Events

- File upload via FTP or email
- Notification via email, HTTP, and TCP
- Audio alerting output

Video Buffer

- Pre- and post- alarm buffering

General

RAM

- 128MB

ROM

- 16MB

Power Supply

- 12V DC external power adapter

Power Consumption

- 2W

Connectors

- RJ-45 10BaseT/100BaseTX

- DC power jack
- Audio out
- Factory default reset
- SD card (IP-200PHD-24 Only)

Operating Temperature

- 0°C to 40°C (32°F to 104°F)

Operating Humidity

- 20% ~ 80% (non-condensing)

Dimension

- HxWxD:74.5 x 52.6 x 35 (mm)

Viewing System

OS

- Windows® XP, Vista, 7

Browser

- IE 6.0 or later, Firefox 2.0 or later, Safari

Cell Phone

- With 3GPP player

Video Player

- VLC, Quick Time, Real Player, Core Player

Ordering Information:

AirLive IP-200PHD-24 2.0 Mega Pixel Passive PoE IPCamera

AirLive IP-200PHD-24B 2.0 Mega Pixel Passive PoE IPCamera Without SD and Support