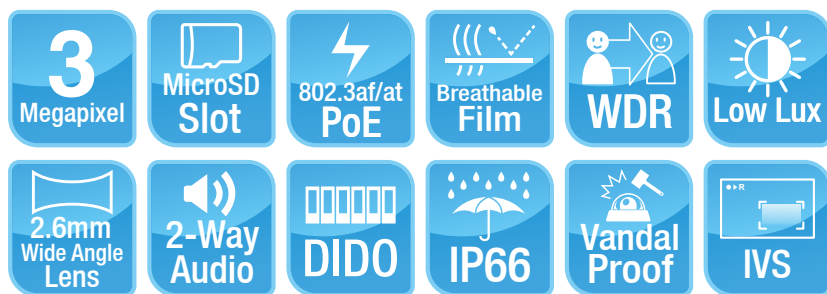


MD-3025-IVS

3-Megapixel IR Vandal Mini Dome IPCAM with Video Analytics

- Miniature Size Dome with Vandal Proof and IP-66 Protection
- Built-in Breathable Film
- Support 25FPS at 2048x1536 or 30FPS at 1080P
- 802.3af PoE Port
- 2.6mm Wide Angle Lens
- Low Lux Sensor for Ultra Bright Images
- 15m IR LEDs
- Mechanical IR-Cut Filter Removable
- MicroSD Card Slot for Local Storage
- Built-in MIC, Two-Way Audio, DI/DO
- Corridor Mode
- WDR Enhanced
- Video Stabilization
- Built-in Video Analytics Including Face Detection, iMotion Detection, Trip Zone, Object Counting, Face Recognition, e-Fence
- Free 64-Channel Recording Software



AirLive MD-3025-IVS IP Camera is the latest Mini Dome camera from AirLive. It combines 3-Megapixel video, wide angle lens, power over Ethernet, ICR, excellent image quality, IR night vision and intelligent video analytics into one compact size.

Mini Compact Size and 802.3af PoE

AirLive MD-3025-IVS is a mini-dome camera, mounted on the ceiling. With only 108mm in diameter and 62mm height, it is about the half size of a standard dome camera and makes it suitable for elevators, offices, shops, home, and public areas, and even on public transportations. Its 802.3af PoE port can also let you install the device away from the power source.

3-Megapixel Resolution and MicroSD Card Recording

AirLive MD-3025-IVS provides 3-megapixel High Definition resolution at 25 frames per second. That means the crisp and smooth video with full details.

Ultra Wide Lens and Adjustable Viewing Angle

AirLive MD-3025-IVS has 2.6mm (f/1.6) ultra wide angle lens that provides up to 105 degree horizontal wide angle view. While most mini dome cameras' lens angle can not be adjusted due to small size, the AirLive MD-3025-IVS' lens can be adjusted manually so you can change the view after installation.

IR Night Vision and IR-CUT Removable (ICR)

AirLive MD-3025-IVS is designed for 24hr indoor/outdoor surveillance even in the harshest conditions. AirLive MD-3025-IVS is equipped with high resolution CMOS sensor with infrared LEDs in up to 15m working distance. The auto-changeable IR filter also provides superior day/night performance.

Vandal Proof Housing with IP66 Waterproof Resistance

AirLive MD-3025-IVS owns the housing which has vandal proof and IP66 rating waterproof, so it can resist the malicious attack and the harsh climate.

Two-Way Audio and DIDO

With two-way audio feature, you have the ability to watch, hear and response remotely. Real-time over the Internet communication is simply by using the Standard Microsoft IE browser. In order to speak all you need is microphone and speaker at local and speaker only at the remote viewing location. It also support with DIDO for external sensor and alarm.

Clear Motion Technology

AirLive MD-3025-IVS has the Clear Motion Technology to minimize the motion blur caused by moving objects. So you can have the details where you need it.



Support WDR

When strong back light is surrounding a subject, camera with wide dynamic range technology can adjust the intense backlight and dark area to balance the whole screen; therefore, user can recognize the details in the bright and dark area.



Tampering Detection

The tampering detection function will provide alarm when AirLive MD-3025-IVS is under attack. For example, if the intruder tries to move it to the other side, AirLive MD-3025-IVS will recognize the attack and send out the alarm or trigger the digital output devices.



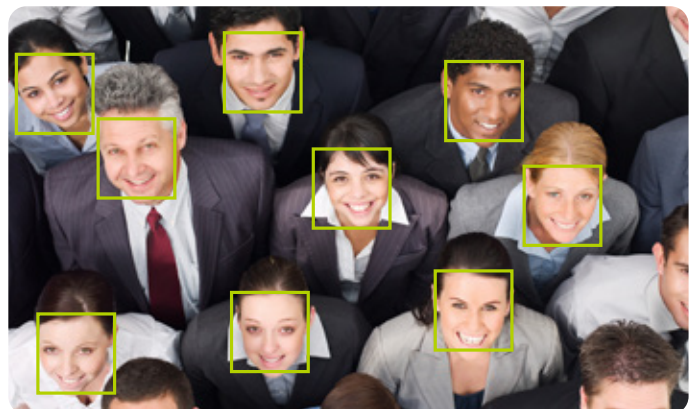
Intelligent Video Analytics

AirLive MD-3025-IVS provides multiple intelligent video analytics that helps you to save your human resources and reach the goal of automatic surveillance.

- * When IVS enabled, the resolution is limited to 2 Megapixel maximum. It is recommended to set the resolution to 1 Megapixel for best performance.
- * Please check our step-by-step guide for installations and limitations before making a purchase.

Face Detection

Face detection is a precise feature which needs highly accurate rate of recognition on human faces only. The software is able to count many faces in the image and also highlights those faces simultaneously so the administrator will be easier to look in detail on each face at a specific environment.





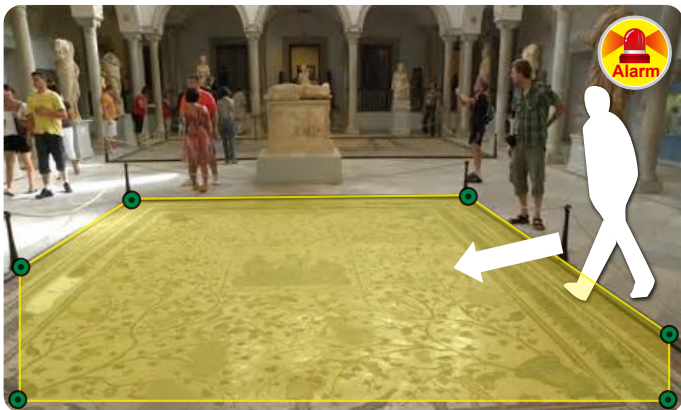
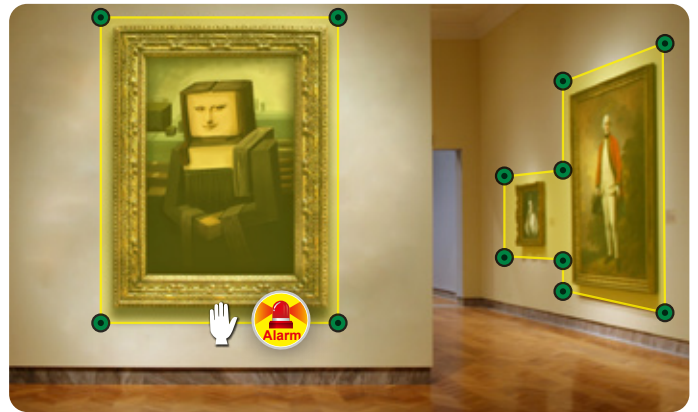
Face Recognition

The key feature of Face Recognition is to recognize faces for access control or any suspicious persons in camera which is matched to the database. You can save up to 10 face images to AirLive MD-3025-IVS for recognition, so when the camera catches the face which is matched the database, the camera will trigger the related output devices for necessary reaction.

* The face Recognition is limited to 10 faces maximum when used in standalone recognition mode. This limit can be increased when used as secondary guard with access control system.

iMotion Detection

Intelligent Motion Detection is able to increase accuracy of detection, and also provides more flexible settings with polygon for the detection area.

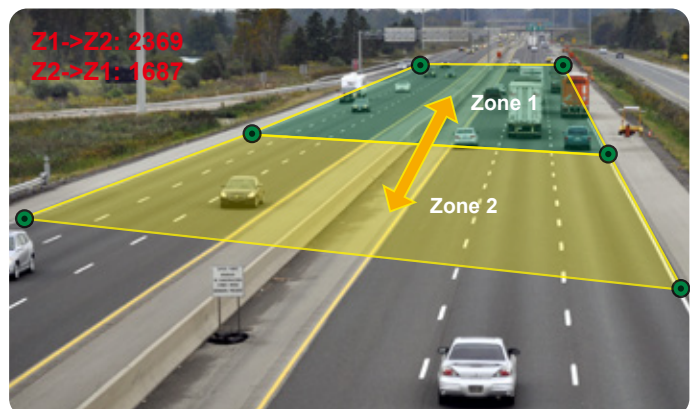


e-Fence

The eFence is an electronic fence protection system which is able to detect and send output alert if any object is entering or leaving the boundaries you set in the camera. eFence can be used in many applications, such as a standalone protection system, or other protection systems, like airports, power plants, radio towers or even military camps.

Object Counting

The Object Counting makes store owners easier to calculate the number of people in and out of the store. You may choose one way or two way directions for counting. The numbers can be displayed on screen and saved to the database. It is also useful to calculate the amount of traffic flow on the highway.

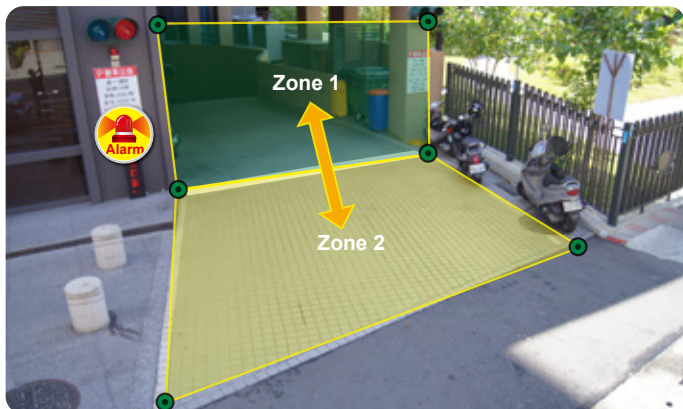


Manufacturer

OvisLink Corp.

9F, No.98, Min-Chuan Rd., Hsin-Tien Dist., New Taipei City 231, TAIWAN

www.airlive.com



Trip Zone

The Trip Zone is area protection based on two virtual areas with a line in center drawn in the software. When any object moves across the line, it will trigger MD-3025-IVS and send output alarm. It can be set to detect one direction or both directions. It is useful to protect walls, railroad platform, or parking lot entrance.

64-Channel Recording Software and IP Wizard

The surveillance software CamPro Express 64 lets user to view and record multiple live images at the same time. Using several supported Camera with CamPro Express 64, user can easily build up a surveillance system at different environment. Moreover, MD-3025-IVS also supports CamPro Professional, which is AirLive's intelligent video surveillance recording software. It is designed to meet most demands for professional installations. With its video analysis functions, such as tampering detection, user can build up a stable and efficient surveillance system.



APPS for Mobile Device

AirLive provides CamPro Mobile APP for iOS/Android device, so you can view multiple AirLive IP cameras by your mobile device. For more information, please visit to the APP store or Android market.

* The power adapter for this camera is optional on your demand.

Specifications

Camera

Camera Type

- Mini Dome Type

Max Resolution

- 2048x1536

Image Sensor

- 1/2.5" CMOS Sensor

Sensor Resolution

- 2048x1536

Lens Type

- Board Lens
- 2.6mm, F1.6

Night Vision

- Yes

Max IR Distance

- 15m

Minimum Illumination

- 0.2 Lux at F1.6 (Color)

Mechanical IR-Cut Filter

- Yes

Viewing Angle

- 105 °(D),
- 75 °(H),
- 54 °(V)

Pan/Tilt Control

- Lens Adjustment: Pan: 0~350°
- Lens Adjustment: Tilt: 53~106°

Video

Video Compression

- H.264
- MPEG-4
- MJPEG

Video Profile

- Yes

Resolution and Frame Rate

- 25 fps @ 2048 X 1536
- 30 fps @ 1920 X 1080
- 30 fps @ 1280 x 1024
- 30 fps @ 1280 x 960
- 30 fps @ 1280 X 720
- 30 fps @ 720 X 480
- 30 fps @ 640 X 480
- 30 fps @ 320 X 240
- 30 fps @ 160 X 120

Streaming

- Streaming over UDP, TCP, or HTTP
- 3GPP mobile view
- Configurable frame rate and bandwidth
- Support both CBR and VBR

Region of Interest

- Yes

Image Processing

- AE, BLC, AW
- Brightness, sharpness, contrast, saturation
- Mirror/Flip
- Privacy Masks
- Text, time and date OSD

Digital Zoom

- 10x

Audio

Audio Encoder

- G.711 / AMR (Only for 3GPP)

Audio Streaming

- Two-way

Audio Input/Output

- Built-in microphone, 1 Line out

Network

Ethernet

- Ethernet (10/100 Base-T), RJ-45

PoE

- IEEE802.3af

Supported Protocols

- TCP/IP, IPv6, UDP, ICMP, DHCP, NTP, DNS, DDNS, SMTP, FTP, HTTP, HTTPS, Samba, PPPoE, UPnP, Bonjour, RTP, RTSP, RTCP, DLNA, iSCSI, OnVIF Profile S

Security

- Password protection
- IP filter, HTTPS encrypted data transmission

Users

- Up to 10 simultaneous users

LED and Button

Power LED

- Yellow Color

Link/Act. LED

- Orange Color

Reset Button

- Reboot and Factory Default (Push and Hold Over 5 Sec)

General

Network Processor

- DSP Base

System ROM

- 128M byte NAND Flash

System RAM

- 128M byte DDR SDRAM

Power Supply

- Optional (12V DC 1.08A)

Power Consumption

- IR on: 6 Watts max. , IR off: 4 Watts max.

Connector

- RJ-45 10BaseT/100BaseTX
- Audio, DI/DO, DC jack, Ethernet/PoE

Environment

- Temperature: -20°C ~ 55°C (-4°F ~ 131°F)
- Humidity: 20% ~ 85%

SD card slot

- MicroSD

Dimension

- Ø: 108 mm x 62 mm

System Integration

Software

- CamPro Express 64, CamPro Professional
- Search & Installation-IP Wizard II
- AirLive CamPro Mobile

Event Triggers

- Motion detection, External input via DI interface, Tamper Detection, Periodically Time, SD Card Read/Write Fail Detection, Network Disconnect, Audio Detection, Face Detection, iMotion Detection, Trip Zone, Object Counting, Face recognition, e-Fence.

Motion Detection

- 3

Event handler

- FTP, Samba Server, SD card file upload, Google Drive, Dropbox
- E-mail alert
- HTTP, and TCP notification
- DO (digital output) alarm
- Audio File Playback

UPNP

- Yes

Application Programming Interface

- OnVIF Profile S
- Open API for software integration
- SDK

Video Buffer

- Pre- and post- alarm buffering

Alarm Triggers

- Motion detection, External input via DI interface, Tamper Detection, Periodically Time, SD Card Read/Write Fail Detection, Network Disconnect, Audio Detection, Face Detection, iMotion Detection, Trip Zone, Object Counting, Face recognition, e-Fence.

Continuous recording

- Yes

Intelligent Video Analytics(IVS)**Build in IVS function**

- Face detection
- iMotion detection
- Trip zone
- Object counting
- Face recognition
- e-Fence

Viewing System**OS**

- Windows® XP, Vista, 7, 8

Browser

- Internet Explorer 8 or later; Apple Safari 2 or above; Firefox 2.00 or above; Google Chrome

iOS/Android Device

- With 3GPP player, CamPro Mobile for iOS/Android device

Video Player

- VLC, Quick Time, Real Player, Core Player

Ordering Information:

AirLive MD-3025-IVS 3-Megapixel IR Vandal Mini Dome IPCAM with Video Analytics