

## OD-2025HD

### 2-MegaPixel Outdoor 30fps 25 meter IR IPCAM

The AirLive OD-2025HD is a high-end 2.0 MegaPixel (MP) network camera which designs for professional outdoor surveillance and security applications. This 2.0MP IP camera offers much improvements in image quality when compares to conventional surveillance cameras. Users are able to view live video streaming over the Internet, and it is only one of benefits for using AirLive OD-2025HD. It is also designed to offer high-performance surveillance and is equipped with PoE port which allows power and data to be transmitted via a single Ethernet cable. This useful function provides an easier installation, lower cabling costs and allows placement of AirLive PoE cameras in locations without access to electrical source. With the IP-66 waterproof housing, AirLive OD-2025HD suits for environments such as stairs, main entrance, street, and basement.



### 2.0 Mega-Pixel Video Quality 6X Bigger than VGA Resolution

The AirLive OD-2025HD offers high quality image at a maximum resolution of 1080p@30fps - 6X higher resolution than a normal CCTV Camera. One of the most compelling advantages of 2 Mega Pixel surveillance systems is the ability to capture sharp videos, with more details per frame and not miss out on any finer details that are useful for license plate identification and human recognition. The new CMOS sensor also provides smoother video quality @30fps performance; the image will be better when compare with older 15fps video cameras.



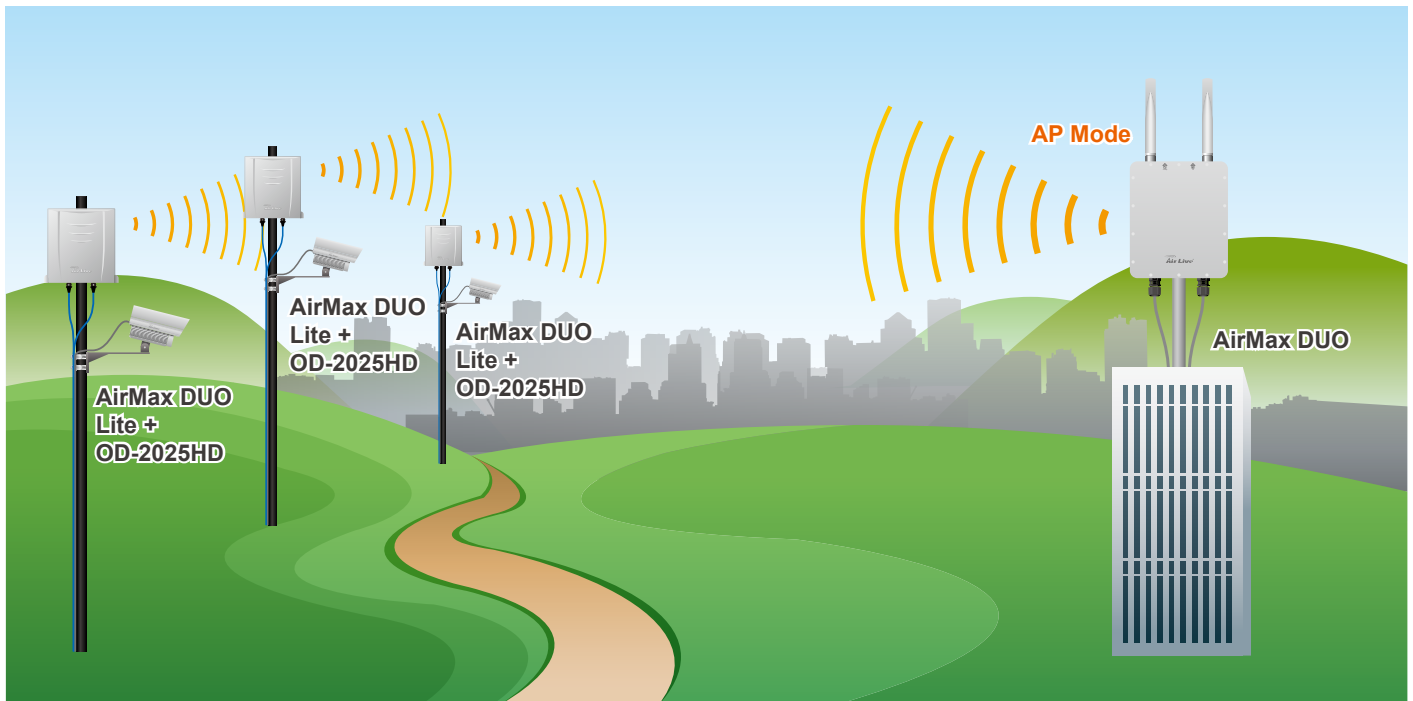
## Support WDR

When strong back light is surrounding a subject, camera with wide dynamic range technology can adjust the intense backlight and dark area to balance the whole screen; therefore, user can recognize the details in the bright and dark area.



## Viewing Crystal Clear Live Image from Distant Location

Remote monitoring is always the main focus of IP camera. This objective has been achieved and more with AirLive OD-2025HD now. Users are able to use various supported internet protocols such as FTP, TCP/IP, SMTP, HTTP and RTSP to gain access of AirLive OD-2025HD from afar location. AirLive OD-2025HD uses H.264 video compression to drastically reducing file sizes and conserving valuable network bandwidth and storage space. H.264 is a high performing video compression standard that boasts a much higher compression ratio than MJPEG or MPEG-4. With this technology, there is 90% reduction in file size, a 1 MB image can be drastically reduced to as low as 10KB using H.264. With AirLive OD-2025HD versatile application and function, it is the perfect answer to remotely monitoring your home and properties while out traveling.



## Support 24 Infrared LEDs Upto 25 Meters Distance

AirLive OD-2025HD is designed for 24hr indoor/outdoor surveillance even in the harshest conditions. AirLive OD-2025HD is equipped with high resolution CMOS sensor with infrared LEDs with up to 25m working distance. The auto-changeable IR filter inside also provides superior day/night performance. It also offers many important features such as PoE and digital input and output for external alarm & sensor.

## 2-Way Audio Communication

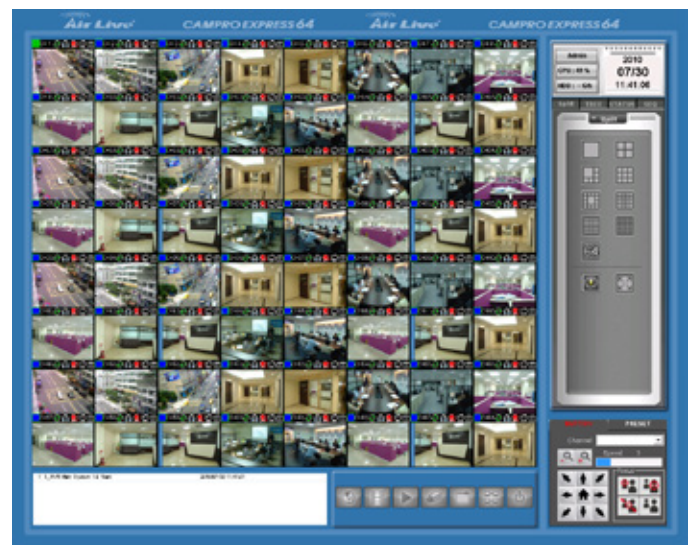
AirLive OD-2025HD supports 2-way audio by using the extend microphone and separate computer speakers which allows for real-time voice communication between the camera and PC.

## APPS for Android and iOS

AirLive has worked with IPCAM Viewer developer to add support for AirLive IPCAM. So you can view multiple AirLive cameras using Android device, iPhone, or iPad. For more information about Android or iOS apps, please visit the FAQ page.

## Professional Surveillance Software Supported

AirLive OD-2025HD also supports CamPro Express 64, the bundled surveillance software that lets user to view and record multiple live images at the same time. Using several AirLive OD-2025HD with CamPro Express 64, user can easily build up a surveillance system with desired scenario at different locations and environments. Moreover, OD-2025HD also supports CamPro Professional, which is AirLive's intelligent video surveillance recording software. It is designed to meet most demands for professional installations. With its video analysis functions, such as tempering detection, user can build up a stable and efficient surveillance system.



### Specifications

#### Camera

##### Camera Type

- Outdoor Bullet Type

##### Image Sensor

- 1/2.7" 2 Mega Pixel Color CMOS Sensor

#### Sensor Resolution

- 1920X1080

#### Lens Type

- Board Lens  
- 4.3mm, F1.8

### **Night Vision**

- Yes

### **Max IR Distance**

- 25M

### **Minimum Illumination**

- 0 Lux with LEDs on

### **Mechanical IR-Cut Filter**

- Built-In Removable IR Cut Filter

### **Viewing Angle**

- 61°56' (H)
- 48°27' (V)
- 73°44' (D)

### **Analog Video Out**

- Yes

## **Video**

### **Video Compression**

- H.264, MPEG4, MJPEG

### **Video Profile**

- 20

### **Resolution and Frame Rate**

- 1920x1080 @ 30 fps
- 1280x720 @ 30 fps
- 640x360 @ 30 fps
- 320x180 @ 30 fps
- 160x90 @ 30 fps

### **Streaming**

- Multi-profile streaming
- Streaming over UDP, TCP, or HTTP
- M-JPEG streaming over HTTP (for non IE browser)
- 3GPP mobile view

- Configurable frame rate and bandwidth
- Support both CBR and VBR
- ROI

### **Region of Interest**

- Up to 5 configurable region

### **Image Processing**

- AE, AWB
- Noise reduction
- Color, brightness, sharpness, contrast, Hue
- Mirror/Flip
- Privacy Masks
- Text, time and date OSD

### **Digital Zoom**

- 10X

## **Audio**

### **Audio Encoder**

- RTSP: G.711 64kbps, G.726 32kbps
- 3GPP: AMR

### **Audio Streaming**

- Two-way

### **Audio Input/Output**

- speaker and microphone port

## **Network**

### **Ethernet**

- One RJ45 Port; IEEE 802.3u Compliant 10/100 Mbps Fast Ethernet with Auto-MDIX

### **PoE or Wireless**

- IEEE802.3af

### **Supported Protocols**

- TCP/IP, UDP, ICMP, DHCP, NTP, DNS, DDNS, SMTP, FTP, HTTP, HTTPS, Samba, PPPoE, UPnP, Bonjour, RTP, RTSP and RTCP

### Security

- Password protection
- IP filter
- HTTPS

### Users

- Up to 20 simultaneous users

### LED and Button

#### Power LED

- Amber Color

#### Link/Act. LED

- Green Color

#### Reset Button

- Reboot and Factory Default (Push and Hold Over 8 Sec)

### General

- Network Processor
- DSP Base

### System ROM

- 16MByte NAND Flash

### System RAM

- 256Mbyte DDR SDRAM

### Power Supply

- DC12V

### Power Consumption

- 9 Watts Max.

### Connector

- RJ-45 10BaseT/100BaseTX
- 12V DC power jack
- Microphone/Speaker jack
- Composite video out
- Reset button

### Environment

- Operation: Temp: -10°C ~ 50°C Humidity: 20% ~ 80% non-condensing
- Storage: Temp: -15°C ~ 60°C Humidity: 0% ~ 90% non-condensing

### Dimension

- HxWxD:159x100x95 mm

### System Integration

#### Software

- Campro Express 64,Campro Professional
- Search & Installation-IP Wizard II

#### Event Triggers

- Motion detection
- External input via DI interface

#### Motion Detection

- 10

#### Event handler

- FTP or NAS file upload
- E-mail alert
- HTTP, and TCP notification
- DO (digital output) alarm

#### UPNP

- Yes

#### Application Programming Interface

- ONVIF
- Open API for software integration
- SDK

#### Video Buffer

- Pre- and post- alarm buffering

#### Alarm Triggers

- Intelligent video motion detection and external input

#### Alarm Events

- File upload via FTP or email
- Notification via email, HTTP, and TCP
- External output activation
- Audio alerting output

#### Viewing System

##### OS

- Windows<sup>®</sup> XP, Vista, 7

##### Browser

- IE 6.0 or later, Firefox 2.0 or later, Safari

#### Cell Phone

- With 3GPP player

#### Video Player

- VLC, Quick Time, Real Player, Core Player

#### Ordering Information:

**AirLive OD-2025HD** 2-MegaPixel Outdoor 30fps 25 meter IR IPCAM - Gray

**AirLive OD-2025HD** 2-MegaPixel Outdoor 30fps 25 meter IR IPCAM - White

The image is for reference only; the actual color is based on the real product.