

OD-600HD

H.264 1.3 MegaPixel PTZ Vandal Proof Dome

The AirLive OD-600HD is a high-end 1.3 MegaPixel network camera designed for professional outdoor surveillance and security applications. MegaPixel (MP) IP cameras offer improvements in image quality compared to conventional surveillance cameras. The possibility to view live video streaming from AirLive IP Cameras over the Internet is only one of the benefits. AirLive OD-600HD is designed to offer high-performance surveillance and is equipped with PoE port, allowing power and data to be transmitted via a single Ethernet cable. This provides an easier installation, lower cabling costs and allows placement of AirLive PoE cameras in locations without access to electrical source.



H.264 Compression

H.264 is a high performing video compression standard that boasts a much higher compression ratio than MJPEG or MPEG-4, drastically reducing file sizes and conserving valuable network bandwidth and storage space. With up to 90% reduction in file size, an 1 MB image can be drastically reduced to as low as 10KB using H.264.

Vandal Proof Housing with IP65 Waterproof Resistance

AirLive OD-600HD is an IP65 rated weather proof IP camera designed for 24hr indoor/outdoor surveillance under the harshest conditions. OD-600HD toughened glass and vandal proof housing provides protection against the intrusion of burglar, dust, accidental contact, and water.



Outdoor Mounting Kits for AirLive OD-600HD

The WMK-600 Outdoor L-Type Wall Mounting Kit provides protection for AirLive network cameras in uncovered outdoor environment. Its for the OD-600HD PTZ Dome Network Cameras and fixed dome pendant kits. Its IP65-rated feature protects the camera body against rain and dust and ensures operation under poor weather conditions. Furthermore, the metal vandal-proof housing effectively provides robust protection from vandalism.

Manufacturer

OvisLink Corp.

5F, No.96, Min-Chuan Rd., Hsin-Tien Dist., New Taipei City 231, TAIWAN

www.airlive.com



1.3 Mega-Pixel Video Quality

AirLive OD-600HD offer high quality image at maximum 1280x1024 resolution. One of the most compelling advantages of MegaPixel surveillance systems is their ability to capture more details in a frame and at the same time not missing any finer details that are useful for license plate identification and human recognition.

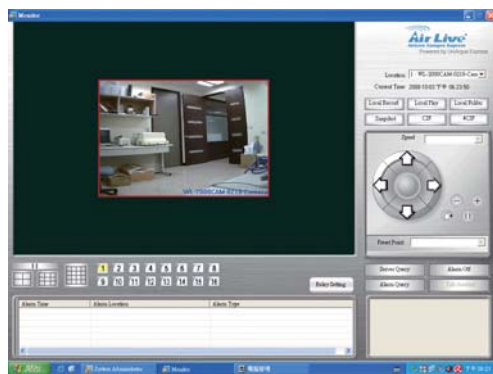
* Red box is standard 640X480 image resolution. The OD-600HD offer 4 times bigger image size compare to VGA camera.

Pan and Tile Function

The OD-600HD is an advanced PoE IP camera with Pan and Tilt function. You can set a particular patrol area; it will then move its lens in both horizontal and vertical direction continuously to scan the area. Or you can remote control the camera to look in the desirable direction. Furthermore OD-600HD offer zoom function which enable you to observe even the finest details. It also offers many important features such as PoE and digital input and output for external alarm & sensor.

Professional Surveillance Software Supported

OD-600HD also supports CamPro Express, the bundle surveillance software that lets user to view and record multiple live images at the same time. Using several OD-600HD s with CamPro Express, user can easily build up a surveillance system at different environment. Moreover, OD-600HD also supports CamPro Professional, which is AirLive's intelligent video surveillance recording software. It is designed to meet most demands for professional installations. With its video analysis functions, such as tempering detection, user can build up a stable and efficient surveillance system.



APPS for Android and iOS

AirLive has worked with IPCAM Viewer developer to add support for AirLive IPCAM. So you can view multiple AirLive cameras using Android device, iPhone, or iPad. For more information about Android or iOS apps, please visit the FAQ page.

Web Monitor

The CamPro Express allows you to monitor 64 channels via the computer and WEB UI. You can also choose to view the different camera in single view or 1/4/9/16/32/64 view.



Specifications

Hardware

Image Device

- 1.3 MegaPixel image sensor

Effective Pixels

- 1280 x 1024 pixels

Sensitivity

- 1.0V/lux-sec (550nm)

Signal to Noise

- 44dB

Lens

- f:4.3mm / F:1.8

Pan & Tilt

Pan Degree

- 355°

Tilt Degree

- 10~90°

Preset Points

- 128 preset points (maximum)

Camera Tour

- 16 tours

IP Module

Video

Video Encoder

- H.264, MPEG4 and Motion JPEG simultaneously (Tri-encoders)

Video Profile

- 11 profiles simultaneously
- H.264 SXGA/ VGA / QVGA / QQVGA
- MPEG4 VGA / QVGA / QQVGA
- M-JPEG SXGA/ VGA / QVGA / QQVGA

Frame Rate

- Mega-pixel mode: Up to 15fps for all 11 profiles
- VGA mode: Up to 30fps for all 9 profiles

Image Setting

- De-noise
- Brightness, sharpness, contrast text, time and date overlay

Streaming

- Simultaneously multi-profile streaming
- Streaming over UDP, TCP, or HTTP
- Multicast streaming
- M-JPEG streaming over HTTP
- Supports 3GPP mobile surveillance
- Controllable frame rate and bandwidth
- Constant and variable bit rate (MPEG4 / H.264)

Audio

Audio Encoder

- RTSP: G.711 64kbps, G.726 32kbps
- 3GPP: AMR

Audio Streaming

- One-way or two-way

Microphone

- External microphone

Audio Output

- Line level out

Network

Supported Protocols

- TCP, UDP, HTTP, SMTP, FTP, NTP, DNS, DDNS, DHCP, ARP, Bonjour, UPnP, RTSP, RTP, RTCP, PPPoE, 3GPP, ICMP, IGMP, SAMBA

Security

- Password protection, IP address filtering, user access log

Users

- 20 simultaneous unicast users
- Unlimited users using multicast

Ethernet

- 10/100M auto negotiation

System Integration

Application Programming Interface

- Open API for software integration
- SDK

Alarm Triggers

- Intelligent video motion detection and external input

Motion Detection

- 10-zone video motion detection

Alarm Events

- File upload via FTP, SAMBA or emailNotification via email, HTTP, and TCP
- External output activation
- Go to PTZ preset position
- Audio alerting output

Video Buffer

- Pre- and post- alarm buffering

General

RAM

- 128MB

ROM

- 8MB

Power Supply

- 12V DC external power adapter

PoE

- IEEE 802.3af (for wired model only)

Power Consumption

- 5W max

Connectors

- RJ-45 10BaseT/100BaseTX
- DC jack
- Audio in/out
- 1 alarm input and 1 output

Indication LED

- Two LEDs on the LAN socket

Protection Class

- Vandal, Indoor use

Operating Temperature

- 0°C to 40°C (32°F to 104°F)

Operating Humidity

- 20% ~ 80% (non-condensing)

Viewing System

OS

- Windows® XP, Vista

Browser

- IE 6.0 or latter / Firefox 2.0 or later

Cell Phone

- With 3GPP player

Video Player

- VLC, Quick Time, Real Player

Software

Search & Installation

- IPWizard II

Bundled NVR Program

- CamPro express 32 Channels Surveillance System

Ordering Information:

AirLive OD-600HD H.264 1.3 MegaPixel PTZ Vandal Proof Dome