

POE-100HD

PoE DC Iris 1.3 MegaPixel IP Camera

The PoE-100HD is a MegaPixel degree box type IP camera. Equipped with a 1.3 MegaPixel CMOS sensor, PoE-100HD can provide image resolution up to 1280 x 1024, and gives the user a clearer and more detailed live video for monitoring. Adopting H.264 as one of its video compression method, PoE-100HD supplies an efficient way to save the network bandwidth and storage space. PoE-100HD also supports DC IRIS and C/CS mount lens, and hence extends its usage in most locations, such as lobbies, stores, parking lots or even street corner. PoE-100HD is the best choose for small to large IP surveillance system.



H.264 Compression

H.264 is a high performing video compression standard that boasts a much higher compression ratio than MJPEG or MPEG-4, drastically reducing file sizes and conserving valuable network bandwidth and storage space. With up to 90% reduction in file size, an 1 MB image can be drastically reduced to as low as 10KB using H.264.



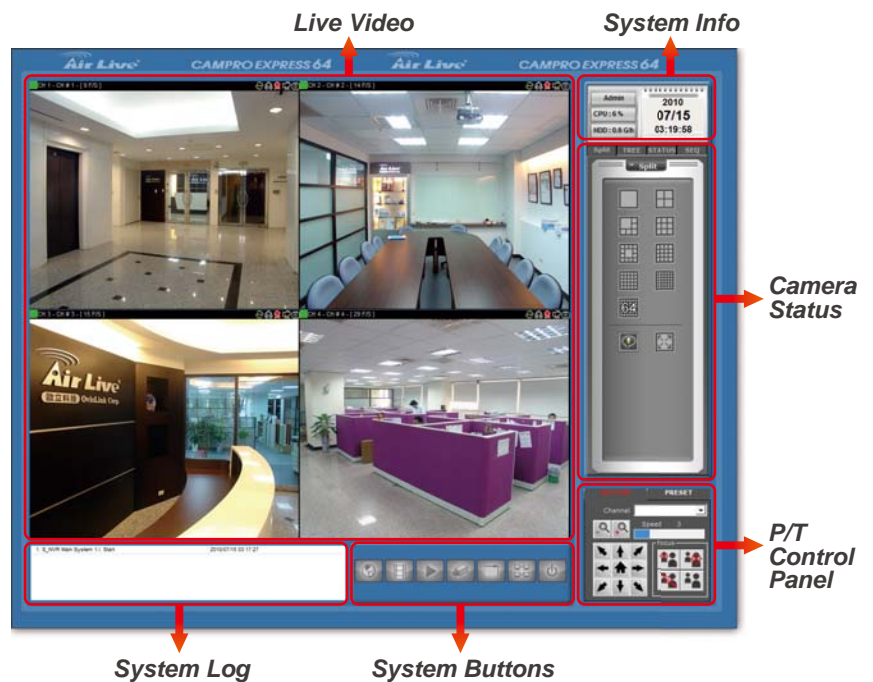
1.3 Mega-Pixel Video Quality

AirLive POE-100HD offer high quality image at maximum 1280x1024 resolution. One of the most compelling advantages of MegaPixel surveillance systems is their ability to capture more details in a frame and at the same time not missing any finer details that are useful for license plate identification and human recognition.

* Red box is standard 640X480 image resolution. The POE100HD offer 4 times bigger image size compare to VGA camera.

Professional Surveillance Software Supported

PoE-100HD also supports CamPro Express, the bundle surveillance software that lets user to view and record multiple live images at the same time. Using several PoE-100HD s with CamPro Express, user can easily build up a surveillance system at different environment. Moreover, POE-100HD also supports CamPro Professional, which is AirLive's intelligent video surveillance recording software. It is designed to meet most demands for professional installations. With its video analysis functions, such as tempering detection, user can build up a stable and efficient surveillance system.

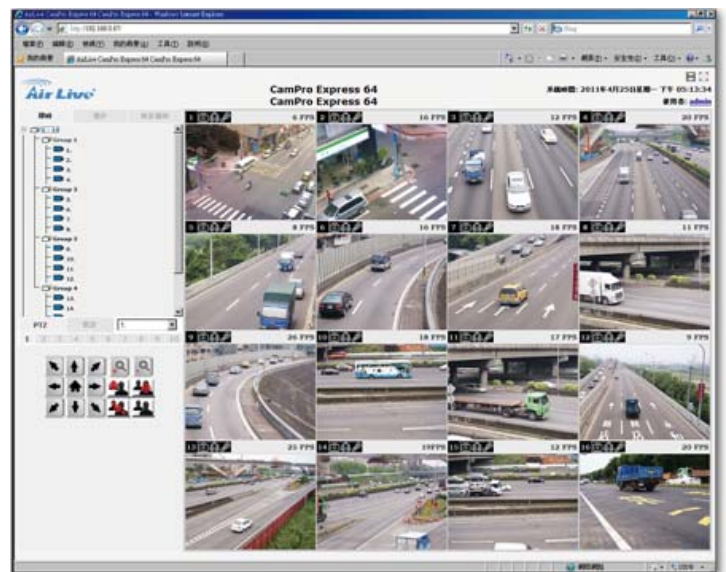


APPS for Android and iOS

AirLive has worked with IPCAM Viewer developer to add support for AirLive IPCAM. So you can view multiple AirLive cameras using Android device, iPhone, or iPad. For more information about Android or iOS apps, please visit the FAQ page.

Web Monitor

The CamPro Express allows you to monitor 64 channels via the computer and WEB UI. You can also choose to view the different camera in single view or 1/4/9/16/32/64 view.



Specifications

Hardware

Image Device

- 1.3 Mega-pixel image sensor

Effective Pixels

- 1280 x 1024 pixels

Sensitivity

- 1.0V/lux-sec (550nm)

Signal to Noise

- 44dB

Lens

- F:1.8 ; f:4.3mm, C/CS mount (optional)

IRIS Control

- DC IRIS

IP Module

Video

Video Encoder

- H.264, MPEG4 and Motion JPEG simultaneously (Tri-encoders)

Video Profile

- 11 profiles simultaneously
- H.264 SXGA/ VGA / QVGA / QQVGA
- MPEG4 VGA / QVGA / QQVGA
- M-JPEG SXGA/ VGA / QVGA / QQVGA

Frame Rate

- Mega-pixel mode: Up to 15fps for all 11 profiles
- VGA mode: Up to 30fps for all 9 profiles

Image Setting

- De-noise
- Brightness, sharpness, contrast text, time and date overlay

Streaming

- Simultaneously multi-profile streaming
- Streaming over UDP, TCP, or HTTP
- Multicast streaming
- M-JPEG streaming over HTTP
- Supports 3GPP mobile surveillance
- Controllable frame rate and bandwidth
- Constant and variable bit rate (MPEG4 / H.264)

Audio

Audio Encoder

- RTSP: G.711 64kbps, G.726 32kbps
- 3GPP: AMR

Audio Streaming

- One-way or two-way

Microphone

- Built-in microphone

Audio Output

- Line level out

Network

Supported Protocols

- TCP, UDP, HTTP, HTTPS, SMTP, FTP, NTP, DNS, DDNS, DHCP, ARP, Bonjour, UPnP, RTSP, RTP, RTCP, PPPoE, 3GPP, ICMP, Samba

Security

- Password protection, IP address filtering, user access log

Users

- 20 simultaneous unicast users
- Unlimited users using multicast

Ethernet

- 10/100M auto negotiation

System Integration

Application Programming Interface

- Open API for software integration
- SDK

Alarm Triggers

- Intelligent video motion detection and external input

Motion Detection

- 10-zone video motion detection

Alarm Events

- File upload via FTP or email
- File upload to NAS via Samba protocol
- Notification via email, HTTP, and TCP
- External output activation
- Go to PTZ preset position
- Audio alerting output

Video Buffer

- Pre- and post- alarm buffering

General

RAM

- 128MB

ROM

- 8MB

Power Supply

- 12V DC external power adapter

PoE

- IEEE 802.3af

Power Consumption

- 4W max

Connectors

- RJ-45 10BaseT/100BaseTX
- DC jack
- 1 alarm input and 1 output
- Audio in/out
- RS485
- Audio out
- DC IRIS

Indication LED

- Two LEDs

Protection Class

- Indoor use

Operating Temperature

- 0°C to 40°C (32°F to 104°F)

Software

Search & Installation

- IPWizard-2

Bundled Program

- Cam Pro express 32 Channels Surveillance System

Ordering Information:

AirLive POE-100HD PoE DC Iris 1.3 MegaPixel IP Camera