

## POE-200HD-4MM

### H.264 1.3 MegaPixel POE Dome

The AirLive POE-200HD is a high-end 1.3 -megapixel network camera designed for professional indoor surveillance and security applications. Megapixel (MP) IP cameras are now available that offer a huge jump in image quality compared to conventional surveillance cameras. This new model complements an architecture and software that is based on variations for professional indoor surveillance and security applications. The possibility to view video from AirLive IP Cameras over the Internet is only one of the benefits. AirLive POE-200HD is designed to offer high-performance and is equipped with PoE port, ensuring to power IP camera and provide network activity via one RJ45 network cable. This provides an easier installation and lower cable costs and allows placement of Airlive POE cameras in locations with power limitation.



### H.264 Compression

H.264 is a high performing video compression standard that boasts a much higher compression ratio than MJPEG or MPEG-4, drastically reducing file sizes and conserving valuable network bandwidth and storage space. With up to 90% reduction in file size, an 1 MB image can be drastically reduced to as low as 10KB using H.264.



### 1.3 Mega-Pixel Video Quality

AirLive POE-200HD offer high quality image at maximum 1280x1024 resolution. One of the most compelling advantages of MegaPixel surveillance systems is their ability to capture more details in a frame and at the same time not missing any finer details that are useful for license plate identification and human recognition.

\* Red box is standard 640X480 image resolution.  
The POE-200HD offer 4 times bigger image size compare to VGA camera.

## Professional Surveillance Software Supported

PoE-200HD also supports CamPro Express, the bundle surveillance software that lets user to view and record multiple live images at the same time. Using several PoE-200HD s with CamPro Express, user can easily build up a surveillance system at different environment. Moreover, POE-200HD-4MM also supports CamPro Professional, which is AirLive's intelligent video surveillance recording software. It is designed to meet most demands for professional installations. With its video analysis functions, such as tempering detection, user can build up a stable and efficient surveillance system.

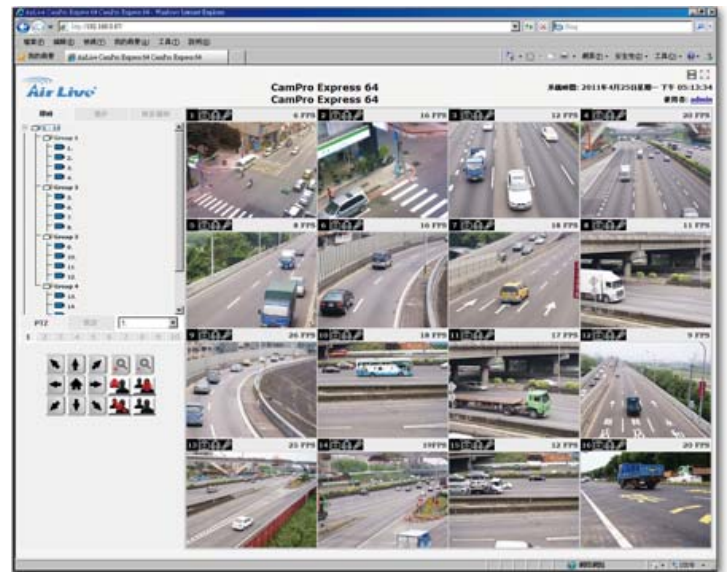


## APPS for Android and iOS

AirLive has worked with IPCAM Viewer developer to add support for AirLive IPCAM. So you can view multiple AirLive cameras using Android device, iPhone, or iPad. For more information about Android or iOS apps, please visit the FAQ page.

## Web Monitor

The CamPro Express allows you to monitor 64 channels via the computer and WEB UI. You can choose how you would like to view the camera, the Cam Pro Express supports 1/4/9/16/32/64 different view. You can also choose to view the different camera in single view or 1/4/9/16/32/64 view.



## Specifications

### Hardware

#### Image Device

- 1.3 Mega-pixel image sensor

#### Effective Pixels

- 1280 x 1024 pixels

#### Sensitivity

- 1.0V/lux-sec (550nm)

#### Signal to Noise

- 44dB

#### Lens

- 4mm fixed lens

### IP Module

#### Video

##### Video Encoder

- H.264, MPEG4 and Motion JPEG simultaneously (Tri-encoders)

##### Video Profile

- 11 profiles simultaneously
  - H.264 SXGA/ VGA / QVGA / QQVGA
  - MPEG4 VGA / QVGA / QQVGA
  - M-JPEG SXGA/ VGA / QVGA / QQVGA

##### Frame Rate

- Mega-pixel mode: Up to 15fps
- VGA mode: Up to 30fps

##### Image Setting

- De-noise
- Brightness, sharpness, contrast, time and date overlay

##### Streaming

- Simultaneously multi-profile streaming
- Streaming over UDP, TCP, or HTTP

- Multicast streaming
- M-JPEG streaming over HTTP
- Supports 3GPP mobile surveillance
- Controllable frame rate and bandwidth
- Constant and variable bit rate (MPEG4 / H.264)

### Audio

#### Audio Encoder

- RTSP: G.711 64kbps, G.726 32kbps
- 3GPP: AMR

#### Audio Streaming

- two-way

#### Microphone

- Build-in microphone connector

#### Audio Output

- Line level out

### Network

#### Supported Protocols

- TCP, UDP, HTTP, SMTP, FTP, NTP, DNS, DDNS, DHCP, ARP, Bonjour, UPnP, RTSP, RTP, RTCP, PPPoE, 3GPP, ICMP, Samba

#### Security

- Password protection, IP address filtering, user access log

#### Users

- 20 simultaneous unicast users
- Unlimited users using multicast

#### Ethernet

- 10/100M auto negotiation

### System Integration

#### Application Programming Interface

- Open API for software integration
- SDK

### Alarm Triggers

- Intelligent video motion detection and external input

### Motion Detection

- 10-zone video motion detection

### Alarm Events

- Event server: FTP server, SMTP server, Samba server. File upload video clip or snapshot
- Notification via email, HTTP, and TCP
- External output activation Go to PTZ preset position (RS485)
- Audio alerting output

### Video Buffer

- Pre- and post- alarm buffering

### General

#### Power Supply

- 12V/1A DC external power adapter

#### Power over Ethernet

- Built in 02.3af PoE splitter

#### Power Consumption

- 5W max

#### Connectors

- RJ-45 10BaseT/100BaseTX,
- DC jack
- 1 alarm input and 1 output
- Audio in/out
- RS485 to connect to P/T scanner

#### Indication LED

- Two-Color LED

### Protection Class

- Indoor use

### Operating Temperature

- 0°C to 40°C (32°F to 104°F)

### Operating Humidity

- 20% ~ 80% (non-condensing)

### Viewing System

#### OS

- WindowsR XP, Vista

#### Browser

- IE 6.0 or latter / Firefox 2.0 or later

#### Cell Phone

- With 3GPP player

#### Video Player

- VLC, Quick Time, Real Player

### Software

#### Search & Installation

- IPWizard II

#### Bundled NVR Program

- Cam Pro express 32 Channels Surveillance System

#### Viewing Angle

- 33°23' (H)
- 25°21' (V)
- 41°06' (D)

### Ordering Information:

**AirLive POE-200HD-4MM** H.264 1.3 MegaPixel POE Dome