



Device Manager PoE Switch

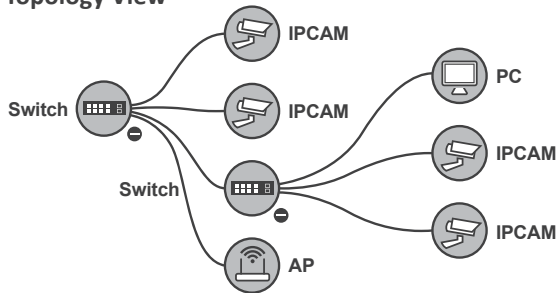
POE-GSH2624-370



Auto Topology Diagram

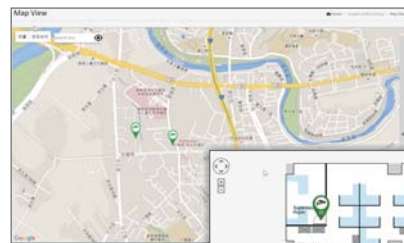
Automatically discover all network devices on your local network and draw out the topology diagram. Let you view and trouble shoot your network instantly.

Topology View



Emap and Google Map

Display the network devices on a floor plan or on the Google Map. You view the status and manage your device by clicking on the device icons.



Google Map View



Floor View



AP and IPCAM Management

Display the status and perform simple configuration on your wireless AP or IP Cameras Show IP camera's live view video on the E-Map or Google Map



Supply Power to your PoE Devices

Supply power to PoE IP cameras or wireless AP through the built-in 24 PoE ports. Up to 370 Watt of total power.



Device Guard

Monitor your PoE network devices such as IP cameras or wireless Access Point. Reboot the device when it is not responding. This provide self healing network that save you cost from sending technician and fix the problems immediately.



Specifications

AirLive POE-GSH2624-370

<p>Standard</p> <ul style="list-style-type: none"> •IEEE802.3 10BASE-T •IEEE802.3u 100BASE-TX/100BASE-FX •IEEE802.3z Gigabit SX/LX •IEEE802.3ab Gigabit 1000T •IEEE802.3x Flow Control and Back pressure •IEEE802.3ad Port trunk with LACP •IEEE802.1d Spanning Tree Protocol •IEEE802.1w Rapid Spanning Tree Protocol •IEEE802.1s Multicast Spanning Tree Protocol •IEEE802.1p Class of service •IEEE802.1Q VLAN Tagging •IEEE802.3at/af PoE 	<p>Security</p> <ul style="list-style-type: none"> •Secure Sockets Layer (SSL) Port Security •IEEE 802.1X Layer 2 isolation Private VLAN Edge (PVE) •IP Source Guard •RADIUS •Storm Control
<p>Interface</p> <ul style="list-style-type: none"> •24 x 10/100/1000Mbps RJ45 ports •2 x mini GBIC/UTP Combo ports 	<p>QoS</p> <ul style="list-style-type: none"> •Hardware Priority Queue <ul style="list-style-type: none"> - Supports 8 hardware queues •Scheduling <ul style="list-style-type: none"> - Strict priority and weighted round-robin(WRR) •Queue assignment based on DSCP and class of service (802.1p/ CoS) •Classification <ul style="list-style-type: none"> - Port based - 802.1p VLAN priority based - IPv4/IPv6 precedence - DSCP based - Differentiated Services (DiffServ) - classification and re-marking ACLs •Rate Limiting <ul style="list-style-type: none"> - Ingress policer - Egress Shaping and Rate Control - per VLAN, per port and flow based
<p>Switch Architecture</p> <ul style="list-style-type: none"> •Store and forward switch architecture •Back-plane up to 48Gbps 	<p>IPv6 Application</p> <ul style="list-style-type: none"> •Web/ SSL •Ping •SNTP (Simple Network Time Protocol) •TFTP (Trivial File Transfer Protocol) •SNMP •RADIUS •Syslog •DNS Client •Protocol-based VLANs
<p>Switch Capacity and Forwarding Rate</p> <ul style="list-style-type: none"> •Capacity in Million of Packets Per Second (mpps) : 38.7 Mpps •Switching Capacity in Gigabits per Second (Gbps) : 52 Gbps 	<p>Management Function</p> <ul style="list-style-type: none"> •Web UI Interface •SNMP v1, v2c, and V3 •Remote Monitoring (RMON) •Port Mirroring •Topolog View, Floor View MAP View •Traffic management •DHCP Server •s-Flow •UPnP •Firmware Upgrade
<p>MAC Address</p> <ul style="list-style-type: none"> •32K 	<p>Discovery</p> <ul style="list-style-type: none"> •LLDP with LLDP-MED extensions
<p>Jumbo Frames</p> <ul style="list-style-type: none"> •Up To 9KB 	<p>Power</p> <ul style="list-style-type: none"> •100-240 VAC 50~60Hz, Internal
<p>Layer 2 Switching Feature</p> <ul style="list-style-type: none"> •Spanning Tree <ul style="list-style-type: none"> - STP 802.1d - RSTP 802.1w - MSTP 802.1s •Trunking : LACP IEEE802.3ad - Up to 4 ports per group <ul style="list-style-type: none"> - Up to 12 groups •VLAN : Support for up to 4K VLANs simultaneously (out of 4096 VLAN ID) <ul style="list-style-type: none"> - Port-based VLAN - 802.1Q tag-based VLAN - Management VLAN - Private VLAN Edge (PVE) - Q-in-Q (double tag) VLAN •Voice VLAN - Generic VLAN Registration (GVRP) •DHCP Relay (Layer 2) •IGMP v1/v2/v3 snooping •IGMP Querier •IGMP Proxy •MLD v1/v2 snooping 	<p>Dimensions</p> <ul style="list-style-type: none"> •442(W)x 44(H)x 211(D) mm
<p>Layer 3 Switching</p> <ul style="list-style-type: none"> •IPv4 Static Routing •IPv6 Static Routing •DHCP Server 	<p>Operating Temperature</p> <ul style="list-style-type: none"> •0°C to 50°C <p>Storage Temperature</p> <ul style="list-style-type: none"> •-20°C to 70°C

Ordering Information:

AirLive POE-GSH2624-370 24 Port PoE Gigabit Switch with 2 Port Combo