



**SNMP-24MGB Plus**

**SNMP Fiber Switch  
Quick Installation Guide**

## Support

You can download the complete guides and supporting programs from <http://www.airlive.com/product/snmp-24mgb-plus/download>, or scan the QR code here.



Please consult with the FAQs <http://www.airlive.com/product/snmp-24mgb-plus/faq> before writing to OvisLink Tech Support Team for further assistance



For any other question, please read the user manual in the CD or mail to [tech@airlive.com](mailto:tech@airlive.com) for technical support.

# SNMP-24MGB Plus Package Contents

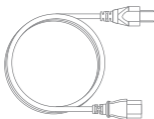
Please check the package contents and contact your distributor if any part is missing.



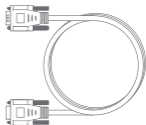
SNMP-24MGB Plus



Rubber Feet



Power Cord



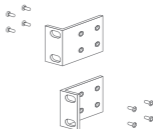
RS-232 cable



User  
Manual  
CD



Quick  
Installation  
Guide



Rack-mounted  
Kit

# I/O Interface



AC Power

DC Power

Reset

Fiber Port

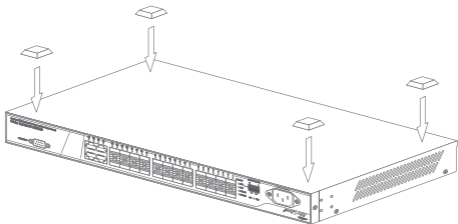
Combo Port

Console Port



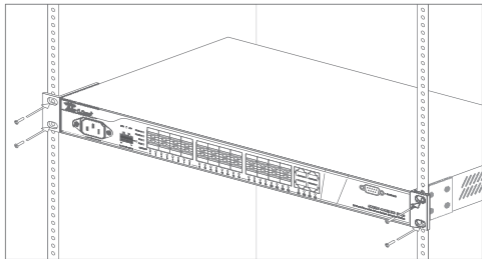
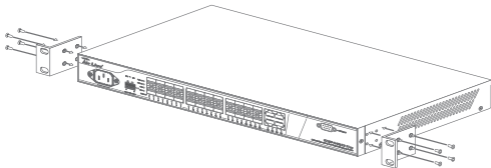
## 01 4 x Rubber Feet Installation

Apply the Rubber Feet to each corner on the bottom of the SNMP-24MGB Plus. These footpads can prevent the Switch from shock/vibration.



## 02 Rack-mounted Installation

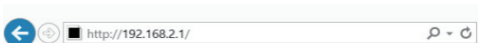
The SNMP-24MGB Plus comes with a rack-mounted kit and can be mounted in an EIA standard size, 19-inch Rack.



## 03 Web Management

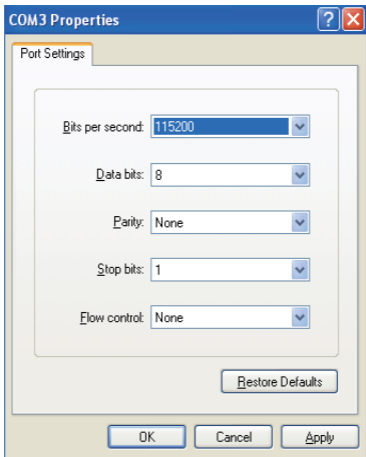
The default IP address of SNMP-24MGB Plus is 192.168.2.1. Please set your PC/NB to the same subnet

1. Launch the Internet Explorer.
2. Type `http://192.168.2.1`. Press “Enter”.
3. Key in the user name and password. The default user name is “**admin**” and password is “**airlive**”.



## 04 Console Management

SNMP-24MGB Plus can be managed through terminal emulation program or Hyper Terminal. Below is the Com port setting parameter.



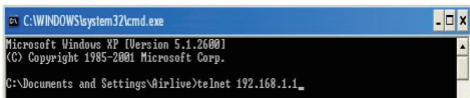
After finish the setting, please enter “**admin**” as username and “**airlive**” as password.



## 05 Telnet Management

SNMP-24MGB Plus can be managed through telnet. To use the telnet, please open the command line windows.

Then type “**telnet 192.168.2.1**” to start.



```
C:\WINDOWS\system32\cmd.exe
Microsoft Windows XP [Version 5.1.2600]
(C) Copyright 1985-2001 Microsoft Corp.

C:\Documents and Settings\Airlive>telnet 192.168.1.1_
```

Please enter “**admin**” as username and “**airlive**” as password.