

Air Live[®]

www.airlive.com

Skypephone-1000

Wireless Skype Phone

User's Manual



Safety Instructions

Always read the safety instructions carefully

- Keep this User's Manual for future reference
- Keep this equipment away from humidity
- If any of the following situation arises, get the equipment checked by a service technician:
 - The equipment has been exposed to moisture.
 - The equipment has been dropped and damaged.
 - The equipment has obvious sign of breakage.
 - The equipment has not been working well or you cannot get it work according to User's Manual.

Copyright Statement

No part of this publication may be reproduced in any form by any means without the prior written permission. Other trademarks or brand names mentioned herein are trademarks or registered trademarks of their respective companies.

Disclaimer

Information in this document is subject to change without notice. The manufacturer does not make any representations or warranties (implied or otherwise) regarding the accuracy and completeness of this document and shall in no event be liable for any loss of profit or any commercial damage, including but not limited to special, incidental, consequential, or other damage.

Skype is a registered trademark of Skype Technologies SA. Windows is a registered trademark of Microsoft Corporation.

About User's Manual

This user's manual and the provided software on the CD are based on Skype 2.0. As Skype upgrades occasionally, for the software compatible with the latest Skype version, please contact your supplier.

April 2006, Rev1.0

Table of Contents

1. Introduction	1
Features	1
Package Contents	2
System Requirements.....	2
Exterior Overview.....	3
Keypads and Controls.....	3
USB Dongle LED Status	4
2. Installation on Host Computer	5
Installing Skype Software	5
Installing the Software AirLive SkyPhone-1000	5
Installing the USB Dongle	8
Accessing AirLive SkyPhone-1000 Functions	9
Managing AirLive SkyPhone-1000 Access to Skype	10
3. Establishing the Connection	12
Step 1. Ensure the link status on the host computer.....	12
Step 2. Power on the Wireless Phone Handset.....	13
Verifying the Link Status via the LCD.....	13
Notes on Establishing Wireless Link	14
4. Getting Started	16
LCD Screen.....	16
LCD Indicators	16
LCD Language.....	17
Charging the Phone	17
Standby Mode	18
Always Link Function.....	19
Resetting the Wireless Phone	20
About the Speaker and Microphone Volume	20
5. Using the Phone with Skype	21
Calling a Skype User.....	21
Initializing a Call from Host Computer	22
Speed Dialing	22
Answering a Call.....	23
Ending / Rejecting a Call	23
Redialing	23
Holding a Call	23
Muting.....	24

Clearing the Entered Numbers	24
Using SkypeOut to Call Regular Phones	24
Making a SkypeOut Call	25
Using the Key Pad to Enter SkypeOut Number.....	25
Adding a SkypeOut Number to Contact List.....	25
Loading Phone Number via Contact Info	26
Missed Calls.....	27
Loading Calls List.....	28
Clearing Calls List	29
Skype Status and Response Mode	29
6. Using the LCD Setting Menu	30
Viewing Information of Your Contact.....	30
Using Options Menu to Adjust Phone Settings.....	31
Menu Navigation.....	33
7. Using with Instant Messenger Software.....	34
8. Troubleshooting	36
9. Specifications	38
10. Regulatory Compliance	40
FCC Conditions	40
CE	40
WEEE Information	40

1. Introduction

Utilizing 2.4 GHz RF technology, this Wireless USB Phone allows you to freely roam around when making Skype™ calls over the Internet; no need to be bound with USB cable anymore! If you have SkypeOut credits, you can even make calls to regular phones, turning this wireless phone into a regular mobile phone.

The wireless phone handset is paired with a receiver dongle. Just plug the dongle to your computer, install the software and it's ready to use. The handset implements a display with an easy-to-use interface and a couple of editable settings, such as ringtones, ringing volume and so on, so that you can personalize the wireless phone to adapt to your needs.

What's more, the wireless phone features Adaptive frequency hopping (AFH) solution to mitigate radio interference in the popular 2.4GHz frequency band. This ensures you a stable wireless communication while experiencing the wireless convenience.

Features

- Extends your Skype by wireless technology, bringing you more convenience
- Utilizing RF 2.4GHz radio frequency
- Using Adaptive frequency hopping (AFH) solution to mitigate radio interference in 2.4GHz frequency band
- Wireless transmission range of up to 30M (outdoor) and 15M (indoor)
- Supports hot-keys to operate Skype as easy as dialing a normal telephone
- Dials to regular phone number using SkypeOut credits
- LCD with multiple languages support
- As compact as a mobile phone, easy to carry
- Echo-cancellation for better sound quality
- Selectable wireless phone settings, e.g. calling/holding ringtone
- Li-Polymer battery rechargeable via USB
- Standby mode to reduce power consumption

Package Contents

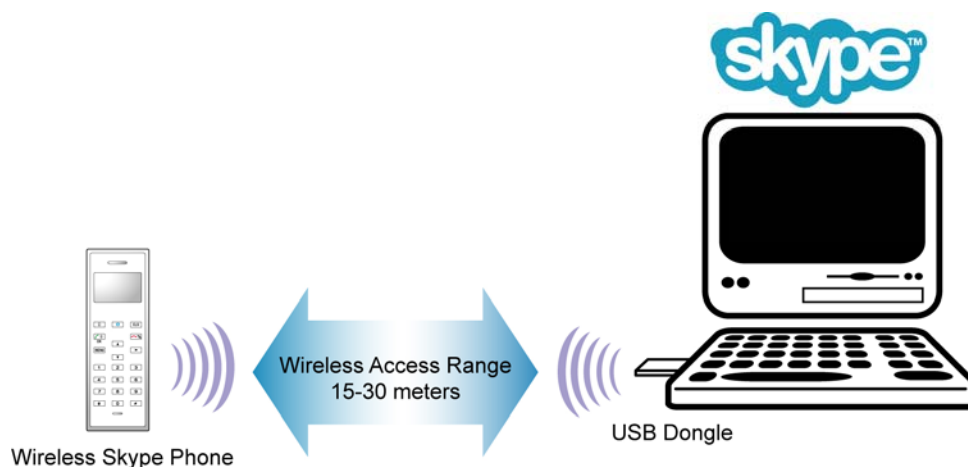
- Wireless USB Phone x1
- USB Receiver Dongle x1
- USB Cable x1
- Software Utility CD* x1
- Quick Installation Guide x1

* The provided software and User's Manual on the CD are based on Skype 2.0. As Skype upgrades occasionally, for the software compatible with the latest Skype version, please contact your supplier.

System Requirements

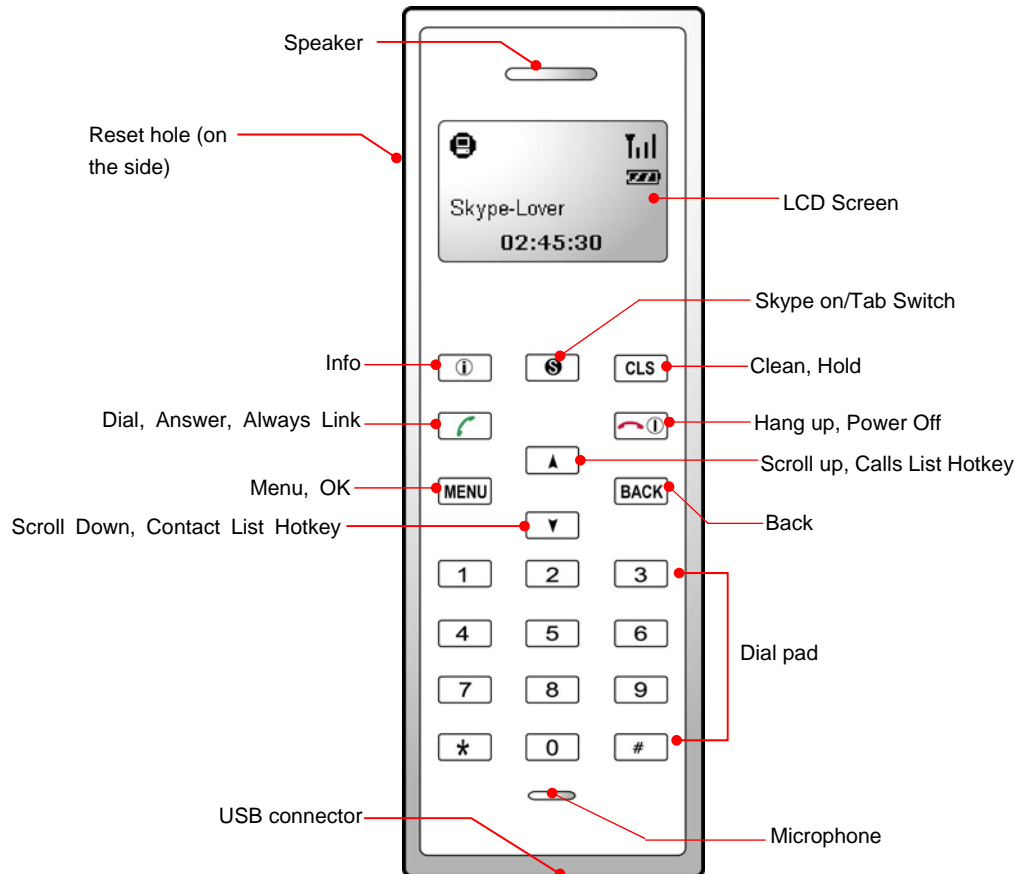
- Computer with an available USB 1.1 port or higher
- To use Skype with the wireless phone, your computer must meet the following minimum system requirements**:
 - PC running Windows® 2000 or XP.
 - 400 MHz processor
 - 128 MB RAM
 - 15 MB free disk space on your hard drive
 - Internet Connection

* The requirements are subject to Skype software. For the latest requirements, please visit the Skype website.






Exterior Overview

The appearance of your handset varies depending on your model. The following illustration is an example providing the keypad functions at a glance:



Keypads and Controls

Icon	Function	Description
	Info	Displays contact information/status menu (when a contact is displayed on the LCD).
	Skype on/ Tab Switch	Opens the Skype window and switches between tabs. Long press to close Skype window.
CLS HOLD	Clear Hold	Press briefly to clear the last one of entered number. Long press to clear all the entered number. Places a call on hold. Pressing it again resumes the call.
	Dial/Answer Always Link	Dials or answers a call. Enables always link function.

Icon	Function	Description
	Power On/Off Hang Up/Reject	Long press the key to power on/off the wireless phone. Ends or rejects a call. Disables always link function.
MENU	Menu, OK	Displays main menu. Enters a menu item or activate a selection.
BACK	Back	Back to previous menu.
▲	Scroll Up	Scroll up. Hotkey to calls list.
▼	Scroll Down	Scroll down. Hotkey to contact list.
0~9, #, *	Dial pad.	Dial pad.
Vol + / -	Volume Up/Down	Increases/decreases the speaker volume during a call.
	Mute	Mutes on/off the microphone during a call.
	USB Connector	USB Mini B type female connector for power charge.

* The key function is activated by pressing the key briefly if not otherwise specified.

** The key icons shown above are for reference only. Actual color and appearance depends on your model.

USB Dongle LED Status

The USB dongle's LED should be lit when plugged to a power-on computer. It shows the RF link status between the wireless phone and the dongle as follows:

Status	Description
Blink once every three seconds	RF link disconnected, standby mode
Solid	Receiving/sending data over the RF link Always link enabled

2. Installation on Host Computer

To use Skype with the wireless phone in Windows 2000/XP, you should install Skype and the provided utility, AirLive SkyPhone-1000. AirLive SkyPhone-1000 is a tool that enables your wireless phone to communicate with Skype so as to access Skype functionality.

Please follow the instructions in this chapter to complete the installation.

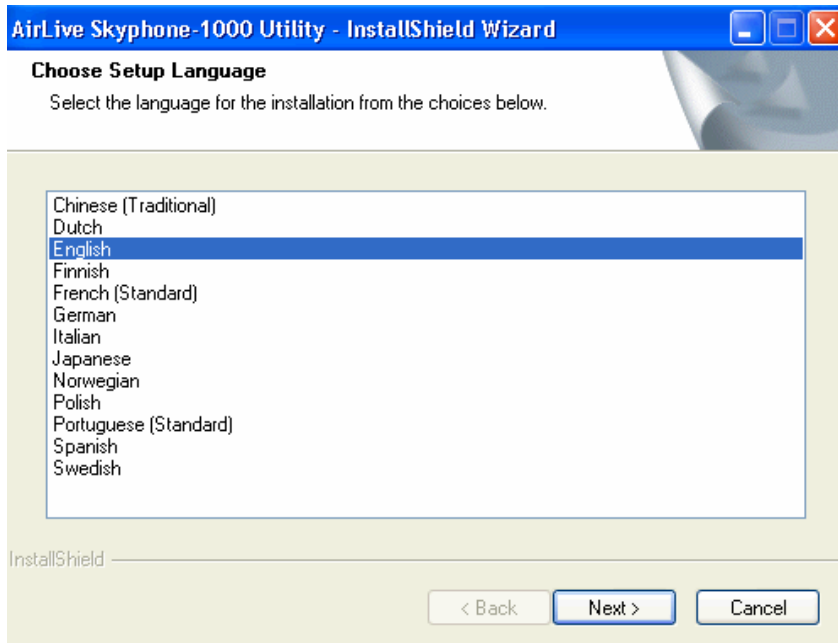
Installing Skype Software

1. If Skype is not yet installed on your computer, please download Skype installation file from **www.skype.com**.
2. Double-click the installation file you've downloaded and then follow the on-screen prompts to complete the installation.

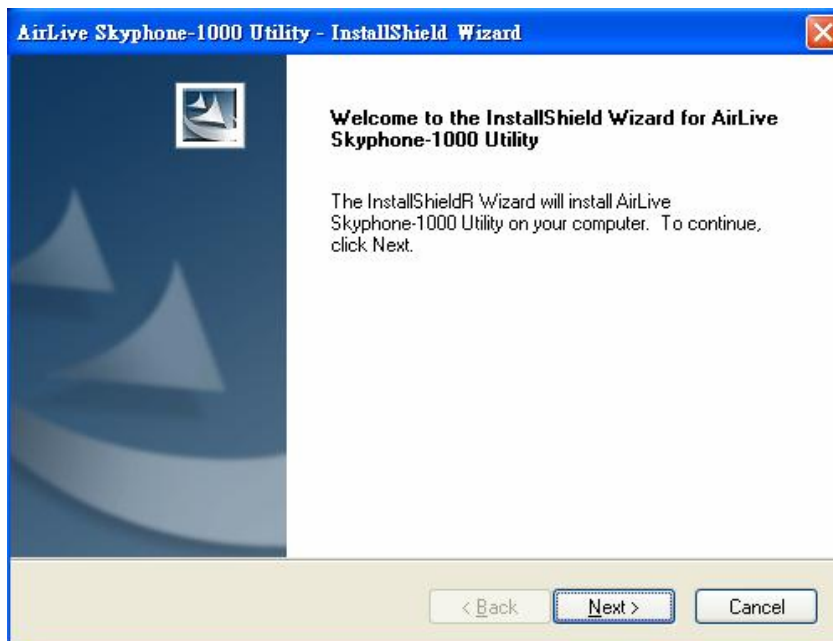
Installing the Software AirLive SkyPhone-1000

Important: You must install the software before you plugging the USB dongle.

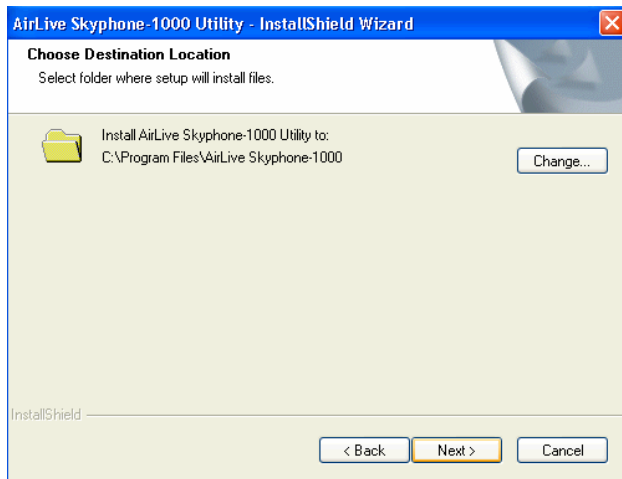
1. Insert the provided Software Utility CD into your CD-ROM drive. The setup program will start automatically. If not, locate and double-click the **Setup.exe** file in **Software** folder to launch the setup program.
2. When the welcome screen appears, select a language for the installation and then click **Next**.



3. Click **Next** to continue



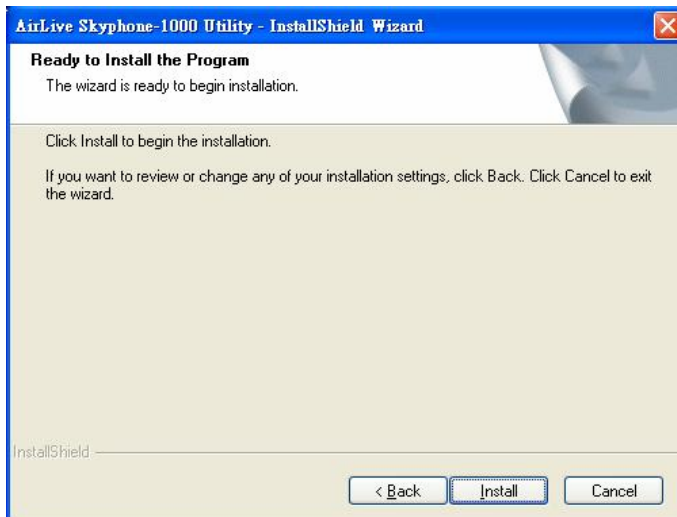
4. Select to install the program in default directory or click **Change** to specify another directory. Then click **Next**.



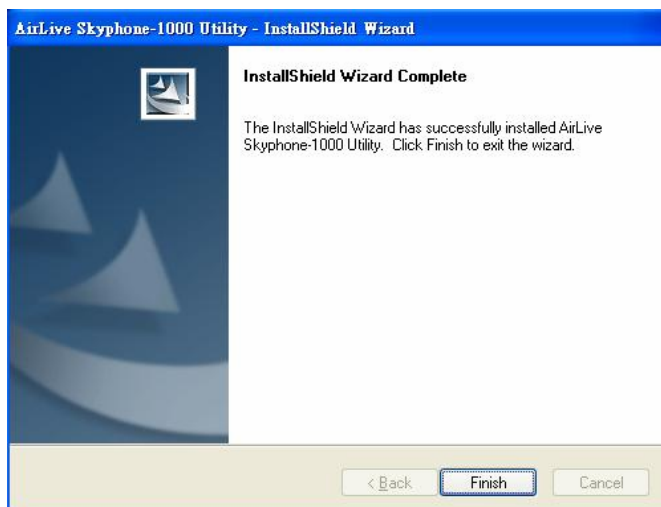
5. When everything is ready, you can click install button

For automatic installation procedure, or you can click Back button

To change your configuration.

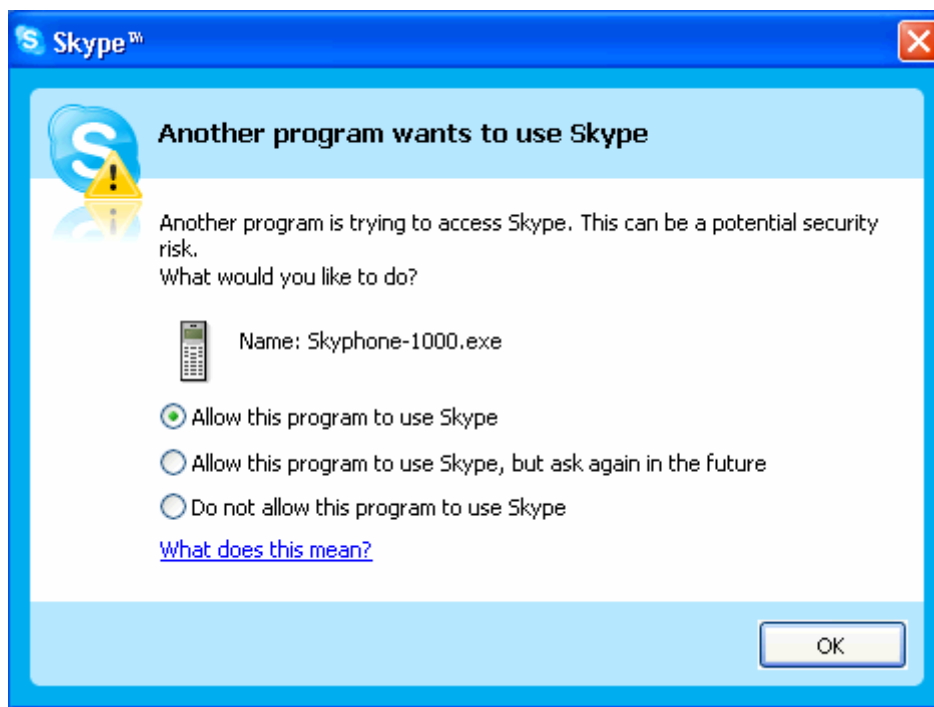


6. Click **Finish** to complete the installation.



Installing the USB Dongle

Plug the USB dongle to your computer's USB port. The system will automatically install Windows built-in driver. Whenever the following screen appears, always select **Allow this program to use Skype** and click **OK**. If prompted for system restart, click **Yes**.



Throughout this manual, the computer that is plugged with the USB dongle is referred to as a "host computer".

Note: You will not see this screen if Skype is not active. You can configure it later in Skype window. Refer to "Managing AirLive SkyPhone-1000 Access to Skype" on page 10 for details.

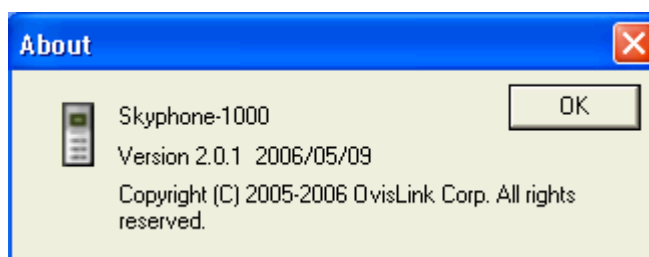
When the dongle is plugged to a USB hub...

If the dongle is plugged to your computer via USB hub, make sure the hub is connected to its power adapter, otherwise insufficient power supply will cause the phone to generate noise during a conversation.

Accessing AirLive SkyPhone-1000 Functions

When you are done with the AirLive SkyPhone-1000 installation, AirLive SkyPhone-1000 starts automatically with its icon located in the system tray. It also starts automatically at system startup. You can right-click the icon and perform the following task:

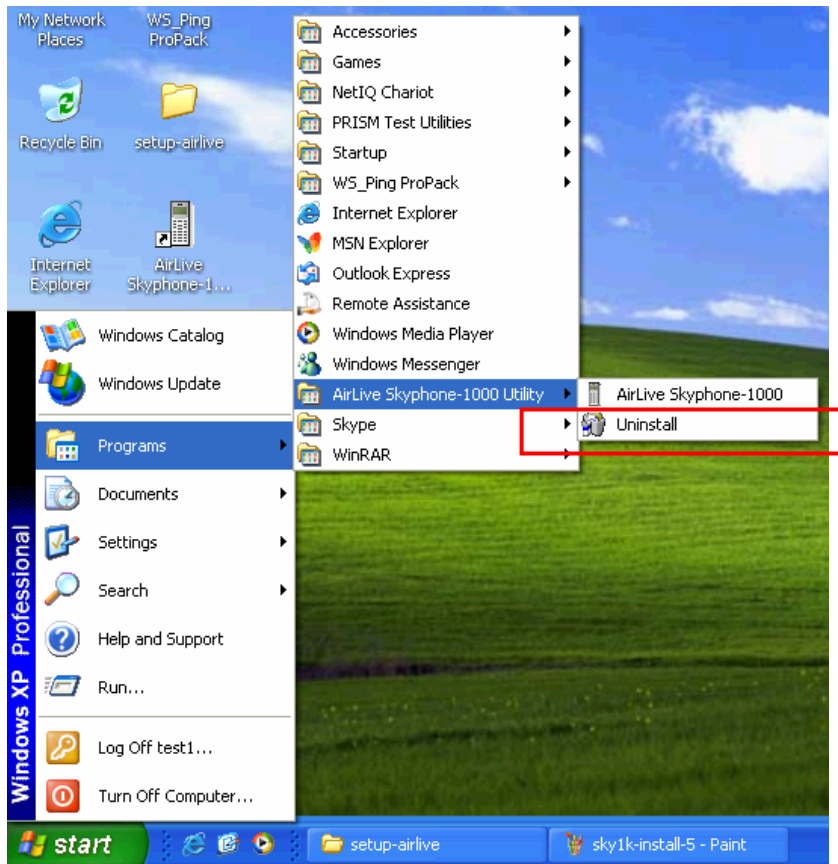
- Click **Select Language** to change the user interface language in AirLive SkyPhone-1000 as well as in the LCD.
- Click **Exit** to quit AirLive SkyPhone-1000.
- Click **About** to view the version information.



* Actual version number depends on the AirLive SkyPhone-1000 version.

In addition, a AirLive SkyPhone-1000 program group is added to Windows programs menu. Using the programs menu, you can perform these tasks:

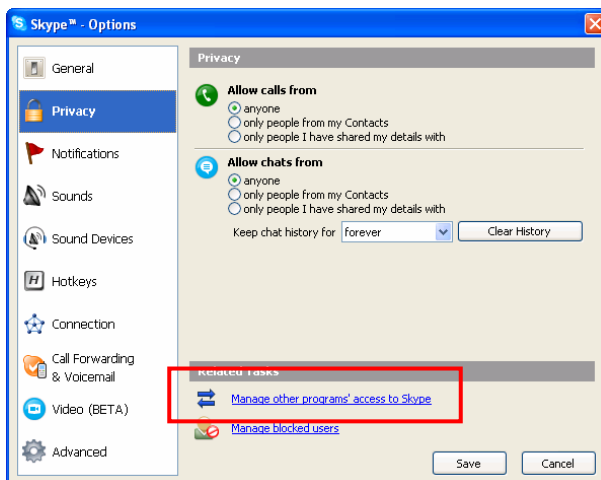
- If AirLive SkyPhone-1000 is closed, you can restart it by selecting **Start > Programs > AirLive SkyPhone-1000**.
- Uninstall AirLive SkyPhone-1000 by selecting **Start > Programs > AirLive SkyPhone-1000 > Uninstall**.



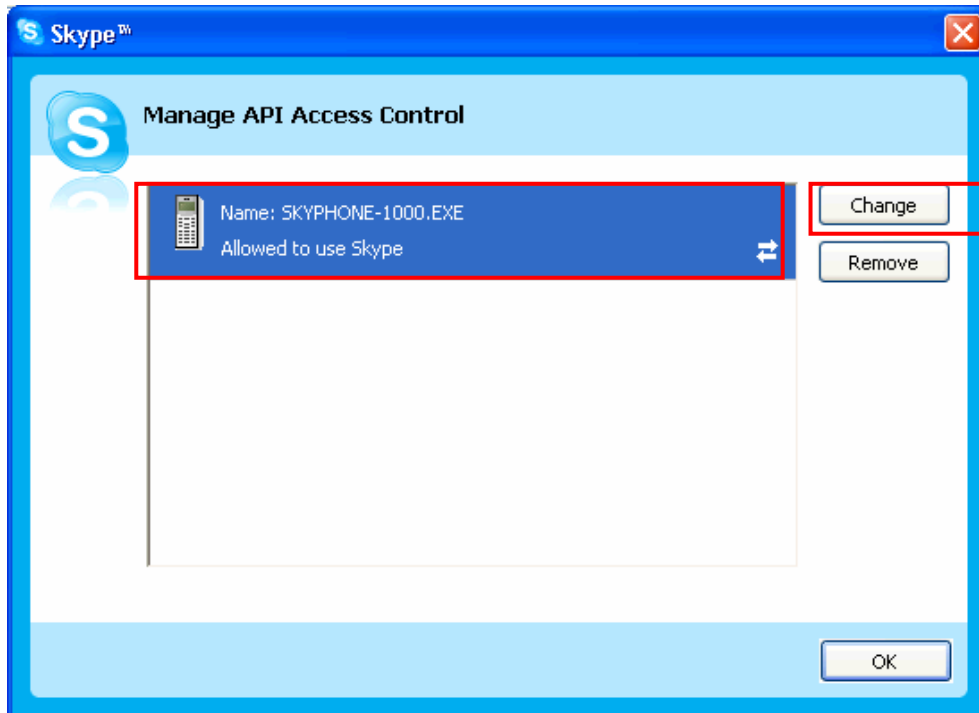
Managing AirLive SkyPhone-1000 Access to Skype

You should always let your AirLive SkyPhone-1000 use Skype so that you can use the wireless phone. If you accidentally select the **Do not allow this program to use Skype** option, open Skype window and take these steps:

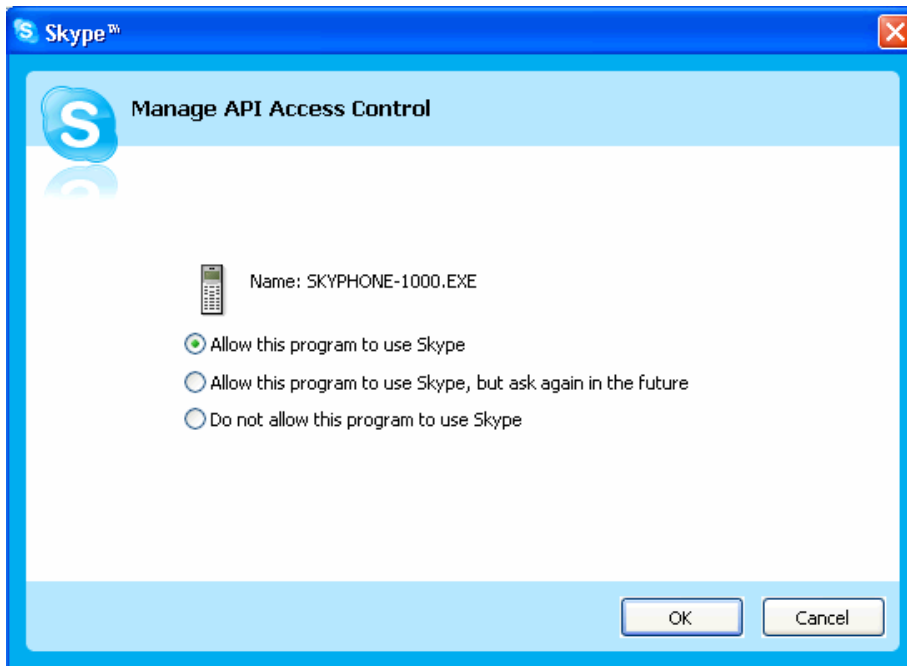
1. Click **Tools > Options > Privacy > Manage other program's access to Skype**.



2. Select **SKYPHONE-1000.EXE** and click **Change**.



3. Re-select a proper option to let the provided program access Skype.



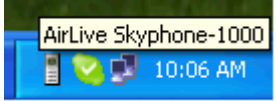
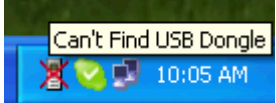
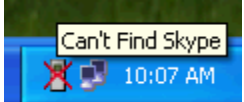
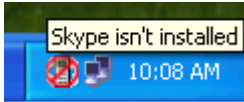
3. Establishing the Connection

Before you start to use the phone, you should first establish the link between the wireless phone and the dongle. The procedures are as follows:

Step 1. Ensure the link status on the host computer.



Make sure that both AirLive SkyPhone-1000 and Skype are active on your host computer and the USB dongle is properly plugged.

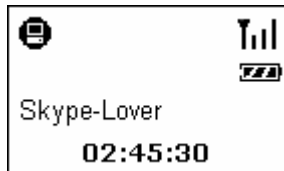
Before using the wireless phone, always make sure the link between the USB dongle, AirLive SkyPhone-1000 and Skype is properly established on your host computer. Placing the cursor over AirLive SkyPhone-1000 systray icon provides you with the communication status as described in the table below.

AirLive SkyPhone-1000 Icon	Link Status
	<p>The USB dongle is plugged. AirLive SkyPhone-1000 and Skype are active. The link is ready now.</p>
	<p>The USB dongle is un-plugged or not properly plugged. Action: Make sure the USB dongle is properly plugged.</p>
	<p>Skype is not active or accidentally terminated or AirLive SkyPhone-1000 is not allowed to access Skype. Action: Launch and log in to Skype and allow AirLive SkyPhone-1000 to access Skype.</p>
	<p>Skype is not installed on your computer. Action: Install Skype on your computer.</p>



Step 2. Power on the Wireless Phone Handset.

To power on the wireless phone, long press the **Power** key until the main screen appears on the display.

When starting up your wireless phone, the signal indicator  and PC indicator  should be displayed on the wireless phone's LCD. Your Skype name and the time of the computer plugged with the dongle should also be displayed.



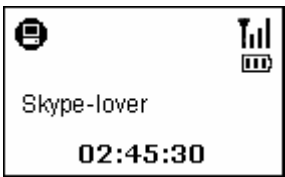
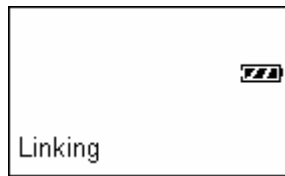
The and indicators disappeared ?


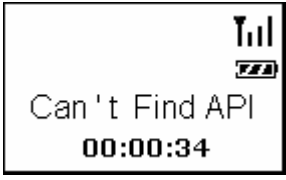


The  and  indicators will disappear in standby mode. If not operated for 20 seconds, the wireless phone automatically enters standby mode and the RF link is temporarily disconnected.

To resume from standby mode, just press the **OK** key on the wireless phone. The RF link will be re-established and the indicators should appear again.

Verifying the Link Status via the LCD

The wireless phone LCD will also display related messages if the communication cannot be established. The following table lists possible screens you will see. Refer to the table to verify the link status and take required action.

Wireless Phone Display	Link Status
	<p>The RF link is established and everything is OK. The wireless phone successfully loads Skype data via the activated AirLive SkyPhone-1000.</p> <p>You are ready to use the wireless phone.</p>
	<p>No RF link. The wireless phone cannot find the dongle at startup.</p> <p>Action:</p> <ul style="list-style-type: none"> • It could be the signal is too weak. Move closer to the dongle until the signal indicator appears. • Ensure USB dongle is plugged. • Make sure the host computer is not in standby or hibernation

Wireless Phone Display	Link Status
	mode.
	<p>The RF link is established but AirLive SkyPhone-1000 is not active.</p> <p>Action: Launch AirLive SkyPhone-1000.</p>
	<p>The RF link is established but Skype is not active or AirLive SkyPhone-1000 is not allowed to access Skype.</p> <p>Action: Launch Skype. Also, allow AirLive SkyPhone-1000 to access Skype (refer to "Managing AirLive SkyPhone-1000 Access to Skype" on page 10).</p>
	<p>Standby mode.</p> <p>To resume for standby mode, just press the OK key on the phone.</p>
N/A	<p>The wireless phone is switched off or running off the power.</p> <p>Action: Power on your wireless phone or charge the wireless phone.</p>

Notes on Establishing Wireless Link

- Your wireless phone and dongle are packaged as an exclusive pair. They share a unique ID to communicate only to each other. This means your wireless phone cannot link to a dongle other than the one delivered with the wireless phone and vice versa. Likewise, you cannot expect the wireless phone to work with multiple dongles and vice versa.
- Currently up to 7 pairs of wireless phone and dongle can co-exist within one radio range. The more pairs are present, the more likely interference will occur and thereby reduce the transmission range.
- The maximum outdoor wireless range is about 30 meters while indoor range is about 15 meters in an open-air environment. If you cannot make the link, move the wireless phone closer to the dongle.

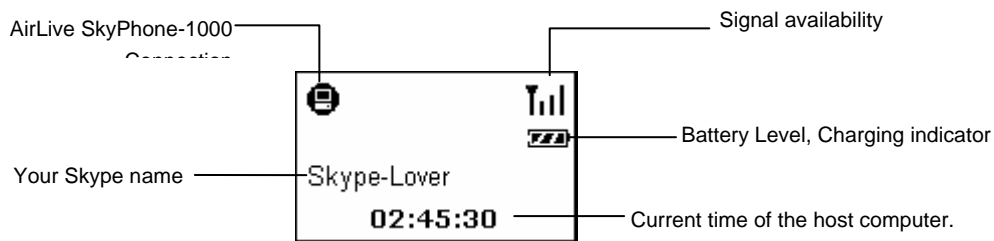
- Other Bluetooth adapters may detect the presence of your wireless phone and USB dongle (which are identified as CONWISE-Remote and CONWISE-Dongle). But they cannot build a connection with either of them.

4. Getting Started

Before you start to use the wireless phone, get acquaintance with the phone features and the LCD user interface so that you can get the most of the wireless phone.













LCD Screen

A typical main screen is as below:



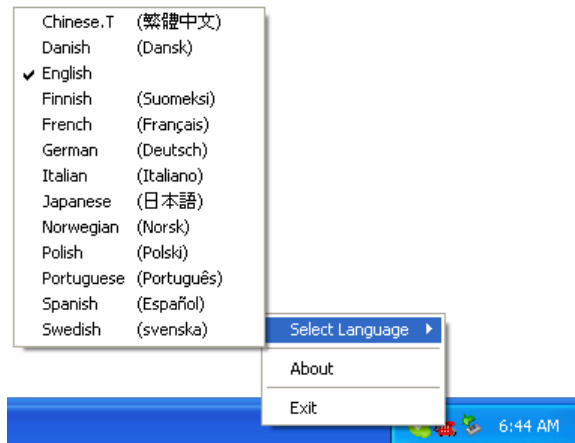
Note: The Skype name here refers to the Skype name that Skype users will see, which is configured via **File > My Profile > Full Name** in Skype. If the field is blank, your account name is displayed.

LCD Indicators

	AirLive SkyPhone-1000 availability		Options menu
	Always link		Missed call
	RF signal availability		Calls list
	Battery level		Missed call
	Contact		Incoming call
	Holding a call		Outgoing call

LCD Language

If you want to change the LCD user interface language, right-click on the AirLive SkyPhone-1000 systray icon and click **Select Language**. Then select a language as required. Your selection takes effect immediately and will reflect on the systray menu as well as the LCD user interface.



About the Contact Name Language

As for the contact names, as long as they are correctly displayed in Skype on the host computer, they should also be correctly displayed in the LCD, regardless of your user interface language.

The character of your contact name is not properly displayed?


If a language is not correctly displayed in Skype, you need to install additional language on your system. Refer to Windows online help for more information.



Charging the Phone

The wireless phone is powered by an internal rechargeable battery. You need to charge the wireless phone battery when:

- Using the wireless phone for the first time (the battery may be not fully charged when shipped).

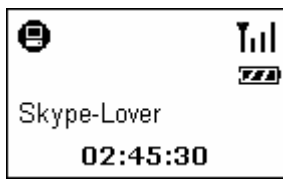
- The battery is totally flat.
- The battery icon indicates low-battery condition ()

To charge the phone, use a USB cable to connect the phone to a USB port on a power-on computer. During the charge the charging indicator keeps flashing and you can still power on the wireless phone and use it. Once the charge is complete, the charging indicator stops flashing.



When charging a power-off phone





The charging indicator keeps flashing. Once the charge is complete, the LCD turns off automatically.



When charging a power-on phone

The charging indicator keeps flashing. Once the charge is complete, the indicator stops flashing.

The charging time depends on the power remaining. A totally flat battery takes approximately 3 hours to be fully charged.

Battery Indicator	Battery Level
	10% ~ 40%
	40% ~ 80%
	80% ~ Full
	Full

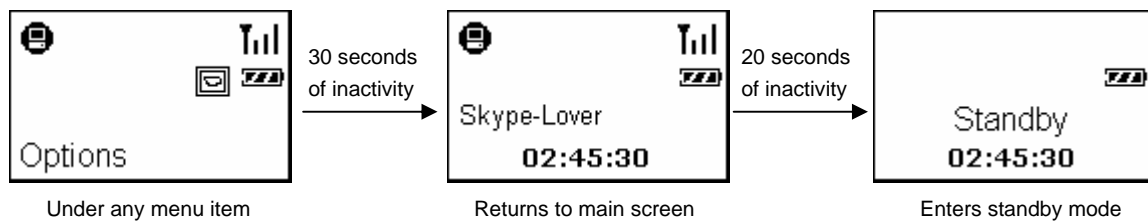
Note: The phone's USB port is only for power charging but not for data transfer. Therefore if you want to use the phone during the charge, you should still have the USB dongle plugged as a medium for communication.

Standby Mode

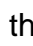

At the main screen, if not used for 20 seconds the wireless phone LCD backlight automatically turns off and enters standby mode to reduce the power consumption.

If you have entered a menu, if not used for 30 seconds, the screen returns to the main screen and after a sequential 20 seconds of inactivity, the phone enters standby mode.


To resume from standby mode, just press the **OK** key on the wireless phone. The message “Linking” will be briefly displayed and the phone will re-establish the RF link with the USB dongle.



Cannot see the and indicators on the display?

In standby mode the RF link is temporarily disconnected, causing the  and  indicators to disappear from the display. Once you resume from standby mode and the RF link is re-established, the indicators appear again.

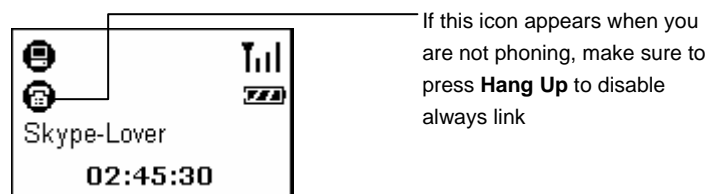
Always Link Function

When you press the **Dial / Answer** key, the always link function will be enabled and the indicator  will appear. This function is automatically disabled when you press the **Hang Up** key to end a conversation. However, if a call is hanged up by the other party and you did not press the **Hang Up** key, the always link will not be disabled unless you press the **Hang Up** key.

When always link is active, the wireless phone will not enter standby mode and thus cause the phone to keep consuming the battery power. **Therefore, when you are not phoning, it is important that you disable the always link function.**

The always link indicator appears when you are not phoning...

Make sure to press the **Hang Up** key to disable the always link function to save your battery power.



Resetting the Wireless Phone

You will need to reset your wireless phone in case any of the following situations occur:

- The wireless phone hands up.
- The LCD display responds slowly.

To reset your phone, insert a pin or paperclip into the **Reset** hole on the side. Press lightly and then release to power off the phone. Then power on the phone again by long-pressing the **Power** key.

About the Speaker and Microphone Volume




The wireless phone's speaker and microphone volume is not adjustable on Windows via **Control Panel > Sounds and Audio Devices**. The microphone volume is fixed and not adjustable. As for the speaker volume, it is only adjustable on the phone device:

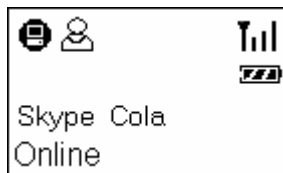
- During the conversation, press the **Vol Up** or **Vol Down** key on the side of the device to adjust the volume.
- Or, you can predefine the setting via **Menu > Options > Speaker Vol**.

5. Using the Phone with Skype

Calling a Skype User

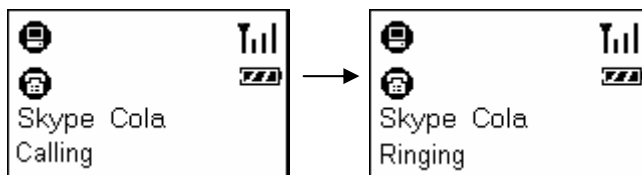
To call a Skype user, you have to launch Skype and log in to Skype. And you should have added desired Skype user(s) to your contact list. Then take the steps below to call a Skype user:

1. Press the **Contacts** hotkey  to display the Skype contact list.
2. Scroll with   to reach the desired contact.

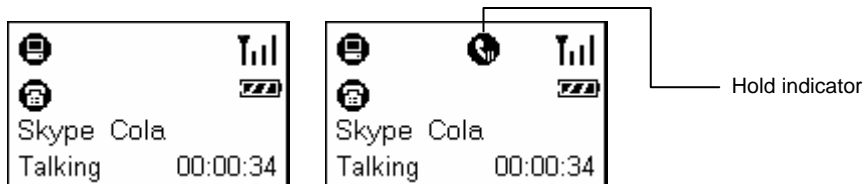


3. Once your target contact is displayed, press **Dial** to make the call.

The communication process is as follows. The connecting time depends on the network traffic. You will not hear the ringing tone until the connection is established.



4. Once the call is answered, the duration timer will display the time elapsed of the call in process. You can press **Hold** to hold the call if required.



5. To end the call, press the **Hang Up** key. The call duration timer will be shown briefly.

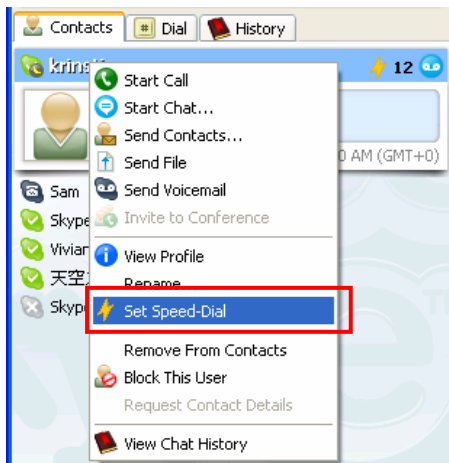
Initializing a Call from Host Computer

If your Skype contact list is long, you may want to spare the hassle of scrolling through the contact list. In such a case, you may initialize a call from Skype window on the host computer first and then communicate via the phone.

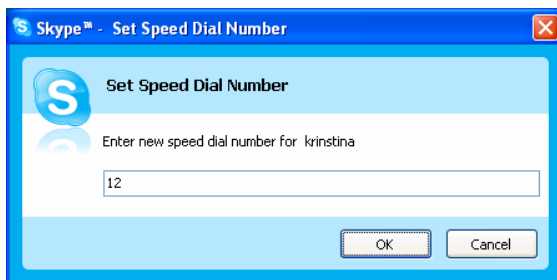
Speed Dialing

To use the speed dialing function, you should assign the speed dial number to your target contact via Skype window first.

1. In Skype window, go to the **Contacts** tab and select your desired contact. Right-click the contact and select **Set Speed-Dial**.

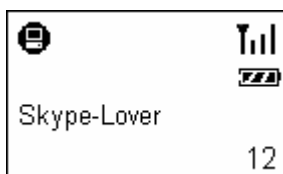


2. Assign a number as a speed dial number using your keyboard.



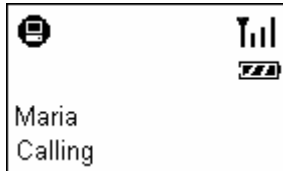
Once the speed dial number is assigned, just use the wireless phone's keypad to dial the number and then press **Dial** to make the call.

In case you want to clear the number you entered, press **CLS**. Each press will erase the last number. Or you can long press **CLS** to clear all the entered numbers at a time.

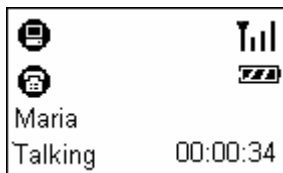


Answering a Call

On an incoming call, the wireless phone will be ringing and the LCD backlight will light on with the caller ID displayed (if available). Press the **Dial** key to answer the call.



Once you answer the call, the duration timer will display the time elapsed of the call in process. You can press **Hold** to hold the call if required. To end a call, press the **Hang Up** key.



Ending / Rejecting a Call

To end or reject a call, press the **Hang Up** key.

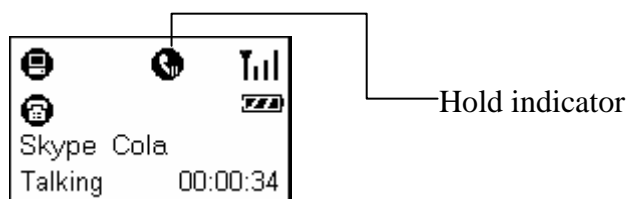
Redialing

Press the **Calls List** hotkey to load the last outgoing call and then press the **Dial** key to make the call.

Holding a Call

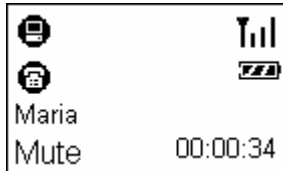
To place a call on hold, just press the **HOLD** key. Pressing the **HOLD** key again can resume the call.

When holding a call, if a second call is coming you will hear a knocking sound (which is configured via **Skype > Sound > Knocking**.) You can press **Answer** key to answer the call; but this will also terminate the first call.



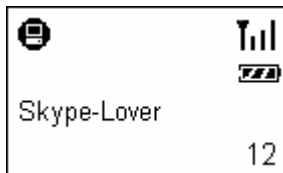
Muting

To mute the microphone during a call, press the **Mute** key on the side of the device. When mute is on, the message **Mute** is displayed on the screen. To turn mute off, just press the **Mute** key again.



Clearing the Entered Numbers

To erase the numbers you've just entered, press **CLS**. Each press will clear the last character. Or you can long press **CLS** to clear all the entered numbers at a time.

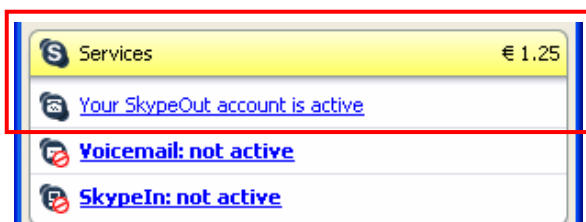


Using SkypeOut to Call Regular Phones

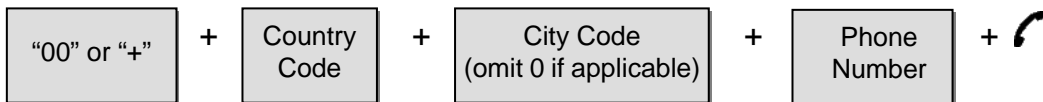
SkypeOut allows you to place calls to regular telephones or mobile phones. This feature allows you to call from Skype to friends who are not using computers but still use regular phones.

To use SkypeOut, you should buy SkypeOut credits first. To do this, click **Tools > Go to My Account Page**. Sign in and find the link to SkypeOut credits page. Then follow the instructions to purchase the credits.

After you have purchased SkypeOut credits, log out from the Skype web page. Open your Skype and check the **Services** section for verification that your SkypeOut account has been activated.



To make a SkypeOut call, you must enter the number in the following way (whether for domestic or international calls):



Example 1: Placing a USA domestic call 222-5551234.

00-1-222-5551234 or +1-222-5551234

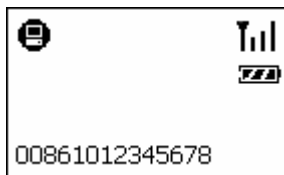
Example 2: Calling China (010-12345678) from USA.

00-86-10-12345678 or +86-10-12345678 (*Omit the preceding 0 from the local code)

Making a SkypeOut Call

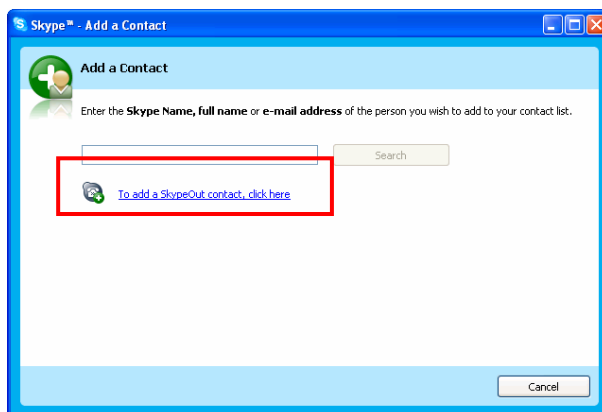
Using the Key Pad to Enter SkypeOut Number

Enter the SkypeOut number using the keypad and then press .

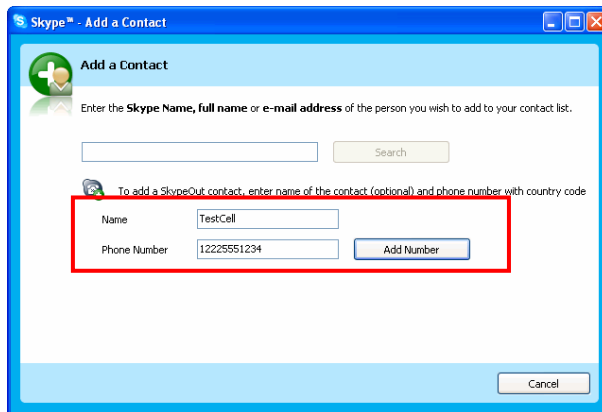


Adding a SkypeOut Number to Contact List

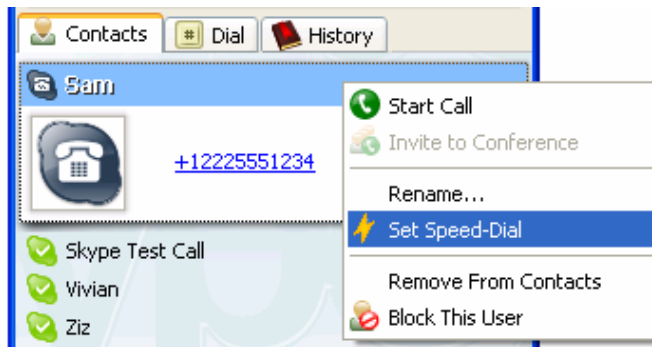
1. To add a SkypeOut number, click **Tools > Add a Contact**.
2. Click the item for adding a SkypeOut contact.




3. Type in a name or description for this phone number and enter the phone number. Then click **Add Number**. (No need to enter "+" or "00" before the actual number; Skype will automatically add it to make it SkypeOut compatible.)




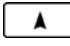



After adding the SkypeOut number to your contacts list, you can also assign a speed-dial number to the contact.



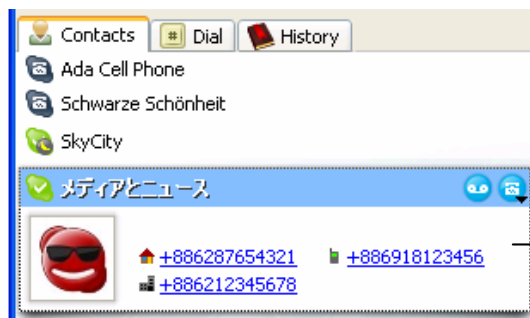
Once the SkypeOut number is saved as a contact, you can press the **Contacts** hotkey  to display the Skype contact list. Then press **Dial** key to make the call.

Loading Phone Number via Contact Info

1. Press the **Contacts** hotkey  to display the Skype contact list.
2. Scroll with   to reach the desired contact.
3. Press the **Info** key to enter the information menu.
4. Scroll with   to reach the required item, e.g. **Mobile Phone**, **Office Phone** or **Home Phone**.
5. Press **Dial** key to display the number.
6. Press **Dial** to make the call.

“No Number” is displayed for Mobile Phone, Office Phone or Home Phone ?

The availability of **Mobile Phone**, **Office Phone** and **Home Phone** depends on whether your target contact provides these information in his/her profile settings, which is accessed via **File > Edit My Profile** in Skype. Your contact must provide these information in SkypeOut compatible format so that you can dial these numbers.



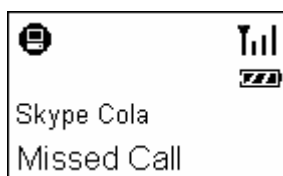
Highlight a Skype contact and you can see the personal info, if any, provided by the contact.

Fail to make a SkypeOut call?

The telephone number must be in SkypeOut compatible format otherwise you cannot successfully make the call.

Missed Calls

In case you have a missed call, the LCD will display a notification of the latest missed call.





There may be more than one missed call on the phone. To view missed calls list:

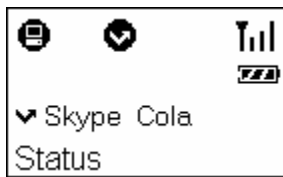
1. Press the **MENU** key and the use to reach the **Missed Calls** menu. Press **OK** to access the list content.





2. The caller and time of each missed call will be displayed. At the missed calls screen, you can:




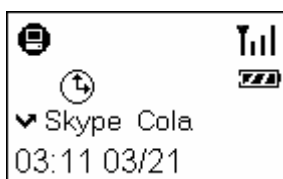
- Use   to scroll through the missed calls list.
- Press **Dial** to call the contact being displayed.
- Press **Info** to access the information menu for the contact being displayed.



Then you can use   to switch between **Status**, **Office Phone**, **Home Phone**, **Mobile Phone** and **Skype Account** and then press **OK** to enter a desired item. If a SkypeOut compatible telephone number is provided, you can press **Dial** to make a SkypeOut call.

Loading Calls List

Pressing the **Calls List** hotkey  allows you to load the calls list, which includes incoming, outgoing and missed calls. The calls are sorted in time order with the most recent at the start.



Missed Call





Outgoing Call





Incoming Call

At the calls list screen, you can:

- Use   to scroll through the calls list.
- Press **Dial** to call the contact being displayed.
- Press **Info** to access the information menu for the contact being displayed.



Then you can use   to switch between **Status**, **Office Phone**, **Home Phone**, **Mobile Phone** and **Skype Account** and then press **OK** to enter a desired item. If a SkypeOut compatible telephone number is provided, you can press **Dial** to make a SkypeOut call.

Clearing Calls List

To clear the calls records, open the Skype window and click the **History** tab. Select the calls record you want to delete and press delete key to delete it.

Note: The wireless phone's calls list corresponds to that on the Skype window. If you clear the list entries on the Skype window, it will be also cleared from the wireless phone.

Skype Status and Response Mode

The wireless phone's respond mode varies according to your Skype status as described in the table below:

Skype Status	Phone Ringer	Phone LCD Backlight
Offline	No Ring	No
Online	Ring	Flash
Skype Me	Ring	Flash
Away	Ring	Flash
Not Available	Ring	Flash
Do Not Disturb	No Ring	Flash
Invisible	Ring	Flash

6. Using the LCD Setting Menu






The wireless phone comes with a setting menu allowing you to verify or modify the settings to adapt the phone to your requirements. Refer to the relevant sections for the descriptions.

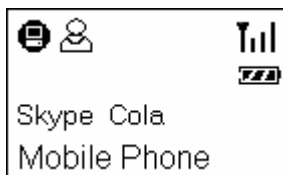
Viewing Information of Your Contact

This feature allows you to view the personal information of your contact, including mobile phone, Skype account, office phone and home phone. These information are only available if your contact enter them via **File > Edit My Profile** in Skype.

If a telephone number is provided, you can even make a SkypeOut call providing you have SkypeOut credits.

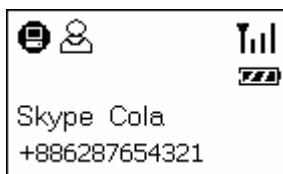
To view the information of a contact:

1. Press the **Contacts** hotkey  display the Skype contact list.
2. Scroll with   to reach the desired contact.
3. Press the **Info** key to enter the information menu.
4. Use   to scroll through the options: **Mobile Phone**, **Skype Account**, **Office Phone** and **Home Phone**.



5. To view the setting, press **OK**.

If a telephone number is provided, you can also place a SkypeOut call by just pressing the **Dial** key providing you have valid SkypeOut credits.





6. To return to your main screen, just keep pressing **Back**

Using Options Menu to Adjust Phone Settings



The **Options** menu comes with a couple of wireless phone settings. You can modify these settings as required to adapt the phone to your personal requirements.

To use the **Options** menu:



1. Press the **MENU** key and then use   to reach the **Options** menu.

2. Press **OK** to enter the **Options** menu.



3. Use   to scroll through the menu. Once the desired menu is reached, press **OK**.



4. Press   to change the setting.



5. Press **OK** to activate the setting. The screen will return to previous menu.

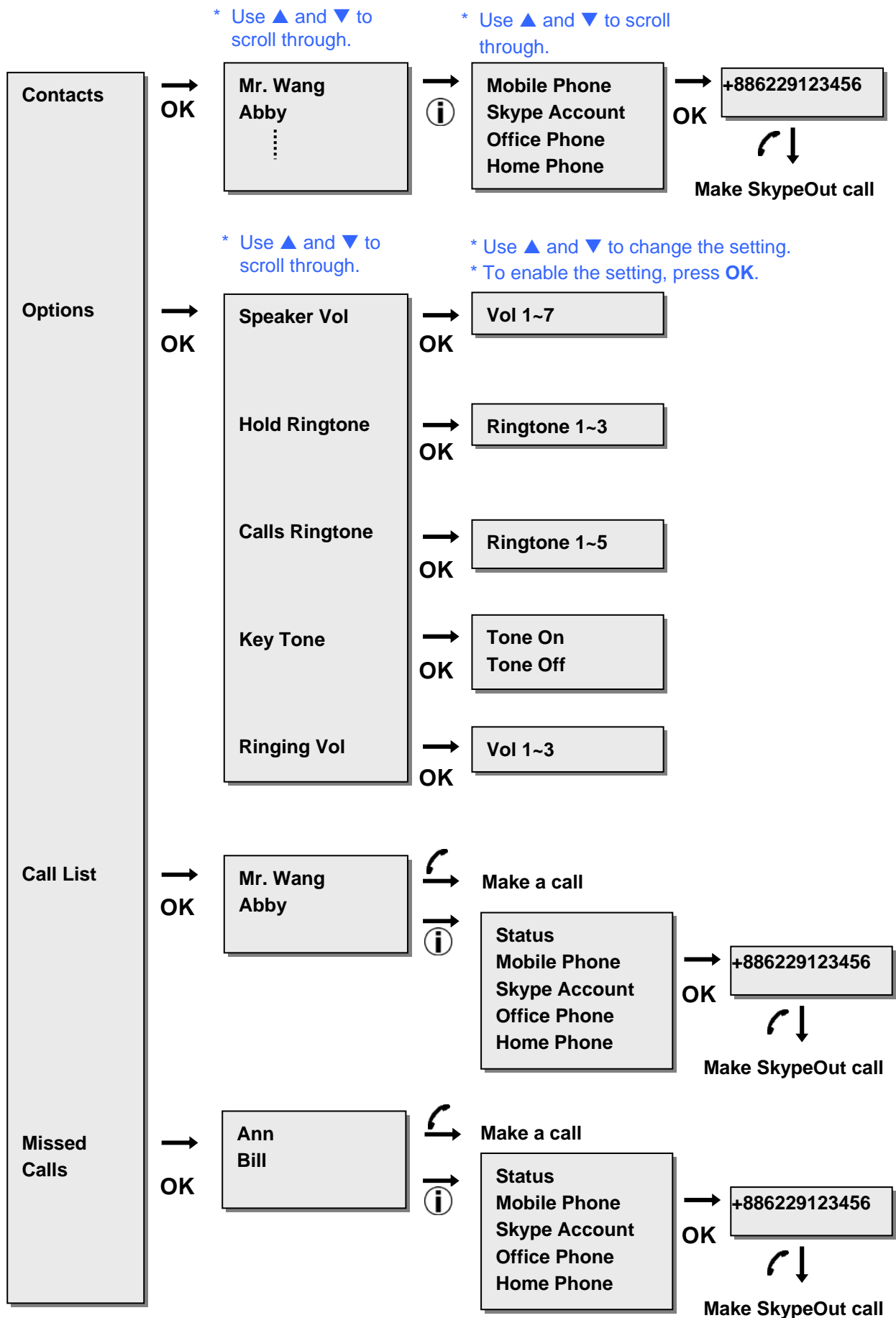


Note: You must press **OK** to activate the settings otherwise the settings will not be changed.

Available items under **Options** menu and the selectable choices for each item are given in the table below:

Option	Function	Available Settings
Speaker Vol	Adjusts speaker and keypad tone volume. Note: Pressing the Vol Up / Vol Down key on the side of the phone will override this setting.	Vol 1 ~ 7
Hold Ringtone	Selects holding ringtone. When you placing a call on hold, the phone will play the holding ringtone you specify here.	Ringtone 1-3
Calls Ringtone	Selects the ringtone to be played when you get a call.	Ringtone 1-5
Key Tone	Turns on/off the keypad tone.	Tone On Tone Off
Ringling Vol	Adjusts the volume of the ringtone.	Vol 1 ~ 3
Reset	Reset all the options settings to the defaults.	

Menu Navigation



7. Using with Instant Messenger Software

The wireless phone can be used as an audio device with instant message (IM) software, such as MSN Messenger and Yahoo Messenger. To do this, you should first configure the software to use the wireless phone as the audio device.

MSN Messenger

Select **Tools > Audio and Video setup** to open the **Audio and Video Setup** dialog box and then proceed as prompted. Make sure the audio and video devices are correctly configured as shown by the figure below.



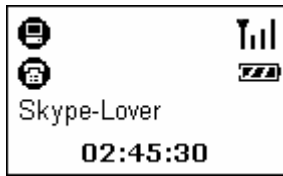
Yahoo Messenger

Select **Messenger > Preferences > Calling & Audio** and select **USB Audio Device** as the microphone and the speaker.

After the configuration:

1. Use the instant messenger to initiate the audio conversion on your computer side.
2. Press the **Dial (Always Link)** key and start your conversation via the wireless phone. When the conversation ends up, press the **Hang Up** key.

Important: After the conversation, make sure the press the **Hang Up** key to disable the always link function; otherwise the phone will keep consuming the battery power due to power-saving function is disabled.



8. Troubleshooting

Q1. When I try to operate the wireless phone, the LCD keeps showing "Linking".

A1. If the RF indicator disappears from the screen in working mode, it means the wireless connection cannot be made. Move your wireless phone closer to the dongle to see if the problem is solved.

If the RF indicator remains absent, verify if any of the following situations occurs:

- The dongle has been un-plugged or not properly plugged.
- Your computer enters standby or hibernation mode.

Q2. I've got noise and hiss on my phone conversation.

A2. There are a couple of reasons that might degrade the sound quality, such as distance, obstacle and network traffic. You may try to improve the sound quality by first moving closer to your host computer.

Also, a partition wall or window in your home or office may be obstacle to the RF signal. Keep away from the obstacle and try move closer to the dongle.

Another reason

If you intend to use more than one pair of wireless phone and receiver dongle within a wireless radio range, try to increase the distance between the dongles.

Q3. The phone doesn't work at all.

A3. Check these items first:

- Make sure the battery is not running off.
- Make sure the dongle, AirLive SkyPhone-1000 and Skype communicate well on the host computer.
- If the problem persists, reset the phone by inserting a paperclip into the **Reset** hole. Press lightly and then release to power off the phone. Then re-power on the phone by long-pressing the **Power** key.

Q4. While using the wireless phone:

- There is no dial tone after pressing the dial key.
- I cannot hear the other party on my wireless phone.
- I hear the other party on my PC's sound card (or another USB speaker) instead of the wireless phone.
- The other party cannot hear me.

A4. Make sure your software is configured to use wireless phone as the audio in/out device.

In Skype window, click **Tools > Options > Sound Devices**. Make sure the **Audio In** (microphone) and **Audio Out** (speaker) and are correctly configured to use **USB Audio Device**, i.e. the wireless phone.

Q5. When the phone's USB port is connected to a computer for charging purpose, can I unplug the dongle and allow the phone to directly communicate with the host computer?

A5. No. The phone's USB port is only for power charging but not for data transfer. It always needs a USB dongle as a data transceiver.

Q6 Will the Wi-Fi devices interference with the phone?

A6. Although the wireless phone shares 2.4 GHz frequency band with Wi-Fi devices (such as the popular IEEE 802.11x wireless network device in office use), the phone has implemented Adaptive frequency hopping (AFH) solution to mitigate radio interference so that the phone can co-exist with Wi-Fi devices without degrading the wireless performance.

Q7. Why cannot my contact's name correctly displayed? The name is in one of the supported languages of the phone.

A7. Make sure the language is correctly displayed in Skype, If not, you need to install related language on your system. (Refer to Windows Online help for more information.)

9. Specifications

RF	Wireless Interface	2.4GHz Radio Frequency Technology
	Dongle Interface	USB 1.1 A type male connector
	Operating Range	Indoor: > 15 meters, Outdoor: > 30 meters (in an open environment)
	Transmitter power	+17 dBm
	RSSI	-35 to -80 dBm
	Profile Support	Headset, Handfree, Serial Port Profile (SPP), Generic Access Profile (GAP), and Service Discovery Profile (SDP)
	RF Out Power	50 mW
	Operating Channels	Supports frequency hopping on 79 channels
	Features	<ul style="list-style-type: none"> • Up to seven simultaneous connections within effective range • RF interface baud rate 1Mbps transmit & receive • Adaptive Frequency Hopping (AFH), support for Bluetooth + Wi-Fi co-existence
Voice	<ul style="list-style-type: none"> • Full duplex • Toll quality (8KHz, 16bit voice) • CVSD encode/decode for voice bits stream passing through host 	
Battery	Power Source	One 850 mAh Li-Polymer rechargeable battery
	Operating Voltage:	DC 5V (Bus-Powered)
	Battery Life	Standby Mode: 60 hours Continuous use: 6 hours

	Power Saving	Enters standby mode after 30 secs of inactivity
	Charging Method	USB bus power, USB 1.1 Mini B type connector.
Phone Controls		<ul style="list-style-type: none"> • Volume Up, Volume Down, Hold • Switch on/off • Control interaction with Skype AP • Numerical keys • Telephone control-like keys
LCD Screen	Resolution	128 x 32 pixels
	Size	31 X 19 mm
	Backlight	Blue
	Display Mode	FSTN, POSITIVE, TRANSFULECTIVE
	Language Support	English, French, German, Italian, Spanish, Portuguese, Polish, Swedish, Danish, Finnish, Norwegian, Traditional Chinese, Japanese
Speaker	Size	Size: 13 mm
	Response Frequency:	300 ~ 3.4K Hz
	Output Impedance:	150 ohm
	Signal-To-Noise Ratio	90 dB
Microphone	Sensitivity	- 40 +/- 2 dB
	Directivity	Onmidirectional
	Response Frequency	20 ~ 20K Hz
Selectable Settings	Speaker Volume, Holding sound, Ringtone, Key Tone, Ringing Volume	
Temperature	Operating: 0~40 °C Storage: -20~60 °C	
Humidity (Non-Condensing)	Operating: < 90% Storage: < 95%	

*Specifications are subject to change without notice.

10. Regulatory Compliance

FCC Conditions

This equipment has been tested and found to comply with Part 15 of the FCC Rules. Operation is subject to the following two conditions:

- (1) This device may not cause harmful interference, and
- (2) This device must accept any interference received. Including interference that may cause undesired operation.

CE

This equipment is in compliance with the requirements of the following regulations:
EN 55 022: CLASS B

WEEE Information

For EU (European Union) member users:

According to the WEEE (Waste electrical and electronic equipment) Directive, do not dispose of this product as household waste or commercial waste. Waste electrical and electronic equipment should be appropriately collected and recycled as required by practices established for your country. For information on recycling of this product, please contact your local authorities, your household waste disposal service or the shop where you purchased the product.

