



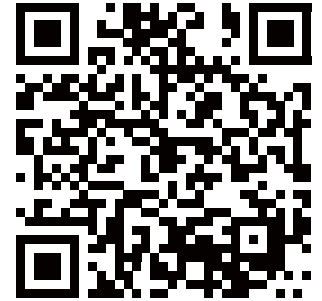
SmartCube 300W

**Intelligent 3MP Wireless Cube IPCAM
with Temperature and Humidity Sensor**

Quick Installation Guide

Support

You can download the complete guides and supporting programs from <http://www.airlive.com/product/smartcube-300w/download>, or scan the QR code here.



Please consult with the FAQs <http://www.airlive.com/product/smartcube-300w/faq> before writing to OvisLink Tech Support Team for further assistance



For any other question, please read the user manual in the CD or mail to tech@airlive.com for technical support.

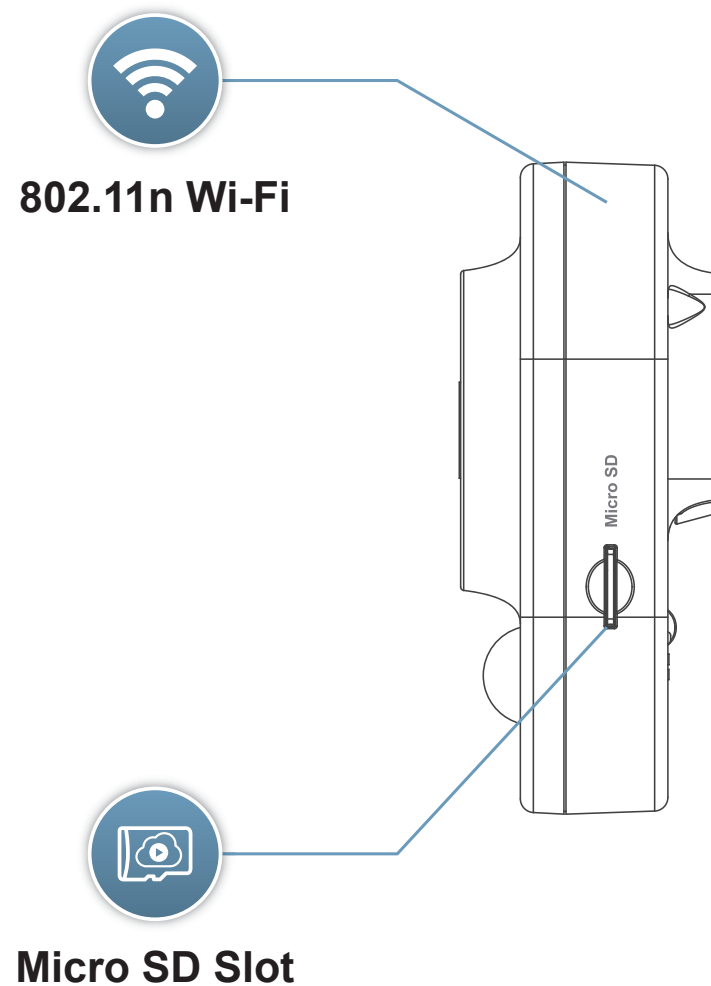
SmartCube 300W Package Contents

Please check the package contents and contact your distributor if any part is missing.

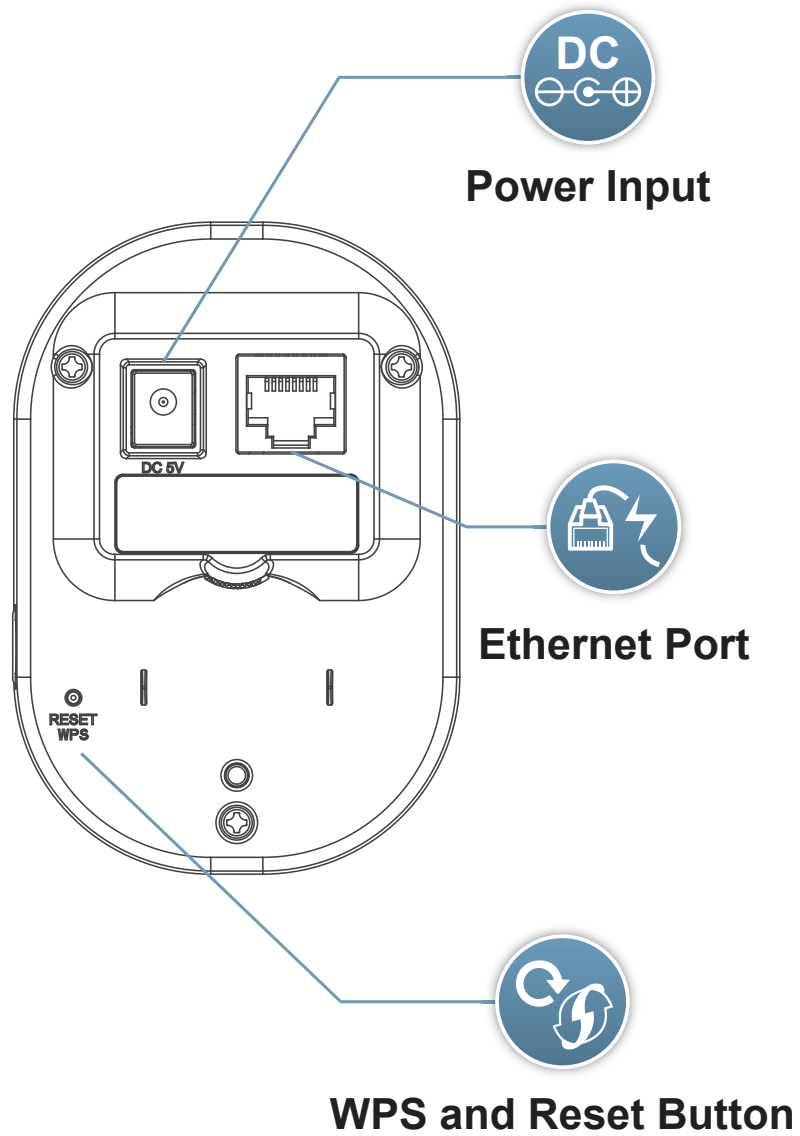


| | |
|---|---|
| 1 | SmartCube 300W |
| 2 | 5V AC Power Adapter |
| 3 | Mounting Accessories (Screws / Plastic Anchors) |
| 4 | Quick Installation Guide |
| 5 | User Manual CD |
| 6 | Label |

I/O Interface

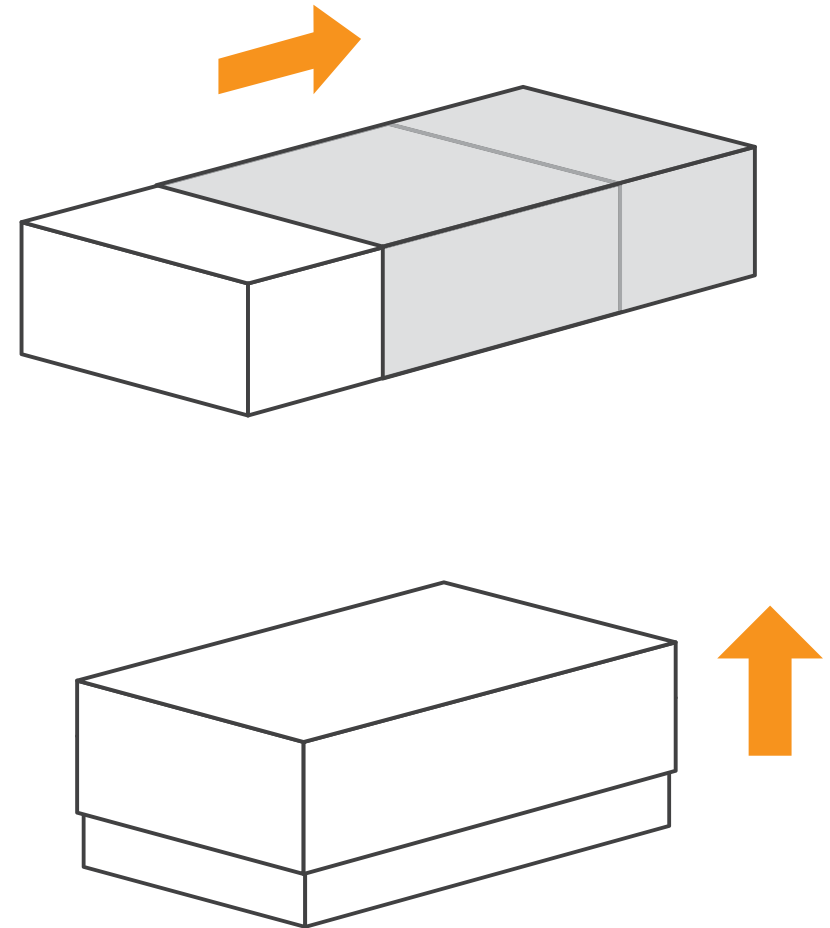


I/O Interface

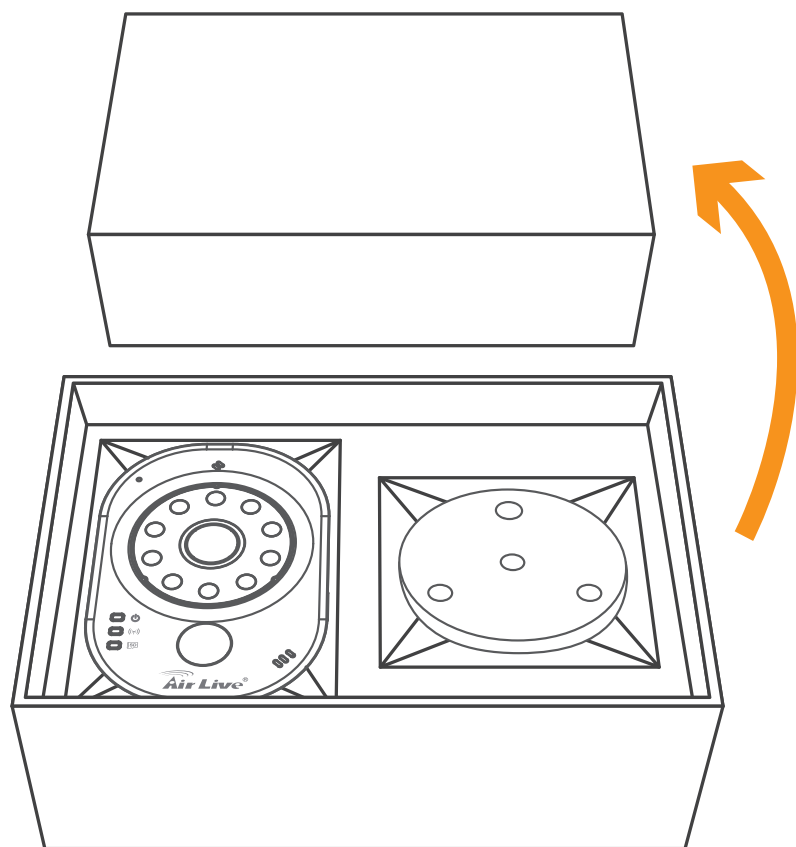


01 Remove Cover box

Remove Cover box

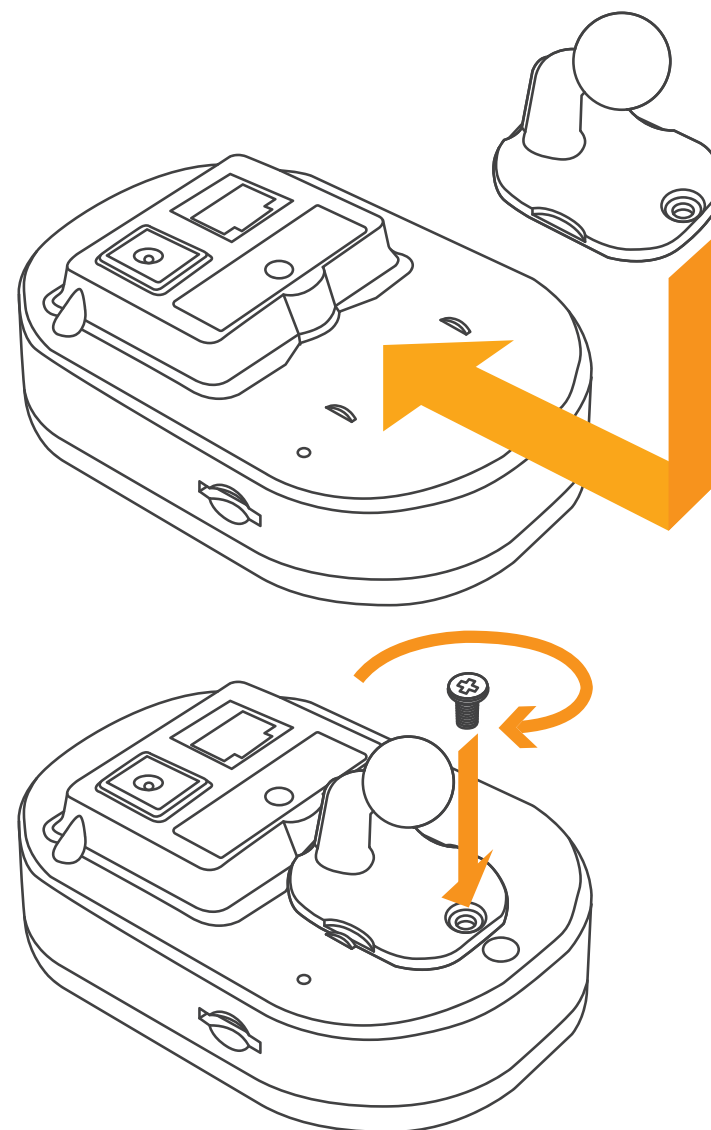


01 Remove Cover box

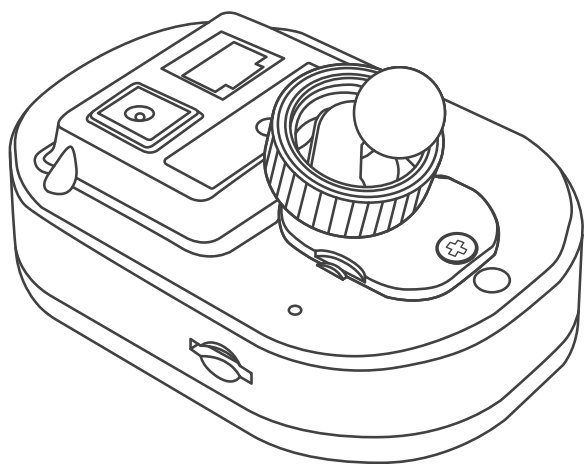
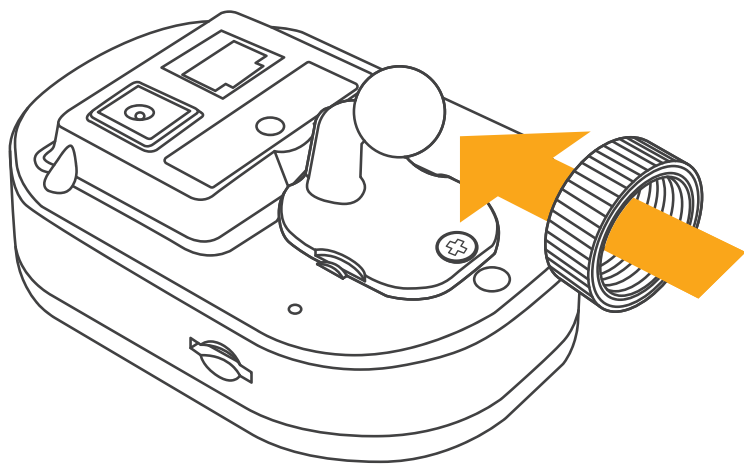


02 Assemble the bracket and the stand

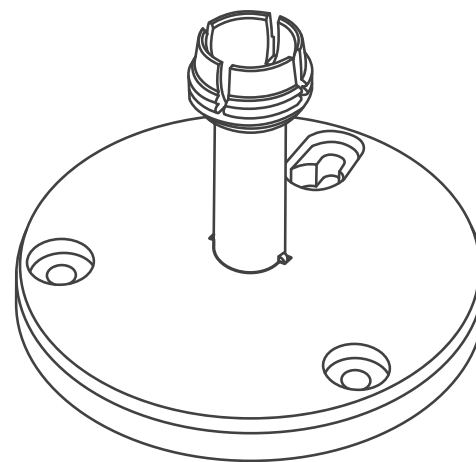
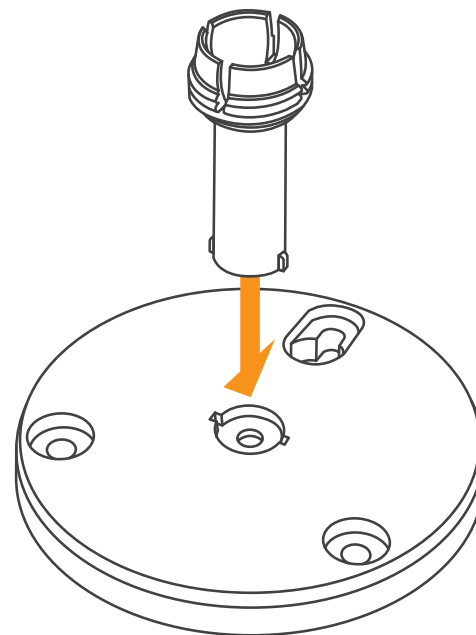
Assemble the bracket and the stand



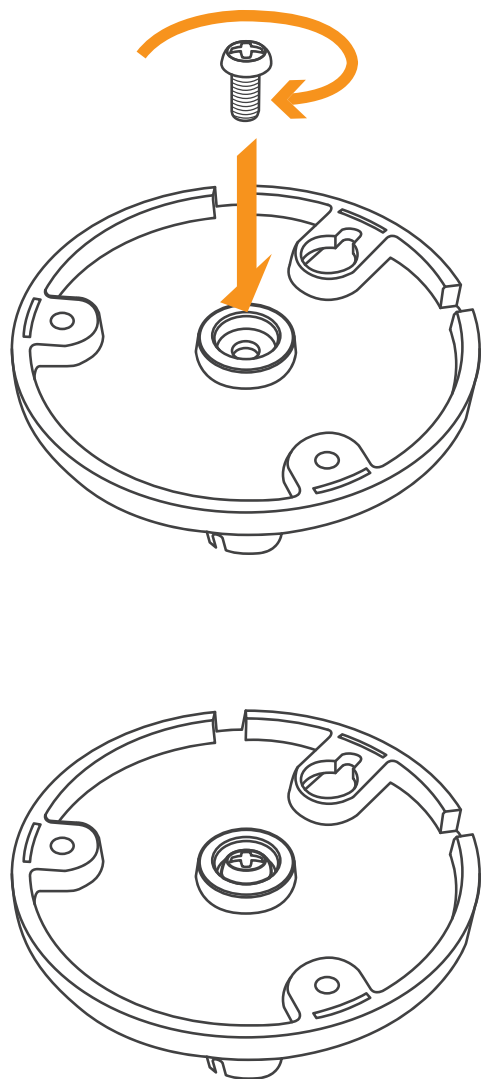
02 Assemble the bracket and the stand



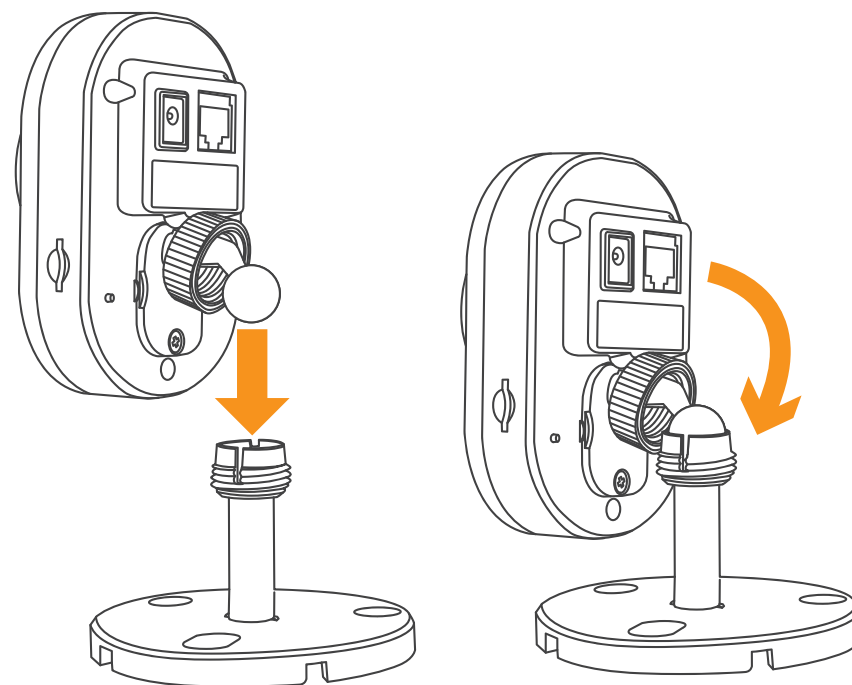
02 Assemble the bracket and the stand



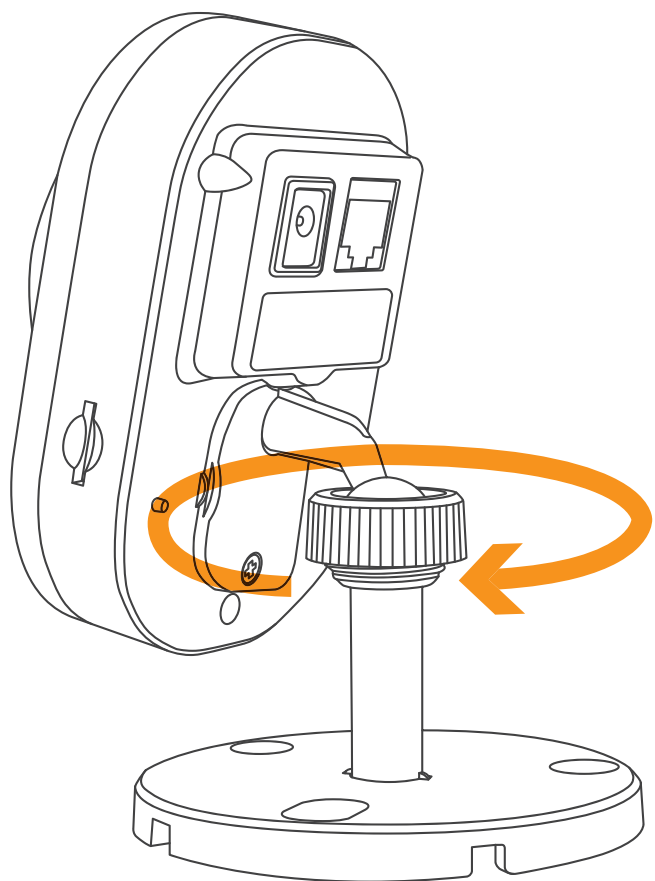
02 Assemble the bracket and the stand



02 Assemble the bracket and the stand

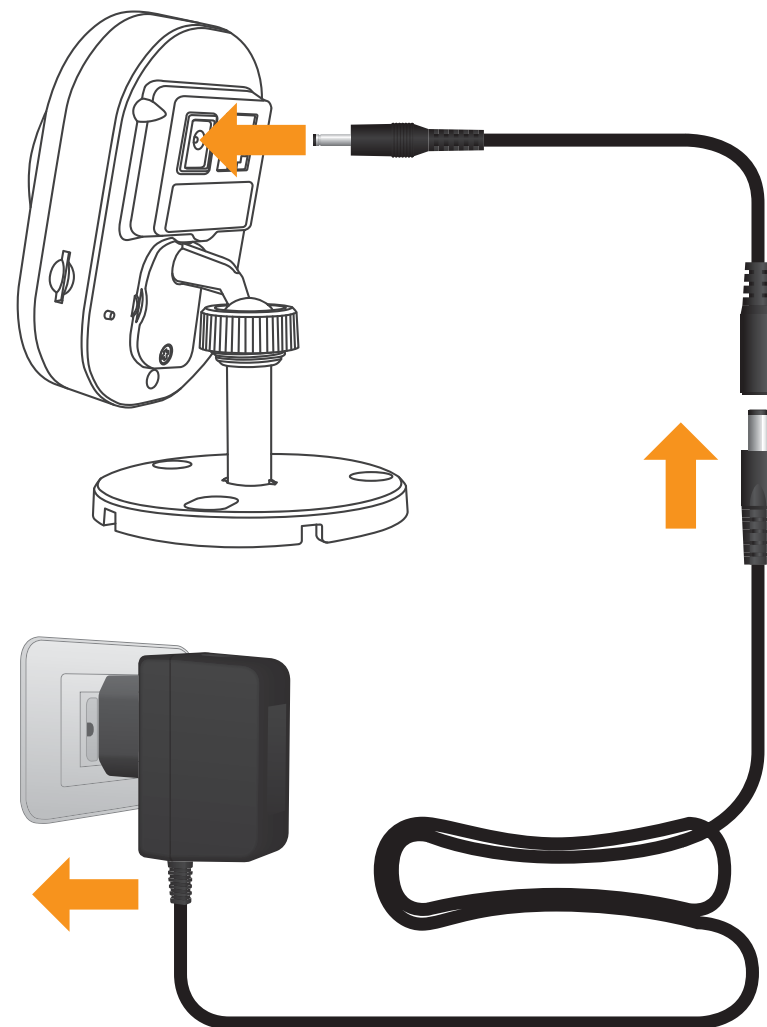


02 Assemble the bracket and the stand



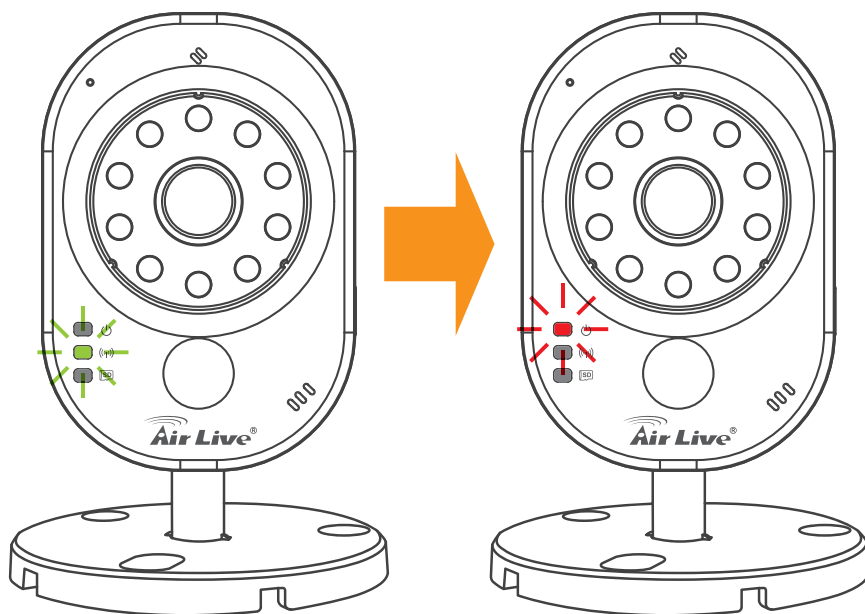
03 Plug the adapter

Plug the power cable into the camera.



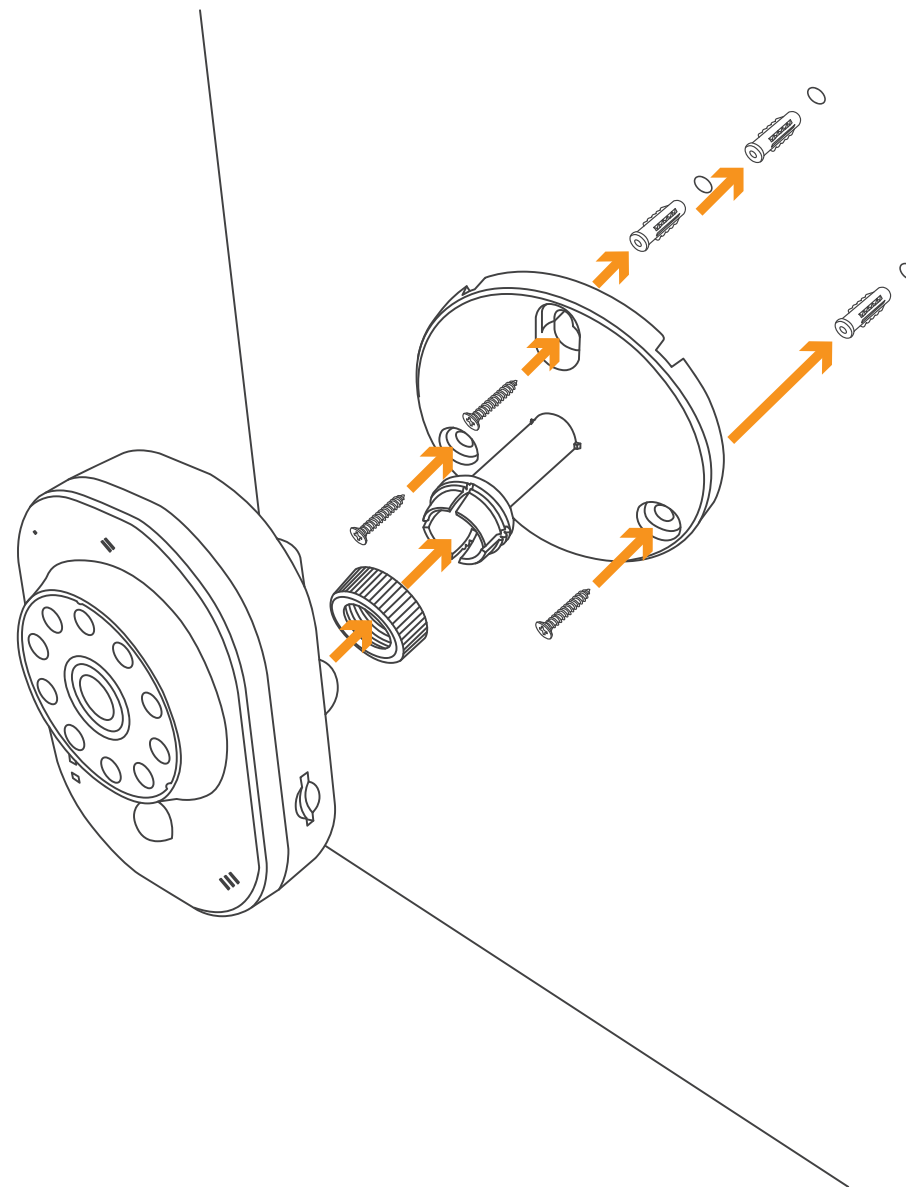
04 Power on SmartCube 300W

When SmartCube 300W is powered on, the green led will be on first. After SmartCube 300W is ready, the red len will be on and the green led will be off.

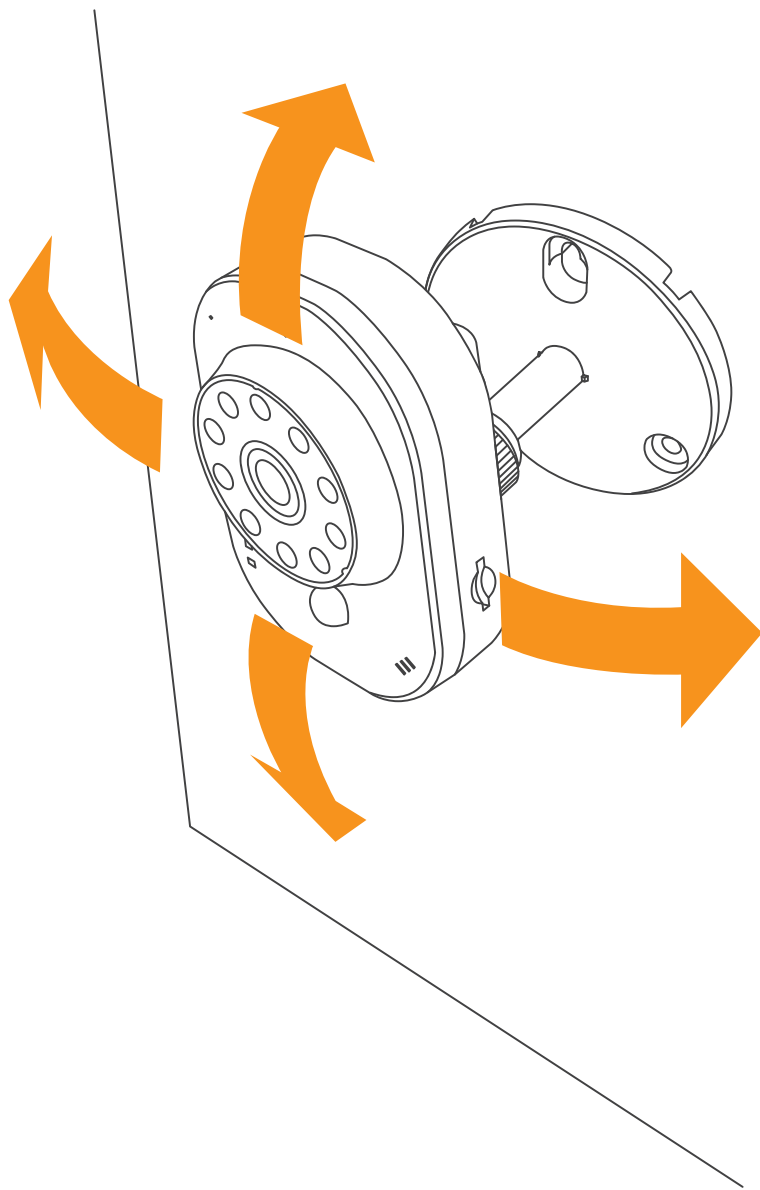


05 Mount the camera

Please use three screws to fix the camera.



06 Adjust the View of the Camera



07 WiFi Connection

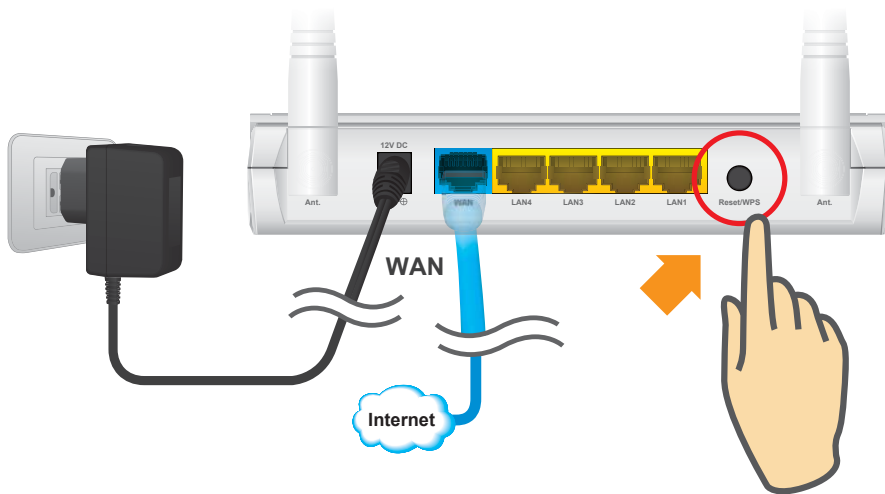
There are two ways to connect to WiFi

1. WPS connection.(WPS function only supports that the router is in WPA2 AES security protocols or no protected password.)
2. Connect wire to setup wireless connection.



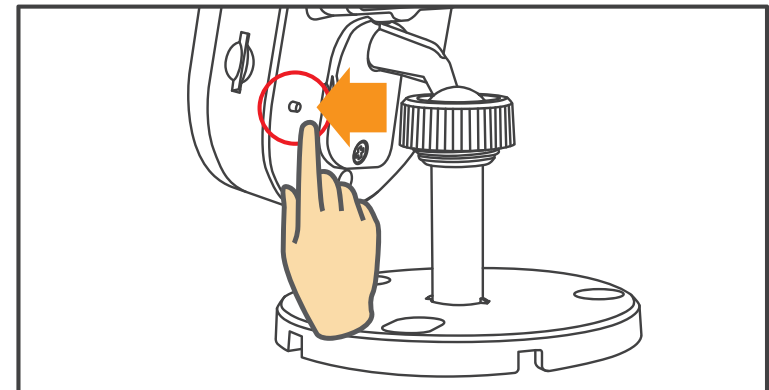
08 WPS Wireless connection

Click WPS button on the router first.



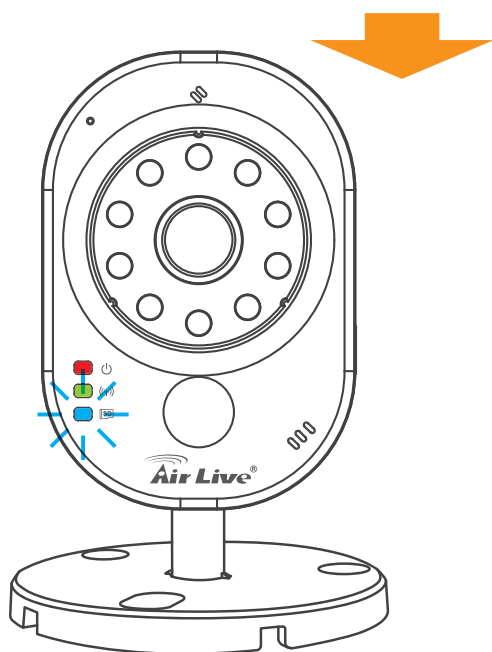
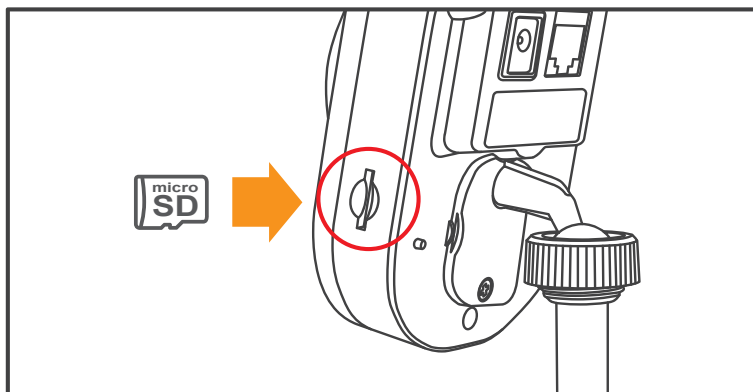
08 WPS Wireless connection

Click Reset/WPS button on SmartCube 300W then the green led will be on for 2 minutes. When SmartCube 300W connects to the router successfully, the green led will be flashing.



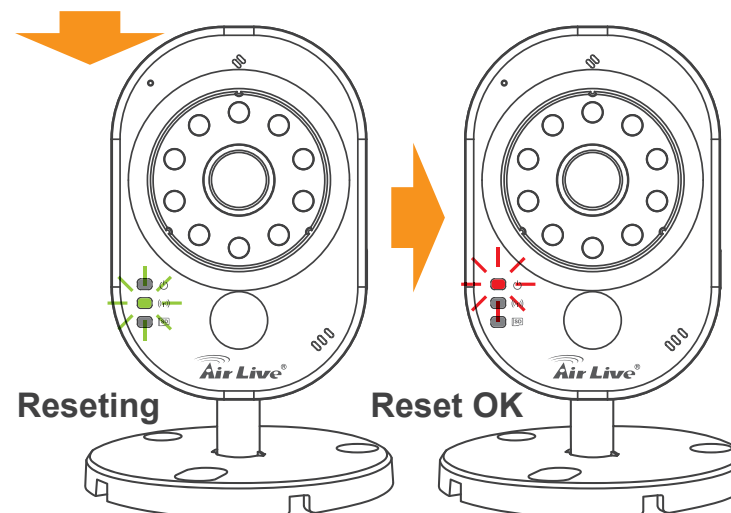
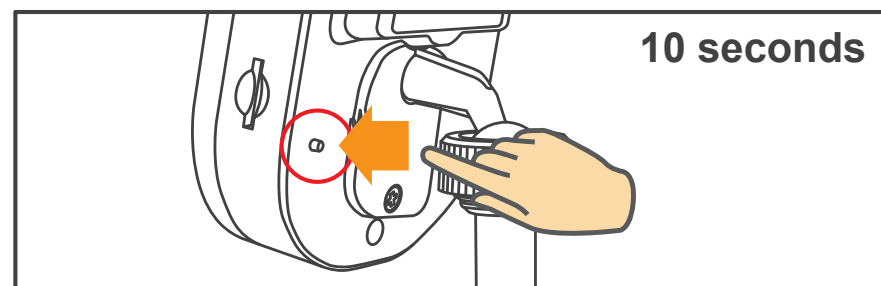
09 Insert a Micro SD

After inserting a micro SD card, the blue led will be on. Please use empty microSDHC Class 10 8GB or better.



10 Reset the Camera to default settings

This step is not needed during the setup. But if the camera is not responding and you want to restore the camera to default settings. Please press and hold the Reset/WPS button for 10 seconds, then release the button. The red led will be off and green led will be on. After SmartCube 300W is ready, the red led will be on and the green led will be off.



11 Set up the camera by Ethernet port

Please skip this step if your camera has made successful wireless connection to your router. However, if your wireless router does not have a WPS button. You can configure the camera by connecting the SmartCube's LAN port to your router's LAN port by Ethernet cable. Then use your PC or Notebook to setup the camera's WiFi setting.



Note: If you want to connect your PC directly to the camera by Ethernet cable, the IP camera's default LAN port IP address is 192.168.1.100.

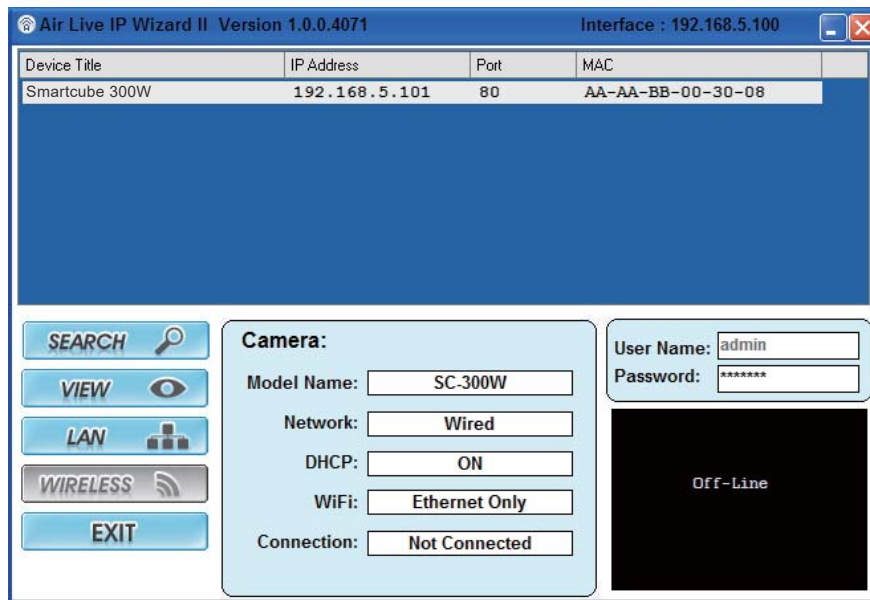
12 Setup Wifi connection by PC

If user wants to setup wireless connection by PC or Notebook. Please download IP wizard II from AirLive SmartCube 300W support page <http://www.airlive.com/product/SmartCube-300W>



13 Find the Camera using IP Wizard

Install and start the AirLive Wizard. The program will automatically search for all cameras on your network. Double click on the camera you want to configure and the program will open your web browser to configure the camera.



Important Note: Please make sure you have made Internet Explorer as your default browser first.

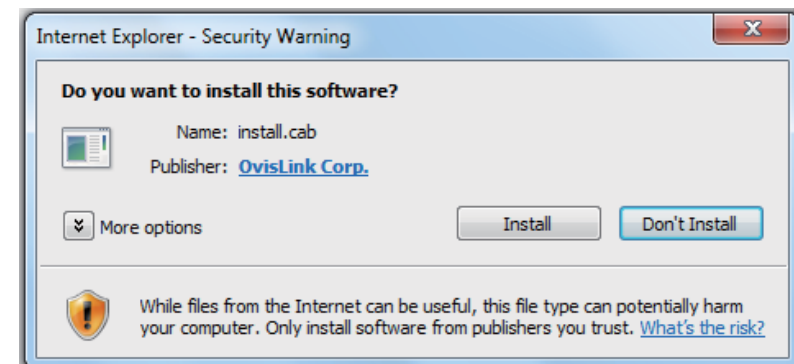
14 Access Camera on Web UI

Please use IE to log in the camera. The default username and password is **admin/airlive**.



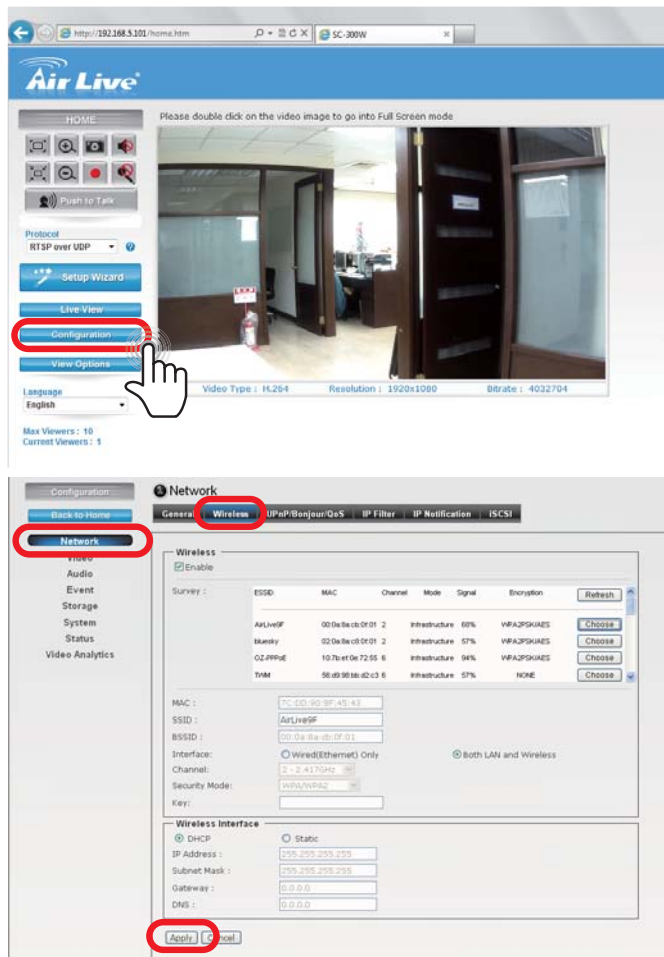
You need to install the ActiveX on your PC when you first access to the camera web UI.

This website wants to install the following add-on: 'install.cab' from 'OvisLink Corp.'.



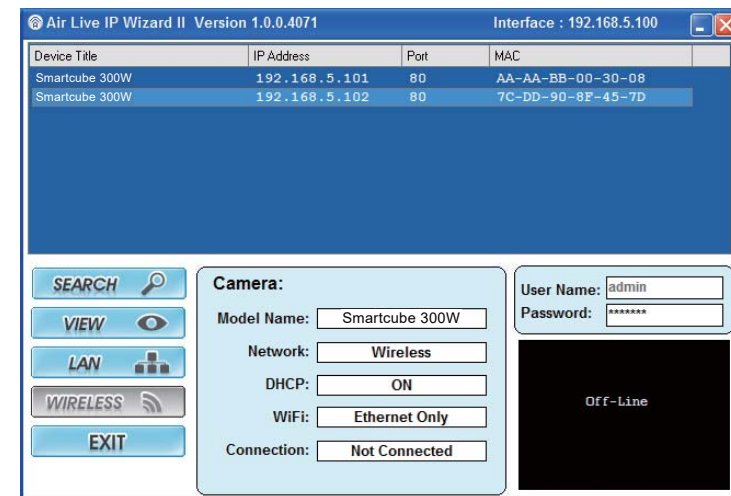
15 Configure the camera's wireless setting

On the camera's web UI, please click on the "Configuration" icon to go into the configuration page. Then click on "Network"->"Wireless" page. Select your wireless router's SSID and key in the security key. Then click on "Apply" button.



16 Check wireless connection

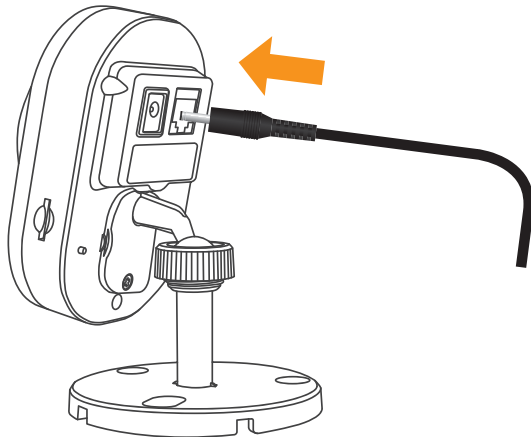
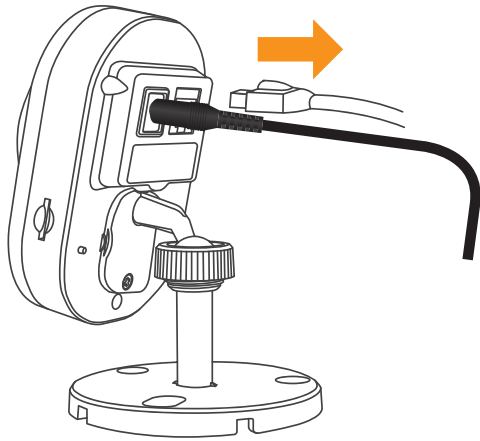
Please open the AirLive IP Wizard program and click on search icon. You should see 2 "SmartCube 300W" on the list if the camera has made successful wireless connection to your router. Now, please disconnect the Ethernet cable between the camera and the router. You should be able to access the camera using wireless connection from now on.



Important! After the wireless is established, if user needs to remove the Ethernet cable, please click on the "reboot" button first, then unplug the Ethernet cable immediately. This step must be performed for the camera to operate properly.

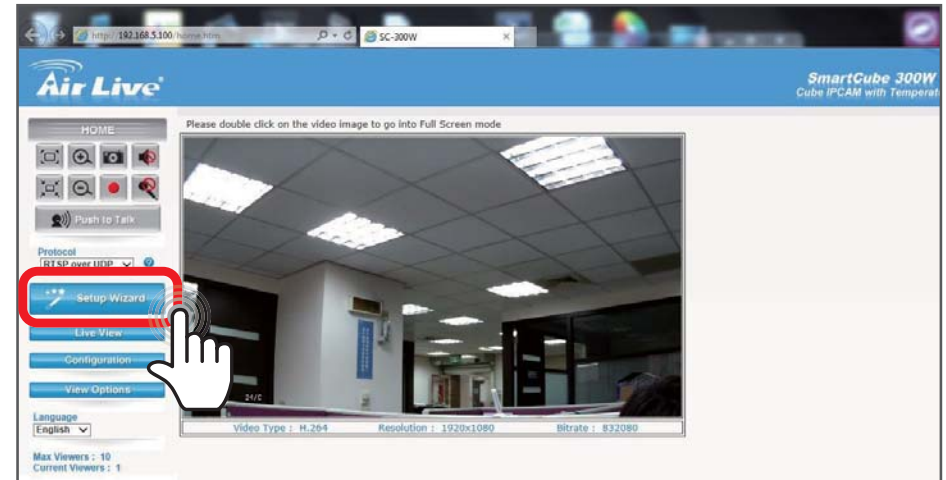
17 Mobile Wizard Wifi Setup

When user unplugs the Ethernet cable, please replug the power cable at the same time. Wireless connection will be rebuilt in three minutes.



18 SmartCube 300W Setup

Please select setup page, click "Wizard" button.



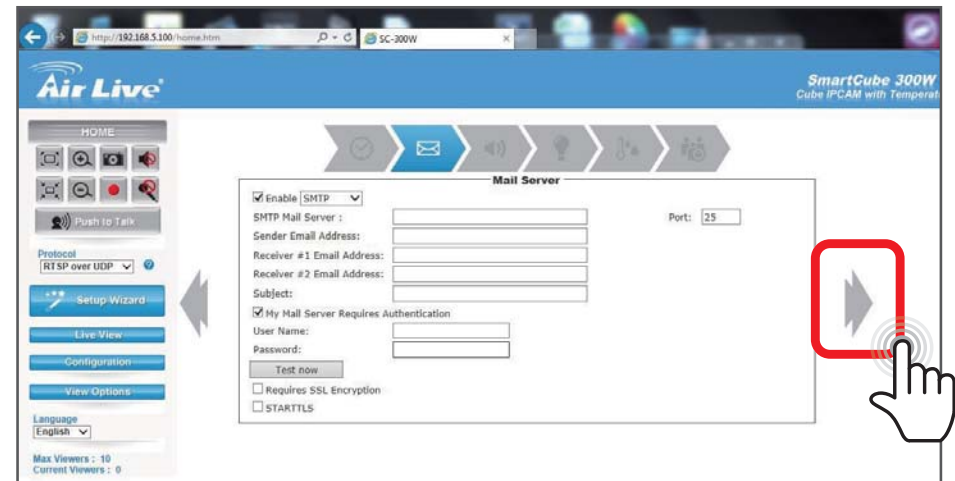
19 Time Adjustment

Adjust the time and date of the camera and click "Next" button.



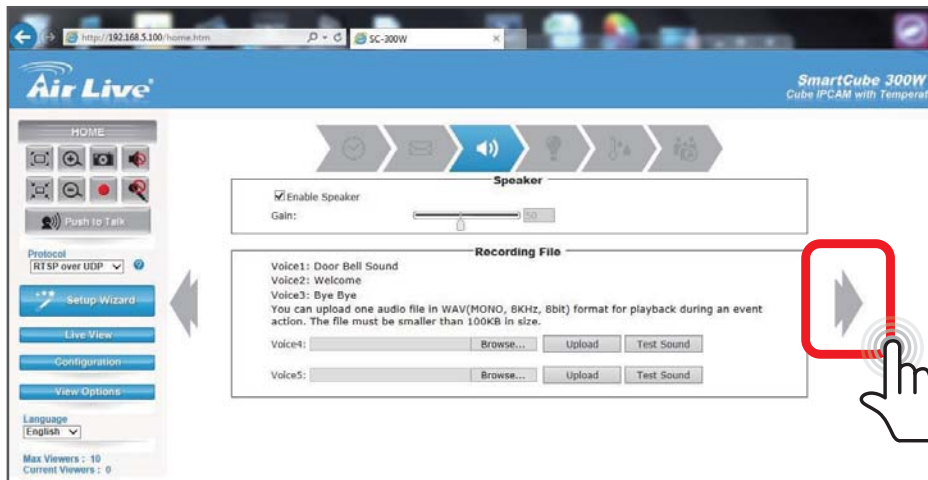
20 E-mail Settings

It requires E-mail information to send the counting report.



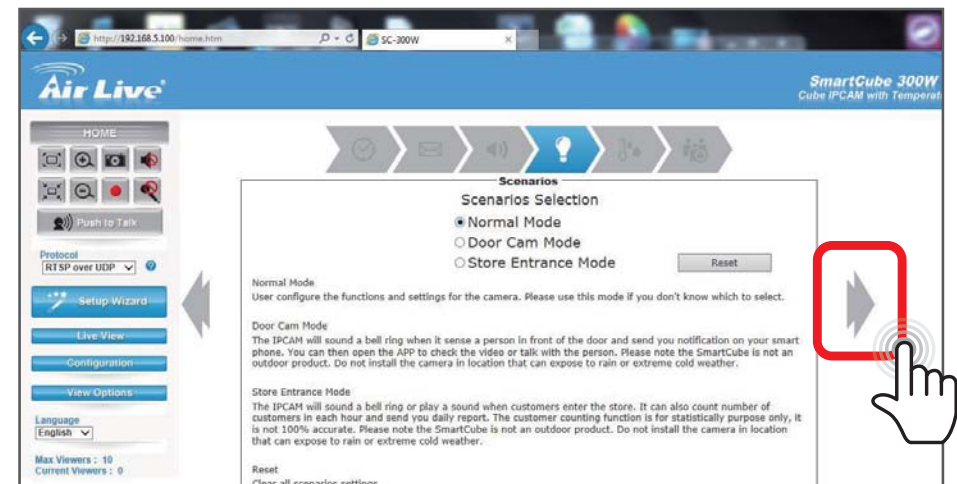
21 Sounds

You can adjust the sound volume on this page



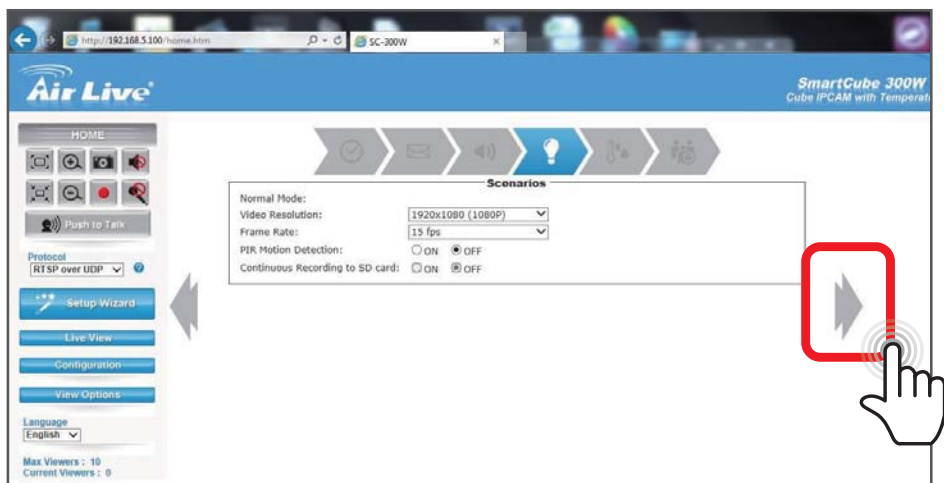
22 Scenarios Setup

There are three scenarios. 1. Normal Mode 2. Door Cam Mode. 3. Store Entrance Mode. Please select the scenario to fit your environment and click "Arrow" button.



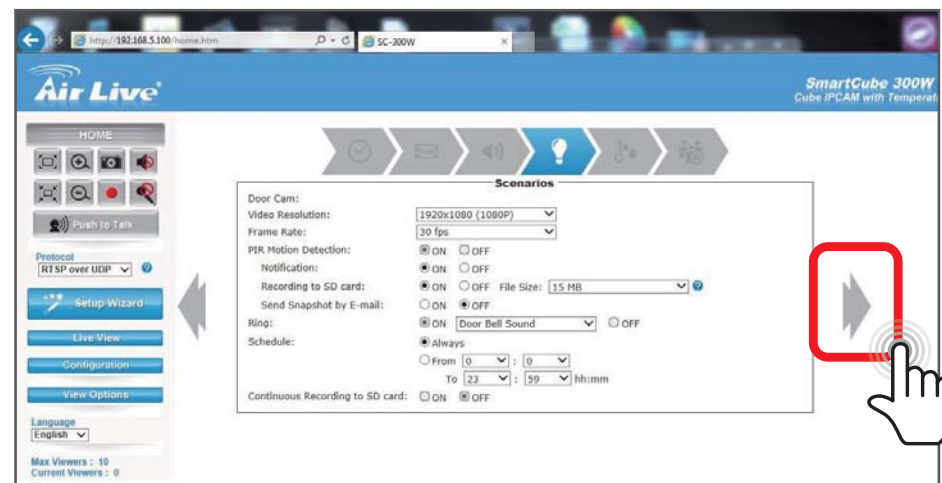
23 Normal Mode

You can adjust resolution, frame rate and PIR motion detection in normal mode.



24 Door Cam Mode

In door cam mode, SmartCube 300W will detect people, send the notification to the smartphone and record video to SD card.



25 Store Entrance Mode

You can choose between face detection or object counting to count the number of customers.



26 Face Detection

The face detection method detect faces as the customers walk into the store



26 Face Detection

| | Face Detection |
|----------------------------|-------------------------------|
| Face View | Yes |
| Installation Orientation | Facing the Entrance |
| Ceiling Height Requirement | Less than 3.2 meter |
| Advantage | Get face shots, easy-to-setup |
| Disadvantage | Voice greeting for entry only |
| Recommend Environments | For store and shop entrance |

26 Face Detection

You can adjust the settings to fit the environment.



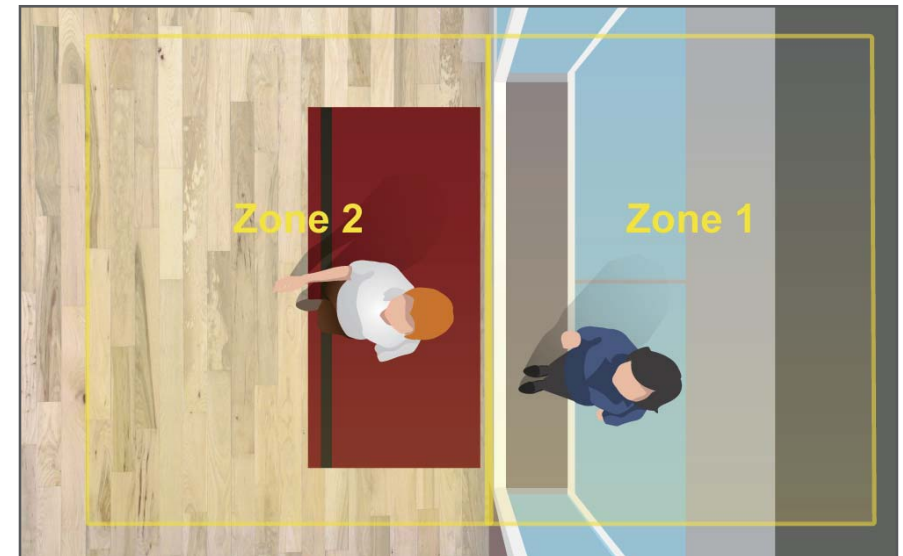
27 Object Counting

"Object Counting register a count when people cross from zone 1 to zone 2 or vice versa. It can have independent count for entry and exit.



27 Object Counting

Object Counting require ceiling of higher 3.2 meters for installation. The higher it is, the more accurate counting result is. It can be installed side way or over the top.

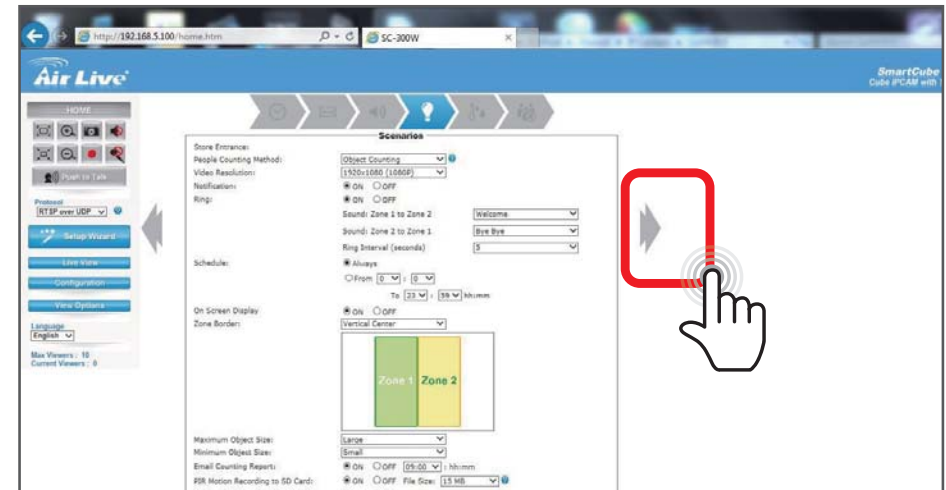


27 Object Counting

| | Object Counting |
|----------------------------|---|
| Face View | No |
| Installation Orientation | Over the top or Side View |
| Ceiling Height Requirement | More than 3.2 meter |
| Advantage | Higher accuracy, separate greeting voices for entry and exit. |
| Disadvantage | Harder to setup. No front face shot. |
| Recommend Environments | For shopping mall and super market entrance |

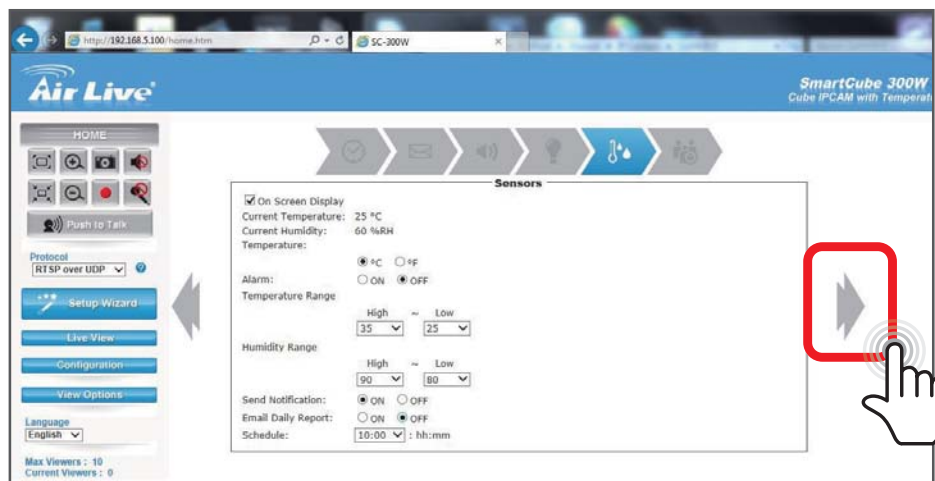
27 Object Counting

You can adjust the settings to fit the environment.



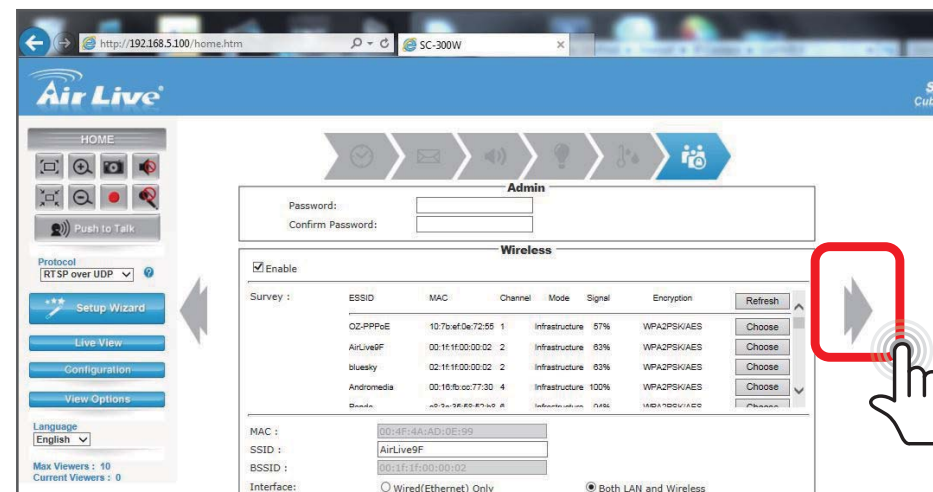
28 Sensors

You can set the Temp and Humidity alarm settings on this page.



29 Password

On this page you can change the password and Setup the wireless connection



Support

Declaration of Conformity

We, Manufacturer/Importer

OvisLink Corp.

5F., NO.6, Lane 130, Min-Chuan Rd., Hsin-Tien Dist., New Taipei City 231, Taiwan

Declare that the product

Intelligent 3MP Wireless Cube IPCAM with Temperature and Humidity Sensor

AirLive SmartCube 300W is in conformity with In accordance with 2004/108/EC Directive

| Clause | Description |
|---|---|
| ■ EN 300 328 V1.9.1 | Electromagnetic compatibility and Radio spectrum Matters (ERM); Wideband transmission systems; Data transmission equipment operating in the 2,4 GHz ISM band and using wide band modulation techniques; Harmonized EN covering the essential requirements of article 3.2 of the R&TTE Directive |
| ■ EN 301 489-1 V1.9.2 | Electromagnetic compatibility and Radio spectrum Matters (ERM); ElectroMagnetic Compatibility (EMC) standard for radio equipment and services; Part 1: Common technical requirements |
| ■ EN 301 489-17 V2.2.1 | Electromagnetic compatibility and Radio spectrum Matters (ERM); ElectroMagnetic Compatibility (EMC) standard for radio equipment; Part 17: Specific conditions for Broadband Data Transmission Systems |
| ■ EN 60950-1:2006/ A11:2009/A1:2010/A12:2011 | Information technology equipment - Safety - Part 1: General requirements |

■ CE marking



Manufacturer/Importer

Signature :

Name : Albert Yeh

Position/ Title : Vice President Place : Taiwan Date : 2015/10/30

Regulatory Approvals

● FCC Statement

This equipment has been tested and found to comply with the limits for a Class A digital device, pursuant to part 15 of the FCC Rules. These limits are designed to provide reasonable protection against harmful interference when the equipment is operated in a commercial environment. This equipment generates, uses, and can radiate radio frequency energy and, if not installed and used in accordance with the instruction manual, may cause harmful interference to radio communications. Operation of this equipment in a residential area is likely to cause harmful interference in which case the user will be required to correct the interference at his own expense.