



# Air Live<sup>®</sup>

[www.ovislink.com.tw](http://www.ovislink.com.tw)






*GPRS PC Card Modem*

*WPG-1500*



**Powered by OvisLink Corp.**

# Table of Contents

<b>INTRODUCTION</b> .....	<b>1</b>
FEATURES .....	2
INSTALLATION .....	3
Install the Device , Driver & Utility ...	3
MOBILE PHONETOOLS .....	30
Enter the PIN Number .....	30
Mobile PhoneTools Main Window ...	31
Mobile PhoneTools Functions Panel .	33
Configure Mobile PhoneTools .....	35
Main Phone Features .....	37
 GPRS Connection .....	39
 SMS .....	47
 E-mail .....	52
 Fax .....	57
 Phonebook.....	64
<b>SPECIFICATIONS</b> .....	<b>68</b>

## INTRODUCTION

GPRS is a new wireless technology standard, which improves the data service that can be added to GSM-based personal communications service network and enable interoperability between the Internet and the GSM network.

**The GPRS Wireless PC Card** is a tri-band Type II card that lets you connect your notebook to GSM and GPRS network. It sends and receives data via mobile telephone networks, so it allows you to take full advantage to access to your corporate network, e-mail, and the Internet worldwide.

Plus, with the network installation simplicity and flexibility, you can eliminate the need to pull cable through walls and ceilings and allow the network to go where wires cannot go.

**The GPRS Wireless PC Card** is the perfect solution to connect if you work offsite, visit customers, or travel.

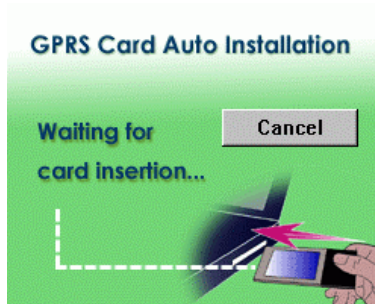
## Features

- Provides data connectivity at speeds of up to 85.6kpbs.
- GPRS/GSM over-air security with built-in authentication and encryption making it one of the most secure public wireless systems in the world.
- Uses GPRS/GSM wireless system to connect your notebook computer to your network or the Internet.
- Supports PC Card hot swap and true Plug & Play.
- Freedom to roam while staying connected
- Supports Window 98/2000/ME/XP, PPC2000, and PPC2002
- Lower power consumption
- Easy to install and configure

## INSTALLATION

### Install the Device , Driver & Utility

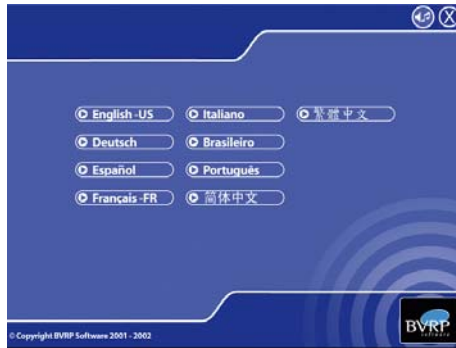
1. Put the supplied CD into the CD-ROM drive , then the screen will prompt you to insert the PC card.



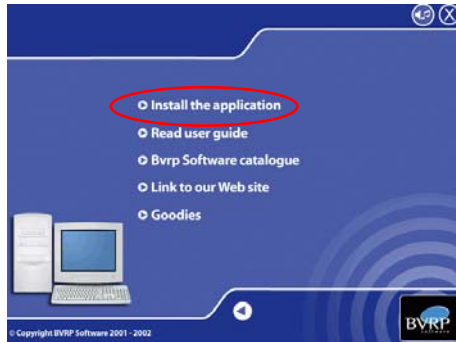
2. Place the SIM card into the card slot of the PC card and insert the PC card into the CardBus slot.

### For Windows 98

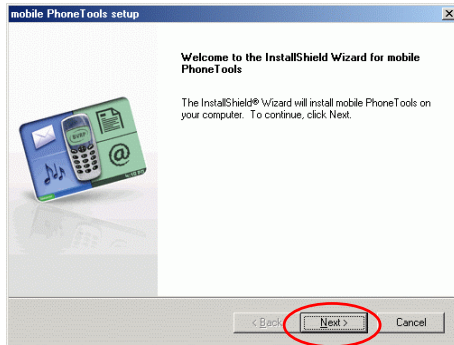
1. Select the language you need.



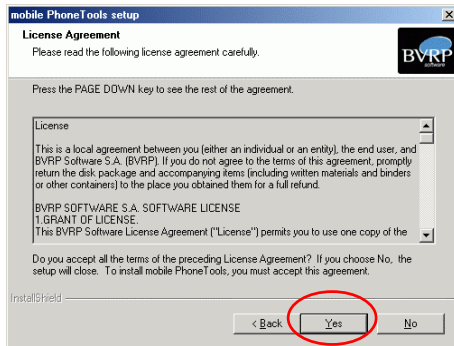
2. Select **Install the application.**



3. Click **Next.**



#### 4. Click Yes.



#### 5. Click Next.

mobile Phone Tools: setup

**User Information**  
Enter your registration information.

Please enter your name and the name of the company for whom you work.

Name:

Company:

< Back   **Next >**   Cancel

6. Click Next.

mobile Phone Tools: setup

**Additional parameters**  
You can enter any additional communication information that may be required.

If you want your faxes to be identified to the receiving party, please enter a 20 characters description in this field.

Identifier:

You can also enter your phone and fax number.

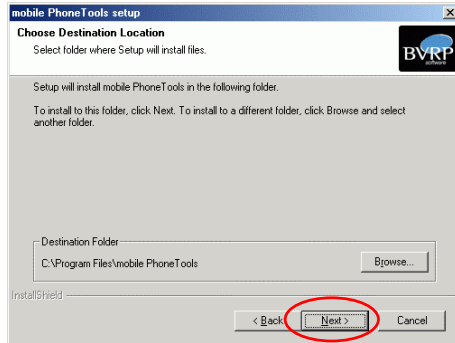
Phone:

Fax:

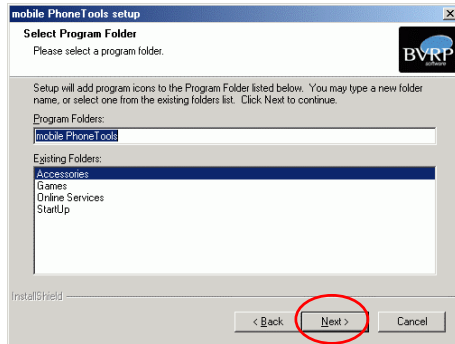
< Back   **Next >**   Cancel

7. Click Next.

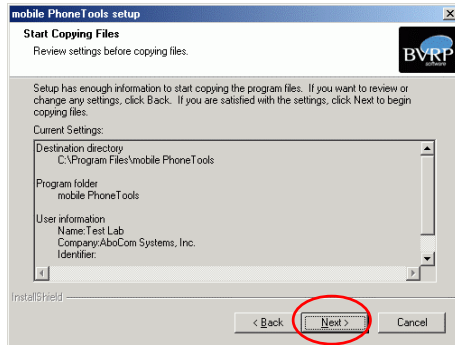




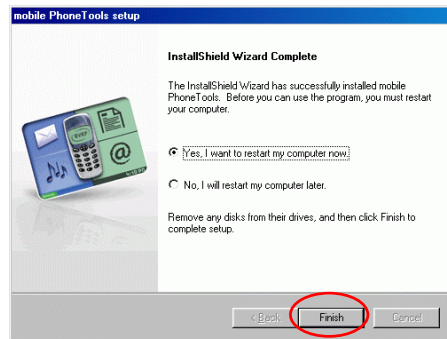
8. Click Next.



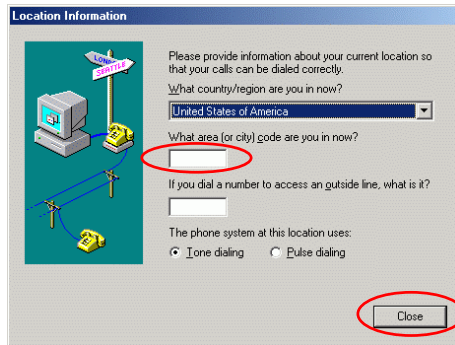
9. Click Next.



10. Select Yes, I want to restart my computer now and click Finish.



11. Enter the **area code** you are in now and click **Close**.



## For Windows ME

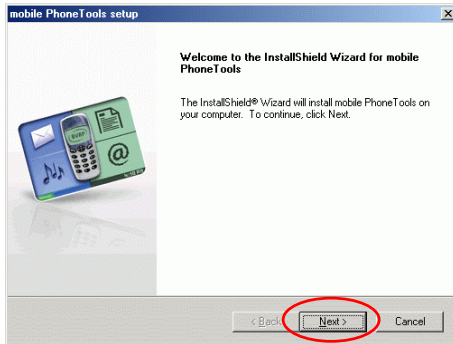
1. Select the language you need.



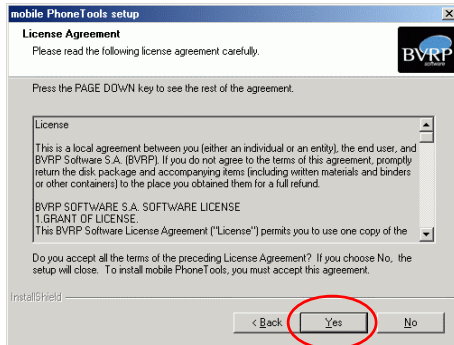
2. Select **install the application**.



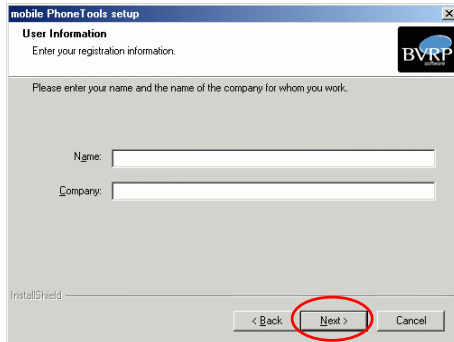
3. Click **Next**.



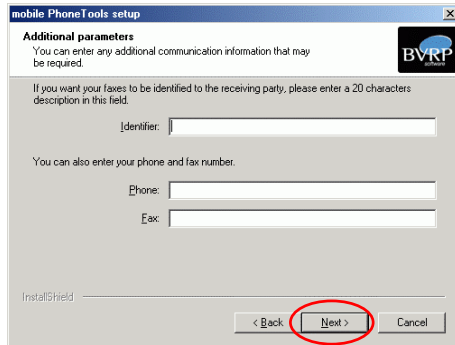
4. Click **Yes**.



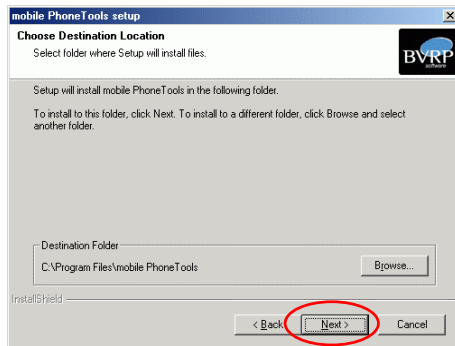
## 5. Click Next.



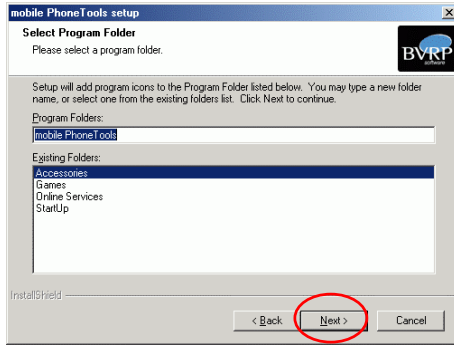
## 6. Click Next.



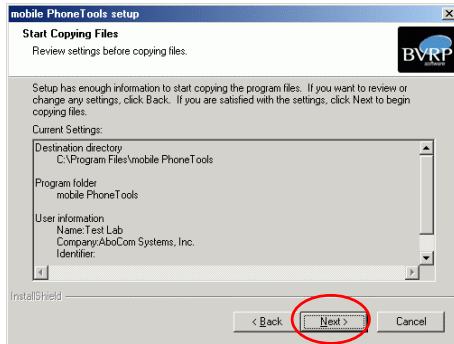
## 7. Click Next.



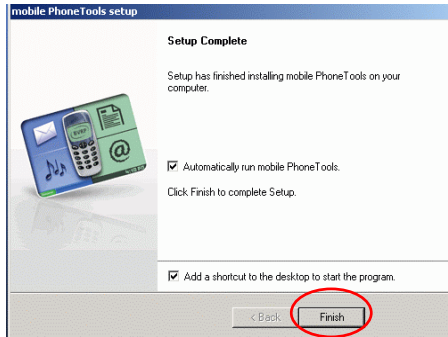
## 8. Click Next.



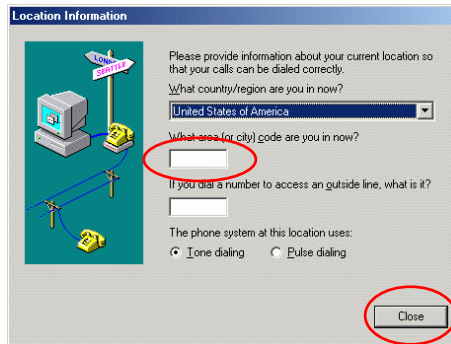
9. Click **Next**.



10. Click **Finish**.



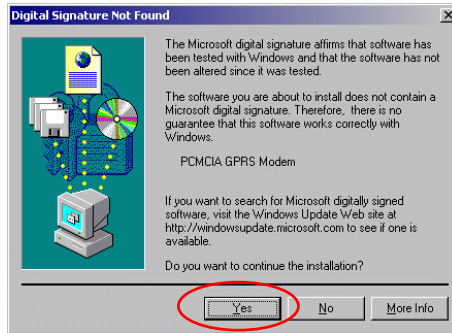
11. Enter the area code you are in and click **Close** to continue.





## For Windows 2000

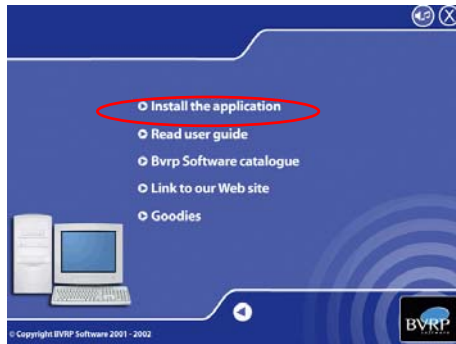
1. Click **Yes** to continue



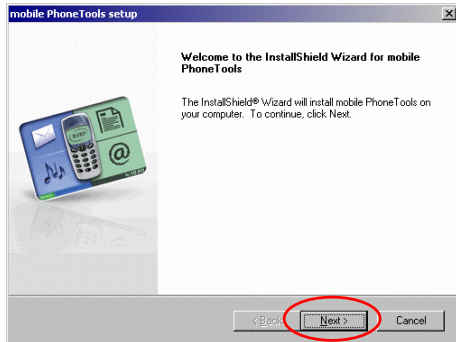
2. Select the language you need.



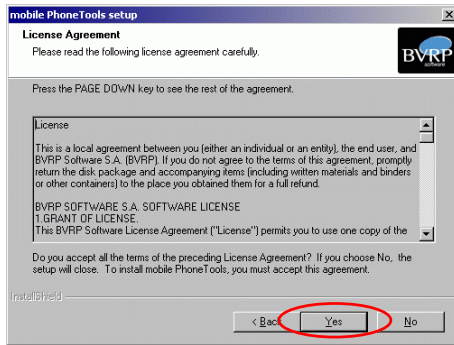
3. Slect **Install the application.**



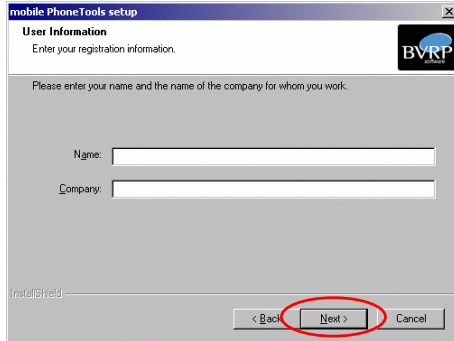
4. Click Next.



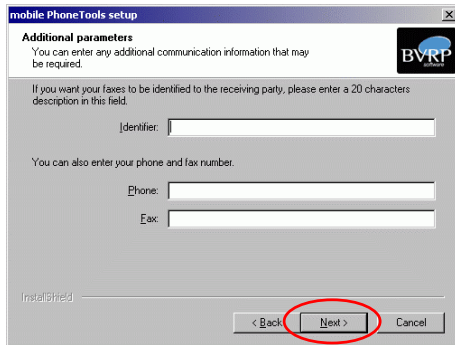
5. Click Yes.



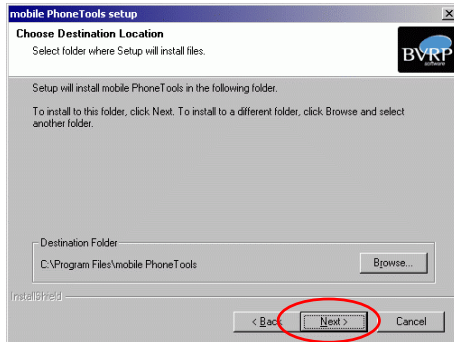
## 6. Click Next



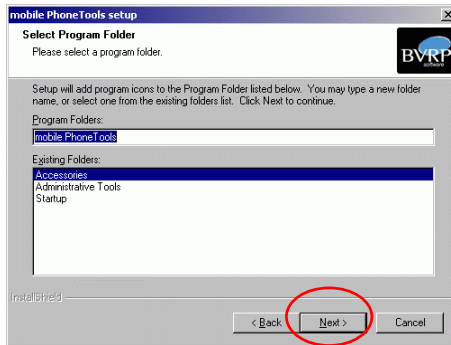
## 7. Click Next.



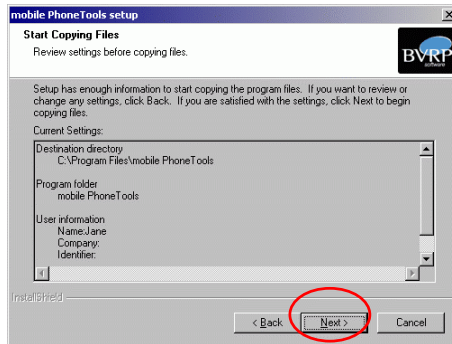
8. Click Next.



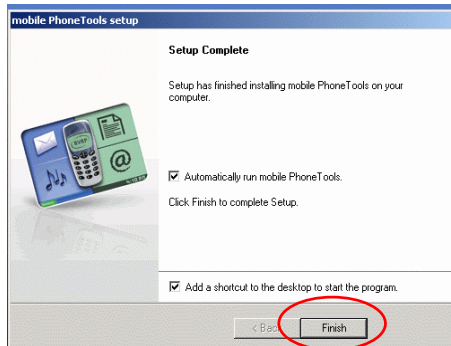
9. Click Next.



10. Click **Next**.

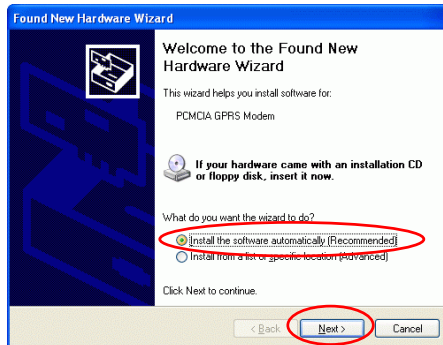


11. Click **Finish** to complete the setup

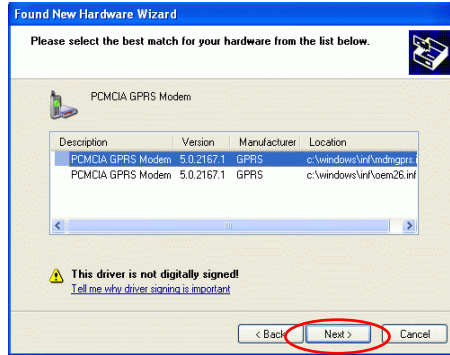


## For Windows XP

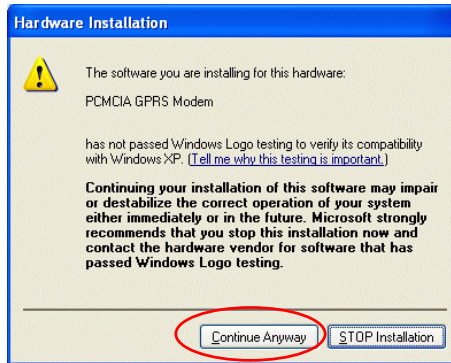
1. Select **Install the software automatically (recommended)**, and click **Next**.



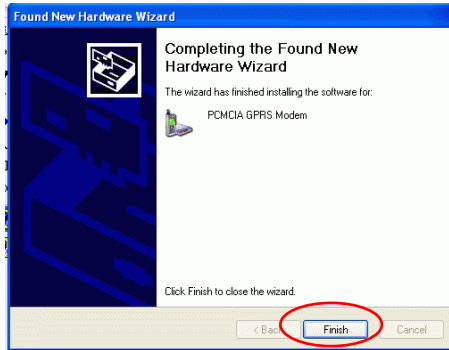
### 3. Click Next



### 4. Click Continue Anyway.



### 5. Click Finish.

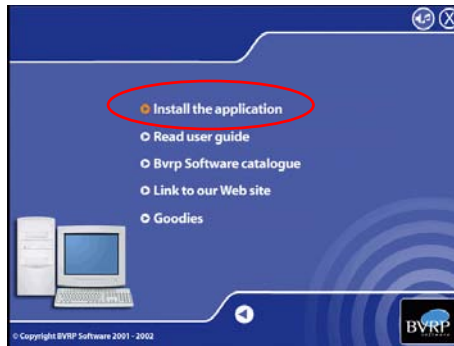


6. Select the language you need.



7. Select **Install the application.**

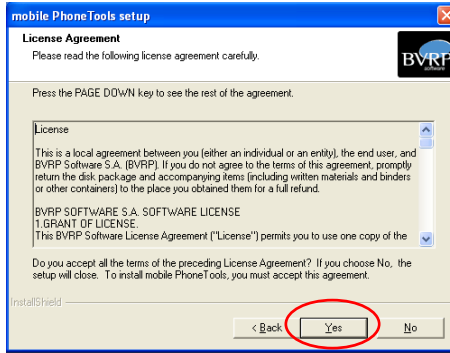




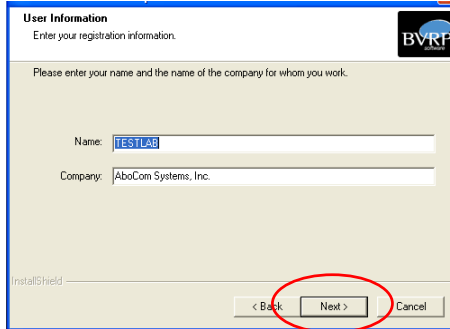
8. Click **Next**.



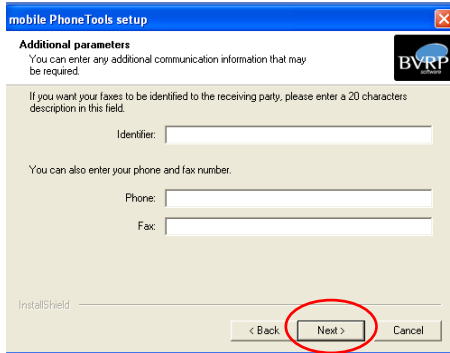
9. Click **Yes**.



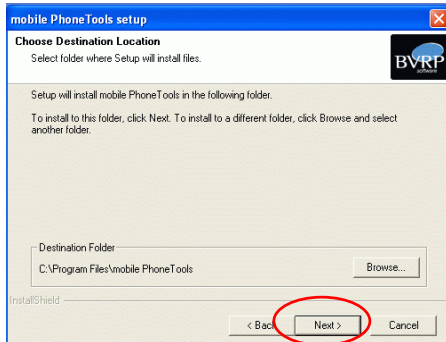
## 10. Click Next



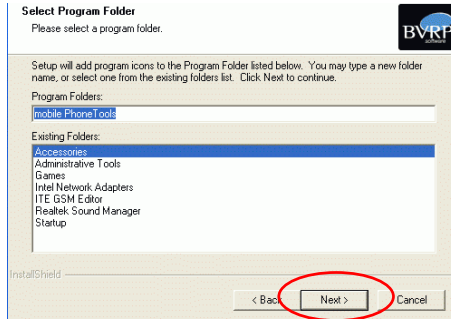
## 11. Click Next.



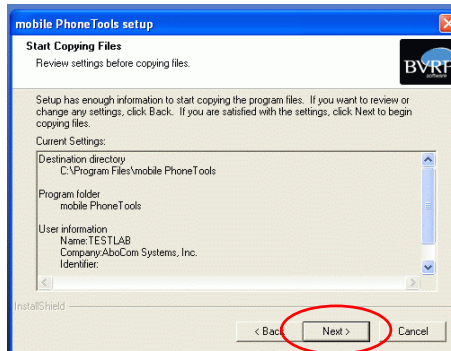
12. Click Next.



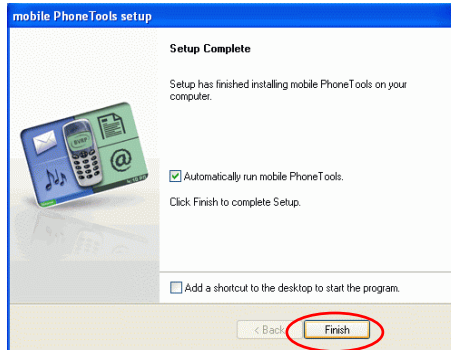
13. Click Next.



14. Click **Next**.



15. Click **Finish**.

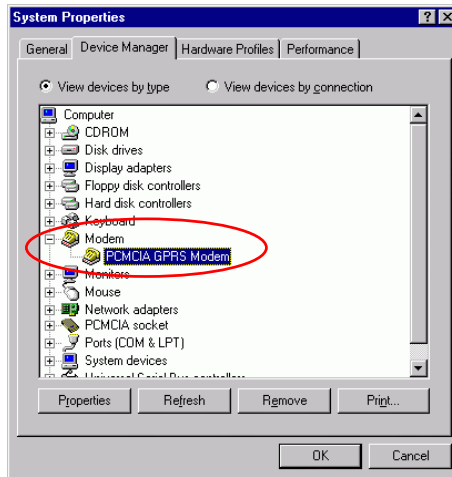


## Verify

To verify if the device exists in your computer and is enabled, go to **Start → Settings → Control Panel → System (→ Hardware) → Device Manager**.

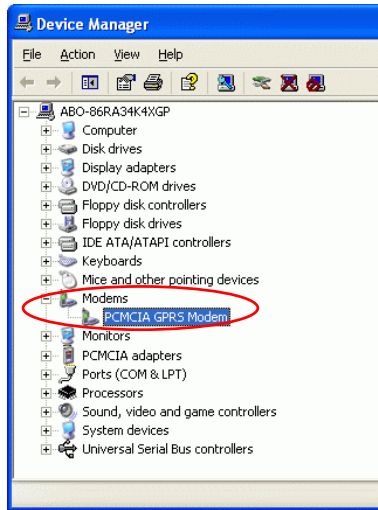
### For Windows 98/ME

Expand the **Modem** category. If the **PCMCIA GPRS Modem** is listed here, it means that your device is properly installed and enabled.



### For Windows 2000/XP

Expand the **Modem** category. If the **PCMCIA GPRS Modem** is listed here, it means that your device is properly installed and enabled.



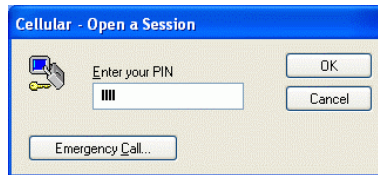
## Mobile PhoneTools

*Note :*

- The program does **NOT** support standby mode under GPRS connection.
- To prevent from any unexpected errors, do **NOT** eject the GPRS PC Card Modem before closing the Mobile PhoneTools window.

### Enter the PIN Number

If you have enabled the PIN function, the system may prompt you to enter your PIN. Enter the PIN number then click **OK**.





## Mobile PhoneTools Main Window

With mobile PhoneTools you can share the information contained in your cell phone with your computer. Once your cell phone is connected to your computer, the following operations can be easily processed: place and receive calls; send and receive faxes, e-mails, and SMS; launch a GPRS session.










You can adjust the volume by moving here



## Mobile PhoneTools Functions Panel



Icon	Description
	Click to launch or end the default <b>GPRS</b> connection.
	Click to open the <b>Send Message</b> window to write and send SMS messages.
	Click to open the Send E-mail window.
	Click to open the Send Fax window.

	Click to Open phonebook..
	Click to synchronize phonebook and SIM card memory
	Click to show communication information.

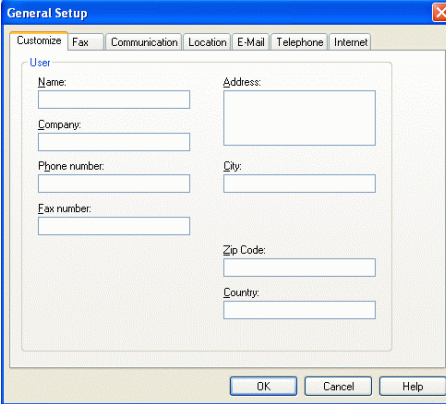
## Configure Mobile PhoneTools

Now that your system has been correctly installed, it is recommended that you configure your mobile PhoneTools.

### Access the General Configuration Window

1. In the mobile PhoneTools main window, you can either press **F6** on your keyboard or click the **Menu** button.
2. If you choose to click the **Menu** button, in the menu displayed, select **Setup** and then **General Setup**.

The General Configuration dialog box appears:



The screenshot shows the 'General Setup' dialog box. It has a blue title bar with the text 'General Setup' and a close button. Below the title bar is a tabbed interface with tabs for 'Customize', 'Fax', 'Communication', 'Location', 'E-Mail', 'Telephone', and 'Internet'. The 'User' tab is selected, and it contains a form with the following fields: 'Name', 'Address', 'Company', 'Phone number', 'City', 'Fax number', 'Zip Code', and 'Country'. At the bottom of the dialog are three buttons: 'OK', 'Cancel', and 'Help'.

3. Set the appropriate parameters in the various tabs:

- **Customize** : enter your personal data.
  - **Fax** To select your fax reception/transmission options.
  - **Communication** : set up your communication functions.
  - **Location** : set up the dialing properties.
  - **E-mail** : configure your e-mail accounts.
  - **Internet** : indicate whether you are using a LAN (through a local network) or a dial-up connection (with a modem).
4. Click **OK**.

## Main Phone Features

### Access the Inbox and the Outbox Windows

1. In the mobile PhoneTools main window, click the **Menu** button.
2. In the menu displayed:
  - Select **Send** then **Outbox** (or press **F3** on your keyboard).
  - Select **Reception** then **Inbox** (or press **F4** on your keyboard).

These windows also give you access to **Pending emails**, **Finished transmissions**, and **Failed transmissions** (SMS, e-mails, faxes).

### View Logbooks

1. In the mobile PhoneTools main window, click the **Menu** button.
2. In the menu displayed:
  - Select **Send** then **Logbook** (or press **F8** on your keyboard) to view **Transmission Log Book**.
  - Select **Reception** then **Logbook** (or press **F9** on your keyboard) to view **Reception logbook**.

### View Modem Exchange

1. In the mobile PhoneTools main window, press **F12** on your keyboard or click the **Menu** button.
2. If you choose to click the **Menu** button, in the menu displayed, select **Display** then

**Modem Exchange.** The Modem Exchange window displays the log files between the modem and mobile PhoneTools.





## GPRS Connection

GPRS stands for General Packet Radio Service. It is an extension of the GSM network that enables high speed packet mode transmission. GPRS works faster than the Data/Fax option and allows you to send and receive emails and surf the Internet at a faster rate. With the GPRS function, mobile PhoneTools allows you to immediately connect your computer to the Internet wherever you are (if the GPRS network is available).

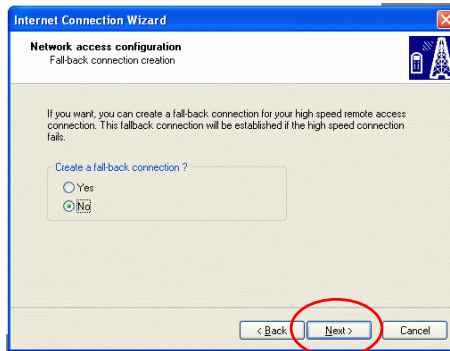
*Note: this function depends on your cell phone, your operator network and requires a GPRS subscription with your cell phone operator.*

### Configure GPRS Connection

1. In the mobile PhoneTools main window, click the GPRS icon from the side panel, or click the **Menu** button.
2. In the menu displayed, select **Setup** then **GPRS connections**. The GPRS Connections dialog box appears.
3. When The GPRS connection wizard opens. It will guide you through to configure your connection settings.
4. Click **Next**.



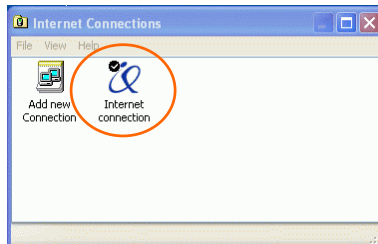
Select **No** and then click **Next**.



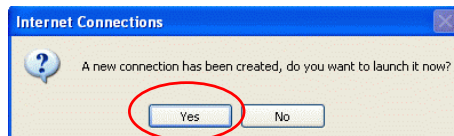
Click **Finish** to complete making the new connection.



5. Once finished, a new icon appears in the GPRS Connections dialog box as shown below:



6. If you want to launch the connection now, click **Yes**.

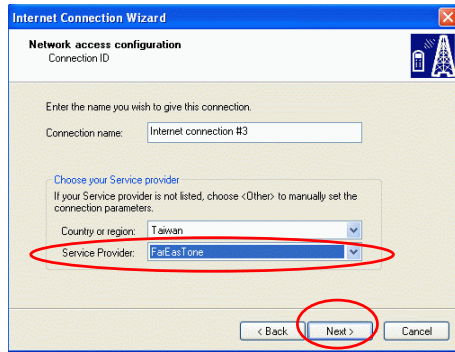


## Add another service provider

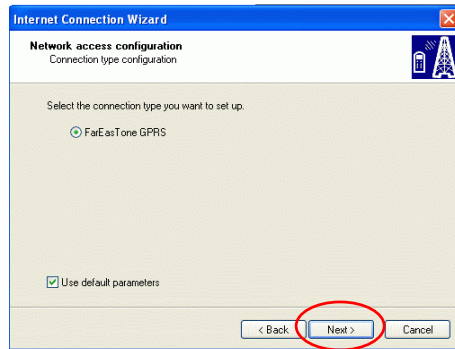
1. If you have another SIM card (another service provider) to establish GPRS connection, on the Mobile PhoneTools, click **Menu**→**Setup** → **Internet Connections** and then double-click the **Add new Connection** icon, the Internet Connection Wizard will appear, click **Next** to continue.



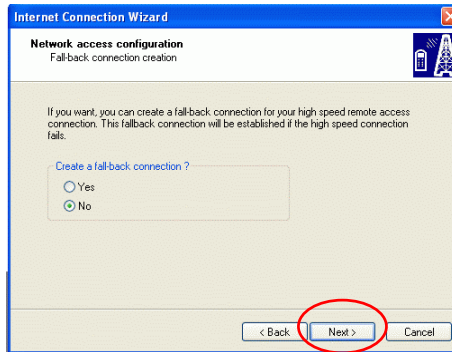
2. Select the Service provider from the pull-down list and then click **Next**.



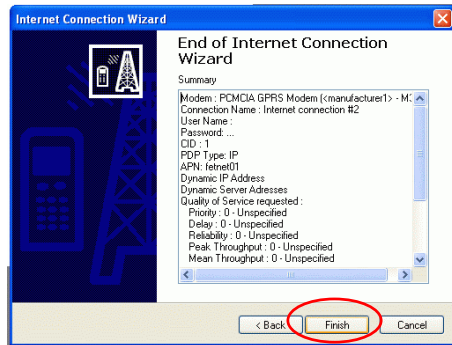
3. Click **Next**.



4. Click **Next**.



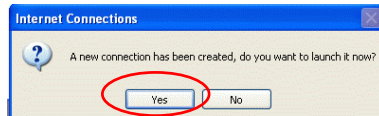
5. Click **Finish** to complete.



6. After finishing the setup steps, the service provider icon will appear in the Internet Connection window.



7. If you want to launch the new connection you just established, click **Yes**.




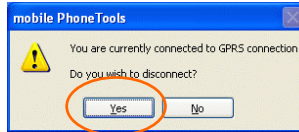
### Launch a GPRS Connection

1. In the mobile PhoneTools main window, click the GPRS icon from the side panel, or click the **Menu** button → **Setup** → **Internet connection** and then double-click the connection icon to launch.

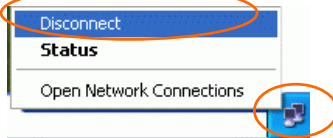
### Disconnect a GPRS Connection

There are two ways to disconnect the GPRS.

1. In the mobile PhoneTools main window,  
click the GPRS icon  from the side  
panel. Click **Yes** to disconnect GPRS.



2. Double-click the connection icon on the  
taskbar then click **Disconnect**.







With mobile PhoneTools you can read, send, reply, and transfer short messages to various recipients simultaneously. Your messages are automatically retrieved when you connect.

**Note:** You can send SMS messages that exceed 160 characters. mobile PhoneTools splits a message that exceeds 160 characters into several messages and links them together. To do this, you must have configured mobile PhoneTools.

## Access the Inbox/Outbox Window and View Messages

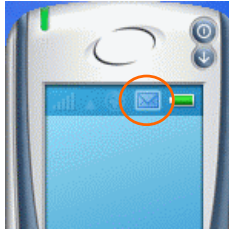
### Access the Inbox/Outbox

You have three choices to access the Inbox/Outbox:

1. In the mobile PhoneTools main window, click the **Menu** button. In the menu displayed:
  - To open the Outbox window, select **Send** then **Outbox**.
  - To open the Inbox window, select **Reception** then **Inbox**.
2. In the mobile PhoneTools main window,

click the SMS icon  from the side panel

3. Double-click the icon on the main window to open it.





### View the Inbox/Outbox

1. Click the message to be viewed in detail. The selected message is highlighted and its contents displayed in the detail view.
2. Double-click the message to open it in a new window.

### Create and Send an SMS

1. In the mobile PhoneTools main window, click the SMS icon on the side panel, or click the **Menu** button.
2. In the menu displayed, select **Send** then **Send SMS**. The Send message dialog box appears:



Item	Description
Name/Number	Enter your recipient details.
Deferred call	Click here if you want to postpone the transmission of your SMS.
Message	Type your message here.
Send	To send a message, click <b>Send</b> .
Options	Click here to edit Options. Those defined here will have priority over those specified in your cellular.
Import	Click here if you want to Import a file to send as an SMS.
Callback number	Check here if you want to modify the recall number and type new number below.
High Priority	Check here if you wish the recipient to receive your SMS directly is his cell phone display.
	Check the number of characters and messages when creating a long SMS.
	Click here to locate and select a template for your SMS.

## Reply to a Received SMS

1. To check for incoming SMS, from the mobile PhoneTools main window, open the Inbox dialog by pressing **F4** on your keyboard. Received messages are automatically downloaded to the Inbox.
2. Select the message you want to reply to and click on it.
3. Click the **Reply** icon . The Send message dialog box appears with the recipient fields filled in.
4. Type your message in the **Message** field and select the appropriate options where needed.
5. Click **Send**.

## Transfer a Received SMS As an SMS, Fax or E-mail

1. From the mobile PhoneTools main window, open the Inbox dialog box by pressing **F4** on your keyboard.
2. Select the SMS message you want to transfer and right-click on it. A menu appears.
3. Scroll to the **Forward** option. A sub-menu appears.
4. Scroll to one of the following options:

- **By SMS** to have it transferred as an SMS. The Send message dialog box appears including the text of the SMS.
- **By Fax** to have it transferred as a fax. The Send Fax dialog box appears with the text copied in the **Message text** area.
- **By E-mail** to have it transferred as an e-mail. The Send e-mail dialog box appears including the text of the SMS.

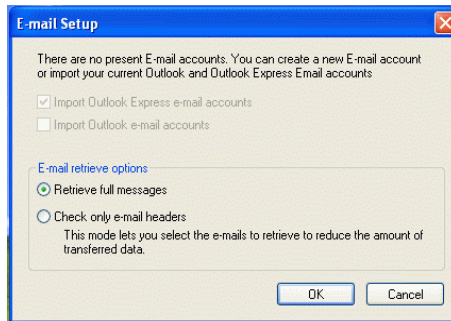


With mobile PhoneTools you can either send or receive e-mail messages. To do so, the Data/fax option must be included in the subscription contract with your cell phone operator.

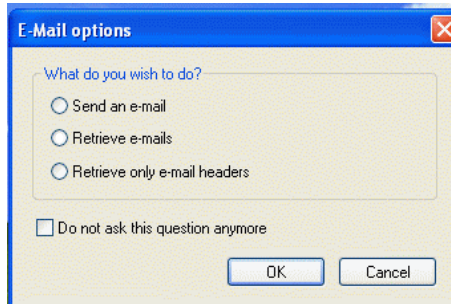
Mobile PhoneTools lets you manage multiple email accounts.

### Configure Your E-mail Accounts

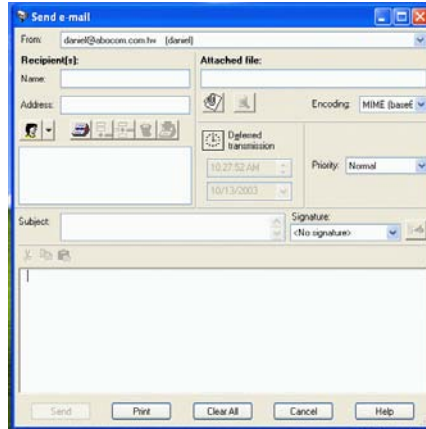
1. In the mobile PhoneTools main window, press **F6** on your keyboard (or click the e-mail icon from the side panel). The General Configuration dialog box appears.
2. When the first time you click to send e-mail, the following figure will appear for you to set up your e-mail account, click **OK**.



3. After finishing e-mail account setting, click the e-mail button on the Mobile PhoneTools, the following figure will appear for you choose

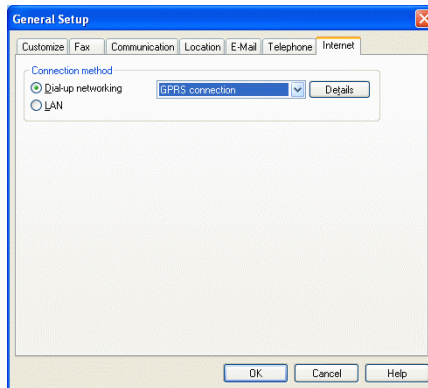


4. If you choose **Send an e-mail**, the following figure will appear for you to configure.



Item	Description
<b>Add</b>	Click <b>Add</b> and enter an e-mail account name. You can add several accounts. The one highlighted in bold is the <b>Sending Account</b> .
<b>Advanced Setup</b>	Click here to configure additional options such as being notified when receiving e-mail.
<b>Reception</b> POP Server / POP Account / Password / Mailbox	These fields must be filled in to enable your ISP server to identify your account. Please refer to the information provided by your ISP.
<b>Transmission</b> SMTP Server / Return Address	This field is mandatory. Please refer to the information provided by your ISP.
Real name	The real name is the name that will appear in your correspondents' message list.

- To select the Internet connection mode, click on the **Internet** tab. You can then choose Dial-up networking, or LAN as your Internet connection method.






4. When finished, click **OK** to close the window. You are now ready to send and receive E-mail messages.

**Note:** for each e-mail account you create, you need to fill in the **Incoming** and **Outgoing** group boxes. You will find the necessary information in the subscription contract with your Internet Service Provider (ISP). If you are using a local network connection, contact your company's network administrator.

### Send an E-mail

There are two ways to send e-mail:

1. In the mobile PhoneTools main window, click the **Menu** button. In the menu displayed, select **Send** then **Send E-Mail**.
2. Click  icon from the side panel.

### Check for Incoming E-mails

1. Click the **Menu** button in the mobile PhoneTools main window.
2. In the menu displayed, select **Reception>E-mail reception**. The mail received is automatically placed in the **Inbox** folder of the tree view (accessible by pressing **F4** on your keyboard).

## Transfer a Received E-mail As an SMS, Fax or E-mail

1. From the mobile PhoneTools main window, open the Inbox dialog box by pressing **F4** on your keyboard.
2. Select the e-mail message you want to transfer and right-click on it. A menu appears.
3. Scroll to the **Forward** option. A sub-menu appears.
4. Scroll to one of the following options:
  - **By Fax** to have it transferred as a fax. The Send Fax dialog box appears with the text of the e-mail copied in the cover page.
  - **By E-mail** to have it transferred as e-mail. The Send e-mail dialog box appears including the text of the e-mail.
  - **By SMS** to have it transferred as an SMS. The Send message dialog box appears including the e-mail text.

*Note: your SMS messages can exceed 160 characters. mobile PhoneTools splits a message that exceeds 160 characters into several messages and links them together.*

## Configure Automatic Reception

1. In the **E-Mail** tab from the General Setup dialog box (**F6** keyboard key), click **Advanced Setup**.
2. Click the **General** tab, and in the **Reception** group box, check **Check for new messages every (n) minutes** and enter a number for **n**.
3. Click **OK** to close windows.



Mobile PhoneTools enables you to send and receive faxes. To do so, the Data/fax option must be included in the subscription contract with your cell phone operator.

### Fax configuration options

4. In the mobile PhoneTools main window, press **F6** on your keyboard (or click the fax icon from the side panel). The General Setup dialog box appears.
5. Click the **Fax** tab. From this screen you can edit the default values of mobile PhoneTools fax functions:
  - **Identifier**: type in a name that will be used to “ sign ” documents sent as faxes by the system. Some hardware systems accept alphanumeric characters, others accept only digits; the entry for this line is adapted accordingly.
  - **Include cover page**: check the box to activate the fax transmission with a cover page.
  - **Apply outgoing header**: check the box to add an information line containing the sender’s name, recipient’s name, date and time of transmission as well as the current page number and the total number of document pages to the heading of each page.
  - **High quality fax transmission**: check the box to have all faxes sent in fine mode (200 points per vertical inch).

- **Print outgoing faxes:** check the box to have all sent faxes automatically printed (when mobile PhoneTools is opened).
- **Print received faxes:** check the box to have all received faxes automatically printed (when mobile PhoneTools is opened).
- **Do not clear recipients list between transmissions:** check the box to save the list from one transmission to the next.
- **Show fax wizard:** check the box to activate the fax wizard whenever you create a fax.

### To send a fax

6. In the mobile PhoneTools main window, click the **Menu** button.
7. In the menu displayed, select **Send** then **Send Fax**. The Send Fax dialog box appears:

**Note:** by default, the fax wizard displays and guides you through the preparation of your fax. If you have deactivated the **Show fax wizard** option, then the **Send Fax** window opens.

**Send Fax Wizard: Recipient Information**

Please enter the recipient's information. You can enter several recipients by filling out the information and clicking on the 'Add' button. Once you have finished adding recipients, click on Next.

Name:

Company:

Recipient Fax #:  Add

Recipients list:

Name	Company	Number

Check here to bypass this wizard and go directly to the send fax window

< Back   Next >   Cancel

**Send Fax**

**Recipient(s):**

Name:

Company:

Fax:  Add

Recipients list:

Name	Company	Number

**Attached document**

**Deferred call**

Date/Time

8:53:40 AM

3/26/2003

**Options**

Cover page mode




**Cover Page**

Message text:

Template: Standard

Send   Preview   Clear All   Cancel   Help

Item	Description
Name/ Company/ Fax	Enter your recipient details or click the PhoneBook icon to select it. Then click <b>Add</b> .
Message text	Type the cover page text here. This Cover Page data entry field appears only when the <b>Include</b>

	<b>cover page</b> option is checked in the <b>General Setup &gt; Fax</b> tab.
Send	Click <b>Send</b> to send the fax.
Preview	Click <b>Preview</b> to view your fax.
Template	Choose templates here. The chosen template will be automatically applied to the fax you are preparing.
Options	
 	Click <b>Cover page</b> to include a cover page. Click <b>HQ mode</b> to send the fax in high-resolution mode.
	Click here to access the Logo management.

## To receive a fax

Faxes sent to you are automatically received by mobile PhoneTools. They are placed in the **Inbox** folder (accessible by pressing **F4** on your keyboard).

However, for fax reception to be possible, mobile PhoneTools must be opened.

### To transfer a received fax as a fax or e-mail

8. From the mobile PhoneTools main window, open the Inbox dialog box by pressing **F4** on your keyboard.
9. Select the fax you want to transfer and right-click on it. A menu appears.
10. Scroll to the **Forward** option. A sub-menu appears.
11. Scroll to one of the following options:

- **By Fax** to have it transferred as a fax. The Send Fax dialog box appears with the fax included as an attached file.
- **By E-mail** to have it transferred as e-mail. The Send e-mail dialog box appears including the fax as an attached file.

### To use the fax wizard

The fax wizard automatically activates and helps you prepare and send faxes.

To do this, simply follow the instructions displayed on the screen.

### To receive a fax

Faxes sent to you are automatically received by mobile PhoneTools. They are placed in the **Inbox** folder (accessible by pressing **F4** on your keyboard).

However, for fax reception to be possible, mobile PhoneTools must be opened.

### To transfer a received fax as a fax or e-mail

12. From the mobile PhoneTools main window, open the Inbox dialog box by pressing **F4** on your keyboard.
13. Select the fax you want to transfer and right-click on it. A menu appears.

14. Scroll to the **Forward** option. A sub-menu appears.
15. Scroll to one of the following options:
  - **By Fax** to have it transferred as a fax. The Send Fax dialog box appears with the fax included as an attached file.
  - **By E-mail** to have it transferred as e-mail. The Send e-mail dialog box appears including the fax as an attached file.

### To use the fax wizard

The fax wizard automatically activates and helps you prepare and send faxes.

To do this, simply follow the instructions displayed on the screen.

To activate the fax wizard by default:

16. In mobile PhoneTools main window, click the **Menu** button, then select **Setup>General Setup**.
17. Click the **Fax** tab and check the **Show fax wizard** box.
18. Click **OK**.

To deactivate the fax wizard:

19. In the main window of mobile PhoneTools, click the **Menu** button, then select **Setup>General Setup**.
20. Click the **Fax** tab, uncheck the **Show fax wizard** box and click **OK**; or directly from



the Send Fax wizard dialog box, check the box **check here to bypass this wizard and go directly to the send fax window**, then click **Finish**. The Send fax dialog box opens.

### To receive a fax from a server

21. In the mobile PhoneTools main window, click the **Menu** button.
22. In the menu displayed, select **Reception**, then **Automatic reception**. The Automatic dialog box opens.
23. Type in the server number from which you want to receive a fax.
24. Click **OK**. The received fax is placed in the **Inbox** dialog box (accessible by pressing **F4** on your keyboard).



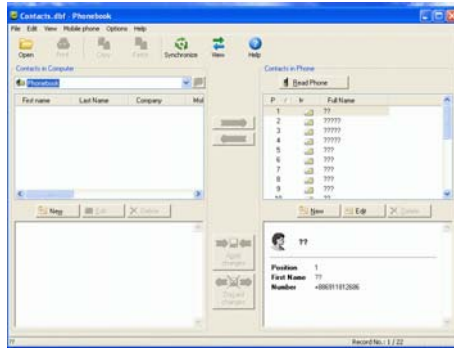
Mobile PhoneTools enables you to:

- Manage your mobile PhoneTools, MS Outlook, or MS Outlook Express phonebooks (import/export phonebooks; create, edit, delete entries...).
- Download your cell phone entries and synchronize them with those of your mobile PhoneTools phonebook, with the possibility to restore them at any time.

### Open the Default PhoneBook

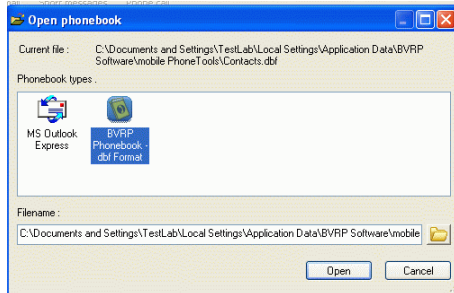
1. In the mobile PhoneTools main window, you can either press **F5** on your keyboard or click the **Menu** button.
2. If you choose to click the **Menu** button, in the menu displayed, select **Phonebook** and then **General Phonebook**.

The Phonebook dialog box appears:



## Open a Phonebook

1. In the mobile PhoneTools main window, press **F5** on your keyboard. The default Phonebook dialog box appears.
2. From the **File** menu, select **Open**. The Open Phonebook dialog appears.
3. Select the phonebook you want to open and click **Open**.



**Note:** the last opened phonebook becomes the default (It will be automatically opened whenever you access the phonebook).

### Create a Phonebook

1. In the mobile PhoneTools main window, press **F5** on your keyboard. The default Phonebook dialog box appears.
2. From the **File** menu, select **New**. The New Phonebook dialog box appears.
3. Navigate to the drive and folder where you wish to place the phonebook.
4. Type a name for the new phonebook.
5. Select a format and type a description.
6. Click **Save**.

The new phonebook appears in the **Group list** tree view. You can now add entries.

### Import/Export a Phonebook

- Open the phonebook and from the **File** menu, select **Export** or **Import**. A wizard displays to guide you through the export or import steps. Refer to the written instructions as they show up and to the related online help for detailed information.

### Add an Entry

1. Open the phonebook where you want to create an entry and click the **New** button.
2. In the tabs (**Identification**, **Business**, **Home**, **Notes**), click in the data entry fields and fill out at least one of the following

fields: **Last name**, **First name**, or **Company**.

3. Click **Save**.

### Edit an Antry

1. Open the phonebook and highlight the entry you want to edit.
2. In the lower part of the window, select the tab (**Identification**, **Business**, **Home**, **Notes**) where you wish to make the modification.
3. Click in the field you want to edit and make the necessary modifications.  
Click **Save**.

### Delete an Entry

1. Open the phonebook and highlight the entry you want to delete.
2. Click the **Delete** button. A popup window prompts you to confirm deletion.
3. Click **YES**.

## SPECIFICATIONS

Host Interface	PC Card TypeII slot
Antenna	Internal Tri-band Antenna
LED Indicators	<ul style="list-style-type: none"> <li>▪ LINK: POWER ON</li> <li>▪ ACT:           LINK       BASE STATION</li> </ul>
Frequency Band	<ul style="list-style-type: none"> <li>▪ EGSM Tx : 880 ~ 915MHz</li> <li>▪ EGSM Rx:  925 ~ 960MHz</li> <li>▪ DCS Tx:  1710 ~ 1785 MHz</li> <li>▪ DCS Rx:  1805 ~ 1880MHz</li> <li>▪ PCS Tx:   1850 ~ 1910MHz</li> <li>▪ PCS Rx:   1930 ~ 1990MHz</li> </ul>
Operation mode	GPRS multi-slot class 10 mode (up to 4 download channels and 2 upload channels)
Coding Scheme	Supports all coding schemes(1,2,3 and 4)
Device Class	GPRS mobile station class B
SIM Interface	SIM card Holder: Type 3V
Transmission Power	<ul style="list-style-type: none"> <li>▪ Class 4(2W) for GSM900</li> <li>▪ Class 1(1W) for GSM1800 and GSM1900</li> </ul>
Receiver Sensitivity @ARP BER <2.4%	-102dBm

Data Rate	<ul style="list-style-type: none"> <li>▪ GPRS data downlink transfer: 85.6 kbps(Max.)</li> <li>▪ GPRS data uplink transfer: 21.4 kbps(Max.)</li> <li>▪ SMS: Over CSD or GPRS connections</li> </ul>
Power Consumption	<p>Operating Voltage: 4.75V~5.25V</p> <ul style="list-style-type: none"> <li>▪ Active mode: 600 mA(Max.)</li> <li>▪ Idle mode: 40 mA(Typical)</li> </ul>
Physical Specifications	<ul style="list-style-type: none"> <li>▪ Weight: 50g</li> <li>▪ Dimension: 125.81 (L) x 54.05 (W) x 11.46 (H) mm</li> </ul>
Environment Specifications	<ul style="list-style-type: none"> <li>▪ Storage Temperature: -20~70 °C ambient temperature</li> <li>▪ Storage humidity: 90% maximum (non-condensing)</li> </ul>
Supported OS	Windows 98/ME/2000/XP/PocketPC 2002