

WL-2000CAM

IR Wireless-G Multi-Profile IP Camera

The WL-2000CAM is an IP camera designed for high-level video imaging experience that generates MPEG-4 and M-JPEG streaming. With auto light sensor, its automatic night mode offers superior low light performance. It offers support for UPnP which makes seamless device connection and easy installation.

Auto
Sensor
LED

2-Way
Audio

3GPP

RTSP

UPnP

Motion
Detection

Dual
Stream

802.11g



Full Function Wireless Camera

AirLive Wireless IP Cameras are designed for Home or Enterprise customers who demand performance with the latest technologies for mobility and functionality. It features simple plug-and-play installation and easy wireless operation that allows it to be placed anywhere effortlessly. The web-based configuration allows viewing the image from the Internet and various security functions such as video recording to a TFTP server. The 802.11g standard allows the camera to operate at 30 FPS and up to 640x480 VGA resolution. The 802.11g models add WPA support for even more secure data encryption.

Motion JPEG & MPEG-4 Compression Format

The WL-2000CAM is an advanced wireless IP camera with Motion JPEG and MPEG-4 capabilities. Using infrared illumination, Motion JPEG and MPEG-4 dual output stream allows for good compression performance with low bit rates and bandwidth requirements.

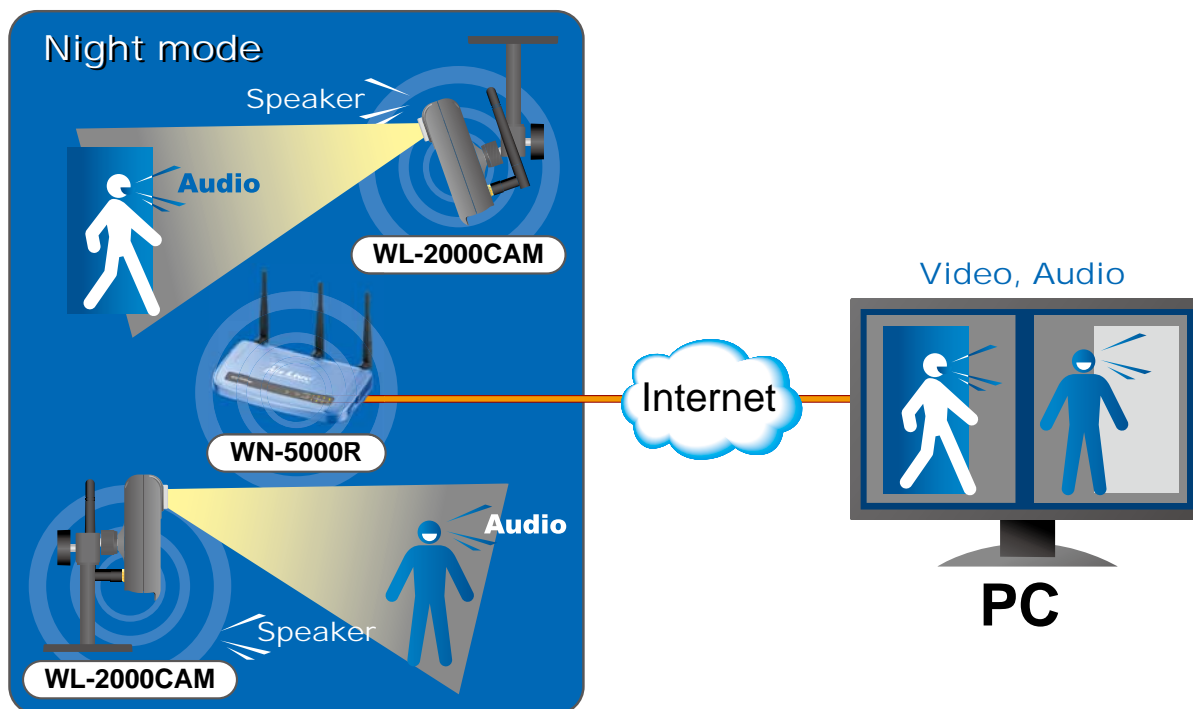
Versatile Application

This auto light sensor IP camera comes equipped with many advanced features suitable for all types of applications. The camera supports FTP, TCP/IP, SMTP, HTTP and many other Internet-related protocols for remote surveillance. Motion detection with up to three sensors enables optimal performance of video detection by capturing images and sending those images for e-mail notification. With built-in auto-sensor LEDs that allow viewing objects in the dark, the WL-2000CAM constantly delivers superior image detail in any environment.



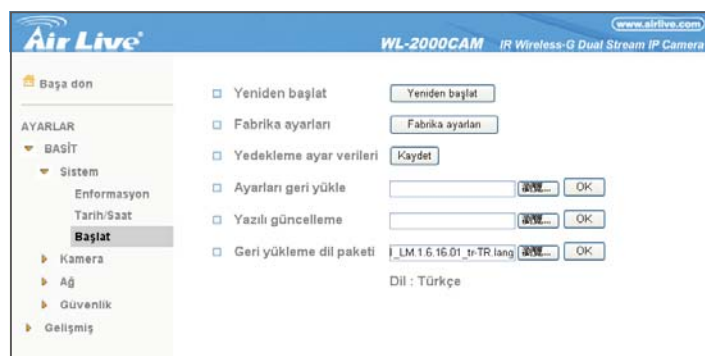
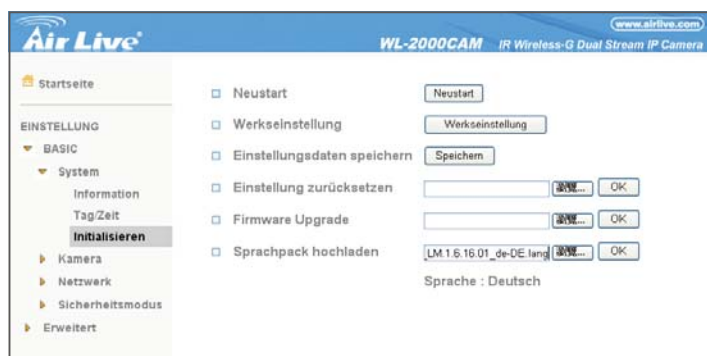
2-Way Audio Communication

The WL-2000CAM supports 2-way audio with use of the built-in microphone and separate computer speakers which allows for real-time voice communication between the camera and PC.



Language Pack Feature

This camera also comes with upgradeable device language pack offering seven different languages for user-friendly operation. These languages include Chinese, German, Spanish, Japanese, and more.



View from Mobile Phone

The RSTP protocol feature allows 3G and 2.5G mobile phones to display captured images from the camera for live video surveillance from a remote location. With infrared technology that eliminates bit rate problems caused by poor night time performance, WL-2000CAM is the perfect answer to remotely monitoring your house while out traveling.



Professional Surveillance Software Supported

WL-2000CAM also supports CamPro Express, the bundle surveillance software that lets user to view and record multiple live images at the same time. Using several WL-2000CAMs with CamPro Express, user can easily build up a surveillance system at different environment. Moreover, WL-2000CAM also supports CamPro Professional, which is AirLive's intelligent video surveillance recording software. It is designed to meet most demands for professional installations. With its video analysis functions, such as tempering detection, user can build up a stable and efficient surveillance system.

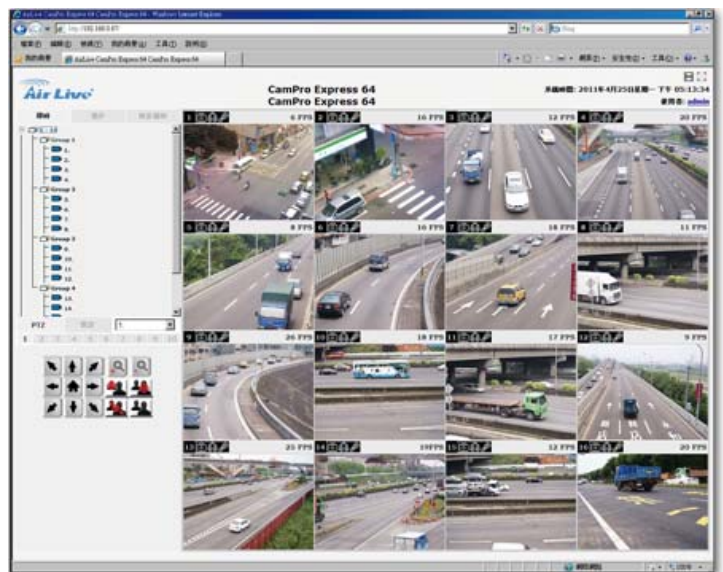


APPS for Android and iOS

AirLive has worked with IPCAM Viewer developer to add support for AirLive IPCAM. So you can view multiple AirLive cameras using Android device, iPhone, or iPad. For more information about Android or iOS apps, please visit the FAQ page.

Web Monitor

The CamPro Express allows you to monitor 64 channels via the computer and WEB UI. You can also choose to view the different camera in single view or 1/4/9/16/32/64 view.



Specifications

Models

- AirLive WL-2000CAM

Image Sensor

- 1/4" Progressive CMOS Sensor

Zoom

- 10x Digital

Minimum Illumination

- 0 Lux at F2.0 with Night-vision LEDs on

Video Compression

- Motion JPEG & MPEG-4

Max Resolution

- 640 x 480(VGA)

Frame Rate

- Motion JPEG: Up to 30 fps in all resolutions
- MPEG-4: Up to 30 fps in all resolutions

Video Streaming

- Simultaneous Motion JPEG and MPEG-4
- Controllable frame rate and bandwidth 3GPP/ISMA RTSP compatible

Audio

- Two-way(full duplex) Built-in microphone

Alarm and Event Management

- Built-in multi-window motion detection Image upload over FTP, e-mail and HTTP Notification over TCP and e-mail

Connectors

- Ethernet RJ-45, audio line out

Processors and Memory

- ARM9 based 32-bit RISC CPU 32MB RAM, 4MB Flash

Operation System

- Linux 2.4

Power

- 5V DC,max 4.5 W

Operating Conditions

- 0-45 °C (32-113 °F) Humidity 20-80% RH(non-condensing)

Minimum System Requirements

- Pentium III CPU 500 MHz or higher, or equivalent AMD 128MB RAM Windows 98,ME,2000,XP,Vista Internet Explorer 6 or later

Supported Protocols

- TCP/IP, DHCP, PPPoE, ARP, ICMP, FTP, SMTP, DNS, NTP, UPnP, RTSP, RTP, HTTP, TCP, UDP, 3GPP/ISMA RTSP

Video Surveillance Software

- Professional surveillance application for viewing, recording and archiving up to 16 cameras

Approvals

- CE,FCC,RoHS

Dimensions

- 104 x 63 x 35mm

Ordering Information:

AirLive WL-2000CAM IR Wireless-G Multi-Profile IP Camera