

WL-2600CAM

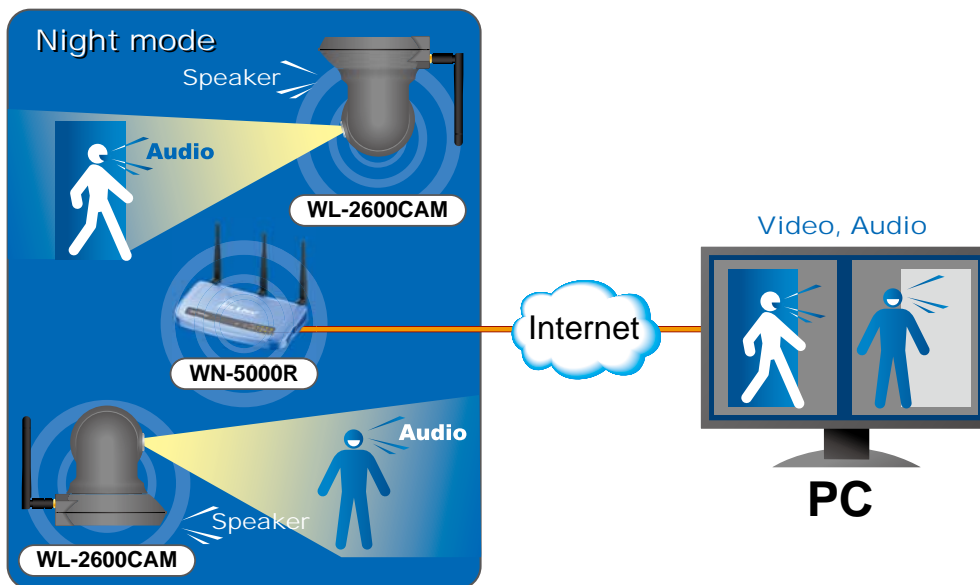
Wireless Pan-Tilt Night Vision IP Camera

The WL-2600CAM is an advanced wireless IP camera with Pan and Tilt function. You can set a particular patrol area; it will then move its lens in both horizontal and vertical direction continuously to scan the area. Or you can remote control the camera to look in the desirable direction.



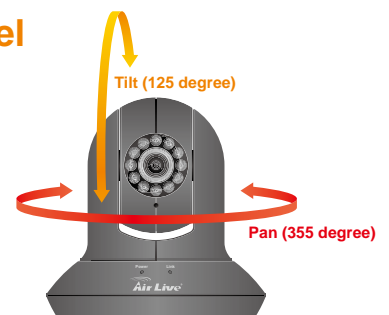
Wireless Pan-Tilt Night Vision IP Camera

The WL-2600CAM is the world's 1st Pan/Tilt CMOS IP Camera equipped with an automatic removable mechanical IR-cut filter and 12 high power Infrared LEDs enabling it to cover video footage not only from any angle, but also under any lighting condition.



Mechanical IR-cut filter makes your Quality goes higher level

The WL-2600CAM supports simultaneous dual-streaming of MPEG-4 and Motion JPEG (MJPEG) to provide both high quality and bandwidth efficient compression formats. MJPEG delivers greater file integrity, making it ideal for detailed monitoring situations. MPEG-4 video has smaller file sizes, making it more useful for extended recording periods or for use in low bandwidth networks.



Manufacturer

OvisLink Corp.

5F, No.96, Min-Chuan Rd., Hsin-Tien Dist., New Taipei City 231, TAIWAN

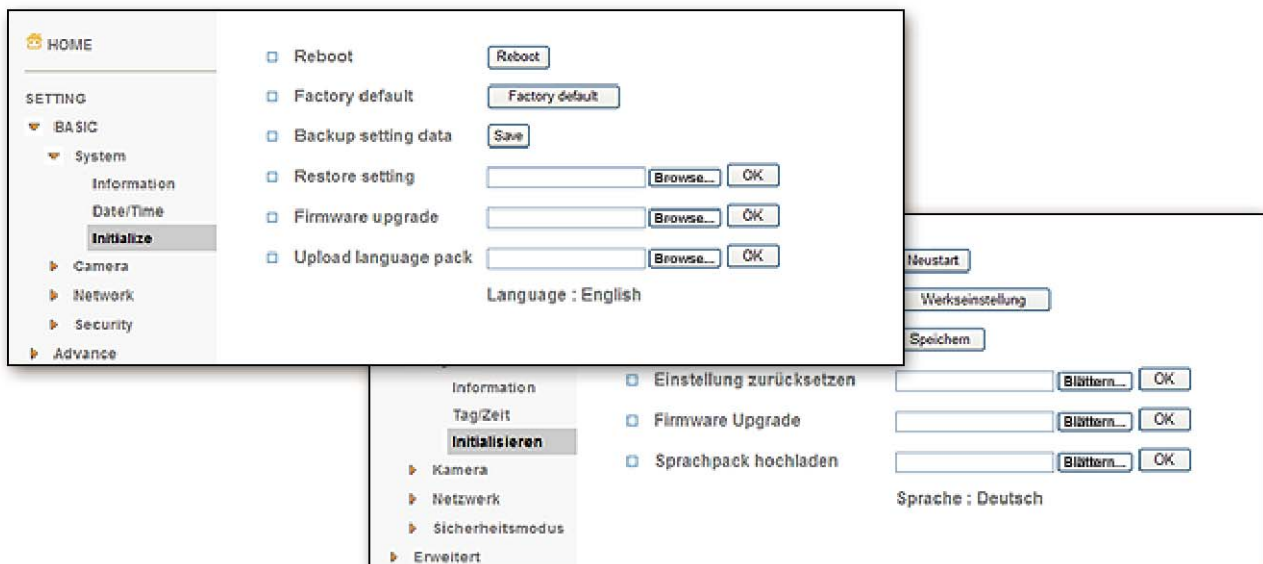
www.airlive.com

Video Quality

The WL-2600CAM supports simultaneous dual-streaming of MPEG-4 and Motion JPEG (MJPEG) to provide both high quality and bandwidth efficient compression formats. MJPEG delivers greater file integrity, making it ideal for detailed monitoring situations. MPEG-4 video has smaller file sizes, making it more useful for extended recording periods or for use in low bandwidth networks.

Language Pack Feature

This camera also comes with upgradeable device language pack offering seven different languages for user-friendly operation. The language pack support 14 languages now and still updating. These languages include Chinese, German, Spanish, Russia, Cestina, Portuges, and more.



View from Mobile Phone

The RTSP protocol feature allows 3G and 2.5G mobile phones to display captured images from the camera for live video surveillance from a remote location. With automatic light adjustment that eliminates bit rate problems caused by poor night time performance, WL-2600CAM is the perfect answer to remotely monitoring your house while out traveling.

- * The mobile device must be Internet-ready. Support Real Time Streaming Protocol (RTSP) and be equipped with a 3G video player such as PacketVideo™, Quicktime™, or RealPlayer™, and have Internet access.
- * A PoE Switch or router is required to provide power via the Ethernet connection.
- * Use of video equipment for recording the image of a person without their knowledge and consent is prohibited in certain states or jurisdictions. The end-user assumes all liability for compliance with applicable state, local, and federal laws.

Professional Surveillance Software Supported

WL-2600CAM also supports CamPro Express, the bundle surveillance software that lets user to view and record multiple live images at the same time. Using several WL-2600CAMs with CamPro Express, user can easily build up a surveillance system at different environment. Moreover, WL-2600CAM also supports CamPro Professional, which is AirLive's intelligent video surveillance recording software. It is designed to meet most demands for professional installations. With its video analysis functions, such as tempering detection, user can build up a stable and efficient surveillance system.

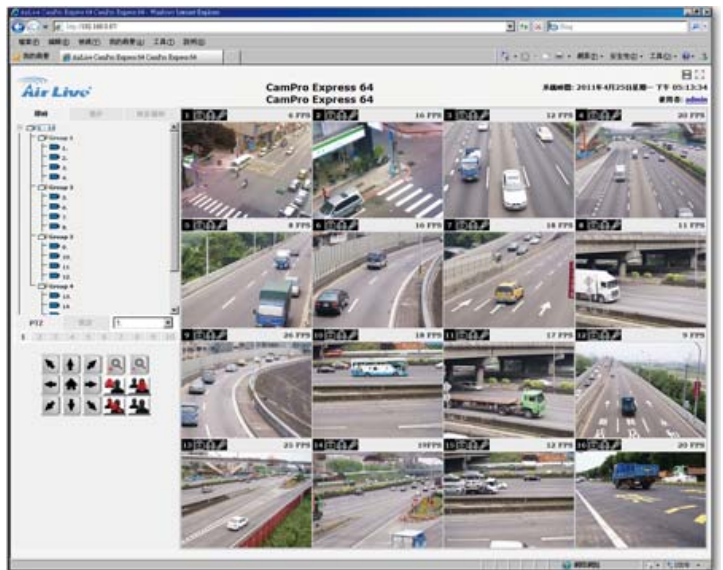


APPS for Android and iOS

AirLive has worked with IPCAM Viewer developer to add support for AirLive IPCAM. So you can view multiple AirLive cameras using Android device, iPhone, or iPad. For more information about Android or iOS apps, please visit the FAQ page.

Web Monitor

The CamPro Express allows you to monitor 64 channels via the computer and WEB UI. You can also choose to view the different camera in single view or 1/4/9/16/32/64 view.



Hardware Specification

Image Sensor

- 1/4" Progressive scan CMOS sensor

Lens

- 4.0mm, F2.0

Zoom

- 10x Digital

Minimum Illumination

- 0 Lux with IR LED on

Infrared Filter

- Automatic removable Infrared-cut filter

Infrared LED

- 12 pcs (850nm)

Infrared Working Distance

- 10m (33 feet)

Video Compression

- Motion JPEG
- MPEG-4

Max Resolution

- 640 x 480 (VGA)

Frame Rate

- Motion JPEG: Up to 30 fps in all resolutions
- MPEG-4: Up to 30 fps in all resolutions

Video Streaming

- Simultaneous MPEG-4 and Motion JPEG
- Controllable frame rate and bandwidth
- Supports 3GPP/ISMA RTSP
- Supports Unicast & Multicast

Audio

- Two-way (full duplex)
- Built-in microphone
- 3.5mm jack for Mic/Line in
- 3.5mm jack for Line out

Wireless

- IEEE 802.11b/g

Alarm and Event Management

- Built-in multi-window motion detection
- External input x 1 / output x 1 for alarm or sensor
- Triggered and scheduled events
- Pre- and post-alarm buffer
- Image upload over FTP, e-mail and HTTP
- Notification over TCP and e-mail

Security

- ID and password authentication
- HTTPS encryption (SSL V3.0)

Connectors

- RJ-45 for Ethernet 10BaseT/100BaseTX
- DC 12V power jack
- 3.5mm jack for Mic/Line in
- 3.5mm jack for Line out
- Terminal blocks for 1 alarm input, 1 output

Viewing Angle

- 48°27' (H)
- 37°17' (V)
- 58°42' (D)

Ordering Information:

AirLive WL-2600CAM Wireless Pan-Tilt Night Vision IP Camera