

## WL-350HD

### Auto Light Sensor Wireless-G MegaPixel IP Camera

**S**till couldn't find a way to watch your children or the elders when you are in busy or on duty? Or just need an easy solution for monitoring your office, store or garage? WL-350HD, with its compact size and wireless network technology, moves the "surveillance" from a complex task to a simply "Plug and Play" job.

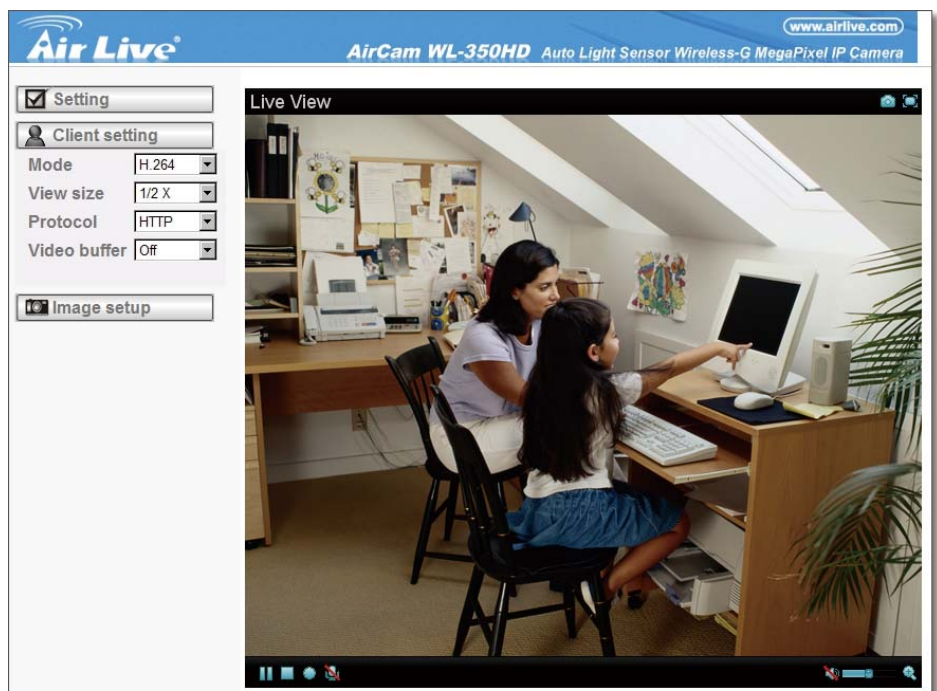


### Easy to Install

WL-350HD is a compact, light but full featured IP camera. It can be easily mounted on the wall or ceiling and decrease the burden of cabling with its network function. Moreover, by using its built-in wireless network function, user can even omit the cabling issue in the initial planning stage. Intelligent IP Installer, the assistant utility for searching WL-350HD in the network, can speed up the installation with only few clicks on the computer.

### Easy to Watch

WL-350HD takes full advantage of the network technology nowadays. By its build-in Web interface, monitoring is as simple as surfing on the Internet in our daily life. WL-350HD supports most popular web browsers included the Internet Explorer, Firefox, or even the one came with your iPhone. Once connect WL-350HD to the Internet, user can receive its video anytime, anywhere as long as he can access to the Internet.



## High Quality 1.3 MegaPixel Image

WL-350HD equips a 1.3 MegaPixel CMOS sensor for capturing high quality video stream. With this sensor, WL-350HD is capable to capture images up to SXVGA resolution (1280 x 1024 pixels). One of the most compelling advantages of MegaPixel surveillance systems is the ability to capture more details in a frame and at the same time not missing any finer details that are useful for license plate identification and human recognition.

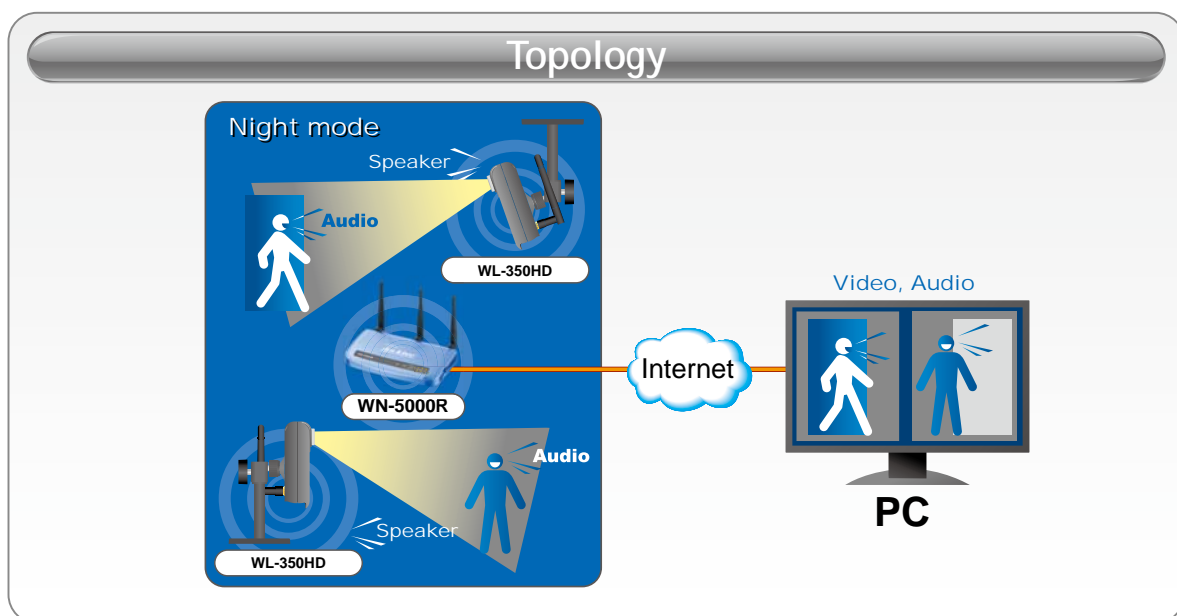


## H.264 Video Compression

H.264 is a high performing video compression standard that boasts a much higher compression ratio than MJPEG or MPEG-4, drastically reducing file sizes and conserving valuable network bandwidth and storage space. With up to 90% reduction in file size, a 1 MB image can be drastically reduced to as low as 10KB using H.264. WL-350HD adopts this technology, and provides a more economical way to utilize your storage space.

## Versatile Application

WL-350HD is an auto light sensor IP camera comes equipped with many advanced features suitable for all types of applications. The camera supports FTP, TCP/IP, SMTP, HTTP and many other Internet related protocols for remote surveillance. Motion detection with up to three sensors enables optimal performance of video detection by capturing images and sending those images for e-mail notification. With built-in auto-sensor LEDs that allow viewing objects in the dark, the WL-350HD constantly delivers superior image detail in any environment.



## Windows Live Messenger Supported

Don't familiar with those complex network settings on your SOHO router? Always need to ask "where is my IP camera" after opening your browser, but have no idea for how to figure its address out? WL-350HD supports Windows Live Messenger and throws those annoying questions right away. Via the Live Messenger, WL-350HD will automatically logon to the MSN, report its IP and feedback its live video through . User can easily find and monitor his WL-350HDs with only his Live Messenger.

## View from Mobile Phone

WL-350HD can deliver its video to the mobile phone via 3GPP function. Via this function, user can monitor his property through the 3G or 2.5G mobile network remotely. This is very useful when you are on your journey or business trip. What's more, user can also use the build-in browser of his smart phone, like the Safari of iPhone, for monitoring. By the Wi-Fi connection, WL-350HD and your mobile phone can play the role as the Baby Monitor.



## Professional Surveillance Software Supported

WL-350HD also supports CamPro Express, the bundle surveillance software that lets user to view and record multiple live images at the same time. Using several WL-350HDs with CamPro Express, user can easily build up a surveillance system at different environment. Moreover, WL-350HD also supports CamPro Professional, which is AirLive's intelligent video surveillance recording software. It is designed to meet most demands for professional installations. With its video analysis functions, such as tempering detection, user can build up a stable and efficient surveillance system.

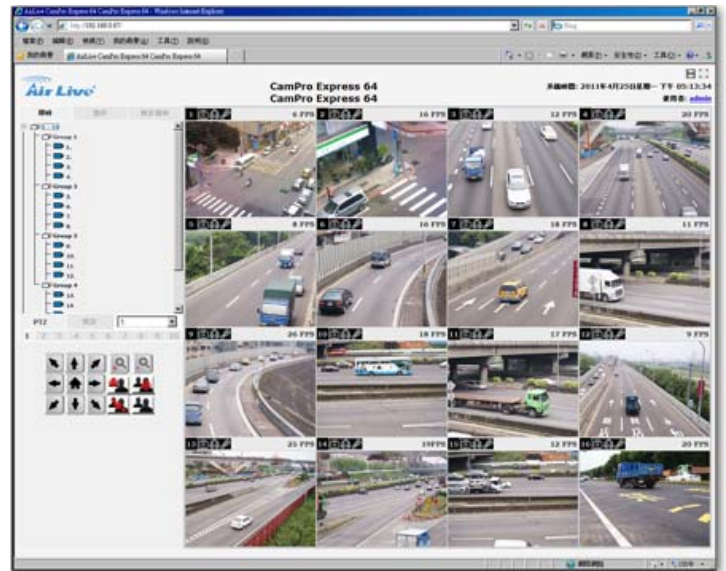


## APPS for Android and iOS

AirLive has worked with IPCAM Viewer developer to add support for AirLive IPCAM. So you can view multiple AirLive cameras using Android device, iPhone, or iPad. For more information about Android or iOS apps, please visit the FAQ page.

## Web Monitor

The CamPro Express allows you to monitor 64 channels via the computer and WEB UI. You can also choose to view the different camera in single view or 1/4/9/16/32/64 view.



### Specifications

#### Models

- AirCam WL-350HD

#### Image sensor

- 1/4" Progressive scan CMOS 1.3 Megapixel sensor

#### Lens

- F1.8, 4.2 mm

#### Digital Zoom

- 10x digital

#### Min Illumination

- 0 Lux at F2.0 with Night-vision LEDs on

#### IR working distance

- 5M

#### Video Compression

- Motion JPEG
- MPEG-4 Part2 (ISO/IEC 14496-2), Profile: SP
- H.264 BP

#### Resolutions

- UP to 1280 x 1024

#### Frame rate

- Motion JPEG: Up to 15 fps at 1280x1024  
Up to 30 fps at 640x480
- MPEG-4: Up to 15 fps at 1280x1024  
Up to 30 fps at 640x480
- H.264: Up to 15 fps at 1280x1024  
Up to 30 fps at 640x480

#### Video streaming

- Simultaneous Motion JPEG, MPEG-4, H.264 and 3GPP (4 streaming)

#### Audio

- Two-way (full duplex)

#### Wireless

- IEEE 802.11b/g

#### Alarm and event management

- Input: alarm buffer, motion detection, audio detection
- Output: network storage, FTP, SMTP, HTTP event
- Pre-and post alarm buffer

**Casing**

- PC+ABS casing

**Power**

- 12V DC, 1A, Max 12W

**Operating conditions**

- 0 ~ 50 °C (32 ~ 122 °F)

**Minimum web browsing requirement**

- Pentium 4 2.8GHz (or equivalent AMD)
- 256 MB RAM graphic cards(or equivalent on-board graphic cards)
- 1G RAM
- Window 2000, 2003, XP or Vista
- Mac OS Leopard 10.5

**Supported protocols**

- Bonjour, TCP/IP, DHCP, PPPoE, ARP, ICMP, FTP, SMTP, DNS, NTP, UPnP, RTSP, RTP, HTTP, TCP, UDP, 3GPP/ISMA RTSP

**Dimensions(HxWxD) and weight**

- 104 x 63 x 35 mm (4.1" x 2.5" x 1.4")
- 116.5 g (0.3 lb) excl. power supply

**Approvals**

- CE, FCC, RoHS

**Ordering Information:**

**AirLive WL-350HD**     Auto Light Sensor Wireless-G MegaPixel IP Camera