

## WMK-2056 Wall Mount Bracket Installation Guide

With the correct installation, the OD-2060HD/OD-2050HD camera can be used for outdoor wall mount environment under IP66 protection. Please follow the installation steps:

Step 1:

Unloose the thread-lock sealing nut on the cable glands.



Step 2:

Unloose the cable glands body with wrench.



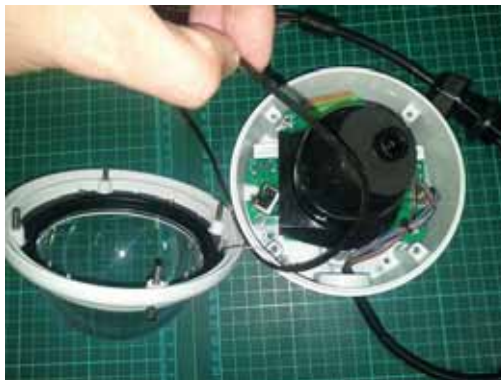
Step 3:

Release four bolts on the dome case with “hexagon wrench” which is in “camera accessories pack”.



Step 4:

Make sure the gasket is out of the camera.



Step 5:

Disconnect wires from the PCB inside.



Step 6:  
Pull out the cable.



Step 7:  
Remove three black screws at the bottom of the camera.



Step 8:  
Remove the white rubber at the bottom of the camera.



Step 9:

Cut the black band at wire segment. Remove the cable glands from the cable.



Cut the black band at wire segment



Remove the cable glands from the cable

Step 10:

Take out "bracket" and "camera adapter" from the box. Let the cable go through the center of "bracket" and "camera adapter" with wire segment.



Step 11:

Assemble "camera adapter" to the "bracket". Adjust the arrow direction (vertical direction between two uprights of three outer uprights) which approximate to the initial position of the camera.



Step 12:

Find out the nearest hole between “bracket” and “camera adapter”. Use “three screws with rubber” in “bracket accessories pack” to fasten them.



Step 13:

Let the cable wire segment go through the bottom hole from outside. Connect the wires, color to color, pin number to pin number to the PCB inside of the camera.



Step 14:

Take the “gasket” out from “bracket accessories pack”. Put it into the groove on “camera adapter”.



Step 15:

Use the last “three screws” in “bracket accessories pack” to fix the camera on “camera adapter”. Screws have to fasten in the holes where [Step 7] black screws had removed from. Make sure the “gasket” is in the right position before fastening the screws.



Step 16:

Put the gasket back to the groove on the top cover which had removed at Step 4.



Step 17:

Let the camera fitting the top cover to prevent the gasket dropping. Use hexagon wrench to fasten four bolts on the top cover. Be careful the wires when fasten the screws.



Step 18:

Take out “waterproof nut” from “camera accessories pack”. Fasten that in the outlet hole at the side of camera.



Step 19:  
Finish bracket assembly.

