

[Quick Setup Guide](#) ►

How to Use WMK-AirMax5N

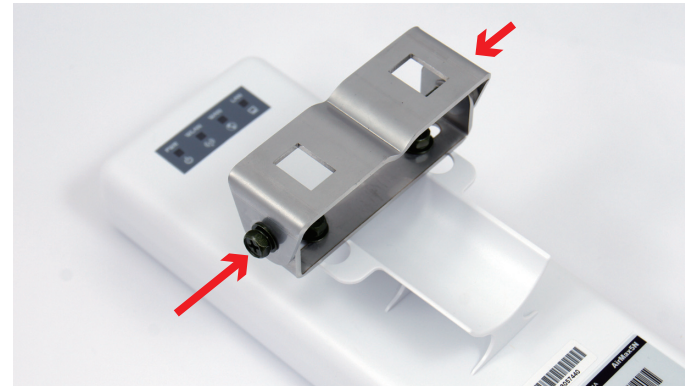
The optional WMK-AirMax5N metal pole/wall mount kit allows your AirMax5N to be mounted on the wall and pole. It enables you to tilt the AirMax5N to the desired vertical angle. If you have purchased such kit, please follow the instruction below to mount your AirMax5N.

Installation Steps:



Step1:

Install the first metal bracket into the AirMax5N and tighten the screws



Step2:

Install second metal bracket with first metal bracket together and tighten the screws.

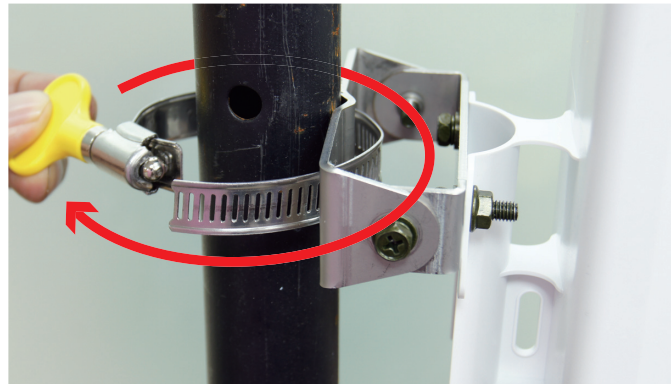
Package Content

- Screws x 4
- Metal ring x 1
- Metal bracket x 2
- Screw nut x2



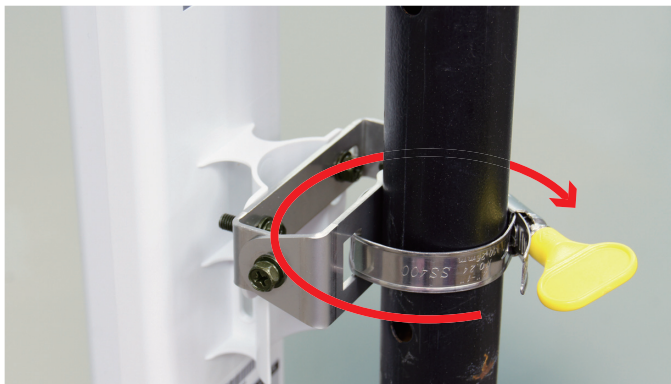
Step3:

Turn the metal ring (pipe fastener) until one end of the ring come off completely



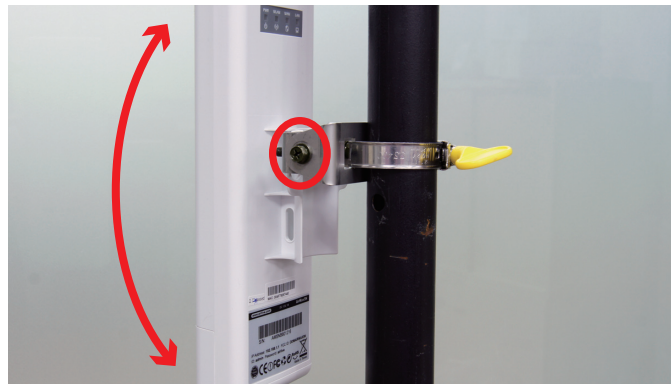
Step4:

Put the metal ring through the holes on the bracket and wrap it around the pole.



Step5:

Turn the metal ring until the ring is very tight around the pole.



Step6:

By adjusting the bracket screws, you can adjust the tilting angle of the AirMax5N.