

This device uses software which is partly or completely licensed under the terms of the GNU General Public License. The author of the software does not provide any warranty. This does not affect the warranty for the product itself.

To get source codes please contact: OvisLink Corp., 5F, No. 96, Min-Chuan Rd, Hsin-Tien City, Taipei, Taiwan, R.O.C. A fee will be charged for production and shipment for each copy of the source code.

GNU GENERAL PUBLIC LICENSE

Version 2, June 1991

Copyright (C) 1989, 1991 Free Software Foundation, Inc.
51 Franklin Street, Fifth Floor, Boston, MA 02110-1301, USA

Everyone is permitted to copy and distribute verbatim copies of this license document, but changing it is not allowed.
Preamble

The licenses for most software are designed to take away your freedom to share and change it. By contrast, the GNU General Public License is intended to guarantee your freedom to share and change free software—to make sure the software is free for all its users. This General Public License applies to most of the Free Software Foundation's software and to any other program whose authors commit to using it. (Some other Free Software Foundation software is covered by the GNU Lesser General Public License instead.) You can apply it to your programs, too.

When we speak of free software, we are referring to freedom, not price. Our General Public Licenses are designed to make sure that you have the freedom to distribute copies of free software (and charge for this service if you wish), that you receive source code or can get it if you want it, that you can change the software or use pieces of it in new free programs; and that you know you can do these things.

To protect your rights, we need to make restrictions that forbid anyone to deny you these rights or to ask you to surrender the rights. These restrictions translate to certain responsibilities for you if you distribute copies of the software, or if you modify it.

For example, if you distribute copies of such a program, whether gratis or for a fee, you must give the recipients all the rights that you have. You must make sure that they, too, receive or can get the source code. And you must show them these terms so they know their rights.

We protect your rights with two steps: (1) copyright the software, and (2) offer you this license which gives you legal permission to copy, distribute and/or modify the software.

Also, for each author's protection and ours, we want to make certain that everyone understands that there is no warranty for this free software. If the software is modified by someone else and passed on, we want its recipients to know that what they have is not the original, so that any problems introduced by others will not reflect on the original authors' reputations.

Finally, any free program is threatened constantly by software patents. We wish to avoid the danger that redistributors of a free program will individually obtain patent licenses, in effect making the program proprietary. To prevent this, we have made it clear that any patent must be licensed for everyone's free use or not licensed at all.

The precise terms and conditions for copying, distribution and modification follow.
TERMS AND CONDITIONS FOR COPYING, DISTRIBUTION AND MODIFICATION

0. This License applies to any program or other work which contains a notice placed by the copyright holder saying it may be distributed under the terms of this General Public License. The "Program", below, refers to any such program or work, and a "work based on the Program" means either the Program or any derivative work under copyright law: that is to say, a work containing the Program or a portion of it, either verbatim or with modifications and/or translated into another language. (Hereinafter, translation is included without limitation in the term "modification".) Each license is addressed as "you".

Activities other than copying, distribution and modification are not covered by this License; they are outside its scope. The act of running the Program is not restricted, and the output from the Program is covered only if its contents constitute a work based on the Program (independent of having been made by running the Program). Whether that is true depends on what the Program does.

1. You may copy and distribute verbatim copies of the Program's source code as you receive it, in any medium, provided that you conspicuously and appropriately publish on each copy an appropriate copyright notice and disclaimer of warranty; keep intact all the notices that refer to this License and to the absence of any warranty; and give any other recipients of the Program a copy of this License along with the Program.

You may charge a fee for the physical act of transferring a copy, and you may at your option offer warranty protection in exchange for a fee.

2. You may modify your copy or copies of the Program or any portion of it, thus forming a work based on the Program, and copy and distribute such modifications or work under the terms of Section 1 above, provided that you also meet all of these conditions:

- You must cause the modified files to carry prominent notices stating that you changed the files and the date of any change.
- You must cause any work that you distribute or publish, that in whole or in part contains or is derived from the Program or any part thereof, to be licensed as a whole at no charge to all third parties under the terms of this License.
- If the modified program normally reads commands interactively when run, you must cause it, when started running for such interactive use in the most ordinary way, to print or display an announcement including an appropriate copyright notice and a notice that there is no warranty (or else, saying that you provide a warranty) and that users may redistribute the program under these conditions, and telling the user how to view a copy of this License. (Exception: if the Program itself is interactive but does not normally print such an announcement, your work based on the Program is not required to print an announcement.)

These requirements apply to the modified work as a whole. If identifiable sections of that work are not derived from the Program, and can be reasonably considered independent and separate works in themselves, then this License, and its terms, do not apply to those sections when you distribute them as separate works. But when you distribute the same sections as part of a whole which is a work based on the Program, the distribution of the whole must be on the terms of this License, whose permissions for other licensees extend to the entire whole, and thus to each and every part regardless of who wrote it.

Thus, it is not the intent of this section to claim rights or contest your rights to work written entirely by you; rather, the intent is to exercise the right to control the distribution of derivative or collective works based on the Program.

In addition, mere aggregation of another work not based on the Program with the Program (or with a work based on the Program) on a volume of a storage or distribution medium does not bring the other work under the scope of this License.

3. You may copy and distribute the Program (or a work based on it, under Section 2) in object code or executable form under the terms of Sections 1 and 2 above provided that you also do one of the following:

- Accompany it with the complete corresponding machine-readable source code, which must be distributed under the terms of Sections 1 and 2 above on a medium customarily used for software interchange; or,
- Accompany it with a written offer, valid for at least three years, to give any third party, for a charge no more than your cost of physically performing source distribution, a complete machine-readable copy of the corresponding source code, to be distributed under the terms of Sections 1 and 2 above on a medium customarily used for software interchange; or,
- Accompany it with the information you received as to the offer to distribute corresponding source code. (This alternative is allowed only for noncommercial distribution and only if you received the program in object code or executable form with such an offer, in accord with Subsection b above.)

The source code for a work means the preferred form of the work for making modifications to it. For an executable work, complete source code means all the source code for all modules it contains, plus any associated interface definition files, plus the scripts used to control compilation and installation of the executable. However, as a special exception, the source code distributed need not include anything that is normally distributed (in either source or binary form) with the major components (compiler, kernel, and so on) of the operating system on which the executable runs, unless that component itself accompanies the executable.

If distribution of executable or object code is made by offering access to copy from a designated place, then offering equivalent access to copy the source code from the same place counts as distribution of the source code, even though third parties are not compelled to copy the source along with the object code.

4. You may not copy, modify, sublicense, or distribute the Program except as expressly provided under this License. Any attempt otherwise to copy, modify, sublicense or distribute the Program is void, and will automatically terminate your rights under this License. However, parties who have received copies, or rights, from you under this License will not have their licenses terminated so long as such parties remain in full compliance.

5. You are not required to accept this License, since you have not signed it. However, nothing else grants you permission to modify or distribute the Program or its derivative works. These actions are prohibited by law if you do not accept this License. Therefore, by modifying or distributing the Program (or any work based on the Program), you indicate your acceptance of this License to do so, and all its terms and conditions for copying, distributing or modifying the Program or works based on it.

6. Each time you redistribute the Program (or any work based on the Program), the recipient automatically receives a license from the original licensor to copy, distribute or modify the Program subject to these terms and conditions. You may not impose any further restrictions on the recipients' exercise of the rights granted herein. You are not responsible for enforcing compliance by third parties to this License.

7. If, as a consequence of a court judgment or allegation of patent infringement or for any other reason (not limited to patent issues), conditions are imposed on you (whether by court order, agreement or otherwise) that contradict the conditions of this License, they do not excuse you from the conditions of this License. If you cannot distribute so as to satisfy simultaneously your obligations under this License and any other pertinent obligations, then as a consequence you may not distribute the Program at all. For example, if a patent license would not permit royalty-free redistribution of the Program by all those who receive copies directly or indirectly through you, then the only way you could satisfy both it and this License would be to refrain entirely from distribution of the Program.

If any portion of this section is held invalid or unenforceable under any particular circumstance, the balance of the section is intended to apply and the section as a whole is intended to apply in other circumstances.

It is not the purpose of this section to induce you to infringe any patents or other property right claims or to contest validity of any such claims; this section has the sole purpose of protecting the integrity of the free software distribution system, which is implemented by public license practices. Many people have made generous contributions to the wide range of software distributed through that system in reliance on consistent application of that system; it is up to the author/donor to decide if he or she is willing to distribute software through any other system and a licensee cannot impose that choice.

This section is intended to make thoroughly clear what is believed to be a consequence of the rest of this License.

8. If the distribution and/or use of the Program is restricted in certain countries either by patents or by copyrighted interfaces, the original copyright holder who places the Program under this License may add an explicit geographical distribution limitation excluding those countries, so that distribution is permitted only in or among countries not thus excluded. In such case, this License incorporates the limitation as if written in the body of this License.

9. The Free Software Foundation may publish revised and/or new versions of the General Public License from time to time. Such new versions will be similar in spirit to the present version, but may differ in detail to address new problems or concerns.

Each version is given a distinguishing version number. If the Program specifies a version number of this License which applies to it and "any later version", you have the option of following the terms and conditions either of that version or of any later version published by the Free Software Foundation. If the Program does not specify a version number of this License, you may choose any version ever published by the Free Software Foundation.

10. If you wish to incorporate parts of the Program into other free programs whose distribution conditions are different, write to the author to ask for permission. For software which is copyrighted by the Free Software Foundation, write to the Free Software Foundation; we sometimes make exceptions for this. Our decision will be guided by the two goals of preserving the free status of all derivatives of our free software and of promoting the sharing and reuse of software generally.

NO WARRANTY

11. BECAUSE THE PROGRAM IS LICENSED FREE OF CHARGE, THERE IS NO WARRANTY FOR THE PROGRAM, TO THE EXTENT PERMITTED BY APPLICABLE LAW. EXCEPT WHEN OTHERWISE STATED IN WRITING THE COPYRIGHT HOLDERS AND/OR OTHER PARTIES PROVIDE THE PROGRAM "AS IS" WITHOUT WARRANTY OF ANY KIND, EITHER EXPRESSED OR IMPLIED, INCLUDING, BUT NOT LIMITED TO, THE IMPLIED WARRANTIES OF MERCHANTABILITY AND FITNESS FOR A PARTICULAR PURPOSE. THE ENTIRE RISK AS TO THE QUALITY AND PERFORMANCE OF THE PROGRAM IS WITH YOU. SHOULD THE PROGRAM PROVE DEFECTIVE, YOU ASSUME THE COST OF ALL NECESSARY SERVICING, REPAIR OR CORRECTION.

12. IN NO EVENT UNLESS REQUIRED BY APPLICABLE LAW OR AGREED TO IN WRITING WILL ANY COPYRIGHT HOLDER, OR ANY OTHER PARTY WHO MAY MODIFY AND/OR REDISTRIBUTE THE PROGRAM AS PERMITTED ABOVE, BE LIABLE TO YOU FOR DAMAGES, INCLUDING ANY GENERAL, SPECIAL, INCIDENTAL OR CONSEQUENTIAL DAMAGES ARISING OUT OF THE USE OR INABILITY TO USE THE PROGRAM (INCLUDING BUT NOT LIMITED TO LOSS OF DATA OR DATA BEING RENDERED INACCURATE OR LOSSES SUSTAINED BY YOU OR THIRD PARTIES OR A FAILURE OF THE PROGRAM TO OPERATE WITH ANY OTHER PROGRAMS), EVEN IF SUCH HOLDER OR OTHER PARTY HAS BEEN ADVISED OF THE POSSIBILITY OF SUCH DAMAGES.
END OF TERMS AND CONDITIONS
How to Apply These Terms to Your New Programs

If you develop a new program, and you want it to be of the greatest possible use to the public, the best way to achieve this is to make it free software which everyone can redistribute and change under these terms.

To do so, attach the following notices to the program. It is safest to attach them to the start of each source file to most effectively convey the exclusion of warranty; and each file should have at least the "copyright" line and a pointer to where the full notice is found.

one line to give the program's name and an idea of what it does.

Copyright (C) yyyy name of author

This program is free software; you can redistribute it and/or modify it under the terms of the GNU General Public License as published by the Free Software Foundation; either version 2 of the License, or (at your option) any later version.

This program is distributed in the hope that it will be useful, but WITHOUT ANY WARRANTY; without even the implied warranty of MERCHANTABILITY or FITNESS FOR A PARTICULAR PURPOSE. See the GNU General Public License for more details.

You should have received a copy of the GNU General Public License along with this program; if not, write to the Free Software Foundation, Inc., 51 Franklin Street, Fifth Floor, Boston, MA 02110-1301, USA.

Also add information on how to contact you by electronic and paper mail.

If the program is interactive, make it output a short notice like this when it starts in an interactive mode:

Gnomovision version 69, Copyright (C) year name of author Gnomovision comes with ABSOLUTELY NO WARRANTY; for details type `show w'. This is free software, and you are welcome to redistribute it under certain conditions; type `show c' for details.

The hypothetical commands `show w' and `show c' should show the appropriate parts of the General Public License. Of course, the commands you use may be called something other than `show w' and `show c'; they could even be mouse-clicks or menu items—whatever suits your program.

You should also get your employer (if you work as a programmer) or your school, if any, to sign a "copyright disclaimer" for the program, if necessary. Here is a sample; alter the names:

Yoyodyne, Inc., hereby disclaims all copyright interest in the program `Gnomovision' (which makes passes at compilers) written by James Hacker.

signature of Ty Coon, 1 April 1989
Ty Coon, President of Vice

This General Public License does not permit incorporating your program into proprietary programs. If your program is a subroutine library, you may consider it more useful to permit linking proprietary applications with the library. If this is what you want to do, use the GNU Lesser General Public License instead of this License.

Copyright

The contents of this publication may not be reproduced in any part or as a whole, stored, transcribed in an information retrieval system, translated into any language, or transmitted in any form or by any means, mechanical, magnetic, electronic, optical, photocopying, manual, or otherwise, without the prior written permission.

Trademarks

All products, company, brand names are trademarks or registered trademarks of their respective companies. They are used for identification purpose only. Specifications are subject to be changed without prior notice.

FCC Interference Statement

This equipment has been tested and found to comply with the limits for a Class B digital device pursuant to Part 15 of the FCC Rules. These limits are designed to provide reasonable protection against radio interference in a commercial environment. This equipment can generate, use and radiate radio frequency energy and, if not installed and used in accordance with the instructions in this manual, may cause harmful interference to radio communications. Operation of this equipment in a residential area is likely to cause interference, in which case the user, at his own expense, will be required to take whatever measures are necessary to correct the interference.

CE Declaration of Conformity

This equipment complies with the requirements relating to electromagnetic compatibility, EN 55022/A1 Class B.

Table of Contents

Chapter 1: Introduction.....	4
1.1 Overview.....	4
1.2 Features.....	5
1.3 System Requirements	6
1.4 Package List.....	6
1.5 Hardware Ports and Buttons	7
1.6 LED Indicators	8
Chapter 2: Getting Started.....	9
2.1 Hard Disk installation	9
2.2 Making Connections	11
2.2.2 Wired Ethernet Connection	12
2.2.3 Wireless Connection.....	15
2.3 File sharing.....	16
2.3.1 Accessing the network hard drive via my network places.....	17
2.3.2 Searching the computers.....	17
2.3.3 Search the “Entire Network” Manually.....	17
2.3.4 Accessing Files via FTP	18
Chapter 3: Making Configuration.....	19
3.1 Configuration Wizard	19
3.2 Network Settings	27
3.2.1 DHCP Setting	27
3.2.2 Wireless Setting	28
Chapter 4: Storage Configuration.....	42
4.1 Disk Utility.....	42
4.2 File Sharing	43
4.3 Access Control.....	44
4.4 File Browser	46
Chapter 5: Advanced Tools.....	47
5.1 Backup Configuration	48
5.2 Reset Configuration to Default.....	48
5.3 Reboot.....	48
5.4 Firmware Upgrade	48
Chapter 6: MISC	49
6.1 Time Setting	49
6.2 Login Setting	50
6.3 System Log	51
Chapter 7: Download Assistant	52
7.1 FTP	52
7.2 HTTP	53
7.3 BitTorrent	55
7.4 Status	56
Chapter 8: FAQ & Trouble Shooting.....	57
8.1 What can I do when I have some trouble?.....	57
8.2 How to setup wireless function?	59
8.3 How to map network drive in Windows?	66
8.4 How to backup data by using Microsoft backup utility?.....	68

Chapter 1: Introduction

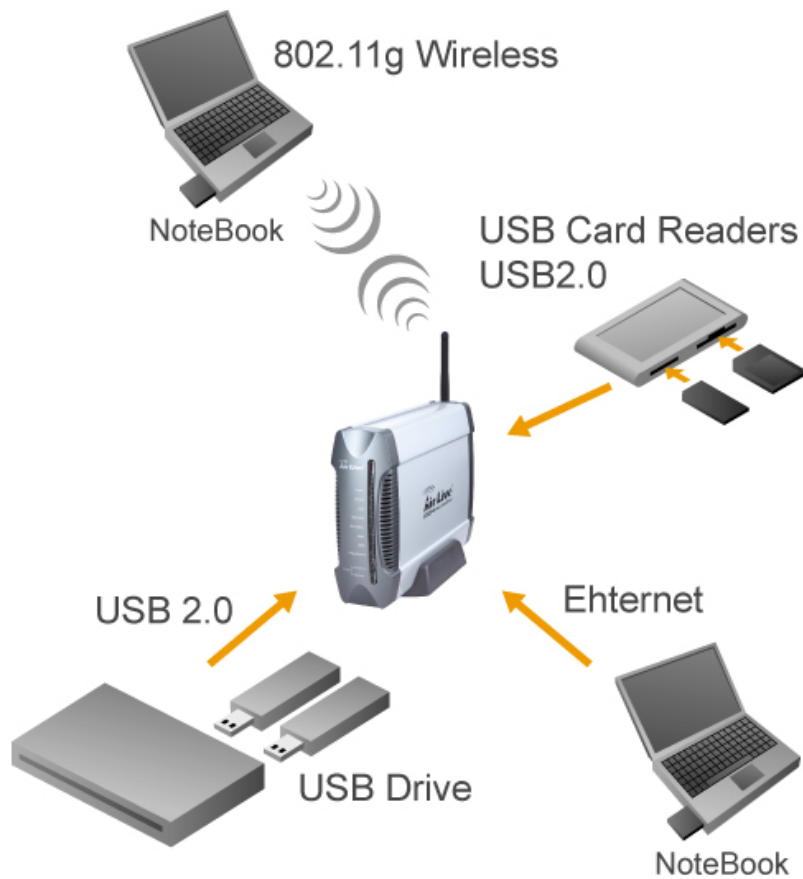
Congratulations on your purchase of AirLive WMU-6500FS. This product is specifically designed for Small Office and Home Office needs. It provides a complete SOHO solution for Internet surfing, and is easy to configure and operate even for non-technical users. Instructions for installing and configuring this product can be found in this manual. Before you install and use this product, please read this manual carefully for fully exploiting the functions of this product.

1.1 Overview

The AirLive WMU-6500FS is designed for 3.5" IDE and serial-ATA (SATA) hard disk drive use. It is an ideal device for small-medium companies and home users who need to backup and share files more efficiently and easily anytime and anywhere. Additionally, with its WLAN* feature which is fully compliant with IEEE 802.11b/g will also let you share files easily.

*The WLAN feature is depended on the specified model only.

The AirLive WMU-6500FS offers WLAN mobility for home user and business people to maintain continuous network connectivity. Home users can stay connected to the network anywhere through a building without being limited by LAN cables via its AP functionality. This device also has the additional advantage of providing AirLive WMU-6500FS with its 3.5-inch hard disk which allows you to share information and storage capacity via wireless or wired network. The AirLive WMU-6500FS supports the UPnP content directories and users can share the music and video files easily. Besides, the click-and-copying of files from a flash drive to the AirLive WMU-6500FS hard disk make the user backup files efficiently. Please refer to the following application diagram.



1.2 Features

Basic Functions

- Adapt for one 3.5-inch IDE or Serial-ATA(SATA) hard disk drive.
- Network File Storage and File Sharing via My Network Places in Windows or Samba in Linux and Mac OS.
- Backup files easily: compliant with Windows backup utility.
- Support FAT, FAT32, and Ext2 files system and can read from NTFS file system.
- Support security level as Guest or Authorization user for file sharing.
- Real time clock to synchronize the computer time setting.
- Easy to upgrade: using web browser or windows application to upgrade new version of firmware.
- Browser-based interface configuration and management: OS independent, easy-to-use for consumer installation.
- Support HDD sleeping mode to save power consumption.
- Built-in FTP server.
- UPnP (Universal Plug and Play) AV content directory support.
- Scheduling download assistant.
- Aluminum housing provides better effect for heat-release. *(It's normal that aluminum housing getting warm when AirLive WMU-6500FS is working.)*

USB Device

- Built-in USB2.0 host to connect to USB mass storage device, like USB flash drive, USB hard drive, etc.
- Easy copy button: Offer the button to copy folders and files from USB device to internal HDD.

Wireless Functions

- Up to 54Mbps data rate by incorporating Orthogonal Frequency Division Multiplexing (OFDM).
- IEEE 802.11b compatible (11Mbps): Allowing inter-operation among multiple vendors.
- IEEE 802.11g compatible (54Mbps): Allowing inter-operation among multiple vendors.
- Wireless data rate supported: 6/12/18/24/36/48/54 Mbps in 802.11g mode; 1/2/5.5/11Mbps in 802.11b mode.
- Support 64/128-bit WEP encryption.
- Support 802.1X authentication.
- Support WPA, WPA-PSK with TKIP and AES encryption.
- Support WPA2, WPA2-PSK with TKIP and AES encryption.
- Support Client, AP, WDS, and WDS Hybrid wireless modes.

(NOTE. Only AP mode and Hybrid mode can support WPA and WPA2.)

Scheduling Download Assistant

- Scheduling download assistant allows users to download files via FTP, HTTP, and BitTorrent without turning on computer.

1.3 System Requirements

To start to use the AirLive WMU-6500FS, your system must have the following minimum requirements:

- Windows 95 / 98 / ME / 2000 / XP, or any other operating system can support Samba.
- An Ethernet (10BaseT or 10/100BaseT) adapter for wired client.
- At least one WLAN client adapter of 802.11g (54Mbps) or 802.11b (11Mbps) for wireless connection.
- TCP/IP and NetBIOS network protocol installed.
- Web browser installed.

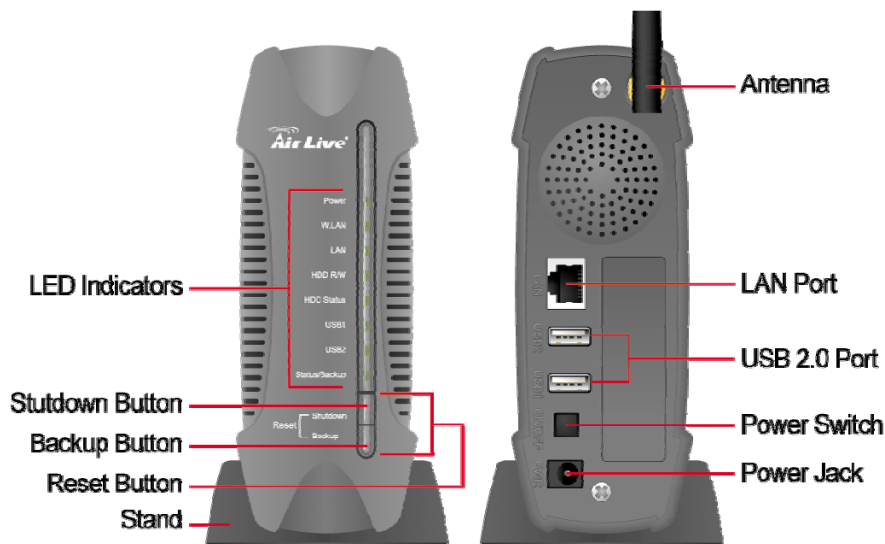
The AirLive WMU-6500FS requires an external 12V, 4A power supply which is included in the package. For safe operation, please **only** use the power adapter which is provided by this product.

1.4 Package List

The AirLive WMU-6500FS package contains the following items:

Item	Quantity
AirLive WMU-6500FS	1
Stand	1
IDE cable (inside the device)	1
SATA cable (inside the device)	1
Power cable to connect IDE or SATA HDD (inside the device)	1
2.4GHz dipole antenna	1
Power adapter (12 Volts DC, 4A)	1
Power cord	1
RJ-45 Ethernet cable	1
Quick installation guide	1
CD (utilities and user manual)	1
Screws (For fixing HDD)	4
Rubber feet	4

1.5 Hardware Ports and Buttons



Front Buttons:

Buttons	Description
Shutdown	Press the button for 4 seconds to shut down the whole system before power-off.

Backup	Press the button for 4 seconds to copy data from attached USB device to HDD.
Reset	Press the buttons of “Shutdown” and “Backup” simultaneously for 6 seconds to reset the system setting to factory default.

Rear Ports:

Ports	Description
Antenna	Connect 2.4GHz dipole antenna.
LAN	Automatically MDI / MDIX LAN port can sense the cable type when connecting to Ethernet-enabled computer, network of hub, switch, or router.
USB1 / USB2	The ports where you can connect to USB disk, digital camera, or card reader.
Power Switch	Switch on/off the device.
Power Jack	12V / 4A power inlet.

1.6 LED Indicators

LED	Light Off	Solid Light	Blinking
Power	Power off	Power on	
W.LAN	No packet	On transmitting	
LAN	No device	Linked	On transmitting.
HDD R/W	Not in use	HDD read/write	
HDD Status	No HDD	HDD full or error	More blinking quickly, fewer available HDD capacity.
USB 1	No device	USB drive ready	
USB 2	No device	USB drive ready	

Status (Backup)			<ol style="list-style-type: none"> 1. Blinking once per second when device works normally. 2. Blinking quickly when "Backup" button is pressed.
-----------------	--	--	---

Chapter 2: Getting Started

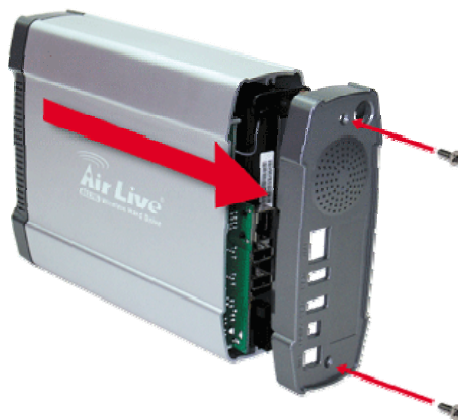
2.1 Hard Disk installation

Follow the steps below to insert the 3.5-inch hard disk and assemble the device before using the AirLive WMU-6500FS.

WARNING:

The AirLive WMU-6500FS is not hot-swappable. Please make sure that it is turned off and not connected to the power outlet when performing the following assembly procedure.

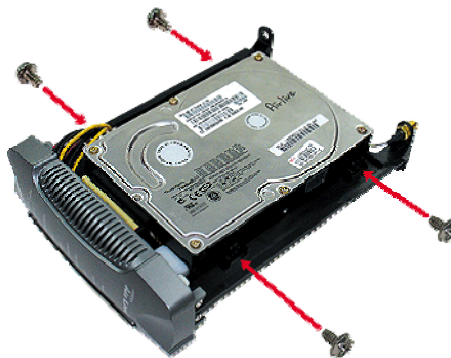
Step 1: Unfasten two screws at the rear side of AirLive WMU-6500FS, and pull out the back cover.



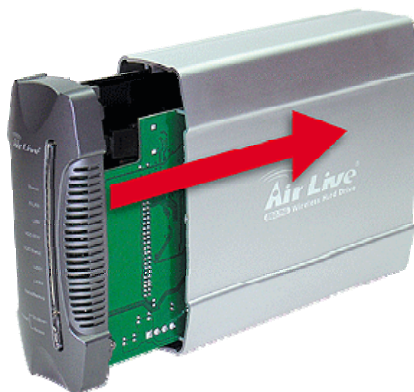
Step 2: Pull out the front panel.



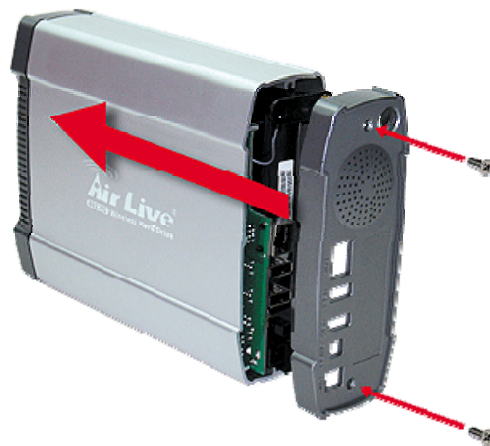
Step 3: Put the 3.5-inch IDE or SATA hard disk into the slot, and connect proper data (the red cable is used for SATA hard disk and the gray one is for IDE hard disk) and power cable to the hard disk. Then fasten the screws that are included in the package to fix hard disk.



Step 4: Put the front panel back.



Step 5: Put the back cover back, and assemble tightly. Finally, fasten two screws.



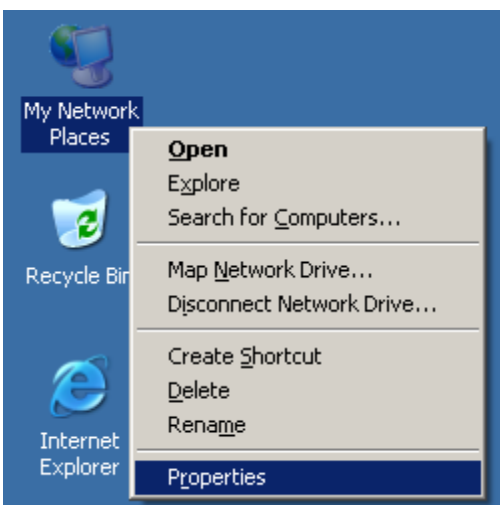
2.2 Making Connections

In order to access the AirLive WMU-6500FS as the AirLive WMU-6500FS drive or as a wireless AP, you need to configure the TCP/IP settings correctly in advance. Either the “Wired Ethernet Connection” or “Wireless Connection” can be used to connect to AirLive WMU-6500FS.

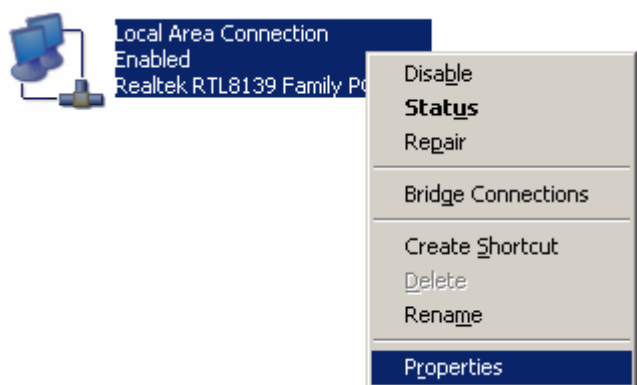
2.2.1 Install Necessary Communication Protocols

Follow the steps below to install “**Client for Microsoft Networks**”, “**File and Printer Sharing for Microsoft Networks**”, and “**Internet Protocol (TCP/IP)**” on your computer.

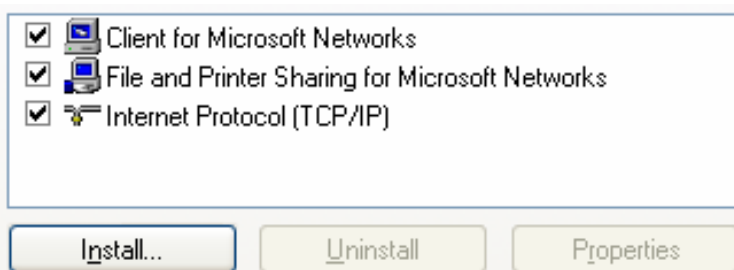
Step 1: Select the “**My Network Places**” on the desktop menu, and right click on the icon to choose “**Properties**”.



Step 2: You may see there are many connections in your computer. Just select one which you will use it to connect to AirLive WMU-6500FS. Then choose the “**Properties**” of that connection.



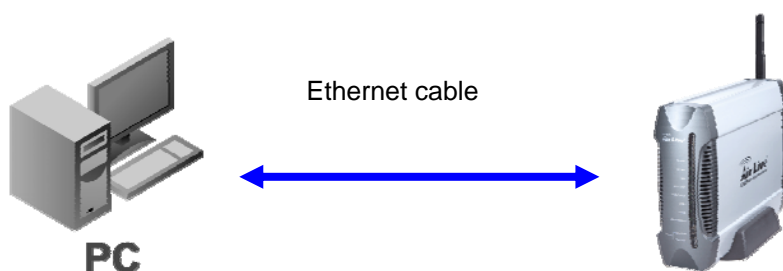
Step 3: Check the “**Client for Microsoft Networks**”, “**File and Printer Sharing for Microsoft Networks**”, and “**Internet Protocol (TCP/IP)**” are installed or not. If not, please install those communication protocols.



If you use other operating system, such as Linux, X-window or Mac OS, please refer to original manual of your OS to finish the configurations of TCP/IP and other required communication protocols.

2.2.2 Wired Ethernet Connection

Use one Ethernet cable to connect the AirLive WMU-6500FS and your computer directly. Then power on the AirLive WMU-6500FS.



The AirLive WMU-6500FS will detect automatically if there is any DHCP server nearby. If yes, it will get an IP address from DHCP server. But if there is no DHCP server in your environment, the AirLive WMU-6500FS will become a DHCP server, and assign IP address to your computer. You can get some information as below shown.

Then go to **command prompt** mode from **Start Menu->Programs-> Accessories**, and type “**ipconfig**”. If the IP address and subnet mask are shown 0.0.0.0, please type “**ipconfig /renew**” to retrieve an IP address.

```

C:\>ipconfig

Windows IP Configuration

Ethernet adapter Local Area Connection:

    Connection-specific DNS Suffix  . : 
    IP Address . . . . . : 0.0.0.0
    Subnet Mask . . . . . : 0.0.0.0
    Default Gateway . . . . . : 
  
```

```

C:\>ipconfig /renew

Windows IP Configuration

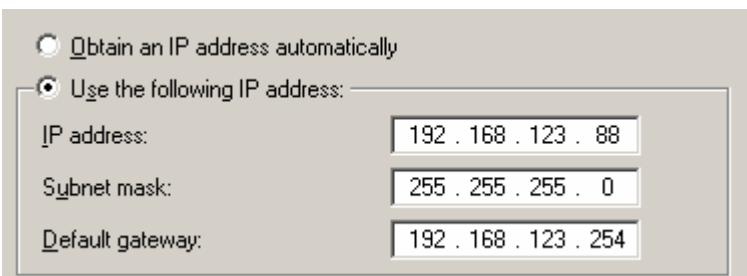
Ethernet adapter Local Area Connection:

    Connection-specific DNS Suffix  . : 
    IP Address . . . . . : 192.168.123.50
    Subnet Mask . . . . . : 255.255.255.0
    Default Gateway . . . . . : 192.168.123.254
  
```

In addition, you can also allocate a static IP address on your computer as below:

Step 1: Find the **Internet Protocol (TCP/IP) Properties** from **My Network Places** and check the **Properties of Local Area Network Connection**. Choose “**Use the following IP address**”, and assign one **IP address** which can be from 192.168.123.1 to 192.168.123.253. Here we use the 192.168.123.88 as the IP address. The **Subnet mask** must be 255.255.255.0, and the **Default gateway** must be 192.168.123.254. Then click “**OK**” button to complete TCP/IP setup.

NOTE. The IP address of default gateway must be same as IP address of AirLive WMU-6500FS.



Step 2: Then go to command prompt mode from **Start Menu->Programs-> Accessories**. Type “**ipconfig**” and press the “**Enter**”. Then the following message should be found. Check the IP address, Subnet Mask, and Default Gateway addresses are same as previous settings. If same, you are successful to setup the network configuration.

```

C:\Documents and Settings\plm>ipconfig

Windows IP Configuration

Ethernet adapter Local Area Connection:

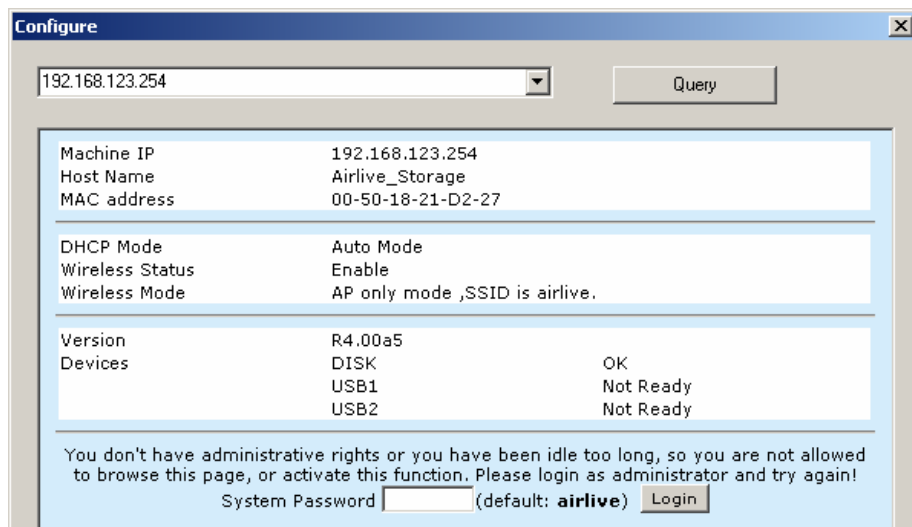
    Connection-specific DNS Suffix  . : 
    IP Address . . . . . : 192.168.123.88
    Subnet Mask . . . . . : 255.255.255.0
    Default Gateway . . . . . : 192.168.123.254
  
```

There are three methods to configure AirLive WMU-6500FS. Please refer to the following instructions, and choose one which is most convenient to you.

Method 1: Use Configuration Tool to Setup

Before you can do this, you need to install the configuration tool from installation CD first. After that, please use the configuration tool to “Query” and you will see the status page and input “airlive” to login.

NOTE. The default login password is “airlive”.



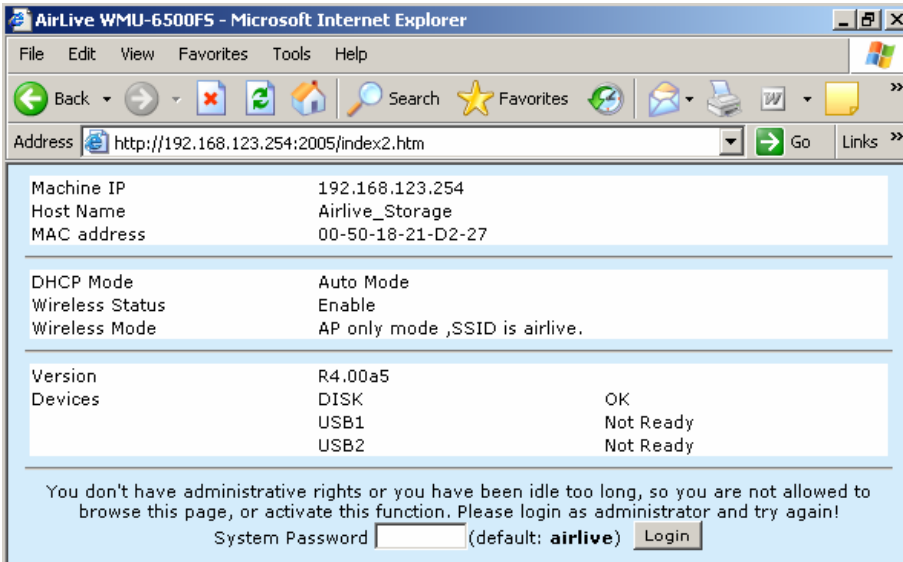
If there is any DHCP server in the network, AirLive WMU-6500FS will be as the client and get one IP address from existed DHCP server. You can also use configuration utility to Query to find the IP address that AirLive WMU-6500FS gets.

About other operating systems, such as Linux X-window or Mac OS, please use web browser to configure.

Method 2: Use Web Browser to Setup

Launch any web browser, such as Internet Explorer or Netscape on your computer, and then input IP address of AirLive WMU-6500FS in the address field. For an example, type “http://192.168.123.254” and press “Enter”, then you can see the configuration page of AirLive WMU-6500FS

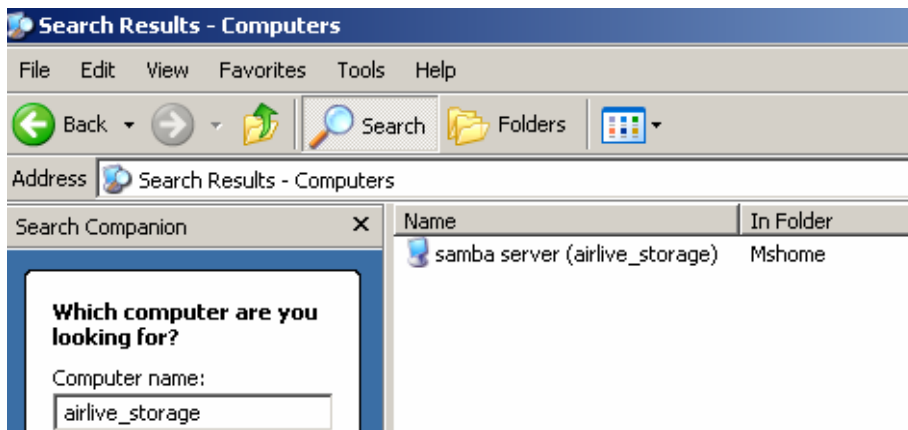
NOTE. You have to know the IP address of AirLive WMU-6500FS when you use this method. The default IP address is “**192.168.123.254**”.



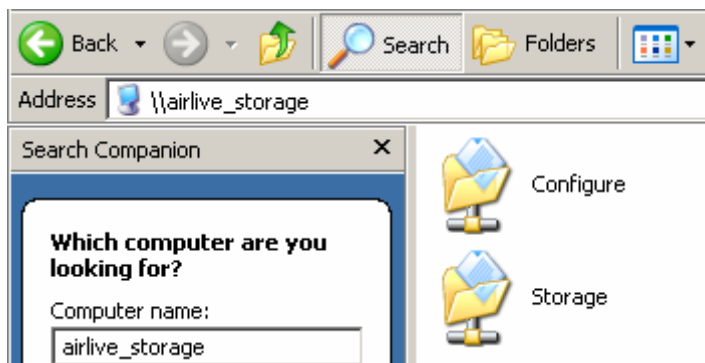
Method 3: Use “My Network Places” to Search and Setup

First, go to **My Network Places** and search “**airlive_Storage**”.

NOTE. The default host name of AirLive WMU-6500FS is “**airlive_Storage**”.



Double click on “**samba server (airlive_Storage)**”, and you will see two folders. Then double click the folder “**Configure**”.



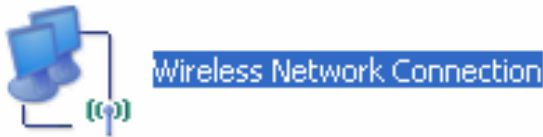
You can find there is a “**Configure.html**” in the folder, just double click on “**Configure.html**” directly to see configuration page.

2.2.3 Wireless Connection

Follow the steps below to connect to the AirLive WMU-6500FS in a wireless environment. We assume that there is at

least one WLAN card installed on your computer, and AirLive WMU-6500FS is powered on.

Step 1: Enabling the WLAN card first, and check the **Wireless f Connection** properties from **My Network Places**.



Step 2: Select the **Wireless Networks** icon after entering the “**Wireless Network Connection Properties**”. You will find the **airlive_Storage** in the available network list, then select the **airlive_Storage**, and click **Connect** button to connect. Otherwise, if you can’t find **airlive_Storage**, please refresh network list again.

NOTE. The default network name(SSID) of AirLive WMU-6500FS is “airlive”.



Step 3: Then go to **command prompt** mode from **Start Menu->Programs-> Accessories**. Type “**ipconfig**” in the command prompt window and press the “**Enter**”. Then the messages of **IP address**, **Subnet Mask**, and **Default Gateway** should be found.

Step 4: After you connect to AirLive WMU-6500FS successfully, you can use method 1~3 that have been described in section 2.2.2 to configure AirLive WMU-6500FS.

WARNING:

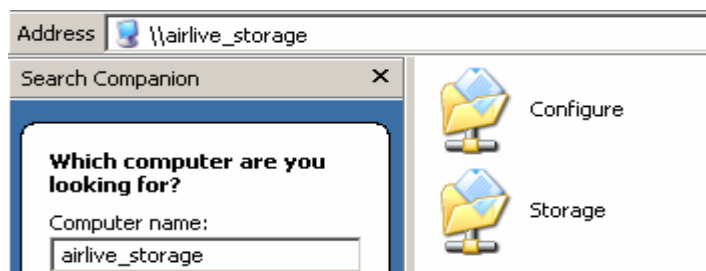
We strongly recommended that you enable wireless encryption feature, or add User Access rules on AirLive WMU-6500FS. Otherwise, everyone can connect to it wirelessly and access data which is stored in your hard drive.

2.3 File sharing

The AirLive WMU-6500FS can be a shared network hard drive in an existing wireless or wired network environment. The users in the same network area can read or write data from the device as required. The following various steps are for users to start using the network hard drive.

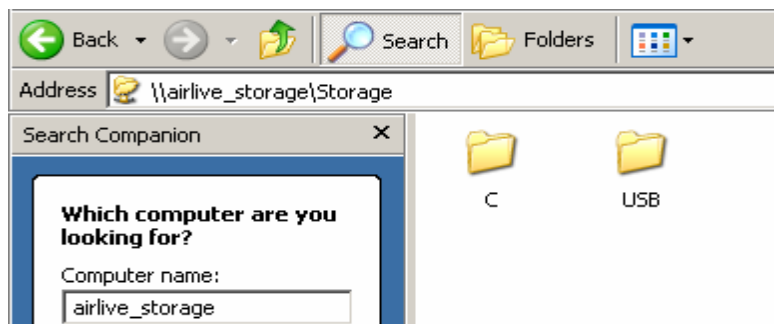
2.3.1 Accessing the network hard drive via my network places

Select the “**My Network Places**” and type the address of “**\\airlive_storage**” and press “**Enter**”. Then you will find the **Storage** icon.



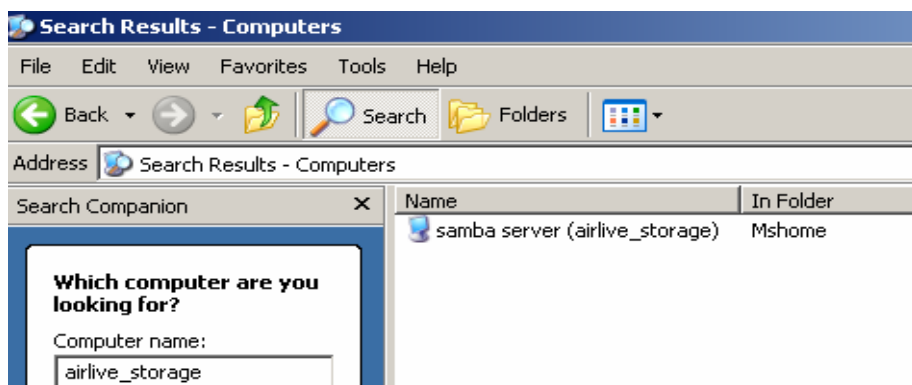
Click the “**Storage**” icon, and you will find the “**C**” folder as below. The folder “**C**” is the root directory of attached hard disk drive.

NOTE. The other folder “**USB**” is the root directory of attached USB drive.



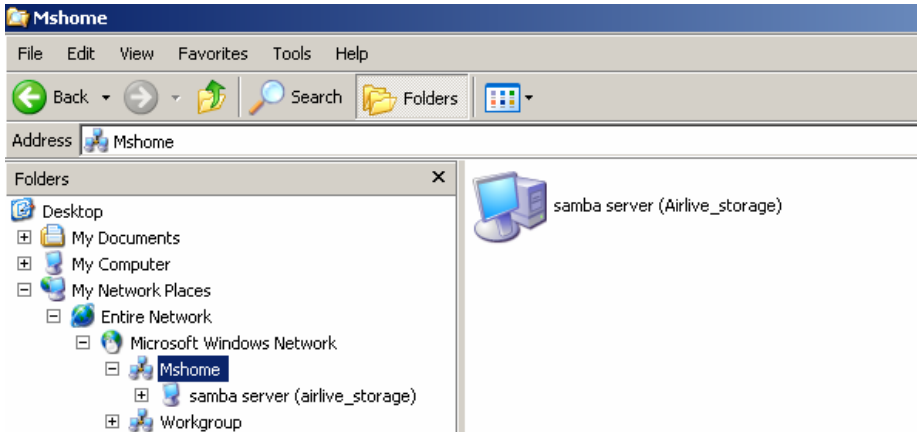
2.3.2 Searching the computers

Open “**My Computer**” on the desktop menu, and use the “**Search**” function to search the computer of “**airlive_storage**” as below.



2.3.3 Search the “Entire Network” Manually

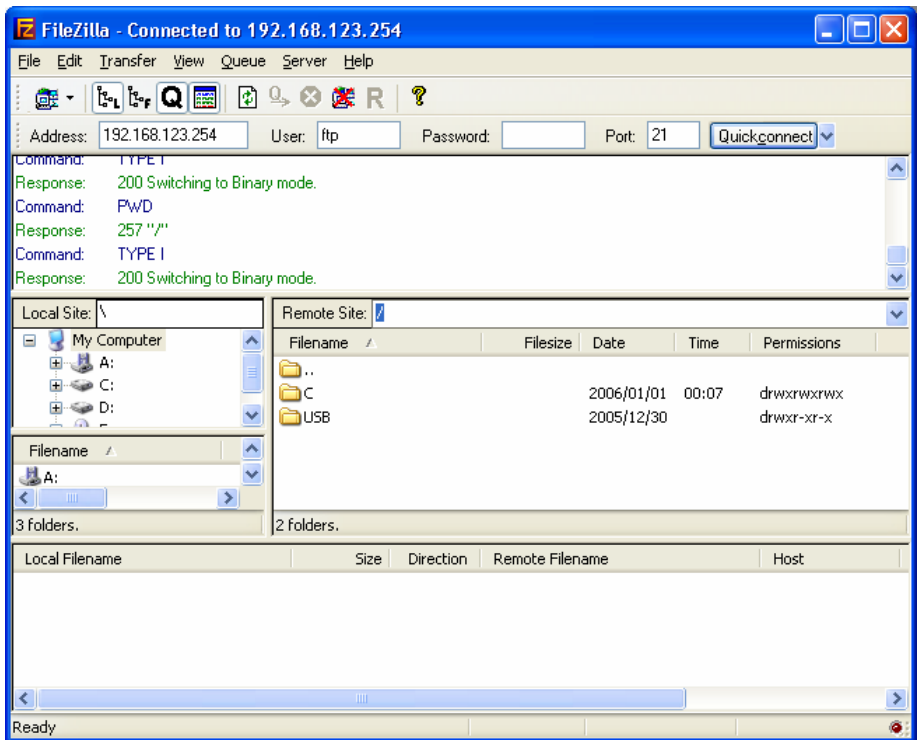
Open **Windows Explorer**, and then click the **My Network Places** icon. Double click the **Entire Network** to view the components of the network. Select and click the **Microsoft Windows Network** icon, then the various network components showed in the list. The default workgroup of AirLive WMU-6500FS is **Mshome**.



2.3.4 Accessing Files via FTP

The AirLive WMU-6500FS offers FTP service for the clients which don't support Microsoft Windows File sharing. You can use any FTP client utility to connect to AirLive WMU-6500FS with anonymous username and password (username: ftp, and without password) when the **Security Level** is set to **"Guest mode"**. But if you change to **"Authorization mode"**, the accessing permission is limited, and then users have to input specified username and password to access any permitted folders. The rule of access control would be explained in much detail in chapter 4.

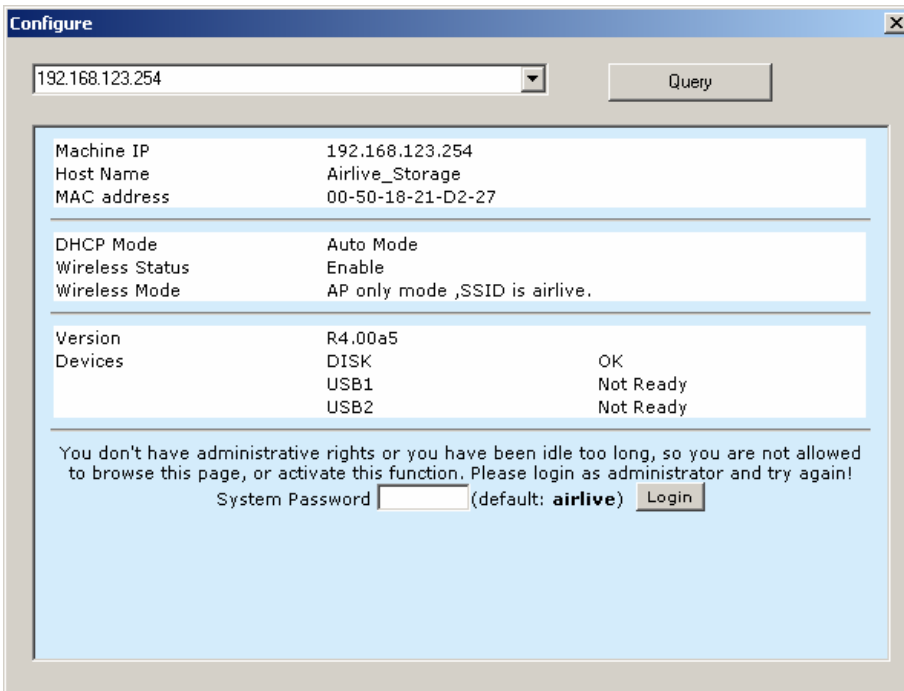
NOTE. The FTP service of AirLive WMU-6500FS can be switched off.



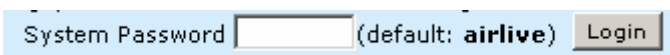
Chapter 3: Making Configuration

The AirLive WMU-6500FS can be configured various settings through the proprietary Configuration Tool or general web browser. Even you don't know which IP is being used by AirLive WMU-6500FS, the Configuration Tool will help you to find it. All you have to do is click the **“Query”** button of the Configuration Tool.

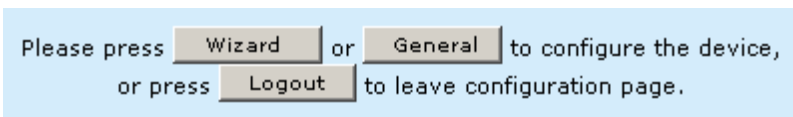
NOTE. You need to know the IP address of AirLive WMU-6500FS if you want to configure it by web browser. The default IP address of AirLive WMU-6500FS is 192.168.123.254.



When you enter the configuration mode, you are requested to provide the **“System Password”** to activate the configurations. The default login password is **“airlive”**.



After login, you could see these buttons:



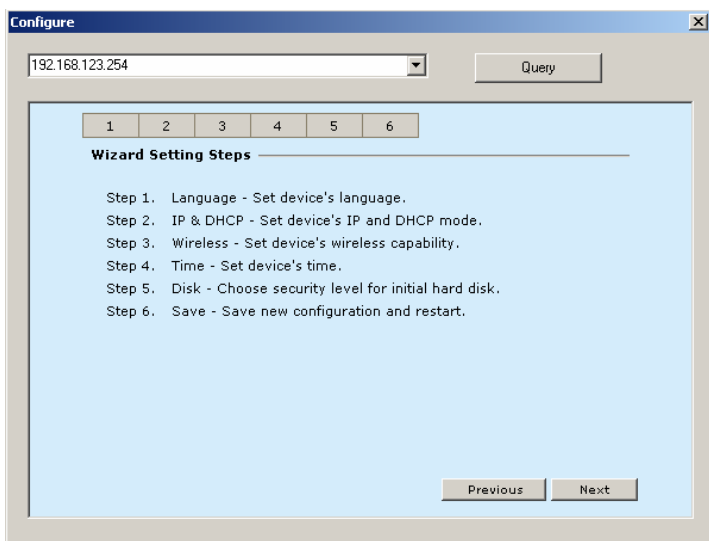
Press **“Wizard”** button if you want to do basic settings with simpler way. (Please check section 3.1)

Press **“General”** button if you want to make some advanced settings. (Please check each item from section 3.2)

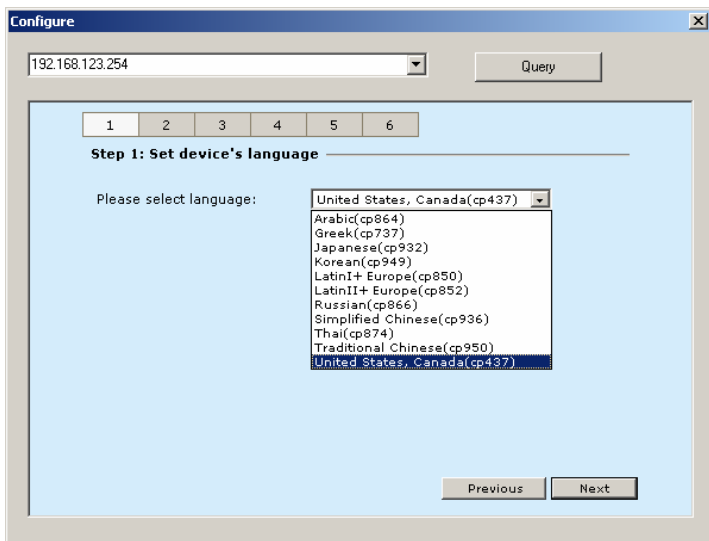
Press **“Logout”** button if you don't want to do anything.

3.1 Configuration Wizard

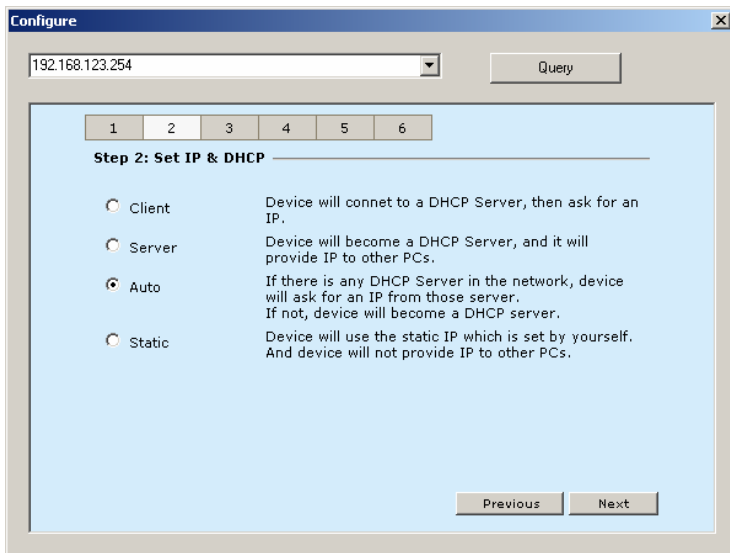
With wizard setting steps, you could configure AirLive WMU-6500FS in a very simple way. This configuration wizard includes settings of **Language**, **IP & DHCP**, **Wireless**, **Time**, and **Disk**. Press “Next” button to start configuration.



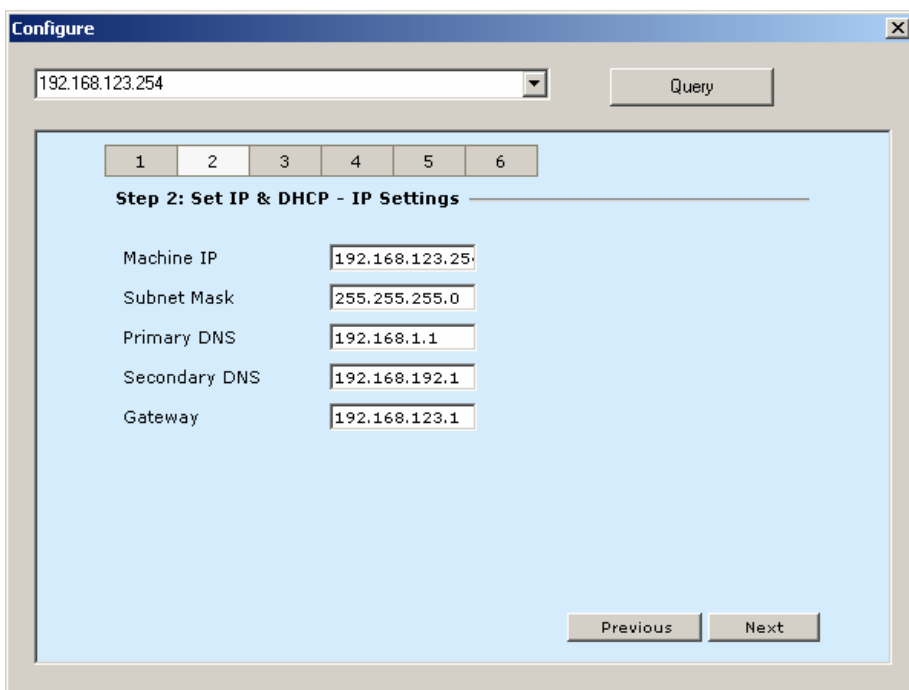
Step 1: Select which language will be used for folder/file name in the hard disk. Incorrect language setting may cause folder/file name unreadable.



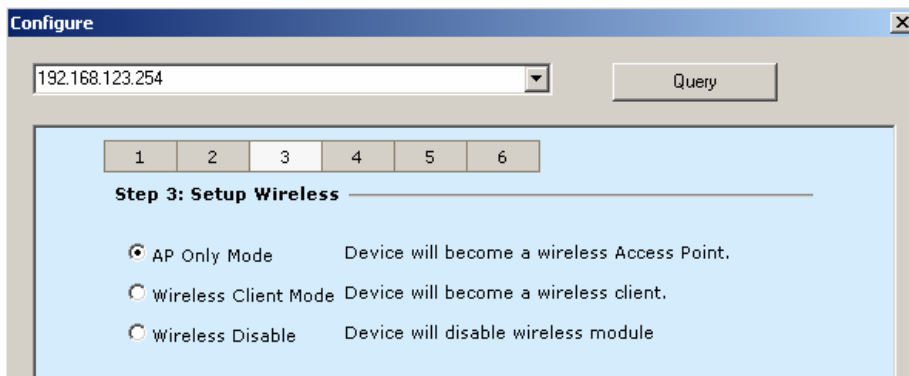
Step 2: If you don't know how to set DHCP option, just keep it as Auto.



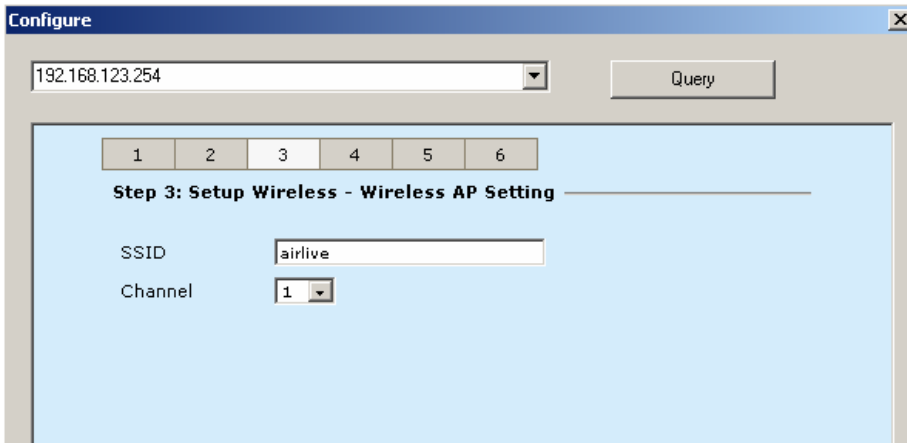
If you choose **Server/Auto/Static** mode, you need to set some TCP/IP settings for AirLive WMU-6500FS. If you are not sure about these values, please ask your network administrator or ISP.



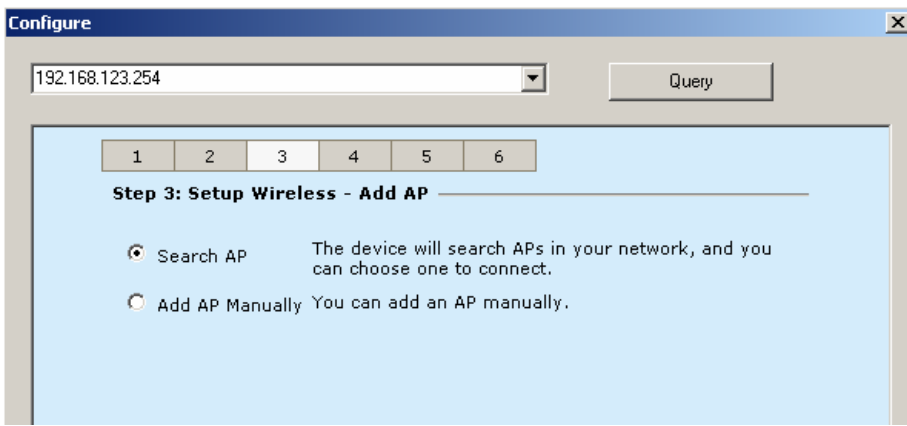
Step 3: Choose which wireless mode that you want to use. You can also disable wireless feature of AirLive WMU-6500FS.



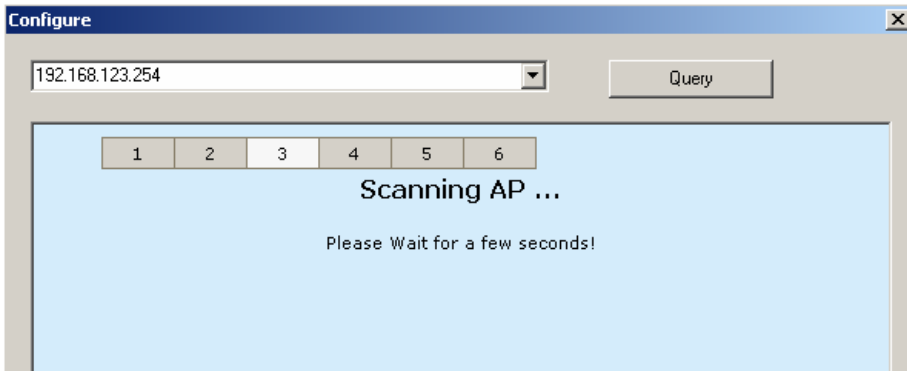
If you choose **AP Only Mode**, in next page, you could specify the SSID and the wireless channel number for AirLive WMU-6500FS.



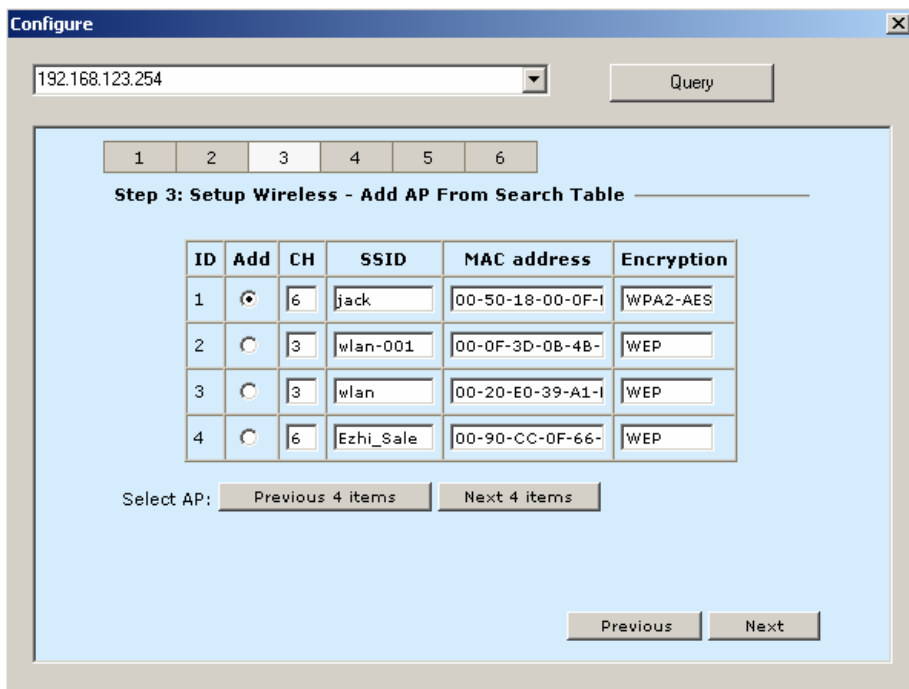
If you select the **Wireless Client Mode**, in next page, you would have to specify the AP that you want AirLive WMU-6500FS to connect to.



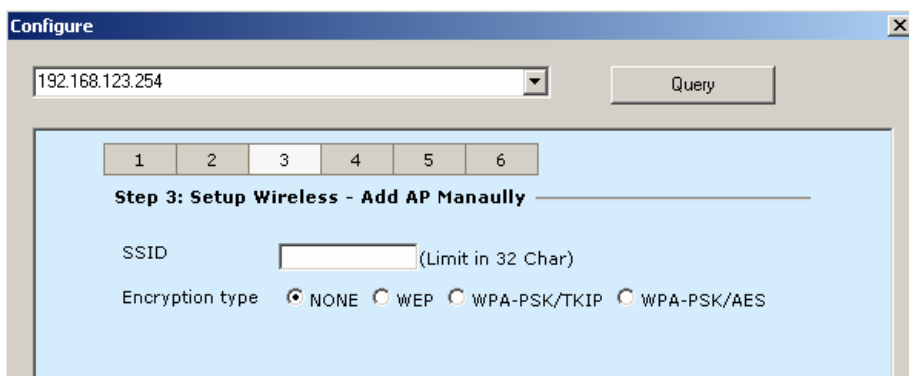
You have two ways to do this job. One is searching the available AP that AirLive WMU-6500FS could get.



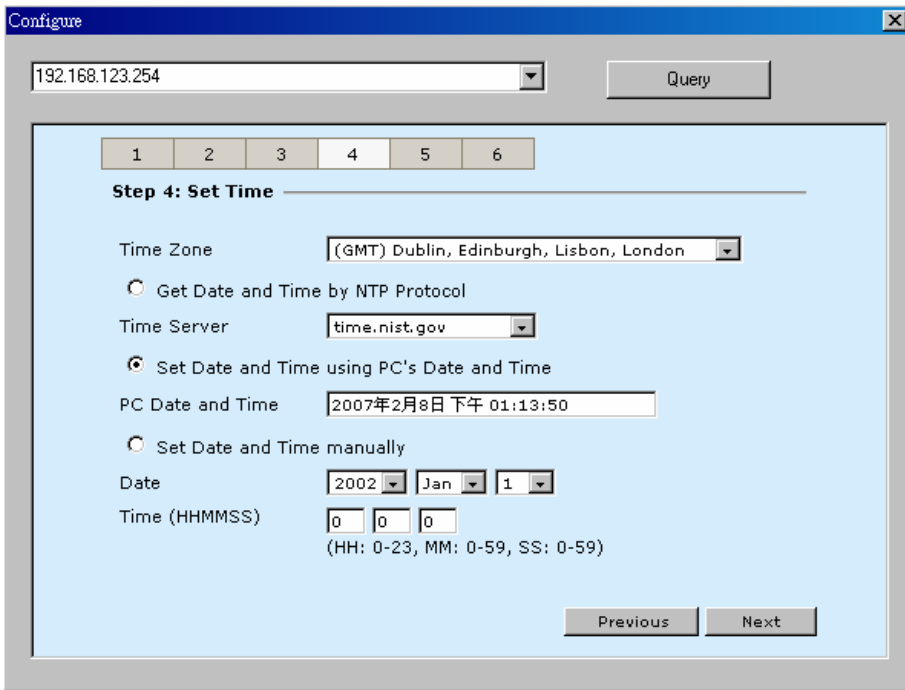
After finish searching, you could select the AP that you want AirLive WMU-6500FS to connect to.



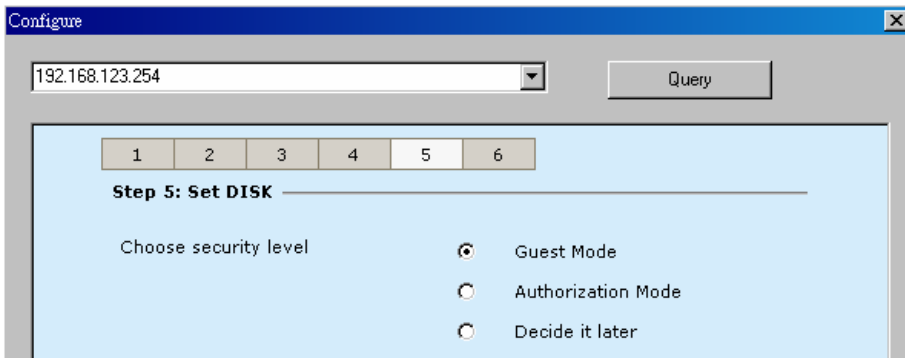
The other way to add an AP is setting the SSID manually.



Step 4: Next, you have three ways to set time for AirLive WMU-6500FS. You could sync time with NTP server or your PC, or set time manually.



Step 5: Here you will see three options of security level. The “**Guest Mode**” means everyone can access any data in your hard disk drive. The “**Authorization Mode**” means only authorized user can access data which is stored in their home directory. Or you can decide the security level later if you don’t have any idea yet.



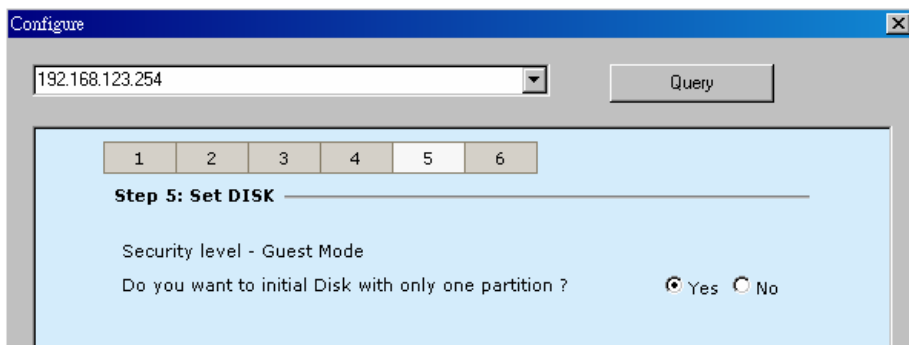
If you choose **Decide it later**, the AirLive WMU-6500FS won’t do any change to your hard disk. So you can keep all your data which has been stored in the hard disk.

If you choose **Guest Mode**, it’s not necessary to initial your hard disk drive. As a result, if you use a whole new hard disk, please select “**Yes**”. If you already have data in this hard disk, you might want to select “**No**”. This option would format your hard disk to one partition if you select “**Yes**”.

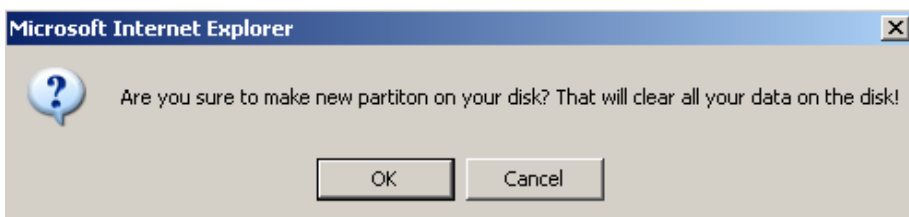
NOTE. You can get better performance after disk initialization.

WARNING:

The format process will erase all your data which has been stored in your hard disk drive.



If you select “Yes”, the AirLive WMU-6500FS would ask you one more time to confirm your decision.



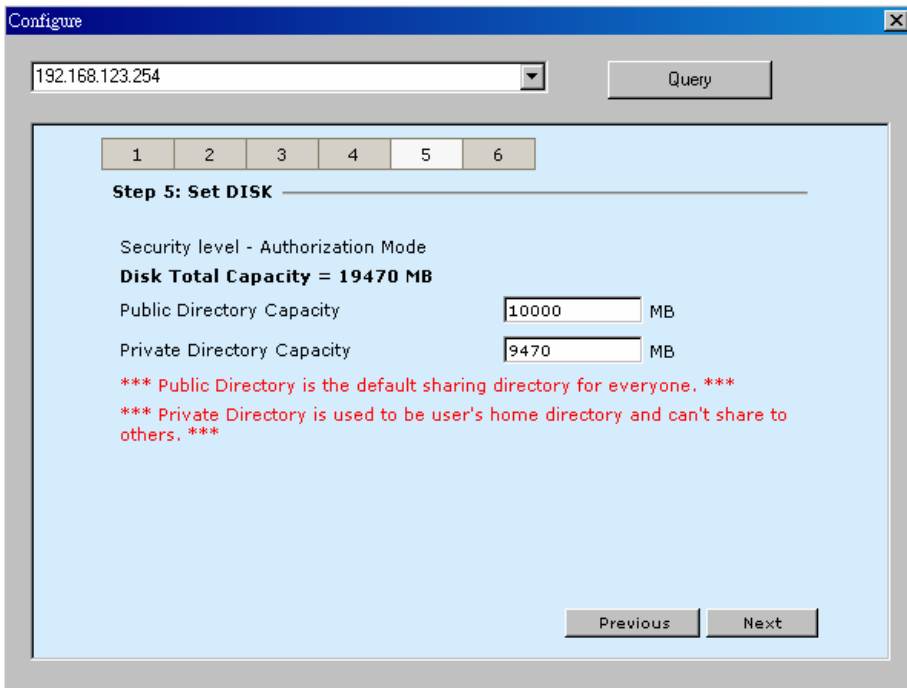
If you need to format disk, please wait the progressing bar become 100%.

WARNING:

Even there is only one partition in your hard disk, the AirLive WMU-6500FS will format your hard disk again if you press OK.

If you choose **Authorization Mode**, it's necessary to initial your hard disk drive. The public directory will store data which can be accessed by any user. But only authorized user can access data which is stored in their home directory in the private directory. Please indicate capacities for public directory and private directory separately. After you indicate capacity for one directory, the rest of capacity can be assign to the other directory automatically.

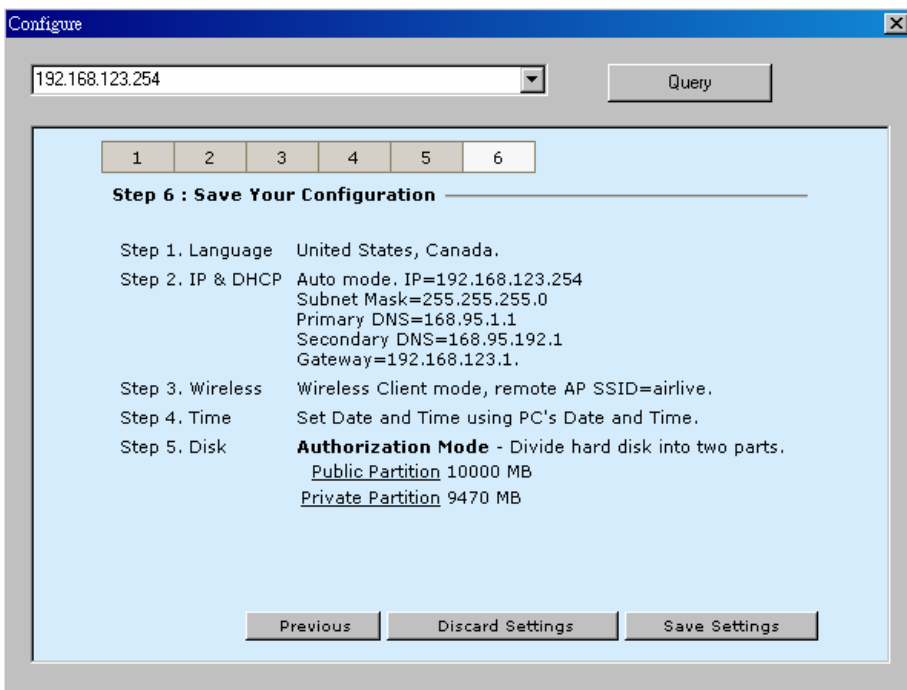
NOTE. The easy copy button in the front panel is going to copy folders/files from USB drive to public directory while you activate authorization mode.



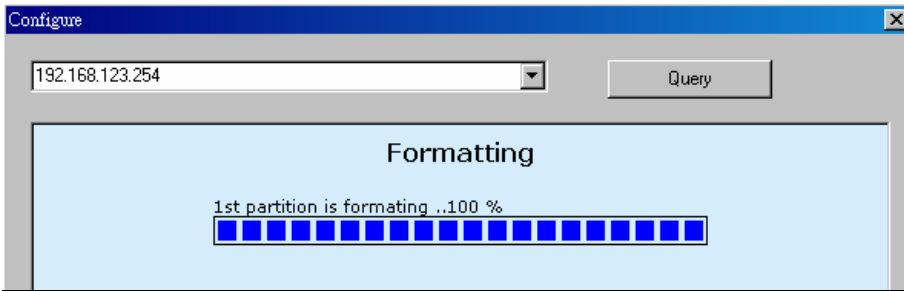
WARNING:

The initialization will erase all your data which has been stored in the hard disk.

Step 6: This page will show the configurations that you choose, please check your settings again before saving. Click “**Discard Settings**”, then you would return to the first page and without saving any changes. If you want to change any setting, please click “**Previous**” button to go back to previous page. Finally, if everything is okay, click “**Save Settings**” to save your new settings.



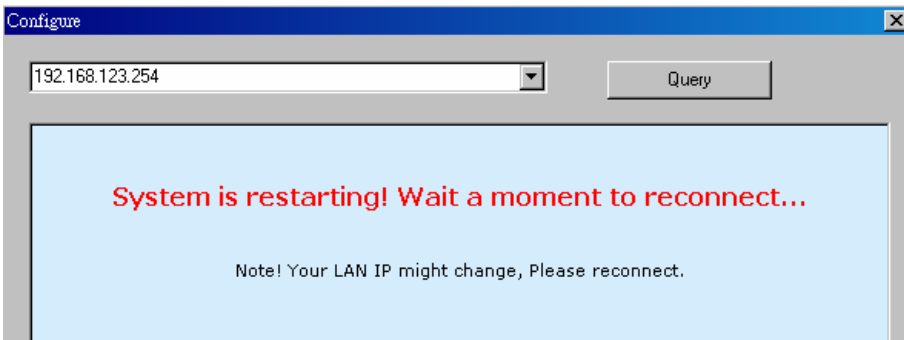
If you choose to initialize or format hard disk, please wait the progressing bar become 100%.



WARNING:

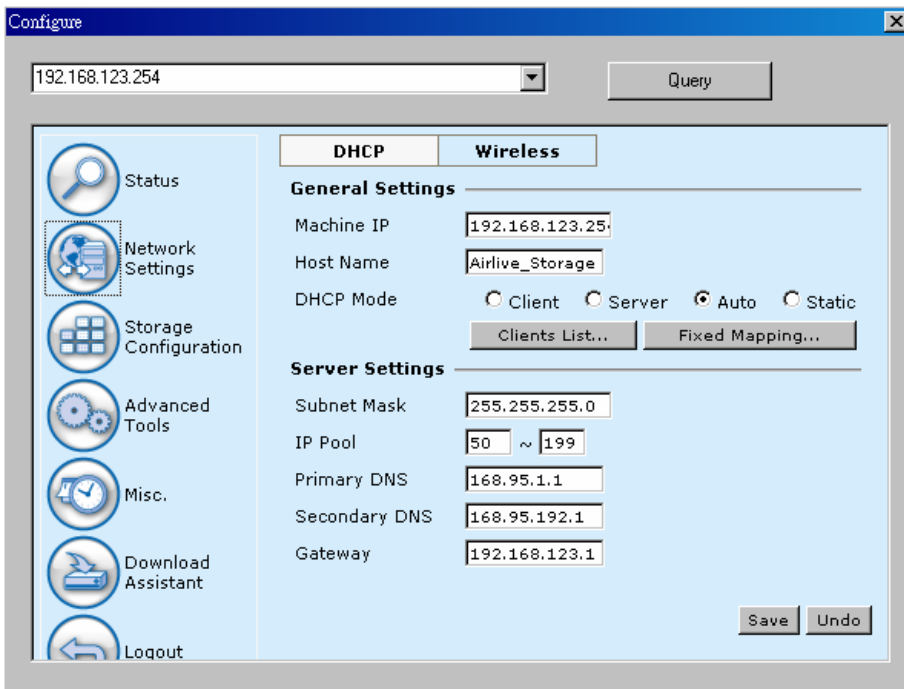
Do Not press any button or power off the AirLive WMU-6500FS when the format is in progress.

After everything is done, system would reboot automatically. Please wait 30 seconds at least for system restarting.



3.2 Network Settings

3.2.1 DHCP Setting

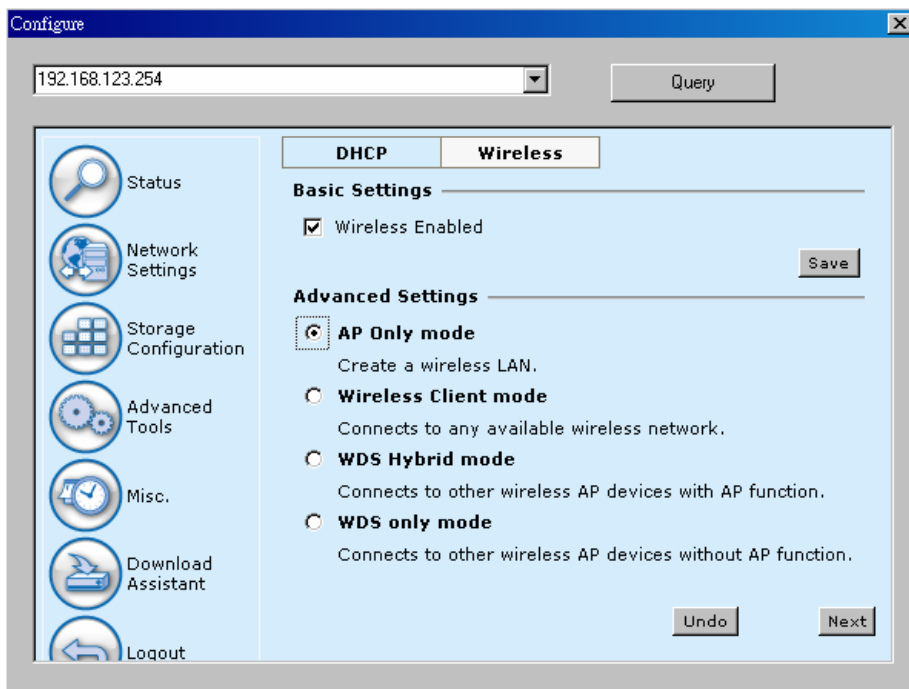


Following sections describe the various DHCP settings.

- General Settings: default machine IP is **192.168.123.254**. This IP address must be unique on your network. You can change it if necessary. This setting is only used for DHCP server mode, and Static IP mode. Host name is the identification of AirLive WMU-6500FS when you browse it in Microsoft My Network Places.
- DHCP Mode: The default mode is “**Auto**”
 - ✓ Client: If you have a DHCP server on the network, set this option to receive an automatic IP address and subnet mask assignment.
 - ✓ Server: The AirLive WMU-6500FS will become a DHCP server on the network.
 - ✓ Auto: Select this option to let AirLive WMU-6500FS send out a DHCP request during boot up. If you have another DHCP server on the network, the AirLive WMU-6500FS will receive an automatic IP address and subnet mask assignment. If there is no DHCP server on the network, the AirLive WMU-6500FS will become a DHCP server on the network.
 - ✓ Static: You can manually configure the IP address and subnet mask of AirLive WMU-6500FS.
- Server Settings: (This information would be used when you choose Server mode or Static mode.)
 - ✓ Subnet Mask: subnet mask of your network.
 - ✓ IP Pool: decide the IP address range that DHCP server will offer.
 - ✓ Primary DNS / Secondary DNS: This feature allows you to assign DNS Servers. You could get this information from your ISP.
 - ✓ Gateway: The gateway IP address would be the IP address of an alternate gateway. If you do not know how to setup the gateway, please contact your network administrator or ISP.
 - ✓ Client List: When AirLive WMU-6500FS is as a DHCP server, here will show some information of DHCP client.
 - ✓ Fixed Mapping: DHCP server can assign the same IP address to a certain “MAC address”.

3.2.2 Wireless Setting

Select the **Wireless** option in the Network Settings page.



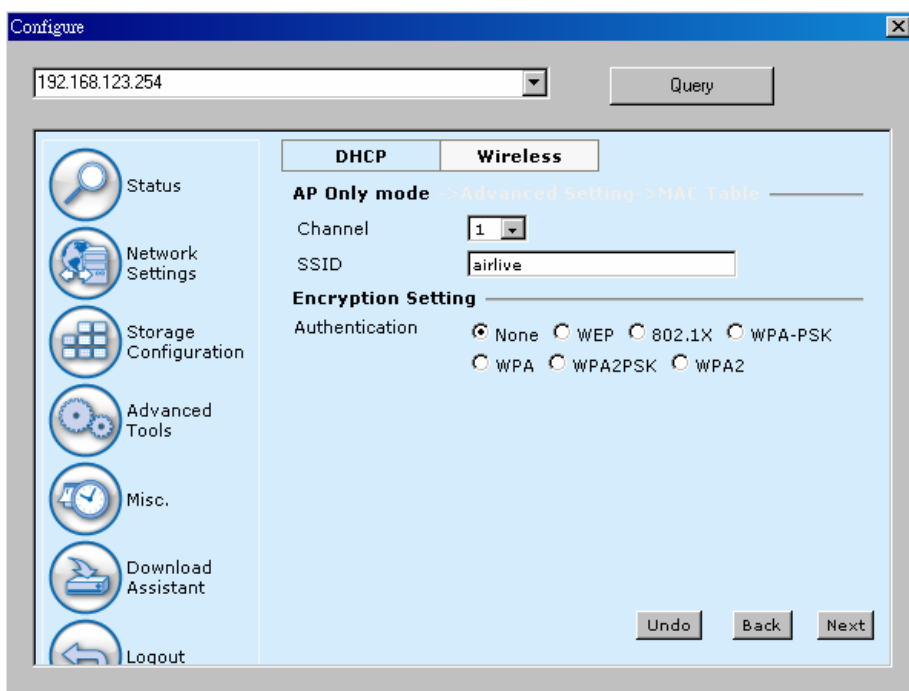
Following information will let you know the current wireless operation status.

- Basic Settings: allow you to enable or disable wireless function.
- Advanced Settings: the AirLive WMU-6500FS provides four wireless modes to select. Please refer to the following section to check details of each wireless mode separately.

Choose the wireless mode you need, and click “**Next**” button to setup detail items.

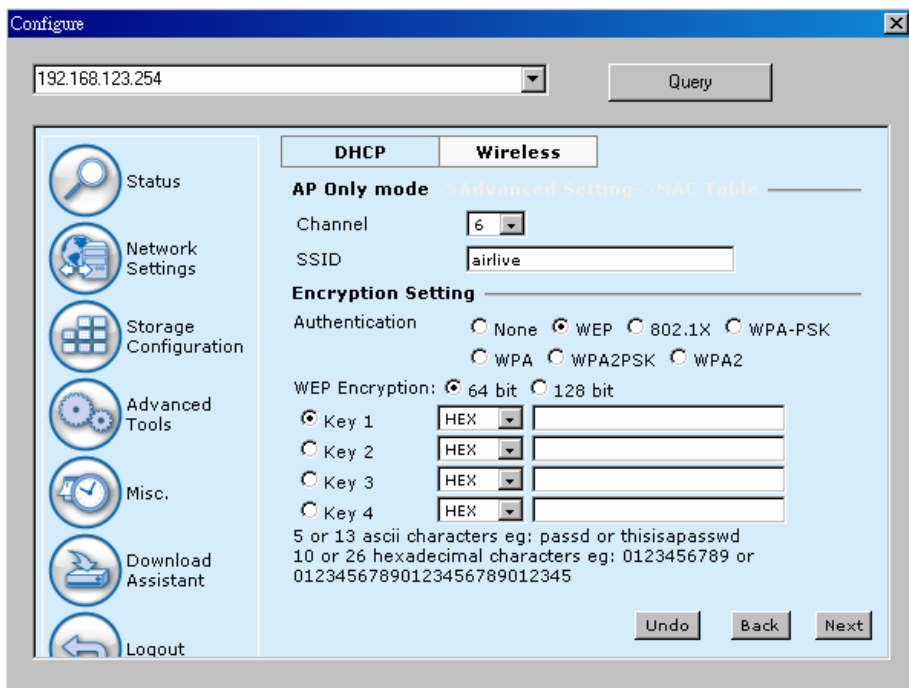
3.2.2.1 Wireless AP only

When you are in the **AP Only mode**, you can setup the basic wireless functions as below.

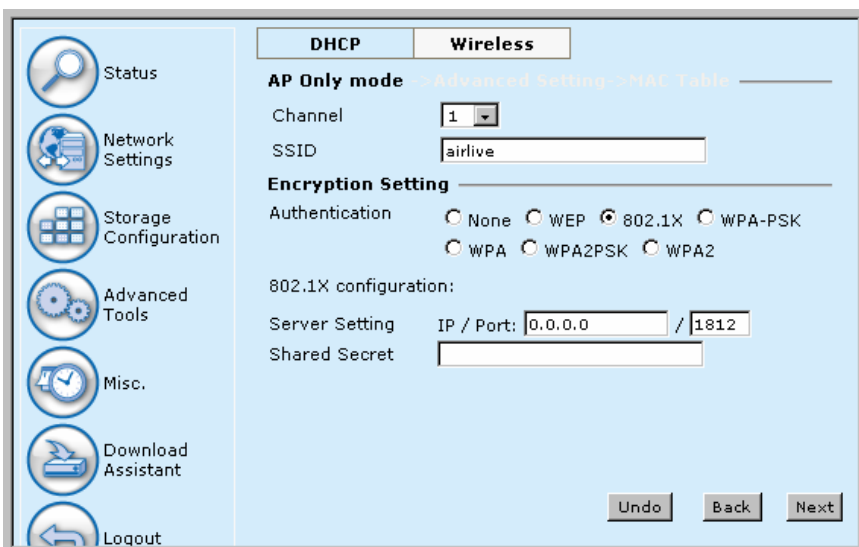


Wireless AP Setting:

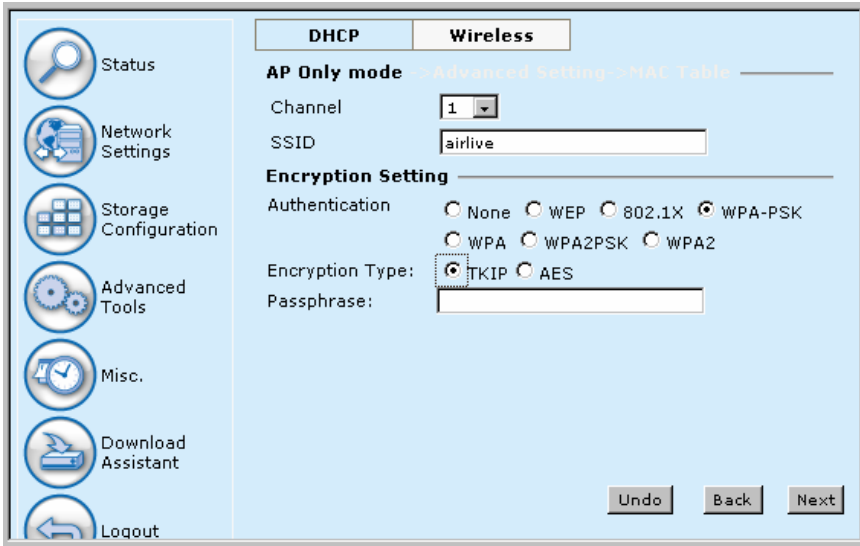
- Channel: choose the radio channel number. The default channel of AirLive WMU-6500FS is “1”. **Please DO NOT set the same channel with your existed wireless network.**
- SSID: the SSID identifies a specific wireless LAN. Before associating with a particular wireless LAN, a station must have the same SSID as the access point. The default SSID setting is “airlive”.
- Authentication: authentication ensures that digital data transmissions are delivered to the intended receiver. This option enables you to set the authentication method for various encryption schemes.
- WEP Encryption: select “64” or “128” bits for encryption method to protect your data by encrypting it. The WEP key can be 5(or 13) ASCII characters or 10(or 26) hexadecimal characters based on whether you select 64 bit or 128 bit WEP encryption.



- 802.1X: IEEE 802.1x authentication can be done by using an external RADIUS server. You need to input the IP address of RADIUS server and Shared Secret. Please refer to FAQ in chapter 8 to get more detailed information.

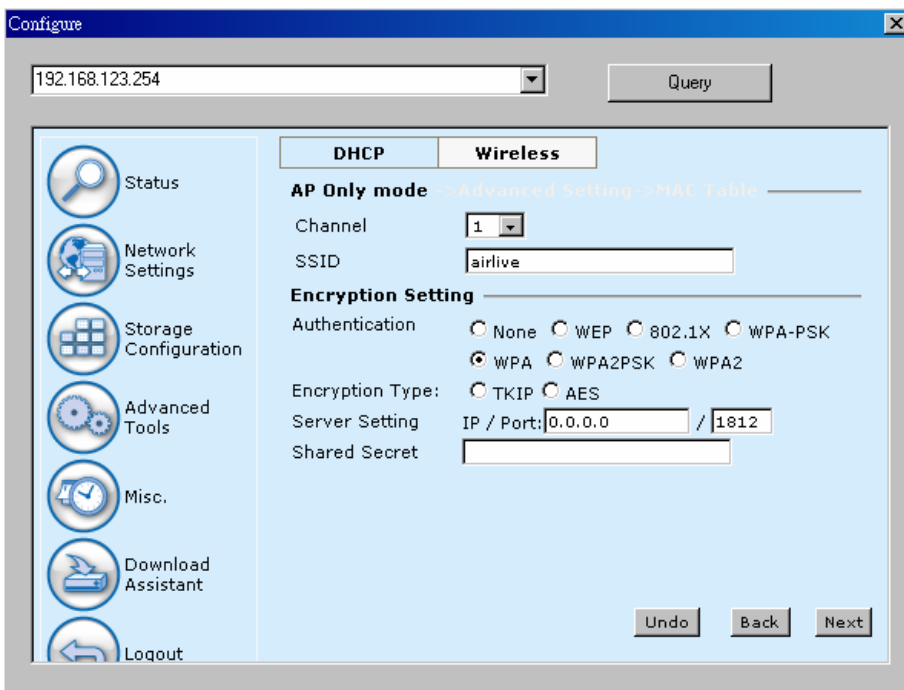


- WPA-PSK, WPA2-PSK: AP and Client need to use identical Pre-shared key (PSK). Please choose TKIP or AES for encryption type, and then input 64 Hex key (0~F) or 8~63 ASCII characters.

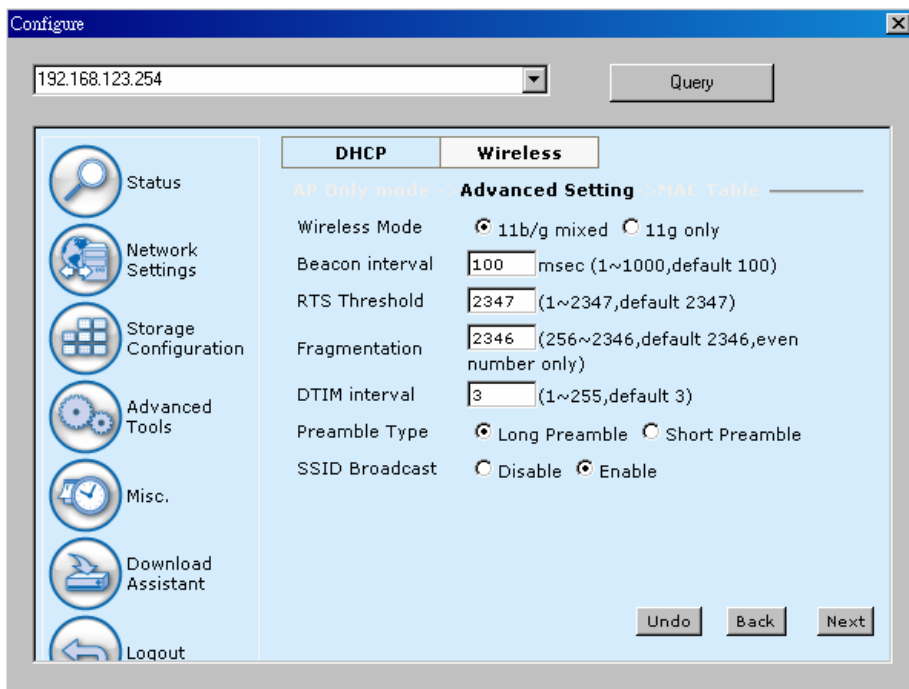


- WPA, WPA2: WPA applies IEEE802.1x and Extensible Authentication Protocol (EAP) to authenticate wireless clients using an external RADIUS server. Please input the IP address of RADIUS server and Shared Secret. Please refer to FAQ in chapter 8 to get more detailed information.

NOTE. This device can support WPA version 1 and version 2.

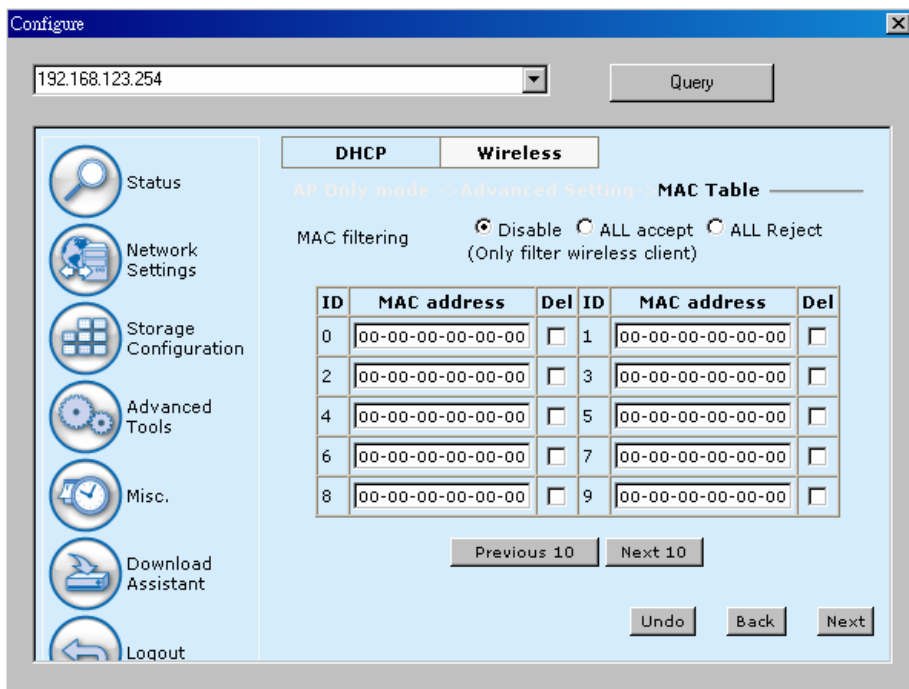


Advanced Setting:



- Wireless mode: **11b/g mixed** can let 11g or 11b computers both exist on the network, but the speed will be reduced. Select **11g only** for maximum speed, but no 11b users will be allowed on the network.
- Beacon interval: This represents the amount of time between beacon transmissions. The interval tells receiving devices on the network how long they can wait in low-power mode before waking up to handle the beacon. Beacons are packets sent by an Access Point to synchronize a wireless network. Specify a Beacon interval value between 1 and 1000. The default value is set to 100 milliseconds.
- RTS Threshold: The RTS threshold specifies the packet size of an RTS transmission. This helps control traffic flow through an access point, especially one with many clients. The setting value range is from **1 to 2347**, and default value is set to **2347**.
- Fragmentation: In a network, the maximum size or length of a fragment is determined by the protocol used to transport the data. This value should remain at its default setting of **2346**. If you experience a high packet error rate, you may slightly decrease your "Fragmentation" value within the value range of **256 to 2346, even number only**. Setting the Fragmentation value too low may result in poor performance.
- DTIM interval: A Delivery Traffic Indication Message (DTIM) is a countdown informing clients of the next window for listening to broadcast and multicast messages. When the Access Point has buffered broadcast or multicast messages for associated clients, it sends the next DTIM with a DTIM Interval value. AP clients hear the beacons and awaken to receive the broadcast and multicast messages. Enter a value from **1 to 255** for DTIM. The default value for DTIM interval is set to **3**.
- Preamble Type: The Preamble Type defines the length of the CRC (Cyclic Redundancy Check) block for communication between the Access Point and roaming wireless adapters.
- SSID Broadcast: **Enable** or **Disable** a SSID broadcast. When enabled, the SSID of AirLive WMU-6500FS is sent to wireless enabled devices on the LAN. This feature is enabled by default.

Then press "**Next**" button, you could see the Wireless MAC Filtering setting.



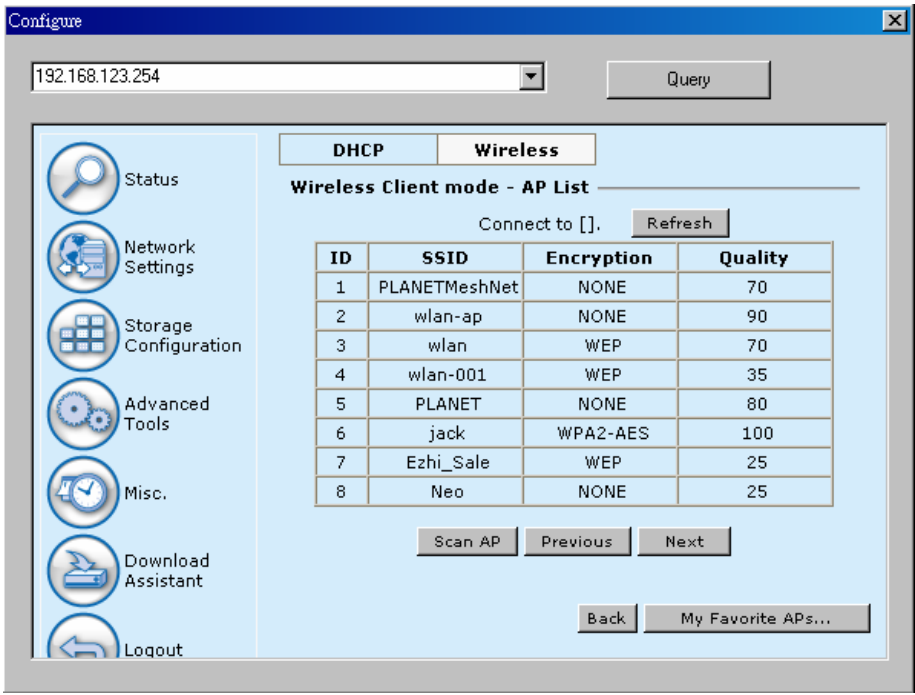
The default setting is “**Disable MAC filtering**”, every wireless client could connect to this AirLive WMU-6500FS. When you select “**ALL accept**”, the wireless clients with the MAC addresses you enter below will be accepted to connect to this AirLive WMU-6500FS, the others will be rejected. When you select “**ALL Reject**”, the wireless clients with the MAC addresses you enter below will be rejected to connect to this AirLive WMU-6500FS, the others will be accepted.

After finish configuration, press “**Next**” button to review all wireless settings. If everything is correct, then press “**Confirm**” button to save and take effect new settings.

3.2.2.2 Wireless client mode

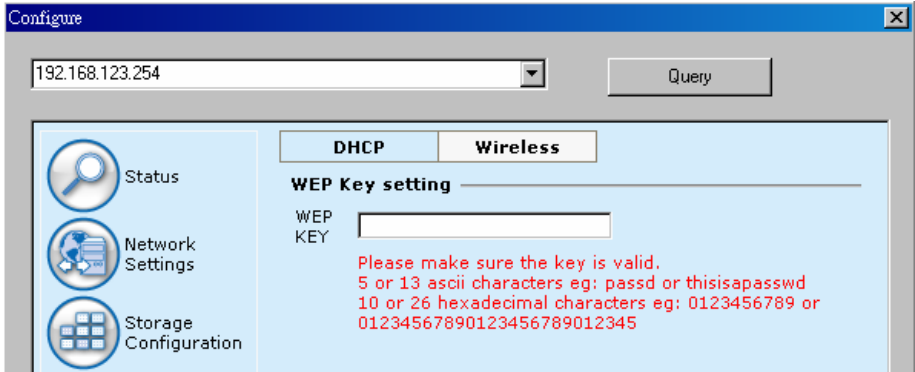
Select the “**Wireless Client mode**” and click “Next” button to setup under the Wireless client mode.

After entering the Wireless client mode setting, click the “**Scan AP**” to scan the existing AP in your environment. Then click the AP that you want to connect to.

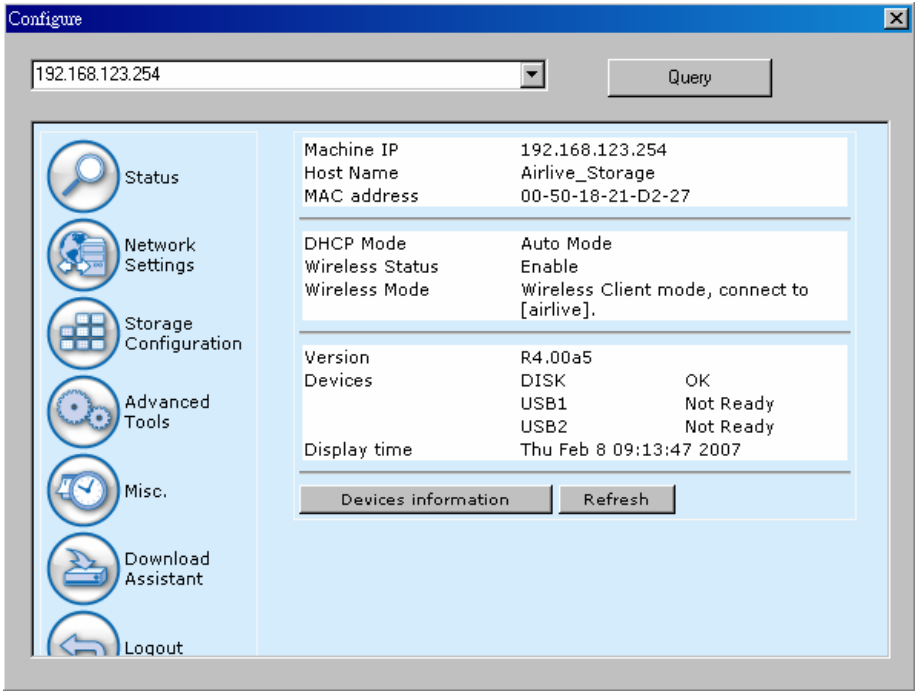


Input encryption keys if needed. Then press “**Connect**” button to connect.

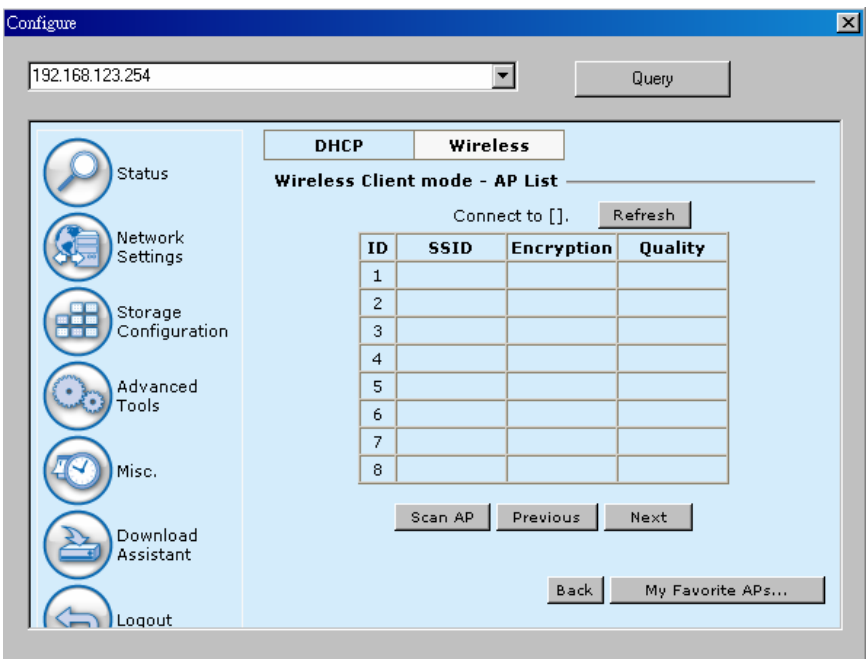
NOTE. The encryption method is decided by remote AP.



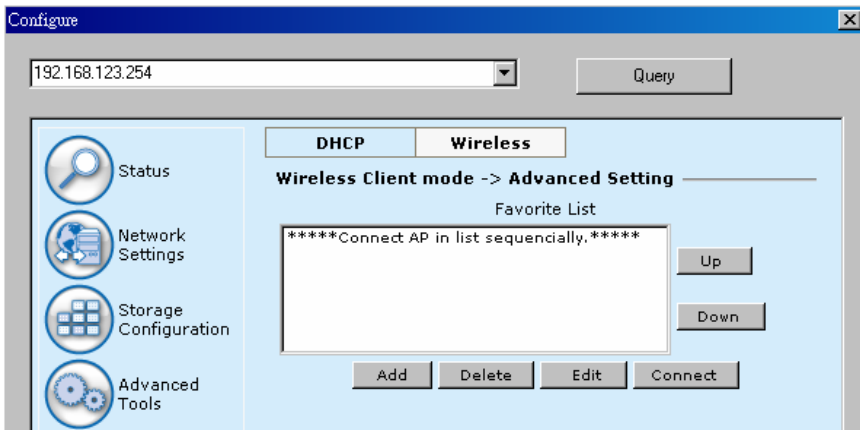
Then AirLive WMU-6500FS will save configurations and reboot automatically. After that, you can check the wireless status in the status page.



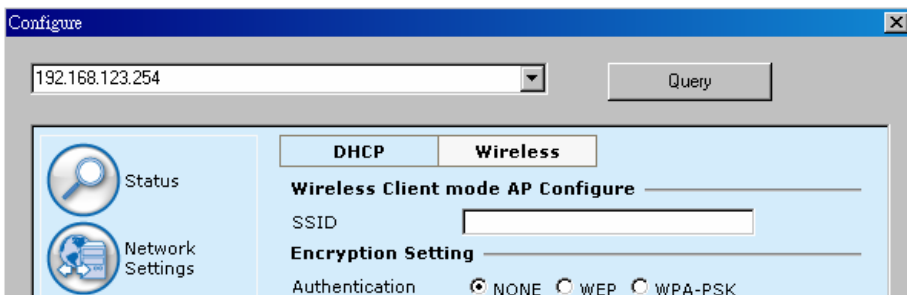
Besides selecting AP from available list, you can also add AP manually. Press **“My Favorite APs”** in the wireless configuration page.



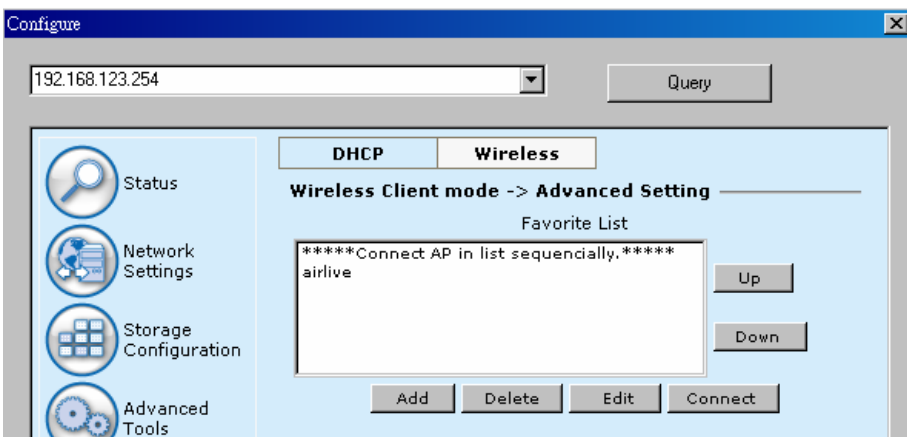
Press **“Add”** button to add a remote AP.



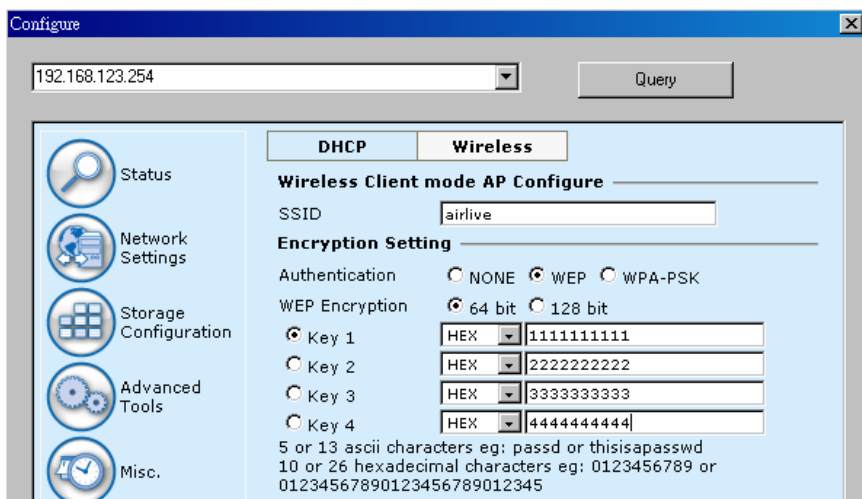
Input the SSID information of remote AP. You may also need to input correct encryption keys when remote AP activates encryption mechanism. Then press “**Save**” to save the configuration.



You can also modify attributes of existed AP. Go to wireless “**My Favorite APs**” page, choose the AP that you want to modify, then press “**Edit**” button.

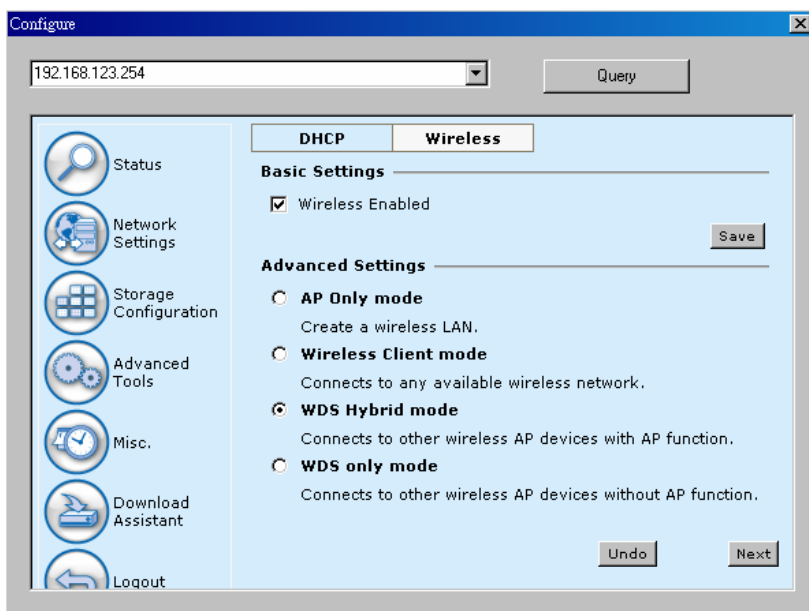


When you finish all the modification, press “**Save**” button to save changes.

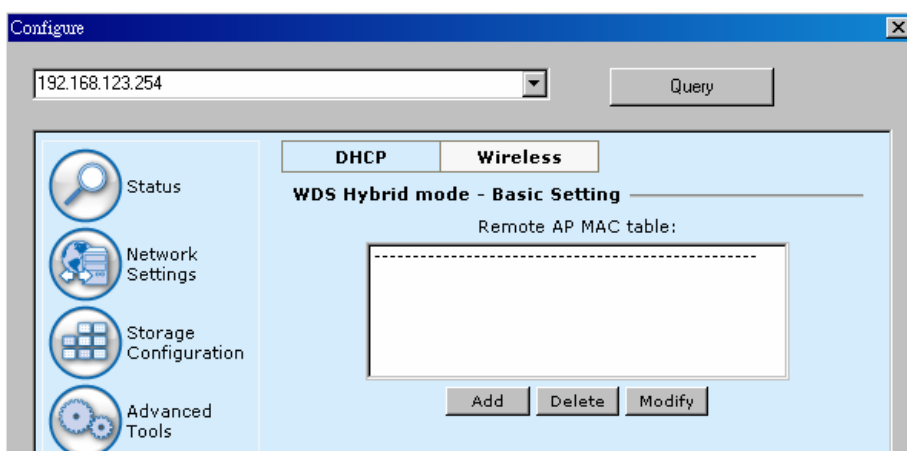


3.2.2.3 WDS Hybrid mode

Select the “WDS Hybrid mode” and click “Next” to set up.

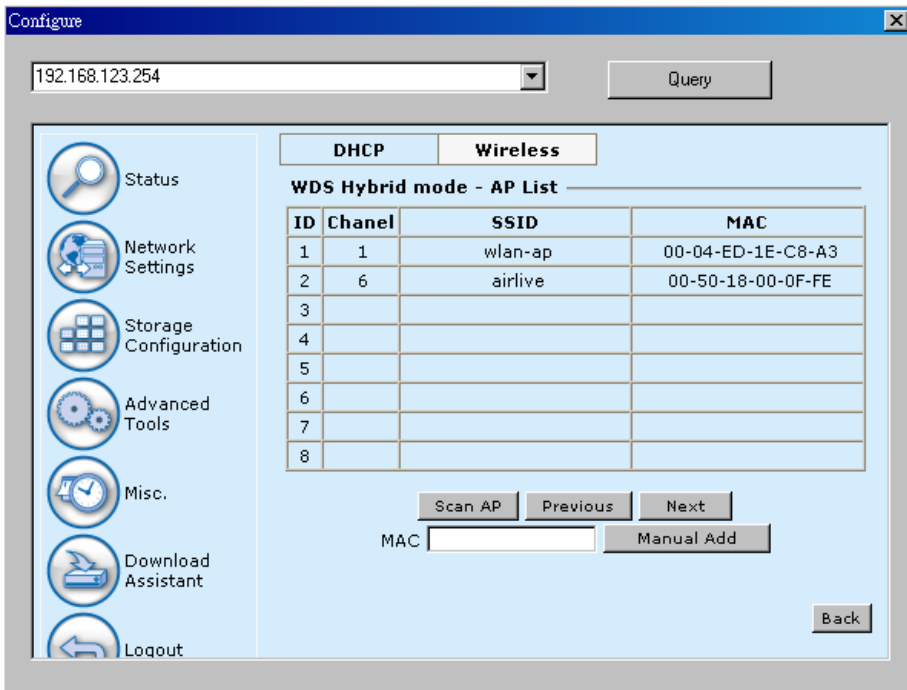


After entering the WDS Hybrid mode setting, click “Add” to set up.

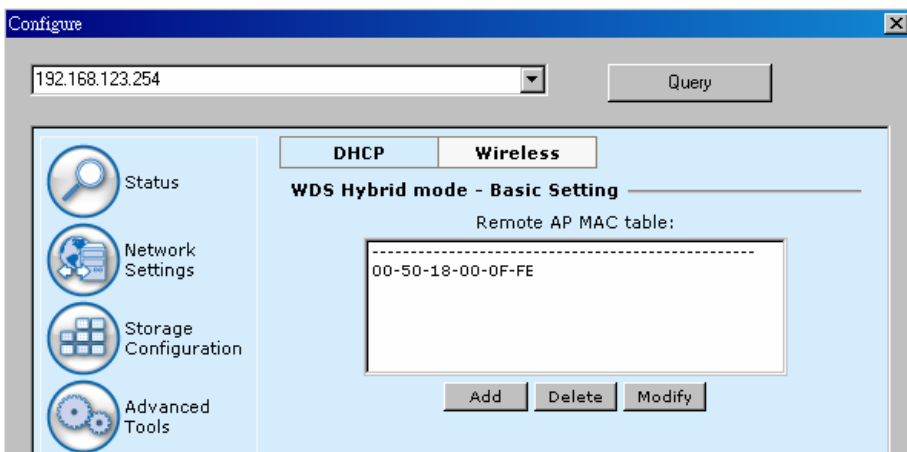


You can select the remote AP from AP list, or you can also input the MAC address of remote AP manually.

NOTE. The channel of AirLive WMU-6500FS and remote AP must be the same.

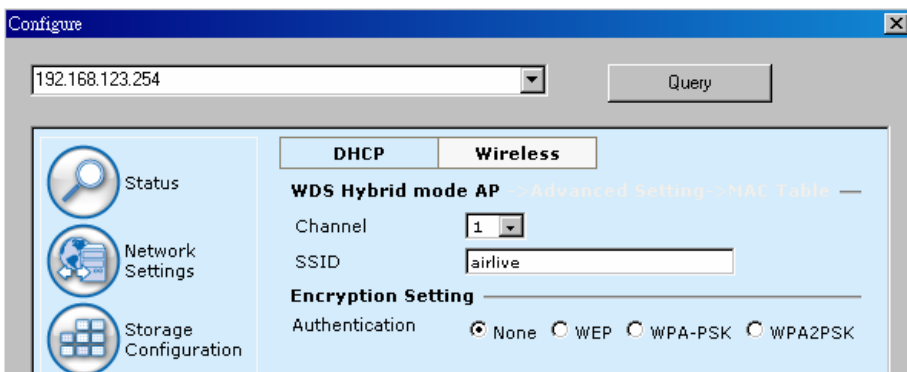


After indicating MAC address of remote AP, press “**Next**” to continue.



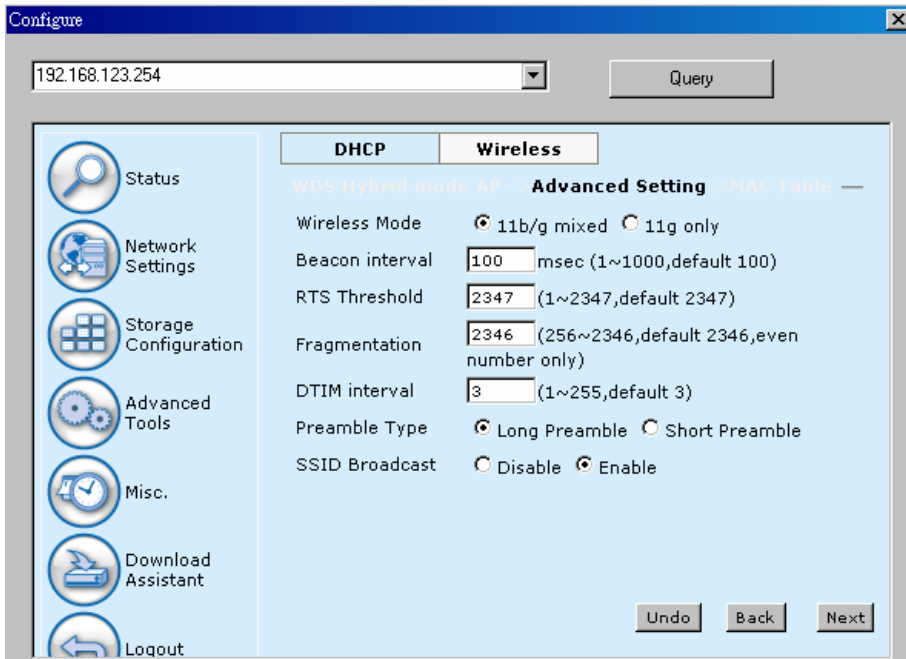
Input information of wireless channel, SSID, and encryption method of AirLive WMU-6500FS. Then press “**Next**” to continue.

NOTE. The wireless channel must be same as remote AP.



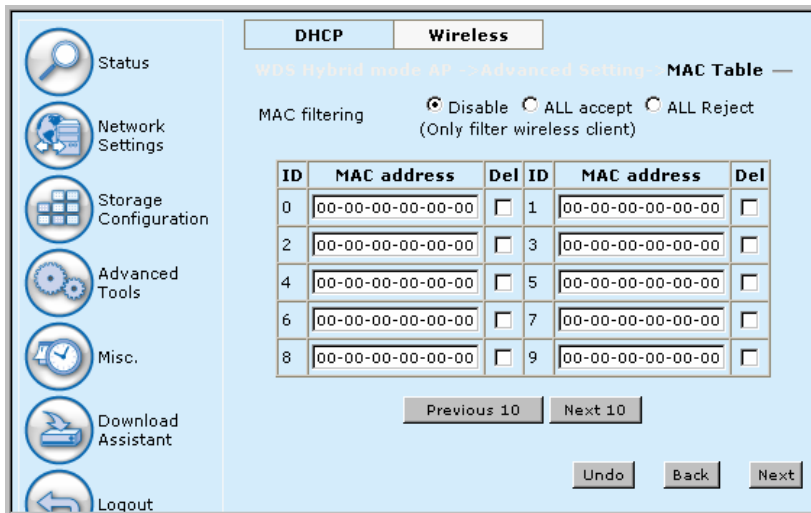
You can keep the original setting of this page, and then press “**Next**”.

NOTE. Please refer to 3.2.2.1 to review the meanings of this page.

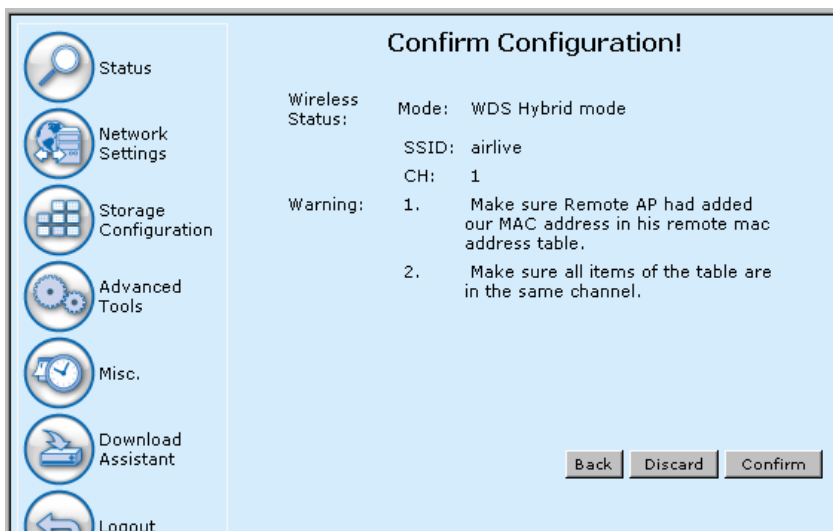


Edit wireless MAC Filtering setting, and then press “Next”.

NOTE. Please refer to 3.2.2.1 to review the meanings of this page.

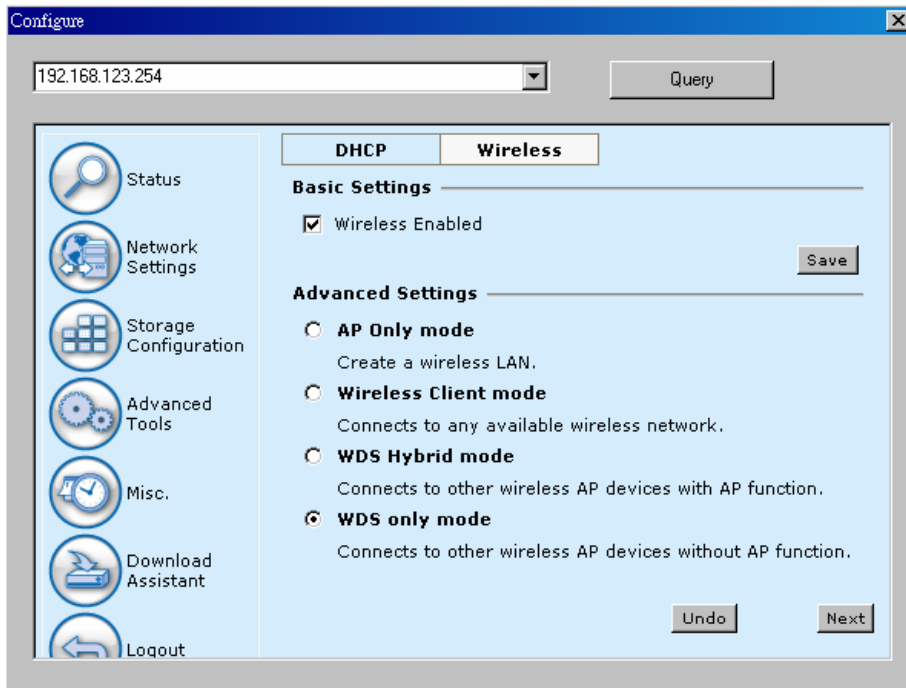


Finally, you could see the confirm page. If every setting is correct, just press “Confirm” to save all configurations.

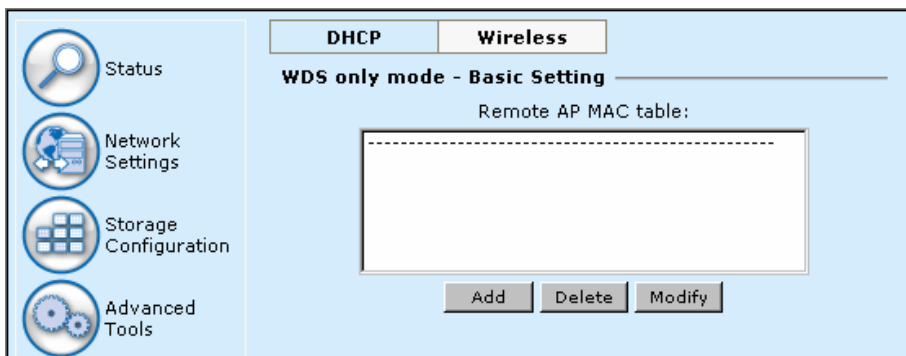


3.2.2.4 WDS only mode

Select the **“WDS only mode”**, and click **“Next”** to set up.

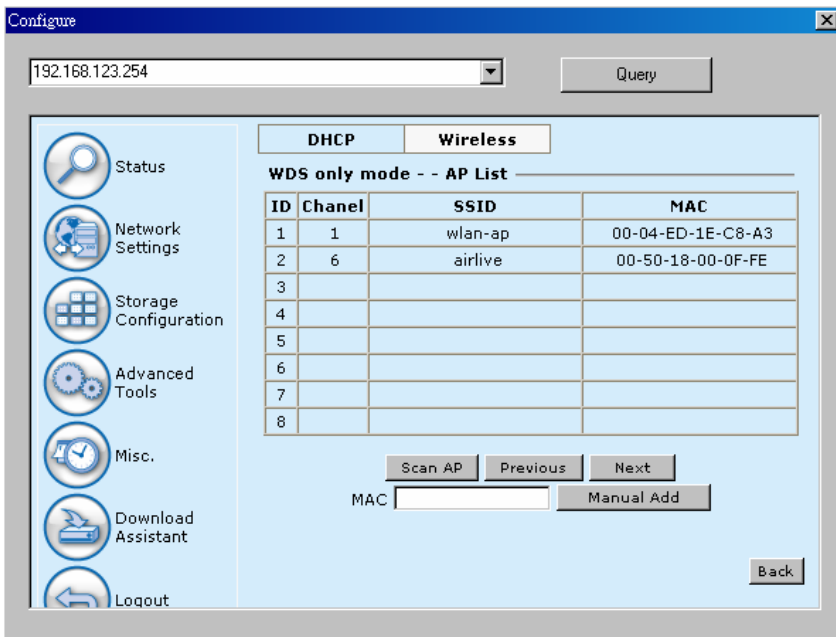


After entering the WDS Only mode setting, click **“Add”** to set up.

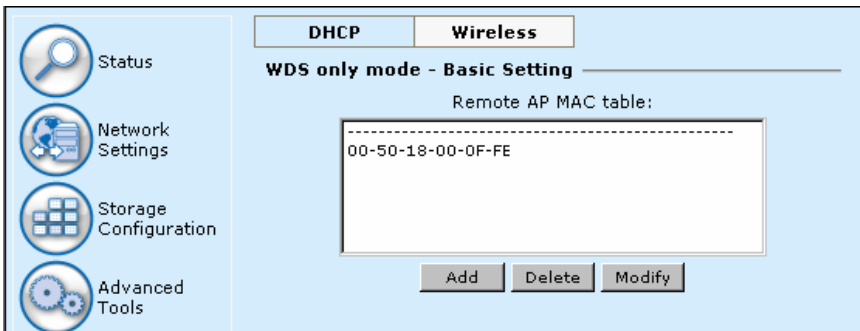


You can select the remote AP from AP list, or you can also input the MAC address of remote AP manually.

NOTE. The channel of AirLive WMU-6500FS and remote AP must be the same.

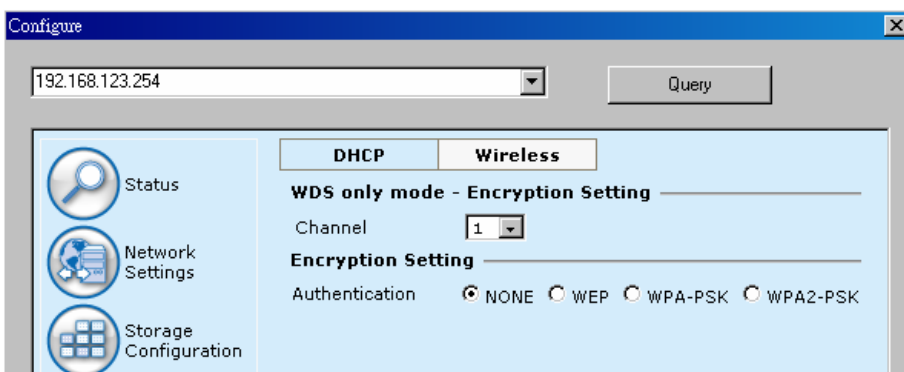


After indicating MAC address of remote AP, press “**Next**” to continue.

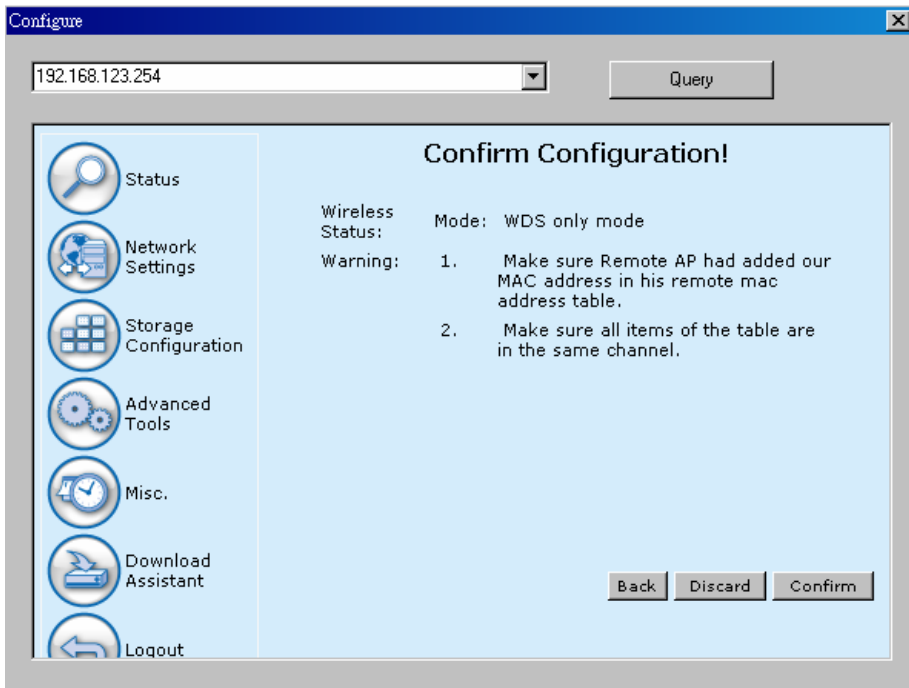


Input information of wireless channel and encryption method of AirLive WMU-6500FS. Then press “**Next**” to continue.

NOTE. The wireless channel must be same as remote AP.



Finally, you could see the confirm page. If every setting is correct, just press “**Confirm**” to save all configurations.



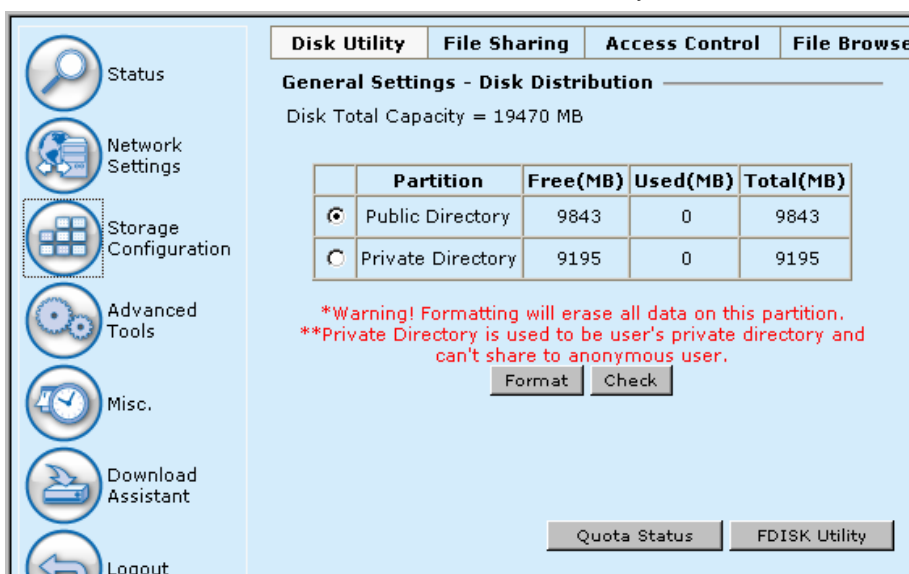
Chapter 4: Storage Configuration

In this section, you will know how to use the “**Disk Utility**” to configure the hard disk setting. Besides, this chapter will also show you how to finish configuration of **File Sharing**, and assign user access rules.

4.1 Disk Utility

Before using the hard disk, users need to format the hard disk first. Click “**Format**” button, and the AirLive WMU-6500FS will start to format the hard disk automatically. Once finishing the format, the AirLive WMU-6500FS will reboot automatically, and please reconnect the network in 30 seconds.

NOTE. The hard disk will be formatted as “**Ext2**” file system.

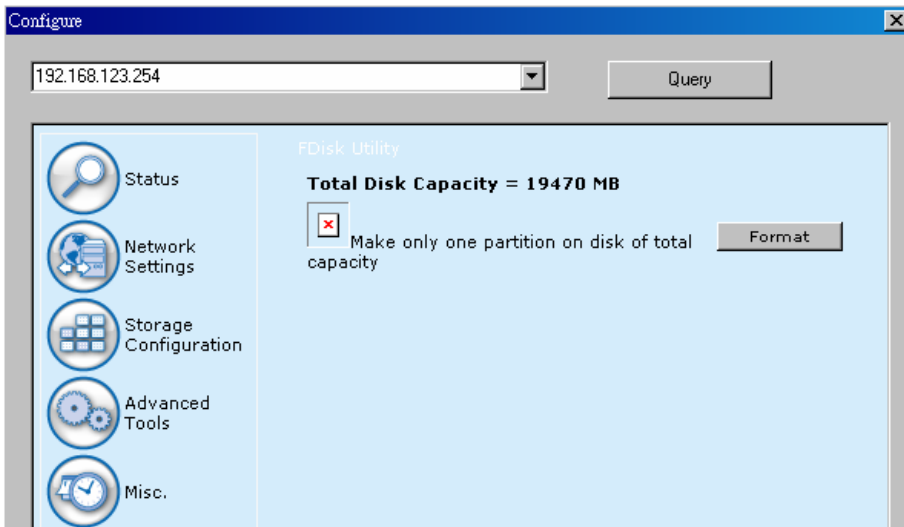


The other option is used for file checking. If you power off AirLive WMU-6500FS before normally shut down the

system, you are recommended to do this by pressing “**Check**” button.

Create a new partition

You could also format your hard disk to one partition by **FDISK Utility**. If you press “Format” button, then the AirLive WMU-6500FS will make only one partition with total capacity of internal hard disk, and format that partition.



WARNING:

All data in the hard disk will be ERASED after pressing format button. The hard disk is formatted to Ext2 file system. It can not be connected directly to a Microsoft Windows system without reformatting to other file system that Windows system can recognize.

4.2 File Sharing

In the configuration of File Sharing, you can see the following items:

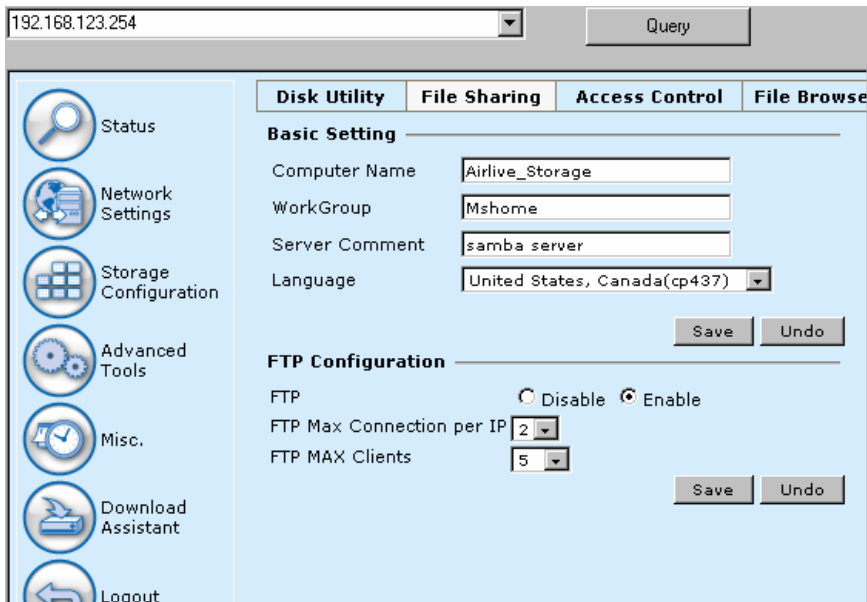
Computer Name: Host name is the identification of AirLive WMU-6500FS when you browse it in Microsoft My Network Places.

WorkGroup: Indicate a workgroup name of Microsoft Network Places.

Server Comment: The comment will be showed when you browse it in Microsoft My Network Places.

Language: Select which language will be used for folder/file name in the hard disk. Incorrect language setting may cause folder/file name unreadable.

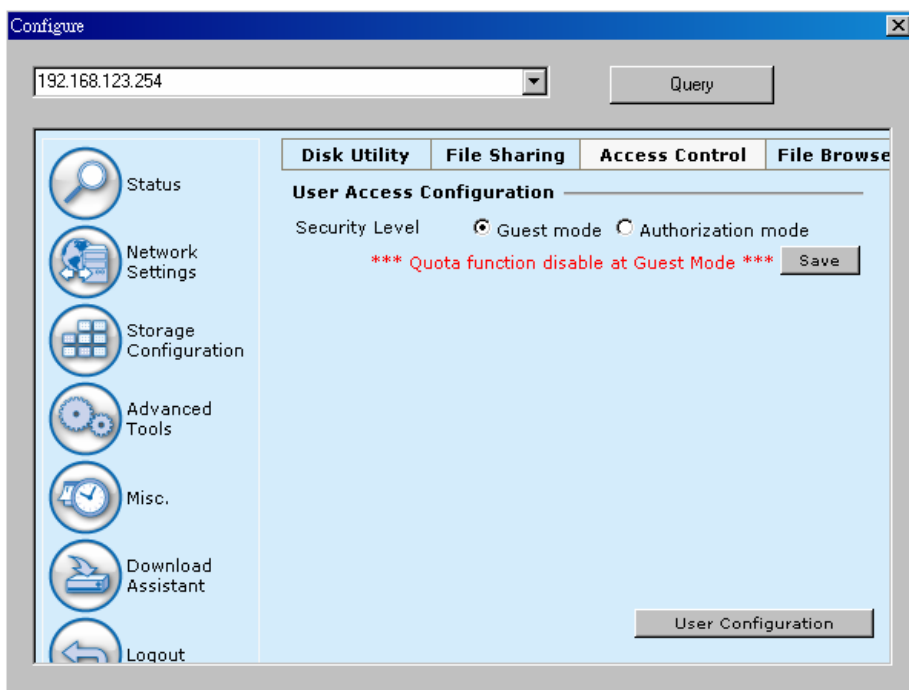
FTP Configuration: The FTP server is enabled by default, so you can also access AirLive WMU-6500FS by any FTP client utility. Besides, you can also set the maximum concurrent connections of FTP service. The maximum concurrent connections of FTP are limited to 20.



4.3 Access Control

The AirLive WMU-6500FS can provide two security levels of access control. One is **Guest mode**, it means anyone can access any data which has been stored in the hard disk. With Guest mode, you don't need to edit any user configuration and start to enjoy file sharing.

Note. The security level here is applied to file sharing of Microsoft Network Places and FTP service.

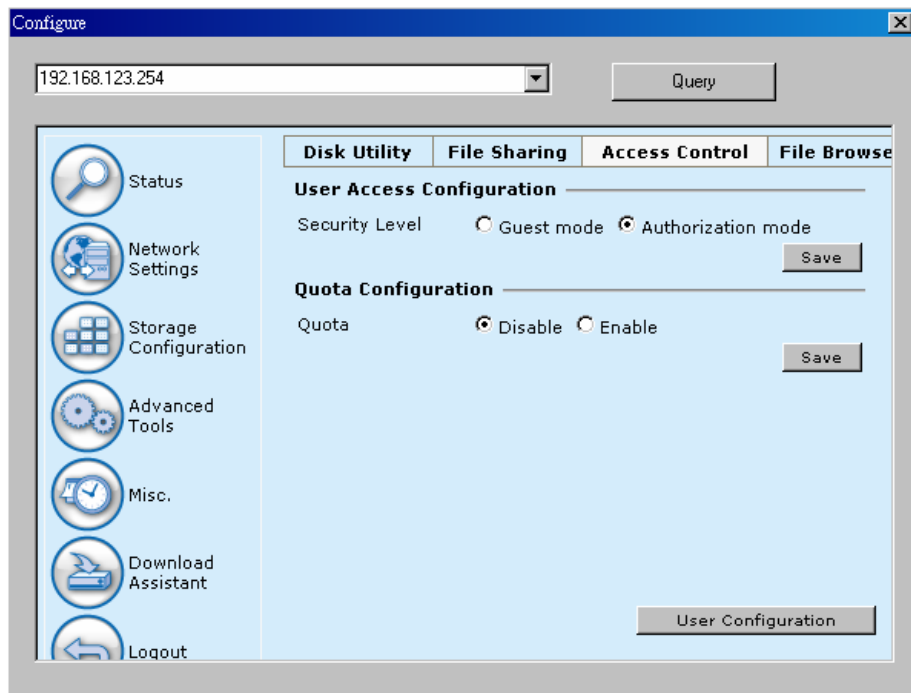


The other is **Authorization mode**, it means only authorized people can access certain folders in the hard disk. With Authorization mode, you need to edit user configuration to assign access right to privileged users. Besides, you can also assign quota limit for every user in the authorization mode.

Note. The hard disk needs to be initialized when you activate authorization mode by first time.

WARNING:

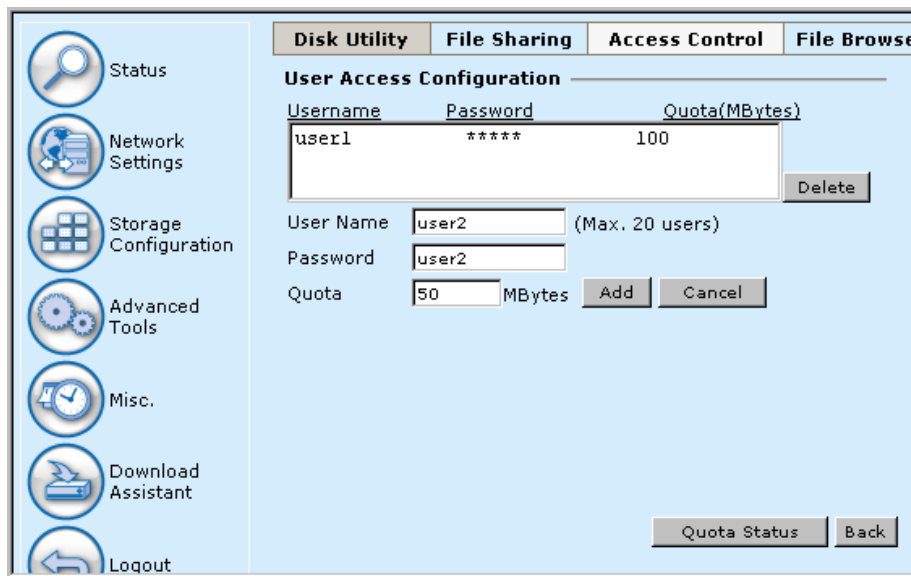
The initialization of hard disk will ERASE all data which have been stored in the hard disk.



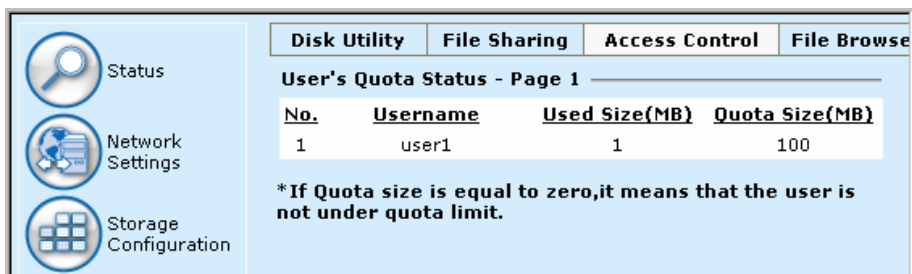
User Configuration

With user configuration, you can add or delete user account for privileged user. After you input user name, password, and quota information, just press “Add” button to add user account.

Note. The user information here is applied to file sharing of Microsoft Network Places and FTP service.

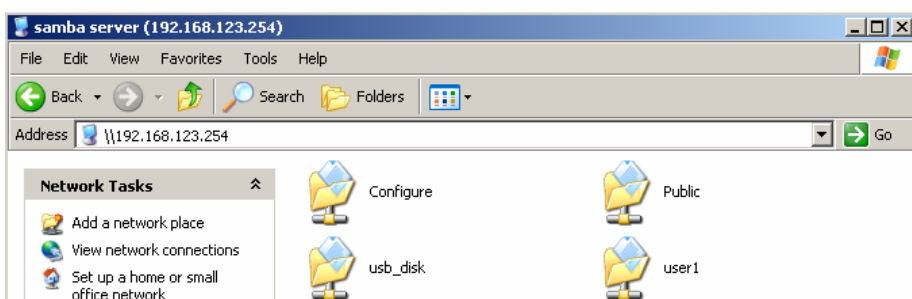


Besides, you can also check the status of used capacity for every user by pressing “Quota Status” button.

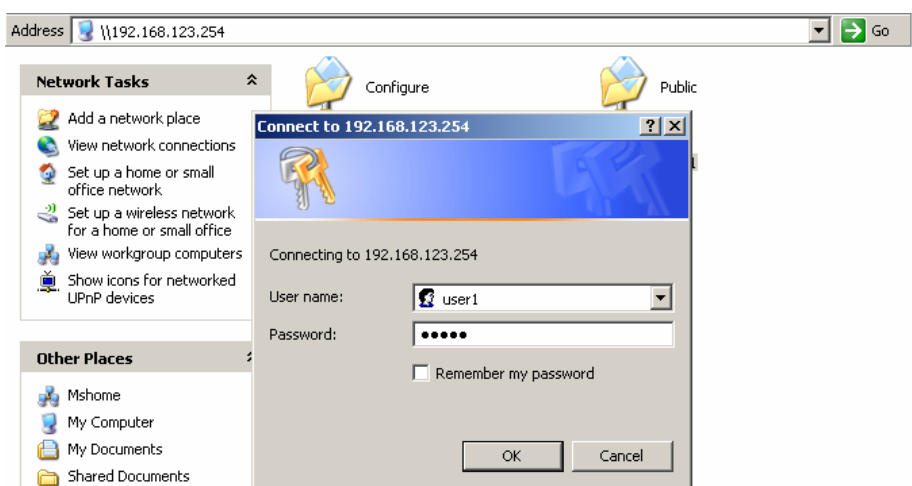


How to access folders in Authorization mode

If you have added a user account (named user1), then you will find the following folders when you browse AirLive WMU-6500FS by My Network Places in authorization mode.



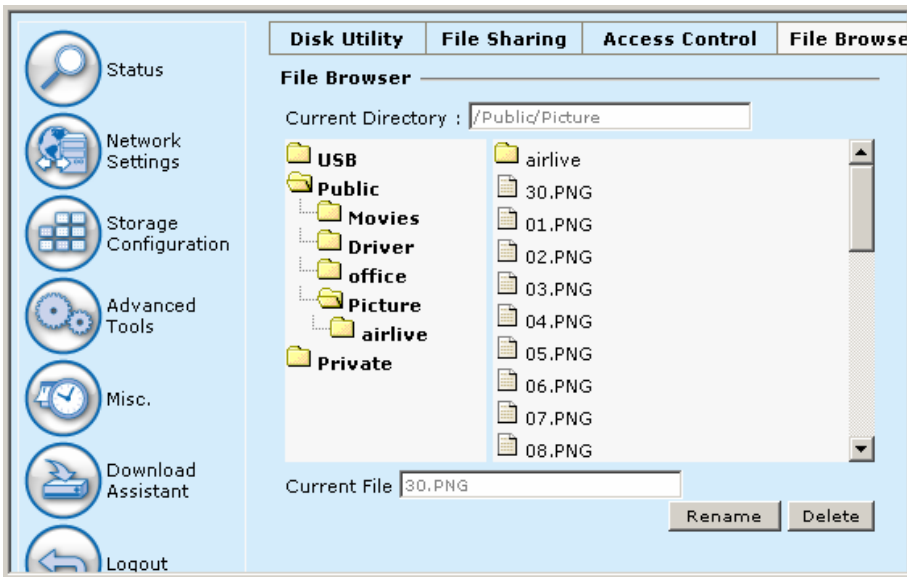
With this scenario, everyone can access data which is stored in folder **Public** and **usb_disk**. But only **user1** can access data which is stored in folder **user1**. If you try to access folder user1, an authentication window will pop-up.



4.4 File Browser

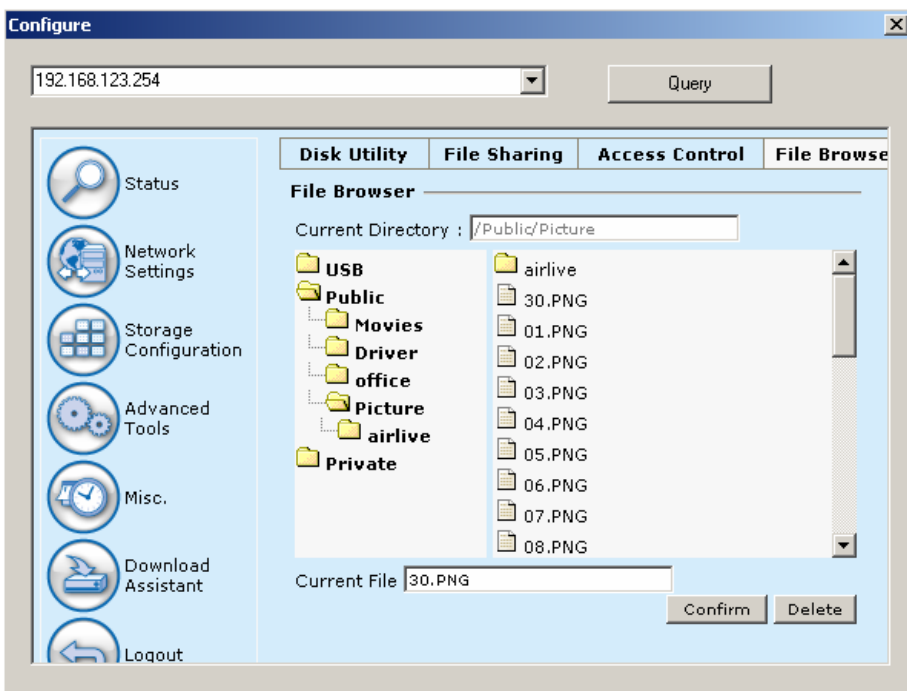
The AirLive WMU-6500FS provides a file browser to let users rename and delete folders/files easily. Especially when users can't rename or delete folder/file via FTP or Microsoft My Network Places successfully. For an example, users may download an "unrecognized" file, such as \$#@*2\$.avi from Internet, and they can't change the file name via My Network Places or FTP. In this case, users can correct the file name with this file browser.

Step 1: Select a folder/file that you want to change name or delete.



Step 2: Press the “Delete” button if you want to delete that file.

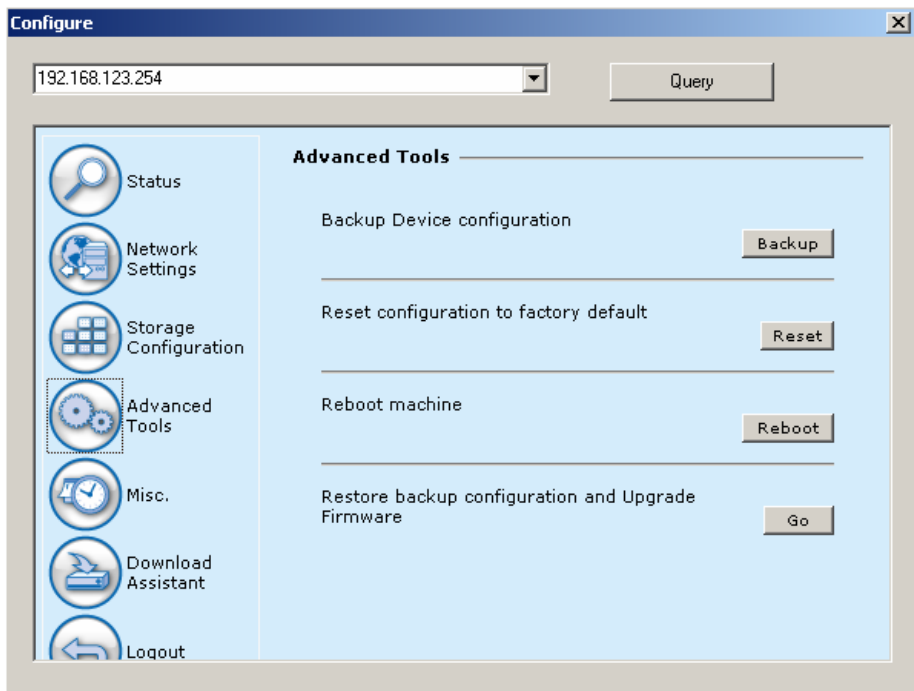
Step 3: Or press the “Rename” button if you want to rename the file name. The field of “Current File” will become editable when pressing “Rename” button. After inputting a new file name, just press “Confirm” button to finish changing.



Chapter 5: Advanced Tools

Click the **Advanced Tools** option on the left panel to display its submenus. The **Advanced Tools** menus enable you

to configure the various system settings. Refer to the following sections for more details.



5.1 Backup Configuration

This option enables you to backup current settings of AirLive WMU-6500FS.

5.2 Reset Configuration to Default

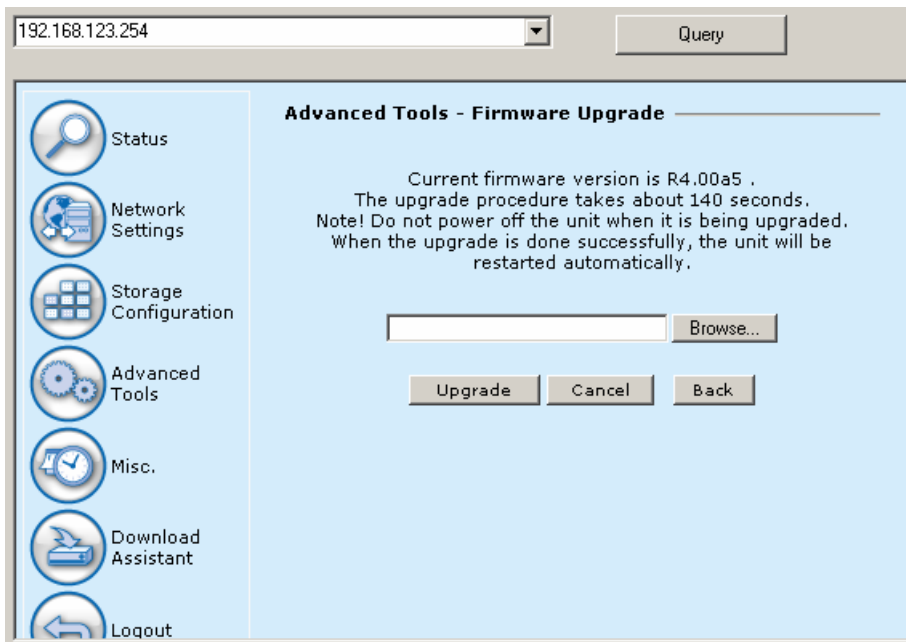
This option enables you to reset the AirLive WMU-6500FS to its default factory settings.

5.3 Reboot

This option enables you to reboot the device.

5.4 Firmware Upgrade

This option enables you to upgrade new firmware, or restore backup configuration to this product.



Chapter 6: MISC

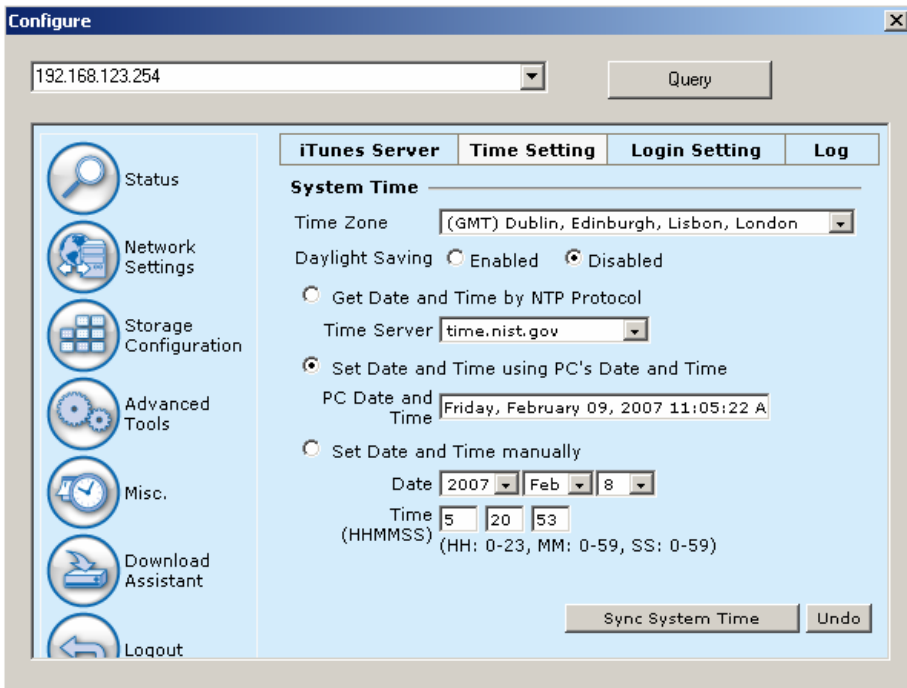
6.1 Time Setting

The **System Time** provides three options for you to select.

Get Date and Time by NTP Protocol: synchronize the date and time with Internet NTP server.

Set Date and Time using PC's Date and Time: synchronize the date and time with the computer.

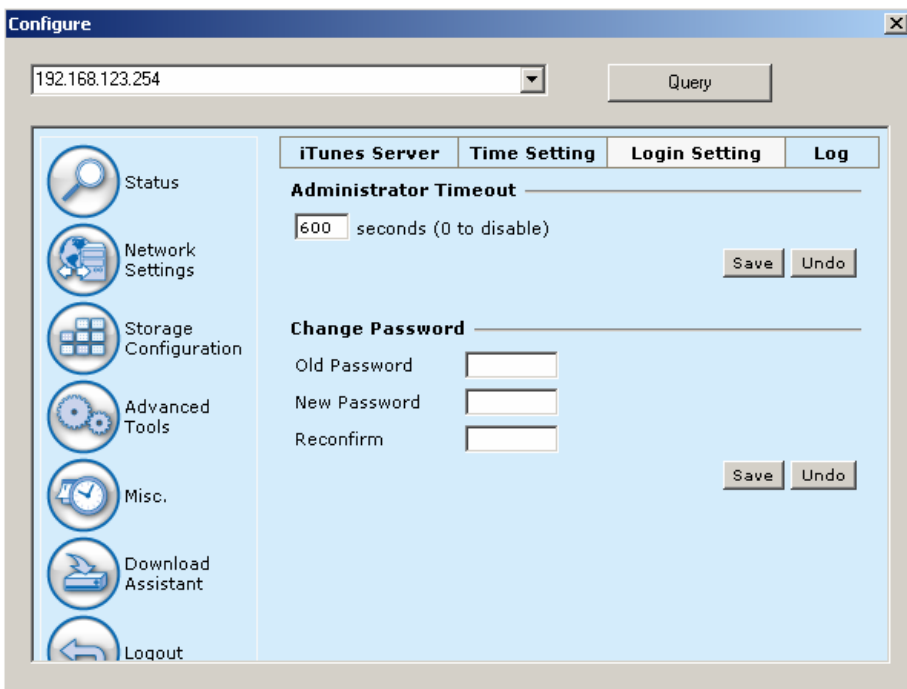
Set Date and Time manually: Manually setting up the date and time.



6.2 Login Setting

Administrator Timeout: If users login, and idles for a period of time (the default value is 600 seconds), then that user will be logged out automatically. Set this value to “0” to disable this feature.

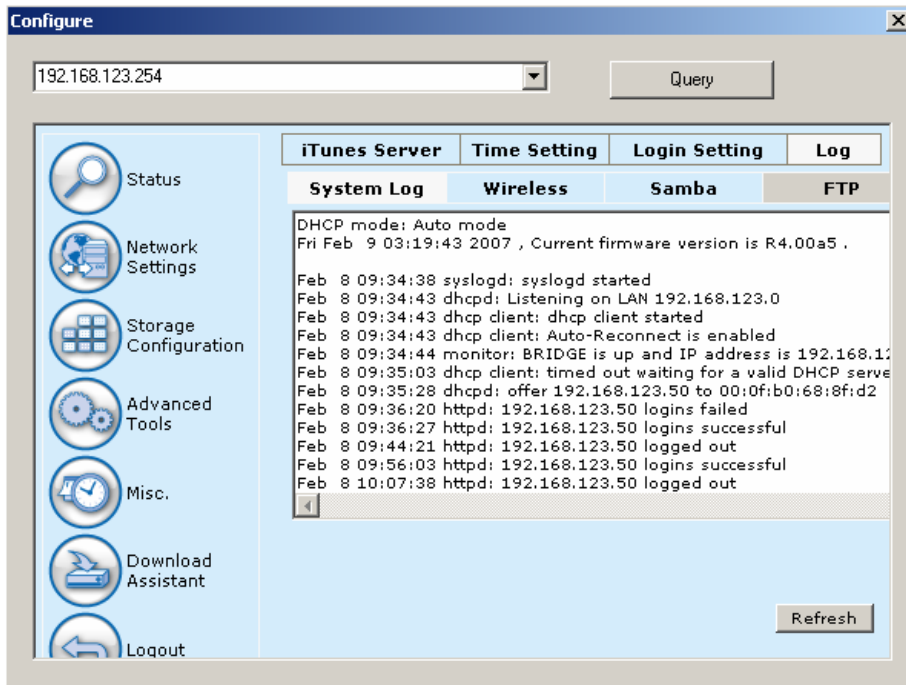
Change Password: To change the login password, you have to enter the old password and confirm the new password twice.



6.3 System Log

Logs are useful for troubleshooting, and you can review the whole system logs here. There are four categories of logs:

System Log, Wireless, Samba, and FTP.

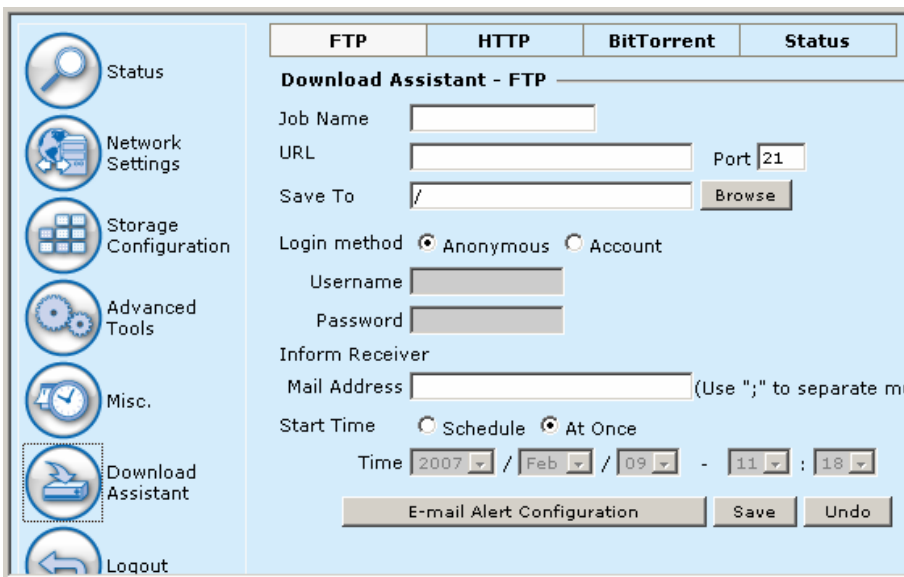


Chapter 7: Download Assistant

With Download Assistant, you can download files from remote server without using any computer. The one thing you need to do is adding a download task in the configuration page. Besides, you can also set a schedule rule to indicate which time the download task will start. As a result, the download task won't disturb your daily work, and can start automatically when you are sleeping. Additionally, the download assistant will send a mail to inform the receiver automatically when the file is downloaded completely.

7.1 FTP

This page allows you to download files from remote FTP server. Please refer to the following description.



Job Name: Name of download task.

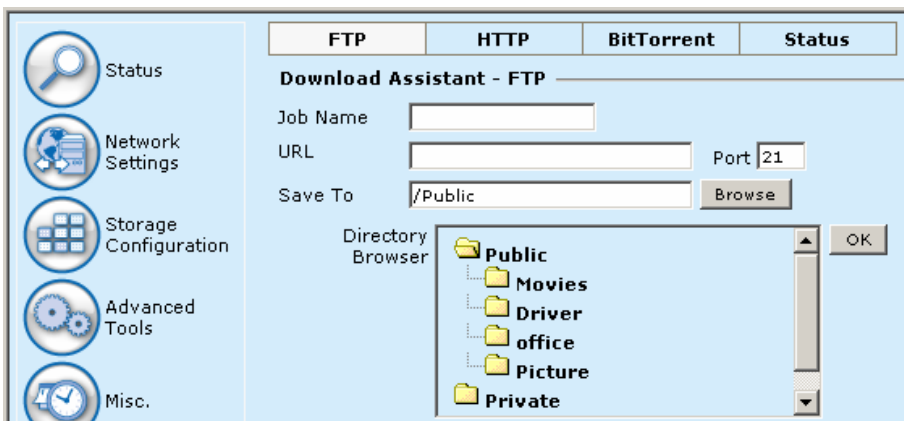
URL: IP address and file path of remote FTP server.

(e.g. ftp://ftp.yahoo.com/file1.avi)

Port: Port number that remote FTP server uses.

Save To: Indicate which folder you will save the file in the hard disk. You can type the file path manually or press

Browse button to select the destination folder. Press **OK** button when you finish the selection.



Login method: The login method is decided by remote FTP server. You can choose anonymous login or input

authorized user name and password.

Inform Receiver: This option is used for mail alert. This device will send a mail to inform the receiver when the file is downloaded completely. You can enter one or several E-mail address of receivers. Use “;” to separate different mail addresses. You need to also indicate the SMTP server by pressing “E-mail Alert Configuration” button at the first time.

Start Time: The download task can be started immediately, or assign a schedule rule. You can set the start time to midnight or other time when the network bandwidth is more available.

E-mail Alert Configuration: You need to finish the configuration of E-mail server before mail alert function can be started working.

Admin’s E-mail Address: Please enter an E-mail address that will be used as the sender of mail alert feature.

Note. Some mail servers would refuse the mail relay service if the sender isn’t on the same mail server.

SMTP Server Address: Please enter the IP address or domain name of mail server that you want to use.

Account Name: Please enter your login name of mail server if needed.

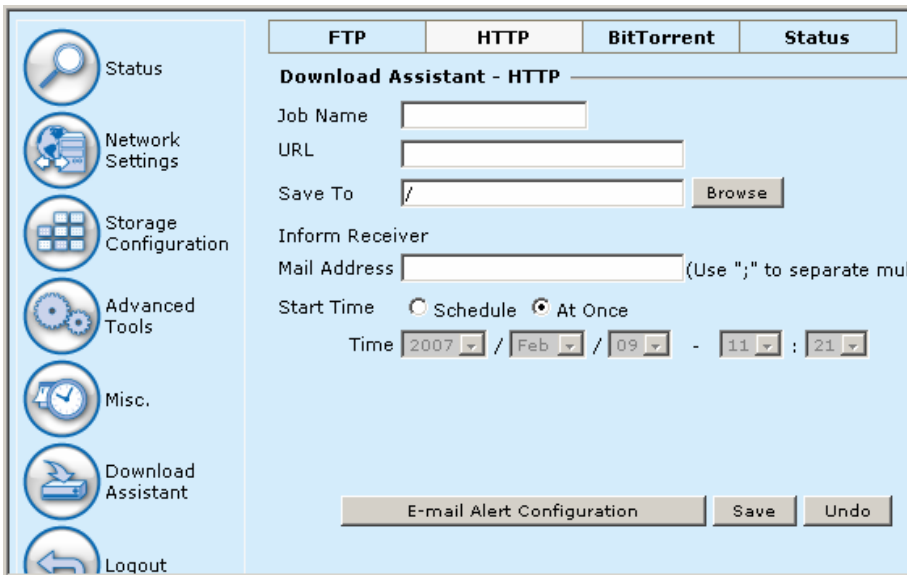
Password: Please enter your login password of mail server if needed.

FTP	HTTP	BitTorrent	Status
Download Assistant - E-mail Alert Configuration			
Admin's E-mail Address		<input type="text"/>	
SMTP Server Address		<input type="text"/>	
Account Name		<input type="text"/>	
Password		<input type="password"/>	

Back Save Undo

7.2 HTTP

This page allows you to download files from remote HTTP server. Please refer to the following description.

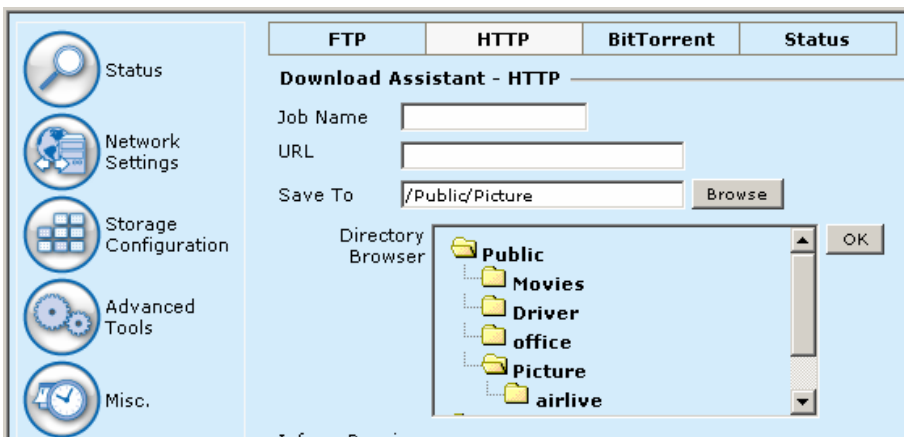


Job Name: Name of download task.

URL: IP address and file path of remote HTTP server.

(e.g. <http://software.yahoo.com/file1.avi>)

Save To: Indicate which folder you will save the file in the hard disk. You can type the file path manually or press **Browse** button to select the destination folder. Press **OK** button when you finish the selection.



Inform Receiver: This option is used for mail alert. This device will send a mail to inform the receiver when the file is downloaded completely. You can enter one or several E-mail address of receivers. Use “;” to separate different mail addresses. You need to also indicate the SMTP server by pressing “E-mail Alert Configuration” button at the first time.

Start Time: The download task can be started immediately, or assign a schedule rule. You can set the start time to midnight or other time when the network bandwidth is more available.

E-mail Alert Configuration: You need to finish the configuration of E-mail server before mail alert function can be started working.

Admin’s E-mail Address: Please enter an E-mail address that will be used as the sender of mail alert feature.

Note. Some mail servers would refuse the mail relay service if the sender isn’t on the same mail server.

SMTP Server Address: Please enter the IP address or domain name of mail server that you want to use.

Account Name: Please enter your login name of mail server if needed.

Password: Please enter your login password of mail server if needed.

The screenshot shows a web interface with a sidebar on the left containing icons for Status, Network Settings, Storage Configuration, Advanced Tools, Misc., Download Assistant, and Logout. The main content area has tabs for FTP, HTTP, BitTorrent, and Status. The BitTorrent tab is selected, and the page title is "Download Assistant - E-mail Alert Configuration". Below the title are four input fields: "Admin's E-mail Address", "SMTP Server Address", "Account Name", and "Password". At the bottom right of the main area are three buttons: "Back", "Save", and "Undo".

7.3 BitTorrent

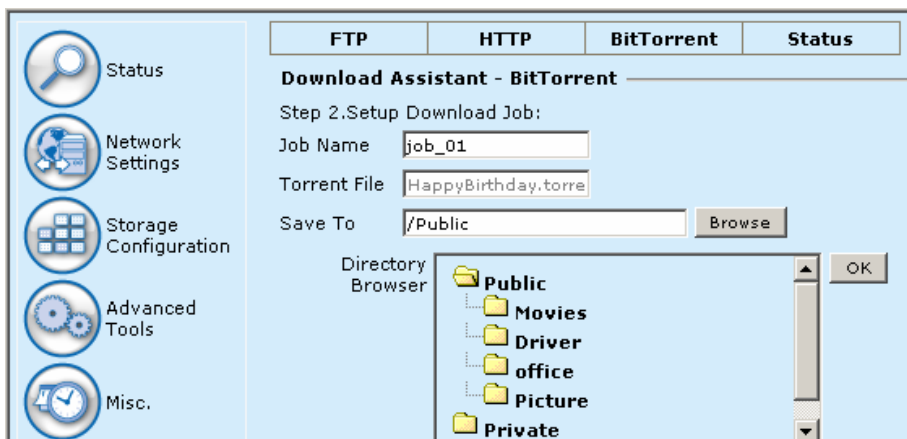
This product can also work with BitTorrent P2P service. Users just upload the Torrent file to this device, and it can start to download files without turning on PC. First, please select a torrent file to Upload.

The screenshot shows the same web interface as above, but with the BitTorrent tab selected. The page title is "Download Assistant - BitTorrent". Below the title, it says "Step 1. Upload Torrent File:". There is a text input field followed by "Browse..." and "Upload" buttons.

Then indicate the file path.

Job Name: Name of download task.

Save To: Indicate which folder you will save the file in the hard disk. You can type the file path manually or press **Browse** button to select the destination folder. Press **OK** button when you finish the selection.



Inform Receiver: This option is used for mail alert. This device will send a mail to inform the receiver when the file is downloaded completely. You can enter one or several E-mail address of receivers. Use “;” to separate different mail addresses. You need to also indicate the SMTP server by pressing “E-mail Alert Configuration” button at the first time.

Start Time: The download task can be started immediately, or assign a schedule rule. You can set the start time to midnight or other time when the network bandwidth is more available.

E-mail Alert Configuration: You need to finish the configuration of E-mail server before mail alert function can be started working.

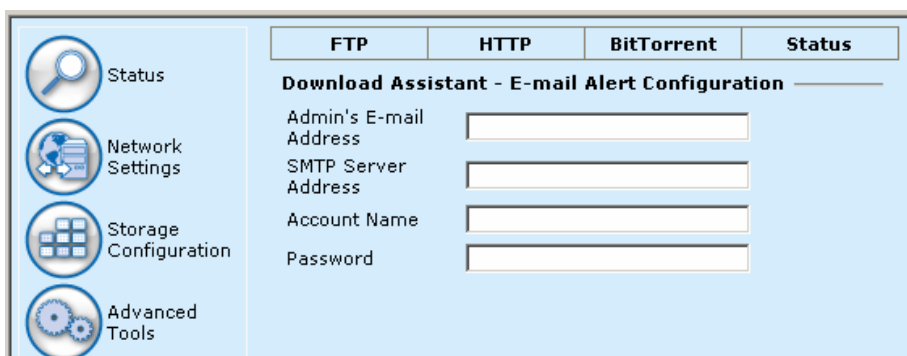
Admin’s E-mail Address: Please enter an E-mail address that will be used as the sender of mail alert feature.

Note. Some mail servers would refuse the mail relay service if the sender isn’t on the same mail server.

SMTP Server Address: Please enter the IP address or domain name of mail server that you want to use.

Account Name: Please enter your login name of mail server if needed.

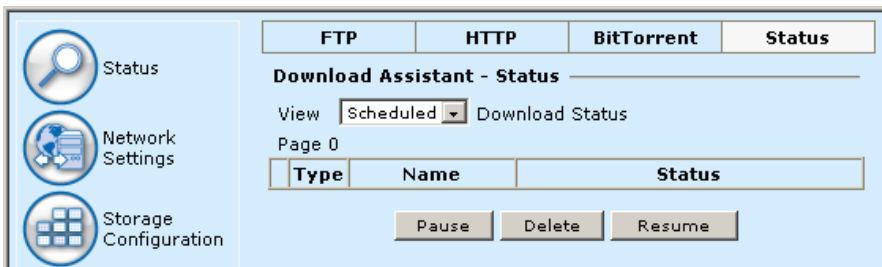
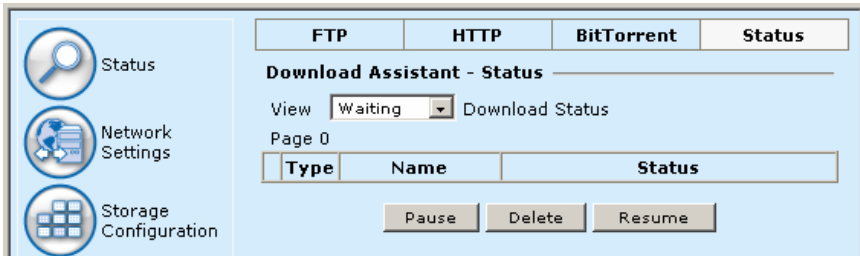
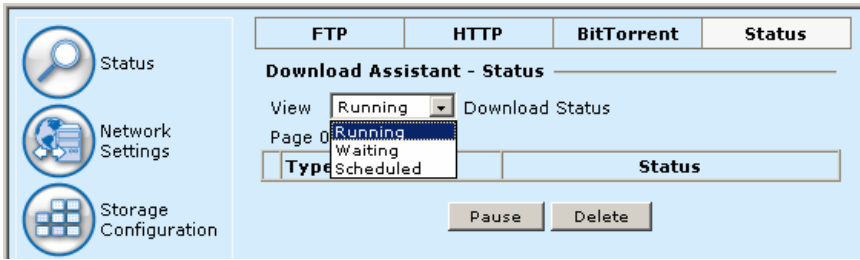
Password: Please enter your login password of mail server if needed.



7.4 Status

This page displays detailed status of configured download task in AirLive WMU-6500FS. The **Running** page contains all download tasks that are running. The **Waiting** page contains download tasks that are ready to run, but the number of current connections is over the maximum limit. So these download tasks won’t be started until another connection

is available. The **Scheduled** page contains download tasks that are scheduled to run.



Chapter 8: FAQ & Trouble Shooting

8.1 What can I do when I have some trouble?

1. How do I connect to AirLive WMU-6500FS?

A: Please prepare one RJ45 cable and connect the LAN port directly. The AirLive WMU-6500FS already supports MDI/MDIX.

2. How to “Reset settings to default”?

A: Press the buttons of “Shutdown” and “Backup” simultaneously over 6 seconds to reset the system to the factory default setting.

3. What can I do if I forget login password?

A: Please refer to question 2 above to reset setting to default. The default login password is **airlive**.

4. When I login the storage of AirLive WMU-6500FS via My Network Places, but I can not find any files or folders even if I have plugged HDD in AirLive WMU-6500FS.

A: First, check your HDD status LED. If the hard disk is correctly connected, the HDD status LED will flash. If the LED didn't flash, maybe you forget to format the new hard disk before using it, or maybe the hard disk is not connected correctly, or maybe the hard disk is corrupted.

Note. This AirLive WMU-6500FS supports FAT/FAT32/Ext2 file systems. If the file system of HDD is NTFS, the

device just can read files and can not copy any files to any NTFS folders.

5. No matter what I do, I can not configure AirLive WMU-6500FS even if I setup fixed IP and can search or Ping to AirLive-6500FS.

A: Please check the Status LED or HDD LED. If normal, they will be flash. Otherwise, reset the settings to factory default and try it again.

6. I can not save the file which size is large than 2GB.

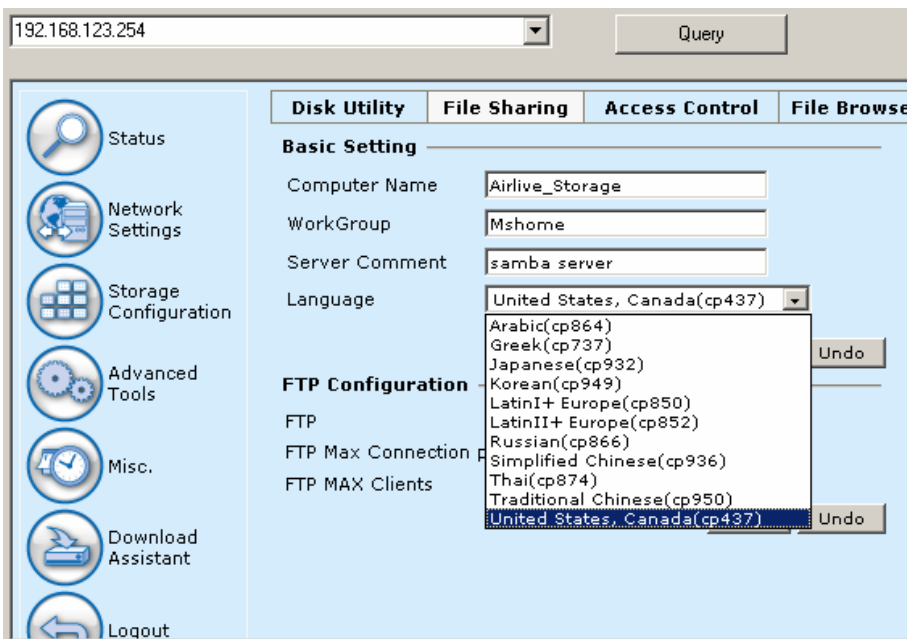
A: Please check the file system of your hard disk. This problem will occur if the file system is FAT or FAT32. Convert file system to Ext2 can solve this problem. The format utility of AirLive WMU-6500FS will format HDD to ext2.

7. I can't access the shared folder with Microsoft Windows 98/Me.

A: If you use Microsoft Windows 98/Me, and want to access the authorized folder, you **MUST** have the same account and password in the AirLive WMU-6500FS and your computer.

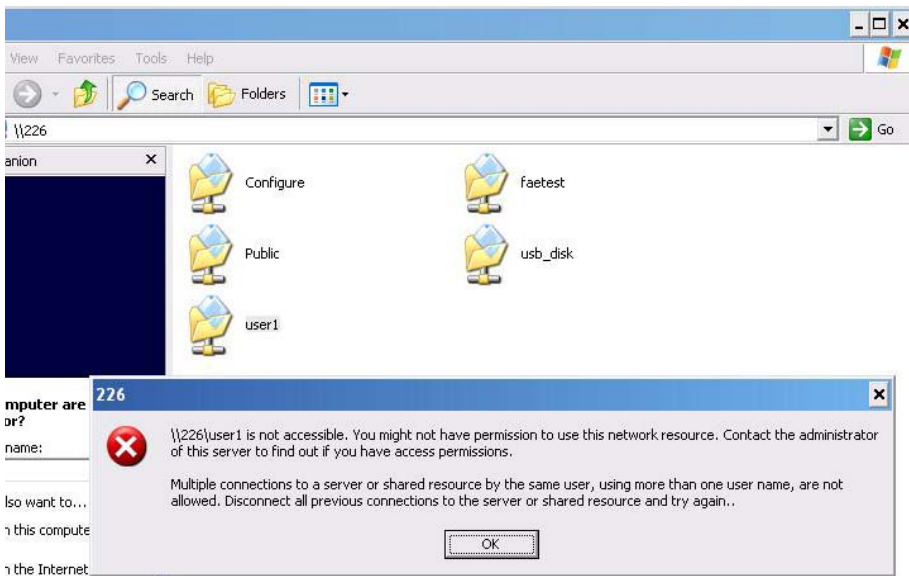
8. Why do I see the wrong folder/file name in My Network Places?

A: Please select the proper language as you need.



9. Why can't I access the file from My Network Places after enabling Authorization mode?

A: Sometimes I can't access folders via My Network Places by using correct user name and password, such as shown below:



This is because Windows system caches the previous login records, so that user can not use another account to login this device. To solve this problem, please disconnect previous network drive first.



After deleting previous record, please try to login again.

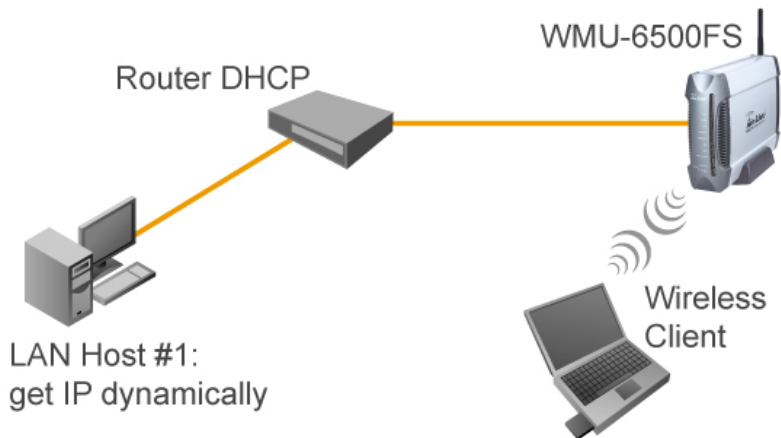
8.2 How to setup wireless function?

1. How can I use the wireless function?

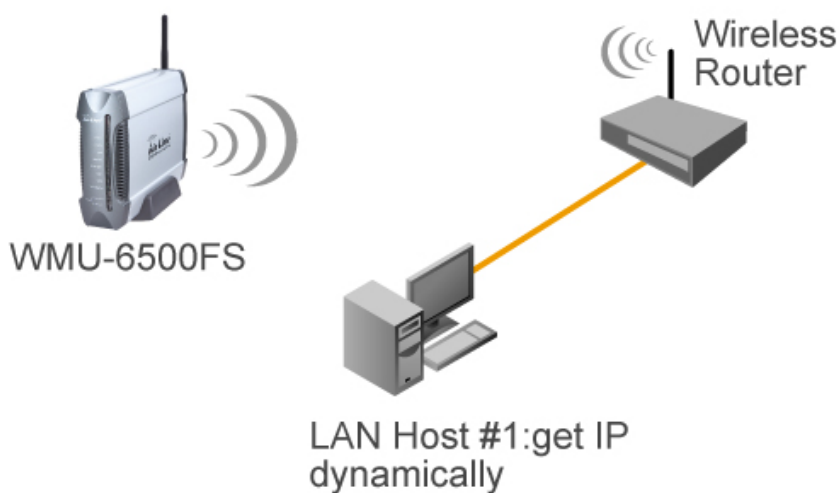
A: Generally speaking, there are four modes to setup in this device. The most common function is “AP mode”. The user can make this device as a wireless AP device as follows.

AP mode:

First, the wireless client sets up the same SSID with AirLive WMU-6500FS and get IP address from another gateway router. Then the wireless client can associate the network or roam Internet via AirLive WMU-6500FS.



Wireless Client Mode: First, you need to connect your computer to AirLive WMU-6500FS via a RJ45 cable. Then use Scan AP feature of AirLive WMU-6500FS to connect to another wireless router. After AirLive WMU-6500FS connect to wireless router, your computer can communicate with LAN Host#1 via AirLive WMU-6500FS.



WDS only mode: WDS→Wireless Distribution system. This device also supports this function. How to configure this in your environment? The below Figure1 is for your reference. First, check which channel you want to use. We choose channel 10 for the example. Scan other AP which channel is 10 and also supports WDS function. Second, add the wireless MAC address of AirLive WMU-6500FS in this Wireless Router # 2. (Figure2). And use Scan AP to find the wireless which SSID is “WR-2” and join it in the list. Finally, LAN-Host #1 can find Wireless Router #2 and LAN-Host #2.

Figure 1:

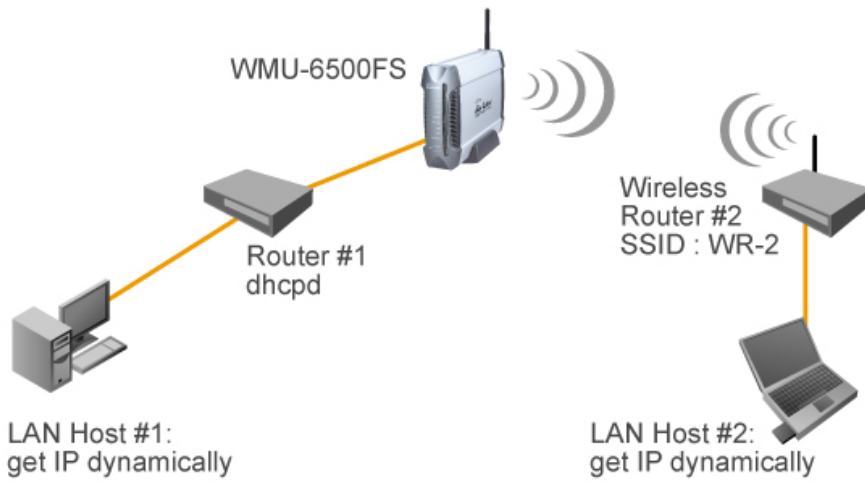
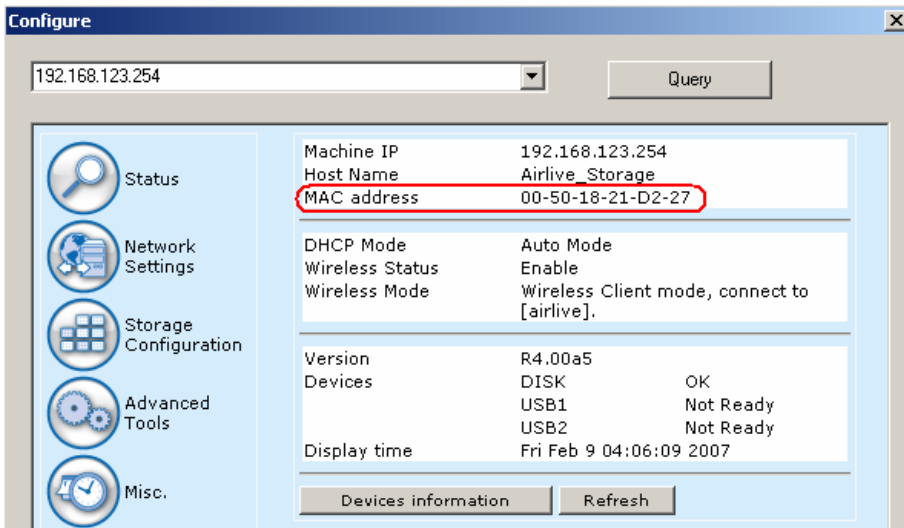
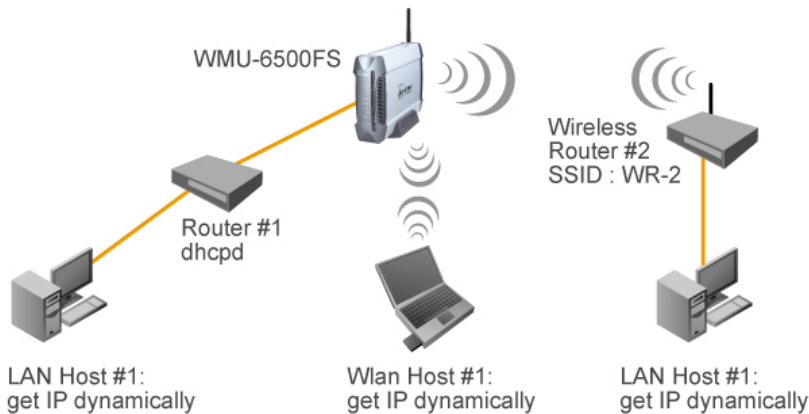


Figure 2:



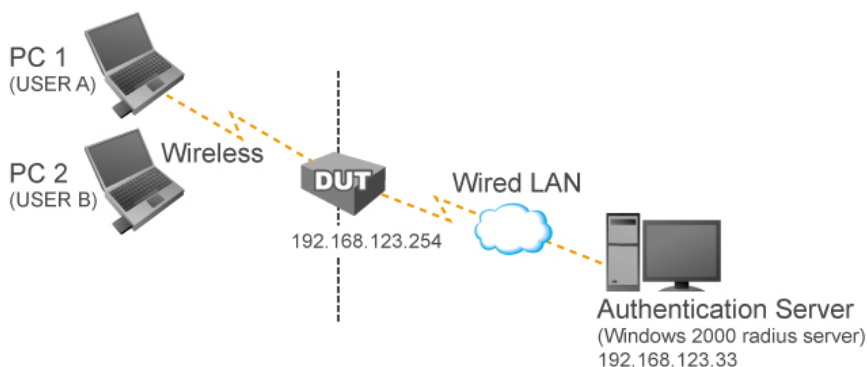
WDS Hybrid mode: This device also supports WDS and AP mode at the same time. How to configure this in your environment? The below figure is for your reference.



For the WDS setting, please refer to the above WDS only mode.

For AP setting, please refer to the AP mode.

2. How to configure 802.1x or WPA with RADIUS server?



■ Equipment Details

PC1:

Microsoft Windows XP Professional without Service Pack 1.

D-Link DWL-650+ wireless LAN adapter

Driver version: 3.0.5.0 (Driver date: 03.05.2003)

PC2:

Microsoft Windows XP Professional with Service Pack 1a.

Z-Com XI-725 wireless LAN USB adapter

Driver version: 1.7.29.0 (Driver date: 10.20.2001)

Authentication Server: Windows 2000 RADIUS server with Service Pack 3 and HotFix Q313664.

NOTE.

Windows 2000 RADIUS server only supports PEAP after upgrade to service pack 3 and HotFix Q313664 (*You can get more information from <http://support.microsoft.com/default.aspx?scid=kb;en-us;313664>*)

DUT Configuration:

1. Enable DHCP server.
2. WAN setting: static IP address.
3. LAN IP address: 192.168.123.254/24.
4. Set RADIUS server IP.
5. Set RADIUS server shared key.
6. Configure WEP key and 802.1X setting.

The following test will use the built-in 802.1X authentication method such as EAP_TLS, PEAP_CHAPv2 (Windows XP with SP1 only), and PEAP_TLS (Windows XP with SP1 only) using the Smart Card or other

Certificate of the Windows XP Professional.

■ DUT and Windows 2000 RADIUS Server Setup

1. Setup Windows 2000 RADIUS Server. We have to change authentication method to MD5_Challenge or using smart card or other certificate on RADIUS server according to the test condition.

2. Setup DUT

- ✓ Enable the 802.1X (check the "Enable checkbox").
- ✓ Enter the RADIUS server IP.
- ✓ Enter the shared key. (The key shared by the RADIUS server and DUT).
- ✓ We will change 802.1X encryption key length to fit the variable test condition.

3. Setup Network adapter on PC

- ✓ Choose the IEEE 802.1X as the authentication method. (Figure 2)

NOTE. Figure 2 is a setting picture of Windows XP without service pack 1. If users upgrade to service pack 1, then they can't see MD5-Challenge from EAP type list any more, but they will get a new Protected EAP (PEAP) option.

- ✓ Choose MD5-Challenge or Smart Card or other Certificate as the EAP type.
- ✓ If choose to use smart card or the certificate as the EAP type, we select to use certificate on this computer.
- ✓ We will change EAP type to fit the variable test condition.

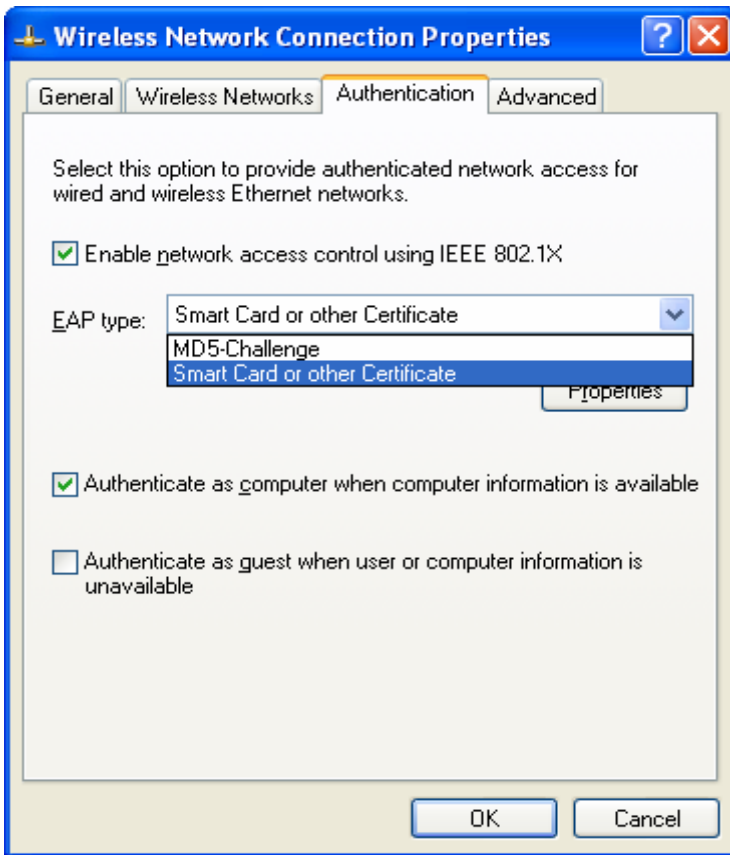


Figure 2: Enable IEEE 802.1X access control

- Windows 2000 RADIUS server Authentication testing:
 1. DUT authenticate PC1 using certificate. (PC2 follows the same test procedures.)
 2. Download and install the certificate on PC1. (Figure 3)
 3. PC1 choose the SSID of DUT as the Access Point.
 4. Set authentication type of wireless client and RADIUS server both to EAP_TLS.
 5. Disable the wireless connection and enable again.
 6. The DUT will send the user's certificate to the RADIUS server, and then send the message of authentication result to PC1. (Figure 4)
 7. Windows XP will prompt that the authentication process is success or fail and end the authentication procedure. (Figure 5)
 8. Terminate the test steps when PC1 get dynamic IP and PING remote host successfully.

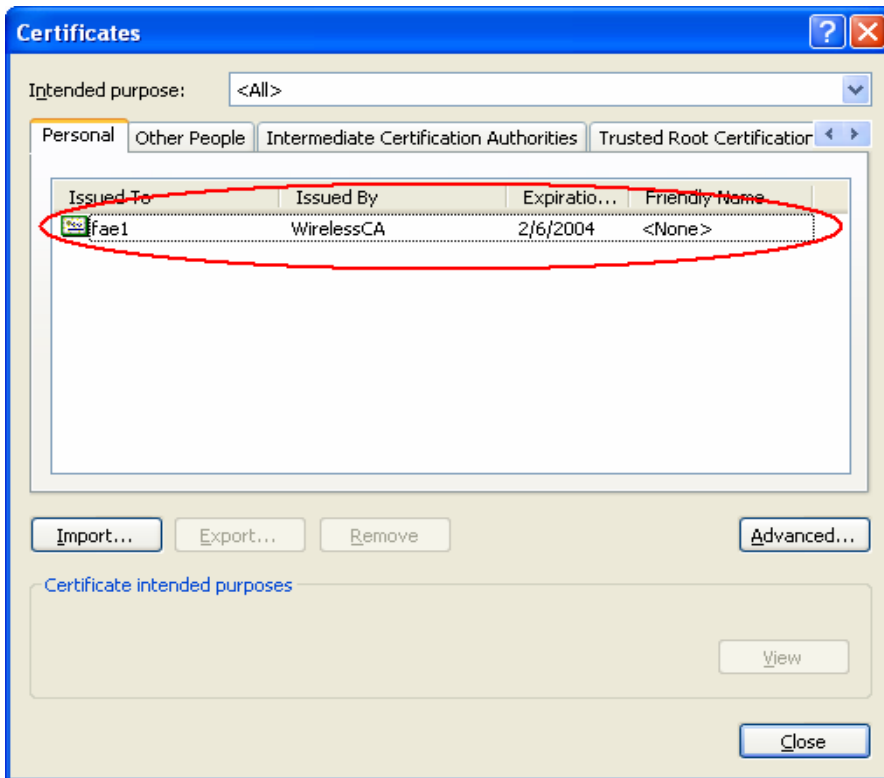


Figure 3: Certificate information on PC1

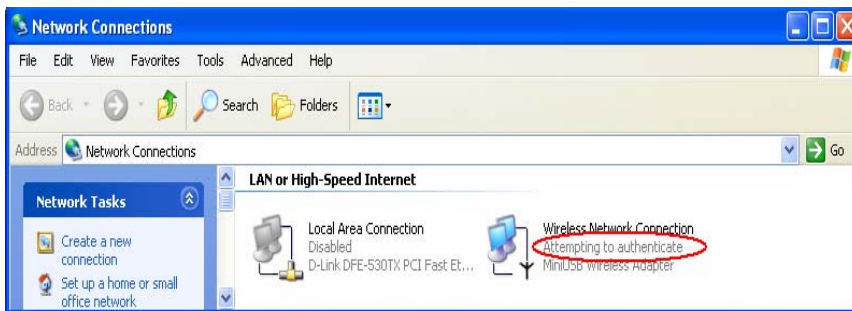


Figure 4: Authenticating



Figure 5: Authentication success

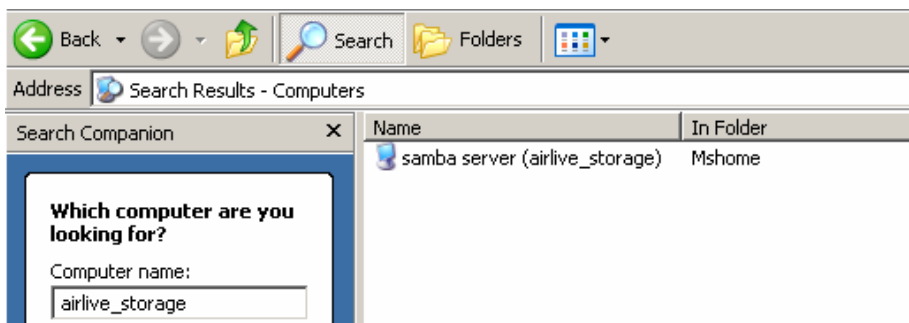
- DUT authenticate PC2 using PEAP-TLS.
 1. PC2 choose the SSID of DUT as the Access Point.
 2. Set authentication type of wireless client and RADIUS server both to PEAP_TLS.

3. Disable the wireless connection and enable again.
4. The DUT will send the user's certificate to the RADIUS server, and then send the message of authentication result to PC2.
5. Windows XP will prompt that the authentication process is success or fail and end the authentication procedure.
6. Terminate the test steps when PC2 get dynamic IP and PING remote host successfully.

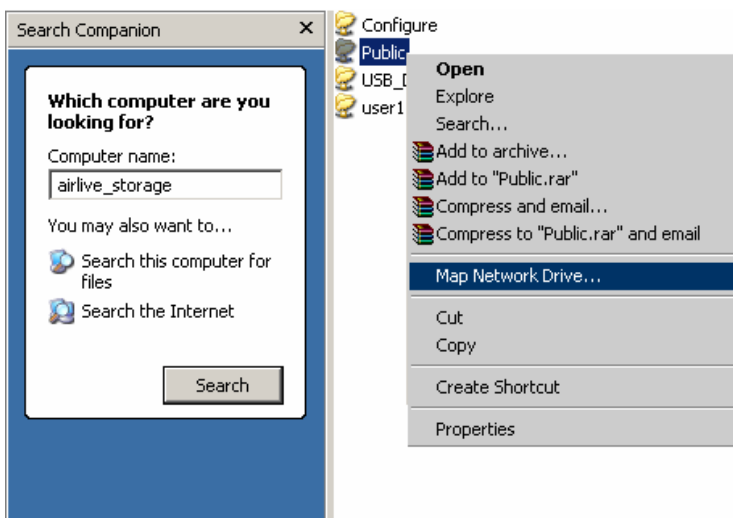
8.3 How to map network drive in Windows?

Mapping a network drive to a virtual drive in your computer can help you access that drive easily. After finishing mapping, the virtual drive will appear when you launch **My Computer** in Windows.

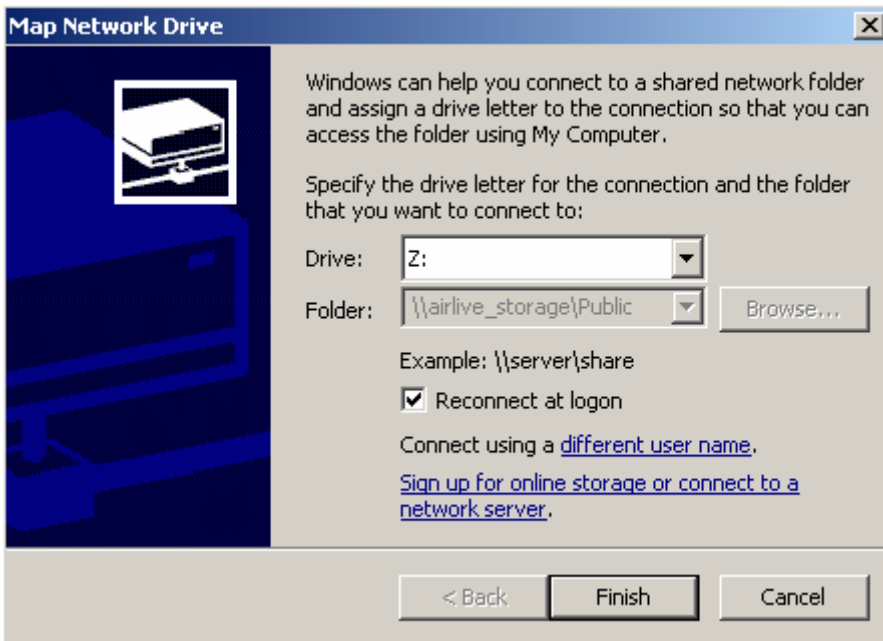
Step 1: Search AirLive WMU-6500FS in Windows My Network Places. The default host name of AirLive WMU-6500FS is **Net_Storage**.



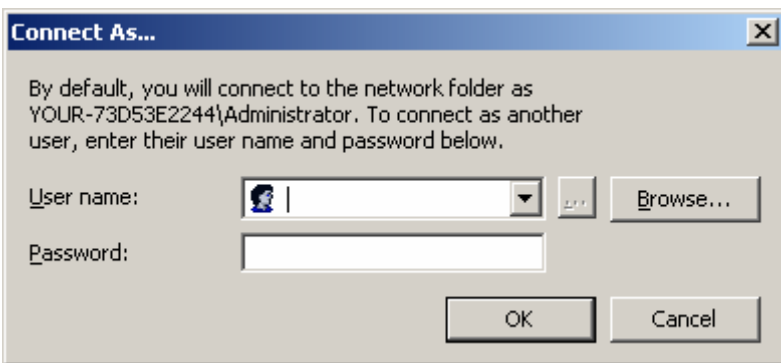
Step 2: After find the AirLive WMU-6500FS, double click on the icon. Right click on the folder which you want to map, and choose **Map Network Drive**.



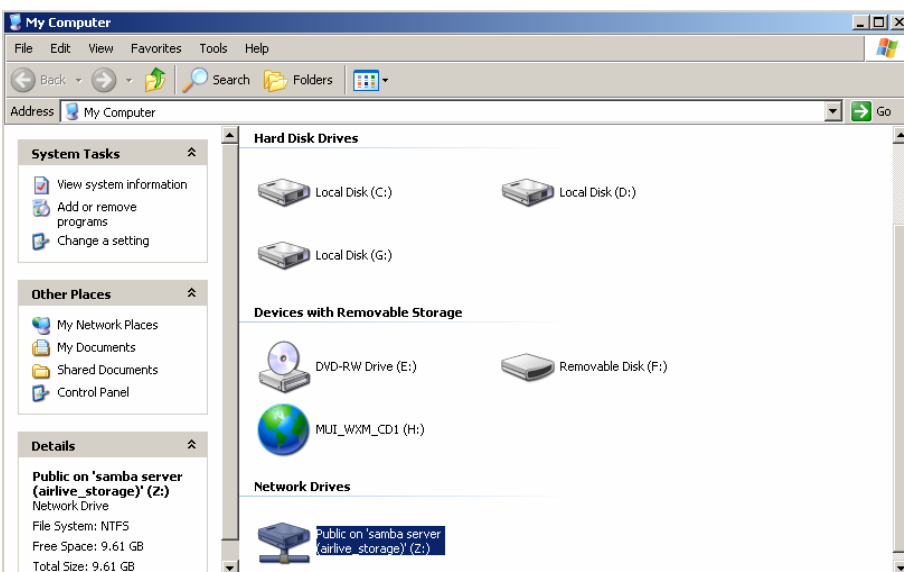
Step 3: Select the prompt of this drive that you like. Then press **Finish** button to close the dialogue window.

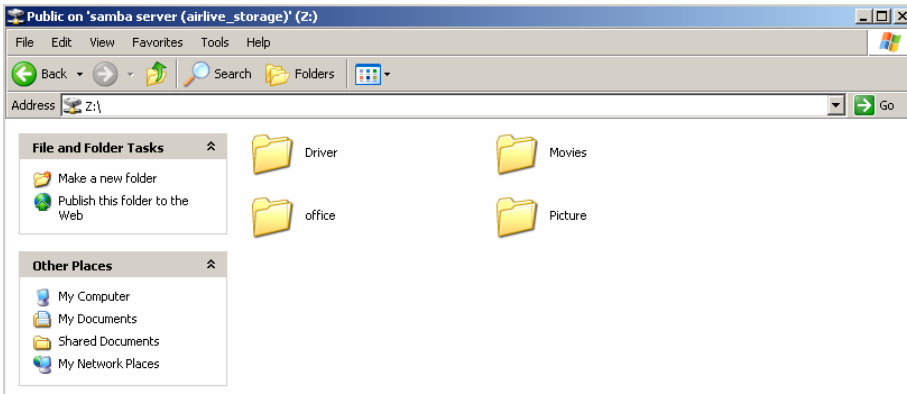


If the folder can only be accessed by authorized user, then you need to click “**Connect using a different user name**”, and input authorized user name and password.



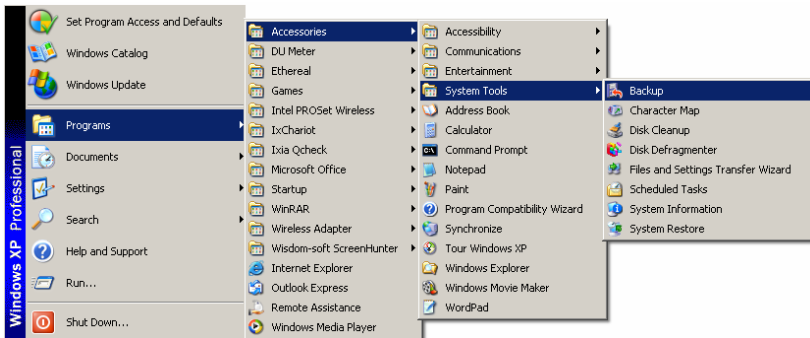
Step 4: After finish drive mapping, you can find an additional **Z** drive in **My Computer** group. Then you can access network drive via **Z** drive, and don't need to search network drive every time.



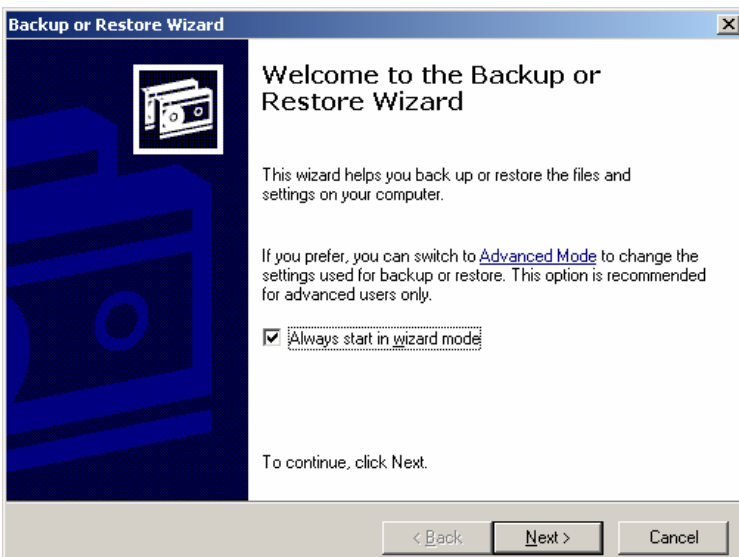


8.4 How to backup data by using Microsoft backup utility?

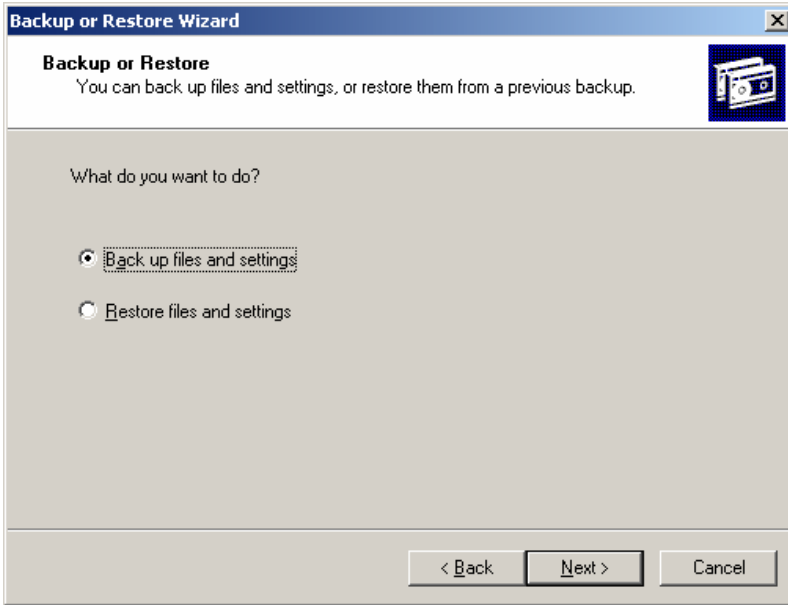
The backup utility is installed and ready for use if you use Windows XP Professional edition. Otherwise, if you use Windows XP Home edition, please install **Ntbackup.msi** from Windows installation CD first.



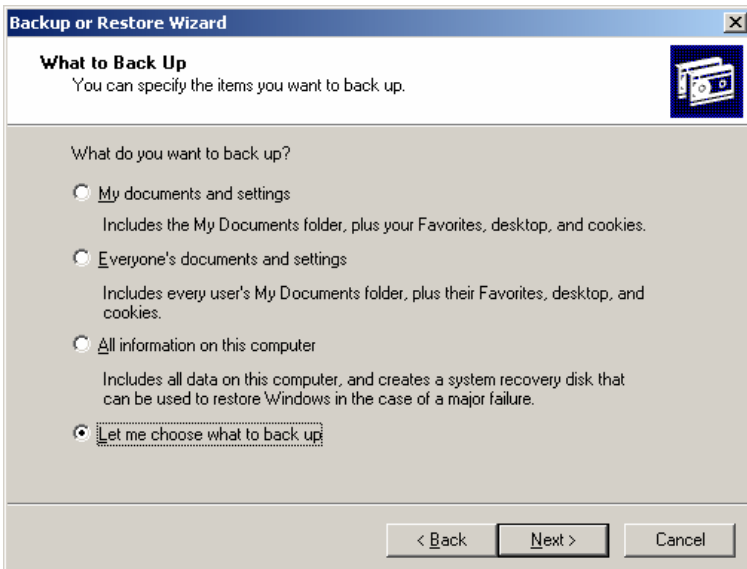
Step 1: Please refer to 8.3 to map a network drive of AirLive WMU-6500FS first. Then start Windows backup utility, and press next button to continue.



Step 2: Here we choose “**Back up files and settings**”.



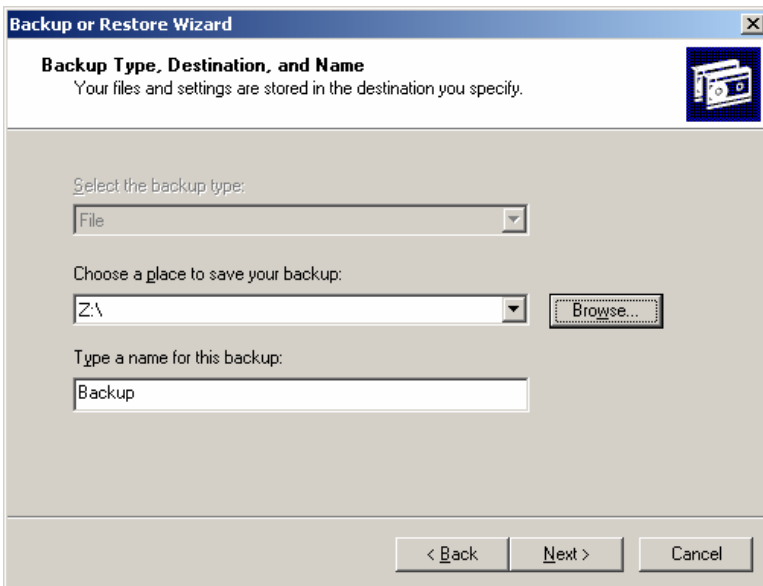
Step 3: Choose “**Let me choose what to back up**”.



Step 4: Choose which folder will be backup to AirLive WMU-6500FS.



Step 5: Choose the destination that you will save files. Here we choose drive Z, which is a network drive of AirLive WMU-6500FS.



Step 6: Finally, press **Finish** button to start backup right now. Otherwise, press **Advanced** button to set a schedule rule for this backup task.

